

ESSENTIALS

COLLECTION

A masterpiece in minimalism, the Essentials collection fuses the clean lines of Nordic design traditions with pared-back Japanese-inspired aesthetics to create a series of beautiful and versatile rugs. With the collection, the designers have explored the possibilities of combining and contrasting textures, structures and nuances to give the rugs unique depth and character, while still retaining a sense of visual simplicity.

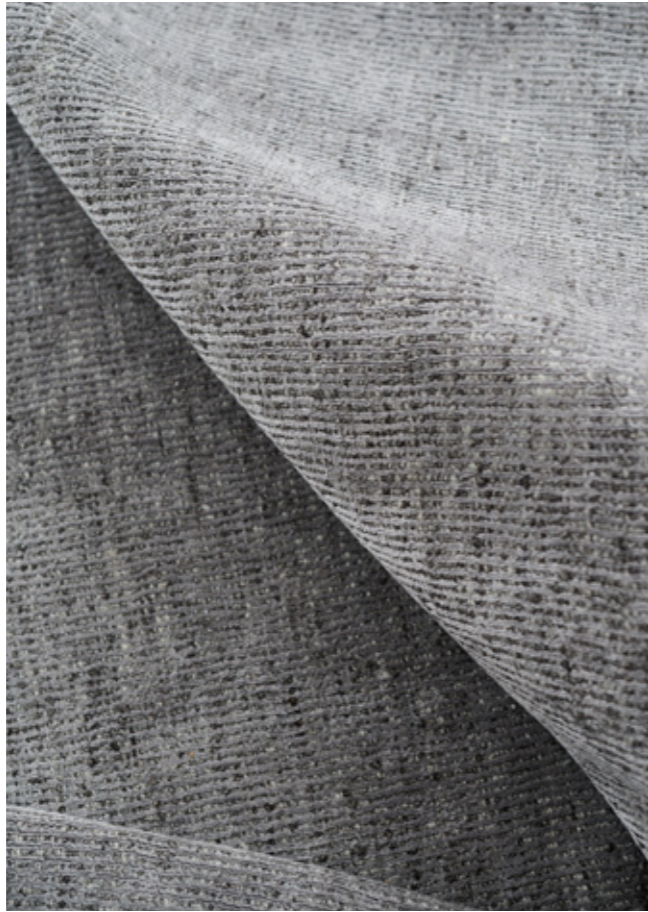


INDEX

DESIGN	IMAGE	INFO
AGNER	P 72	P 115
ALVA	P 8	P 83
ASKO	P 74	P 88
ASLAK	P 59	P 123
BIRLA	P 48	P 96
COMBINATION	P 43	P 82
COVER	P 30	P 80
DEVISE	P 18	P 97
EIK	P 47	P 112
ELLIOT	P 6	P 109
EMBLA	P 12	P 86
EVEN	P 60	P 87
FREI	P 36	P 102
FRODE	P 56	P 111
GORM	P 64	P 116
HALTI	P 16	P 99
INGUN	P 68	P 114
IVAR	P 38	P 104
JUSTIN	P 44	P 110
LEDRO	P 52	P 98
LIFA	P 40	P 107
LOGMAR	P 15	P 95
LUCENS	P 24	P 78
LULE	P 4	P 100
MARGUN	P 34	P 108
METALLUM	P 33	P 94
NARVIK	P 66	P 105
NESSA	P 20	P 121
OKSA	P 22	P 85
RAINBOW	P 28	P 92
RANA	P 62	P 122
REGATTA	P 55	P 90
SENJA	P 10	P 84
SIGYN	P 32	P 124
SKULD	P 51	P 113
SNEFRID	P 45	P 106
TORUN	P 23	P 119
TURID	P 14	P 117
UNE	P 26	P 103
VALDI	P 71	P 120
VANTAA	P 37	P 118
VESLE	P 50	P 101























DESIGN

Colours, patterns, structures, contrasts; every speck, stroke and shade is carefully contemplated by our renowned Danish designers before being considered for production. Nordic values of timeless elegance and simplicity are expressed through beautiful and inspirational designs to bring personality, harmony and aesthetic pleasure into a room.

















CRAFTSMANSHIP

Even the most sophisticated machines cannot replace the skilled hands of our dedicated and talented weavers. They use ancient artisan techniques passed down from generation to generation to create our beautiful rugs; intricate and time-consuming hand-knotted, -loomed and -woven rugs with rich contrasts and structures, involving hours of complex manual methods to combine tradition with contemporary aesthetics to produce timeless works of art.













QUALITY

It takes expertise, exacting standards and perseverance to create handmade, high-quality rugs.

Our uncompromising approach to quality can be seen in all aspects of our company - from the design and production to our delivery and customer service.

Old-fashioned virtues like decency, respect and honesty form the cornerstones of our company and ensure we deliver results that reflect our values.





RESPONSIBILITY

We care about the environment and the people who live in it. That's why we adhere to a strict Code of Conduct that safeguards fair, ethical standards and safe working conditions for anyone involved in the production of our rugs. We also comply with all REACH standards to ensure relevant environmental laws are fulfilled, and as a company we acknowledge our responsibility in helping create a more sustainable world.









HERITAGE

Every one of our rugs has a unique story behind it. The story of the inspiration and research behind its development and design. The story of the skilled human hands that have invested hours of precise craftsmanship into the creation of the rug. The story of how the rug is finished, inspected and approved, before ending up as beautiful floor art in your home to tell your story.



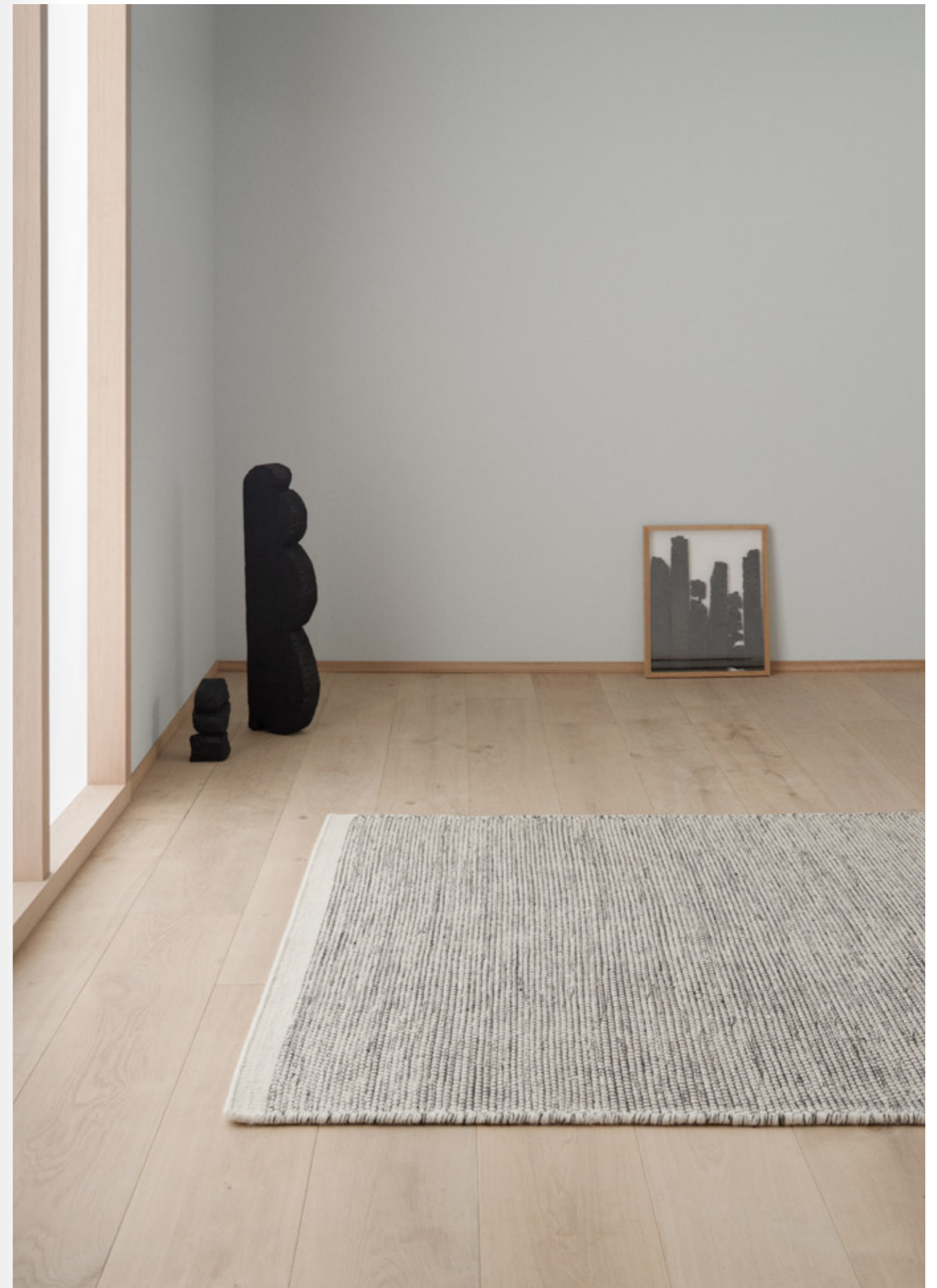
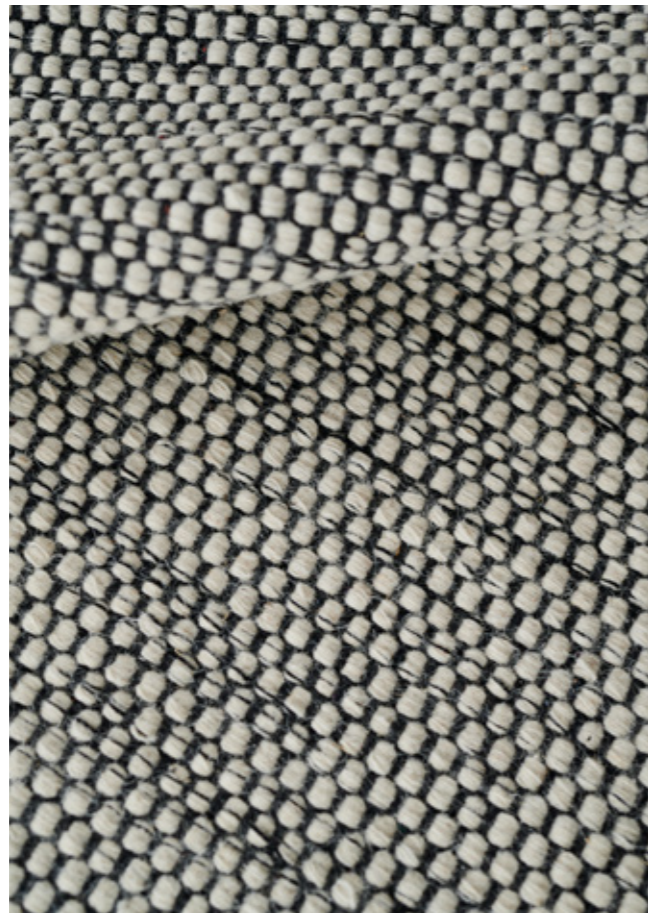


DESIGNERS

Although unique, each rug shares the same DNA, created by renowned Danish designers whose considered and timeless designs make up the collection. Head of design Urd Moll Gundermann has designed the majority of the rugs; a perfectionist in her exploration of the interplay between fashion, form and colours, she is relentless in her hunt to find inspiration from unexpected elements and seek balance in creating bold yet subtle designs. Designer Hanne Kortegaard describes her style as minimalist and Nordic, with her sense of refinement and subtle masculine influences reflected in the gradient-colour rug she designed for the collection.







OVERVIEW

ESSENTIALS

Primarily focusing on neutral tones in line with the uncluttered essence of the collection, the natural palette encapsulates the full spectrum – from soft, subtle shades and rich, earthy hues, to clean, cool colours and deep, dark tones – all developed by our expert designers and handmade by skilled artisans. The subtle sophistication and clarity of design language will give you a flexible and timeless rug that offers infinite design opportunities and will complement its surroundings for many years to come.



Lucens



Model LUCENS
Quality HANDLOOM
Surface composition VISCOSE
Fringes NO
Sizes (cm) 140/200, 170/240, 200/300, 250/350
Ø200
Close-up photo YES



SILVER



GREY



STEEL



NAVY



CACTUS



ROSE



Model LUCENS
Quality HANDLOOM
Surface composition VISCOSE
Fringes NO
Sizes (cm) 140/200, 170/240, 200/300, 250/350
Ø200
Close-up photo YES



AMBER



MUSTARD



NATURAL

Cover



<i>Model</i>	COVER
<i>Quality</i>	HANDLOOM
<i>Surface composition</i>	VISCOSE
<i>Fringes</i>	NO
<i>Sizes (cm)</i>	140/200, 170/240, 200/300
<i>Close-up photo</i>	YES



WHITE



GREY



ROSE



STONE



CACTUS



DARK BLUE



<i>Model</i>	COVER
<i>Quality</i>	HANDLOOM
<i>Surface composition</i>	VISCOSE
<i>Fringes</i>	NO
<i>Sizes (cm)</i>	140/200, 170/240, 200/300
<i>Close-up photo</i>	YES



OCHRE

Combination



<i>Model</i>	COMBINATION
<i>Quality</i>	HANDLOOM
<i>Surface composition</i>	VISCOSE
<i>Fringes</i>	NO
<i>Sizes (cm)</i>	140/200, 170/240, 200/300
<i>Close-up photo</i>	NO



DARK BLUE



JADE



PEACH



YELLOW

Alva



<i>Model</i>	ALVA
<i>Quality</i>	LOOM-KNOTTED
<i>Surface composition</i>	WOOL/VISCOSE
<i>Fringes</i>	NO
<i>Sizes (cm)</i>	140/200, 170/240, 200/300
<i>Close-up photo</i>	YES



SILVER



SAND

Senja



<i>Model</i>	SENJA
<i>Quality</i>	HANDLOOM
<i>Surface composition</i>	VISCOSE
<i>Fringes</i>	NO
<i>Sizes (cm)</i>	140/200, 170/240, 200/300
<i>Close-up photo</i>	YES



MUSTARD



POWDER

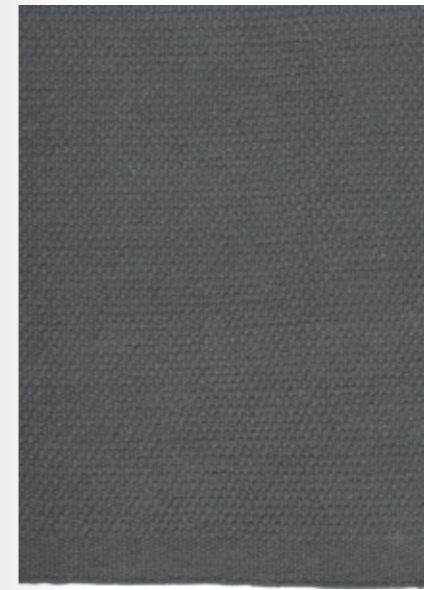


STEEL

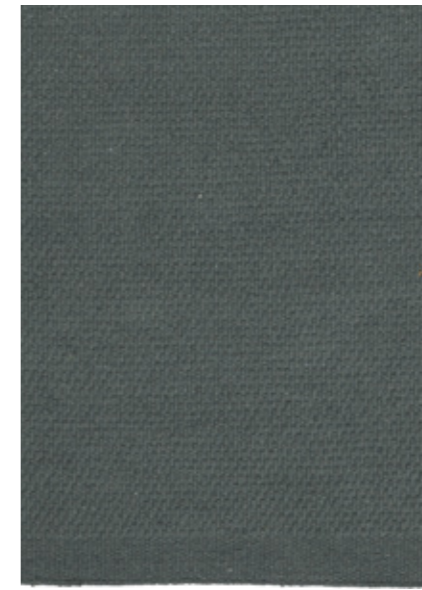
Okša



<i>Model</i>	OKSA
<i>Quality</i>	HAND-WOVEN
<i>Surface composition</i>	WOOL/COTTON
<i>Fringes</i>	NO
<i>Sizes (cm)</i>	80/250, 140/200, 170/240, 200/300, 250/350 Ø170, Ø250
<i>Close-up photo</i>	YES



OCEAN



CACTUS



MOSS



SILVER



MUSTARD



POWDER

Embla



<i>Model</i>	EMBLA
<i>Quality</i>	LOOM-KNOTTED
<i>Surface composition</i>	WOOL/VISCOSE
<i>Fringes</i>	NO
<i>Sizes (cm)</i>	140/200, 170/240, 200/300
<i>Close-up photo</i>	NO



EARTH



STEEL

Even



<i>Model</i>	EVEN
<i>Quality</i>	HAND-WOVEN
<i>Surface composition</i>	WOOL
<i>Fringes</i>	YES
<i>Sizes (cm)</i>	140/200, 170/240, 200/300
<i>Close-up photo</i>	YES



GREY



MOSS



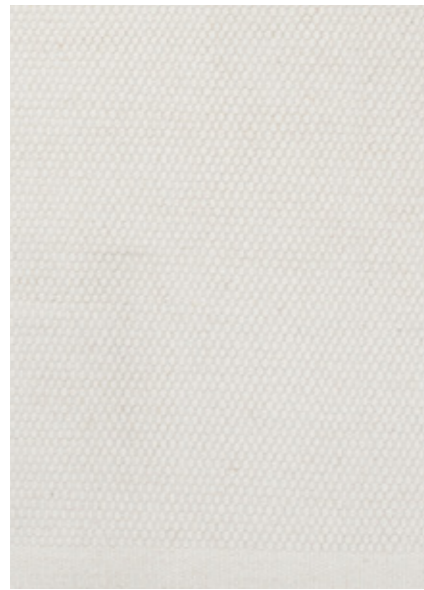
NAVY



SAND



Model ASKO
Quality HAND-WOVEN
Surface composition WOOL/COTTON
Fringes NO
Sizes (cm) 70/140, 80/250, 140/200, 170/240
 200/300, 250/350
Close-up photo YES



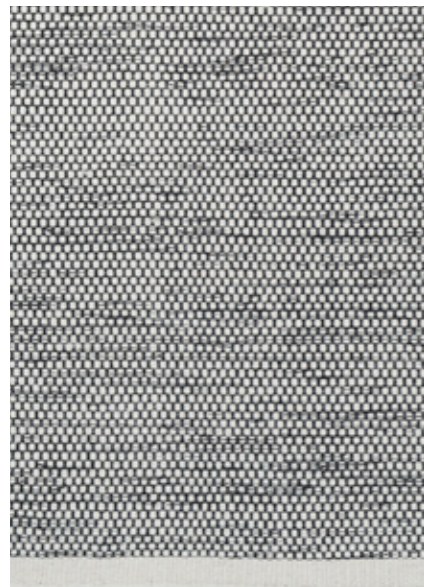
WHITE



OFF-WHITE



LIGHT GREY



MIXED



TERRAZZO



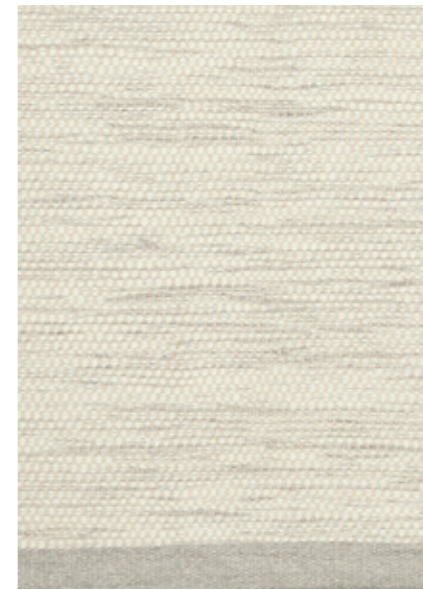
BLACK



Model ASKO
Quality HAND-WOVEN
Surface composition WOOL/COTTON
Fringes NO
Sizes (cm) 70/140, 80/250, 140/200, 170/240
 200/300, 250/350
Close-up photo YES



TAUPE



IRON



STEEL

Regatta



<i>Model</i>	REGATTA
<i>Quality</i>	HAND-WOVEN
<i>Surface composition</i>	WOOL
<i>Fringes</i>	NO
<i>Sizes (cm)</i>	140/200, 170/240, 200/300, 250/350
<i>Close-up photo</i>	YES



BEIGE



OCHRE



RUST



METAL



JADE



BLACK



<i>Model</i>	REGATTA
<i>Quality</i>	HAND-WOVEN
<i>Surface composition</i>	WOOL
<i>Fringes</i>	NO
<i>Sizes (cm)</i>	140/200, 170/240, 200/300, 250/350
<i>Close-up photo</i>	YES



WHITE

Rainbow



<i>Model</i>	RAINBOW
<i>Quality</i>	HAND-WOVEN
<i>Surface composition</i>	WOOL
<i>Fringes</i>	YES
<i>Sizes (cm)</i>	80/280*, 140/200, 170/240, 200/300, 250/350*, 300/400*
<i>Close-up photo</i>	YES

*THIS SIZE IS ONLY AVAILABLE IN WHITE



PISTACHIO



SAND



WHITE



MOSS



AMBER



OCEAN



<i>Model</i>	RAINBOW
<i>Quality</i>	HAND-WOVEN
<i>Surface composition</i>	WOOL
<i>Fringes</i>	YES
<i>Sizes (cm)</i>	80/280*, 140/200, 170/240, 200/300, 250/350*, 300/400*
<i>Close-up photo</i>	YES

*THIS SIZE IS ONLY AVAILABLE IN WHITE



OCHRE

Metallum



<i>Model</i>	METALLUM
<i>Quality</i>	HAND-WOVEN
<i>Surface composition</i>	WOOL/POLYESTER
<i>Fringes</i>	YES
<i>Sizes (cm)</i>	80/250, 140/200, 170/240, 200/300
<i>Close-up photo</i>	NO



POWDER



MUSTARD



GREEN

Logmar



<i>Model</i>	LOGMAR
<i>Quality</i>	HAND-WOVEN
<i>Surface composition</i>	WOOL
<i>Fringes</i>	NO
<i>Sizes (cm)</i>	140/200, 170/240, 200/300
<i>Close-up photo</i>	YES



GREEN



STONE



IVORY

Birla



<i>Model</i>	BIRLA
<i>Quality</i>	HAND-WOVEN
<i>Surface composition</i>	WOOL/VISCOSE
<i>Fringes</i>	YES
<i>Sizes (cm)</i>	140/200, 170/240, 200/300
<i>Close-up photo</i>	YES



YELLOW



GREEN



BLUE



WHITE



GREY

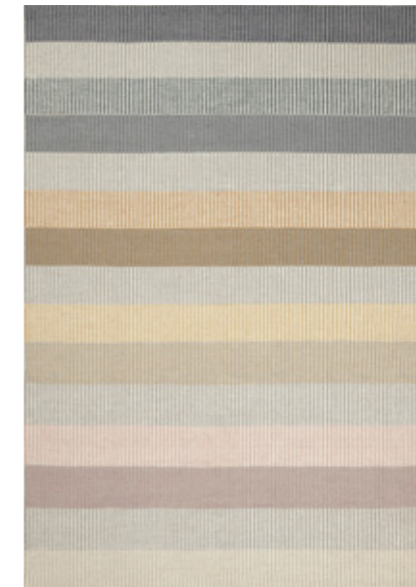
Devise



<i>Model</i>	DEVISE
<i>Quality</i>	HAND-WOVEN
<i>Surface composition</i>	WOOL
<i>Fringes</i>	NO
<i>Sizes (cm)</i>	80/280, 140/200, 170/240, 200/300
<i>Close-up photo</i>	NO



PASTEL



MUSTARD



BLUE

Ledro



<i>Model</i>	LEDRO
<i>Quality</i>	HAND-WOVEN
<i>Surface composition</i>	WOOL/POLYESTER
<i>Fringes</i>	NO
<i>Sizes (cm)</i>	140/200, 170/240, 200/300
<i>Close-up photo</i>	YES



TURQUOISE



RUST



MUSTARD



STONE

Halti



<i>Model</i>	HALTI
<i>Quality</i>	HAND-WOVEN
<i>Surface composition</i>	WOOL
<i>Fringes</i>	NO
<i>Sizes (cm)</i>	140/200, 170/240, 200/300
<i>Close-up photo</i>	YES



WHITE



GREY



BLUE

Lule



<i>Model</i>	LULE
<i>Quality</i>	HAND-WOVEN
<i>Surface composition</i>	WOOL/COTTON
<i>Fringes</i>	NO
<i>Sizes (cm)</i>	80/250, 140/200, 170/240, 200/300 250/350
<i>Close-up photo</i>	NO



GREEN



OCHRE



RUST



STEEL



BLACK

Vesle



<i>Model</i>	VESLE
<i>Quality</i>	HAND-WOVEN
<i>Surface composition</i>	WOOL/POLYESTER
<i>Fringes</i>	YES
<i>Sizes (cm)</i>	140/200, 170/240, 200/300
<i>Close-up photo</i>	YES



BEIGE



GREY



PETROL

Frei



<i>Model</i>	FREI
<i>Quality</i>	HAND-WOVEN
<i>Surface composition</i>	WOOL/POLYESTER
<i>Fringes</i>	YES
<i>Sizes (cm)</i>	140/200, 170/240, 200/300
<i>Close-up photo</i>	NO



BEIGE



OCHRE



ROSE



GREY



BLUE

Une



<i>Model</i>	UNE
<i>Quality</i>	LOOM-KNOTTED
<i>Surface composition</i>	WOOL
<i>Fringes</i>	YES
<i>Sizes (cm)</i>	140/200, 170/240, 200/300
<i>Close-up photo</i>	YES



SAND



OCHRE



ROSE



GREY



GREEN



NAVY

Ivar



<i>Model</i>	IVAR
<i>Quality</i>	HAND-WOVEN
<i>Surface composition</i>	WOOL/POLYESTER
<i>Fringes</i>	YES
<i>Sizes (cm)</i>	140/200, 170/240, 200/300
<i>Close-up photo</i>	YES



WHITE



GREY



CHARCOAL



GREEN

Narvik



<i>Model</i>	NARVIK
<i>Quality</i>	HAND-WOVEN
<i>Surface composition</i>	WOOL/VISCOSE
<i>Fringes</i>	YES
<i>Sizes (cm)</i>	140/200, 170/240, 200/300
<i>Close-up photo</i>	YES



KHAKI



CHARCOAL



BEIGE

Snefrid



<i>Model</i>	SNEFRID
<i>Quality</i>	HAND-WOVEN
<i>Surface composition</i>	VISCOSE/WOOL
<i>Fringes</i>	NO
<i>Sizes (cm)</i>	140/200, 170/240, 200/300
<i>Close-up photo</i>	NO



MUSTARD



CACTUS

Lifa



<i>Model</i>	LIFA
<i>Quality</i>	HAND-WOVEN
<i>Surface composition</i>	WOOL/POLYESTER
<i>Fringes</i>	NO
<i>Sizes (cm)</i>	140/200, 170/240, 200/300
<i>Close-up photo</i>	YES



MIXED



GRANITE

Margun



<i>Model</i>	MARGUN
<i>Quality</i>	HAND-WOVEN
<i>Surface composition</i>	WOOL
<i>Fringes</i>	NO
<i>Sizes (cm)</i>	140/200, 170/240, 200/300
<i>Close-up photo</i>	YES



MUSTARD



ROSE



STEEL



CACTUS

Elliot



<i>Model</i>	ELLIOT
<i>Quality</i>	HAND-WOVEN
<i>Surface composition</i>	WOOL
<i>Fringes</i>	NO
<i>Sizes (cm)</i>	140/200, 170/240, 200/300
<i>Close-up photo</i>	YES



WHITE/BLACK



SLATE



STONE

Justin



<i>Model</i>	JUSTIN
<i>Quality</i>	HAND-WOVEN
<i>Surface composition</i>	WOOL/COTTON/VISCOSE
<i>Fringes</i>	NO
<i>Sizes (cm)</i>	140/200, 170/240, 200/300
<i>Close-up photo</i>	YES



GREY



IVORY

Frode



<i>Model</i>	FRODE
<i>Quality</i>	HAND-WOVEN
<i>Surface composition</i>	WOOL
<i>Fringes</i>	NO
<i>Sizes (cm)</i>	140/200, 170/240, 200/300, 250/350
<i>Close-up photo</i>	YES



NATURAL



GREY



CHARCOAL

Eik



<i>Model</i>	EIK
<i>Quality</i>	HAND-WOVEN
<i>Surface composition</i>	WOOL
<i>Fringes</i>	YES
<i>Sizes (cm)</i>	140/200, 170/240, 200/300
<i>Close-up photo</i>	NO



GREY



CHARCOAL

Skuld



<i>Model</i>	SKULD
<i>Quality</i>	HAND-WOVEN
<i>Surface composition</i>	WOOL
<i>Fringes</i>	YES
<i>Sizes (cm)</i>	140/200, 170/240, 200/300
<i>Close-up photo</i>	NO



BEIGE



LIGHT GREY



CHARCOAL

Ingun



<i>Model</i>	INGUN
<i>Quality</i>	HAND-WOVEN
<i>Surface composition</i>	WOOL/POLYESTER
<i>Fringes</i>	YES
<i>Sizes (cm)</i>	140/200, 170/240, 200/300
<i>Close-up photo</i>	YES



GREY



MUSTARD



PETROL

Agner



<i>Model</i>	AGNER
<i>Quality</i>	HAND-WOVEN
<i>Surface composition</i>	WOOL
<i>Fringes</i>	NO
<i>Sizes (cm)</i>	140/200, 170/240, 200/300, 250/350
<i>Close-up photo</i>	YES



BEIGE



GREY



CHARCOAL

Gorm



<i>Model</i>	GORM
<i>Quality</i>	HAND-WOVEN
<i>Surface composition</i>	WOOL/POLYESTER
<i>Fringes</i>	YES
<i>Sizes (cm)</i>	80/250, 140/200, 170/240, 200/300
<i>Close-up photo</i>	NO



IVORY



CHARCOAL

Turid



<i>Model</i>	TURID
<i>Quality</i>	HAND-KNOTTED
<i>Surface composition</i>	WOOL
<i>Fringes</i>	NO
<i>Sizes (cm)</i>	140/200, 170/240, 200/300
<i>Close-up photo</i>	NO



MIXED

Vantaa



<i>Model</i>	VANTAA
<i>Quality</i>	SHAG-PILE
<i>Surface composition</i>	WOOL
<i>Fringes</i>	NO
<i>Sizes (cm)</i>	140/200, 170/240, 200/300 Ø200
<i>Close-up photo</i>	NO



WHITE

Torun



<i>Model</i>	TORUN
<i>Quality</i>	HAND-KNOTTED
<i>Surface composition</i>	WOOL
<i>Fringes</i>	YES
<i>Sizes (cm)</i>	140/200, 170/240, 200/300
<i>Close-up photo</i>	NO



EARTH



BLACK

Valdi



<i>Model</i>	VALDI
<i>Quality</i>	HAND-WOVEN
<i>Surface composition</i>	WOOL/POLYESTER
<i>Fringes</i>	YES
<i>Sizes (cm)</i>	140/200, 170/240, 200/300
<i>Close-up photo</i>	YES



BEIGE



CHARCOAL

Nessa



<i>Model</i>	NESSA
<i>Quality</i>	HAND-WOVEN
<i>Surface composition</i>	JUTE
<i>Fringes</i>	YES
<i>Sizes (cm)</i>	140/200, 170/240, 200/300
<i>Close-up photo</i>	YES



ANTHRACITE



NATURAL

Rana



<i>Model</i>	RANA
<i>Quality</i>	HAND-WOVEN
<i>Surface composition</i>	JUTE
<i>Fringes</i>	YES
<i>Sizes (cm)</i>	80/150, 80/250, 140/200, 160/230 200/300
<i>Close-up photo</i>	YES



NATURAL

Aslak



<i>Model</i>	ASLAK
<i>Quality</i>	HAND-WOVEN
<i>Surface composition</i>	JUTE
<i>Fringes</i>	YES
<i>Sizes (cm)</i>	140/200, 160/230, 200/300
<i>Close-up photo</i>	YES



NATURAL

Sigyn



<i>Model</i>	SIGYN
<i>Quality</i>	HAND-WOVEN
<i>Surface composition</i>	WOOL/VISCOSE
<i>Fringes</i>	YES
<i>Sizes (cm)</i>	80/150, 80/250, 140/200, 170/240 200/300, 250/350
<i>Close-up photo</i>	YES



STONE



NATURAL



ANTHRACITE



GREY

40 YEAR BIRTHDAY

Founded in 1980 by Hugo Anthon, Keld Agerskov, and later joined by Jesper Christiansen and Kenneth Nielsen in 1999, Linie Design is proud to celebrate its 40th anniversary on 1 April 2020. From the outset Linie Design had a very clear objective; to create a rug company based on the Scandinavian qualities of simplicity, durability and excellence in both the design and craftsmanship.

That still holds true today, as owners Kenneth and Jesper uphold Linie Design's mission of being a leading provider of unique, high-quality rugs for thousands of homes worldwide.

THANK YOU

101 COPENHAGEN
3 FALKE INTERIOR
&TRADITION
ADORNO
ALEJANDRO URRUTIA
ANDERS HENCKEL
ANKER & CO
ASTEP
ASTRID HENCHEL
ATELLIER CPH
AURE
BRIUTESI
C/RO
CARLANDER SANGKOYO
CASINA
DAVIDE RONCO
ELSE—RIKKE BRUN
ERIK JØRGENSEN
FJORD INTERIOR
FLOS
FRIEND & FOUNDERS

FRAMA
GUBI
HANDVÄRK
HENRIK FREDERIKSEN
HENRIK GLAHN
HENRIETTE MØRK
IDA ELKE
JOTUN
JULIEN MANAIRA
KARAKTER CPH
KARIMOKU
KRISTA ROSENKILDE
KRISTINA DAM
LARS WORM
LUCEPLAN
MARIA LENSJKJOLD
MERETE VYFF
MENU
METTE SANDFÆR
MONIQUE EGELUND
MR. LARKIN

MUNK COLLECTIVE
NEW WORKS
NOA GAMMELGAARD
NODARI
NOORSTAD
NORR11
OLER MYNSTER
PAUSTIAN
PHOLC
RUBN
SIRIN
SISSE LEE
TINA MARIE CPH
TIMBR
TOM ROSSAU
TROELS FLENSTED
SACRE COEUR
SPALT PR
VIC WRIGHT
WÄSTBERG



LINIE DESIGN

HANDMADE RUGS

Established in Denmark in 1980 with the desire to create quality rugs, Linie Design now has customers in over 70 countries and has grown to become the largest rug developer in Northern Europe. The secret to our success is intrinsically linked to our Nordic design traditions – clear lines, simplicity and uncluttered aesthetics – all woven together in uncompromising quality from start to finish.

Our vision is to fill homes with beauty, adding value to everyday lives by creating elegant and functional designs that are made to last. Skilled Danish designers seek to fuse modern designs with timeless and traditional crafts, constantly exploring new ideas and patterns to create unique and innovative designs that add atmosphere and personality to a room.

Each rug is carefully handcrafted by Indian master artisans, using traditional methods passed down through generations, ensuring authenticity and a consistently high quality.

We are committed to supporting local communities, ensuring safe and efficient working practices, while consciously attempting to minimise our environmental impact. All our products are developed and produced in compliance with relevant international and national regulatory requirements. By striving to understand our customers' unique needs, we aim to provide a professional and personal service based on traditional values of honesty, openness and trust.

COME VISIT US

Come and visit Linie Design's stunning showroom in Lynge, just north of Copenhagen, designed by our Chief Retail and Interior Designer Hanne Kortegaard. Our new 450m² showroom is purpose-built to display our full collection of handmade rugs in a beautiful setting, giving you the opportunity to see and feel the different weaving techniques, materials and colours close up.

Please contact us on +45 48 18 90 66 or info@liniedesign.dk to book an appointment, and we would be delighted to show you around, advise you and offer ideas and inspiration for rug styling and solutions.

LINIE DESIGN

GRANLYET 7 · 3540 LYNGE · DENMARK
T: +45 48 18 90 66 · INSTAGRAM: @LINIEDESIGN

WWW.LINIEDESIGN.COM

