



FAMEG



{ collection }  
2019/20

FAMEG

# { contents }

chairs, armchairs,  
rockers,  
bar stools, stools,  
sofas, lounge chairs, coat racks

krzesa, fotele, bujaki,  
stołki barowe, taborety,  
sofy, wieszaki

12

tables,  
coffee tables  
stoły, stoliki kawowe

162

history / historia

6

designers / projektanci

8

finishes / wykończenia

186

index / indeks

197

{ history }

## our history

From the very beginning our company was based on an exceptional heritage of a brilliant Viennese inventor, the forefather of beech wood bending, the pioneer in the field of bent furniture production on an industrial scale – Machael Thonet. In 1881, his sons founded the 'Thonet Brothers Factory' in Radomsko, which to this day produces classic Thonet furniture, famous for its style, lightness and exceptional longevity.

### Conquering the world

Remarkably comfortable chairs produced in the 19th century by a family company won the hearts of frequent visitors to Viennese cafés and then charmed the whole Europe, winning awards and fame around the world. The most famous enthusiasts and users of these chairs included Johannes Brahms, Charlie Chaplin, Marilyn Monroe, Liza Minnelli and Pablo Picasso. Our company continues this tradition, which since the fifties of the previous century, has operated under the name 'Fameg' which is an abbreviation of 'Fabryka Mebli Giętych' – Bent Furniture Factory.

We are continuously perfecting the production of furniture that was appreciated in all continents. Being the heir of almost 140 yearlong unique technology, we are still developing and currently we are one of the biggest producer of bent wood chairs in Europe and we are among the industry leaders around the world.

### Obliged by tradition

Today, the company has over 700 employees and applies advanced technologies, yet as before a century, the priorities remain the same – precision and attention to detail. Owing to a close cooperation with renowned Polish and European designers our chairs and armchairs earn industry recognition by winning international awards and distinctions and, what is more important – admiration among our clients. We are looking into the future with optimism, seeing how the universal and timeless design of Fameg furniture finds itself in classic and modern interiors.

## nasza historia

Od samego początku działalność naszej firmy oparta była na niezwykłym dziedzictwie genialnego wiedeńskiego wynalazcy, prekursora gięcia drewna bukowego, pioniera w dziedzinie produkcji mebli giętych na skalę przemysłową - Michaela Thoneta. Jego synowie, w roku 1881, uruchomili w Radomsku zakłady „Bracia Thonet”, produkujące po dziś dzień, klasyczne meble thonetowskie, słynące ze swej stylistyki, lekkości i wyjątkowej długowieczności.

### Podbój świata

Produkowane w XIX wieku przez rodzinną firmę niezwykle wygodne krzesła, podbiły serca bywalców wiedeńskich kawiarni, a następnie zachwyciły całą Europę, zdobywając nagrody i rozgłos na świecie. Do najbardziej znanych miłośników i użytkowników należeli między innymi Johannes Brahms, Charlie Chaplin, Marilyn Monroe, Liza Minnelli i Pablo Picasso. Kontynuatorem tej tradycji jest nasza firma, która od lat 50. działa pod nazwą „Fameg”, będącą skrótem od słów „Fabryka Mebli Giętych”.

Nieprzerwanie doskonalimy produkcję mebli, docenionych na wszystkich kontynentach. Będąc spadkobiercami prawie 140 letniej unikalnej technologii, wciąż się rozwijamy i obecnie jesteśmy jednym z największych producentów drewnianych krzesel giętych w Europie oraz należymy do liderów tej branży na świecie.

### Tradycja zobowiązuje

Przedsiębiorstwo zatrudnia dziś ponad 700 pracowników i stosuje zaawansowane technologie, jednak tak samo jak przed ponad wiekiem priorytetem pozostaje dla nas staranność rzemiosła, precyzja wykonania i szczególna dbałość o detale. Dzięki ścisłej współpracy z cenionymi polskimi i europejskimi projektantami, nasze krzesła i fotele zyskują uznanie w branży, zdobywając międzynarodowe nagrody i wyróżnienia, a także, co najważniejsze – uznanie naszych klientów. Z optymizmem patrzymy w przyszłość, widząc jak uniwersalne i ponadczasowe wzornictwo mebli Fameg na nowo odnajduje się w klasycznych i nowoczesnych wnętrzach.



2017



2018



2019

# { designers }



Założona przez architektów Dominikę Buck i Pawła Buck, wielokrotnie nagradzana, multidyscyplinarna pracownia projektowa zajmująca się projektowaniem wnętrz, przedmiotów użytkowych oraz identyfikacji wizualnej. Specjalizuje się w opracowywaniu konceptów i strategii dla przestrzeni publicznych dedykowanych przedsięwzięciom gastronomicznym, handlowym i usługowym. Realizuje projekty w Polsce i zagranicą. Projektanci m.in. cukierni Nanan, bistro Dinette, kina Nowe Horyzonty i restauracji Campo, która w 2018 roku otrzymała w Londynie nagrodę za najlepszy projekt wnętrz restauracji na świecie.



**BUCK.STUDIO**  
A multi-disciplinary design studio founded by architects Dominika Buck and Pawel Buck, recognised with numerous awards, offering interior, practical and visual identification design. They specialise in developing concepts and strategies for public spaces intended for catering, trade and services. The studio prepares projects in Poland and abroad. Proud designers of e.g. the Nanan patisserie, the Dinette bistro, and the Campo restaurant – which received a prize for the best restaurant-interior design in the world in London in the year 2018.

Absolwent ASP Warszawa wydziału wzornictwa przemysłowego. Autor wielu serii meblowych sprzedawanych przez największych producentów i dystrybutorów mebli w Polsce i na świecie. Specjalizacja krzesła - mieszkaniowe, restauracyjne, hotelowe, kinowe oraz audytoryjne, w które wyposażonych jest ponad 400 dużych obiektów od filharmonii do hal widowiskowo-sportowych. Laureat wielu nagród. Wartość sprzedanych zaprojektowanych mebli i akcesoriów znacznie przewyższyła 1mln złotych.



### Stanisław Charaziak

A graduate of the Warsaw Academy of Fine Arts, with a degree in Industrial Design. Author of many furniture lines sold by the largest furniture producers and distributors in Poland and throughout the world. He specialises in chairs – for home use, restaurants, hotels, cinemas and auditoria. His chairs can be found in over 400 large venues – from philharmonics to sports and entertainment arenas. Recognised with numerous awards. The sales value of the furniture and accessories he has designed has hit the PLN 1 bn mark.

Absolwentka architektury wnętrz (specjalizacja: projektowanie wystaw) i grafiki na warszawskiej Akademii Sztuk Pięknych, oraz exhibition design na Politecnico di Milano. Zajmuje się projektowaniem wystaw, mebli, grafiki użytkowej.



### Ewelina Cis

An Interior Architecture (major: exhibition design) and Graphics graduate of the Warsaw Academy of Fine Arts, and an Exhibition Design graduate of the Politecnico di Milano. She offers exhibition, furniture, utility graphics design.

Urodzony w 1972 w Jasie, uczył się Meblarstwa Artystycznego w zakopiańskiej szkole "Kenara", studiował Architekturę Wnętrz na Wrocławskiej ASP. W 1998 tworzył repliki starych mebli. Od 2000 specjalizuje się w projektowaniu mebli przeznaczonych dla produkcji wielkoseryjnych. Współpracował z wieloma polskimi fabrykami. Produkty nagrodzone w wielu kategoriach. Od 2010 projektuje meble we własnym studiu "STROOG Design". Od 2013 współpracuje z Fabryką Mebli Giętych FAMEG.



### Andrzej Lećkoś

Born in 1972 in Jasło, he majored in Artistic Furniture-Making at the Antoni Kenar Arts Secondary in Zakopane and went on to study Interior Architecture at the Wrocław Academy of Art and Design. In 1998, he was producing replicas of vintage furniture. From 2000 onwards, he has been focussing on designing furniture for mass production. He collaborated with numerous Polish factories. His products have been recognised with awards in multiple categories. Since 2010, he has been designing furniture in his own "STROOG Design" practice. Has been cooperating with Bentwood Furniture Factory FAMEG since 2013.

Projektant, architekt wnętrz - urodzony w 1986r w Radomiu, design to tworzenie rzeczywistości na nowo. W projektowaniu stara się zachować złote proporcje nad formą i funkcją. Jest absolwentem Wydziału Wzornictwa Akademii Sztuk Pięknych w Warszawie. W Warszawie prowadzi swoje studio projektowe Mitek Design zajmujące się projektowaniem produktu oraz wnętrzami.



### Michał Mitek

Designer and interior architect. Born in 1996 in Radom, he recreates reality through design. Tries to maintain the divine proportion between form and function. After obtaining a degree in Industrial Design from the Warsaw Academy of Fine Arts, he chose Warsaw as the location of his design practice Mitek Design, where he offers product and interior design.

Jesteśmy studium projektowym zajmującym się projektowaniem produktu. Realizujemy projekty z obszarów szeroko pojętego wyposażenia domu i nie tylko. Pracujemy w różnych technologiach oraz materiałach m.in.: w drewnie, konglomeracie, tworzywach. Projektujemy były większe gabarytowo takie jak wanny czy kolekcje mebli oraz drobniejsze – uchwyty czy odświeżacze łazienkowe. Interesują nas różne zjawiska i działania – od nowych technologii i materiałów po tradycyjne rzemiosło. Bliska jest nam estetyka prostoty. Wyznajemy zasadę, aby zaprojektowane przedmioty nie były sezonowe, nie podlegały modom i pozostały niezmiennie funkcjonalne i atrakcyjne pomimo upływu czasu.



### MOWO Studio

We are a product design studio. We do projects in broadly understood home equipment. We work with various technologies and materials, for example wood, composite stone, plastics. We design bulky objects, such as bath tubs, furniture collections, as well as smaller ones – handles, bathroom air-fresheners. We are interested in different phenomena and activities, ranging from new technologies and materials to traditional crafts. We swear by simplicity. It is our ambition for our designs not to age, but preserve their appeal and functionality despite the passage of time.

Muka Design Lab to wielokrotnie nagradzane studio z Kraju Basków, zajmujące się wzornictwem przemysłowym i specjalizujące się w projektowaniu produktów z charakterem – mebli, towarów konsumenckich i wnętrza. Studio powstało w 2011 r., jego założycielami są Laxmi Nazabal i Lucas Abajo. Oboje ukończyli z wyróżnieniem Projektowanie Produktu MDES na uniwersytecie w Coventry. Laxmi jest równocześnie absolwentką kierunku sztuk pięknych, co wzbogaca ich projekty o tworcze rozwiązania, barwy i estetykę. Z kolei Lucas, który jest absolwentem inżynierii, wnosi do projektów strukturę, formę i kształt, co owocuje zrównoważonymi projektami, będącymi w harmonii z otoczeniem. Ich projekty pojawiały się w Architectural Design, Fast Company, Archi Expo, Archi Expo, Dezeen czy El Pais, były wystawiane na międzynarodowych targach projektowych, od Mediolanu po Los Angeles, oraz wyróżniane nagrodami, takimi jak ReD dot Design award 2015. Produktem codziennego użytku nadają osobowość, od konceptu do gotowego wyrobu.



### Muka Design Lab

Muka Design Lab is an award winning industrial design studio from the Basque Country in Spain that specializes in product design to create furniture, consumer goods and interiors with character. The studio was created in 2011 by Laxmi Nazabal and Lucas Abajo, they both graduated with honors in 2006 in MDES Product Design at Coventry University. Laxmi graduated also in Fine Arts brings creativity, color and aesthetic to their projects and Lucas who has a degree in Engineering brings structure, form and shape to create balanced designs, that reflect harmony with their surroundings. Their work has proudly been featured in Architectural Design, Fast Company, Archi Expo, Dezeen or El Pais, exhibited at international design expos from Milan to Los Angeles and awarded with different design prizes such as ReD dot Design award 2015. They take everyday products and give them personality from concept to reality.

Obaj ukończyli Wzornictwo Przemysłowe na Uniwersytecie Artystycznym w Poznaniu, dziś pracują w macierzystej Uczelni. Od 2014 prowadzą studio PAWIAK & STAWARSKI, realizując projekty z zakresu wzornictwa, projektowania mebla, grafiki, wnętrza i wystaw. W pracy łączą różne temperatury oraz indywidualne doświadczenia. Ich projekty wyróżnia oryginalność, stosowanych rozwiązań oraz dopracowanie funkcji i detalu. Za swoją pracę zostali wielokrotnie nagrodzeni w kraju i zagranicą.



### Bartłomiej Pawlak, Łukasz Stawarski

Both graduated from the University of the Arts in Poznań with a degree in Industrial Design and have stayed on as academic staff at their alma mater. Owners at the PAWIAK & STAWARSKI studio, they produce projects in industrial design, furniture design, graphics, interiors and exhibitions. In their work, they combine different personalities and individual experiences. Their projects are set apart by the originality of their solutions and great attention to function and detail. They have received numerous awards for their work both in Poland, and abroad.

Absolwentka Państwowego Liceum Sztuk Plastycznych im. Antoniego Kenara w Zakopanem – kierunek Meblarstwo Artystyczne i Wydziału Wzornictwa i Architektury Wnętrz Akademii Sztuk Pięknych we Wrocławiu. Projektantka zajmuje się przede wszystkim projektowaniem wzornictwa, identyfikacją wizualną, aranżacją wnętrz, wystawiennictwem, scenografią, projektowaniem tkanin, odzieży, elementów wyposażenia wnętrz oraz malarstwem. Dba o to, by niepowtarzalne walory estetyczne szyły w parze z oryginalnymi rozwiązaniami funkcjonalnymi. Projektuje meble do produkcji seryjnej. Prowadzi autorskie wykłady i warsztaty projektowe z uwzględnieniem recyklingu i upcyklingu. Posiada autorską kolekcję siedzisk PEKALA DESIGN, która łączy nowość, tradycję i ekologię. Meble wystawiane były na licznych wystawach w kraju i zagranicą.



### Małgorzata Pękala

A former student of the the Antoni Kenar Arts Secondary in Zakopane, where she majored in Artistic Furniture-Making, and a graduate of the Industrial Design and Interior Architecture at the Wrocław Academy of Art and Design. The designer handles industrial design, visual identification, interior designer, exhibition design, stage design, fabrics & fashion design, interior equipment design and painting. She is careful for the outstanding aesthetic qualities to match the original functional solutions. She designs furniture for mass production. She also conducts original design lectures and workshops, including recycling and upcycling. The author of a collection of seats PEKALA DESIGN, which combines modernity, tradition and ecology. Her furniture was featured at numerous exhibitions in Poland and abroad.





**arch A-1801**  
H 810 H 560 H 490 H 480



**arch B-1801**  
H 810 H 580 H 560 H 480 H 690

arch



hips A-1802

# hips



**hips** A-1802  
H 800 H 520 H 490 H 460

**hips** A-1802  
H 800 H 520 H 490 H 470



**hips** A-1802/1  
H 800 H 520 H 490 H 470

# hips

| hips design: Pawlak & Stawarski |



**hips** B-1802  
h 770 h 650 h 640 h 400



**hips** B-1802/1  
h 770 h 650 h 640 h 420



**hips** B-1802  
h 770 h 650 h 640 h 420





hips B-1802

// 17

# nopp

| nopp design: BUCK-STUDIO |



**nopp A-1803**  
h 795 h 500 h 440 h 460



**nopp BB-1803**  
h 755 h 565 h 590 h 400 h 610



**nopp B-1803/1**  
h 790 h 520 h 550 h 480 h 670



**nopp BST-1803**  
h 985 h 470 h 430 h 750





# rino / lava

rino design: MOWO Studio / lava design: STROOG Andrzej Łęckoś



**rino** B-1622  
H 825 H 590 H 690 H 460 H 655



**lava** A-1807  
H 855 H 565 H 510 H 480

**lava** B-1807  
H 855 H 600 H 530 H 490 H 685

# polar



**polar** B-1806  
H 710 H 700 P 920 H 420



**polar** BB-1806  
H 710 H 700 P 1680 H 420

# montana

montana design: STROOG Andrzej Leckóś



**montana** BB-1430  
H 810 H 800 H 1370 H 410 H 590



**montana** B-1430  
H 810 H 800 H 680 H 410 H 590

# snug



**snug** A-1515/1  
H 400 H 800 P 800 H 400



**snug** B-1515/2  
H 750 H 800 P 800 H 400



**snug** B-1515/3  
H 750 H 800 P 800 H 400

# nod

| nod design: Pawlak & Stawarski |



**nod A-1620**  
H 835 H 535 P 430 H 460



**nod A-1620/1**  
H 835 H 535 P 430 H 470



**nod B-1620/1**  
H 810 H 705 P 640 H 430







nod BST-1620/2, nod BST-1620



**nod** BST-1620  
h 750 h 500 h 450 h 750

**nod** BST-1620/2  
h 1050 h 510 h 475 h 780

nod



kos A-1621

# kos



**kos A-1621**  
H 820 H 560 P 445 H 460



**kos B-1621**  
H 820 H 560 P 555 H 460 H 665

# ronda / malibu

| ronda / malibu design: STROOG, Andrzej Łękoś |



**ronda** A-1702  
h 850 h 520 h 480 h 460



**malibu** A-1506  
h 820 h 540 h 495 h 490

**malibu** A-1506  
h 820 h 540 h 495 h 460





cleo A-1602





**cleo** A-1601  
h 885 h 530 h 440 h 480

**cleo** A-1602  
h 885 h 530 h 440 h 460

cleo

# cleo

cleo design: STROOG Andrzej Łękosz



**cleo A-1603**  
h 905 h 530 h 455 h 480



**cleo A-1604**  
h 890 h 530 h 450 h 490



**cleo A-1605**  
h 890 h 530 h 440 h 480



**cleo BST-1603**  
h 865 h 480 h 470 h 760



**cleo BST-1605**  
h 865 h 480 h 470 h 760



# teba / sara / torino



**teba** A-1606  
h 815 h 525 H 470 h 470

**sara** A-1607  
h 815 h 525 H 470 h 470



**torino** A-1610  
h 870 h 480 H 450 h 480



finn BST-1609/75

# finn



**finn** A-1609  
H 790 H 480 P 430 H 490



**finn** BST-1609/75  
H 750 H 425 P 485 H 750



**finn** BST-1609/61  
H 630 H 425 P 485 H 630



**finn** T-1609/46  
H 460 H 390 P 440 H 460



**finn** T-1609/33  
H 330 H 340 P 375 H 330

# lennox

| lennox design: STROOG, Andrzej Lęckoś |



**lennox A-1405**  
H 850 H 540 H 475 H 470



**lennox B-1405**  
H 850 H 540 H 550 H 470 H 660

# arcos



**arcos A-1403**  
H 880 H 525 H 530 H 475



**arcos B-1403**  
H 880 H 525 H 520 H 460 H 620



**arcos B-1403**  
H 880 H 525 H 520 H 475 H 620



**arcos BST-1403**  
H 1110 H 510 H 480 H 770



# class / hoga

hoga design: Mowo Studio



**class** A-0955  
H 880 H 540 P 465 H 490



**class** B-0955  
H 880 H 540 P 575 H 460 H 700



**class** BST-0955  
H 1030 H 505 P 435 H 780



**hoga** A-1320  
H 830 H 500 P 445 H 460



**hoga** B-1320  
H 830 H 500 P 560 H 480 H 640



**hoga** BST-1320  
H 950 H 495 P 460 H 650





class BST-0955

# harry

| harry design: Charaziak Design |



**harry A-0139**  
H 890 H 520 P 420 H 460



**harry B-0139**  
H 890 H 520 P 535 H 460 H 640



**harry BST-0139**  
H 1140 H 500 P 440 H 770



**harry B-1003/2**  
H 790 H 670 P 650 H 410 H 565





**fame** A-0620  
H 820 H 560 P 440 H 460



**fame** B-0620  
H 815 H 550 P 580 H 480 H 675



fame

# fjord / uma

— fjord design: Mowo Studio / uma design: Ewelina Cis —



**fjord** A-1319

h 850 h 530 h 510 h 460



**fjord** B-1319

h 850 h 520 h 595 h 480 h 700



**fjord** BST-1319

h 1090 h 540 h 505 h 760



**uma** A-1505

h 870 h 545 h 410 h 510



# stream / base



**stream** A-0448  
H 890 H 510 H 425 H 460



**stream** A-0448/N  
H 890 H 510 H 390 H 500



**stream** BST-0448  
H 1100 H 520 H 425 H 750



**base** A-0707  
H 870 H 530 H 460 H 490



**base** BST-0707  
H 1040 H 510 H 430 H 750



**akka** A-0336  
H 840 H 505 H 410 H 490



**akka** BST-0336  
H 1095 H 540 H 495 H 740



akka

# stick / 5910



**stick** A-0537  
H 870 H 460 P 460 H 485



**5910** A-5910  
H 850 H 490 P 435 H 460



**5910** BST-5910  
H 1040 H 440 P 410 H 780



# wand



**wand A-1102/1**  
H 860 H 500 H 510 H 490



**wand B-1102/1**  
H 870 H 530 H 570 H 460 H 690



**wand BST-1102/1**  
H 1075 H 460 H 480 H 750



**wand S-1102/1**  
H 850 H 540 H 1220 H 490 H 670



**wand BJ-1102/1**  
H 870 H 765 H 540 H 490 H 690



**cosy B-1404**  
H 830 H 580 P 555 H 455 H 700

**cosy B-1404**  
H 830 H 580 P 555 H 475 H 700

**COsy**



**pollo** B-1224  
H 880 H 580 P 580 H 480 H 685



**apollo** A-1228  
H 870 H 590 P 415 H 480



**apollo** B-1228  
H 870 H 590 P 590 H 480 H 695

# pollo / apollo



**tulip 1** A-9608  
H 820 H 535 F 445 H 480



**tulip 1** B-9608  
H 820 H 550 F 535 H 480 H 685



**tulip 1** BST-9608  
H 1140 H 545 F 470 H 800

# tulip 1

# tulip 2 / tulip 3



**tulip 2** A-9608/1  
H 820 H 535 H 445 H 480



**tulip 2** B-9608/1  
H 820 H 550 H 560 H 480 H 685



**tulip 2** BST-9608/1  
H 1140 H 545 H 470 H 800



**tulip 3** A-0031  
H 820 H 540 H 430 H 460



**tulip 3** B-0031  
H 820 H 540 H 530 H 480 H 680



**tulip 3** BST-0031  
H 1140 H 550 H 440 H 800

# solid



**solid A-9449**  
H 835 H 510 P 450 H 460



**solid A-9449/1**  
H 835 H 510 P 450 H 490



**solid B-9449**  
H 835 H 510 P 530 H 460 H 665



**solid B-9449**  
H 835 H 510 P 530 H 490 H 665



**solid B-9449/1**  
H 835 H 510 P 530 H 490 H 665



**solid BST-9449**  
H 1090 H 465 P 450 H 750



**avola** A-1411  
H 855 H 540 H 480 H 490



**avola** BST-1411  
H 1065 H 515 H 440 H 780

avola



amada BST-1412



# alora / amada



**alora** A-1412  
H 855 H 540 P 495 H 490



**alora** BST-1412  
H 1065 H 515 P 450 H 790



**amada** A-1413  
H 855 H 540 P 480 H 490



**amada** BST-1413  
H 1075 H 515 P 440 H 780



**shell** B-1234  
H 680 H 640 H 660 H 410 H 500

# shell



shell B-1234



**ufo** BST-9972/75  
H 750 H 410 H 410 H 750



**ufo** BST-9972/61  
H 650 H 410 H 410 H 650



**ufo** T-9972/46  
H 460 H 410 H 410 H 460

ufo



**wave** BST-0506  
H 750 H 340 P 340 H 750



**square** BST-0515/1  
H 800 H 340 P 340 H 800



**conran** BST-0461  
H 780 H 380 P 380 H 780



# wave / square / conran



**ginko** A-1315  
H 830 H 370 H 405 H 460

**ginko** BST-1315  
H 1120 H 455 H 405 H 750

ginko

# ray



**ray A-1209**  
h 835 h 530 H 450 h 500



**ray B-1209**  
h 835 h 530 H 555 h 500 h 660



**ray BST-1209**  
h 770 h 380 H 450 h 770



**ray BST-1209/1**  
h 900 h 460 H 390 h 770



# joy



**joy** A-9731  
H 820 H 525 H 515 H 460



**joy** A-9731/12  
H 820 H 525 H 515 H 460



**joy** A-9731/?  
customer design / wzór klienta



**joy** B-9731/12  
H 820 H 525 H 515 H 460 H 680



**joy** BST-9731/12  
H 1090 H 485 H 420 H 780



# goodluck / tari



**goodluck** A-0935  
H 870 H 535 P 480 H 460



**tari** A-0501  
H 795 H 535 P 445 H 465



**tari** A-0501/4  
H 210 H 410 P 315 H 210



**tari** A-0501/8  
H 210 H 410 P 575 H 210

# puppy / cortina / laser

| cortina / laser design: STROOG Andrzej Łękoś |



**puppy** A-9349  
h 760 h 470 h 430 h 460



**cortina** A-1701  
h 875 h 545 h 430 h 460

**laser** A-1511  
h 800 h 520 h 440 h 460



**venus** BJ-0321  
H 1030 H 960 H 565 H 520 H 655

venus

# nino / kiddy

| nino design: MOVVO Studio |



**nino** MDK-1710  
H 520 H 330 H 300 H 275



**nino** BST-1710  
H 740 H 415 H 380 H 500



**kiddy** MDT-9970  
H 760 H 485 H 485 H 505

certificate / certyfikat  
BS EN 14988-1&2:2006 + A1:2012  
BS EN 71-3:2013

# nino



**nino** STK-1710  
□ 510 □ 670 □ 670



**nino** SK-1710  
□ 460 □ 365 □ 790



**nino** MDT-1710  
□ 540 □ 185 □ 1030







↑ malibu, A-1506  
Restaurant / Restauracja 14th LANE, Bukareszt; design: Yellow Office; photo / fot. Cosmin Dragomir

**fame A-0620**

Restaurant / Restauracja Emalia Zabłocie, Kraków; photo / fot. Marta Sputo





stick, fame, 18, A-0537, A-0620, A-18

Restaurant / Restauracja Emalia Zabłocie, Kraków; photo / fot. Marta Sputo



**uma, stick, A-1505, A-0537**

PASIBUS Posnania Gallery / PASIBUS Galeria Posnania, Poznań;  
design: CUDO Grupa Projektowa; photo / fot. Kamil Sypień





↑ **uma, stick, A-1505, A-0537**  
PASIBUS Fashion Outlet, Wrocław; design: CUDO Grupa Projektowa; photo / fot. Kamil Sypień





**finn, A-1609**

Restaurant / Restauracja Yeżyce Kuchnia, Poznań; design: Adam Wierciński, Agnieszka Owsiany; photo / fot. PION Studio

solid, stick, A-9449, A-0537

Cafe / Kawiarnia Paper Concept, Poznań; design: 370 studio & Dembowska Jagiełło



**solid, A-9449, BST-9449**  
M15 Restaurant & Bar & Sauny, Sopot; design: Studio Turbo





Nr	Piwo	STYL	WYMIAR
1	BIRDANT CTRA	AMBER IPA -BARANT-	10/12
2	LET'S Cook	COOL SOFT BEER -DUP- -DUP-	11/14
3	MISTY	GENUINE IPA -TRUCK-	11/14
4	KINGS OF THE SUN	NEW ZEALAND IPA -RABUGA-	12/15
5	Hula Hop	-Rie- -Rie-	11/14
6	SALAMANT ER	IPA -St. Michael-	10/13
7	ART+9	GENUINE BEER -St. Michael-	11/14
8	Legenda Krola	RJ5 -Legenda Krola-	21/28





fjord, A-1319

Jan Olbracht Old Town Brewery, Browar Staromiejski Jan Olbracht, Toruń



**shell, B-1234**

Parle Patisserie, Poznań; design: JAGODY Studio;  
photo / fot. Weronika Trojanowska



**shell, B-1234**  
Etno Cafe Forum, Gdańsk





↑ **uma, A-1505**  
Avena by Artery Hotels, Kraków; design: Grycaj Design, Iliard Architecture & Project Management





cosy, alora, B-1404, B-1412  
Restaurant / Restauracja Nova Resto Bar, Kraków





**nopp, B-1803, BST-1803**  
Restaurant / Restauracja Surfer, Wrocław



**nopp, A-1803, B-1803**  
Restaurant / Restauracja Opasy Tom Kreglicy,  
Warszawa; design: Buck Studio;  
photo / fot. PION Studio







diana B-0253

# diana



**diana** A-0253  
H 945 H 500 P 420 H 480



**diana** B-0253  
H 945 H 585 P 590 H 480 H 670



**diana** BST-0253  
H 1215 H 530 P 420 H 780

# berg / elegant / rar / egon

| egon design: Charaziak Design |



**berg** B-0411  
H 740 H 550 H 530 H 490 H 730



**elegant** B-9633  
H 780 H 540 H 560 H 490 H 760



**rar** B-0022/1  
H 750 H 505 H 660 H 470 H 640



**egon** B-9744  
H 820 H 590 H 690 H 490 H 700



# cube / skip / arc



**cube** B-1523  
h 710 h 560 h 570 h 470 h 660

**skip** B-1524  
h 710 h 560 h 570 h 470 h 660



**arc** B-0810  
h 750 h 630 h 600 h 480 h 710

# comfy / simple



**comfy** A-423  
H 900 H 585 P 460 H 480

**comfy** BST-423  
H 1115 H 490 P 440 H 780

**comfy** BST-423/2  
H 780 H 430 P 430 H 780



**simple** A-9456  
H 830 H 470 P 430 H 480

**simple** BST-9456  
H 1105 H 465 P 435 H 760



# bistro 1 / bistro 2



**bistro 1** A-9907/2  
h 860 h 525 h 450 h 480



**bistro 1** BST-9907/2  
h 1100 h 540 h 470 h 760



**bistro 2** A-9907  
h 860 h 525 h 450 h 480



**bistro 2** BST-9907  
h 1100 h 540 h 460 h 760

# flat / edgy



**flat** A-0811  
H 875 H 520 H 480 H 480



**flat** BST-0811  
H 1190 H 545 H 470 H 800



**edgy** A-1107  
H 830 H 510 H 430 H 480



**edgy** BST-1107  
H 1145 H 530 H 470 H 800



# oval / ludwig



**oval** A-0951  
H 965 H 545 P 470 H 480



**ludwig** A-9702/1  
H 950 H 610 P 470 H 500



**ludwig** B-9702/1  
H 950 H 610 P 570 H 500 H 705



**ludwig** BST-9702/1  
H 1260 H 530 P 480 H 790

# royal / reno



**royal** A-9866/3  
h 970 h 550 h 455 h 480



**reno** A-0133/1  
h 900 h 560 h 475 h 510

**reno** B-0133/1  
h 900 h 560 h 580 h 500 h 705

# pub / chili / twirl / soul



**pub** A-0014  
h 900 h 555 h 465 h 460



**pub** BST-0014  
h 1120 h 490 h 460 h 780



**chili** A-1302  
h 860 h 540 h 470 h 480



**twirl** A-9204/102  
h 800 h 470 h 470 h 480



**soul** A-0728  
h 860 h 535 h 460 h 480

# windsor / country / roll



**windsor A-372**  
H 900 H 470 H 450 H 460



**windsor B-372**  
H 970 H 510 H 560 H 460 H 665



**country A-9008**  
H 870 H 535 H 450 H 460



**roll BST-9336**  
H 780 H 340 H 340 H 780



**roll T-9336**  
H 515 H 330 H 330 H 515



roll BST-9336





# novo



**novo A-9610**  
H 870 H 475 H 420 H 490

**novo A-9610/1**  
H 870 H 475 H 420 H 490



**novo B-9610/1**  
H 870 H 520 H 520 H 490 H 710

**novo BST-9610/1**  
H 1090 H 510 H 450 H 780

# emil / capitan / preria

| emil design: Charaziak Design |



**emil** B-9921/4  
H 890 H 760 P 670 H 460 H 640



**capitan** B-9437  
H 770 H 595 P 595 H 490 H 725

**preria** BJ-9340  
H 1110 H 860 P 600 H 520 H 740

# egon / sean



**egon** S-9744  
H 960 H 600 H 1275 H 480 H 710



**sean** S-0807  
H 915 H 550 H 1180 H 490 H 690





novo, A-9610, BST-9610  
Hard Rock Cafe, Wrocław





**bistro 2, A-9907**

Jan Olbracht Old Town Brewery, Browar Staromiejski Jan Olbracht, Toruń; design: 370 Studio





**bistro 2, BST-9907**

Jan Olbracht Old Town Brewery, Browar Staromiejski Jan Olbracht, Toruń; design: 370 Studio







alora, BST-1412  
Nadwiślańska Resto&Vodka Bar, Kraków; photo / fot. Paweł Sarota

alora, avola, A-1412, BST-1412, A-1411

Office / Biuro Kantar TNS, Warszawa; design: Tétris Poland



ufo, BST-9972/75, BST-9972/61

Restaurant / Restauracja Lepione, Wrocław; design: CUDO Grupa Projektowa







**novo, A-9610**

Restaurant / Restauracja Plac Nowy 1, Kraków; design: Double Design; photo / fot. Bartłomiej Senkowski

**skip, cleo, B-1524, A-1605**

Avena by Artery Hotels, Kraków;

design: Grycaj Design, Iliard Architecture & Project Management







↑ **cube, shell, B-1523, B-1234**  
Parle Lounge & Patisserie, Poznań; design: JAGODY Studio; photo / fot. Weronika Trojanowska





# 18



**18 A-18**  
H 880 H 540 P 420 H 490

**18 B-18**  
H 880 H 610 P 560 H 460 H 695



**18 BST-18**  
H 1090 H 535 P 430 H 750



# 811



**811** A-811  
H 805 H 540 P 455 H 460



**811** A-811/1  
H 805 H 540 P 455 H 490



**811**B-811  
H 805 H 540 P 510 H 490 H 695

811





# 4 / 31



**4A-4**  
H 880 H 570 P 400 H 460



**31A-31**  
H 875 H 540 P 450 H 460

# 14 / 16



**14 A-14**  
H 880 H 540 F 410 H 460



**16 A-16**  
H 880 H 520 F 410 H 460

**16 B-16**  
H 880 H 620 F 550 H 490 H 700



# 9 / 10 / 8033



**9B-9** H 835 H 600 H 600 H 490 H 700   **9B-9/1** H 835 H 600 H 600 H 490 H 700   **9B-9/2** H 800 H 600 H 600 H 480 H 650



**10A-10** H 885 H 535 H 440 H 490   **10B-10** H 885 H 615 H 530 H 490 H 695   **8033B-8033** H 865/1020 H 650 H 530 H 430/600 H 670/830

# 1260 / 8139 / 8526 / 9817



**1260** A-1260  
H 820 H 470 P 425 H 490



**1260** BST-1260  
H 1060 H 500 P 465 H 750



**8139** A-8139  
H 880 H 540 P 410 H 460



**8526** A-8526  
H 880 H 540 P 400 H 490



**9817** A-9817  
H 880 H 490 P 400 H 490



# 8810



**8810** A-8810/1  
H 845 H 470 H 430 H 490

**8810** A-8810/2  
H 830 H 470 H 460 H 460



**8810** BST-8810/1  
H 1040 H 530 H 460 H 750

**8810** BST-8810/2  
H 1060 H 515 H 460 H 780



# 0246 / 56 / 0919 9607 / 8145



**0246** A-0246  
h 890 h 475 h 425 h 460



**56** A-56  
h 860 h 480 h 400 h 460



**0919** A-0919  
h 845 h 455 h 400 h 460



**9607** A-9607  
h 870 h 480 h 400 h 490



**8145** A-8145/14  
h 870 h 450 h 440 h 460





# 165



**165 A-165**  
h 775 h 470 h 415 h 490



**165 B-165**  
h 770 h 490 h 550 h 460 h 700



**165 BST-165**  
h 1060 h 510 h 550 h 750 h 960



# 8223 / 788



**8223** A-8223  
h 840 h 460 h 430 h 460



**788** A-788 FAN  
h 795 h 485 h 450 h 490

**788** BST-788 FAN  
h 1060 h 495 h 460 h 780

**788** A-788 VERT  
h 795 h 485 h 450 h 460

# 1406 / 225



**1406 A-1406**  
h 870 h 470 h 465 h 460



**1406 B-1406**  
h 870 h 480 h 540 h 490 h 660



**225 A-225**  
h 785 h 455 h 440 h 490



**225 BST-225**  
h 1070 h 490 h 430 h 750



# 9739 / 302



**9739** T-9739/46  
H 460 H 370 H 370 H 460



**9739** BST-9739/61  
H 640 H 370 H 370 H 640



**9739** BST-9739/80  
H 800 H 370 H 370 H 800



**302** BST-302/75  
H 750 H 450 H 450 H 750

# 0542 / 9451 / 1110



**0542** A-0542  
H 790 H 480 P 450 H 490



**0542** B-0542  
H 740 H 470 P 550 H 460 H 720



**9451** B-9451  
H 760/915 H 500 P 620 H 470/625 H 660/815



**1110** B-1110  
H 750 H 460 P 550 H 460 H 700





9816 BJ-9816

# 9816



**9816** BJ-9816  
H 1010 H 1030 H 520 H 500 H 640



**9816** BJ-9816  
H 1010 H 1030 H 520 H 550 H 640

# 8 / 9955 / 9956



**8** P-8  
I 1845 Y 270 Y 445



**9955** P-9955  
I 300 Y 320



**9956** P-9956  
I 290 Y 400



# 8816 / 16 / 0428



**8816** P-8816  
I 1790 Y 570 Y 570



**16** P-16  
I 1850 Y 600 Y 600



**16** P-16/2204  
I 1850 Y 600 Y 600



**0428** P-0428  
I 1820 Y 730 Y 730

# 6653



**6653** S-6653/L  
H 860 H 580 H 1160 H 440 H 670



**6653** S-6653/16  
H 860 H 580 H 1170 H 445 H 675

# garten 4



**garten 4** GA-4  
H 845 H 570 H 430 H 460



**garten 4** GST-4  
P 770 P 780 P 1100





**8810, 1110, A-8810/2, B-1110**

Restaurant / Restauracja Mamizza, Bukareszt; design: Yellow Office;  
photo / fot. Vladimír Mindru











1260, A-1260, BST-1260  
Cargo Grill & Deli, Kraków; design: Grycaj Design; photo / fot. Bartłomiej Senkowski

9739, BST-9739/80

Bistro Bene by Tomasz Leśniak, Kraków; design: Grycaj Design;  
photo / fot. Bartłomiej Senkowski





9607, A-9607

Bagatelka Recreation and Hotel Center / Centrum Rekreacyjno-Hotelowe Bagatelka, Międzyzdroje







**788, BST-788 FAN**

Czczotka Cocktail Bar, Kraków; design: IPR Development Magdalena Dirbach, Beata Kozłowska;  
photo / fot. Jarosław Florek



**811, B-811**

Yeżyce Kuchnia, Poznań; design: Adam Wierciński,  
Agnieszka Owsiany; photo / fot. PION Studio







788, A-788/FAN, BST-788/FAN

Nadwiślańska Resto & Vodka Bar, Kraków; photo / fot. Paweł Sarota

Sample list of coffee tables with metal / metal-wooden bases  
Przykładowe zestawienia stolików na metalowych / metalowo-drewnianych podstawach



# basic

metal

metal + beech wood / metal + drewno bukowe  
metal + oak wood / metal + drewno dębowe



**basic** ST-1911/1  
□ 730 □ 390 □ 390  
maximum table top size:  
maksymalny rozmiar blatu:  
Ø 800



**basic** ST-1912/1  
□ 730 □ 490 □ 490  
maximum table top size:  
maksymalny rozmiar blatu:  
Ø 900



**basic** ST-1911/2  
□ 730 □ 390 □ 390  
maximum table top size:  
maksymalny rozmiar blatu:  
Ø 800



**basic** ST-1912/2  
□ 730 □ 490 □ 490  
maximum table top size:  
maksymalny rozmiar blatu:  
Ø 900



**basic** ST-1913/1  
□ 730 □ 390 □ 390  
maximum table top size:  
maksymalny rozmiar blatu:  
800x800



**basic** ST-1914/1  
□ 730 □ 490 □ 490  
maximum table top size:  
maksymalny rozmiar blatu:  
900x900



**basic** ST-1913/2  
□ 730 □ 390 □ 390  
maximum table top size:  
maksymalny rozmiar blatu:  
800x800



**basic** ST-1914/2  
□ 730 □ 490 □ 490  
maximum table top size:  
maksymalny rozmiar blatu:  
900x900



**basic** ST-1915/1  
□ 730 □ 490 □ 740  
maximum table top size:  
maksymalny rozmiar blatu:  
1600x900



**basic** ST-1915/2  
□ 730 □ 490 □ 740  
maximum table top size:  
maksymalny rozmiar blatu:  
1600x900

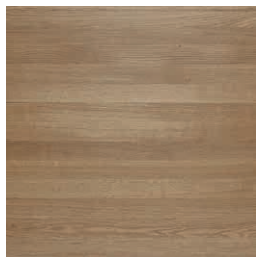
## Table tops / Blaty

Solid wood tabletops / Blaty z litego drewna // available thickness / dostępne grubości: 40 mm

oak wood / drewno dębowe



available dimensions / dostępne wymiary:  
Ø 600, Ø 700, Ø 800, Ø 900



available dimensions / dostępne wymiary:  
600x600, 700x700, 800x800, 900x900



available dimensions / dostępne wymiary:  
700x600, 800x600, 1200x700, 1200x800

beech wood / drewno bukowe



available dimensions / dostępne wymiary:  
Ø 600, Ø 700, Ø 800, Ø 900



available dimensions / dostępne wymiary:  
600x600, 700x700, 800x800, 900x900



available dimensions / dostępne wymiary:  
700x600, 800x600, 1200x700, 1200x800

## Table tops / Blaty

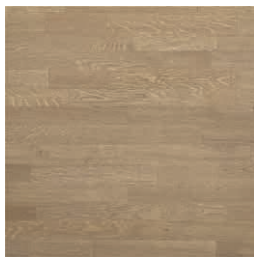
Finger-joined solid wood tabletops / Blaty z litego drewna klejonego na mikrowczep

// available thickness / dostępne grubości: 28 mm, 40 mm

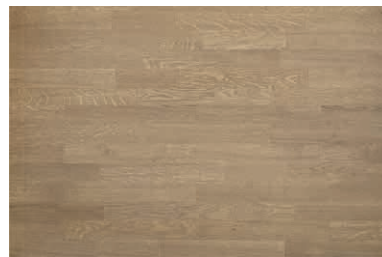
oak wood / drewno dębowe



available dimensions / dostępne wymiary:  
Ø 600, Ø 700, Ø 800, Ø 900, Ø 1000, Ø 1200



available dimensions / dostępne wymiary:  
600x600, 700x700, 800x800, 900x900

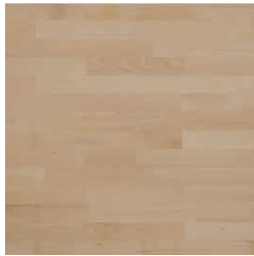


available dimensions / dostępne wymiary:  
700x600, 800x600, 1200x700, 1200x800

beech wood / drewno bukowe



available dimensions / dostępne wymiary:  
Ø 600, Ø 700, Ø 800, Ø 900, Ø 1000, Ø 1200



available dimensions / dostępne wymiary:  
600x600, 700x700, 800x800, 900x900



available dimensions / dostępne wymiary:  
700x600, 800x600, 1200x700, 1200x800

Natural veneer tabletops / Blaty z okleiny naturalnej // available thickness / dostępne grubości: 18 mm, 35 mm

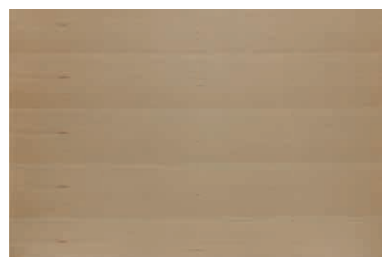
oak wood / drewno dębowe



available dimensions / dostępne wymiary:  
Ø 600, Ø 700, Ø 800, Ø 900



available dimensions / dostępne wymiary:  
600x600, 700x700, 800x800, 900x900

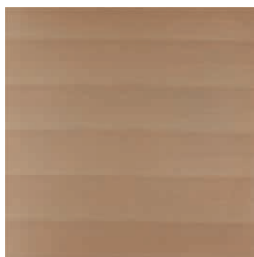


available dimensions / dostępne wymiary:  
1200x800, 1200x900

beech wood / drewno bukowe



available dimensions / dostępne wymiary:  
Ø 600, Ø 700, Ø 800, Ø 900



available dimensions / dostępne wymiary:  
600x600, 700x700, 800x800, 900x900



available dimensions / dostępne wymiary:  
1200x800, 1200x900

# hey

| hey design: Pawlak & Stawarski |



**hey** ST-1711  
□ 730 □ 700/800 □ 700/800



**hey** STK-1711  
□ 510 □ 600/700 □ 600/700



**hey** ST-1712  
□ 730 □ 700/800 □ 700/800



**hey** STK-1712  
□ 510 □ 600/700 □ 600/700

# hey



**hey** ST-1713  
□ 730 □ 700/800 □ 700/800



**hey** STK-1713  
□ 510 □ 600/700 □ 600/700



**hey** ST-1714  
□ 730 □ 700/800 □ 700/800



**hey** STK-1714  
□ 510 □ 600/700 □ 600/700



# candy

| candy design: Pawlak & Stawarski |



**candy** STK-1804  
□ 540 □ 600 □ 500



**candy** STK-1805  
□ 440 □ 600 □ 600



# nod



**1620** STB-1620  
□ 1100 □ 565 □ 515



**nod** STK-1620  
□ 400 □ 700 □ 800

# lennox

| lennox design: STROOG, Andrzej Lęckoś |



**lennox** ST-1405  
□ 750 □ 950 □ 1600/2000/2400



# riva



**riva** ST-1612

□ 760 □ 850 □ 1300/1700/2100

# sierra



sierra ST-1613

□ 760 □ 850 □ 1400/1900/2400/2900



teba ST-1606

# teba



**teba** ST-1606

□ 760 □ 900 □ 1600/2000/2400

# arcos

| arcos design: STROOG Andrzej Leckoś |



**arcos** STK-1403  
□ 500 □ 720 □ 1100

**arcos** ST-1403  
□ 760 □ 900 □ 1600/1800, 1600/1950/2300, 1800/2200/2600



# llow



**llow** ST-1275

□ 770 □ 1000 □ 1600/2600, 1800/3000

# ellipse



**ellipse** ST-0931  
□ 750 □ 1000 □ 1000/1450/1900

# senales



**senales** ST-1703  
□ 760 □ 1150 □ 1150/1550



**senales** ST-1703  
□ 760 □ 850 □ 1400/1900

# pej / bow / bar / rest

| pej design: Pękala Design |



**pej** STK-1034  
□ 470 □ 800 □ 800



**bow** ST-0922  
□ 760 □ 800 □ 800



**bar** ST-9345/2  
□ 750 □ 700, 800, 900 □ 700, 800, 900, 1200



**rest** ST-9345/4  
□ 750 □ 800, 900 □ 800, 900, 1200, 1500

# cortina



**cortina** ST-1701  
□ 760 □ 850 □ 850



**cortina** ST-1701  
□ 760 □ 900 □ 1600/2000/2400

# diana

| diana design: Charaziak Design |



**diana** ST-1277

□ 750 □ 1100 □ 1800/2250/2700

# puf / 9717 / 9718 / 9006 0006 / 9744 / 0258



**puf** STK-1311  
□ 620 □ 850 □ 850



**9717** ST-9717  
□ 750 □ 800 □ 800



**9718** ST-9718  
□ 750 □ 800 □ 800



**9006** ST-9006  
□ 700 □ 800 □ 800



**0006** ST-0006  
□ 700 □ 800, 1050 □ 800, 1050



**9744** ST-9744  
□ 700 □ 800 □ 800



**0258** ST-0258  
□ 755 □ 800 □ 800

# { finishes }



beech wood finishes,  
oak wood finishes,  
other wood finishes,  
embossed seat patterns

wybarwienia drewna bukowego,  
wybarwienia drewna dębowego,  
pozostałe wybarwienia,  
reliefy

186

upholstery

tapicerka

188

additional options

dodatkowe opcje

196

## Beech wood finishes / Wybarwienia drewna bukowego

### standard finish / wykończenie standardowe



**(01)**  
Natural beech  
Buk naturalny



**(02)**  
Honey  
Miodowy



**(06)**  
Rustical  
Rustykalny



**(07)**  
Milky walnut  
Orzech mleczny



**(04)**  
Walnut  
Orzech



**(05)**  
Cognac  
Koniak



**(08)**  
Dark walnut  
Orzech ciemny



**(09)**  
Wenge  
Wenge



**(10)**  
Black stain  
Czarna bejca

### premium finish / wykończenie premium



**(03)**  
White washed  
Biały sprany



**(29)**  
Antique white  
Biały antyczny



**(15)**  
Antique oil  
Olej antyczny



**(13)**  
Yellow stain  
Żółta bejca



**(14)**  
Red stain  
Czerwona bejca



**(12)**  
Green stain  
Zielona bejca



**(11)**  
Grey stain  
Szara bejca



**(16)**  
White  
Biały



**(21)**  
Light green  
Zielony jasny



**(22)**  
Dark green  
Zielony ciemny



**(23)**  
Burgundy  
Bordowy



**(19)**  
Light blue  
Niebieski jasny



**(20)**  
Dark blue  
Niebieski ciemny



**(17)**  
Light grey  
Szary jasny



**(18)**  
Dark grey  
Szary ciemny



**(24)**  
Black  
Czarny

## Oak wood finishes / Wybarwienia drewna dębowego

standard finish / wykończenie standardowe



**(26)**  
Bleached oak  
Dąb bielony



**(25)**  
Natural oak  
Dąb naturalny



**(27)**  
Milky oak  
Dąb mleczny

premium finish / wykończenie premium



**(37)**  
Antique oil oak  
Dąb olej antyczny



**(35)**  
White oak  
Dąb biały



**(36)**  
Black oak  
Dąb czarny

## Other wood finishes / Pozostałe wybarwienia



**(28)**  
Bleached ash  
Jesion bielony



**(34)**  
Accacia\*  
Akacja\*



Forbo pink\*\*  
Forbo różowe\*\*



Forbo grey\*\*  
Forbo szare\*\*

\*Refers to outdoor furniture (GA-4 and GST-4)  
\*Dotyczy mebli ogrodowych (GA-4 i GST-4)

\*\*Refers to NINO collection  
\*\*Dotyczy kolekcji NINO

## Embossed seat patterns / Relief



Rjs



No 5



No 7



No 12\_1/2



No 1



No 29



No 224

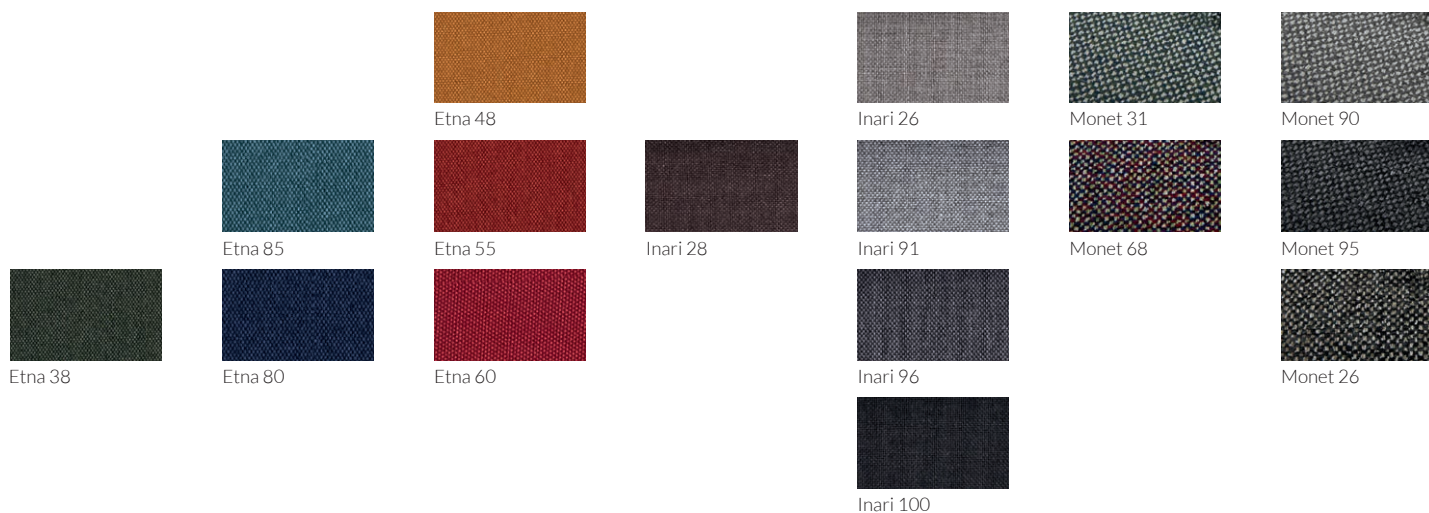


No 23



No 200

## Etna / Inari / Monet group A / upholstery / tapicerka



## Vintage / Dolaro group A / upholstery / tapicerka



## Braveheart group B / upholstery / tapicerka



Braveheart 21 Gold



Braveheart 24 Sunset



Braveheart 29 Damson



Braveheart 03 Teal



Braveheart 07 Limestone



Braveheart 26 Cardinal



Braveheart 01 Spruce



Braveheart 10 Shadow



Braveheart 33 Navy



Braveheart 11 Charcoal



Braveheart 34 Onyx

---

## Chopper group B / upholstery / tapicerka



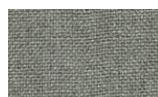
Chopper 503 Gold



Chopper 315 Fire



Chopper 900 Rosewater



Chopper 601 Chrome



Chopper 805 Water



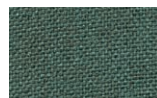
Chopper 303 Magenta



Chopper 905 Nostalgia



Chopper 612 Chocolate



Chopper 702 Petrol



Chopper 002 Passion



Chopper 200 Black



Chopper 714 Imperial



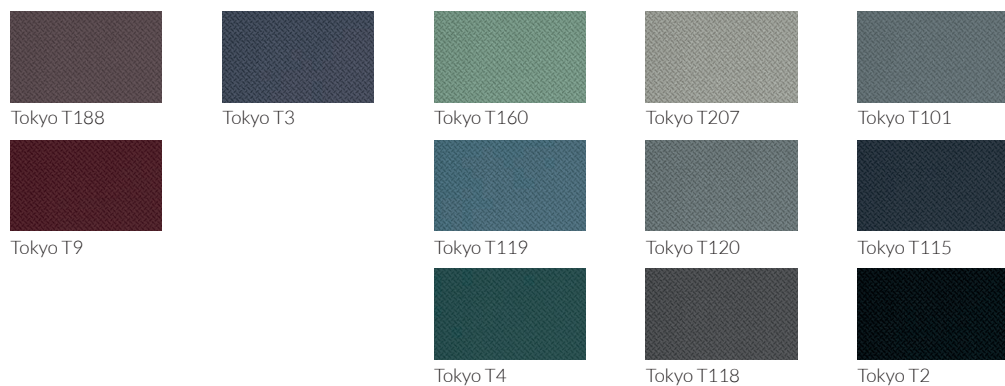
Chopper 001 Purple

## Crown Velvet group B / upholstery / tapicerka

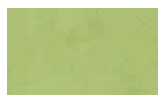


---

## Tokyo group B / upholstery / tapicerka



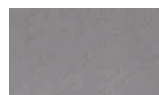
## Twice group B / upholstery / tapicerka



Twice 08 B Pear



Twice 19 B Gold



Twice 01 A Griffin



Twice 01 B Silver



Twice 08 A Apple



Twice 19 A Mandarin



Twice 14 B Mushroom



Twice 24 B Parma



Twice 06 B Teal



Twice 05 B Cobalt



Twice 02 B Pewter



Twice 20 B Canyon



Twice 14 A Walnut



Twice 24 A Aubergine



Twice 06 A Beetle



Twice 05 A Navy



Twice 02 A Onyx



Twice 20 A Paprika



Twice 21 A Chardonay



Twice 21 B Cerise

---

## Diva group C / upholstery / tapicerka



Diva 10 Navy Blue



Diva 14 Violet



Diva 04 Grey

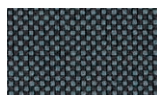


Diva 15 Dark Green

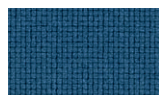
## Go Uni / Go Check / Go Couture group C / upholstery / tapicerka



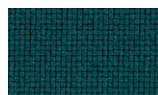
Go Uni 61138



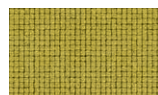
Go Check 60081



Go Uni 66139



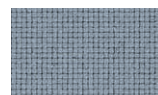
Go Uni 68152



Go Uni 62071



Go Check 64183



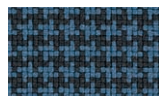
Go Uni 60080



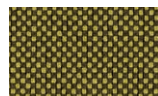
Go Uni 61140



Go Couture 60081



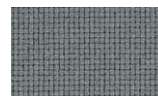
Go Couture 66139



Go Check 62071



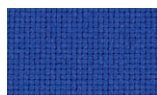
Go Uni 65086



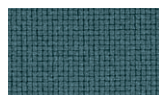
Go Uni 60083



Go Check 61138



Go Uni 66136



Go Uni 67071



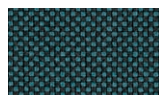
Go Couture 65086



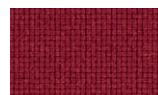
Go Uni 60999



Go Check 66136



Go Check 67071



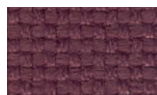
Go Uni 64172

---

## Park group C / upholstery / tapicerka



Park 19



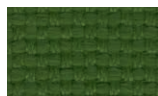
Park 25



Park 28



Park 3



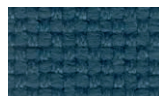
Park 21



Park 24



Park 4



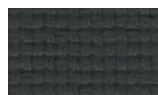
Park 22



Park 10



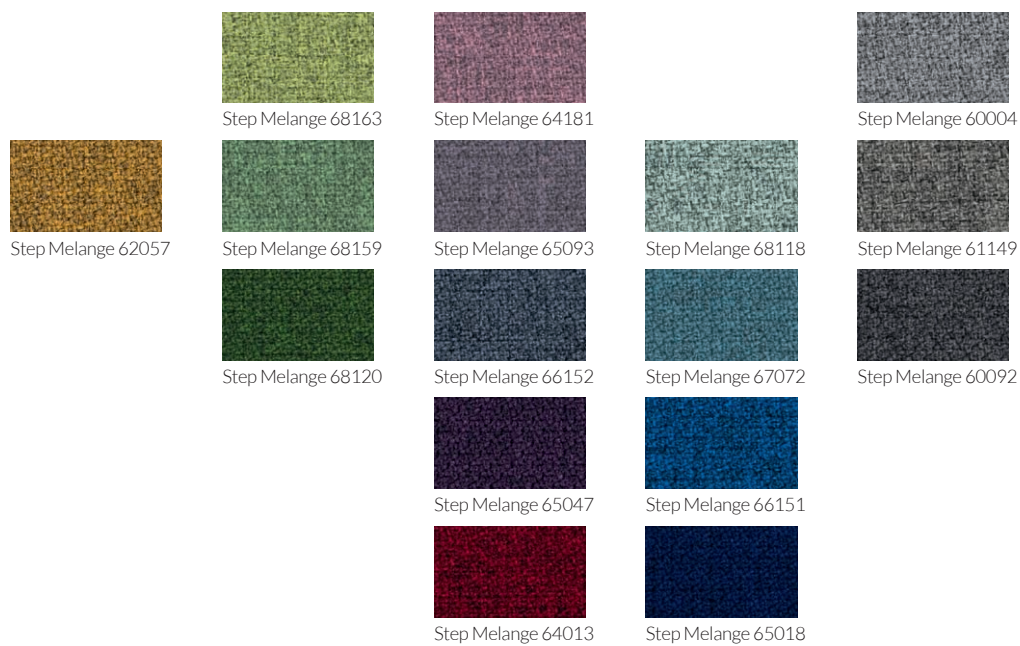
Park 23



Park 12



## Step Melange group C / upholstery / tapicerka



---

## Wool group C / upholstery / tapicerka



## Mood group D / upholstery / tapicerka



---

## Madras / Tornado group L1, L2 / upholstery / tapicerka



Plastic glide / Ślizgacz plastikowy  
Felt glide / Ślizgacz filcowy



GL 01 (pcv)



GL 02 (felt)



(01)  
Natural beech  
Buk naturalny



(02)  
Honey  
Miodowy



(03)  
White washed  
Biały sprany



(29)  
Antique white  
Biały antyczny



(13)  
Yellow stain  
Zółta bejca



(16)  
White  
Biały



(21)  
Light green  
Zielony jasny



(19)  
Light blue  
Niebieski jasny



(17)  
Light grey  
Szary jasny



(26)  
Bleached oak  
Dąb bielony



(25)  
Natural oak  
Dąb naturalny



(35)  
White oak  
Dąb biały



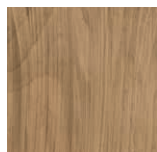
(28)  
Bleached ash  
Jesion bielony



GL 03 (pcv)



GL 04 (felt)



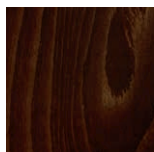
(15)  
Antique oil  
Olej antyczny



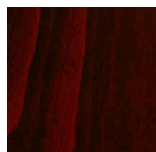
(06)  
Rustical  
Rustykalny



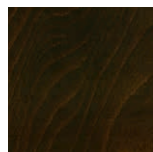
(07)  
Milky walnut  
Orzech mleczny



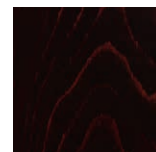
(04)  
Walnut  
Orzech



(05)  
Cognac  
Koniak



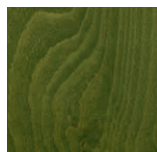
(08)  
Dark walnut  
Orzech ciemny



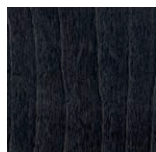
(09)  
Wenge  
Wenge



(14)  
Red stain  
Czerwona bejca



(12)  
Green stain  
Zielona bejca



(11)  
Grey stain  
Szara bejca



(10)  
Black stain  
Czarna bejca



(22)  
Dark green  
Zielony ciemny



(23)  
Burgundy  
Bordowy



(20)  
Dark blue  
Niebieski ciemny



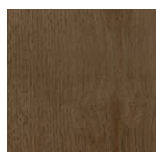
(18)  
Dark grey  
Szary ciemny



(24)  
Black  
Czarny



(37)  
Antique oil oak  
Dąb olej antyczny



(27)  
Milky oak  
Dąb mleczny



(36)  
Black oak  
Dąb czarny

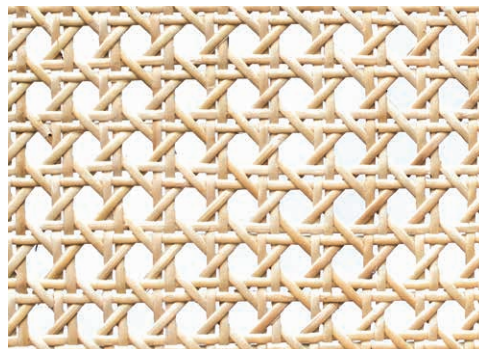
Additional options to Classic collection / Dodatkowe opcje do kolekcji Classic



side braces / łączniki boczne



cane seat hand made / wyplot ręczny



---

Metal footrest protection / Metalowa nakładka na podnózek



silver / srebrny



black / czarny



# { index }



net weight (kg)  
waga netto (kg)



fabric consumption (running meters/pcs) for the width of fabric 1,4 m  
zużycie tkaniny (mb/szt) dla szerokości tkaniny 1,4 m



leather consumption (m²/pcs)  
zużycie skóry (m²/szt)



quantity per carton box, dimensions of the carton box (mm)  
ilość mebli w kartonie, wymiary kartonu (mm)



volume of the carton box (m³)  
objętość kartonu (m³)



stacking (pcs)  
sztaplowanie (szt)



P  
page  
strona

All measurements are given in mm / Wszystkie wymiary podano w mm

## { chairs, armchairs, bar stools, stools }

krzesła, fotele, stołki barowe, taborety



**4 A-4**  
 3,1  
 0,50/3  
 0,90/2  
 690x470x1030  
 0,334  
 -  
**P 129**



**9 B-9**  
 5,6  
 0,55/2  
 0,99/2  
 620x595x960  
 0,354  
 -  
**P 132**



**9 B-9/1**  
 6,1  
 2,15/4  
 3,87/4  
 620x595x960  
 0,354  
 -  
**P 132**



**9 B-9/2**  
 6,2  
 1,60/3  
 2,38/2  
 620x595x960  
 0,354  
 -  
**P 132**



**10 A-10**  
 4,7  
 0,91/2  
 1,64/2  
 590x440x1000  
 0,260  
 -  
**P 132**



**10 B-10**  
 5,8  
 1,76/3  
 3,17/3  
 620x595x960  
 0,354  
 -  
**P 132**



**14 A-14**  
 3  
 0,50/3  
 0,90/3  
 590x440x1000  
 0,260  
 -  
**P 130**



**16 A-16**  
 4  
 0,50/3  
 0,90/3  
 590x440x1000  
 0,260  
 -  
**P 130**



**16 B-16**  
 5,3  
 0,55/2  
 0,99/2  
 620x595x960  
 0,354  
 -  
**P 130**



**18 A-18**  
 4  
 0,50/3  
 0,90/3  
 590x440x1000  
 0,260  
 -  
**P 124**



**18 B-18**  
 ⊕ 3,5  
 ⊗ 0,55/2  
 ⊗ 0,99/2  
 ⊞ 620x595x960  
 ⊞ 0,354  
 ⊞ -  
 P **124**



**18 BST-18**  
 ⊕ 3,8  
 ⊗ 0,50/3  
 ⊗ 0,90/3  
 ⊞ 540x500x1170  
 ⊞ 0,316  
 ⊞ -  
 P **124**



**31 A-31**  
 ⊕ 3  
 ⊗ 0,50/3  
 ⊗ 0,90/3  
 ⊞ 590x440x1000  
 ⊞ 0,260  
 ⊞ -  
 P **129**



**56 A-56**  
 ⊕ 3,3  
 ⊗ 0,50/3  
 ⊗ 0,90/3  
 ⊞ 590x440x1000  
 ⊞ 0,260  
 ⊞ -  
 P **136**



**165 A-165**  
 ⊕ 4,6  
 ⊗ 0,50/3  
 ⊗ 0,90/3  
 ⊞ 600x440x1060  
 ⊞ 0,279  
 ⊞ -  
 P **137**



**165 B-165**  
 ⊕ 4,4  
 ⊗ 0,50/3  
 ⊗ 0,90/3  
 ⊞ 625x565x975  
 ⊞ 0,344  
 ⊞ -  
 P **137**



**165 BST-165**  
 ⊕ 6,1  
 ⊗ 0,50/3  
 ⊗ 0,90/3  
 ⊞ 540x500x1170  
 ⊞ 0,316  
 ⊞ -  
 P **137**



**225 A-225**  
 ⊕ 4,7  
 ⊗ 0,50/3  
 ⊗ 0,90/3  
 ⊞ 590x440x1000  
 ⊞ 0,260  
 ⊞ -  
 P **139**



**225 BST-225**  
 ⊕ 6  
 ⊗ 0,50/3  
 ⊗ 0,90/3  
 ⊞ 540x500x1170  
 ⊞ 0,316  
 ⊞ -  
 P **139**



**302 BST-302/75**  
 ⊕ 4  
 ⊗ 0,50/3  
 ⊗ 0,90/3  
 ⊞ 500x500x770  
 ⊞ 0,192  
 ⊞ -  
 P **140**



**788 A-788 FAN**  
 ⊕ 4,6  
 ⊗ 0,50/3  
 ⊗ 0,90/3  
 ⊞ 600x440x1060  
 ⊞ 0,279  
 ⊞ -  
 P **138**



**788 A-788 VERT**  
 ⊕ 3,6  
 ⊗ 0,50/3  
 ⊗ 0,90/3  
 ⊞ 590x440x1000  
 ⊞ 0,260  
 ⊞ -  
 P **138**



**788 BST-788 FAN**  
 ⊕ 6  
 ⊗ 0,50/3  
 ⊗ 0,90/3  
 ⊞ 540x500x1170  
 ⊞ 0,316  
 ⊞ -  
 P **138**



**811 A-811**  
 ⊕ 4,2  
 ⊗ 3,02/6  
 ⊗ 5,44/6  
 ⊞ 590x440x1000  
 ⊞ 0,260  
 ⊞ -  
 P **126**



**811 A-811/1**  
 ⊕ 5,5  
 ⊗ 0,50/2  
 ⊗ 0,90/2  
 ⊞ 590x440x1000  
 ⊞ 0,260  
 ⊞ -  
 P **126**



**811 B-811**  
 ⊕ 6,1  
 ⊗ 3,02/6  
 ⊗ 5,44/6  
 ⊞ 525x560x950  
 ⊞ 0,279  
 ⊞ -  
 P **127**



**0246 A-0246**  
 ⊕ 3,6  
 ⊗ 0,50/3  
 ⊗ 0,90/3  
 ⊞ 590x440x1000  
 ⊞ 0,260  
 ⊞ -  
 P **136**



**0542 A-0542**  
 ⊕ 5  
 ⊗ 0,50/3  
 ⊗ 0,90/3  
 ⊞ 590x440x1000  
 ⊞ 0,260  
 ⊞ -  
 P **141**



**0542 B-0542**  
 ⊕ 3,9  
 ⊗ 0,50/3  
 ⊗ 0,90/3  
 ⊞ 560x525x950  
 ⊞ 0,279  
 ⊞ -  
 P **141**



**0919 A-0919**  
 ⊕ 3  
 ⊗ 0,50/3  
 ⊗ 0,90/3  
 ⊞ 600x440x1060  
 ⊞ 0,279  
 ⊞ -  
 P **136**



**1110 B-1110**  
 ⊕ 3,5  
 ⊗ 0,50/3  
 ⌘ 0,90/3  
 ⊞ 560x525x950  
 ⊠ 0,279  
 ⊡ -  
 P **141**



**1260 A-1260**  
 ⊕ 4,9  
 ⊗ 0,50/3  
 ⌘ 0,90/3  
 ⊞ 600x440x1060  
 ⊠ 0,279  
 ⊡ -  
 P **133**



**1260 BST-1260**  
 ⊕ 5,2  
 ⊗ 0,50/3  
 ⌘ 0,90/3  
 ⊞ 540x500x1170  
 ⊠ 0,316  
 ⊡ -  
 P **133**



**1406 A-1406**  
 ⊕ 3,8  
 ⊗ 0,50/3  
 ⌘ 0,90/3  
 ⊞ 590x440x1000  
 ⊠ 0,260  
 ⊡ -  
 P **139**



**1406 B-1406**  
 ⊕ 5  
 ⊗ 0,50/3  
 ⌘ 0,90/3  
 ⊞ 560x525x950  
 ⊠ 0,279  
 ⊡ -  
 P **139**



**5910 A-5910**  
 ⊕ 5,5  
 ⊗ 0,48/3  
 ⌘ 0,86/3  
 ⊞ 590x440x1000  
 ⊠ 0,260  
 ⊡ -  
 P **48**



**5910 BST-5910**  
 ⊕ 7,8  
 ⊗ 0,48/3  
 ⌘ 0,86/3  
 ⊞ 540x500x1170  
 ⊠ 0,316  
 ⊡ -  
 P **48**



**8033 B-8033**  
 ⊕ 8,7  
 ⊗ 1,76/3  
 ⌘ 3,17/3  
 ⊞ 620x595x960  
 ⊠ 0,354  
 ⊡ -  
 P **132**



**8139 A-8139**  
 ⊕ 3  
 ⊗ 0,50/3  
 ⌘ 0,90/3  
 ⊞ 590x440x1000  
 ⊠ 0,260  
 ⊡ -  
 P **133**



**8145 A-8145/14**  
 ⊕ 3,3  
 ⊗ 0,50/3  
 ⌘ 0,90/3  
 ⊞ 590x440x1000  
 ⊠ 0,260  
 ⊡ -  
 P **136**



**8223 A-8223**  
 ⊕ 3,8  
 ⊗ 0,50/3  
 ⌘ 0,90/3  
 ⊞ 590x440x1000  
 ⊠ 0,260  
 ⊡ -  
 P **138**



**8526 A-8526**  
 ⊕ 3,9  
 ⊗ 0,5/3  
 ⌘ 0,9/3  
 ⊞ 600x440x1060  
 ⊠ 0,279  
 ⊡ -  
 P **133**



**8810 A-8810/1**  
 ⊕ 4,3  
 ⊗ 0,50/3  
 ⌘ 0,90/3  
 ⊞ 600x440x1060  
 ⊠ 0,279  
 ⊡ -  
 P **134**



**8810 A-8810/2**  
 ⊕ 3,6  
 ⊗ 0,50/3  
 ⌘ 0,90/3  
 ⊞ 590x440x1000  
 ⊠ 0,260  
 ⊡ -  
 P **134**



**8810 BST-8810/1**  
 ⊕ 5,1  
 ⊗ 0,50/3  
 ⌘ 0,90/3  
 ⊞ 540x500x1170  
 ⊠ 0,316  
 ⊡ -  
 P **134**



**8810 BST-8810/2**  
 ⊕ 5,9  
 ⊗ 0,50/3  
 ⌘ 0,90/3  
 ⊞ 540x500x1170  
 ⊠ 0,316  
 ⊡ -  
 P **134**



**9451 B-9451**  
 ⊕ 10,7  
 ⊗ 0,55/2  
 ⌘ 0,99/2  
 ⊞ 600x595x835  
 ⊠ 0,298  
 ⊡ -  
 P **141**



**9607 A-9607**  
 ⊕ 4,5  
 ⊗ 0,50/3  
 ⌘ 0,90/3  
 ⊞ 600x440x1060  
 ⊠ 0,279  
 ⊡ 6  
 P **136**



**9739 BST-9739/61**  
 ⊕ 3,4  
 ⊗ 0,46/3  
 ⌘ 0,83/3  
 ⊞ 400x400x830  
 ⊠ 0,133  
 ⊡ -  
 P **140**



**9739 BST-9739/80**  
 ⊕ 3,6  
 ⊗ 0,46/3  
 ⌘ 0,83/3  
 ⊞ 400x400x830  
 ⊠ 0,133  
 ⊡ -  
 P **140**



9739 T-9739/46

2,4  
 0,46/3  
 0,83/3  
 400x400x500  
 0,08  
 -  
 P **140**



9817 A-9817

4  
 0,50/3  
 0,90/3  
 600x440x1060  
 0,279  
 -  
 P **133**



akka A-0336

5,5  
 0,50/2  
 0,90/2  
 600x440x1060  
 0,279  
 -  
 P **47**



akka BST-0336

6  
 540x500x1170  
 0,316  
 -  
 P **47**



alora A-1412

7  
 4,10/3  
 9,43/3  
 560x525x950  
 0,279  
 -  
 P **57**



alora BST-1412

7,2  
 3,36/3  
 2,57/1  
 540x500x1170  
 0,316  
 -  
 P **57**



amada A-1413

7,9  
 1,75/2  
 4,02/2  
 560x525x950  
 0,279  
 -  
 P **57**



amada BST-1413

7,5  
 0,53/1  
 1,21/1  
 540x500x1170  
 0,316  
 -  
 P **57**



apollo A-1228

6  
 2,10/3  
 3,78/3  
 690x470x1030  
 0,334  
 -  
 P **51**



apollo B-1228

10,8  
 7,14/4  
 3,21/1  
 620x595x960  
 0,354  
 -  
 P **51**



arc B-0810

14,9  
 4,98/2  
 5,72/1  
 620x595x960  
 0,354  
 -  
 P **95**



arch A-1801

8  
 1,05/2  
 2,45/2  
 560x525x950  
 0,279  
 -  
 P **13**



arch B-1801

11,5  
 1,65/2  
 3,85/2  
 620x595x960  
 0,354  
 -  
 P **13**



arcos A-1403

8,8  
 0,65/2  
 1,17/2  
 690x470x1030  
 0,334  
 -  
 P **39**



arcos B-1403

7,7  
 620x595x960  
 0,354  
 -  
 P **39**



arcos B-1403

8,5  
 0,65/2  
 1,17/2  
 620x595x960  
 0,354  
 -  
 P **39**



arcos BST-1403

8,8  
 0,55/2  
 0,99/2  
 540x500x1170  
 0,316  
 -  
 P **39**



avola A-1411

7,1  
 0,56/2  
 1,02/2  
 560x525x950  
 0,279  
 -  
 P **55**



avola BST-1411

7  
 0,52/2  
 0,94/2  
 540x500x1170  
 0,316  
 -  
 P **55**









base A-0707

6,9  
 0,50/2  
 0,90/2  
 690x470x1030  
 0,334  
 6  
 P **46**











**base** BST-0707

 6,4  
 0,50/2  
 0,90/2  
 540x500x1170  
 0,316  
 -  
**P 46**









**berg** B-0411

 5,8  
 0,82/2  
 1,48/2  
 600x595x835  
 0,298  
 -  
**P 94**









**bistro 1** A-9907/2

 6,2  
 0,52/2  
 0,94/2  
 690x470x1030  
 0,334  
 -  
**P 97**


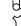






**bistro 1** BST-9907/2

 8,6  
 0,52/2  
 0,94/2  
 540x500x1170  
 0,316  
 -  
**P 97**









**bistro 2** A-9907

 6,5  
 0,52/2  
 0,94/2  
 690x470x1030  
 0,334  
 -  
**P 97**









**bistro 2** BST-9907

 8,8  
 0,52/2  
 0,94/2  
 540x500x1170  
 0,316  
 -  
**P 97**









**capitán** B-9437

 11,2  
 0,76/2  
 1,37/2  
 600x595x835  
 0,298  
 -  
**P 106**









**chili** A-1302

 6,2  
 0,52/2  
 0,94/2  
 690x470x1030  
 0,334  
 4  
**P 101**









**class** A-0955

 5,5  
 0,50/2  
 0,90/2  
 690x470x1030  
 0,334  
 4  
**P 40**









**class** B-0955

 5,4  
 0,50/2  
 0,90/2  
 620x595x960  
 0,354  
 -  
**P 40**









**class** BST-0955

 6,9  
 0,46/3  
 0,83/3  
 540x500x1170  
 0,316  
 -  
**P 40**









**cleo** A-1601

 6  
 0,50/2  
 0,90/2  
 590x440x1000  
 0,260  
 -  
**P 33**









**cleo** A-1602

 5,1  
 -  
 -  
 590x440x1000  
 0,260  
 -  
**P 33**









**cleo** A-1603

 5,6  
 2,56/3  
 5,89/3  
 590x440x1000  
 0,260  
 -  
**P 34**









**cleo** A-1604

 5,9  
 1,76/2  
 4,05/2  
 590x440x1000  
 0,260  
 -  
**P 34**









**cleo** A-1605

 6,7  
 2,64/6  
 6,07/6  
 590x440x1000  
 0,260  
 -  
**P 34**









**cleo** BST-1603

 7,2  
 1,80/3  
 4,14/3  
 560x525x950  
 0,279  
 -  
**P 34**




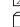




**cleo** BST-1605

 7,6  
 1,80/6  
 4,14/6  
 560x525x950  
 0,279  
 -  
**P 34**









**comfy** A-423

 6,4  
 1,89/3  
 3,40/3  
 690x470x1030  
 0,334  
 -  
**P 96**



**comfy** BST-423

 8,4  
 0,86/2  
 1,55/2  
 540x500x1170  
 0,316  
 -  
**P 96**



**comfy** BST-423/2  
 Ⓞ 7,5  
 Ⓢ 2,05/6  
 Ⓣ 2,35/3  
 Ⓤ 490x450x960  
 Ⓥ 0,211  
 Ⓦ -  
 Ⓧ P **96**



**conran** BST-0461  
 Ⓞ 8,2  
 Ⓢ 0,74/1  
 Ⓣ 1,70/1  
 Ⓤ 400x400x830  
 Ⓥ 0,133  
 Ⓦ -  
 Ⓧ P **61**



**cortina** A-1701  
 Ⓞ 8,2  
 Ⓢ -  
 Ⓣ -  
 Ⓤ 690x470x1030  
 Ⓥ 0,334  
 Ⓦ -  
 Ⓧ P **66**



**cosy** B-1404  
 Ⓞ 8,2  
 Ⓢ -  
 Ⓣ -  
 Ⓤ 620x595x960  
 Ⓥ 0,354  
 Ⓦ -  
 Ⓧ P **50**



**cosy** B-1404  
 Ⓞ 8,4  
 Ⓢ 1,72/2  
 Ⓣ 3,95/2  
 Ⓤ 620x595x960  
 Ⓥ 0,354  
 Ⓦ -  
 Ⓧ P **50**



**country** A-9008  
 Ⓞ 5,9  
 Ⓢ -  
 Ⓣ -  
 Ⓤ 690x470x1030  
 Ⓥ 0,334  
 Ⓦ -  
 Ⓧ P **102**



**cube** B-1523  
 Ⓞ 8,2  
 Ⓢ 1,50/1  
 Ⓣ 3,45/1  
 Ⓤ 600x595x835  
 Ⓥ 0,298  
 Ⓦ -  
 Ⓧ P **95**



**diana** A-0253  
 Ⓞ 6,4  
 Ⓢ 1,00/3  
 Ⓣ 1,80/3  
 Ⓤ 690x470x1030  
 Ⓥ 0,334  
 Ⓦ -  
 Ⓧ P **93**



**diana** B-0253  
 Ⓞ 8,4  
 Ⓢ 1,70/3  
 Ⓣ 3,06/3  
 Ⓤ 620x595x960  
 Ⓥ 0,354  
 Ⓦ -  
 Ⓧ P **93**



**diana** BST-0253  
 Ⓞ 7,5  
 Ⓢ 1,0/3  
 Ⓣ 1,80/3  
 Ⓤ 550x500x1300  
 Ⓥ 0,357  
 Ⓦ -  
 Ⓧ P **93**



**edgy** A-1107  
 Ⓞ 5,9  
 Ⓢ 1,42/3  
 Ⓣ 3,27/3  
 Ⓤ 690x470x1030  
 Ⓥ 0,334  
 Ⓦ -  
 Ⓧ P **98**



**edgy** BST-1107  
 Ⓞ 8,2  
 Ⓢ 1,42/3  
 Ⓣ 3,26/3  
 Ⓤ 540x500x1170  
 Ⓥ 0,316  
 Ⓦ -  
 Ⓧ P **98**



**egon** B-9744  
 Ⓞ 10,6  
 Ⓢ 1,60/1  
 Ⓣ 2,88/1  
 Ⓤ 700x610x840  
 Ⓥ 0,359  
 Ⓦ -  
 Ⓧ P **94**



**elegant** B-9633  
 Ⓞ 7,8  
 Ⓢ 2,94/6  
 Ⓣ 2,65/3  
 Ⓤ 600x595x835  
 Ⓥ 0,298  
 Ⓦ -  
 Ⓧ P **94**



**fame** A-0620  
 Ⓞ 5,5  
 Ⓢ 0,56/2  
 Ⓣ 1,00/2  
 Ⓤ 690x470x1030  
 Ⓥ 0,334  
 Ⓦ -  
 Ⓧ P **43**



**fame** B-0620  
 Ⓞ 6,2  
 Ⓢ 0,56/2  
 Ⓣ 1,00/2  
 Ⓤ 600x595x835  
 Ⓥ 0,298  
 Ⓦ -  
 Ⓧ P **43**



**finn** A-1609  
 Ⓞ 4,2  
 Ⓢ 0,50/2  
 Ⓣ 0,90/2  
 Ⓤ 590x440x1000  
 Ⓥ 0,260  
 Ⓦ -  
 Ⓧ P **37**



**finn** BST-1609/61  
 Ⓞ 3,7  
 Ⓢ 0,46/3  
 Ⓣ 0,83/3  
 Ⓤ 480x480x650  
 Ⓥ 0,149  
 Ⓦ -  
 Ⓧ P **37**



**finn** BST-1609/75  
 Ⓞ 3,3  
 Ⓢ 0,46/3  
 Ⓣ 0,83/3  
 Ⓤ 490x450x960  
 Ⓥ 0,211  
 Ⓦ -  
 Ⓧ P **37**



**finn** T-1609/33  
 Ⓞ 1,1  
 Ⓢ 0,41/3  
 Ⓣ 0,74/3  
 Ⓤ 420x330x720  
 Ⓥ 0,099  
 Ⓦ -  
 Ⓧ P **37**



**finn** T-1609/46

Ⓞ 2,2  
 Ⓢ 0,46/3  
 Ⓣ 0,83/3  
 Ⓤ 400x400x500  
 Ⓥ 0,08  
 Ⓦ -  
 Ⓧ P **37**



**fjord** A-1319

Ⓞ 7,2  
 Ⓢ 0,56/2  
 Ⓣ 1,02/2  
 Ⓤ 750x510x1050  
 Ⓥ 0,402  
 Ⓦ 2  
 Ⓧ P **44**



**fjord** B-1319

Ⓞ 7,9  
 Ⓢ 0,56/2  
 Ⓣ 1,00/2  
 Ⓤ 620x595x960  
 Ⓥ 0,354  
 Ⓦ 2  
 Ⓧ P **44**



**fjord** BST-1319

Ⓞ 8,4  
 Ⓢ 0,52/2  
 Ⓣ 0,94/2  
 Ⓤ 540x500x1170  
 Ⓥ 0,316  
 Ⓦ -  
 Ⓧ P **44**



**flat** A-0811

Ⓞ 6,5  
 Ⓢ 1,42/3  
 Ⓣ 3,27/3  
 Ⓤ 750x510x1050  
 Ⓥ 0,402  
 Ⓦ -  
 Ⓧ P **98**



**flat** BST-0811

Ⓞ 8,5  
 Ⓢ 1,42/3  
 Ⓣ 3,26/3  
 Ⓤ 550x500x1300  
 Ⓥ 0,357  
 Ⓦ -  
 Ⓧ P **98**



**garten** 4 GA-4

Ⓞ 3,2  
 Ⓢ -  
 Ⓣ -  
 Ⓤ 690x470x1030  
 Ⓥ 0,334  
 Ⓦ -  
 Ⓧ P **147**



**ginko** A-1315

Ⓞ 4,3  
 Ⓢ -  
 Ⓣ -  
 Ⓤ 590x440x1000  
 Ⓥ 0,260  
 Ⓦ -  
 Ⓧ P **62**



**ginko** BST-1315

Ⓞ 5,5  
 Ⓢ -  
 Ⓣ -  
 Ⓤ 500x450x1150  
 Ⓥ 0,259  
 Ⓦ -  
 Ⓧ P **62**



**goodluck** A-0935

Ⓞ 5,1  
 Ⓢ -  
 Ⓣ -  
 Ⓤ 690x470x1030  
 Ⓥ 0,334  
 Ⓦ -  
 Ⓧ P **65**



**harry** A-0139

Ⓞ 6,8  
 Ⓢ 2,52/3  
 Ⓣ 4,54/3  
 Ⓤ 690x470x1030  
 Ⓥ 0,334  
 Ⓦ -  
 Ⓧ P **42**



**harry** B-0139

Ⓞ 7,7  
 Ⓢ 2,52/3  
 Ⓣ 4,54/3  
 Ⓤ 560x525x950  
 Ⓥ 0,279  
 Ⓦ -  
 Ⓧ P **42**



**harry** BST-0139

Ⓞ 7,6  
 Ⓢ 2,30/3  
 Ⓣ 4,14/3  
 Ⓤ 540x500x1170  
 Ⓥ 0,316  
 Ⓦ -  
 Ⓧ P **42**



**hips** A-1802

Ⓞ 5,8  
 Ⓢ -  
 Ⓣ -  
 Ⓤ 690x470x1030  
 Ⓥ 0,334  
 Ⓦ -  
 Ⓧ P **15**



**hips** A-1802

Ⓞ 6  
 Ⓢ 0,45/2  
 Ⓣ 0,81/2  
 Ⓤ 690x470x1030  
 Ⓥ 0,334  
 Ⓦ -  
 Ⓧ P **15**



**hips** A-1802/1

Ⓞ 6,2  
 Ⓢ 0,96/1  
 Ⓣ 2,20/1  
 Ⓤ 690x470x1030  
 Ⓥ 0,334  
 Ⓦ -  
 Ⓧ P **15**



**hoga** A-1320

Ⓞ 5,3  
 Ⓢ 0,52/2  
 Ⓣ 0,94/2  
 Ⓤ 600x440x1060  
 Ⓥ 0,279  
 Ⓦ 4  
 Ⓧ P **40**



**hoga** B-1320

Ⓞ 6,8  
 Ⓢ 0,52/2  
 Ⓣ 0,94/2  
 Ⓤ 560x525x950  
 Ⓥ 0,279  
 Ⓦ 3  
 Ⓧ P **40**



**hoga** BST-1320

Ⓞ 6,7  
 Ⓢ 0,53/2  
 Ⓣ 0,95/2  
 Ⓤ 540x500x1170  
 Ⓥ 0,316  
 Ⓦ -  
 Ⓧ P **40**



**joy** A-9731

Ⓞ 5,8  
 Ⓢ 0,50/2  
 Ⓣ 0,90/2  
 Ⓤ 690x470x1030  
 Ⓥ 0,334  
 Ⓦ -  
 Ⓧ P **64**



**joy** A-9731/12  
 ⊕ 5,8  
 ⊗ 0,50/2  
 ⊗ 0,90/2  
 ⊗ 690x470x1030  
 ⊗ 0,334  
 ⊕ -  
 P **64**



**joy** B-9731/12  
 ⊕ 6  
 ⊗ 0,50/2  
 ⊗ 0,90/2  
 ⊗ 560x525x950  
 ⊗ 0,279  
 ⊕ -  
 P **64**



**joy** BST-9731/12  
 ⊕ 6,4  
 ⊗ 0,50/2  
 ⊗ 0,90/2  
 ⊗ 500x450x1150  
 ⊗ 0,259  
 ⊕ -  
 P **64**



**kos** A-1621  
 ⊕ 7,3  
 ⊗ 1,66/2  
 ⊗ 3,82/2  
 ⊗ 690x470x1030  
 ⊗ 0,334  
 ⊕ -  
 P **29**



**kos** B-1621  
 ⊕ 8  
 ⊗ 1,66/2  
 ⊗ 3,82/2  
 ⊗ 600x595x835  
 ⊗ 0,298  
 ⊕ -  
 P **29**



**laser** A-1511  
 ⊕ 5,4  
 ⊗ -  
 ⊗ -  
 ⊗ 590x440x1000  
 ⊗ 0,260  
 ⊕ -  
 P **66**



**lava** A-1807  
 ⊕ 6,5  
 ⊗ 1,22/1  
 ⊗ 2,80/1  
 ⊗ 750x510x1050  
 ⊗ 0,402  
 ⊕ -  
 P **20**



**lava** B-1807  
 ⊕ 7,6  
 ⊗ 1,22/1  
 ⊗ 2,80/1  
 ⊗ 620x595x960  
 ⊗ 0,354  
 ⊕ -  
 P **20**



**lennox** A-1405  
 ⊕ 7,1  
 ⊗ 0,55/2  
 ⊗ 0,99/2  
 ⊗ 690x470x1030  
 ⊗ 0,334  
 ⊕ -  
 P **38**



**lennox** B-1405  
 ⊕ 7,8  
 ⊗ 0,55/2  
 ⊗ 0,99/2  
 ⊗ 560x525x950  
 ⊗ 0,279  
 ⊕ -  
 P **38**



**ludwig** A-9702/1  
 ⊕ 6,9  
 ⊗ 1,80/3  
 ⊗ 3,24/3  
 ⊗ 750x510x1050  
 ⊗ 0,402  
 ⊕ -  
 P **99**



**ludwig** B-9702/1  
 ⊕ 8,3  
 ⊗ 2,26/3  
 ⊗ 4,07/3  
 ⊗ 590x580x1100  
 ⊗ 0,376  
 ⊕ -  
 P **99**



**ludwig** BST-9702/1  
 ⊕ 7,9  
 ⊗ 1,77/3  
 ⊗ 3,19/3  
 ⊗ 550x500x1300  
 ⊗ 0,357  
 ⊕ -  
 P **99**



**malibu** A-1506  
 ⊕ 7,7  
 ⊗ 0,57/2  
 ⊗ 1,02/2  
 ⊗ 750x510x1050  
 ⊗ 0,402  
 ⊕ 6  
 P **30**



**malibu** A-1506  
 ⊕ 6,5  
 ⊗ -  
 ⊗ -  
 ⊗ 750x510x1050  
 ⊗ 0,402  
 ⊕ 6  
 P **30**



**nod** A-1620  
 ⊕ 6,8  
 ⊗ -  
 ⊗ -  
 ⊗ 690x470x1030  
 ⊗ 0,334  
 ⊕ -  
 P **24**



**nod** A-1620/1  
 ⊕ 7,8  
 ⊗ 1,01/2  
 ⊗ 2,32/2  
 ⊗ 690x470x1030  
 ⊗ 0,334  
 ⊕ -  
 P **24**



**nod** BST-1620  
 ⊕ 6,5  
 ⊗ 0,61/3  
 ⊗ 1,20/3  
 ⊗ 490x450x820  
 ⊗ 0,181  
 ⊕ -  
 P **27**



**nod** BST-1620/2  
 ⊕ 8,7  
 ⊗ 0,48/3  
 ⊗ 0,86/3  
 ⊗ 540x500x1170  
 ⊗ 0,316  
 ⊕ -  
 P **27**



**nopp** A-1803  
 ⊕ 4  
 ⊗ 0,68/2  
 ⊗ 1,23/2  
 ⊗ 690x470x1030  
 ⊗ 0,334  
 ⊕ -  
 P **18**



**nopp B-1803/1**  
 ⑤ 5,6  
 ⑥ 0,67/2  
 ⑦ 1,21/2  
 ⑧ 560x525x950  
 ⑨ 0,279  
 ⑩ -  
 P **18**



**nopp BST-1803**  
 ⑤ 5,5  
 ⑥ 0,44/2  
 ⑦ 0,80/2  
 ⑧ 540x500x1170  
 ⑨ 0,316  
 ⑩ -  
 P **18**



**novo A-9610**  
 ⑤ 5,8  
 ⑥ 0,50/3  
 ⑦ 0,90/3  
 ⑧ 600x440x1060  
 ⑨ 0,279  
 ⑩ -  
 P **105**



**novo A-9610/1**  
 ⑤ 6,3  
 ⑥ 0,84/2  
 ⑦ 1,51/2  
 ⑧ 600x440x1060  
 ⑨ 0,279  
 ⑩ -  
 P **105**



**novo B-9610/1**  
 ⑤ 8  
 ⑥ 0,86/2  
 ⑦ 1,55/2  
 ⑧ 560x525x950  
 ⑨ 0,279  
 ⑩ -  
 P **105**



**novo BST-9610/1**  
 ⑤ 6,8  
 ⑥ 0,86/2  
 ⑦ 1,55/2  
 ⑧ 540x500x1170  
 ⑨ 0,316  
 ⑩ -  
 P **105**



**oval A-0951**  
 ⑤ 5,9  
 ⑥ 2,14/3  
 ⑦ 3,85/3  
 ⑧ 750x510x1050  
 ⑨ 0,402  
 ⑩ -  
 P **99**



**pollo B-1224**  
 ⑤ 8,1  
 ⑥ 4,80/6  
 ⑦ 3,77/2  
 ⑧ 620x595x960  
 ⑨ 0,354  
 ⑩ 2  
 P **51**



**pub A-0014**  
 ⑤ 9,1  
 ⑥ -  
 ⑦ -  
 ⑧ 690x470x1030  
 ⑨ 0,334  
 ⑩ -  
 P **101**



**pub BST-0014**  
 ⑤ 9,8  
 ⑥ -  
 ⑦ -  
 ⑧ 540x500x1170  
 ⑨ 0,316  
 ⑩ -  
 P **101**



**puppy A-9349**  
 ⑤ 4,1  
 ⑥ -  
 ⑦ -  
 ⑧ 590x440x1000  
 ⑨ 0,260  
 ⑩ 6  
 P **66**



**rar B-0022/1**  
 ⑤ 7,6  
 ⑥ 1,50/3  
 ⑦ 2,70/3  
 ⑧ 600x595x835  
 ⑨ 0,298  
 ⑩ -  
 P **94**



**ray A-1209**  
 ⑤ 7,7  
 ⑥ 1,64/2  
 ⑦ 2,95/2  
 ⑧ 690x470x1030  
 ⑨ 0,334  
 ⑩ -  
 P **63**



**ray B-1209**  
 ⑤ 8,6  
 ⑥ 1,64/2  
 ⑦ 2,95/2  
 ⑧ 560x525x950  
 ⑨ 0,279  
 ⑩ -  
 P **63**



**ray BST-1209**  
 ⑤ 6,6  
 ⑥ 0,61/1  
 ⑦ 1,10/1  
 ⑧ 490x450x800  
 ⑨ 0,176  
 ⑩ -  
 P **63**



**ray BST-1209/1**  
 ⑤ 7,9  
 ⑥ 2,08/6  
 ⑦ 2,49/4  
 ⑧ 490x450x960  
 ⑨ 0,211  
 ⑩ -  
 P **63**



**reno A-0133/1**  
 ⑤ 7,4  
 ⑥ 3,05/6  
 ⑦ 5,49/6  
 ⑧ 750x510x1050  
 ⑨ 0,402  
 ⑩ -  
 P **100**



**reno B-0133/1**  
 ⑤ 8,5  
 ⑥ 3,05/6  
 ⑦ 5,49/6  
 ⑧ 620x595x960  
 ⑨ 0,354  
 ⑩ -  
 P **100**



**rino B-1622**  
 ⑤ 11,5  
 ⑥ 1,65/2  
 ⑦ 3,80/2  
 ⑧ 700x610x840  
 ⑨ 0,359  
 ⑩ -  
 P **20**



**roll BST-9336**  
 ⑤ 4,3  
 ⑥ 0,50/3  
 ⑦ 0,90/3  
 ⑧ 400x400x830  
 ⑨ 0,133  
 ⑩ -  
 P **102**



**roll T-9336**  
 ⊕ 3,3  
 ⊗ 0,43/3  
 ⊗ 0,77/3  
 ⊞ 400x400x830  
 ⊞ 0,133  
 ⊞ -  
 P **102**



**ronda A-1702**  
 ⊕ 4,2  
 ⊗ -  
 ⊗ -  
 ⊞ 690x470x1030  
 ⊞ 0,334  
 ⊞ -  
 P **30**



**royal A-9866/3**  
 ⊕ 6,5  
 ⊗ 0,56/2  
 ⊗ 1,02/2  
 ⊞ 690x470x1030  
 ⊞ 0,334  
 ⊞ -  
 P **100**



**sara A-1607**  
 ⊕ 5,2  
 ⊗ 0,57/1  
 ⊗ 1,03/1  
 ⊞ 690x470x1030  
 ⊞ 0,334  
 ⊞ -  
 P **35**



**simple A-9456**  
 ⊕ 5,9  
 ⊗ 0,50/2  
 ⊗ 0,90/2  
 ⊞ 600x440x1060  
 ⊞ 0,279  
 ⊞ -  
 P **96**



**simple BST-9456**  
 ⊕ 9,4  
 ⊗ 0,48/2  
 ⊗ 0,86/2  
 ⊞ 500x450x1150  
 ⊞ 0,259  
 ⊞ -  
 P **96**



**skip B-1524**  
 ⊕ 8,7  
 ⊗ 1,50/1  
 ⊗ 3,45/1  
 ⊞ 600x595x835  
 ⊞ 0,298  
 ⊞ -  
 P **95**



**solid A-9449**  
 ⊕ 5,2  
 ⊗ 0,50/2  
 ⊗ 0,90/2  
 ⊞ 690x470x1030  
 ⊞ 0,334  
 ⊞ -  
 P **54**



**solid A-9449/1**  
 ⊕ 6,4  
 ⊗ 0,74/2  
 ⊗ 1,33/2  
 ⊞ 690x470x1030  
 ⊞ 0,334  
 ⊞ -  
 P **54**



**solid B-9449**  
 ⊕ 5,6  
 ⊗ -  
 ⊗ -  
 ⊞ 560x525x950  
 ⊞ 0,279  
 ⊞ -  
 P **54**



**solid B-9449**  
 ⊕ 6,6  
 ⊗ 0,50/2  
 ⊗ 0,90/2  
 ⊞ 560x525x950  
 ⊞ 0,279  
 ⊞ -  
 P **54**



**solid B-9449/1**  
 ⊕ 7,1  
 ⊗ 0,74/2  
 ⊗ 1,33/2  
 ⊞ 560x525x950  
 ⊞ 0,279  
 ⊞ -  
 P **54**



**solid BST-9449**  
 ⊕ 6,6  
 ⊗ 0,50/3  
 ⊗ 0,90/3  
 ⊞ 540x500x1170  
 ⊞ 0,316  
 ⊞ -  
 P **54**



**soul A-0728**  
 ⊕ 5,8  
 ⊗ 0,52/2  
 ⊗ 0,94/2  
 ⊞ 690x470x1030  
 ⊞ 0,334  
 ⊞ -  
 P **101**



**square BST-0515/1**  
 ⊕ 6,2  
 ⊗ 2,08/6  
 ⊗ 2,39/3  
 ⊞ 400x400x830  
 ⊞ 0,133  
 ⊞ -  
 P **61**



**stick A-0537**  
 ⊕ 5,9  
 ⊗ 0,46/3  
 ⊗ 0,83/3  
 ⊞ 690x470x1030  
 ⊞ 0,334  
 ⊞ -  
 P **48**



**stream A-0448**  
 ⊕ 5,9  
 ⊗ 0,50/2  
 ⊗ 0,90/2  
 ⊞ 590x440x1000  
 ⊞ 0,260  
 ⊞ -  
 P **46**



**stream A-0448/N**  
 ⊕ 7,3  
 ⊗ 0,50/2  
 ⊗ 0,90/2  
 ⊞ 600x440x1060  
 ⊞ 0,279  
 ⊞ 4  
 P **46**



**stream BST-0448**  
 ⊕ 7,1  
 ⊗ 2,44/9  
 ⊗ 2,44/5  
 ⊞ 540x500x1170  
 ⊞ 0,316  
 ⊞ -  
 P **46**



**tari A-0501**  
 ⊕ 3,6  
 ⊗ -  
 ⊗ -  
 ⊞ 940x450x55  
 ⊞ 0,023  
 ⊞ -  
 P **65**



**tari** A-0501/4  
 ⊕ 2,5  
 ⊗ -  
 ⊗ -  
 ⊗ 640x440x230  
 ⊗ 0,065  
 ⊕ -  
 ⊕ **65**



**tari** A-0501/8  
 ⊕ 3,8  
 ⊗ -  
 ⊗ -  
 ⊗ 640x440x230  
 ⊗ 0,065  
 ⊕ -  
 ⊕ **65**



**teba** A-1606  
 ⊕ 5,8  
 ⊗ 1,48/2  
 ⊗ 3,40/2  
 ⊗ 690x470x1030  
 ⊗ 0,334  
 ⊕ -  
 ⊕ **35**



**torino** A-1610  
 ⊕ 6,1  
 ⊗ 1,75/2  
 ⊗ 4,02/2  
 ⊗ 620x510x970  
 ⊗ 0,306  
 ⊕ -  
 ⊕ **35**



**tulip 1** A-9608  
 ⊕ 6  
 ⊗ 2,46/3  
 ⊗ 4,43/3  
 ⊗ 690x470x1030  
 ⊗ 0,334  
 ⊕ -  
 ⊕ **52**



**tulip 1** B-9608  
 ⊕ 7  
 ⊗ 2,46/3  
 ⊗ 4,43/3  
 ⊗ 600x595x835  
 ⊗ 0,298  
 ⊕ -  
 ⊕ **52**



**tulip 1** BST-9608  
 ⊕ 8,1  
 ⊗ 2,46/3  
 ⊗ 4,43/3  
 ⊗ 540x500x1170  
 ⊗ 0,316  
 ⊕ -  
 ⊕ **52**



**tulip 2** A-9608/1  
 ⊕ 6,4  
 ⊗ 2,70/3  
 ⊗ 6,21/3  
 ⊗ 690x470x1030  
 ⊗ 0,334  
 ⊕ -  
 ⊕ **53**



**tulip 2** B-9608/1  
 ⊕ 7,4  
 ⊗ 2,70/3  
 ⊗ 6,21/3  
 ⊗ 600x595x835  
 ⊗ 0,298  
 ⊕ -  
 ⊕ **53**



**tulip 2** BST-9608/1  
 ⊕ 8,4  
 ⊗ 2,70/3  
 ⊗ 6,21/3  
 ⊗ 540x500x1170  
 ⊗ 0,316  
 ⊕ -  
 ⊕ **53**



**tulip 3** A-0031  
 ⊕ 5,2  
 ⊗ 1,10/3  
 ⊗ 1,98/3  
 ⊗ 690x470x1030  
 ⊗ 0,334  
 ⊕ -  
 ⊕ **53**



**tulip 3** B-0031  
 ⊕ 7,1  
 ⊗ 1,10/3  
 ⊗ 1,98/3  
 ⊗ 560x525x950  
 ⊗ 0,279  
 ⊕ -  
 ⊕ **53**



**tulip 3** BST-0031  
 ⊕ 8  
 ⊗ 1,10/3  
 ⊗ 1,98/3  
 ⊗ 540x500x1170  
 ⊗ 0,316  
 ⊕ -  
 ⊕ **53**



**twirl** A-9204/102  
 ⊕ 5,5  
 ⊗ 0,50/3  
 ⊗ 0,90/3  
 ⊗ 590x440x1000  
 ⊗ 0,260  
 ⊕ -  
 ⊕ **101**



**ufo** BST-9972/61  
 ⊕ 6,3  
 ⊗ 1,38/6  
 ⊗ 3,17/6  
 ⊗ 400x400x830  
 ⊗ 0,133  
 ⊕ -  
 ⊕ **60**



**ufo** BST-9972/75  
 ⊕ 6,4  
 ⊗ 1,38/6  
 ⊗ 3,17/6  
 ⊗ 400x400x830  
 ⊗ 0,133  
 ⊕ -  
 ⊕ **60**



**ufo** T-9972/46  
 ⊕ 4,9  
 ⊗ 1,38/6  
 ⊗ 3,17/6  
 ⊗ 400x400x830  
 ⊗ 0,133  
 ⊕ -  
 ⊕ **60**



**uma** A-1505  
 ⊕ 6,5  
 ⊗ 1,20/3  
 ⊗ 2,16/3  
 ⊗ 600x440x1060  
 ⊗ 0,279  
 ⊕ -  
 ⊕ **44**



**wand** A-1102/1  
 ⊕ 7,3  
 ⊗ 0,50/2  
 ⊗ 0,90/2  
 ⊗ 750x510x1050  
 ⊗ 0,402  
 ⊕ -  
 ⊕ **49**



**wand** B-1102/1  
 ⊕ 7,3  
 ⊗ 0,52/2  
 ⊗ 0,94/2  
 ⊗ 560x525x950  
 ⊗ 0,279  
 ⊕ -  
 ⊕ **49**



wand BST-1102/1

⊕	6,7
⊗	0,50/2
⊗	0,90/2
⊗	540x500x1170
⊗	0,316
⊗	-
P	<b>49</b>



wave BST-0506

⊕	4,9
⊗	-
⊗	-
⊗	400x400x830
⊗	0,133
⊗	-
P	<b>61</b>



windsor A-372

⊕	5,3
⊗	-
⊗	-
⊗	690x470x1030
⊗	0,334
⊗	-
P	<b>102</b>



windsor B-372

⊕	7,8
⊗	-
⊗	-
⊗	620x595x960
⊗	0,354
⊗	-
P	<b>102</b>

# { rockers }

bujaki



9816 BJ-9816

⊕	10,1
⊗	1,78/2
⊗	4,09/2
⊗	1050x570x1000
⊗	0,598
⊗	-
P	<b>143</b>



9816 BJ-9816

⊕	7,5
⊗	-
⊗	-
⊗	1050x570x1000
⊗	0,598
⊗	-
P	<b>143</b>



preria BJ-9340

⊕	14,1
⊗	0,64/2
⊗	1,15/2
⊗	840x645x1150
⊗	0,623
⊗	-
P	<b>106</b>



venus BJ-0321

⊕	10,5
⊗	1,80/1
⊗	4,14/1
⊗	1050x570x1000
⊗	0,598
⊗	-
P	<b>67</b>



wand BJ-1102/1

⊕	9,4
⊗	0,52/2
⊗	0,94/2
⊗	750x660x940
⊗	0,465
⊗	-
P	<b>49</b>



# { sofas, lounge chairs }

sofy, fotele



**6653 S-6653/16**  
 Ⓢ 10,3  
 Ⓜ 0,55/1  
 Ⓝ 1,26/1  
 Ⓞ 1200x560x900  
 Ⓟ 0,605  
 Ⓠ -  
 P **146**



**6653 S-6653/L**  
 Ⓢ 9,6  
 Ⓜ 0,55/1  
 Ⓝ 1,26/1  
 Ⓞ 1200x560x900  
 Ⓟ 0,605  
 Ⓠ -  
 P **146**



**egon S-9744**  
 Ⓢ 17  
 Ⓜ 3,06/2  
 Ⓝ 3,50/1  
 Ⓞ 1280x630x985  
 Ⓟ 0,794  
 Ⓠ -  
 P **107**



**emil B-9921/4**  
 Ⓢ 15,7  
 Ⓜ 2,56/1  
 Ⓝ 5,88/1  
 Ⓞ 750x510x1050  
 Ⓟ 0,401  
 Ⓠ -  
 P **106**



**harry B-1003/2**  
 Ⓢ 12,9  
 Ⓜ 5,65/4  
 Ⓝ 6,50/2  
 Ⓞ 750x660x940  
 Ⓟ 0,465  
 Ⓠ 2  
 P **42**



**hips B-1802**  
 Ⓢ 8,9  
 Ⓜ 0,51/2  
 Ⓝ 0,92/2  
 Ⓞ 2-750x660x940  
 Ⓟ 0,465  
 Ⓠ -  
 P **16**



**hips B-1802**  
 Ⓢ 7,9  
 Ⓜ -  
 Ⓝ -  
 Ⓞ 750x660x940  
 Ⓟ 0,465  
 Ⓠ -  
 P **16**



**hips B-1802/1**  
 Ⓢ 10,2  
 Ⓜ 1,12/1  
 Ⓝ 2,57/1  
 Ⓞ 750x660x940  
 Ⓟ 0,465  
 Ⓠ -  
 P **16**



**montana B-1430**  
 Ⓢ 18  
 Ⓜ 3,00/1  
 Ⓝ 6,90/1  
 Ⓞ 830x710x840  
 Ⓟ 0,495  
 Ⓠ -  
 P **22**



**montana BB-1430**  
 Ⓢ 26  
 Ⓜ 5,40/1  
 Ⓝ 10,38/1  
 Ⓞ 820x820x1400  
 Ⓟ 0,941  
 Ⓠ -  
 P **22**



**nod B-1620/1**  
 Ⓢ 13  
 Ⓜ 1,70/2  
 Ⓝ 3,91/2  
 Ⓞ 750x660x940  
 Ⓟ 0,465  
 Ⓠ -  
 P **24**



**nopp BB-1803**  
 Ⓢ 5,2  
 Ⓜ 0,75/2  
 Ⓝ 1,35/2  
 Ⓞ 620x595x960  
 Ⓟ 0,354  
 Ⓠ -  
 P **18**



**polar B-1806**  
 Ⓢ 28  
 Ⓜ 4,00/1  
 Ⓝ 9,20/1  
 Ⓞ 1000x760x760  
 Ⓟ 0,577  
 Ⓠ -  
 P **21**



**polar BB-1806**  
 Ⓢ 53  
 Ⓜ 6,10/1  
 Ⓝ 14,1  
 Ⓞ 1800x760x760  
 Ⓟ 1,004  
 Ⓠ -  
 P **21**



**sean S-0807**  
 Ⓢ 16,5  
 Ⓜ 3,09/3  
 Ⓝ 2,37/1  
 Ⓞ 1280x630x985  
 Ⓟ 0,794  
 Ⓠ -  
 P **107**



**shell B-1234**  
 Ⓢ 11,6  
 Ⓜ 1,80/1  
 Ⓢ 4,14/1  
 📏 670x640x440  
 📏 0,189  
 📏 -  
 📏 -  
 P **58**



**snug A-1515/1**  
 Ⓢ 24  
 Ⓜ 1,36/1  
 Ⓢ 3,13/1  
 📏 840x840x440  
 📏 0,310  
 📏 -  
 📏 -  
 P **23**



**snug B-1515/2**  
 Ⓢ 31,5  
 Ⓜ 3,00/1  
 Ⓢ 4,83/1  
 📏 820x820x780  
 📏 0,525  
 📏 -  
 📏 -  
 P **23**



**snug B-1515/3**  
 Ⓢ 37,8  
 Ⓜ 3,90/1  
 Ⓢ 7,13/1  
 📏 820x820x780  
 📏 0,525  
 📏 -  
 📏 -  
 P **23**



**wand S-1102/1**  
 Ⓢ 17,9  
 Ⓜ 0,55/1  
 Ⓢ 1,26/1  
 📏 1250x540x885  
 📏 0,597  
 📏 -  
 📏 -  
 P **49**

## { coat racks }

wieszaki



**8 P-8**  
 Ⓢ 3,8  
 📏 650x400x330  
 📏 0,086  
 P **144**



**16 P-16**  
 Ⓢ 4,5  
 📏 500x430x770  
 📏 0,165  
 P **145**



**16 P-16/2204**  
 Ⓢ 5  
 📏 500x430x770  
 📏 0,165  
 P **145**



**0428 P-0428**  
 Ⓢ 3,1  
 📏 560x525x950  
 📏 0,279  
 P **145**



**8816 P-8816**  
 Ⓢ 3,3  
 📏 500x430x770  
 📏 0,165  
 P **145**



**9955 P-9955**  
 Ⓢ 0,6  
 📏 410x320x180  
 📏 0,024  
 P **144**



**9956 P-9956**  
 Ⓢ 1,15  
 📏 410x320x180  
 📏 0,024  
 P **144**

# { tables, coffee tables }

stoły, stoliki kawowe



**0006 ST-0006**  
 ④ 17  
 ① 1070x1070x720  
 ② 0,824

P 183



**0006 ST-0006 base/podstawa**  
 ④ 3,8  
 ① 820x820x720  
 ② 0,484

P 183



**0258 ST-0258**  
 ④ 12,1  
 ① 820x820x770  
 ② 0,518

P 183



**9006 ST-9006**  
 ④ 11,3  
 ① 820x820x720  
 ② 0,484

P 183



**9717 ST-9717**  
 ④ 10,8  
 ① 820x820x770  
 ② 0,518

P 183



**9718 ST-9718**  
 ④ 11,5  
 ① 820x820x770  
 ② 0,518

P 183



**9744 ST-9744**  
 ④ 14,2  
 ① 820x820x720  
 ② 0,484

P 183



**arcos ST-1403**  
**760x900x1600**  
 ④ 60  
 ① 1730x1020x150  
 ② 960x860x200  
 ③ 0,430

P 176

**arcos ST-1403**  
**760x900x1800**  
 ④ 60  
 ① 1830x930x150  
 ② 800x1000x100  
 ③ 0,335

176

**arcos ST-1403**  
**760x900x2300**  
 ④ 67  
 ① 1730x1020x150  
 ② 960x860x200  
 ③ 0,430

176

**arcos ST-1403**  
**760x900x2600**  
 ④ 67  
 ① 1830x930x150  
 ② 800x1000x100  
 ③ 0,335

176



**arcos STK-1403**  
 ④ 31  
 ① 1120x730x100  
 ② 0,082

P 176



**basic ST-1911/1**  
 ④ 12

P 163



**basic ST-1911/2**  
 ④ 11

P 163



**basic ST-1912/1**  
 ④ 16

P 163



**basic ST-1912/2**  
 ④ 15

P 163



**basic ST-1913/1**  
 ④ 15,5

P 163



**basic** ST-1913/2

⊕ 14,5

P 163



**basic** ST-1914/1

⊕ 19,5

P 163



**basic** ST-1914/2

⊕ 18,5

P 163



**basic** ST-1915/1

⊕ 31,5

P 163



**basic** ST-1915/2

⊕ 29,5

P 163



**bar** ST-9345/2  
750x700x700

⊕ 14  
⊞ 720x720x155  
⊠ 0,080

P 180

**bar** ST-9345/2  
750x800x800

⊕ 18  
⊞ 820x820x95  
⊠ 0,064

P 180

**bar** ST-9345/2  
750x900x900

⊕ 22  
⊞ 920x920x95  
⊠ 0,080

P 180

**bar** ST-9345/2  
750x800x1200

⊕ 24  
⊞ 1220x820x95  
⊠ 0,095

P 180

**bar** ST-9345/2  
750x900x1200

⊕ 30  
⊞ 1220x920x95  
⊠ 0,101

P 180



**bow** ST-0922

⊕ 16,7  
⊞ 820x820x130  
⊠ 0,087

P 180



**candy** STK-1804

⊕ 5,2  
⊞ 620x620x550  
⊠ 0,211

P 168



**candy** STK-1805

⊕ 5,4  
⊞ 620x620x550  
⊠ 0,211

P 168



**cortina** ST-1701

⊕ 22,4  
⊞ 920x920x135  
⊠ 820x820x130  
⊠ 0,202

P 181



**cortina** ST-1701

⊕ 55,1  
⊞ 1640x940x135  
⊠ 820x820x130  
⊠ 0,296

P 181



**diana** ST-1277

⊕ 90  
⊞ 1870x1170x150  
⊠ 800x800x240  
⊠ 0,482

P 182



**ellipse** ST-0931

⊕ 49  
⊞ 1040x1040x140  
⊠ 1040x480x80  
⊠ 755x310x70  
⊠ 0,208

P 178



**garten 4** GST-4

⊕ 22  
⊞ 1120x800x50  
⊠ 0,045

P 147



**hey** ST-1711

⊕ 19,5  
⊞ 820x820x770  
⊠ 0,518

P 166



**hey** ST-1711 base/podstawa

⊕ 6,3  
⊞ 820x820x770  
⊠ 0,518

P 166



**hey** ST-1712

⊕ 19,5  
⊞ 820x820x770  
⊠ 0,518

P 166



**hey** ST-1712 base/podstawa

⊕ 8,3  
⊞ 820x820x770  
⊠ 0,518

P 166



**hey** ST-1713

⊕ 19,5  
⊞ 820x820x770  
⊠ 0,518

P 167



**hey ST-1713 base/podstawa**  
 ④ 5,2  
 ① 720x720x750  
 ② 0,389

P 167



**hey ST-1714**  
 ④ 19,5  
 ① 820x820x770  
 ② 0,518

P 167



**hey ST-1714 base/podstawa**  
 ④ 7,2  
 ① 720x720x750  
 ② 0,389

P 167



**hey STK-1711**  
 ④ 8  
 ① 620x620x550  
 ② 0,211

P 166



**hey STK-1711 base/podstawa**  
 ④ 4  
 ① 620x620x550  
 ② 0,211

P 166



**hey STK-1712**  
 ④ 8  
 ① 620x620x550  
 ② 0,211

P 166



**hey STK-1712 base/podstawa**  
 ④ 4,9  
 ① 620x620x550  
 ② 0,211

P 166



**hey STK-1713**  
 ④ 6  
 ① 620x620x550  
 ② 0,211

P 167



**hey STK-1713 base/podstawa**  
 ④ 3,4  
 ① 620x620x550  
 ② 0,211

P 167



**hey STK-1714**  
 ④ 6  
 ① 620x620x550  
 ② 0,211

P 167



**hey STK-1714 base/podstawa**  
 ④ 4,1  
 ① 620x620x550  
 ② 0,211

P 167



**lennox ST-1405**  
 ④ 65  
 ① 1600x980x150  
 ② 1050x860x100  
 ③ 0,325

P 170



**llow ST-1275**  
**770x1000x2600**  
 ④ 65  
 ① 1630x1030x100  
 ② 1510x765x100  
 ③ 800x1000x100  
 ④ 0,363

P 177

**llow ST-1275**  
**770x1000x3000**  
 ④ 70  
 ① 1830x1030x100  
 ② 1710x765x100  
 ③ 800x1000x100  
 ④ 0,399

177



**nod STB-1620**  
 ④ 10  
 ① 590x580x1100  
 ② 0,376

P 169



**nod STK-1620**  
 ④ 11  
 ① 820x820x420  
 ② 0,282

P 169



**pej STK-1034**  
 ④ 17,9  
 ① 820x820x130  
 ② 0,087

P 180



**puf STK-1311**  
 ④ 14,5  
 ① 870x870x640  
 ② 0,484

P 183



**rest ST-9345/4**  
**750x800x800**  
 ④ 26,8  
 ① 820x820x130  
 ② 0,087

P 180

**rest ST-9345/4**  
**750x900x900**  
 ④ 28  
 ① 920x920x120  
 ② 0,102

180

**rest ST-9345/4**  
**750x800x1200**  
 ④ 36  
 ① 1220x820x120  
 ② 0,102

180

**rest ST-9345/4**  
**750x900x1200**  
 ④ 38  
 ① 1220x920x120  
 ② 0,135

180

**rest ST-9345/4**  
**750x900x1500**  
 ④ 45,6  
 ① 1220x820x120  
 ② 0,120

180



**riva** ST-1612  
 Ⓢ 65  
 📏 1430x980x200  
 📦 0,280

P **172**



**senales** ST-1703  
 Ⓢ 20  
 📏 1200x1200x170  
 📦 0,245

P **179**



**senales** ST-1703  
 Ⓢ 39  
 📏 1500x950x150  
 📦 0,214

P **179**



**sierra** ST-1613  
 Ⓢ 86  
 📏 1540x980x260  
 📏 830x540x100  
 📦 0,437

P **173**



**teba** ST-1606  
 Ⓢ 57  
 📏 1730x1020x150  
 📏 800x290x190  
 📦 0,309

P **175**

## { children's furniture }

meble dziecięce



**kiddy** MDT-9970  
 Ⓢ 6,5  
 📏 -  
 📏 500x500x770  
 📦 0,192

P **68**



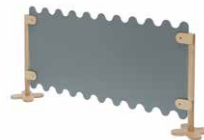
**nino** BST-1710  
 Ⓢ 2,9  
 📏 -  
 📏 500x430x770  
 📦 0,16555

P **68**



**nino** MDK-1710  
 Ⓢ 1,8  
 📏 -  
 📏 350x350x550  
 📦 0,067

P **68**



**nino** MDT-1710  
 Ⓢ 2,8-hurdle/piotek, 0,7-leg/noga  
 📏 1000x500x100  
 📦 0,050

P **69**



**nino** SK-1710  
 Ⓢ 9,7  
 📏 400x300x840  
 📦 0,100

P **69**



**nino** STK-1710  
 Ⓢ 13  
 📏 720x720x550  
 📦 0,285

P **69**











**Kim Vestergaard**  
Fameg Nordic & Baltic,  
www.fameg-nordic.com  
mob. +45 2070 3333  
e-mail: kv@fameg-nordic.com



**Adam Nierzwicki**  
Fameg UK Ltd.,  
www.fameg.co.uk  
mob. +44 7727 004445  
e-mail: an@fameg.co.uk



**Juan Muñoz**  
Fameg Iberia,  
www.famegiberia.es  
mob. +34 622 873 761  
e-mail: jmunoz@famegiberia.es



**Marco Novo**  
Fameg France SARL,  
www.fameg.fr  
mob. +33 (0)6 95 30 93 15  
e-mail: marco@fameg.fr



**Export Department / Sprzedaż Eksportowa:**

tel. +48 44 6821566, +48 44 6821049

fax +48 44 6821047

e-mail: info@fameg.pl



**Domestic Sales / Sprzedaż Krajowa:**

tel. +48 44 6821417

fax +48 44 6832047

e-mail: sprzedazkraj@fameg.pl

Layout and DTP / Projekt i produkcja katalogu: **PROCOGITO.PL**

**Legal note:**

As part of our continuous improvement of product within our market place FAMEG Sp. z o.o. reserves the right to make, at any time, changes of colour, design, size and function of the products. The offer presented in the catalogue is not an offer within the meaning of the Civil Code. The catalogue is published for information purposes only. Due to the limitations of printing technology and photography, the colours in the catalogue may differ from Fameg standard finishes and are only a representation.

**Nota prawna:**

W ramach stałego udoskonalania produktów zgodnie z wymogami rynkowymi i prawnymi FAMEG Sp. z o.o. zastrzega sobie prawo do wprowadzania w dowolnej chwili zmian kolorów, wzornictwa, wymiarów i funkcji prezentowanych wyrobów. Prezentowana w katalogu oferta nie stanowi oferty w rozumieniu Kodeksu Cywilnego. Katalog jest publikowany wyłącznie w celach informacyjnych. Ze względu na ograniczenia wynikające z techniki druku, kolory reprodukowane w katalogu mogą różnić się od rzeczywistych kolorów oferowanych produktów.



Printed on certified paper.  
Wydrukowano na papierze certyfikowanym.





**FAMEG**

FAMEG Sp. z o.o.  
ul. 11 Listopada 2, 97-500 Radomsko,  
Poland

[www.fameg.pl](http://www.fameg.pl)