



COLLECTION CATALOGUE

PRODUCTS, INSPIRATION AND CASES
RETAIL / HOSPITALITY



F R A N D S E N

We proudly present our Frandsen Collection Catalogue designed to inspire and showcase some of our absolute best and most iconic designs.

Our products and competencies are both highly suitable for retail and contract. Our standard collection consists of modern designs with a Nordic touch, ready to be shipped directly from our warehouse in Denmark.

Through strong partnerships with designers and architects, we are also a reliable and professional partner in hospitality projects, bespoke designs and private label lighting.

In 2022, we launched our Hospitality Collection. In this collection you will find a number of functional and aesthetic lighting solutions which can easily be implemented in contract briefs and large projects.

PRODUCTS

- 08 BALL.
- 20 BENJAMIN.
- 24 BF20.
- 26 BUTTERFLY
- 34 LYSS.
- 40 AIR.
- 44 FM1954.
- 48 FM2014.
- 50 MINNEAPOLIS.
- 56 SATELITE.
- 58 CHAMP.
- 76 FULL COLLECTION.

PROJECTS

- 16 ME & ALL.
- 18 SCANDIC KOKSTAD.
- 19 THE SLAAK.
- 23 WORK & CO.
- 38 RAUS ARTEK.
- 39 QUALITY HOTEL VIEW.
- 54 HILTON SCHIPHOL.

HOSPITALITY COLLECTION

- 60 HOSPITALITY COLLECTION
- 62 READING LIGHTS.
- 64 WALL LIGHTS.
- 66 FLOOR LAMPS.
- 68 TABLE LAMPS.
- 70 DARK LED.
- 72 BATHROOM LIGHTS.
- 74 PENDANTS AND CEILING LIGHTS.
- 80 FULL COLLECTION.

SEE MORE
WWW.FRANSEN.COM

FRANDSEN

YOUR PREFERRED COLLABORATION PARTNER



Retail and contract

Our Frandsen collection consists of lights that are highly suitable for both retail and contract. We work closely with designers and collaboration partners to develop aesthetic and modern designs where functionality and a beautiful lighting design unites. Our lights are a highlight in both private residents and hospitality projects, thus fulfilling the need for affordable and appealing lighting solutions.

Hospitality collection

At Frandsen, we are specialized in developing lights and lighting solutions for our clients and as supplier of both private label solutions and customized contract lighting, we have the experience and know-how to develop lighting that fits hospitality projects in both design and functionality. With increasing demands for shorter lead times and a grab-and-go opportunity for hospitality lights, we have developed a Hospitality Collection of functional and aesthetic lighting solutions – in stock and ready to cast light on your project.

Bespoke

At our Bespoke department we customize lighting solutions to fit your exact project. Through strong partnerships and close collaborations with designers, architects

and hotels, we are succeeding in carrying out various contract projects where we develop lights for a variety of clients. We use intelligent development, creativity and flexibility to create value for our clients and by doing so we make sure that the final design fits the brief. We are experts in developing lights and lighting solutions and we aim to be the preferred partner to our clients by creating unique and individual solutions and offering on-demand support. Whether you need us to design your lights, have a concept and a specific design in mind or want to use some of our standard products with new colours and tweaks, you are always welcome to contact us.

Private label

Through partnerships with designers and clients we have successfully developed a number of product lines for the private label market. Whether your business has a specific design idea or wants us to be the designer, we have the knowledge and experience to control the development, production and delivery of quality products for your brand.



BENNY FRANDSEN
(1941-2021)
DESIGNER

The story of Frandsen began in 1968 when Benny Frandsen started designing lamps in his basement. That same year, he designed the BALL pendants and magnetic wall lamps, which we still produce to this day as one of our bestselling series.

Benny Frandsen has won numerous international design awards for his lamp designs over the years and was known for his graphic shapes and inspiring attitude. The Ball lamp remains his most recognized design, and in 2018, it celebrated its 50th anniversary. The Ball quickly became a Danish design icon and in the 70s you could find it in many Danish homes in brown or orange nuances, which at that time matched the interior design perfectly.

Today, the Ball series is available in a wide range of contemporary colours. From the classic black and white editions to glossy mint or red colours, the Ball remains as relevant as ever. Benny Frandsen was also the man behind several other designs in the Frandsen collection.

BALL SINGLE TABLE LAMP, GLOSSY RED



BALL.
DESIGNER: BENNY FRANDSEN



BALL Ø18 PENDANT, GLOSSY PALE GREY



Ball is a symbol of classic Danish design that successfully has developed and stayed current and loved throughout the years.

Created and designed by Benny Frandsen in 1968, Ball is a diverse and fun series that effectively combines elements of playful design and clean lines, making this series highly usable in both private homes and professional settings.

The BALL series is available in several colours, finishes and sizes, and is characterized for its direct yet soft light, which is perfect as a reading light or for

illuminating a dining or kitchen table. Small holes on the top of the shade lets out rays of light for an ambience feature.

If you want a more ambient expression, the BALL Glass Pendant in opal glass provides plenty of charm and beautiful light.

In 2021, we introduced five new colours to the Ball Magnet Wall and the Ball Ø18 pendant. These calm and soft pastels are rooted in nature's colour scheme, which creates a contemporary yet timeless palette.



BALL SINGLE TABLE LAMP, MATT WHITE



BALL SINGLE FLOOR LAMP, MATT BLACK



BALL GLASS Ø25



BALL GLASS Ø25



CUSTOM-MADE LIGHT DISPLAY

BESPOKE PROJECT

BALL AND BESPOKE LAMPS

PROJECT: ME & ALL
ARCHITECT: JOI-DESIGN

"In the public areas, the special highlight and a real eye-catcher is the huge WOW logo above the bar, which is custom made by Frandsen. In line with the nautical design theme, the logo has an industrial, rough style. Made of corten steel it bathes the lobby in a pleasant light. In the rooms, we were able to create a cozy lighting atmosphere by using many different light sources from Frandsen – giving guests the space to come down. Again, Frandsen has created a real highlight for us – when entering the room you spot a custom made mirror element above the washbasin made from tube lights.

Frandsen has brought our interior design ideas in the Me & All Hotel Kiel to life with its custom design lights contributing to an amazing guest experience."

Hannah Loch, Senior Interior Designer at JOI-Design



BALL WITH HANDLE, BLACK

"Frandsen has brought our interior design ideas in the Me & All Hotel Kiel to life with its custom design lights"

HANNAH LOCH, JOI-DESIGN



BALL WALL, MATT BLACK

BESPOKE PROJECT

BALL.

PROJECT: THE SLAAK
ARCHITECT: HDVL DESIGNMAKERS

For The Slaak in The Netherlands, we worked together with HDVL DESIGNMAKERS and we developed light to the hotels' guest rooms, meeting rooms and restaurant.

"In our design the guests can experience the charms of the 50's with the luxurious feel of contemporary comfort."
HDVL Designmakers



BALL BESPOKE EDITION, BESPOKE COLOUR

BESPOKE PROJECT

BALL.

PROJECT: SCANDIC KOKSTAD

BALL WALL, MATT BLACK



BENJAMIN PENDANT, MATT WHITE

BENJAMIN.
DESIGNER: BENNY FRANDSEN



BENJAMIN FLOOR LAMP
MATT BLACK



BENJAMIN TABLE LAMP
MATT BLACK

With its monochromatic look and strong graphic design these lamps by Benny Frandsen are a perfect fit to any space. The minimalistic lamp creates a natural focus point for the eye and adds a contemporary yet timeless twist to any setting.



BENJAMIN PENDANT
MATT WHITE



BENJAMIN PENDANT. MATT WHITE

"Scandinavian architecture pays homage to natural light, inviting it in and using it as a strong design element in physical spaces."

Aspekt office

BESPOKE PROJECT

BENJAMIN.

PROJECT: WORK & CO.

ARCHITECT: ASPEKT OFFICE

When Aspekt Office designed Work & Co's new Copenhagen office one of the criterias was to design a workspace that would put a relaxed spin on a corporate environment. Thus, Aspekt Office infused the historical urban

architecture with an almost brutalist grid-modernism, using a network of lines to visually frame the interior. For this brief, our Benjamin pendants were the perfect choice with their modern and geometric shapes.



BF20, BRUSHED SATIN

BF20.
DESIGNER: BENNY FRANDBSEN



BF20, BRUSHED SATIN

Designed by Benny Frandsen in 2020, the BF20 series combines soft and spherical design with clean and minimalistic lines.

When turned on, the BF20 lamps gives a clear and direct light downwards while the acrylic top allows the light to softly shine upwards as well, creating an interesting and beautiful light installation.

Frandsen –

We light up life's best moments.

Rooted in a strong design heritage, Frandsen represents a love of organic, simple and graphic lighting solutions. We want to inspire and evoke curiosity and aim to show and tell how our products can be used to light up any space and brighten all the best moments in life.



BUTTERFLY, TAN GREY

BUTTERFLY, MATT STEEL BLUE



BUTTERFLY.
DESIGNER: TONI RIE

Butterfly is inspired by natural materials and an excitement for the Nordic design language.

The spherical shapes of the half domes create an interplay between the round lines of the lamp. The top dome is fitted with discreet holes to make the soft light spread upwards, while the opaque surface of the bottom dome sheds an atmospheric and mellow light making Butterfly a great choice for a variety of settings.



BUTTERFLY, PALE GREEN



BUTTERFLY, PALE GREEN



Butterfly

With the chrome finish you can add a dramatic mirror-like effect, that serves as a perfect contrast to any colour scheme or to create contrast in a Nordic design where it compliments and gives an eye-catching edge to various types of wood.



LYSS, MATT GREEN

LYSS.
DESIGNER: TONI RIE

A meticulous play with geometry is a feature that we always have worked with at Frandsen and the design of the Lyss series is no exception.

Created by Toni Rie in 2019, this series is created with exceptional harmony allowing

the eye to wander through different forms and shapes.

The Lyss series is available in different variations and a bold yet grounded colour choice makes this pendant perfect for any space.

LYSS WALL LAMP
LYSS PENDANT
MATT WHITE



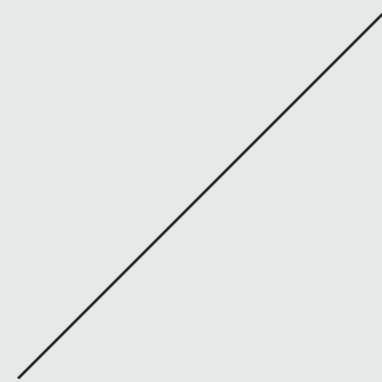
LYSS TABLE LAMP, MATT BLACK



PROJECT: RAUS ARTEK
GERMANY



JOB WALL, BLACK
PHOTOCREDITS BY FRANZ GRUSÉNEWALD



JOB TABLE LAMP, BESPOKE COLOUR

PROJECT: QUALITY HOTEL VIEW
SWEDEN

AIR.
DESIGNER: TONI RIE

Air is a celebration of the imperfect – that charming element that distinguishes the handcrafted from the factory-made.

The opal-white glass combined with the asymmetric lines produce a soft, well-rounded light that fills the entire room, rather than just illuminating a single surface. With a light output spanning 360°, the Air pendant has the added effect of making a room seem bigger.



AIR, WHITE OPAL GLASS



AIR, WHITE OPAL GLASS



FM1954. WHITE



OVE RIIS & MIKKEL BAHR
FRIIS & MOLTKE

FRIIS & MOLTKE

Our Friis and Moltke lamps are known for their minimalistic style and modern design. The FM series contrasts timelessness and clean lines with modern materials, contributing to a graphic and eye-catching look.

The FM series was designed in 1954 as one of the first designs from Friis and Moltke, and during the years the series has been updated with new materials. Now, the lamps come in steel and have lacquered, matte surfaces which are created to stand the test of time.

The FM series are perfect for homes, hotels and institutions where its simplistic design compliments several types of interiors.



FM1954.

The FM series was designed in 1954 as one of the first designs from Friis and Moltke, and during the years the series has been updated with new materials.



FM2014. WHITE

FM2014.
DESIGNER: FRIIS & MOLTKE



FM2014. BLACK

DESIGNING WITH FRIIS & MOLTKE



MINNEAPOLIS FLOOR LAMP, BLACK

MINNEAPOLIS DESIGNER: FRIIS & MOLTKE

The Minneapolis lamp series was created when Friis & Moltke designed the Scanticon Hotel and Conference Center in Minneapolis, Minnesota, USA in 1984 (today Crowne Plaza).

The lamps were also used at the Borupgård Conference Centre and at H.C. Andersen Hotel in Odense, both in Denmark.

With its unique lines, almost Japanese in style, the series complements many interior design and decor styles, extending beyond the hotel industry and into both the European and Nordic design language. The Minneapolis series consist of pendants, table, floor and wall lamps.



MINNEAPOLIS FLOOR LAMP, WHITE



MINNEAPOLIS TABLE LAMP, BLACK

For Hilton Schiphol, we designed and delivered bedside lamps, desk lights and lighting for the lobby, spa and restaurant.

BESPOKE PROJECT
BESPOKE LIGHTING.
PROJECT: HILTON, SCHIPHOL
ARCHITECT: HBA LONDON



BESPOKE TABLE LIGHTING

"Hilton Amsterdam Airport Schiphol showcases Hilton's new lobby concept which brings together, in a single open-plan area, unique 'islands' which serve as multi-functional spaces, including a reception area, lounge and bar."

HBA London



BESPOKE RESTAURANT LIGHTING



BESPOKE BEDSIDE LIGHTING

SATELLITE, BLACK



SATELLITE.
DESIGNER: FRIIS & MOLTKE

Satellite is the perfect desk lamp for the work station. The minimalistic design is focusing on carefully crafted details and the light source is hidden with a shade, making the light spread out and thus creating perfect work light.



SATELLITE, WHITE (BESPOKE)



SATELLITE, BLACK

STAY UPDATED
WWW.FRANSEN.COM



CHAMP TABLE LAMP, ALU



We are experts in **developing lights** and lighting solutions to hospitality projects and through **technical know-how**, experience and close collaborations we can offer customers **quality solutions** and on-demand support.

FRANDSEN BESPOKE HOSPITALITY COLLECTION

At Frandsen, we are specialized in developing lights and lighting solutions for our clients, and as supplier of both private label solutions and customized hospitality lighting, we have the experience and know-how to develop lighting that fits large hospitality projects in both design and functionality.

REFERENCES

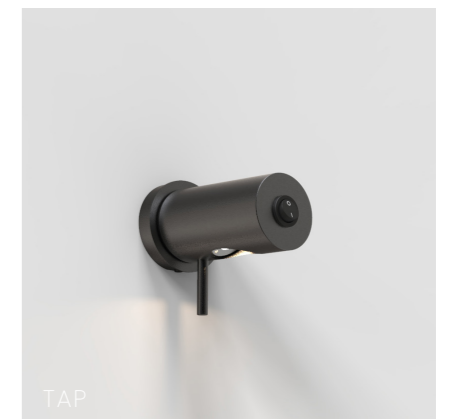
W HOTELS / CITIZENM / BEST WESTERN / HYATT REGENCY / CROWN PLAZA / THORN
HOTELS / ELEMENT / STARBUCKS / URBY / PARK INN / NORDIC CHOICE / HARD ROCK
HOTELS / SCANDIC HOTELS / HILTON / IBIS / WESTIN / HOLIDAY INN / ZOKU / RIU HOTELS

READING LIGHTS

HOSPITALITY COLLECTION ENTIRE ASSORTMENT P. 80

With several years of experience we know how important it is for our clients to develop a hotel room that is both aesthetic and functional. This is why we have developed two very different reading lamps, each of which are easy to integrate in any interior design and provides the guest with a functional reading light.

We have two different standard reading lights for hospitality projects. The TAP reading lamp and the TM reading lamp. The TAP light has built-in LEDs and is a discrete and simple solution to create light at a hotel room. The TM reading light has a small, compact design and integrated LED light. It is perfect as an extra bedside lamp in hotel rooms where users often need a good, clear light in order to enjoy a book or the newspaper.



Our two standard reading lights each offer different design aesthetics but are both recognized for their functionality, providing the user with the perfect light for reading.



CAP WALL LIGHT
MOXY HOTEL
PHOTOCREDITS BY CHRISTIAN KRETSCHMAR

WALL LIGHTS

HOSPITALITY COLLECTION

ENTIRE ASSORTMENT P. 80

In our Hospitality Collection you will find three wall lamps, FM, Cap and Spot, each offering functionality and timeless aesthetics.

The FM lamp is, as the name suggest, designed by the renowned design and architect studio Friis & Moltke. Originally designed for a Danish hotel the FM wall lamp is designed with an emphasis on simple, functional and decorative aesthetics. Furthermore, the design is developed around the requirements for functionality that lighting in a hotel room needs.

Our Cap light is more discrete in its design language, following clean lines and simplicity.

The Spot wall lamp is also an excellent example of a simple solution that fits several types of design and with its direct light it illuminates the area perfectly.



SPOT WALL LIGHT
SCANDIC DOWNTOWN CAMPER

FLOOR LAMPS

HOSPITALITY COLLECTION

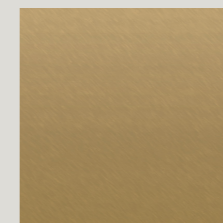
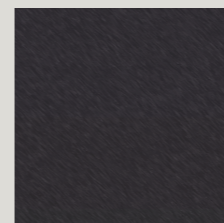
ENTIRE ASSORTMENT P. 80

All our hospitality products are designed with versatility in mind and most are available in two different types of metal finishes - a black matte fine structure or a painted brass finish.

With no less than six standard floor lamps you have plenty of opportunities to find the lamp that suits your project. We have a variety of different designs, each representing its own design language and bringing a different style to a room.

When designing your spaces, floor lamps are a convenient solution for bringing light into various corners

of the space whether it is to create an aesthetic appeal in your hallway or contributing with functional light by the lounge area. The floor lamps are also perfect reading lights and are an optimal solution for hotel rooms. By using floor lamps when decorating spaces, the vertical line from floor to lamp shade creates a natural fix point for the eye and forms an interesting graphic installation.



Almost all our products in the Hospitality Collection are available in either RAL 9005 black matte fine structured or in a painted brass finish.



SPOT FLOOR LAMP

TABLE LAMPS
HOSPITALITY COLLECTION
ENTIRE ASSORTMENT P. 81

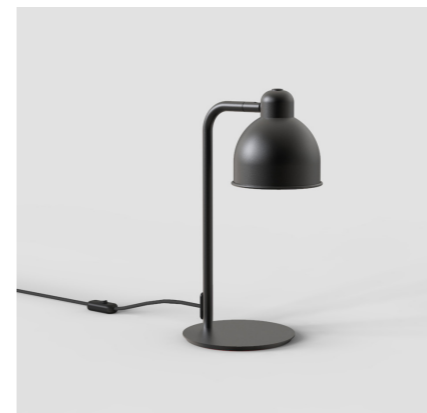
A table lamp is easy to place on any straight surface, creating atmospheric and functional lighting options. The table lamps in our Hospitality Collection are designed to fit a modern interior scheme and allows you to find the table lamp that suits your style and need for functionality. A majority of our table lamps have sockets for bulbs, allowing you to install the light source that suits your need. However, we do also offer LED lights, which have made it possible for us to develop small and minimalistic designs. Whether you need a functional office desk lamp or a bedside table light, we have carefully designed our table lamps to bring you a comfortable and functional light.



FM TABLE LAMP
Shade: White chintz on white PVC. E27 socket type.



CAP TABLE LAMP
Integrated LED and opal white diffuser



INDUSTRY
E14 socket type and black fabric cable



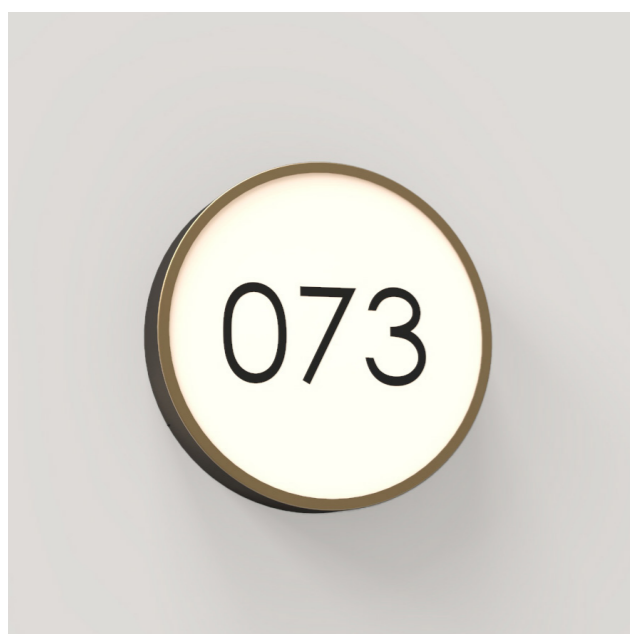
DARK LED
Integrated LED and opal white diffuser



HITCHCOCK
GU10 socket and black fabric cable



SPOT
GU10 socket type and black fabric cable



DARK LED
HOSPITALITY COLLECTION
ENTIRE ASSORTMENT P. 81

We have created a simple and sleek DarkLED series in Ø36,7 and Ø45 cm. Our DarkLED lights are made with integrated LED and an opal white acrylic diffuser evens out the light and creates a soft and decorative lighting solution.

Our DarkLED lamps can serve many different purposes beyond mere light sources. The lights are perfect for room numbers, direction information, room info or more.

BATHROOM LIGHTS

HOSPITALITY COLLECTION

ENTIRE ASSORTMENT P. 81

At Frandsen, we offer three options of bathroom lights for your hospitality project. With shorter lead times and reduced costs compared to a bespoke project, these standard solutions offer flexibility while still giving you a variety of styles to choose from.



TUBE BATHROOM LIGHT
URBY HARRISON

TUBE

The Tube light has integrated LED light and fits perfectly above a bathroom mirror. Due to the opal white acrylic diffuser, the light is soft and functional.



GLOBE

GLOBE

The Globe Light is a classic and discrete light for bathrooms and by choosing a metal finish in either black or brass, you can easily integrate it in various types of designs.



NEPTUNE

NEPTUNE

Our Neptune bathroom light creates a soft but direct light due to the opal white matte glass that surrounds the light source.



BRIDGE PENDANT
THE SLAAK

PENDANTS

HOSPITALITY COLLECTION

ENTIRE ASSORTMENT P. 81

Our Bridge pendant ticks all the right boxes and as many of our other contract products it is available in a black matte fine structure or a painted brass finish. With beautiful details in black stained wood and fabric cords, this pendant is perfect above meeting tables, in restaurants or above desks.

CEILING LIGHT

HOSPITALITY COLLECTION

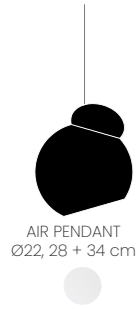
ENTIRE ASSORTMENT P. 81

Lighting design is important for any space and it is a fine balance to decide how much light is needed in a room. Our Spot ceiling lamp makes it easy for you to add extra light to your design. The flexible joints makes it possible to tilt the light in the direction you need, creating the sought after spotlight effect.

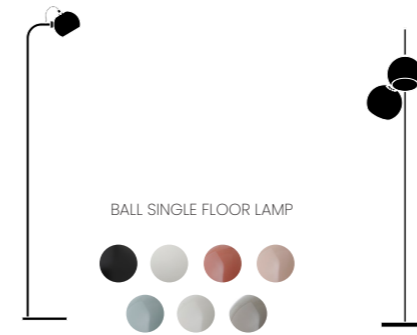
FULL COLLECTION

PRODUCTS IN COLOUR

WE ARE CONTINUOUSLY DEVELOPING OUR COLLECTION.
KEEP UPDATED AT:
WWW.FRANSEN.COM

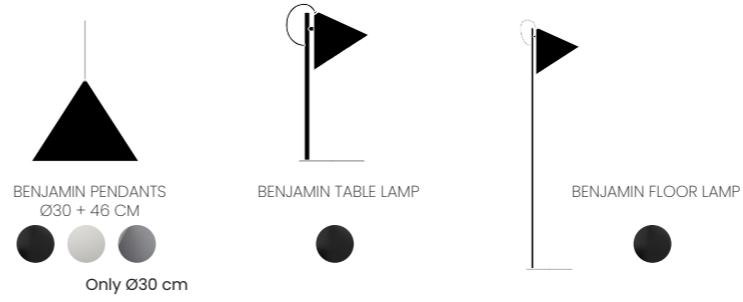


AIR PENDANT
Ø22, 28 + 34 cm



BALL SINGLE FLOOR LAMP

BALL DOUBLE FLOOR LAMP



BENJAMIN PENDANTS
Ø30 + 46 CM

BENJAMIN TABLE LAMP

BENJAMIN FLOOR LAMP

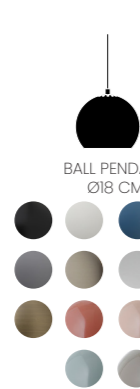
Only Ø30 cm



BALL USB WALL LAMP



BALL PENDANT GLASS
Ø18 + 25 CM



BALL PENDANT
Ø18 CM



BALL PENDANT
Ø25 CM



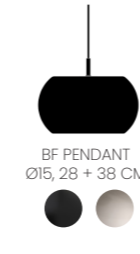
BALL PENDANT
Ø40 CM



BALL W. HANDLE
Ø19 + 25 CM



Only Ø19 cm



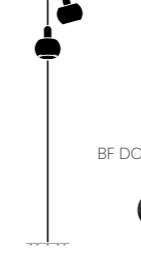
BF PENDANT
Ø15, 28 + 38 CM



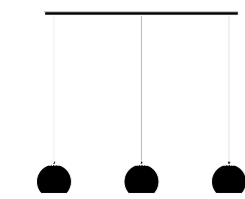
BF SINGLE TABLE LAMP



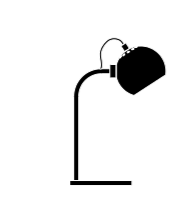
BF SINGLE FLOOR LAMP



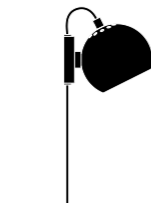
BF DOUBLE FLOOR LAMP



BALL TRACK



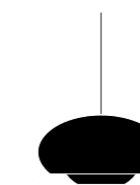
BALL SINGLE TABLE LAMP



BALL MAGNET WALL LAMP



BUTTERFLY PENDANT

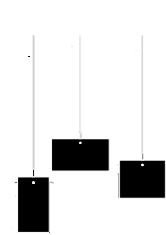


CHAMP PENDANT
Ø30 + 38 CM

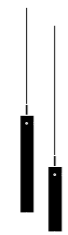


CHAMP TABLE LAMP





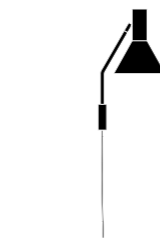
FM 1954 PENDANTS
Ø16, 28 + 41 CM



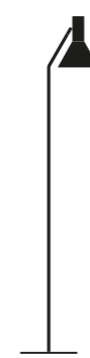
FM 2014 PENDANTS
H24 + 36 CM



LYSS TABLE LAMP



LYSS WALL LAMP



LYSS FLOOR LAMP



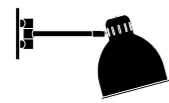
LYSS PENDANT



HIDEOUT FLOOR LAMP



JOB WALL LAMP



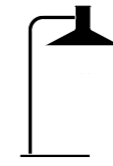
JOB WALL LAMP



JOB TABLE LAMP



MINNEAPOLIS PENDANT



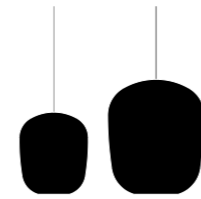
MINNEAPOLIS TABLE LAMP



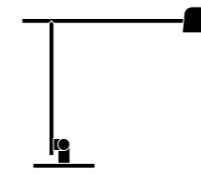
MINNEAPOLIS WALL LAMP



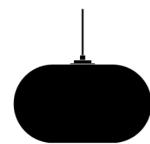
MINNEAPOLIS FLOOR



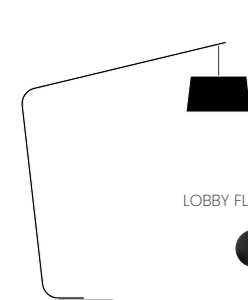
OMBRE PENDANTS



SATELLITE TABLE LAMP



KOBE PENDANT



LOBBY FLOOR LAMP



LUCCA FLOOR LAMP



FULL COLLECTION

HOSPITALITY COLLECTION

READING LIGHTS

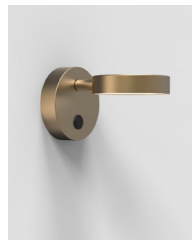


TAP



TM

WALL LIGHTS



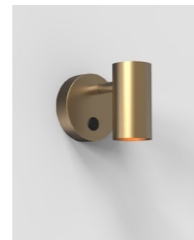
CAP



FM



INDUSTRY



SPOT

FLOOR LIGHTS



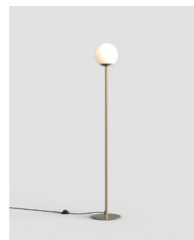
CAP



DARK LED



FM



GLOBE



HITCHCOCK



INDUSTRY



SPOT

TABLE LIGHTS



CAP



DARK LED



FM



HITCHCOCK



INDUSTRY



SPOT

DARK LED



DARK LED
Ø36,7 + Ø45 CM

BATHROOM LIGHTS



GLOBE



NEPTUNE

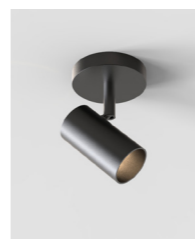


TUBE LIGHT

PENDANTS AND CEILING LIGHTS



BRIDGE



SPOT



SPOT PHASES

EGESKOVVEJ 29
HORSENS, DK-8700

INFO@FRANSEN.COM
+45 76581818

In 1968, founder Benny Frandsen began designing lamps in his basement. That same year, he designed the now iconic BALL pendants and magnetic wall lamps. Since then, the product assortment have expanded and the FRANSEN business has grown.

In 2021, we began a new chapter and by changing the logo we are even easier to recognize and our story is told in an instant. Combining our iconic product, the BALL lamp and our positive attitude in a smile, our logo symbolizes our full service, from the first idea to the final product, making FRANSEN a competent business partner for both retail, contract and private label.



F R A N D S E N

WWW.FRANSEN.COM