

**DINING/SEATING** p. 4

**LOUNGE** p. 20

**GARDEN LIFE** p. 34

**INDEX** p. 40

# OUTDOOR LIVING

**SKAGERAK**  
DENMARK



**SKAGERAK**  
**OUTDOOR LIVING**



Outdoor living since 1976 – Welcome to Skagerak’s outdoor collection Thinking of outdoor living brings up different images for different people. To some, it equals urban life with flourishing courtyards, rooftop dinners and sunset drinks on the balcony. Others instantly think of the suburban setting, with large gardens and porches, or of life in the countryside with farmhouses and summer cabins close to the sea. At Skagerak, we value all these forms of summer living and embrace the many different needs and settings.

Long-lasting design For more than 40 years, we have been developing long-lasting design that pays tribute to the outdoor life in all its variety and richness. And when we say long-lasting, we really mean it! Crafted exclusively from high-quality materials and designed with a timeless expression, our products are designed to lead a long and functional life through generations.

Sustainable choices To us, quality is not only about the choice of materials, looks and function. True design quality can only be achieved when a product is made under the right conditions – in harmony with both people and planet. That’s why we are proud to say that we have been FSC™-certified since 2003, members of the UN Global compact since 2010 and became a certified B Corp in 2017. We have also recently introduced *Reclassic* – our take-back system where we offer to buy back your old Skagerak product when you buy a new one – provided that you have maintained it well. As we do!

Welcome to Skagerak  
Jesper and Vibeke Panduro





Selandia Table p. 43, Mira Chair and Armchair p. 49, Picnic Stool p. 47, Reform Bench p. 48

## DINING/SEATING





A photograph of a wooden dining set on a patio. The set includes a square table and four chairs with a slatted design. The patio is covered by a pergola with a wooden frame. The background is a dense, green garden with various plants and trees. The lighting is bright, suggesting a sunny day. The text "SELANDIA COLLECTION p. 43" is overlaid in the center of the image.

**SELANDIA**  
**COLLECTION** p. 43

**FUORI SERVING  
TROLLEY** p. 50





Drachmann Chair p. 44



Mira Chair p. 49



Plank Bench p. 45

**"WE MAKE AN EFFORT  
IN MAKING EVERYDAY  
OBJECTS IN HIGH QUALITY,  
GOOD DESIGN AND GREAT  
FUNCTIONALITY – FOR YOU  
TO KEEP FOR YEARS."**



Picnic Table p. 47,  
Edge Collection p. 56



Picnic Table and Stools p. 47

**ENGLAND**  
**BENCH** p. 45







Reform Table p. 48, Mira Chair and Armchair p. 49, Plank Bench p. 45

**GERDA**  
**COLLECTION** p. 47









Bollard Oil Lamp p. 57



Edge Pot p. 56



Overlap Table and Benches p. 48

**OVERLAP TABLE** p. 48  
**MIRA CHAIR** p. 49  
**& PICNIC STOOL** p. 47





**DRACHMANN** p. 44

Atlantis Umbrella p. 55



Selandia 2-Seater p. 43





# LOUNGE

**MIRA LOUNGE CHAIR** p. 49  
**& BY YOUR SIDE TABLE** p. 50







Bell Lanterns p. 57, Edge Brass Plate p. 56

**"WHEN WE WORK  
WITH QUALITY, WE TAKE  
PRIDE IN COVERING  
EVERYTHING – FROM  
MATERIAL AND DESIGN  
TO PEOPLE AND  
OUR PLANET."**



Messina Umbrella p. 55, Aito Lounge Chair p. 51,  
Mira Chair and Armchair p. 49



A photograph of an outdoor furniture set in a garden. The set includes a dark grey sectional sofa with cushions, a matching armchair, and a wooden coffee table. The background is a dense wall of green foliage. The text 'TRADITION COLLECTION p. 52' is overlaid on the right side of the image.

**TRADITION  
COLLECTION** p. 52



VIRKELYST  
COLLECTION p. 53



Aito Lounge Chair p. 51



A wooden sunbed is positioned on a dark wooden deck. The sunbed has a slatted backrest and a metal frame. A light blue patterned towel is draped over the side of the sunbed, and a book or magazine is lying on the slatted surface. The deck is bordered by a metal railing with vertical posts. In the background, the ocean stretches to the horizon under a clear blue sky. A small boat is visible on the water. To the right, a white stone wall of a building is visible, featuring a small square window with a colorful abstract painting. A large glass door or window is also visible on the right side of the frame.

**RIVIERA**  
**SUNBED** p. 54



**REGATTA LOUNGE  
CHAIR** p. 51





**"WE USE FSC-CERTIFIED WOOD TO ENSURE RESPONSIBLE FORESTRY AND WE WORK AS AMBASSADORS TO HELP INCREASE THE NUMBER OF FSC-CERTIFIED WOODS."**

Read more about FSC on p. 42.

Messina Umbrella p. 55



Regatta Lounge Bench and Table p. 51

Lise Sunchair p. 54



RIVIERA  
LOUNGE p. 54







Sambito Hammock p. 54

## GARDEN LIFE



REFORM  
BENCH p. 48



Spider Web p. 57



Akiko Petanque p. 57



Beach Tennis p. 57

**"WE EMBRACE  
NATURAL MATERIALS  
THAT AGE BEAUTIFULLY  
AND EMBODY A LIVING,  
GROWING STORY."**



Edge Pots p. 56



Spira Green House p. 50



**PANTRY  
MODULE** p. 50  
Edge Pots p. 56





**OUTDOOR  
COLLECTION**

Let's change the world, one piece of furniture at a time For Skagerak quality means everything. We approach quality as a three-stage process that begins with aesthetics, takes on substance in the choice and treatment of materials and becomes a sustainable unity when proper production processes and conditions are ensured. We are certified as both FSC and B Corp, which means that we honour the demands and principles of sustainable production and business management. We truly believe that quality is here to stay and that we can make positive changes together.



FSC-certified wood FSC is a global non-profit organisation that ensures responsible forestry. FSC means that the workers never fell more trees than the forest can reproduce and the biodiversity of the woods is preserved. FSC also means that the forestry workers are treated respectfully and have proper working conditions, just as FSC supports and cares for the local community. At Skagerak we are committed to expanding FSC-certified forests, so they can supply more FSC wood in the future. At this time it is still a challenge to ensure FSC teak, but we ambitiously pursue our goal of being 100% FSC-certified across all wood types by 2025.

*Skagerak has been FSC-certified since 2003. Our certificate number is FSC™ C004462.*



UN Global Compact As a member of UN Global Compact, Skagerak incorporates fundamental responsibilities in the areas of human rights, labour, environment and anti-corruption. We incorporate the Ten Principles of the UN Global Compact in our strategies, policies and procedures because we believe it makes a difference, and because we want to uphold our basic responsibility to people and planet. Every year we report our actions directly to the UN Global Compact.

*Skagerak joined the UN Global Compact in 2011.*



B Corp is another priority that we are particularly proud of. B Corp – Benefit Corporation – is about balancing purpose and profit and using business as a force for good. As a B Corp member we set the highest standards for social and environmental performance, accountability and transparency and strive to incorporate these ambitions into our everyday business practices.

*Skagerak was certified as a B Corp business in 2017.*



Reclassic At Skagerak we are dedicated to the products we create and to ensuring their long lifespan. That is why we have invented Reclassic. Reclassic is another way that we enter the orbit of maintenance and sustainability. Skagerak lets you return your old furniture in exchange for a new purchase. Reclassic is our take-back guarantee as a further incentive for you to care for your Skagerak furniture and protect the environment. When you buy a new piece of furniture, you can sell it back to us years later, provided it has been well maintained, and the Reclassic piece will get a new life in a new home.

*Reclassic was initiated in 2017.*



Five Year Warranty At Skagerak, long-lasting design means long-lasting life. Our outdoor furniture is built to last, and it lasts longer and better when it is maintained properly. We offer expert guidance on the best care and maintenance of Skagerak furniture, so you can keep your furniture looking beautiful for many years to come.

*We have a five-year guarantee on our products.*



## SELANDIA 2-SEATER

Skagerak Design

1400516  
Teak  
WxDxH: 100x58x87 cm  
Seat H: 44 cm



**Selandia Chair**  
Anders & Lars Hegelund

S1400503  
Teak  
WxDxH: 44,5x47,5x85,5 cm  
Seat H: 45 cm



**Selandia Armchair**  
Anders & Lars Hegelund

S1400505  
Teak  
WxDxH: 56x58x88 cm  
Seat H: 45 cm



**Selandia Chair Cushion**  
Skagerak Design

1960818\* White / 1960817\* Ash  
1960816\* Charcoal / 1960819\* Marine  
Outdoor Textile / Quickdry Outdoor Foam  
LxWxH: 37x40x3 cm



**Selandia Armchair Cushion**  
Skagerak Design

1960822\* White / 1960821\* Ash  
1960820\* Charcoal / 1960823\* Marine  
Outdoor Textile / Quickdry Outdoor Foam  
LxWxH: 42x42x3 cm



**Selandia Table**  
Anders & Lars Hegelund

1400519  
Teak  
ØxH: 94x73 cm



**Selandia Table**  
Skagerak Design

1400518  
Teak  
LxWxH: 75x75x73 cm



**Selandia Table**  
Skagerak Design

1400517  
Teak  
LxWxH: 146,5x75x73 cm



**Selandia Table**  
Skagerak Design

S1450520  
Teak  
LxWxH: 180x100x73 cm



**Selandia Extension Plate**  
Skagerak Design

1450525  
Teak  
LxWxH: 50x100x5,5 cm



**Columbus Chair**  
Skagerak Design

S1390530  
Teak FSC™ 100%  
WxDxH: 70x60x105 cm  
Seat H: 48 cm



**Columbus Chair**  
Skagerak Design

S1390600  
Teak FSC™ 100%  
SunTexture / Black  
WxDxH: 70x60x105 cm  
Seat H: 48 cm



**Barriere Multi Cushion**  
Skagerak Design

1960826\* White / 1960825\* Ash  
1960824\* Charcoal / 1960827\* Marine  
Outdoor Textile / Quickdry Outdoor Foam  
LxWxH: 140x42x2 cm



## DRACHMANN CHAIR

Bernt Santesson

S1040520

Teak

WxDxH: 73x58x86 cm

Seat H: 44 cm



### Drachmann Bench

Bernt Santesson

S1040505

Teak

WxDxH: 129x58x86 cm

Seat H: 44 cm



### Drachmann Bench

Bernt Santesson

S1040510

Teak

WxDxH: 165x58x86 cm

Seat H: 44 cm



### Drachmann Bench

Bernt Santesson

S1040515

Teak

WxDxH: 209x58x86 cm

Seat H: 44 cm



### Drachmann Chair

Bernt Santesson

S1100520

Sapelli FSC™ 100% / White

WxDxH: 73x58x86 cm

Seat H: 44 cm



### Drachmann Bench

Bernt Santesson

S1100505

Sapelli FSC™ 100% / White

WxDxH: 129x58x86 cm

Seat H: 44 cm



### Drachmann Bench

Bernt Santesson

S1100510

Sapelli FSC™ 100% / White

WxDxH: 165x58x86 cm

Seat H: 44 cm



### Drachmann Bench

Bernt Santesson

S1100515

Sapelli FSC™ 100% / White

WxDxH: 209x58x86 cm

Seat H: 44 cm



### Drachmann Chair Cushion

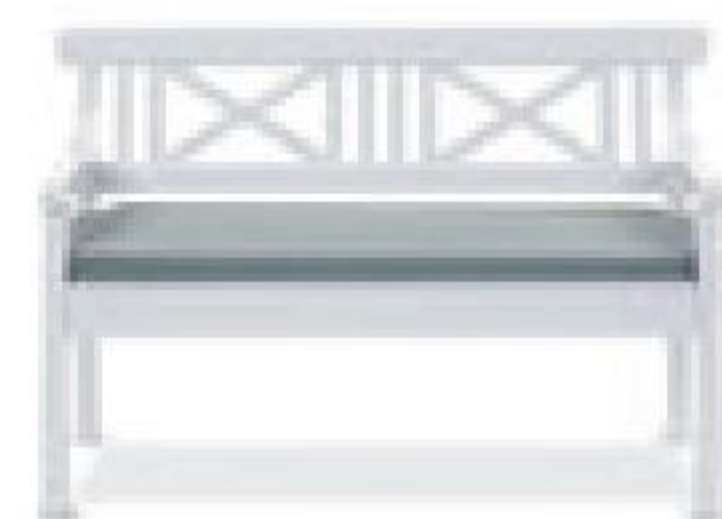
Skagerak Design

1960802\* White / 1960801\* Ash

1960800\* Charcoal / 1960803\* Marine

Outdoor Textile / Quickdry Outdoor Foam

LxWxH: 65x51x5 cm



### Drachmann Bench Cushion

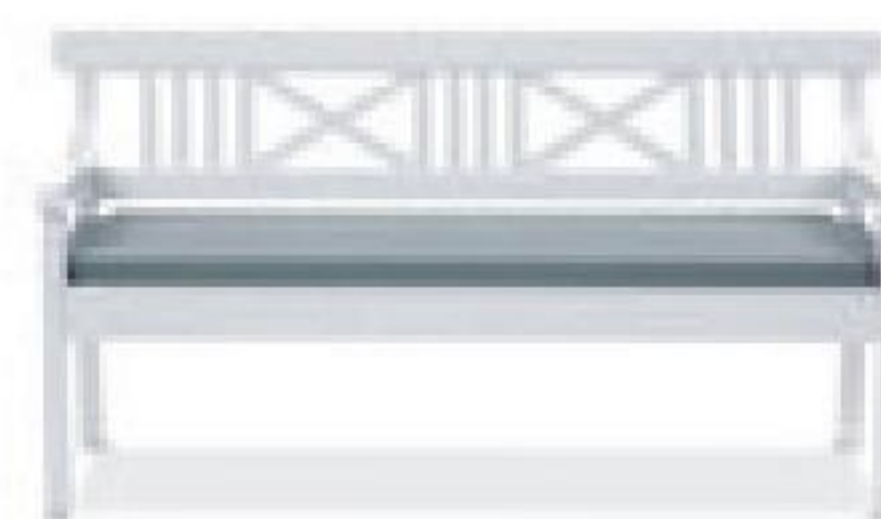
Skagerak Design

1960806\* White / 1960805\* Ash

1960804\* Charcoal / 1960807\* Marine

Outdoor Textile / Quickdry Outdoor Foam

LxWxH: 121,5x51x5 cm



### Drachmann Bench Cushion

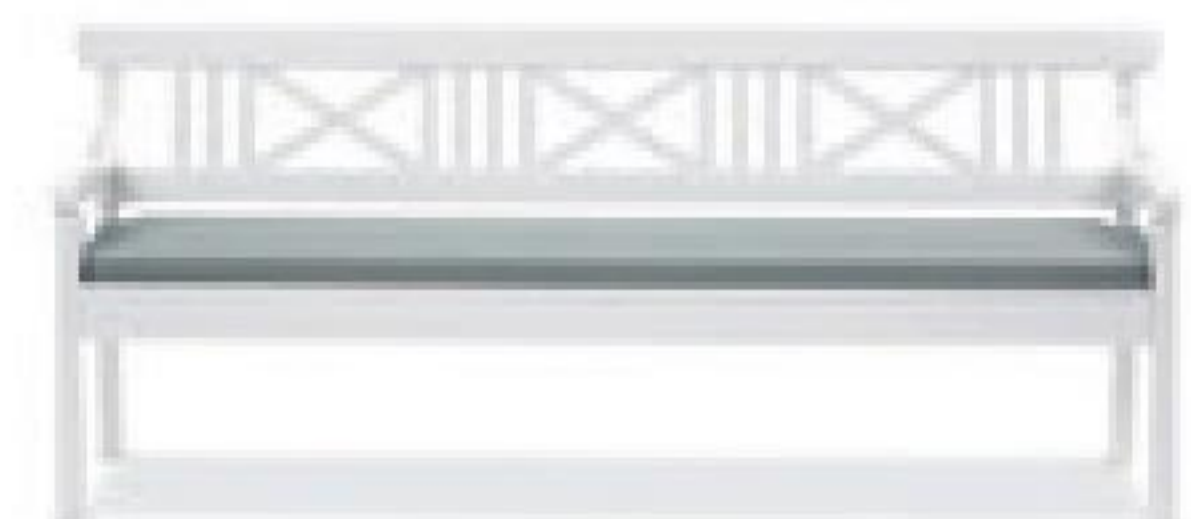
Skagerak Design

1960810\* White / 1960809\* Ash

1960808\* Charcoal / 1960811\* Marine

Outdoor Textile / Quickdry Outdoor Foam

LxWxH: 166x51x5 cm



### Drachmann Bench Cushion

Skagerak Design

1960814\* White / 1960813\* Ash

1960812\* Charcoal / 1960815\* Marine

Outdoor Textile / Quickdry Outdoor Foam

LxWxH: 201x51x5 cm



**Drachmann Table**  
Bernt Santesson

S1042010  
Teak  
LxWxH: 86x86x72 cm



**Drachmann Table**  
Bernt Santesson

S1042015  
Teak  
LxWxH: 156x86x72 cm



**Drachmann Table**  
Bernt Santesson

S1042020  
Teak  
LxWxH: 190x86x72 cm



**Drachmann Table**  
Bernt Santesson

S1082010  
Sapelli FSC™ 100% / White  
LxWxH: 86x86x72 cm



**Drachmann Table**  
Bernt Santesson

S1082015  
Sapelli FSC™ 100% / White  
LxWxH: 156x86x72 cm



**Drachmann Table**  
Bernt Santesson

S1082020  
Sapelli FSC™ 100% / White  
LxWxH: 190x86x72 cm



**England Bench**  
Skagerak Design

S1350505  
Teak FSC™ 100%  
WxDxH: 152x63x89 cm  
Seat H: 44 cm



**England Bench**  
Skagerak Design

S1350510  
Teak FSC™ 100%  
WxDxH: 180x63x89 cm  
Seat H: 44 cm



**Facet Bench**  
Peter Karpf

S1300515  
Teak  
WxDxH: 160x55x81 cm  
Seat H: 45 cm



**PLANK BENCH**

Aurélien Barbry

1350600  
Teak FSC™ 100%  
WxDxH: 144x70x77 cm  
Seat H: 45 cm



**Skagen Chair**  
Mogens Holmriis

S11311005  
Teak FSC™ 100%  
WxDxH: 58x59x88 cm  
Seat H: 44 cm



**Skagen Bench**  
Mogens Holmriis

S1131010  
Teak FSC™ 100%  
WxDxH: 150x59x88 cm  
Seat H: 44 cm



**Skagen Chair Cushion**  
Skagerak Design

1960830\* White / 1960829\* Ash  
1960828\* Charcoal / 1960831\* Marine  
Outdoor Textile / Quickdry Outdoor Foam  
LxWxH: 58,5x43x4 cm



**Skagen Bench Cushion**  
Skagerak Design

1960834\* White / 1960833\* Ash  
1960832\* Charcoal / 1960835\* Marine  
Outdoor Textile / Quickdry Outdoor Foam  
LxWxH: 150x43x4 cm



**Skagen Table**  
Mogens Holmriis

S1131015  
Teak FSC™ 100%  
LxWxH: 140x78x73 cm



**Flux Chair**  
Herman Studio

S1505601  
Teak  
Steel / Light Grey  
WxDxH: 48x50x76,5 cm  
Seat H: 45,5 cm



**Flux Table**  
Herman Studio

1505602  
Teak  
Steel / Light Grey  
ØxH: 89x73 cm



**BALLARE CHAIR**  
Jakob Berg

S1505100  
Teak FSC™ Mix  
WxDxH: 56x56x86 cm  
Seat H: 45,5 cm



**Vendia Chair**  
Mogens Holmriis

S1600522  
Teak FSC™ 100%  
WxDxH: 41x52,5x82,5 cm  
Seat H: 45 cm



**Vendia Table**  
Mogens Holmriis

S1600400  
Teak FSC™ 100%  
ØxH: 75x67 cm



**Ballare Table**  
Jakob Berg

S1505200  
Teak  
LxWxH: 196x90x73 cm





## GERDA TABLE

Included Middle

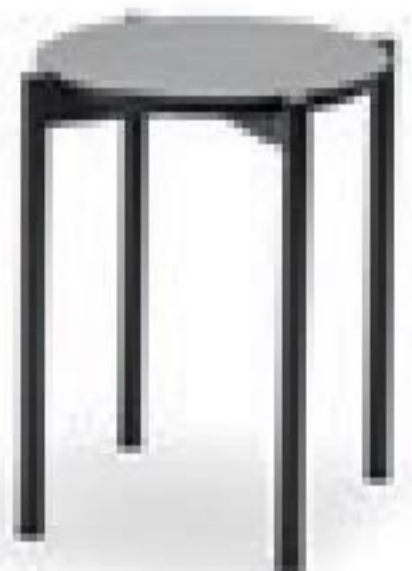
1090001  
Aluminum / Dark Red & Dark Blue  
LxWxH: 74,5x74,5x73 cm



## Gerda Stool

Included Middle

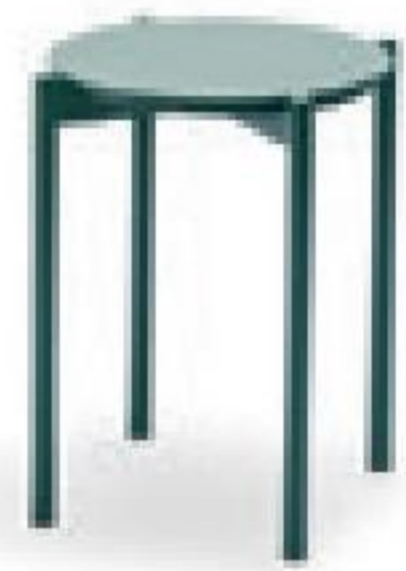
1090002  
Aluminum / Royal Blue & Pebble Grey  
WxDxH: 33x38x45 cm  
Seat H: 45 cm



## Picnic Stool

Herman Studio

1560092  
Aluminum / Anthracite Black  
WxDxH: 39,5x39,5x44,5 cm  
Seat H: 44,5 cm



## Picnic Stool

Herman Studio

1560091  
Aluminum / Hunter Green  
WxDxH: 39,5x39,5x44,5 cm  
Seat H: 44,5 cm



## Picnic Stool

Herman Studio

1560093  
Aluminum / Slate Grey  
WxDxH: 39,5x39,5x44,5 cm  
Seat H: 44,5 cm



## Picnic Table

Herman Studio

1560082  
Aluminum / Anthracite Black  
LxWxH: 105x85x73 cm



## Picnic Table

Herman Studio

1560081  
Aluminum / Hunter Green  
LxWxH: 105x85x73 cm



## Picnic Table

Herman Studio

1560083  
Aluminum / Slate Grey  
LxWxH: 105x85x73 cm



**Overlap Bench**  
TAF Architects

1392013  
Western Red Cedar  
Steel / Anthracite Black  
WxDxH: 200x36x43 cm  
Seat H: 43 cm



**Overlap Table**  
TAF Architects

1392003  
Western Red Cedar  
Steel / Anthracite Black  
LxWxH: 220x90x74 cm



**Overlap Table**  
TAF Architects

1392043  
Compact Laminate / Silver Grey  
Steel / Anthracite Black  
ØxH: 62x72,5 cm



**Overlap Table**  
TAF Architects

1392053  
Compact Laminate / Silver Grey  
Steel / Anthracite Black  
ØxH: 85x72,5 cm



**Overlap Bench**  
TAF Architects

1392012  
Western Red Cedar  
Steel / Hunter Green  
WxDxH: 200x36x43 cm  
Seat H: 43 cm



**Overlap Table**  
TAF Architects

1392002  
Western Red Cedar  
Steel / Hunter Green  
LxWxH: 220x90x74 cm



**Overlap Table**  
TAF Architects

1392042  
Compact Laminate / Ocean Grey  
Steel / Hunter Green  
ØxH: 62x72,5 cm



**Overlap Table**  
TAF Architects

1392052  
Compact Laminate / Ocean Grey  
Steel / Hunter Green  
ØxH: 85x72,5 cm



**Reform Bench**  
Louise Hederström

1560027  
Teak FSC™ 100%  
Aluminum / Anthracite Black  
WxDxH: 110x40x43,5 cm  
Seat H: 43,5 cm



**Reform Table**  
Louise Hederström

1560041  
Teak FSC™ 100%  
Aluminum / Anthracite Black  
LxWxH: 125x71x73 cm



**Reform Bench**  
Louise Hederström

1560008  
Aluminum / Anthracite Black  
WxDxH: 110x40x45,5 cm  
Seat H: 45,5 cm



**Reform Table**  
Louise Hederström

1560037  
Aluminum / Anthracite Black  
LxWxH: 125x71x73 cm



**Reform Bench**  
Louise Hederström

1560026  
Teak FSC™ 100%  
Aluminum / Hunter Green  
WxDxH: 110x40x43,5 cm  
Seat H: 43,5 cm



**Reform Table**  
Louise Hederström

1560040  
Teak FSC™ 100%  
Aluminum / Hunter Green  
LxWxH: 125x71x73 cm



**Reform Bench**  
Louise Hederström

1560006  
Aluminum / Hunter Green  
WxDxH: 110x40x45,5 cm  
Seat H: 45,5 cm



**Reform Table**  
Louise Hederström

1560036  
Aluminum / Hunter Green  
LxWxH: 125x71x73 cm



**Mira Chair**  
Mia Lagerman

1395003  
Steel / Anthracite Black  
WxDxH: 54x51x78 cm  
Seat H: 46 cm



**Mira Armchair**  
Mia Lagerman

1395013  
Steel / Anthracite Black  
WxDxH: 58x51x78 cm  
Seat H: 46 cm



**Mira Table**  
Mia Lagerman

1395023  
Steel / Anthracite Black  
LxWxH: 80x80x73 cm



**Mira Table**  
Mia Lagerman

1395033  
Steel / Anthracite Black  
LxWxH: 160x80x73 cm



**Mira Chair**  
Mia Lagerman

1395002  
Steel / Hunter Green  
WxDxH: 54x51x78 cm  
Seat H: 46 cm



**Mira Armchair**  
Mia Lagerman

1395012  
Steel / Hunter Green  
WxDxH: 58x51x78 cm  
Seat H: 46 cm



**Mira Table**  
Mia Lagerman

1395022  
Steel / Hunter Green  
LxWxH: 80x80x73 cm



**Mira Table**  
Mia Lagerman

1395032  
Steel / Hunter Green  
LxWxH: 160x80x73 cm



**Mira Chair**  
Mia Lagerman

1395001  
Steel / Slate Grey  
WxDxH: 54x51x78 cm  
Seat H: 46 cm



**Mira Armchair**  
Mia Lagerman

1395011  
Steel / Slate Grey  
WxDxH: 58x51x78 cm  
Seat H: 46 cm



**Mira Lounge Chair**  
Mia Lagerman

1395046  
Steel / Anthracite Black  
WxDxH: 63x64x73 cm  
Seat H: 42 cm



## MIRA LOUNGE CHAIR

Mia Lagerman

1395045  
Steel / Hunter Green  
WxDxH: 63x64x73 cm  
Seat H: 42 cm



**Spira Growth Table**  
Mia Lagerman

1600850  
Teak  
Hot-dip Galvanized Steel  
LxWxH: 120,5x45,5x87 cm



**Pantry Module**  
Maria Zachariae

S1600810  
Teak  
Fibre Concrete  
Stainless Steel  
LxWxH: 63x60x91,5 cm



**Pantry Module**  
Maria Zachariae

S1600820  
Teak  
Fibre Concrete  
Stainless Steel  
LxWxH: 114x60x91,5 cm



**Spira Green House**  
Mia Lagerman

1600851  
Teak  
Glass  
Steel  
WxDxH: 39x37,5x52 cm



**Fuori Serving Trolley**  
Monique Consentino

1560502  
Teak FSC™ 100%  
Aluminum / Silver White  
WxDxH: 75x48x76 cm



**Fuori Serving Trolley**  
Monique Consentino

1560507  
Teak FSC™ 100%  
Aluminum / Hunter Green  
WxDxH: 75x48x76 cm



## BY YOUR SIDE TABLE

Maximilian Schmahl

1507001  
Aluminum / Hunter Green  
Teak  
LxWxH: 42x43x49 cm



**By Your Side Table**  
Maximilian Schmahl

1507002  
Aluminum / Anthracite Black  
Teak  
LxWxH: 42x43x49 cm



**By Your Side Table**  
Maximilian Schmahl

1507003  
Aluminum / Dark Blue  
Teak  
LxWxH: 42x43x49 cm



**By Your Side Table**  
Maximilian Schmahl

1507004  
Aluminum / Light Grey  
Teak  
LxWxH: 42x43x49 cm



**Regatta Lounge Bench**  
Hans Thyge & Co.

S1508650  
Teak  
WxDxH: 133x72x74 cm  
Seat H: 40 cm



**REGATTA LOUNGE CHAIR**

Hans Thyge & Co.

S1508500  
Teak  
WxDxH: 75x72x74 cm  
Seat H: 40 cm



**Regatta Lounge Chair Cushion**  
Skagerak Design

1960838\* White / 1960837\* Ash  
1960836\* Charcoal / 1960839\* Marine  
Outdoor Textile / Quickdry Outdoor Foam  
LxWxH: 49x47x5 cm



**Regatta Lounge Bench Cushion**  
Skagerak Design

1960842\* White / 1960841\* Ash  
1960840\* Charcoal / 1960843\* Marine  
Outdoor Textile / Quickdry Outdoor Foam  
LxWxH: 110x49x5 cm



**Regatta Lounge Stool**  
Hans Thyge & Co.

S1508700  
Teak  
WxDxH: 46x50,5x40 cm  
Seat H: 41 cm



**Regatta Lounge Table**  
Hans Thyge & Co.

S1508600  
Teak  
ØxH: 60x45 cm



**Aito Lounge Chair**  
Elisa Honkanen

1560600\*  
Teak FSC™ 100%  
Outdoor Textile / Ash  
Quickdry Outdoor Foam  
WxDxH: 73x80,5x70,5 cm  
Seat H: 40 cm



**Aito Lounge Chair**  
Elisa Honkanen

1560601\*  
Teak FSC™ 100%  
Outdoor Textile / Olive Green  
Quickdry Outdoor Foam  
WxDxH: 73x80,5x70,5 cm  
Seat H: 40 cm



**Square Table**  
Skagerak Design

S1510505  
Teak  
LxWxH: 35x35x30 cm



**Square Table**  
Skagerak Design

S1510510  
Teak  
LxWxH: 46x46x41 cm



**Tradition Spacer Module**

Povl B. Eskildsen

1505921\*

Aluminum / Dark Grey  
Outdoor Textile / Ash  
Quickdry Outdoor Foam  
WxDxH: 76x85x75 cm  
Seat H: 39 cm



**Tradition Corner Module**

Povl B. Eskildsen

1505931\*

Aluminum / Dark Grey  
Outdoor Textile / Ash  
Quickdry Outdoor Foam  
WxDxH: 85x85x75 cm  
Seat H: 39 cm



**Tradition Lounge Chair**

Povl B. Eskildsen

1505941\*

Aluminum / Dark Grey  
Outdoor Textile / Ash  
Quickdry Outdoor Foam  
WxDxH: 95x85x75 cm  
Seat H: 39 cm



**Tradition Spacer & Lounge  
Chair Back Cushion**

Povl B. Eskildsen

1960917\* Ash / 1960662\* Charcoal  
Outdoor Textile / Quickdry Outdoor Foam  
LxWxH: 75x15x40 cm



**Tradition Spacer Module**

Povl B. Eskildsen

1505922\*

Aluminum / Dark Grey  
Outdoor Textile / Charcoal  
Quickdry Outdoor Foam  
WxDxH: 76x85x75 cm  
Seat H: 39 cm



**Tradition Corner Module**

Povl B. Eskildsen

1505932\*

Aluminum / Dark Grey  
Outdoor Textile / Charcoal  
Quickdry Outdoor Foam  
WxDxH: 85x85x75 cm  
Seat H: 39 cm



**Tradition Lounge Chair**

Povl B. Eskildsen

1505942\*

Aluminum / Dark Grey  
Outdoor Textile / Charcoal  
Quickdry Outdoor Foam  
WxDxH: 95x85x75 cm  
Seat H: 39 cm



**Tradition Corner Back  
Cushions**

Povl B. Eskildsen

1960918\* Ash / 1960663\* Charcoal  
Outdoor Textile / Quickdry Outdoor Foam  
LxWxH: 77x15x40 cm



**BETWEEN LINES DECK CHAIR**

Stine Weigelt

1550605

Teak FSC™ 100%  
WxDxH: 61,5x93,5x90 cm  
Seat H: 28 cm



**Tradition Table**

Povl B. Eskildsen

S1505900

Teak FSC™ 100%  
Aluminum / Dark Grey  
LxWxH: 76x76x27 cm



**Tradition Table**

Povl B. Eskildsen

1505902

Teak FSC™ 100%  
Aluminum / Dark Grey  
LxWxH: 76x76x40,5 cm



**Between Lines Deck Stool**

Stine Weigelt

1550615

Teak FSC™ 100%  
WxDxH: 53,5x52,5x28 cm  
Seat H: 28 cm



**Between Lines Deck Chair Cushion**

Stine Weigelt

1960870\* White / 1960869\* Ash  
1960660\* Charcoal / 1960871\* Marine  
Outdoor Textile / Quickdry Outdoor Foam  
LxWxH: 134,5x53,5x3 cm



**Virkelyst Pouf**  
SAYS WHO

1505796\*\*\*/  
Teak  
Outdoor Textile / White  
Fossflakes  
WxDxH: 75x70x42 cm / Seat H: 43 cm



**Virkelyst Chair**  
SAYS WHO

1505736\*\*\*/  
Teak  
Outdoor Textile / White  
Fossflakes  
WxDxH: 75x83x65 cm / Seat H: 43 cm



## VIRKELYST SOFA

SAYS WHO

1505786\*\*\*/  
Teak  
Outdoor Textile / White  
Fossflakes  
WxDxH: 142x83x65 cm / Seat H: 43 cm



**Virkelyst Table**  
SAYS WHO

S1505770  
Teak FSC™ 100%  
LxWxH: 75x70x30 cm



**Virkelyst Table**  
SAYS WHO

S1505753  
Teak  
LxWxH: 113x68x38 cm



**Virkelyst Pouf**  
SAYS WHO

1505791\*\*\*/  
Teak  
Outdoor Textile / Ash  
Fossflakes  
WxDxH: 75x70x42 cm / Seat H: 43 cm



**Virkelyst Chair**  
SAYS WHO

1505731\*\*\*/  
Teak  
Outdoor Textile / Ash  
Fossflakes  
WxDxH: 75x83x65 cm / Seat H: 43 cm



**Virkelyst Sofa**  
SAYS WHO

1505781\*\*\*/  
Teak  
Outdoor Textile / Ash  
Fossflakes  
WxDxH: 142x83x65 cm / Seat H: 43 cm



**Virkelyst Pouf**  
SAYS WHO

1505792\*\*\*/  
Teak  
Outdoor Textile / Charcoal  
Fossflakes  
WxDxH: 75x70x42 cm / Seat H: 43 cm



**Virkelyst Chair**  
SAYS WHO

1505732\*\*\*/  
Teak  
Outdoor Textile / Charcoal  
Fossflakes  
WxDxH: 75x83x65 cm / Seat H: 43 cm



**Virkelyst Sofa**  
SAYS WHO

1505782\*\*\*/  
Teak  
Outdoor Textile / Charcoal  
Fossflakes  
WxDxH: 142x83x65 cm / Seat H: 43 cm



## LISE SUNCHAIR

Lise og Hans Isbrand

1560061  
Hot-dip Galvanized Steel  
Barriere® Acrisol / Dark Blue Stripes  
WxDxH: 69,5x55x69 cm  
Seat H: 35 cm



### Lise Sunchair

Lise og Hans Isbrand

1560063  
Hot-dip Galvanized Steel  
Barriere® Acrisol / Black Stripes  
WxDxH: 69,5x55x69 cm  
Seat H: 35 cm



### Sambito Hammock

Skagerak Design

S1950525\*  
Canvas / White  
WxL: 140x350 cm



### Columbus Sunbed

Skagerak Design

S1390655  
Teak FSC™ 100%  
Sun Texture / White  
WxDxH: 66x200x31 cm  
Seat H: 32,5 cm



### Columbus Sunbed

Skagerak Design

S1390650  
Teak FSC™ 100%  
Sun Texture / Black  
WxDxH: 66x200x31 cm  
Seat H: 32,5 cm



### Riviera Sunbed

Povl B. Eskildsen

S1701515  
Teak  
WxDxH: 73x115x33 cm  
Seat H: 33 cm



### Riviera Lounge

Povl B. Eskildsen

S1701516  
Teak  
WxDxH: 203x67,5x33 cm  
Seat H: 33 cm



### Steamer Deck Chair

Skagerak Design

S15550505  
Teak FSC™ 100%  
WxDxH: 58x163x100 cm  
Seat H: 32,5 cm



### Riviera Cushion

Povl B. Eskildsen

1960846\* White / 1960845\* Ash  
1960844\* Charcoal / 1960847\* Marine  
Outdoor Textile / Quickdry Outdoor Foam  
LxWxH: 221x66x5 cm



### Riviera Lounge Cushion

Povl B. Eskildsen

1960850\* White / 1960849\* Ash  
1960848\* Charcoal / 1960851\* Marine  
Outdoor Textile / Quickdry Outdoor Foam  
LxWxH: 106x93x5 cm



### Deck Chair Cushion

Skagerak Design

1960854\* White / 1960853\* Ash  
1960852\* Charcoal / 1960855\* Marine  
Outdoor Textile / Quickdry Outdoor Foam  
LxWxH: 175x45x3 cm





**Messina Umbrella**  
Skagerak Design

1910101  
Meranti  
Fabric / White  
Ø×H: 210×220 cm / Pole Ø: 3,5 cm  
Recommended Umbrella Foot 30 kg



**Messina Umbrella**  
Skagerak Design

1910111  
Meranti  
Fabric / White  
Ø×H: 270×250 cm / Pole Ø: 3,5 cm  
Recommended Umbrella Foot 30 kg



**Messina Umbrella**  
Skagerak Design

1910135  
Meranti  
Fabric / White  
Ø×H: 300×240 cm / Pole Ø: 4.8 cm  
Recommended Umbrella Foot 50 kg



**Messina Umbrella**  
Skagerak Design

S1910120  
Meranti  
Fabric / White  
W×H: 300×270 cm / Pole Ø: 4,8 cm  
Recommended Umbrella Foot 50 kg



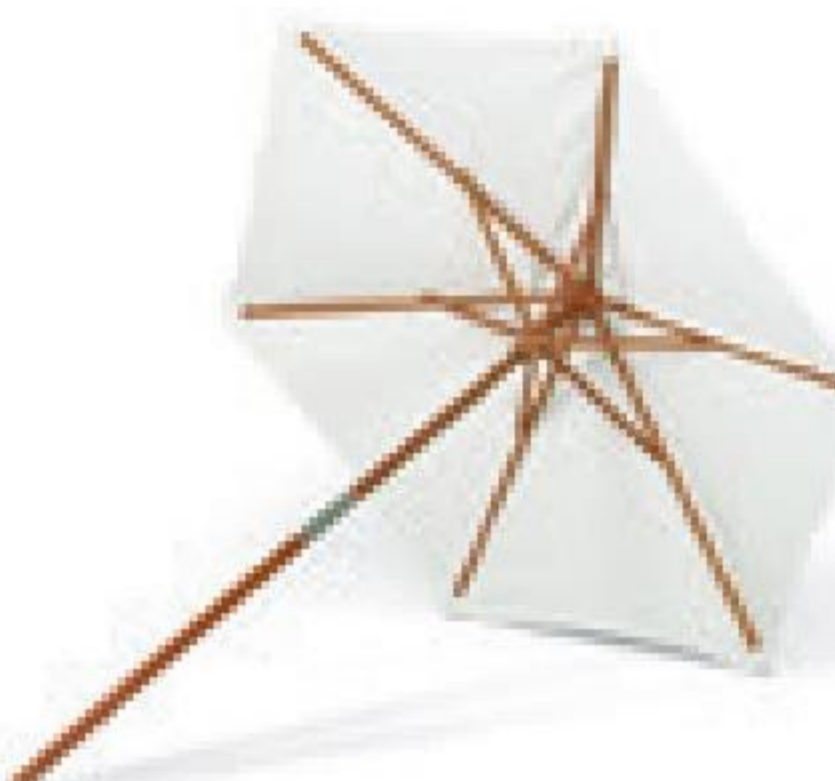
**Atlantis Umbrella**  
Skagerak Design

S1910090  
Meranti  
Fabric / White  
Ø×H: 330×274 cm / Pole Ø: 4,8 cm  
Recommended Umbrella Foot 50 kg



**Atlantis Umbrella**  
Skagerak Design

S1910095  
Meranti  
Fabric / White  
W×H: 330×277 cm / Pole Ø: 4,8 cm  
Recommended Umbrella Foot 50 kg



**Catania Umbrella**  
Skagerak Design

S1910130  
Meranti  
Fabric / White  
Ø×H: 270×250 cm / Pole Ø: 3,8 cm  
Recommended Umbrella Foot 30 kg



**Umbrella Cover**  
Skagerak Design

S1910210  
Plastic / White  
Ø×H: 47×184 cm  
Compatible for Umbrella Ø210, Ø270, Ø330



**Catania Umbrella Foot, 30 kg**  
Skagerak Design

S1910060  
Concrete  
Stainless Steel  
Ø×H: 50×39 / Pole max Ø: 5 cm



**Capri Umbrella Foot, 30 kg**  
Skagerak Design

S1900620  
Concrete  
Stainless Steel  
Ø×H: 50×43 cm / Pole max Ø: 4 cm



**Capri Umbrella Foot, 50 kg**  
Skagerak Design

S1900625  
Concrete  
Stainless Steel  
Ø×H: 60×45 cm / Pole max Ø: 5 cm



**Umbrella Cover**  
Skagerak Design

S1910200  
Plastic / White  
Ø×H: 48×250 cm  
Compatible for Umbrella 300, 330



**Barriere Pillow**  
Skagerak Design

1960862\* White / 1960511\* Ash  
1960512\* Charcoal / 1960865\* Marine  
1960514\* Olive Green  
Outdoor Textile / Fossflakes  
W×L: 50×40 cm



**Barriere Pillow**  
Skagerak Design

1960863\* White / 1960561\* Ash  
1960562\* Charcoal / 1960866\* Marine  
1960564\* Olive Green  
Outdoor Textile / Fossflakes  
W×L: 60×50 cm



**Barriere Pillow**  
Skagerak Design

1960864\* White / 1960571\* Ash  
1960572\* Charcoal / 1960867\* Marine  
1960574\* Olive Green  
Outdoor Textile / Fossflakes  
W×L: 80×50 cm



**Barriere Cushion**  
Skagerak Design

1960858\*/\*\*\* White / 1960857\*/\*\*\* Ash  
1960856\*/\*\*\* Charcoal / 1960859\*/\*\*\* Marine  
Outdoor Textile / Kapok  
W×L: 43×43 cm



## EDGE POT

Stilleben

1810403  
Terracotta  
Glazed  
Ø×H: 35×34 cm



### Edge Pot

Stilleben

1810401  
Terracotta  
Glazed  
Ø×H: 18×18 cm



### Edge Pot

Stilleben

1810402  
Terracotta  
Glazed  
Ø×H: 25×24 cm



### Edge Pot

Stilleben

1810400  
Terracotta  
Glazed  
Ø×H: 38×15 cm



### Edge Pot

Stilleben

1810416  
Terracotta / Light Grey  
Glazed  
Ø×H: 18×18 cm



### Edge Pot

Stilleben

1810415  
Terracotta / Light Grey  
Glazed  
Ø×H: 25×24 cm



### Edge Pot

Stilleben

1810414  
Terracotta / Light Grey  
Glazed  
Ø×H: 35×34 cm



### Edge Pot

Stilleben

1810417  
Terracotta / Light Grey  
Glazed  
Ø×H: 38×15 cm



### Edge Plate

Stilleben

1810480  
Brass  
Ø×H: 18×3 cm



### Edge Plate

Stilleben

1810481  
Brass  
Ø×H: 25×3 cm



### Edge Plate

Stilleben

1810482  
Brass  
Ø×H: 35×3 cm



**Bell Lantern**  
Martin Solem

1830559  
Aluminum / Light Grey  
Stainless Steel / Light Grey  
Glass  
LxWxH: 15,5x17,5x37 cm



**Bell Lantern**  
Martin Solem

1830555  
Aluminum / Light Grey  
Stainless Steel / Light Grey  
Glass  
LxWxH: 25,5x30x55,5 cm



**Bell Lantern**  
Martin Solem

1830560  
Aluminum / Anthracite Black  
Stainless Steel / Anthracite Black  
Glass  
LxWxH: 15,5x17,5x37 cm



**Bell Lantern**  
Martin Solem

1830556  
Aluminum / Anthracite Black  
Stainless Steel / Anthracite Black  
Glass  
LxWxH: 25,5x30x55,5 cm



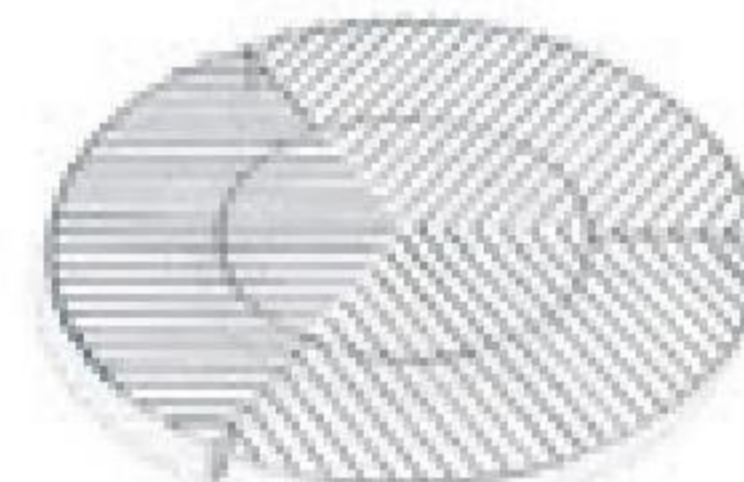
**Bollard Oil Lamp**  
Designit

S1830515  
Teak  
Glass  
Stainless Steel  
ØxH: 12,5x24,5 cm



**Helios Firebowl**  
Skagerak Design

S1810512  
Cast Iron  
ØxH: 58x19 cm



**Helios Steel Grill**  
Skagerak Design

S1810525  
Stainless Steel  
ØxH: 56x4 cm



**Spider Web**  
Anders Brøgger

S1600670  
Teak  
ØxH: 220x180 cm



**Welcome Flag**  
Jakob Kamper

1820631 DK / 1820632 SE / 1820633 NO  
1820634 UK / 1820635 DE  
Teak  
Stainless Steel  
ØxH: 40x160 cm



## BEACH TENNIS

Aurélien Barbry

1994002  
Teak  
Canvas / Dark Green  
Rubber  
LxWxH: 36x24x2,5 cm



**Akiko Petanque**  
Hans Thyge & Co.

S1994000  
Teak  
Chromium-plated Steel  
LxWxH: 28x21x12 cm



**Beach Tennis Balls**  
Skagerak Design

1994002-2 / 3 pcs.  
Rubber  
Ø: 5,5 cm

# MATERIALS/ OUTDOOR

Skagerak uses quality wood. Wood that will stand the test of time and is produced under responsible terms and conditions. We mostly use FSC-certified wood, and we work as ambassadors to help increase the number of certified woods to meet the demand. Skagerak is increasing the share of FSC wood in our products every day in pursuit of our ambitious goal of being 100% FSC-certified across all wood types by 2025.

Did you know that the CO<sup>2</sup> contained by FSC wood remains in the timber, even after it has been turned into furniture and is not released into the atmosphere until it is scrapped? This means that if you keep your furniture for 50 years, the CO<sup>2</sup> is contained within the material the entire time.

Teak Quality teak is commonly found in South East Asia and Central and South America. Our FSC-certified teak comes from Central America and Brazil, while the rest of our teak comes from plantations in Indonesia and Trinidad managed to sustain a renewable and reliable supply of wood. Teak is a heavy, hard and sturdy wood type. The high content of natural oils makes it highly weather- and rot-resistant – perfect for outdoor furniture you want to use outside all year round. If untreated, the teak develops a beautiful silver-grey patina over time.

Lacquered Meranti Wood Skagerak's meranti comes from Indonesia and is a strong, durable type of wood that is the perfect choice for parasol poles. This exotic wood comes in a variety of warm colours that develops very little patina.

Western Red Cedar This wood type is commonly found in western North America. Skagerak's western red cedar comes from Canada and is PEFC-certified, sourced from sustainably managed forests. Western Red Cedar is a good choice for outdoor furniture as the wood is naturally resistant to bugs and insects, mould, decay and bacteria. As the wood ages, it develops a beautiful silver-grey patina

Painted Sapelli Wood Sapelli wood is found throughout Central Africa; ours comes from the Republic of Congo and is FSC-certified, which ensures sustainable forest management. Sapelli's sturdiness and high density makes it an unrivalled choice for painted wood designs. The specially developed paint is applied layer upon layer with intermediate sandings between each step, continuing until the surface is completely smooth. The paint also protects against green growth and discolouring, making for a resilient product suited for outdoor usage all year round.

Powder-coated Steel Steel is a strong, timeless and malleable material enabling designs with thin profiles and various patterns and shapes. To minimize corrosion, the steel is electro-galvanized with

a protective layer of zinc and finally it receives a decorative powder coating – a high-quality dry finishing process that provides a stronger and more streamlined surface than conventional liquid paint.

Powder-coated Aluminum Powder coating is a high-quality dry finishing process that makes it possible to create a thicker and more streamlined surface than with conventional liquid paint. A two-layered coat is applied to the light-weight aluminum to make the material resistant to moisture, UV light, scratches and corrosion.

Compact Laminate High-pressure laminate is made of multiple layers of kraft paper dipped in resin and compressed under heat to form a hard, homogenous sheet. The top and bottom sheets are coloured and impregnated with melamine, which makes the material extremely durable and impact-resistant.

Terracotta Low-fired clay, also known as terracotta, is a beautiful type of earthenware. Skagerak's terracotta is hand-thrown in Portugal, which gives each pot a unique expression. Terracotta means 'baked earth' in Italian, and the pottery technique can be traced back to ancient Greece.

Parasol Fabric Our durable parasol fabric is made from 100% spun polyester. Polyester yarn does not wrinkle or shrink and provides a colour-fast, stain-resistant material. Furthermore, the fabric used in all our umbrellas, except Catania, is Teflon-treated, which makes it water- and dirt-repellent (although it is not entirely waterproof).



**Cura Oil, Nature**  
Skagerak Design

1103043  
Treatment for wood products  
0,5 liter

*When placing untreated wood outside, it will patinate over time and become silver-grey in the end. If you wish to preserve or intensify the original dark/golden/honey brown colour, use Skagerak's natural oil for outdoor furniture. The oil is designed to protect and strengthen wood types such as teak, western red cedar, cherry, and mahogany. As the natural oil saturates and darkens the surface a little, it brings out the natural beauty of the wood and leaves it well-nourished, resistant to water, dirt and grease.*

# PILLOWS & CUSHIONS

Skagerak's outdoor cushions and pillows are made to last – just like the furniture they are designed to accompany, adding comfort to the outdoor space. The outdoor textile is an Oeko-Tex certified, 100% solution-dyed acrylic, which is extremely colour- and light-fast, water- and dirt-repellent and mildew-resistant. For cleaning, wipe the fabric with a firmly wrung cloth. In case of more obstinate stains, remove the upholstery and machine wash at 30° C.

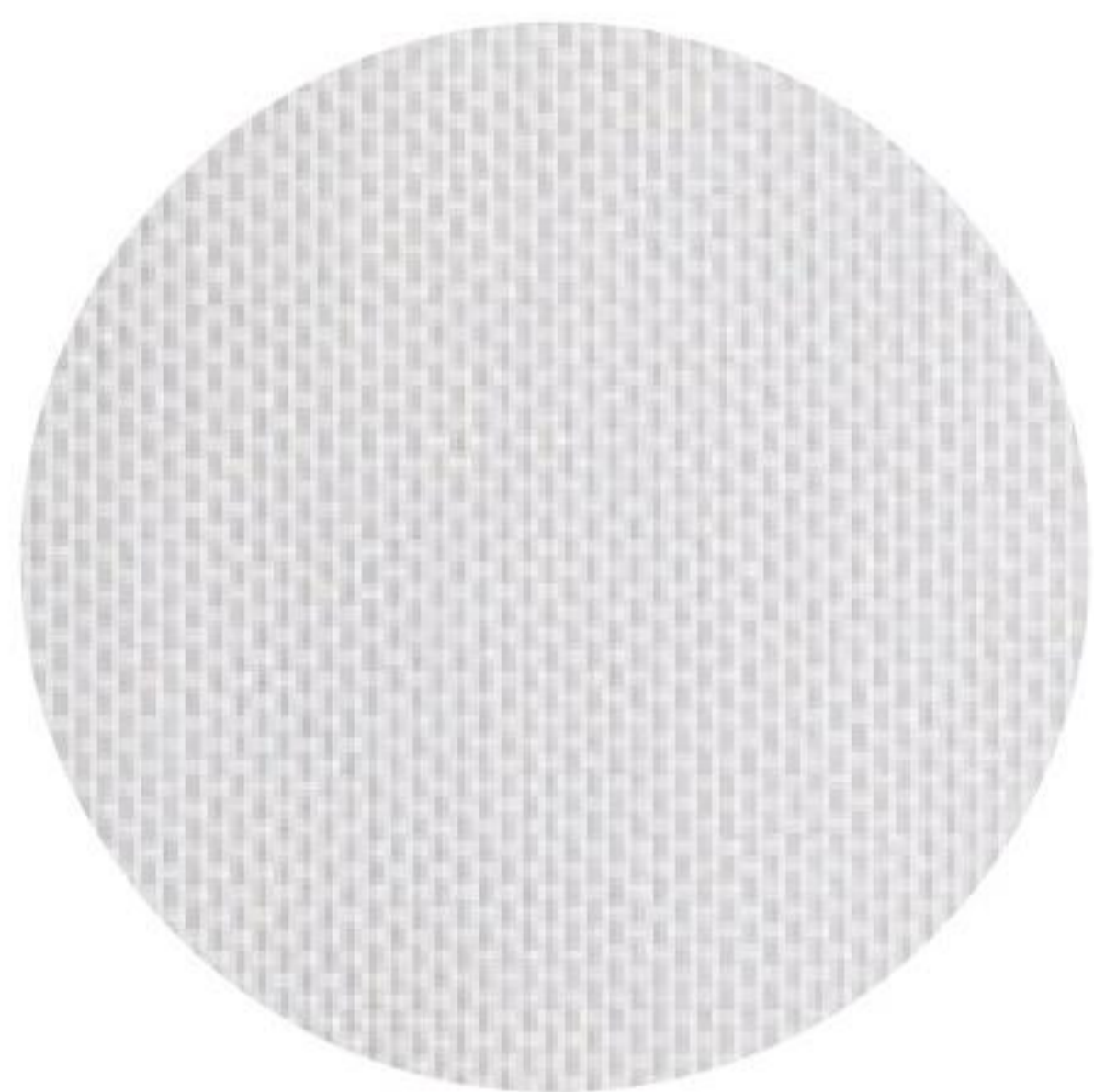
The cushions all have different functions and therefore come in different shapes, textures and sizes. At Skagerak we use three types of fillings: Quickdry Outdoor Foam, Fossflakes and Kapok.

Quickdry Outdoor Foam has an open structure that allows both water and air to pass through. This makes the cushion dry exceptionally quickly – even after being soaking wet. Moreover, the foam provides a firm and comfortable texture that remains the same year after year. We recommend placing the cushions upright for quick drainage. Soon after, the cushion will be dry and the cushion can be used again.

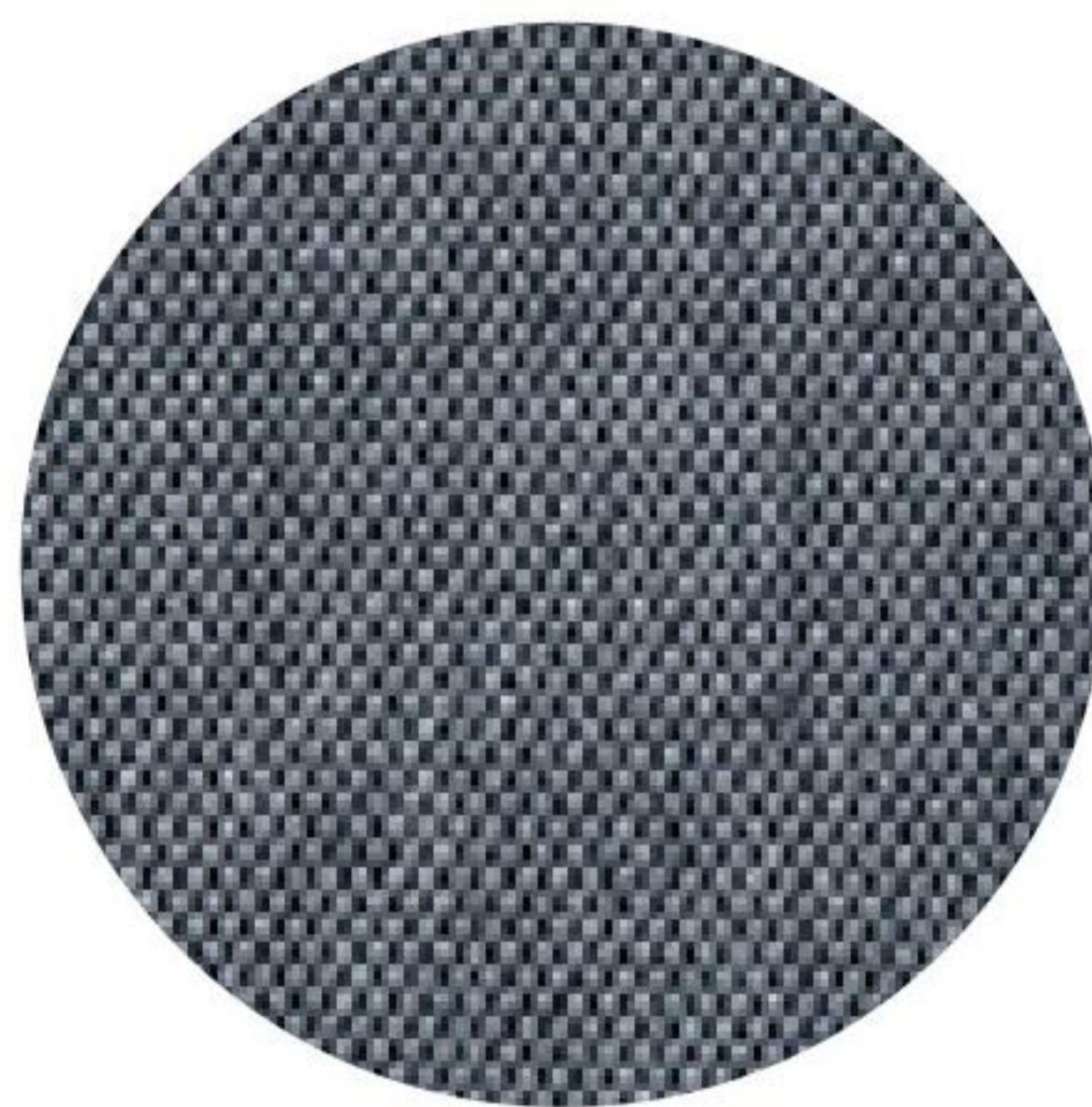
Fossflakes is an allergy-friendly polyethylene known for its superb ability to maintain its volume and shape over time. In addition, Fossflakes provides excellent temperature regulation because the structure of the material allows air to circulate within the cushion.

Kapok is a natural hair-like fibre that is extremely light, water-repellent and hypoallergenic. Our kapok cushions are machine washable at 30° C and should always be tumble-dried at a low temperature to maintain their shape and prevent clumping.

*Important note: Under current UK law, Skagerak is not able to provide outdoor cushions and pillows with the same filling as the regular collection. We still offer cushions and pillows in an outdoor textile with weatherproof properties, but the filling is not weatherproof due to stringent (indoor) fire regulations. We therefore recommend that you bring cushions and pillows indoors in heavy rain and when they are not in use.*



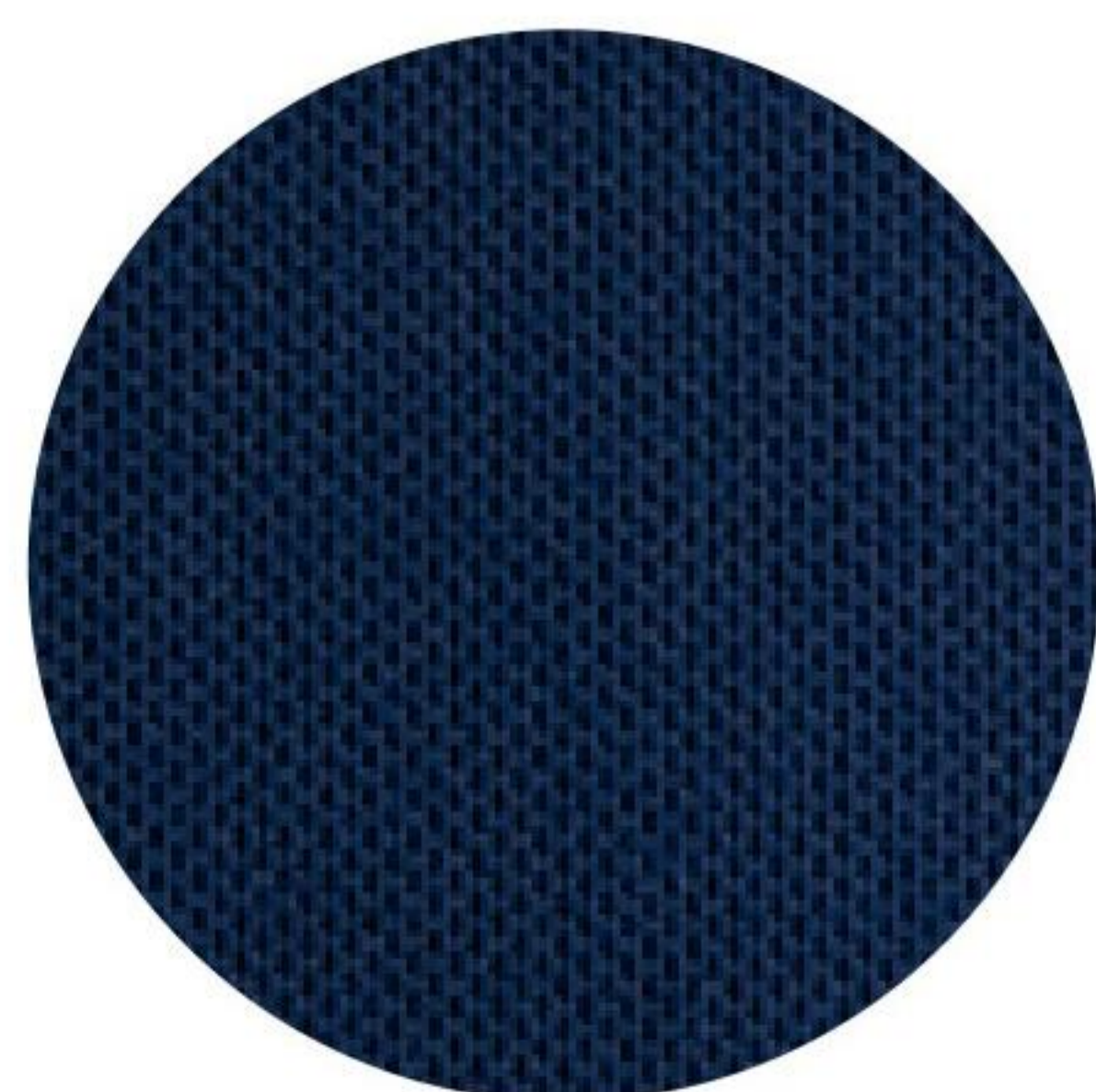
Outdoor Textile  
White



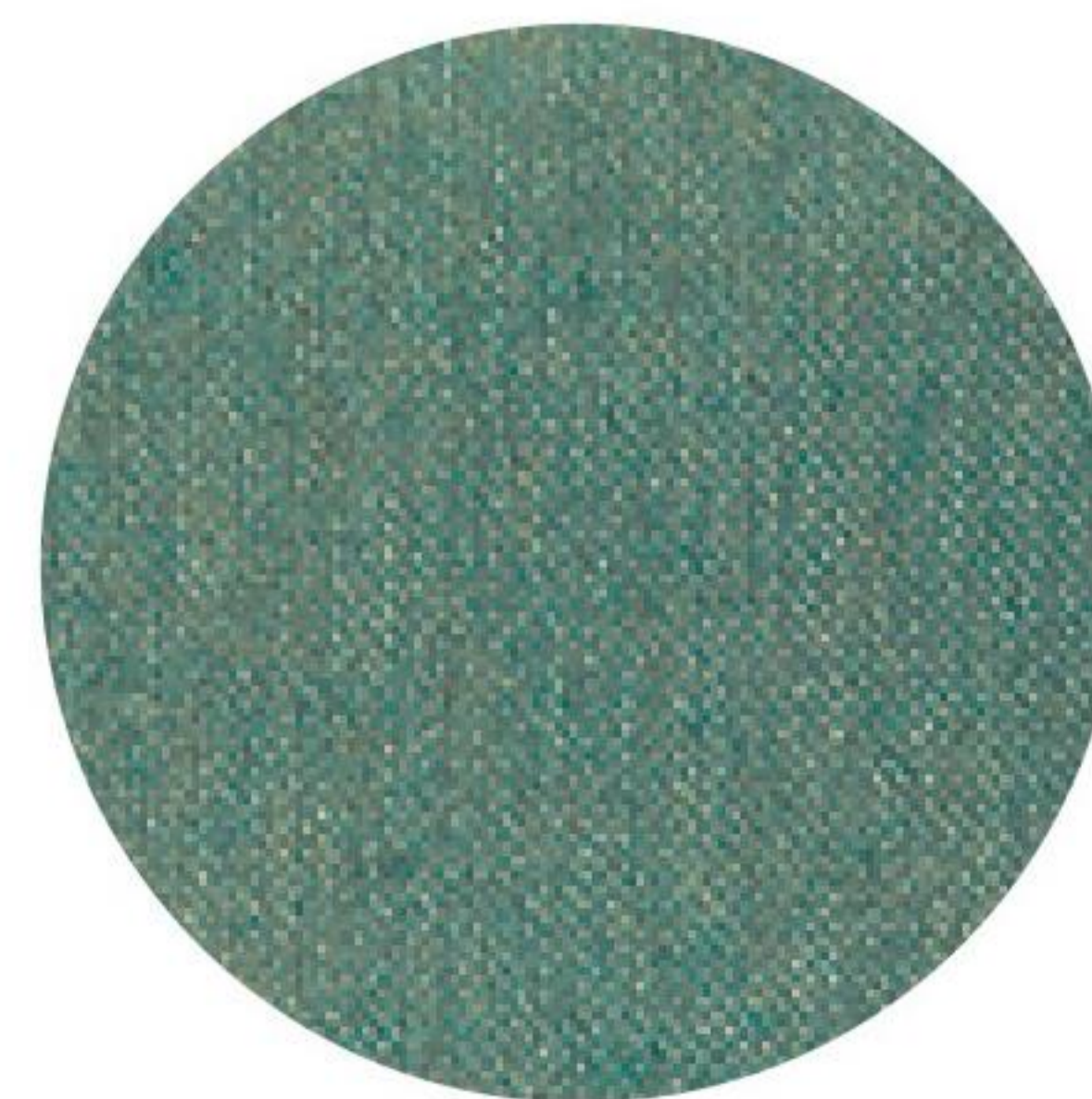
Outdoor Textile  
Ash



Outdoor Textile  
Charcoal



Outdoor Textile  
Marine



Outdoor Textile  
Olive Green



## SKAGERAK OUTDOOR LIVING

Skagerak designers:

Akiko Kuwahata  
All the Way to Paris  
Anders Brøgger  
Anton Björnsing  
Aurélien Barbry  
Bent Krebs  
Bernt Santesson  
Bicolter  
Chris Liljenberg Halstrøm  
Designit  
Ditte Buus Nielsen  
Douglas Ross  
Elisa Honkanen  
Erik Wester  
Included Middle  
Jakob Berg  
Jakob Kamper  
Jens Quistgaard  
John Astbury  
Herman Studio  
Line Depping  
Lise og Hans Isbrand  
Louise Hederström  
Hans Thyge & Co.  
Havnens Snedkeri  
Marie Zachariae  
Martin Solem  
Maximilian Schmahl  
Mette Schelde  
Mia Lagerman  
Mogens Holmriis  
Monique Consentino  
Niels Hvass  
Nina Tolstrup  
Noidoi  
Peter Karpf  
Povl Eskildsen  
Rikke Frost  
Says Who  
Stilleben  
Stine Weigelt  
Søren Refsgaard  
TAF Architects  
Terkel Skou Steffensen  
Thomas Jenkins  
VE2  
Wesley Walters & Salla Luhtasela

This brochure has been printed in compliance with Nordic Swan requirements. The paper is sourced from FSC®-certified forests, also in compliance with Nordic Swan requirements.



\* Separate item number for UK/US. Please note UK may have different filling.

\*\* In UK the cushion for Virkelyst is with foam and will have another visual look.

\*\*\* Not available for UK.

Please visit [skagerak.dk](http://skagerak.dk) to see  
our full collection and to find detailed information  
on our designs.

Join us on facebook, instagram and pinterest!  
Skagerak Denmark