

FRANDSEN

L O V E A T
F I R S T L I G H T



N E W S 2 0 2 4

N E W S 2 0 2 4

I N D E X



THE STORY BEHIND FRANDSEN

P A G E 6 - 7

BALL Ø12 / BENNY FRANDSEN

P A G E 8 - 11

BALL Ø12 - WOOD / BENNY FRANDSEN

P A G E 12 - 15

BALL Ø18 - LIMITED EDITION / BENNY FRANDSEN

P A G E 16 - 19

BALL Ø18 - SOLID / BENNY FRANDSEN

P A G E 20 - 21

BF QUADRO / BENNY FRANDSEN

P A G E 22 - 27

BRIDGE / FRANDSEN CREATIVE LAB

P A G E 28 - 31

BUTTERFLY / TONI RIE

P A G E 32 - 41

FM1954 / FRIIS & MOLTKE

P A G E 42 - 45

FM2014 / FRIIS & MOLTKE

P A G E 46 - 49

GRASP / THOMAS ALBERTSEN

P A G E 50 - 57

ONE - THE LIGHT SOURCE

P A G E 58 - 61

KOI / JONAS BIRKEBAEK POULSEN

P A G E 62 - 65

KOLORIT / JØRGEN KLINKBY

P A G E 66 - 69

PEEL / SISSEL GRAM WARRINGA

P A G E 70 - 77

SATELLITE/ FRIIS & MOLTKE

P A G E 78 - 83

SORA / FUNG & BEDFORD

P A G E 84 - 87

SUPERNATE / JONAS WAGELL

P A G E 88 - 97

T S H E R Y

EST. 1968



T H E M A N B E H I N D F R A N D S E N

It all began in 1968 when the man behind the brand and Frandsen's founder, Benny Frandsen, designed his first lamp. Since then, Frandsen has kept evolving Benny's designs keeping true to his design heritage while striving to make the designs last and inspire for generations and bridging Benny's everlasting classics with new to come.

Frandsen creates decorative, timeless lighting that inspire curiosity and add personality to any space, and with inspiring lighting designs, Frandsen brightens the lives of people everywhere. Rooted in a strong design heritage, Frandsen represents a love of organic, simple and graphic lighting solutions. The products are honest and built to last with sustainability being a vital part of the state of mind.

Frandsen's founder, Benny Frandsen designed his first lamp in 1968. That same year, he designed the iconic Ball pendant and wall lamp, which is still relevant today as Frandsen keeps evolving, expanding and adding new colours to the collection. Benny Frandsen has won numerous international design awards for his lamp designs over the years, and in 2018 he celebrated his 50th anniversary with Frandsen.



B A L L O 1 2
Designed by Benny Frandsen



B A L L Ø 1 2

Ball is a symbol of classic Danish design that successfully has developed and stayed current and loved throughout the years. Created and designed by Benny Frandsen in 1968 the Ball is a diverse and fun series that effectively combines elements of a playful design and clean lines.

The iconic Ball lamp series is extended with a mini edition added to the collection – Ball Ø12. The new mini size is the perfect choice for spaces where just a little light is requested or to hang in clusters of mini Ball lamps.

- M A T T W H I T E
- M A T T B L A C K



A B O U T T H E D E S I G N E R

It all started in 1968 when Benny Frandsen began designing lamps in his basement. That same year, he designed the Ball pendants and magnetic wall lamps, which Frandsen still produce to this day as one of the collection's bestselling series.

Benny Frandsen has won numerous international design awards for his lamp designs over the years and is known for his graphic shapes and inspiring attitude. In 2018, Benny Frandsen celebrated his 50th anniversary.

B A L L O 1 2 W O O D

Designed by Benny Frandsen





B A L L Ø 1 2 W O O D

Introducing the Ball pendant in solid walnut and oak; the latest incarnation of Benny Frandsen's iconic 1968 design masterpiece. The walnut and oak surface awards the Ball with a soft, warm aesthetic, simultaneously ensuring a warm, cosy lighting effect.

Produced using 100% FSC certified leftovers from European wood suppliers, Ball solid walnut and oak reflects Frandsen's commitment to working with more sustainable, circular materials.

- W A L N U T
- O A K



A B O U T T H E D E S I G N E R

It all started in 1968 when Benny Frandsen began designing lamps in his basement. That same year, he designed the Ball pendants and magnetic wall lamps, which Frandsen still produce to this day as one of the collection's bestselling series.

Benny Frandsen has won numerous international design awards for his lamp designs over the years and is known for his graphic shapes and inspiring attitude. In 2018, Benny Frandsen celebrated his 50th anniversary.

B A L L O 1 8
Designed by Benny Frandsen



B A L L Ø 1 8
L I M I T E D E D I T I O N

The new Ball Ø18 is a limited edition collection with a selection of four bold colours
– all chosen to bright up your interior setting.

- L E M O N A D E
- L O U D L I L A C
- B L A Z E D B L U E
- P E A C H Y P O W D E R



A B O U T T H E D E S I G N E R

It all started in 1968 when Benny Frandsen began designing lamps in his basement. That same year, he designed the Ball pendants and magnetic wall lamps, which Frandsen still produce to this day as one of the collection's bestselling series.

Benny Frandsen has won numerous international design awards for his lamp designs over the years and is known for his graphic shapes and inspiring attitude. In 2018, Benny Frandsen celebrated his 50th anniversary.





B A L L Ø 1 8
S O L I D C O P P E R & B R A S S

Frandsen launches an extension to the collection – Ball Ø18 in solid copper and brass. The solid materials combined with the finish adds an exclusive feel to the collection.

- SOLID BRASS
- SOLID COPPER



A B O U T T H E D E S I G N E R

It all started in 1968 when Benny Frandsen began designing lamps in his basement. That same year, he designed the Ball pendants and magnetic wall lamps, which Frandsen still produce to this day as one of the collection's bestselling series.

Benny Frandsen has won numerous international design awards for his lamp designs over the years and is known for his graphic shapes and inspiring attitude. In 2018, Benny Frandsen celebrated his 50th anniversary.



B F Q U A D R O
Designed by Benny Frandsen



B F Q U A D R O T A B L E

BF Quadro is a true piece of 1960s design. A reproduction of Benny Frandsen's first luminaire design, BF Quadro exemplifies Frandsen's now signature approach to design with its combination of functionality and elegance.

The BF Quadro series is produced from metal - a nod to the enduring quality and durability that define Frandsen's design philosophy.

The BF Quadro Table lamp is available in matt black and the dimensions are 11 x 45 x 14 cm.

● M A T T B L A C K



A B O U T T H E D E S I G N E R

It all started in 1968 when Benny Frandsen began designing lamps in his basement. That same year, he designed the Ball pendants and magnetic wall lamps, which Frandsen still produce to this day as one of the collection's bestselling series.

Benny Frandsen has won numerous international design awards for his lamp designs over the years and is known for his graphic shapes and inspiring attitude. In 2018, Benny Frandsen celebrated his 50th anniversary.





B F Q U A D R O W A L L

BF Quadro is a true piece of 1960s design. A reproduction of Benny Frandsen's first luminaire design, BF Quadro exemplifies Frandsen's now signature approach to design with its combination of functionality and elegance.

The BF Quadro series is produced from metal - a nod to the enduring quality and durability that define Frandsen's design philosophy.

The BF Quadro Table lamp is available in matt black and the dimensions are 14 x 14 x 21 cm.

● M A T T B L A C K



A B O U T T H E D E S I G N E R

It all started in 1968 when Benny Frandsen began designing lamps in his basement. That same year, he designed the Ball pendants and magnetic wall lamps, which Frandsen still produce to this day as one of the collection's bestselling series.

Benny Frandsen has won numerous international design awards for his lamp designs over the years and is known for his graphic shapes and inspiring attitude. In 2018, Benny Frandsen celebrated his 50th anniversary.



B R I D G E
Designed by Frandsen Creative Lab



BRIDGE

Bridge pendant is designed in a simple design, which adds a linear sculpture above a table. The pendant is designed by Frandsen and is mounted in almost invisible lines.

Bridge is available in black and the dimensions are 150 x 9 x 5,2 cm.

● BLACK



ABOUT THE DESIGNER

At Frandsen Creative Lab, the competencies are spanning wide. From drawing designs which fit a design brief and a specific interior, to engineered solutions that can be scaled up and down in quantities.

When collaborating with Frandsen Creative Lab, the development process of the lighting request is never overseen and the drawing is followed to the final product.

Whether you need lighting designs, have a concept and a specific design in mind, or want to use some of the standard products with new colours and tweaks, you are always welcome to contact Frandsen Creative Lab with your project and ideas.





B U T T E R F L Y
Designed by Toni Riccetti



BUTTERFLY WALL LAMP

Adding a new member to the Butterfly collection, the Butterfly Wall Lamp is an elegant and stylish wall lamp designed with excitement for the Nordic design language. The warm Brass finish is added to the collection and is available in two pendants, a table lamp, a floor lamp and a wall lamp. The Brass finish gives the lamp a timeless and eye-catching look while maintaining the exclusive feel to it.

Butterfly consists of three half domes presented in reverse ways. The spherical shapes of the half domes create an interplay between the round lines of the lamp. The top dome is fitted with discreet holes to make the soft light spread upwards.

The Butterfly Wall Lamp is available in the dimensions are 21 x 48 x 32 cm.

- CHROME
- BRASS
- MATT TANGREY



ABOUT THE DESIGNER

Since 2013, Toni Rie has designed numerous lighting for Frandsen. Her designs vary from strong geometric and modern designs to more organic and atmospheric designs. Drawing from inspiration all over the world, Toni's designs are timeless and features an exciting and curious approach to modern design.





BUTTERFLY PENDANT

Ø 21 / Ø 29

Butterfly consists of three half domes presented in reverse ways. The spherical shapes of the half domes create an interplay between the round lines of the lamp. The top dome is fitted with discreet holes to make the soft light spread upwards, while the dim surface of the bottom dome sheds an atmospheric and evocative mellow light making Butterfly a great lighting for a variety of settings.

You find an array of colours to the Butterfly lamp, all inspired by natural materials and an excitement for the Nordic design language. We are inspired by the colours of leaves on trees and reeds on a lake side and the colours are slightly dusty thus giving the pendants a soft and inviting look. The Butterfly pendant is an ideal fit for most dining or kitchen spaces – and also works well in a work setting or other professional environment.

- CHROME
- BRASS
- PALE GREEN MATT
- STEEL BLUE MATT
- MATT RED
- MATT TAN GREY
- MATT GREEN



ABOUT THE DESIGNER

Since 2013, Toni Rie has designed numerous lighting for Frandsen. Her designs vary from strong geometric and modern designs to more organic and atmospheric designs. Drawing from inspiration all over the world, Toni's designs are timeless and features an exciting and curious approach to modern design.



BUTTERFLY FLOOR LAMP

Butterfly consists of three half domes presented in reverse ways. The spherical shapes of the half domes create an interplay between the round lines of the lamp. The top dome is fitted with discreet holes to make the soft light spread upwards.

You find an array of colours to the Butterfly lamp, all inspired by natural materials and an excitement for the Nordic design language. We are inspired by the colours of leaves on trees and reeds on a lake side and the colours are slightly dusty thus giving the pendants a soft and inviting look. The floor lamp can be directed in whatever way light is needed making the floor lamp functional and usable both next to the bed, in a reading corner or in the living room.

The Butterfly Floor Lamp is available in the dimensions are 25 x 135 x 25 cm.

- CHROME
- BRASS
- PALE GREEN MATT
- MATT TAN GREY
- MATT BLUE STEEL



ABOUT THE DESIGNER

Since 2013, Toni Rie has designed numerous lighting for Frandsen. Her designs vary from strong geometric and modern designs to more organic and atmospheric designs. Drawing from inspiration all over the world, Toni's designs are timeless and features an exciting and curious approach to modern design.





BUTTERFLY TABLE LAMP

The Butterfly Table Lamp consists of three half domes presented in reverse ways. The spherical shapes of the half domes create an interplay between the round lines of the lamp. The top dome is fitted with discreet holes to make the soft light spread upwards.

You find an array of colours to the Butterfly Table Lamp, all inspired by natural materials and an excitement for the Nordic design language. We are inspired by the colours of leaves on trees and reeds on a lake side and the colours are slightly dusty thus giving the pendants a soft and inviting look. The Butterfly table lamp features a perfectly sized shade that moves side to side and up/down allowing you to point the light wherever you need it. Great as a reading light for the bedside table, dresser or desk.

The Butterfly Table Lamp is available in the dimensions are 21 x 40 x 21 cm.

- CHROME
- BRASS
- PALE GREEN MATT
- MATT TAN GREY
- MATT BLUE STEEL



ABOUT THE DESIGNER

Since 2013, Toni Rie has designed numerous lighting for Frandsen. Her designs vary from strong geometric and modern designs to more organic and atmospheric designs. Drawing from inspiration all over the world, Toni's designs are timeless and features an exciting and curious approach to modern design.

F M 1 9 5 4
Designed by Friis & Moltke



F M 1 9 5 4 V E N E E R

Ø 1 6 / Ø 2 8 / Ø 4 1

Designed by Friis & Moltke in 1954, the FM1954 pendant is a masterclass in minimal design. Complementing its clean, round lines are two new FSC certified walnut and oak veneer finishes, which succeed in awarding the timeless design with a warmer, more natural aesthetic.

Thanks to the unique characteristics and pattern of the natural veneer finish, each pendant is awarded with its very own sculptural character.

- W A L N U T
- O A K



A B O U T T H E D E S I G N E R S

Knud Friis (1926-2010) and Elmar Moltke Nielsen (1924-1997) founded Friis & Moltke in 1954. In the 1960s they introduced Danes to their mild version of Brutalism, which often featured huge, robust building structures tucked into the landscape, raw concrete walls and visible technical installations.

Knud Friis and Elmar Moltke Nielsen had a unique creative partnership and their groundbreaking projects both in Denmark and abroad made a decisive impact on Danish architecture.

The two partners worked together on virtually all the buildings, in which their joint practice was involved.



F M 2 0 1 4
Designed by Friis & Moltke





FM 2014

The FM2014 pendant in polished and brushed stainless steel and brass adds a simple and timeless expression to the interior.

Introduced in 2014, the FM2014 pendant builds on the design cues from its predecessor, the FM1954, with focus on simplicity and functionality in a very slender and elegant profile.

The FM2014 is available in two sizes, Ø5,5xH24 cm and Ø5,5xH36 cm, and come in a variety of colours and finishes. Available in polished and brushed stainless steel and brass, and in structured matt lacquered finishes, the pendants add a different look and feel to the interior setting, depending on the chosen finish.

- SOLID BRASS POLISHED
- SOLID BRASS GLOSSY
- STAINLESS STEEL GLOSSY
- STAINLESS STEEL POLISHED



ABOUT THE DESIGNERS

Knud Friis (1926-2010) and Elmar Moltke Nielsen (1924-1997) founded Friis & Moltke in 1954. In the 1960s they introduced Danes to their mild version of Brutalism, which often featured huge, robust building structures tucked into the landscape, raw concrete walls and visible technical installations. Knud Friis and Elmar Moltke Nielsen had a unique creative partnership and their groundbreaking projects both in Denmark and abroad made a decisive impact on Danish architecture.

The two partners worked together on virtually all the buildings, in which their joint practice was involved.



G R A S P
Designed by Thomas Albertsen



GRASP WALL

Introducing Thomas Albertsen's design - Grasp Wall. Available in matt white, matt black, matt petrol, matt beetroot & solid brass, Grasp Wall borrows the distinctive look of the Grasp pendant lampshade to create a contemporary twist on a classic look, providing cosy wall illumination for interior spaces.

The Grasp Wall Lamp is available in the dimensions 15 x 7,10 x 16,50 cm.

- MATT WHITE
- MATT PETROLEUM
- MATT BEETROOT
- MATT BLACK
- SOLID BRASS



ABOUT THE DESIGNER

Thomas Albertsen has designed the portable lamp, Grasp, which became a runner up for the Danish TV show 'Denmark's Next Classic'. Thomas was chosen as the winner for the 2023 edition of the program for his designs.

He was educated from the Danish Design Academy in 2007 and has worked as a designer ever since. His lighting designs focus on good light and forms that are simple, yet interesting and special.





Portable lamp made for indoor/outdoor use. With brand new light source technology the lamp is charged from the light source itself.

G R A S P P O R T A B L E

In the realm of Danish lighting design, where function reigns supreme, Thomas Albertsen's Grasp emerges as a striking masterpiece. Transforming any setting into a sanctuary of cozy and intimate illumination, this all-weather portable lamp blends Scandinavian innovation with timeless elegance, drawing inspiration from traditional pendant luminaires.

The Grasp Portable is available in 2 sizes: 15 x 47 x 29,50 cm and 15 x 72 x 32,5 cm.

- M A T T W H I T E
- M A T T P E T R O L E U M
- M A T T B E E T R O O T
- M A T T B L A C K
- S O L I D B R A S S



A B O U T T H E D E S I G N E R

Thomas Albertsen has designed the portable lamp, Grasp, which became a runner up for the Danish TV show 'Denmark's Next Classic'. Thomas was chosen as the winner for the 2023 edition of the program for his designs.

He was educated from the Danish Design Academy in 2007 and has worked as a designer ever since. His lighting designs focus on good light and forms that are simple, yet interesting and special.



GRASP GARDEN SPEAR

Grasp Garden Spear is designed for both indoor and outdoor use, featuring two captivating colour choices, brass and black. These options add a visually appealing touch to garden areas, providing a warm yet unmistakable Danish twist to any outdoor setting.

The Grasp Garden Spear is available in the dimensions 15,6 x 82,2 x 17 cm.

- MATT BLACK
- SOLID BRASS



ABOUT THE DESIGNER

Thomas Albertsen has designed the portable lamp, Grasp, which became a runner up for the Danish TV show 'Denmark's Next Classic'. Thomas was chosen as the winner for the 2023 edition of the program for his designs.

He was educated from the Danish Design Academy in 2007 and has worked as a designer ever since. His lighting designs focus on good light and forms that are simple, yet interesting and special.





O N E
Light source

*Introducing
One
- a revolution in
portable lighting
technology*



I N T R O D U C I N G O N E
- a revolution in portable lighting technology.

Unlike traditional battery-operated portable lights that require the entire unit to be recharged, the One takes a giant leap forward with its interchangeable and rechargeable LED light source.

The brilliance of One lies in its simplicity: remove the One light source from the host luminaire, and effortlessly attach a replacement One light source while the unit is put on charge. The result: uninterrupted portable lighting without disruption.

The One is not just about convenience; it's a game-changer in illumination. With its three-stage dimmable LED light source, the brightness can be tailored to create the perfect ambiance for any space: whether it's a warm and cosy evening glow or intense, focused lighting for work.

Setting the One apart is its remarkable 12-hour operational capacity at maximum light output. From a single charge, the One ensures uninterrupted illumination day and night, making it an ideal companion for all manner of situations at home - or outdoors.

One is available in the dimensions 9 x 5,5 x 9 cm.

K O I

Designed by Jonas Birkebaek Poulsen





K O I
 Ø 1 9 / Ø 2 5 / Ø 3 2

Koi is an exquisite design lamp that seamlessly blends the elegance of Japanese traditional hairstyles with the simplicity and functionality of Scandinavian minimalism. Drawing inspiration from the rich cultural heritage of both Japan and Scandinavia, Koi creates a unique and captivating lighting experience.

The lamp's name, Koi, is derived from the Japanese word "koy" meaning "elegance" or "gracefulness." It perfectly encapsulates the essence of this exceptional lighting fixture, which exudes a sense of refined beauty and harmony.

○ OPAL WHITE / BLACK STICKS
 ● OPAL ROSE / BRASS STICKS



A B O U T T H E D E S I G N E R

Danish designer, Jonas Birkebaek Poulsen has been interested in creating and designing since childhood, which has resulted in a curious approach and a strong creative approach to design.

Jonas graduated with a Master degree in industrial design from the Danish design-school Kolding in 2012. Good design is a design that people remember and fall in love with. Something that is part of a bigger story and that will be cherished for years.

When working with lighting, Jonas finds the balance between functionality and aesthetics fascinating.



K O L O R I T
Designed by Jørgen Klinkby





K O L O R I T
Ø 2 0 / Ø 3 4

Kolorit is designed by Jørgen Klinkby and is a functional lamp, which reflects and bends the light beautifully. The center cylinder points the light towards the surface, and the center piece in chrome adds a double reflection of both the light and the surroundings.

Kolorit comes in three different colours, matt white, matt black and bubblegum and in the dimensions Ø20 and Ø34 cm. All colours add a different dimension to the lamp – from bright light with the white colour, a soft light with the bubblegum colour and an ambient feel with the black colour. Hang Kolorit alone over the kitchen island or dining table - or in a cluster in the corner of the living room.

- M A T T W H I T E
- B U B B L E G U M
- M A T T B L A C K



A B O U T T H E D E S I G N E R

Jørgen Klinkby is the designer behind the Kolorit series in the Frandsen collection. Jørgen has a graduate from the Royal Danish Academy and has previously worked as an architect at Arne Jacobsen's drawing office.

Jørgen's design have clear functional- and constructional ideas, which unites in an easy-to-understand whole and leaves nothing untold.



P E E L
Designed by Sissel Gram Warringa





P E E L P E N D A N T

Unveiling Peel, the stainless steel luminaire by Dutch-Danish designer Sissel Gram Warringa, meticulously crafted for a surprisingly soft, diffused lighting effect. The Peel pendant is an ideal fit for most dining or kitchen spaces – and also works well in a work setting or other professional environment.

The Peel Pendant is available in the dimensions 39 x 25 x 26,50 cm.

● BRUSHED STAINLESS STEEL



A B O U T T H E D E S I G N E R

With a string of prestigious achievements to her name, product designer Sissel Gram Warringa is emerging as a leading figure in the world of design.

After complimenting her formal education with a Carpentry Foundation programme at KTS in Copenhagen, Denmark, in 2016, Sissel graduated with a First Class BA (Hons) in Product & Furniture Design from the prestigious Kingston School of Art in London in 2020.





PEEL TABLE

Unveiling Peel, the stainless steel luminaire by Dutch-Danish designer Sissel Gram Warringa, meticulously crafted for a surprisingly soft, diffused lighting effect. The Table lamp is an ideal desk lamp for the home or office, but will also make an impression in the windowsill or as a bedside light.

The Peel Table is available in the dimensions 26,50 x 28 x 27,50 cm.

● BRUSHED STAINLESS STEEL



ABOUT THE DESIGNER

With a string of prestigious achievements to her name, product designer Sissel Gram Warringa is emerging as a leading figure in the world of design.

After complimenting her formal education with a Carpentry Foundation programme at KTS in Copenhagen, Denmark, in 2016, Sissel graduated with a First Class BA (Hons) in Product & Furniture Design from the prestigious Kingston School of Art in London in 2020.



PEEL WALL

Unveiling Peel, the stainless steel luminaire by Dutch-Danish designer Sissel Gram Warringa, meticulously crafted for a surprisingly soft, diffused lighting effect. The wall lamp can be placed in a variety of settings ranging from the bed side, a reading corner, the bathroom or wherever great light is needed.

The Peel Wall is available in the dimensions 26,50 x 28 x 27,50 cm.

● BRUSHED STAINLESS STEEL



ABOUT THE DESIGNER

With a string of prestigious achievements to her name, product designer Sissel Gram Warringa is emerging as a leading figure in the world of design.

After complimenting her formal education with a Carpentry Foundation programme at KTS in Copenhagen, Denmark, in 2016, Sissel graduated with a First Class BA (Hons) in Product & Furniture Design from the prestigious Kingston School of Art in London in 2020.





S A T E L L I T E
Designed by Friis & Moltke



SATELLITE PENDANT

Ø 7

The Satellite lamp was designed by Danish design studio Friis & Moltke in 2017.

Satellite's clean lines and pulver coated aluminium construction create an eye-catching and distinctive silhouette, rendering this iconic luminaire the perfect addition to the home, living room or even the bedside.

The pendant is the perfect choice for spaces where just a little light is requested or to hang in clusters of Satellite lamps.

● MATT BLACK



ABOUT THE DESIGNERS

Knud Friis (1926-2010) and Elmar Moltke Nielsen (1924-1997) founded Friis & Moltke in 1954. In the 1960s they introduced Danes to their mild version of Brutalism, which often featured huge, robust building structures tucked into the landscape, raw concrete walls and visible technical installations.

Knud Friis and Elmar Moltke Nielsen had a unique creative partnership and their groundbreaking projects both in Denmark and abroad made a decisive impact on Danish architecture.

The two partners worked together on virtually all the buildings, in which their joint practice was involved.





S A T E L L I T E W A L L

Experience the essence of Danish mid-century design with Friis & Moltke's Satellite lamp, a characterful luminaire with rotatable lamp shade and dimmer. It can be placed in a variety of settings ranging from the bed side, a reading corner, the bathroom or wherever great light is needed.

The Satellite Wall is available in the dimensions 7 x 42 x 47 cm.

● M A T T B L A C K



A B O U T T H E D E S I G N E R S

Knud Friis (1926-2010) and Elmar Moltke Nielsen (1924-1997) founded Friis & Moltke in 1954. In the 1960s they introduced Danes to their mild version of Brutalism, which often featured huge, robust building structures tucked into the landscape, raw concrete walls and visible technical installations.

Knud Friis and Elmar Moltke Nielsen had a unique creative partnership and their groundbreaking projects both in Denmark and abroad made a decisive impact on Danish architecture.

The two partners worked together on virtually all the buildings, in which their joint practice was involved.



S O R A
Designed by Fung + Bedford



S O R A

Sora is a handmade, sculptural luminaire designed by UK-based duo Fung + Bedford. Using traditional Japanese origami techniques to create its unique, floating form and diffused luminous glow, Sora exudes an ethereal, lucid aura. The Sora lamp is an ideal fit for most dining or kitchen spaces – and also works well in a work setting or other professional environment.

The Sora lamp is available in the dimensions 124 x 24,6 x 74 cm.

○ SOLID BRASS / WHITE



A B O U T T H E D E S I G N E R S

Enter the world of visionary design practitioners, Fung & Bedford - a Sussex, UK-based duo seamlessly blending architecture and design with the delicate finesse of origami folding techniques.

At the heart of Fung & Bedford's distinctive practice lies the mastery of origami and their beloved Tyvek paper: a 100% recyclable, waterproof, tear proof and sustainable man-made material that bestows their 'architectural origami' creations with a precise yet poetic character.



S U P E R N A T E
Designed by Jonas Wagell





S U P E R N A T E P E N D A N T
Ø 1 3 . 3 / Ø 2 8 / Ø 3 8

Suspernate is designed by Jonas Wagell and is a collection of opal white globes with a warm and unobtrusive form. The design has a strong character with simple and friendly volumes which is suitable for many different spaces and settings. The clever and quirky construction enable multiple applications and variations with little or no modification of the product.

○ O P A L W H I T E / B L A C K



A B O U T T H E D E S I G N E R

Born in 1973, Jonas Wagell is a distinguished Swedish architect, designer and artist with a career spanning the disciplines of architecture, product design and furniture design.

While Jonas's early career was largely characterised by his now infamous architectural designs, his current focus lies primarily within the realm of product and furniture design, sometimes also extending to art and design direction.

One of his early career milestones was the iconic Mini House prefab house concept from 2007, which garnered Jonas the accolade of appearing as one of the "world's 50 hottest young architects" by Wallpaper* Magazine in 2008.

Since then, Jonas has collaborated with countless design firms such as Tachhini, Menu and Wendelbo - in the process crafting a number of revered modern classics which utilise minimal forms and soft, harmonious shapes.





S U P E R N A T E C E I L I N G L I G H T

Ø 2 8 / Ø 3 8

Harbouring Jonas Wagell's trademark blend of functionality and simplicity, the Supernate ceiling luminaire is an elegant addition to those spaces where a characterful statement piece is required.

Thanks to Supernate's opal glass shade, which succeeds in creating a warm and inviting glow, cosy ambiance is guaranteed.

○ O P A L W H I T E / B L A C K



A B O U T T H E D E S I G N E R

Born in 1973, Jonas Wagell is a distinguished Swedish architect, designer and artist with a career spanning the disciplines of architecture, product design and furniture design.

While Jonas's early career was largely characterised by his now infamous architectural designs, his current focus lies primarily within the realm of product and furniture design, sometimes also extending to art and design direction.

One of his early career milestones was the iconic Mini House prefab house concept from 2007, which garnered Jonas the accolade of appearing as one of the "world's 50 hottest young architects" by Wallpaper* Magazine in 2008.

Since then, Jonas has collaborated with countless design firms such as Tachhini, Menu and Wendelbo - in the process crafting a number of revered modern classics which utilise minimal forms and soft, harmonious shapes.



S U P E R N A T E W A L L L A M P

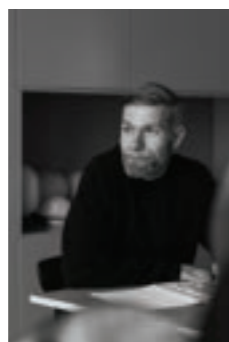
Ø 2 8 / Ø 3 8

Harbouring Jonas Wagell's trademark blend of functionality and simplicity, the Supernate wall variant has been designed to create a characterful, elegant addition to wall spaces.

The low profile of the luminaire is ideally suited as a wall fixture, with the form of the opal glass shade itself providing a dynamic visual perception from a variety of viewing angles.

Supernate wall emits a warm and inviting glow, creating a cosy ambience for those seeking a characterful statement piece for the home or office.

○ O P A L W H I T E / B L A C K



A B O U T T H E D E S I G N E R

Born in 1973, Jonas Wagell is a distinguished Swedish architect, designer and artist with a career spanning the disciplines of architecture, product design and furniture design.

While Jonas's early career was largely characterised by his now infamous architectural designs, his current focus lies primarily within the realm of product and furniture design, sometimes also extending to art and design direction.

One of his early career milestones was the iconic Mini House prefab house concept from 2007, which garnered Jonas the accolade of appearing as one of the "world's 50 hottest young architects" by Wallpaper* Magazine in 2008.

Since then, Jonas has collaborated with countless design firms such as Tachhini, Menu and Wendelbo - in the process crafting a number of revered modern classics which utilise minimal forms and soft, harmonious shapes.





S U P E R N A T E T A B L E L A M P
Ø 2 8 / Ø 3 8

Harbouring Jonas Wagell's trademark blend of functionality and simplicity, the Supernate table lamp provides an elegant accompaniment to a variety of interior scenarios.

Available in three different sizes, the opal white globe emits a warm and inviting glow, creating a cosy ambiance for those seeking a characterful statement piece.

○ O P A L W H I T E / B L A C K



A B O U T T H E D E S I G N E R

Born in 1973, Jonas Wagell is a distinguished Swedish architect, designer and artist with a career spanning the disciplines of architecture, product design and furniture design.

While Jonas's early career was largely characterised by his now infamous architectural designs, his current focus lies primarily within the realm of product and furniture design, sometimes also extending to art and design direction.

One of his early career milestones was the iconic Mini House prefab house concept from 2007, which garnered Jonas the accolade of appearing as one of the "world's 50 hottest young architects" by Wallpaper* Magazine in 2008.

Since then, Jonas has collaborated with countless design firms such as Tachhini, Menu and Wendelbo - in the process crafting a number of revered modern classics which utilise minimal forms and soft, harmonious shapes.

L O V E A T
F I R S T L I G H T



FRANDSEN

Egeskovej 29 / Horsens, DK - 8700
info@frandsen.com / +45 76 58 18 18