

## Beech wood finishes / Wybarwienia drewna bukowego

### standard finish / wykończenie standardowe



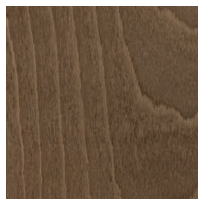
**(01)**  
Natural beech  
Buk naturalny



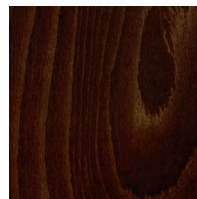
**(02)**  
Honey  
Miodowy



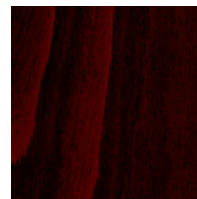
**(06)**  
Rustical  
Rustykalny



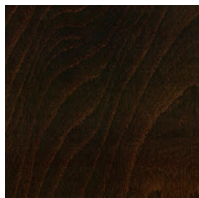
**(07)**  
Milky walnut  
Orzech mleczny



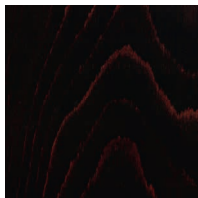
**(04)**  
Walnut  
Orzech



**(05)**  
Cognac  
Koniak



**(08)**  
Dark walnut  
Orzech ciemny



**(09)**  
Wenge  
Wenge



**(10)**  
Black stain  
Czarna bejca

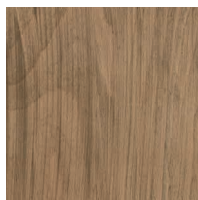
### premium finish / wykończenie premium



**(03)**  
White washed  
Biały sprany



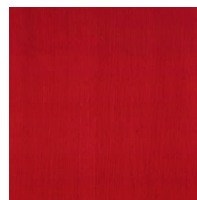
**(29)**  
Antique white  
Biały antyczny



**(15)**  
Antique oil  
Olej antyczny



**(13)**  
Yellow stain  
Żółta bejca



**(14)**  
Red stain  
Czerwona bejca



**(12)**  
Green stain  
Zielona bejca



**(11)**  
Grey stain  
Szara bejca



**(16)**  
White  
Biały



**(21)**  
Light green  
Zielony jasny



**(22)**  
Dark green  
Zielony ciemny



**(23)**  
Burgundy  
Bordowy



**(19)**  
Light blue  
Niebieski jasny



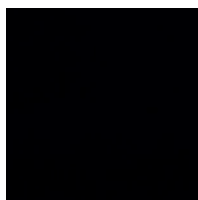
**(20)**  
Dark blue  
Niebieski ciemny



**(17)**  
Light grey  
Szary jasny



**(18)**  
Dark grey  
Szary ciemny



**(24)**  
Black  
Czarny

## Oak wood finishes / Wybarwienia drewna dębowego

standard finish / wykończenie standardowe



**(26)**  
Bleached oak  
Dąb bielony



**(25)**  
Natural oak  
Dąb naturalny



**(27)**  
Milky oak  
Dąb mleczny

premium finish / wykończenie premium



**(37)**  
Antique oil oak  
Dąb olej antyczny



**(35)**  
White oak  
Dąb biały



**(36)**  
Black oak  
Dąb czarny

## Other wood finishes / Pozostałe wybarwienia



**(28)**  
Bleached ash  
Jesion bielony



**(34)**  
Accacia\*  
Akacja\*

\*Refers to outdoor furniture (GA-4 and GST-4)  
\*Dotyczy mebli ogrodowych (GA-4 i GST-4)

## Embossed seat patterns / Relief



Rjs



No 5



No 7



No 12\_1/2



No 1



No 29



No 224



No 23

## Etna / Inari / Monet group A / upholstery / tapicerka



## Vintage / Dolaro group A / upholstery / tapicerka



## Braveheart group B / upholstery / tapicerka



Braveheart 21 Gold



Braveheart 24 Sunset



Braveheart 29 Damson



Braveheart 03 Teal



Braveheart 07 Limestone



Braveheart 26 Cardinal



Braveheart 01 Spruce



Braveheart 10 Shadow



Braveheart 33 Navy



Braveheart 11 Charcoal



Braveheart 34 Onyx

---

## Chopper group B / upholstery / tapicerka



Chopper 503 Gold



Chopper 315 Fire



Chopper 900 Rosewater



Chopper 601 Chrome



Chopper 805 Water



Chopper 303 Magenta



Chopper 905 Nostalgia



Chopper 612 Chocolate



Chopper 702 Petrol



Chopper 002 Passion



Chopper 200 Black



Chopper 714 Imperial



Chopper 001 Purple



## Crown Velvet group B / upholstery / tapicerka

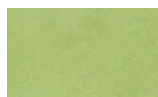


---

## Tokyo group B / upholstery / tapicerka



## Twice group B / upholstery / tapicerka



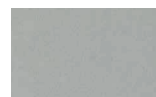
Twice 08 B Pear



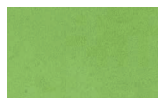
Twice 19 B Gold



Twice 01 A Griffin



Twice 01 B Silver



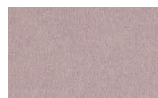
Twice 08 A Apple



Twice 19 A Mandarin



Twice 14 B Mushroom



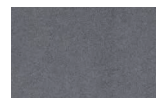
Twice 24 B Parma



Twice 06 B Teal



Twice 05 B Cobalt



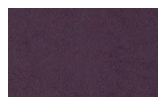
Twice 02 B Pewter



Twice 20 B Canyon



Twice 14 A Walnut



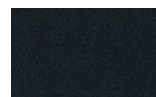
Twice 24 A Aubergine



Twice 06 A Beetle



Twice 05 A Navy



Twice 02 A Onyx



Twice 20 A Paprika



Twice 21 A Chardonay



Twice 21 B Cerise

---

## Diva group C / upholstery / tapicerka



Diva 10 Navy Blue



Diva 14 Violet

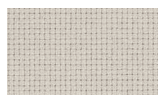


Diva 04 Grey

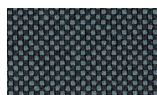


Diva 15 Dark Green

## Go Uni / Go Check / Go Couture group C / upholstery / tapicerka



Go Uni 61138



Go Check 60081



Go Uni 66139



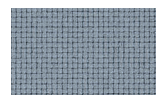
Go Uni 68152



Go Uni 62071



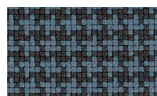
Go Check 64183



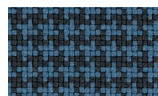
Go Uni 60080



Go Uni 61140



Go Couture 60081



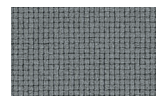
Go Couture 66139



Go Check 62071



Go Uni 65086



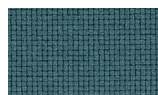
Go Uni 60083



Go Check 61138



Go Uni 66136



Go Uni 67071



Go Couture 65086



Go Uni 60999



Go Check 66136



Go Check 67071



Go Uni 64172

---

## Park group C / upholstery / tapicerka



Park 19



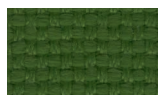
Park 25



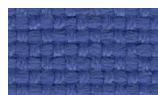
Park 28



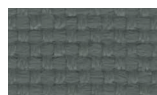
Park 3



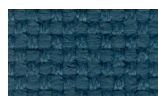
Park 21



Park 24



Park 4



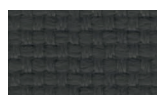
Park 22



Park 10

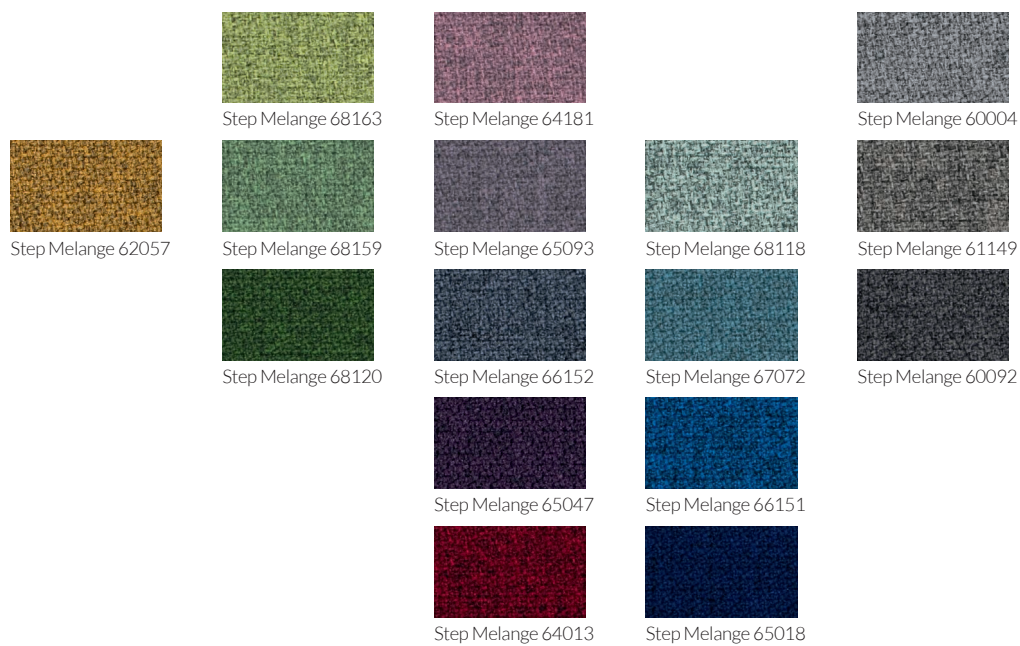


Park 23



Park 12

## Step Melange group C / upholstery / tapicerka



---

## Wool group C / upholstery / tapicerka





## Mood group D / upholstery / tapicerka



---

## Madras / Tornado group L1, L2 / upholstery / tapicerka



Plastic glide / Ślizgacz plastikowy  
Felt glide / Ślizgacz filcowy



GL 01 (pcv)



GL 02 (felt)



(01)  
Natural beech  
Buk naturalny



(02)  
Honey  
Miodowy



(03)  
White washed  
Biały sprany



(29)  
Antique white  
Biały antyczny



(13)  
Yellow stain  
Żółta bejca



(14)  
Red stain  
Czerwona bejca



(12)  
Green stain  
Zielona bejca



(16)  
White  
Biały



(21)  
Light green  
Zielony jasny



(19)  
Light blue  
Niebieski jasny



(17)  
Light grey  
Szary jasny



(26)  
Bleached oak  
Dąb bielony



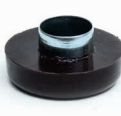
(25)  
Natural oak  
Dąb naturalny



(35)  
White oak  
Dąb biały



(28)  
Bleached ash  
Jesion bielony



GL 03 (pcv)



GL 04 (felt)



(15)  
Antique oil  
Olej antyczny



(06)  
Rustical  
Rustykalny



(07)  
Milky walnut  
Orzech mleczny



(04)  
Walnut  
Orzech



(05)  
Cognac  
Koniak



(08)  
Dark walnut  
Orzech ciemny



(09)  
Wenge  
Wenge



(11)  
Grey stain  
Szara bejca



(10)  
Black stain  
Czarna bejca



(22)  
Dark green  
Zielony ciemny



(23)  
Burgundy  
Bordowy



(20)  
Dark blue  
Niebieski ciemny



(18)  
Dark grey  
Szary ciemny



(24)  
Black  
Czarny



(37)  
Antique oil oak  
Dąb olej antyczny



(27)  
Milky oak  
Dąb mleczny



(36)  
Black oak  
Dąb czarny

Additional options to Classic Bent collection / Dodatkowe opcje do kolekcji Classic Bent



side braces / łączniki boczne



cane seat hand made / wyplot ręczny



---

Metal footrest protection / Metalowa nakładka na podnózek



silver / srebrny

black / czarny

