

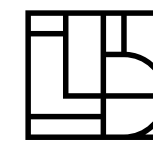


LINIE DESIGN ARTWORK



LINIE DESIGN

HANDMADE RUGS



LINIE DESIGN

ARTWORK

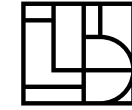






## INDEX

| <b>DESIGN</b>  | <b>IMAGE</b> | <b>INFO</b> |
|----------------|--------------|-------------|
| <b>GENOVA</b>  | P 01         | P 54        |
| <b>BOLOGNA</b> | P 06         | P 38        |
| <b>MATTIA</b>  | P 07         | P 48        |
| <b>LUA</b>     | P 09         | P 40        |
| <b>NIKA</b>    | P 10         | P 41        |
| <b>VERO</b>    | P 13         | P 52        |
| <b>GRAPHIC</b> | P 15         | P 47        |
| <b>VITALIA</b> | P 16         | P 50        |
| <b>CHESSE</b>  | P 18         | P 43        |
| <b>MEMO</b>    | P 20         | P 44        |
| <b>LINCA</b>   | P 23         | P 53        |
| <b>SHARED</b>  | P 24         | P 49        |
| <b>LAGOS</b>   | P 26         | P 46        |
| <b>UNIT</b>    | P 28         | P 45        |
| <b>LUBO</b>    | P 30         | P 51        |
| <b>SMILLA</b>  | P 33         | P 42        |
| <b>SIRIUS</b>  | P 35         | P 55        |



# WELCOME TO ARTWORK

---

Acknowledged Danish designers and highly skilled Indian weavers work together to ensure very exclusive collections: Streamlined, though handmade; functional though aesthetic. Beautiful colours, outstanding materials and dynamic renewal are a matter of course, whilst the environment is top of mind.

You buy a rug, but you also enrich your life with long-lasting fascination for high-quality rugs.





**BOLOGNA POWDER**



**MATTIA WHITE**



AS NORTHERN EUROPE'S BIGGEST DEVELOPER OF **HANDMADE** RUGS LINIE DESIGN AIMS TO FILL HOMES WITH **BEAUTIFUL** RUGS EVERYWHERE IN THE WORLD.







NIKA BLUE





FOUNDED IN DENMARK BACK  
IN 1980, OUR **ROOTS** ARE  
THOROUGHLY NORDIC. THE  
SIMPLE, THOUGH HIGHLY  
**AESTHETIC** COLLECTIONS  
PROVE OUR **SCANDINAVIAN**  
APPROACH TO DESIGN.



VERO SAND









VITALIA ANTHRACITE

ALL RUGS ARE **MADE BY HAND**, AND THESE HANDS BELONG TO SOME OF THE WORLD'S MOST DEDICATED AND **TALENTED** WEAVERS, WHO HAVE REFINED SKILLS THROUGH **GENERATIONS**.









FOCUS IS ON DESIGN, BUT WE ALSO THINK ABOUT THE **WEAVERS** AND THEIR **FAMILIES**. THEREFORE, WE PROVIDE SAFE WORKING CONDITIONS, AND ENSURE EDUCATION FOR 350 KIDS AT THE LINIE DESIGN **SCHOOL**.









SHARED SAND

IN RESPECT TO THE  
**TRADITIONAL** WEAVING  
TECHNIQUES, LEADING  
DANISH DESIGNERS  
CHALLENGE **PATTERNS,**  
**COLOURS** AND **MATERIALS.**  
THE OUTPUT IS OUTSTANDING,  
THOUGH SIMPLE AND  
TIMELESS.













LUBO JADE







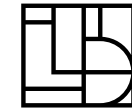


**QUALITY**, INNOVATION, KNOW-HOW AND **RESPONSIBILITY** ARE WEAVED INTO ALL ACTIVITIES. AS A RESULT, CUSTOMERS ENJOY BOTH SURPRISING BEAUTY AND GOOD **CONSCIENCE** YEAR AFTER YEAR.



SIRIUS GREY





# ARTWORK OVERVIEW

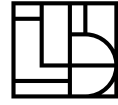
---

A Nordic expression with an international touch. Playful, though aesthetic. Geometric and asymmetric at the same time. Materials are mixed; structures clash and make wonders.

Despite challenging combinations, the rugs stand out in peaceful balance.

The simple look tributes the pure handicraft. All rugs are made by hand, they are two-sided, tight in texture, and most of them can be made in custom sizes.





Model BOLOGNA  
 Designer BODIL JERICHAU  
 Sizes (in cm) 90/160, 140/200, 170/240,  
 200/300, 220/220, 250/350  
 Quality HAND-WOVEN  
 Material WOOL & FLAX Fringes NO



GREY



BLACK



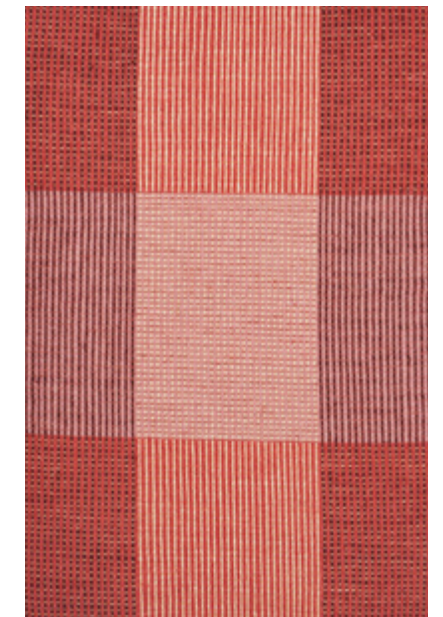
STONE



NATURAL



OCEAN



POWDER

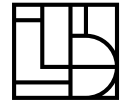


WHITE/BLACK

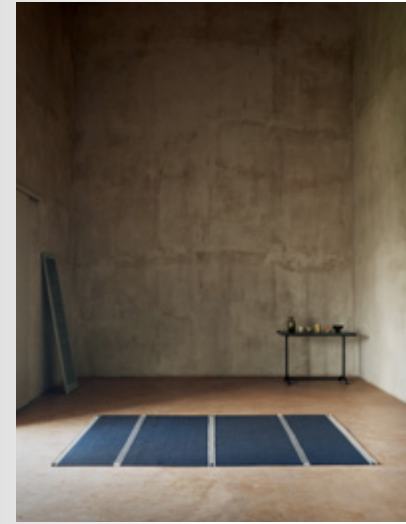


LIME





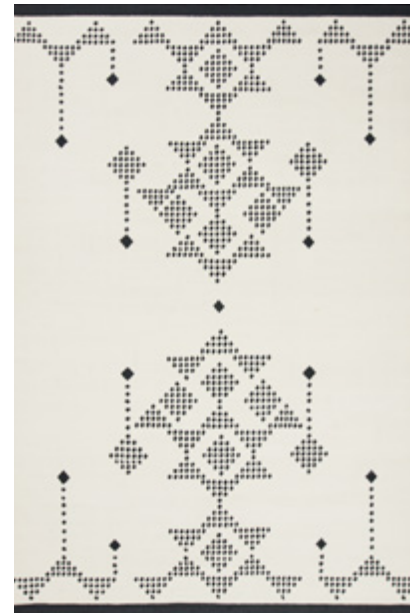
Model LUA  
 Designer URD MOLL GUNDERMANN  
 Sizes (in cm) 140/200, 170/240, 200/300  
 Quality HAND-WOVEN  
 Material NZ WOOL & VISCOSE Fringes YES



Model NIKA  
 Designer URD MOLL GUNDERMANN  
 Sizes (in cm) 80/200, 140/200, 170/240, 200/300  
 Quality HAND-WOVEN  
 Material NZ WOOL Fringes NO



OCEAN



WHITE



BLUE



AQUA

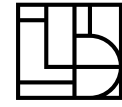


STONE



SAND





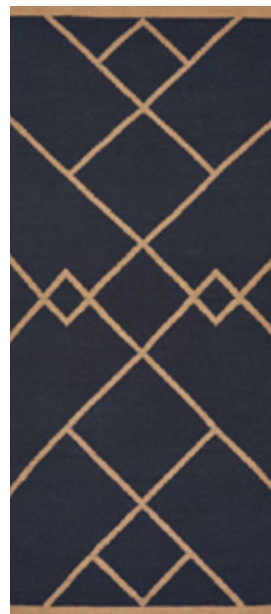
*Model* SMILLA  
*Designer* HANNE KORTEGAARD  
*Size (in cm)* 80/180  
*Quality* HAND-WOVEN  
*Material* NZ WOOL & POLYESTER *Fringes* YES



GREY



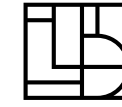
MOSS



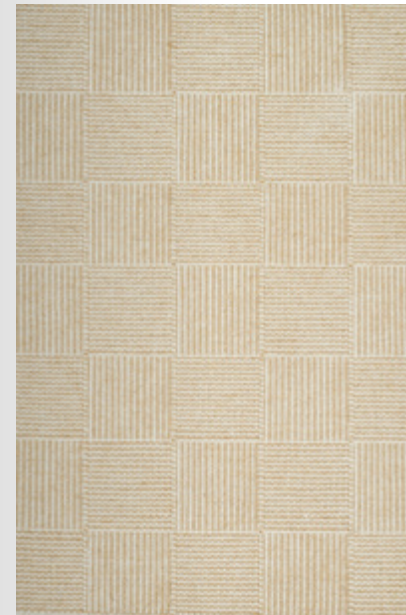
BLUE



WHITE



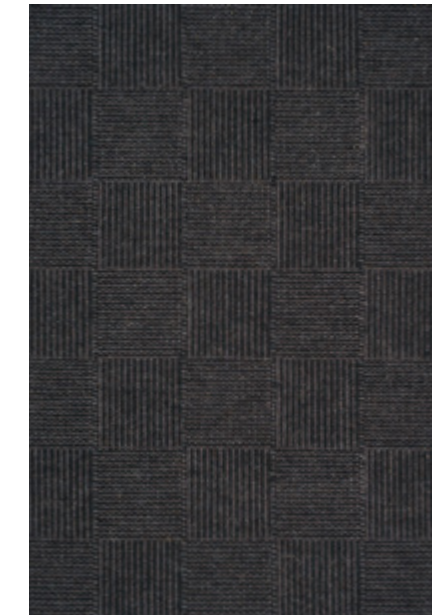
*Model* CHESSE  
*Designer* KIM NAVER  
*Sizes (in cm)* 90/160, 140/200, 170/240,  
 200/300, 250/250, 250/350  
*Quality* HAND-WOVEN  
*Material* WOOL & FLAX *Fringes* NO



WHITE



LIGHT GREY



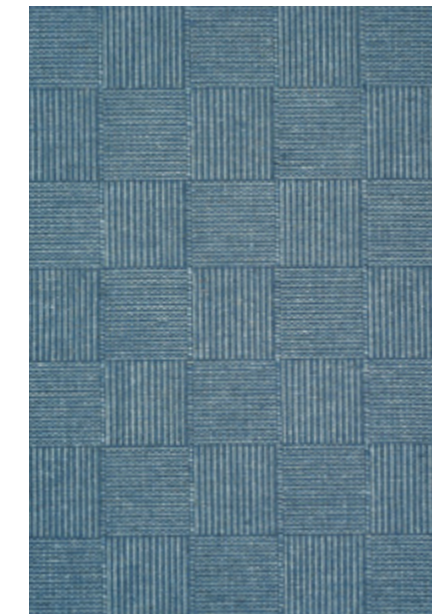
CHARCOAL



BLACK

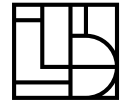


MOSS



OCEAN





Model MEMO  
 Designer URD MOLL GUNDERMANN  
 Sizes (in cm) 140/200, 170/240, 200/300  
 Quality HAND-WOVEN  
 Material NZ WOOL & POLYESTER Fringes YES



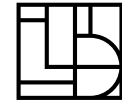
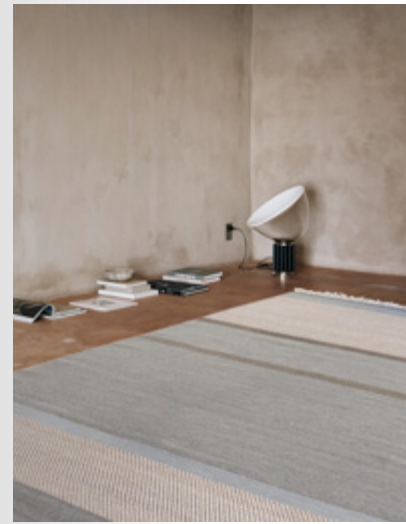
MOSS



RUST



BLUE



Model UNIT  
 Designer URD MOLL GUNDERMANN  
 Sizes (in cm) 80/150, 140/200, 170/240, 200/300, 250/350  
 Quality HAND-WOVEN  
 Material WOOL, FLAX & POLYESTER Fringes YES



GREEN



BEIGE



BLUE



WINE

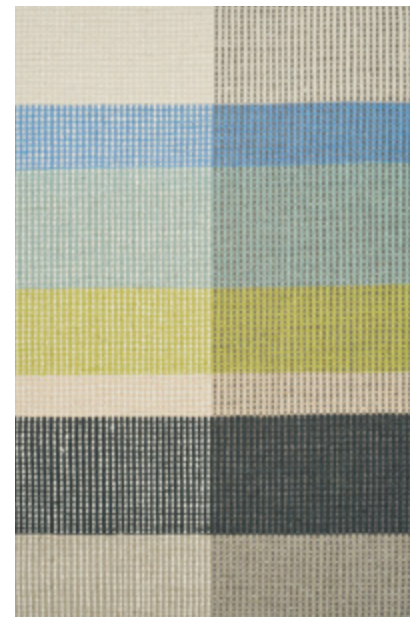




*Model* LAGOS  
*Designer* PERNILLE MØLLER FOLCARELLI  
*Sizes (in cm)* 140/200, 170/240, 200/300  
*Quality* HAND-WOVEN  
*Material* WOOL & FLAX *Fringes* NO



*Model* GRAPHIC  
*Designer* PIA SCHARBAU  
*Sizes (in cm)* 140/200, 170/240, 200/300  
*Quality* HAND-WOVEN  
*Material* NZ WOOL *Fringes* NO



LEAF



GREEN



POWDER



ROSE



HEATHER



BLUE



ORANGE





*Model* MATTIA  
*Designer* HANNE KORTEGAARD  
*Sizes (in cm)* 140/200, 170/240, 200/300,  
 250/250, 250/350, 300/400\*  
*Quality* HAND-WOVEN  
*Material* NZ WOOL & POLYESTER *Fringes* YES

\* THIS SIZE IS ONLY AVAILABLE IN WHITE



WHITE



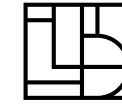
LEAF



STONE



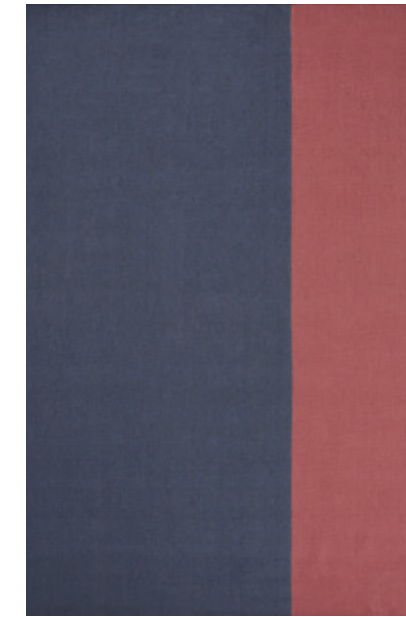
DARK BLUE



*Model* SHARED  
*Designer* HANNE KORTEGAARD  
*Sizes (in cm)* 140/200, 170/240, 200/300  
*Quality* HAND-WOVEN  
*Material* NZ WOOL *Fringes* NO



AQUA



LAVENDER



SAND



YELLOW





*Model* VITALIA  
*Designer* HANNE KORTEGAARD  
*Sizes (in cm)* 140/200, 170/240, 200/300  
*Quality* HAND-WOVEN  
*Material* NZ WOOL & FLAX *Fringes* YES



*Model* LUBO  
*Designer* URD MOLL GUNDERMANN  
*Sizes (in cm)* 140/200, 170/240, 200/300  
*Quality* HAND-WOVEN  
*Material* NZ WOOL *Fringes* NO



MUSTARD



POWDER



BLUE



JADE

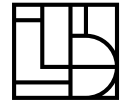


ANTHRACITE



WINE





*Model* VERO  
*Designer* HANNE KORTEGAARD  
*Sizes (in cm)* 80/250, 140/200, 170/240, 200/300  
*Quality* HAND-WOVEN  
*Material* NZ WOOL & POLYESTER *Fringes* YES



*Model* LINCA  
*Designer* KIM NAVER  
*Sizes (in cm)* 140/200, 170/240, 200/300  
*Quality* HAND-WOVEN  
*Material* NZ WOOL *Fringes* NO



WHITE



SAND



BEIGE



DARK BLUE



GREY

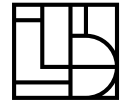


CREAM



PETROL





Model GENOVA  
 Designer GITTE-ANNETTE KNUDSEN  
 Sizes (in cm) 140/200, 170/240, 200/300, 250/300  
 Quality HAND-WOVEN  
 Material NZ WOOL & FLAX Fringes NO



Model SIRIUS  
 Designer GITTE-ANNETTE KNUDSEN  
 Sizes (in cm) 140/200, 170/240, 200/300, 250/350  
 Quality HAND-WOVEN  
 Material NZ WOOL Fringes NO



SAND



GREY



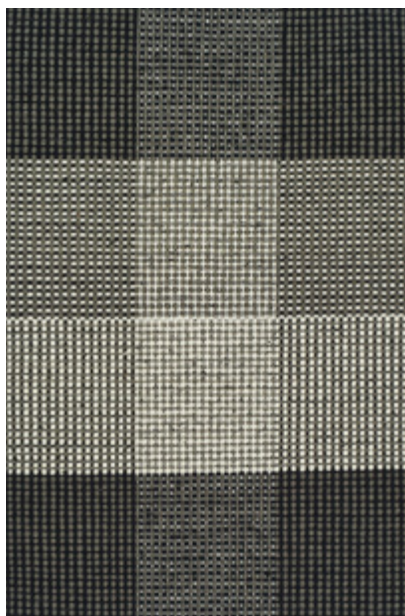
WHITE



NATURAL



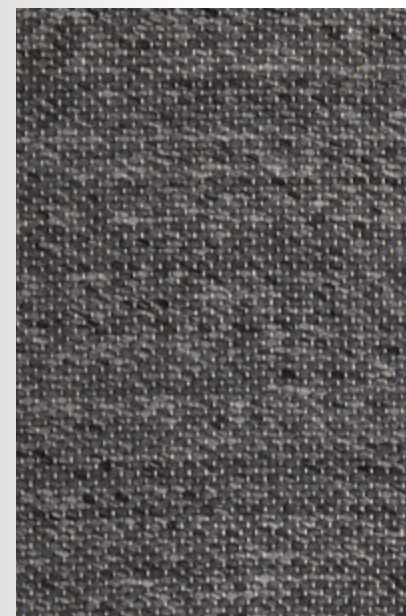
GREY



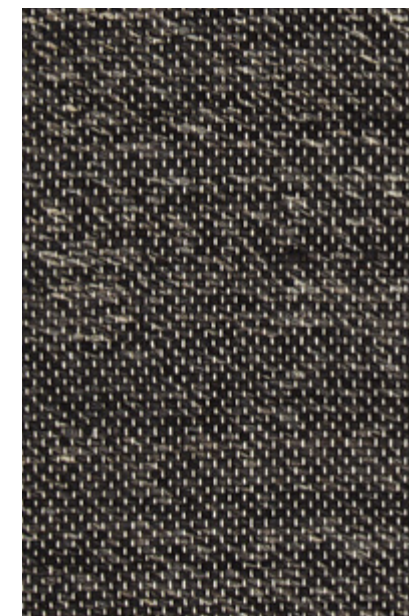
BLACK



PETROL



METAL

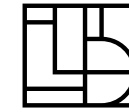


CHARCOAL



STONE





# DESIGN MATTERS

---

Our beautiful rugs take their very beginning at the designers' desks. And only the best ones are at our team. Acknowledged Danish designers put pen to paper and play with colours, patterns and materials. Habits and techniques are constantly challenged. What rises, is exclusive and original collections, which bring surprising beauty into homes everywhere in the world.





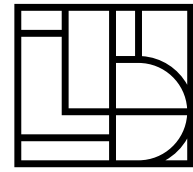
## DESIGNERS

GITTE-ANNETTE KNUDSEN  
KIM NAVER  
HANNE KORTEGAARD  
PIA SCHARBAU  
BODIL JERICHAU  
PERNILLE MØLLER FOLCARELLI  
URD MOLL GUNDERMANN

---

**THANK YOU**  
BROSTE COPENHAGEN  
EXCEL  
FIL DE FER  
FLOS  
GENBYG  
GURLI ELBÆKGAARD  
HAY  
IN A CIRCLE  
JANNI GODTLIEBSEN  
KLASSIK COPENHAGEN  
KNOLL V/ CASA SHOP  
MONTANA  
MUUBS  
OLIVER GUSTAV  
OX DENMARQ  
STENHOLT GLAS  
SKOVSHOVED MØBELFABRIK





# LINIE DESIGN

HANDMADE RUGS

**LINIE DESIGN**

GRANLYET 7 · 3540 LYNGE · DENMARK  
T: +45 48 18 90 66 · INSTAGRAM: @LINIEDESIGN

[WWW.LINIEDESIGN.COM](http://WWW.LINIEDESIGN.COM)