

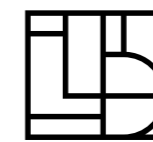


LINIE DESIGN ARTWORK



LINIE DESIGN

HANDMADE RUGS



LINIE DESIGN

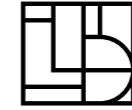
ARTWORK





INDEX

DESIGN	IMAGE	INFO
GENOVA	P 01	P 54
BOLOGNA	P 06	P 38
MATTIA	P 07	P 48
LUA	P 09	P 40
NIKA	P 10	P 41
VERO	P 13	P 52
GRAPHIC	P 15	P 47
VITALIA	P 16	P 50
CHESSE	P 18	P 43
MEMO	P 20	P 44
LINCA	P 23	P 53
SHARED	P 24	P 49
LAGOS	P 26	P 46
UNIT	P 28	P 45
LUBO	P 30	P 51
SMILLA	P 33	P 42
SIRIUS	P 35	P 55



WELCOME TO ARTWORK

Acknowledged Danish designers and highly skilled Indian weavers work together to ensure very exclusive collections: Streamlined, though handmade; functional though aesthetic. Beautiful colours, outstanding materials and dynamic renewal are a matter of course, whilst the environment is top of mind.

You buy a rug, but you also enrich your life with long-lasting fascination for high-quality rugs.



BOLOGNA POWDER



MATTIA WHITE

AS NORTHERN EUROPE'S BIGGEST DEVELOPER OF **HANDMADE** RUGS LINIE DESIGN AIMS TO FILL HOMES WITH **BEAUTIFUL** RUGS EVERYWHERE IN THE WORLD.





NIKA BLUE



FOUNDED IN DENMARK BACK
IN 1980, OUR **ROOTS** ARE
THOROUGHLY NORDIC. THE
SIMPLE, THOUGH HIGHLY
AESTHETIC COLLECTIONS
PROVE OUR **SCANDINAVIAN**
APPROACH TO DESIGN.



VERO SAND





VITALIA ANTHRACITE

ALL RUGS ARE **MADE BY HAND**, AND THESE HANDS BELONG TO SOME OF THE WORLD'S MOST DEDICATED AND **TALENTED** WEAVERS, WHO HAVE REFINED SKILLS THROUGH **GENERATIONS**.





FOCUS IS ON DESIGN, BUT WE ALSO THINK ABOUT THE **WEAVERS** AND THEIR **FAMILIES**. THEREFORE, WE PROVIDE SAFE WORKING CONDITIONS, AND ENSURE EDUCATION FOR 350 KIDS AT THE LINIE DESIGN **SCHOOL**.





SHARED SAND

IN RESPECT TO THE
TRADITIONAL WEAVING
TECHNIQUES, LEADING
DANISH DESIGNERS
CHALLENGE **PATTERNS,**
COLOURS AND **MATERIALS.**
THE OUTPUT IS OUTSTANDING,
THOUGH SIMPLE AND
TIMELESS.







LUBO JADE





QUALITY, INNOVATION, KNOW-HOW AND **RESPONSIBILITY** ARE WEAVED INTO ALL ACTIVITIES. AS A RESULT, CUSTOMERS ENJOY BOTH SURPRISING BEAUTY AND GOOD **CONSCIENCE** YEAR AFTER YEAR.



SIRIUS GREY



ARTWORK OVERVIEW

A Nordic expression with an international touch. Playful, though aesthetic. Geometric and asymmetric at the same time. Materials are mixed; structures clash and make wonders.

Despite challenging combinations, the rugs stand out in peaceful balance.

The simple look tributes the pure handicraft. All rugs are made by hand, they are two-sided, tight in texture, and most of them can be made in custom sizes.



Model BOLOGNA
 Designer BODIL JERICHAU
 Sizes (in cm) 90/160, 140/200, 170/240,
 200/300, 220/220, 250/350
 Quality HAND-WOVEN
 Material WOOL & FLAX Fringes NO



STONE



NATURAL



WHITE/BLACK



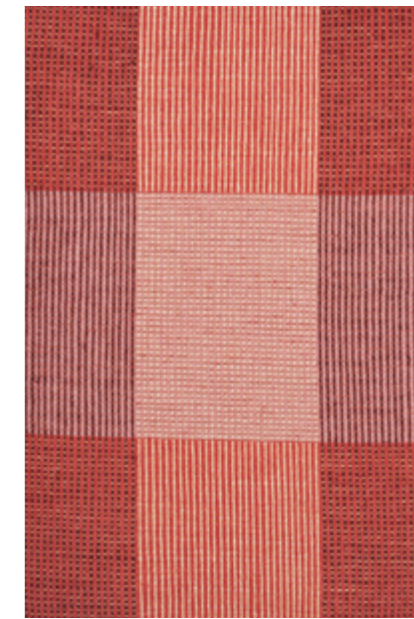
GREY



BLACK



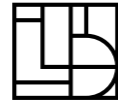
OCEAN



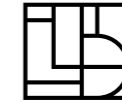
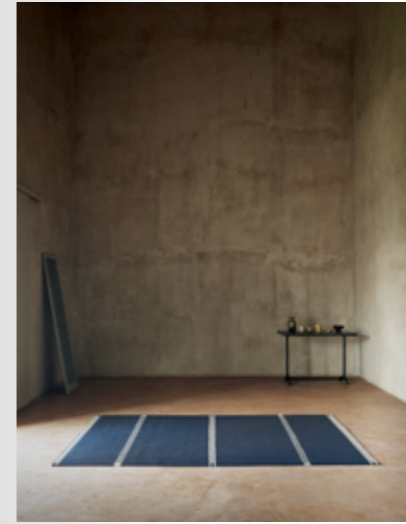
POWDER



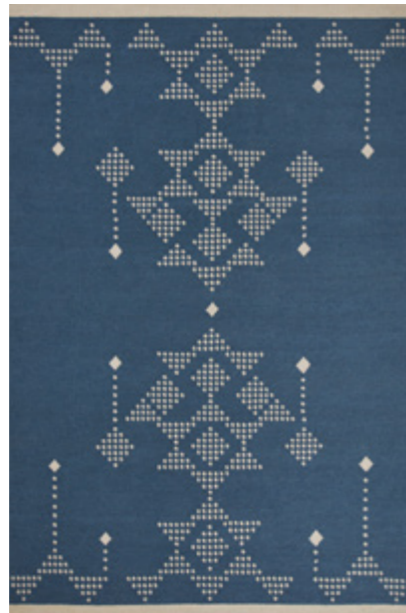
LIME



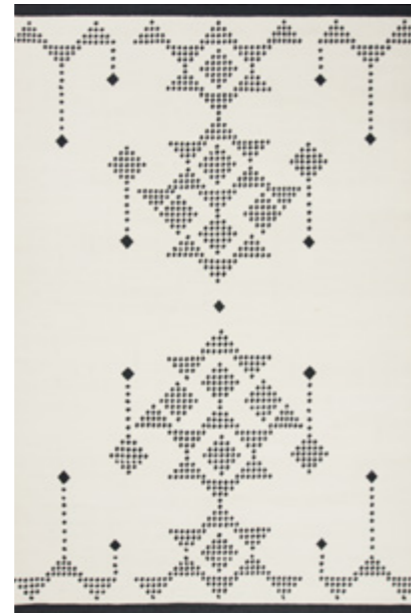
Model LUA
 Designer URD MOLL GUNDERMANN
 Sizes (in cm) 140/200, 170/240, 200/300
 Quality HAND-WOVEN
 Material NZ WOOL & VISCOSE Fringes YES



Model NIKA
 Designer URD MOLL GUNDERMANN
 Sizes (in cm) 80/200, 140/200, 170/240, 200/300
 Quality HAND-WOVEN
 Material NZ WOOL Fringes NO



OCEAN



WHITE



BLUE



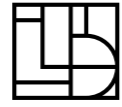
AQUA



STONE



SAND



Model SMILLA
Designer HANNE KORTEGAARD
Size (in cm) 80/180
Quality HAND-WOVEN
Material NZ WOOL & POLYESTER *Fringes* YES



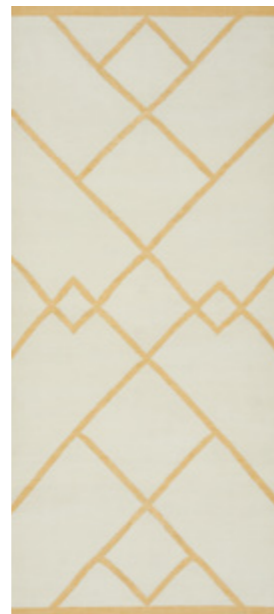
GREY



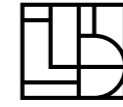
MOSS



BLUE



WHITE



Model CHESSE
Designer KIM NAVER
Sizes (in cm) 90/160, 140/200, 170/240,
 200/300, 250/250, 250/350
Quality HAND-WOVEN
Material WOOL & FLAX *Fringes* NO



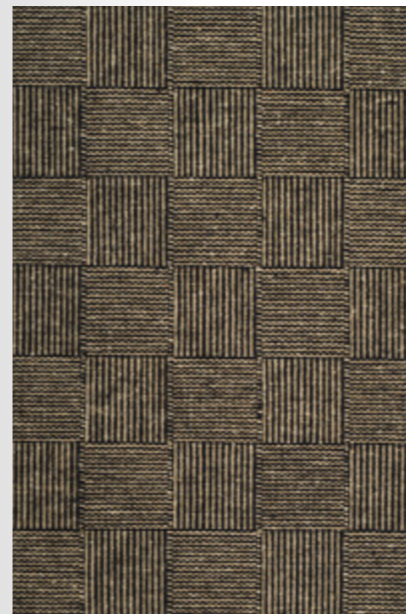
WHITE



LIGHT GREY



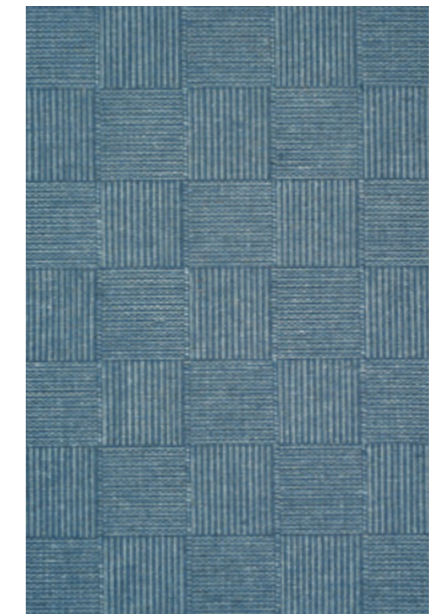
CHARCOAL



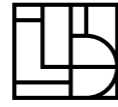
BLACK



MOSS



OCEAN



Model MEMO
 Designer URD MOLL GUNDERMANN
 Sizes (in cm) 140/200, 170/240, 200/300
 Quality HAND-WOVEN
 Material NZ WOOL & POLYESTER Fringes YES



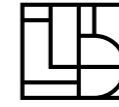
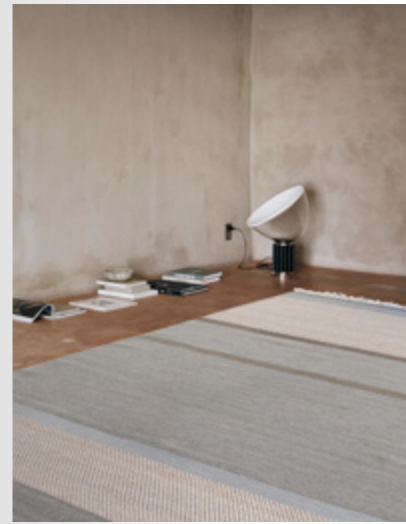
MOSS



RUST



BLUE



Model UNIT
 Designer URD MOLL GUNDERMANN
 Sizes (in cm) 80/150, 140/200, 170/240, 200/300, 250/350
 Quality HAND-WOVEN
 Material WOOL, FLAX & POLYESTER Fringes YES



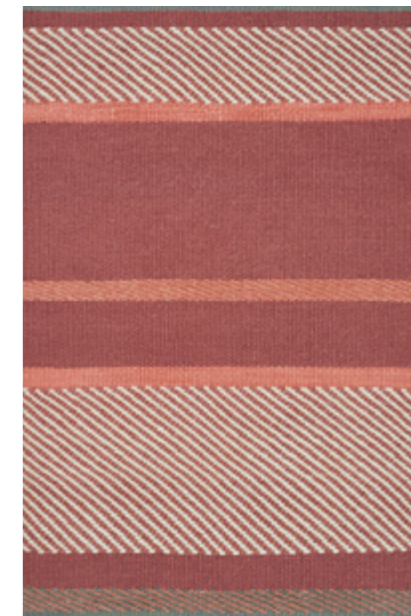
GREEN



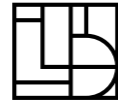
BEIGE



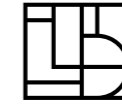
BLUE



WINE



Model LAGOS
Designer PERNILLE MØLLER FOLCARELLI
Sizes (in cm) 140/200, 170/240, 200/300
Quality HAND-WOVEN
Material WOOL & FLAX *Fringes* NO



Model GRAPHIC
Designer PIA SCHARBAU
Sizes (in cm) 140/200, 170/240, 200/300
Quality HAND-WOVEN
Material NZ WOOL *Fringes* NO



LEAF



GREEN



POWDER



ROSE



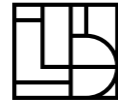
HEATHER



BLUE



ORANGE



Model MATTIA
Designer HANNE KORTEGAARD
Sizes (in cm) 140/200, 170/240, 200/300,
 250/250, 250/350, 300/400*
Quality HAND-WOVEN
Material NZ WOOL & POLYESTER *Fringes* YES

* THIS SIZE IS ONLY AVAILABLE IN WHITE



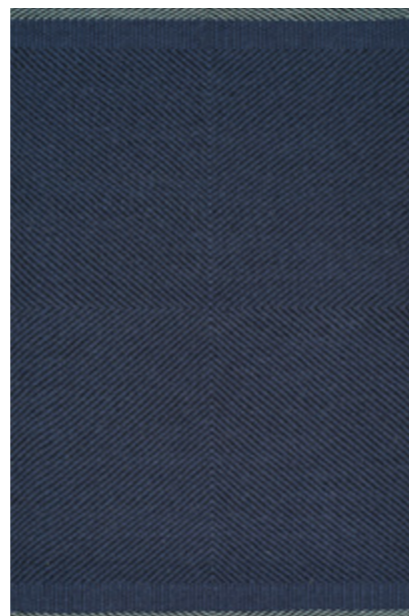
WHITE



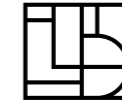
LEAF



STONE



DARK BLUE



Model SHARED
Designer HANNE KORTEGAARD
Sizes (in cm) 140/200, 170/240, 200/300
Quality HAND-WOVEN
Material NZ WOOL *Fringes* NO



AQUA



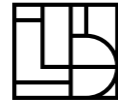
LAVENDER



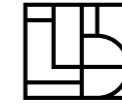
SAND



YELLOW



Model VITALIA
Designer HANNE KORTEGAARD
Sizes (in cm) 140/200, 170/240, 200/300
Quality HAND-WOVEN
Material NZ WOOL & FLAX *Fringes* YES



Model LUBO
Designer URD MOLL GUNDERMANN
Sizes (in cm) 140/200, 170/240, 200/300
Quality HAND-WOVEN
Material NZ WOOL *Fringes* NO



MUSTARD



POWDER



BLUE



JADE



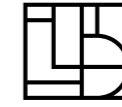
ANTHRACITE



WINE



Model VERO
 Designer HANNE KORTEGAARD
 Sizes (in cm) 80/250, 140/200, 170/240, 200/300
 Quality HAND-WOVEN
 Material NZ WOOL & POLYESTER Fringes YES



Model LINCA
 Designer KIM NAVER
 Sizes (in cm) 140/200, 170/240, 200/300
 Quality HAND-WOVEN
 Material NZ WOOL Fringes NO



WHITE



SAND



BEIGE



DARK BLUE



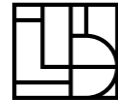
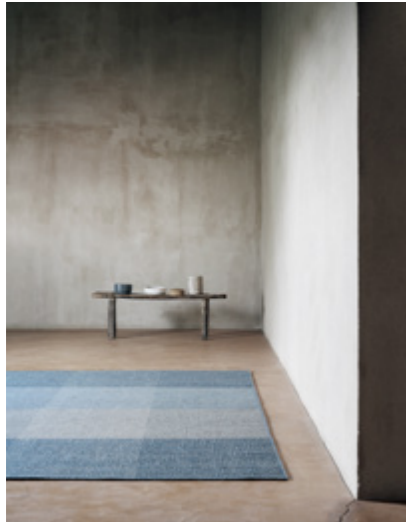
GREY



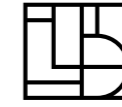
CREAM



PETROL



Model GENOVA
 Designer GITTE-ANNETTE KNUDSEN
 Sizes (in cm) 140/200, 170/240, 200/300, 250/300
 Quality HAND-WOVEN
 Material NZ WOOL & FLAX Fringes NO



Model SIRIUS
 Designer GITTE-ANNETTE KNUDSEN
 Sizes (in cm) 140/200, 170/240, 200/300, 250/350
 Quality HAND-WOVEN
 Material NZ WOOL Fringes NO



SAND



GREY



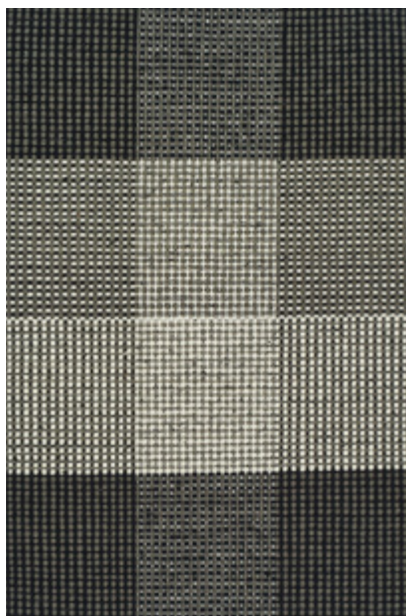
WHITE



NATURAL



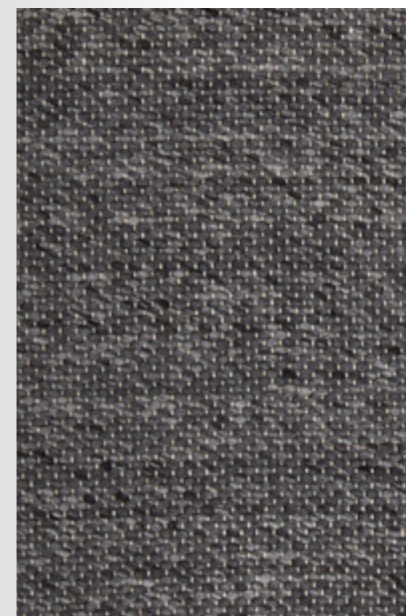
GREY



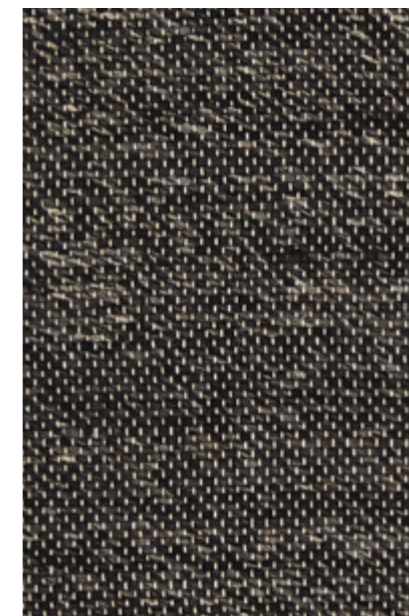
BLACK



PETROL



METAL



CHARCOAL



STONE



DESIGN MATTERS

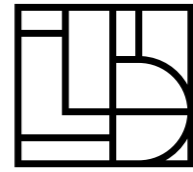
Our beautiful rugs take their very beginning at the designers' desks. And only the best ones are at our team. Acknowledged Danish designers put pen to paper and play with colours, patterns and materials. Habits and techniques are constantly challenged. What rises, is exclusive and original collections, which bring surprising beauty into homes everywhere in the world.



DESIGNERS

GITTE-ANNETTE KNUDSEN
KIM NAVER
HANNE KORTEGAARD
PIA SCHARBAU
BODIL JERICHAU
PERNILLE MØLLER FOLCARELLI
URD MOLL GUNDERMANN

THANK YOU
BROSTE COPENHAGEN
EXCEL
FIL DE FER
FLOS
GENBYG
GURLI ELBÆKGAARD
HAY
IN A CIRCLE
JANNI GODTLIEBSEN
KLASSIK COPENHAGEN
KNOLL V/ CASA SHOP
MONTANA
MUUBS
OLIVER GUSTAV
OX DENMARQ
STENHOLT GLAS
SKOVSHOVED MØBELFABRIK



LINIE DESIGN

HANDMADE RUGS

LINIE DESIGN

GRANLYET 7 · 3540 LYNGE · DENMARK
T: +45 48 18 90 66 · INSTAGRAM: @LINIEDESIGN

WWW.LINIEDESIGN.COM