

CIRCULAR DESIGN - REDUCE - REUSE - RECYCLE - WASTE - RESPONSIBLE RESOURCES - REFORESTATION - CRAFTMANSHIP - TRANSPARENCY EFFICIENT ENERGY - ENVIRONMENTAL AWARENESS - SUSTAINABILITY

mater

Mater Catalogue
2022



| | |
|------------------------------------|------------|
| About Mater | 5 |
| Working with waste | 6 |
| Mater Circular Material | 12 |
| Design piece deposit system | 24 |
| Mater furniture news | 26 |
| The SDGs | 58 |
| Our contribution | 60 |
| Mater collection | 62 |
| Material overview | 98 |
| Designers | 104 |
| Contact and info | 106 |



About Mater

About Mater

Founded in Copenhagen in 2006 Mater is a pioneering global brand with sustainability at its core.

From the outset the goal was to inspire a global design audience and to engage people in sustainable thinking. Using waste material Mater combines sustainability and circular production with timeless design through collaboration with well-established and new design talents.

Meet the founder

Henrik Marstrand

*“Every material we use
is a tribute to sustainable
thinking”*



“Rooted in the Danish design tradition, the aim was to change the way people think of sustainably made furniture”

Who plays a role at Mater in establishing a fully sustainable practice?

“I don’t think we will ever get to a fully sustainable company as the bar is raised all the time.

We realised early on that our entire value chain should be involved and understand what we are trying to achieve. That means the local woodworker, the sawmills, the press moulders, the craftspeople, the plastic moulders, the recycling facilities, the freight forwarders and of course the designers we commission.”

With your wide experience in the design field, what do you think are the most difficult steps to involved in establishing a circular economy in today’s furniture industry?

“One of our biggest challenges is the supply chain implications in launching these new circular products. W’ve realised that we need to help large corporations process their waste so that it is suitable for manufacturing. We pick up the waste at the factory gate, we handle cleaning, separation, grinding, logistics and production. This approach completely new, but we think this is also where we can make a difference.



How did Mater’s journey begin?

In 2006 when Mater was founded, it was an outsider to the design industry. Mater took the first pioneering steps towards designing long-lasting sustainable furniture.

Rooted in the Danish design tradition, the aim was to change the way people think of furniture made in a sustainable way, inspiring consumers and architects all over the world into changing their behaviour.

What is the story behind the Mater name?

Mater is the Latin term for ‘mother’. We strive to protect “mother earth” for future generations to come by setting an example of how to sustainably make long-lasting, beautiful furniture, while at the same time reducing the environmental footprint

So we should think carefully about our consumption behaviour as any responsible mother would do. The solution is NOT to stop consuming but instead encourage consumption with a deeper meaning for the good of our planet.





Introducing Mater Circular Material

A waste composite for future generations

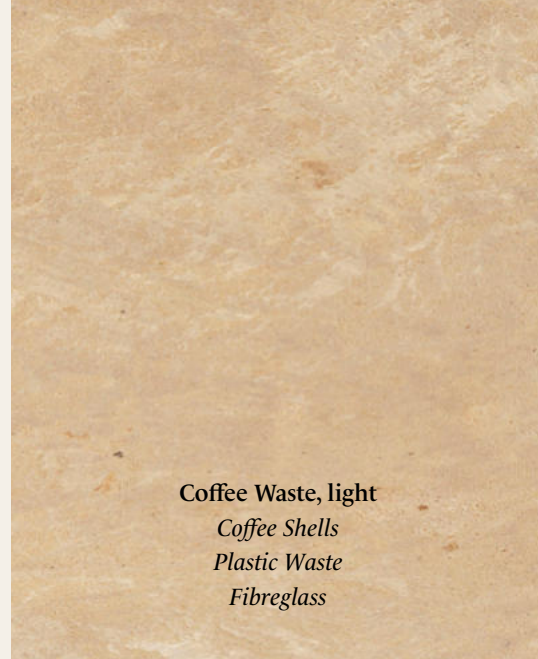
Since Mater's founding in 2006, Mater's mission has been to search for and develop more sustainable production methods.

After years of research and testing we have invented a patented technology that allows us to mix upcycled fibre-based waste materials with different kinds of plastic waste. In our journey we have teamed up with large corporations to understand how to upcycle their fibre and plastic waste.

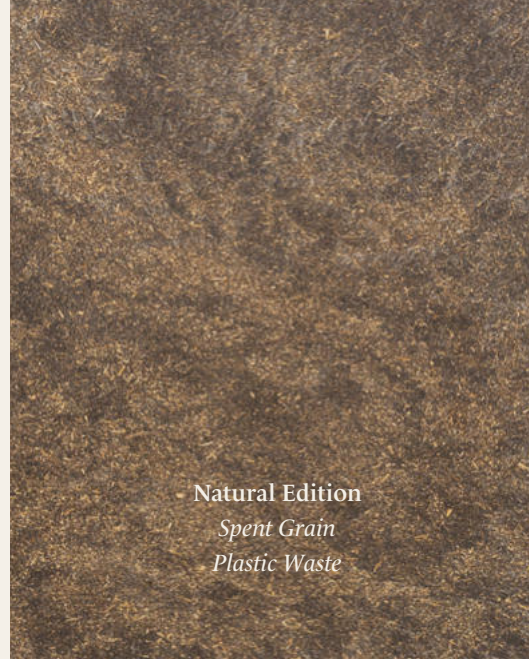
The result is a unique mixture that can be applied to an existing technology in our industry: press moulding. A key priority for Mater and our partners is to take climate action.

We do this by capturing carbon in our furniture instead of the waste materials originating from industrial production and households being burned. The new composite materials are designed to be processed again and again. This is why we offer to take them back after end of life to reuse them and send them back on the market as new furniture.

We support a circular economy that promotes greater resource productivity aimed at reducing waste and avoiding pollution by designing and producing timeless products of high quality.



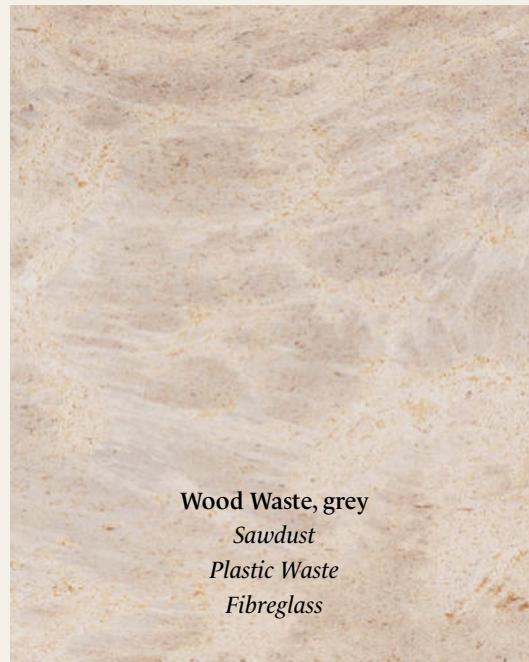
Coffee Waste, light
Coffee Shells
Plastic Waste
Fibreglass



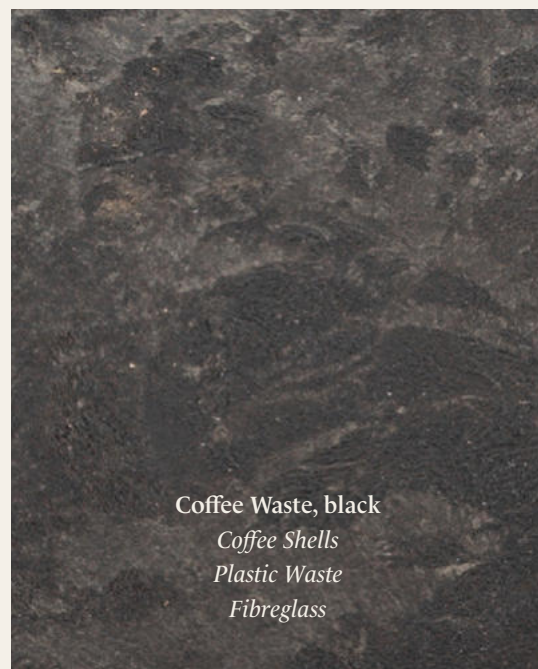
Natural Edition
Spent Grain
Plastic Waste



Coffee Waste, dark
Coffee Shells
Plastic Waste
Fibreglass



Wood Waste, grey
Sawdust
Plastic Waste
Fibreglass



Coffee Waste, black
Coffee Shells
Plastic Waste
Fibreglass

Five unique materials made from waste

Mater Circular Material offers a completely new and unique tactility and materiality. The combination of fibre and plastic waste creates swirling lines and delicate waves, features that cause it to resemble timeless materials like stone, terrazzo or even marble.

Available in five natural or coloured shades, the material is not only pleasing to the eye but also exceptionally durable and water repellent.

A mixture of discarded coffee fibres and industrial plastic



Coffee beans

When the coffee beans has been roasted in the process of making coffee the shell is falling of because of the heat.

Coffee shell fibres

The coffee bean shells are collected and can be used as a strong fibre material in the final blend of the new Mater Circular Material.

Plastic granulates

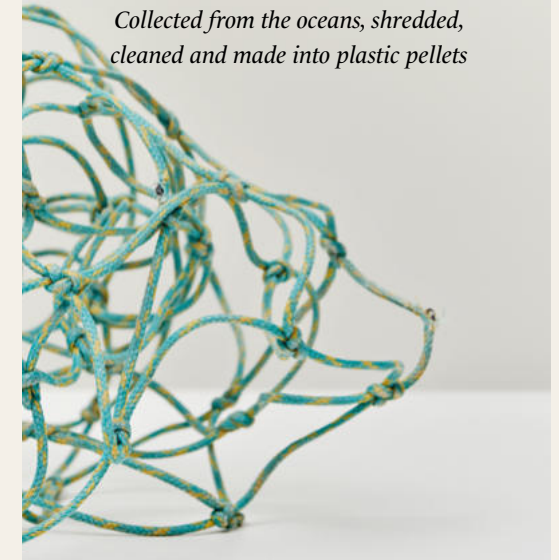
The leftover plastic parts are collected and granulated into small pieces, that are used as a binder in the final blend of the new Mater Circular Material.

Industrial plastic waste

When large industrial producers makes new products, a huge amount of the plastic mold pieces are discarded from the production.

Waste materials we use

Discarded fishing nets
*Collected from the oceans, shredded,
cleaned and made into plastic pellets*



Industrial plastic waste
*Left over plastic pieces from the
moulding process granulated into
small plastic pieces*



Coffee shells
*Left over coffee shells from the roasting
coffee beans*



Sawdust
*Wood sawdust collected from the
construction of wooden furniture*



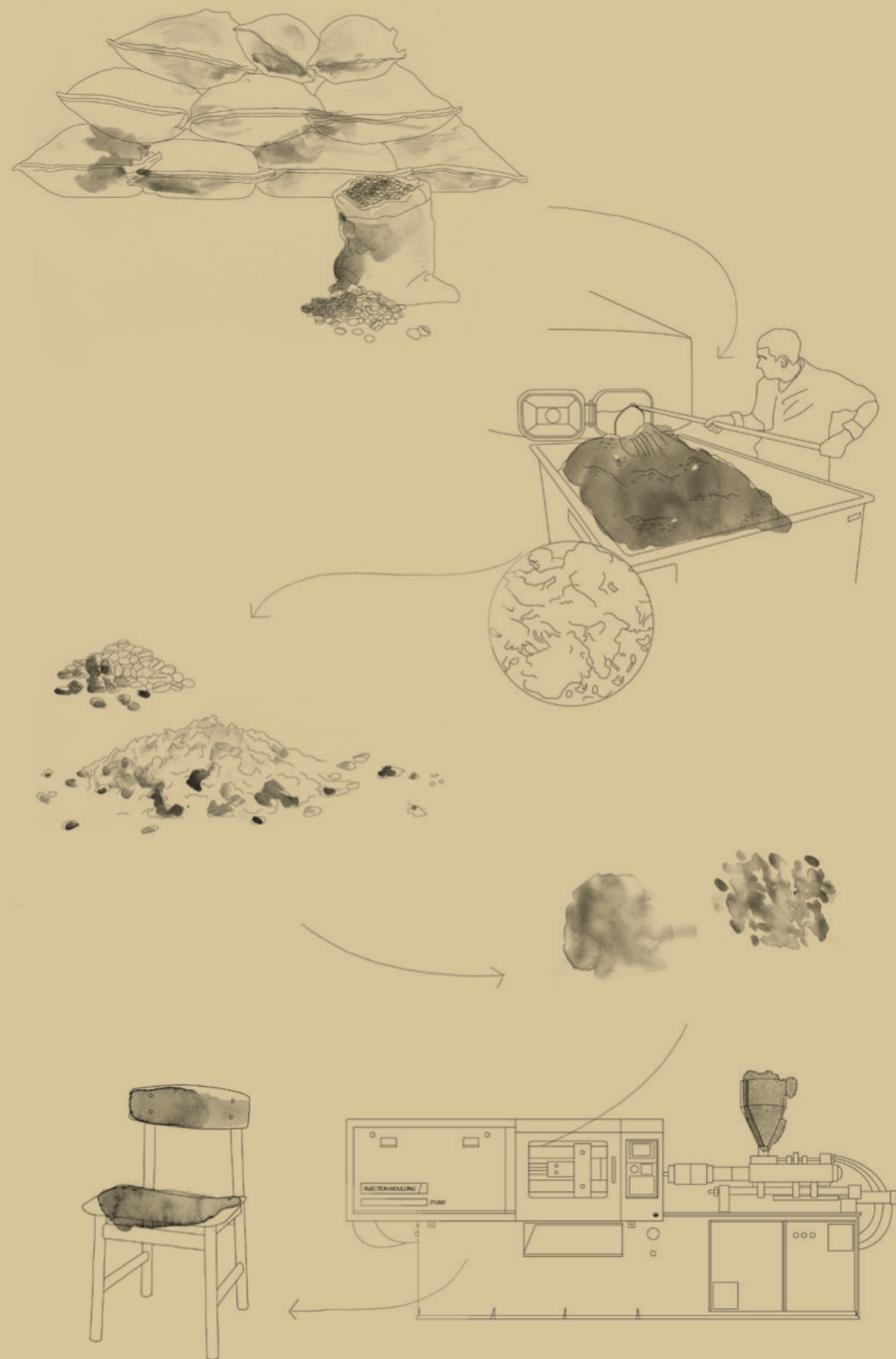
Plastic beer kegs
*Empty beer kegs are crushed and
made into ready-to-use plastic gra-
nuals*



Groundbreaking technology

An innovative and patented new technology allows us to upcycle fibre-based waste materials with upcycled plastic waste. This unique mixture can be used for press moulding.

The technology allows us to upcycle industrial waste more efficiently while reducing carbon emissions, which means we use resources we already have available instead of them being burned.







**It is our responsibility
to take items back**

Design piece deposit system

Our new patented waste composite allows Mater to offer a circular take-back system. All pieces made with Mater Circular Material can be recycled up to five times and made into new furniture. This is an essential step towards Mater's vision of becoming one hundred percent circular.



New circular products are made for easy disassembly and chair seats can be recycled into new products up to five times.

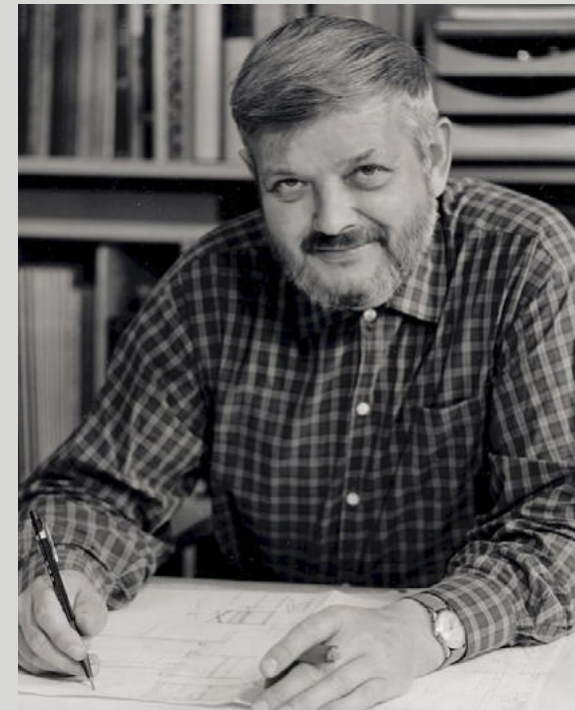
**Mater furniture
news**



Mater furniture news

Presenting

Børge Mogensen *Conscious*



BM3162 Chair & BM5462 Table

Danish modern reimagined in an upcycled WASTE edition, a collection of chairs and tables designed in 1958 by the renowned Danish furniture designers and architects Børge Mogensen and Esben Klint.

It is the first time a collection from Børge Mogensen relauches in a different material than the original. A new sustainable and circular material made from waste and developed by Mater forms the seat and backrest of the chair.

*Adding new traditions
to old ones*

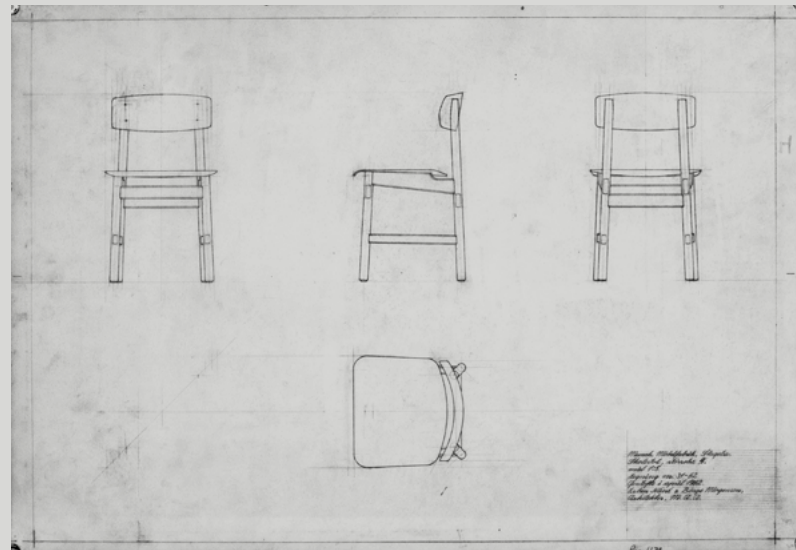


Original photos of the Chair & Table Collection
made from wooden veneer



The Conscious Chair placed on top of the discarded plastic parts that are molded into the seat and backrest of the new WASTE edition, combined with either coffee shells or sawdust.

“It must be driven by visionaries who do not accept the world’s status quo.”



Mater’s founder and Head of Circular Transformation, Henrik Marstrand, who is responsible for the collection’s product development and the collaboration with Emilie and Sarah, says: “Working with the Mogensen family has been a fantastic opportunity for Mater. What’s more, putting a collection from the 1950s into production using new circular materials has been highly motivating. The furniture gains a completely new expression and materiality.”

This innovative technology developed by Mater for press moulding many kinds of furniture allows efficient upcycling of industrial waste while also reducing carbon emissions. For this collection, industrial waste from Grohe and BKI Kaffe is mixed with sawdust.

Henrik Marstrand explains: “When launching a new collection, we always make sure that it supports our vision to use upcycled plastic and other waste materials. We’re confident that the Børge Mogensen Conscious collection will make a significant positive impression in our industry.”

The seat and the backrest of the new chair are made from upcycled fibre-based waste materials and plastic waste mixed with sawdust from the FSC wooden base of the chair, in short, Mater Circular Material.



BM3162 Chair, Wood Waste, grey
Painted in the original Børge Mogensen Grey



The three Børge Mogensen grandchildren collaborating with Mater
Emilie Ventujol Mogensen, Sarah Moutouh Mogensen
and Rasmus Mogensen

The final stage of developing Mater’s innovative new material involved a close collaboration with two of Mogensen’s grandchildren, Emilie Ventujol Mogensen and Sarah Alexandra Moutouh. The visual campaign also bears the unique Mogensen touch, as Emilie and her brother Rasmus Mogensen are the creative director and photographer, respectively.

It is no coincidence that the three grandchildren are deeply involved in this collection. Emilie and Sarah Alexandra are both designers. Together with the other four grandchildren, they are now more involved in their grandfather’s design legacy. They approach this task with the utmost humility, stating: “It’s not just our family’s heritage, but Denmark’s.”

“Our family shares the understanding that just because you can produce some of Børge’s designs, it does not mean that you have to. It needs to make sense in ways that cannot necessarily be measured. It must be driven by visionaries who do not accept the world’s status quo. This is how we perceive Mater.

They are on an important mission working with circular production. The future calls for companies that take that responsibility and manage to make it into a solid and lucrative business. We would like to support that with our family’s name and values,” Emilie explains.



BM3162 Chair, Wood Waste, grey | Accent Café Table, Solid oak wood, Sirka Grey



BM3162 Chair, Coffee Waste, Dark



BM5462 Table, FSC® Certified Solid oak wood | BM3162 Chair, Coffee Waste, light



BM3162 Chair
Wood Waste, grey



BM3162 Chair
Coffee Waste, light



BM3162 Chair
Coffee Waste, black



Børge Mogensen

Danish furniture designer Børge Mogensen (13 April 1914 – 5 October 1972) was one of the most important among a generation of furniture designers who made Danish Modern known throughout the world.

Together with colleagues such as Arne Jacobsen and Hans Wegner, Mogensen created international respect for Danish furniture design. His simple and functional designs have enjoyed worldwide demand for more than half a century.



Mater furniture news

Presenting
Eternity Chair



By Space Copenhagen

Presenting the new Eternity stacking chair made from waste using Mater Circular Material and designed by Space Copenhagen.

Designed to integrate easily into various kinds of spaces and interior aesthetics, the focus is on comfort and functionality combined with industrial and sculptural features.

*“The foundation of our design is the material’s
inspiring organic and tactile nature.”*

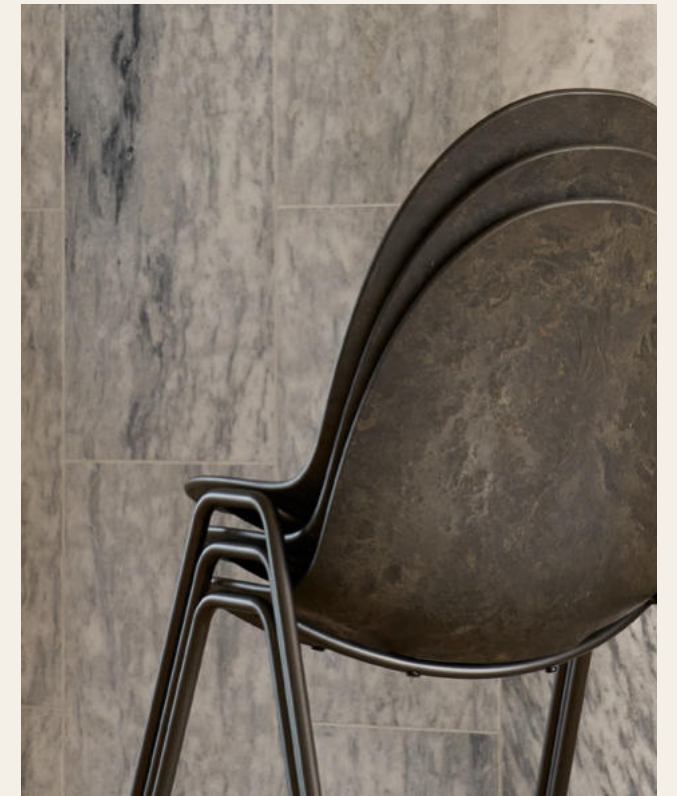


“We’re incredibly proud to be taking part in this exciting process and technology – and also to finally be able to present a circular stacking chair. The foundation of our design is the material’s inspiring organic and tactile nature.

The name Eternity speaks to Mater’s circular way of thinking because it’s made of recycled materials and can be recycled again, but also reflects the idea that the chair can be stacked sky-high.



Eternity Chair, Coffee Waste, Dark | Mater Dining Table, FSC® Certified Solid beech wood, Sirka Grey





Space Copenhagen

Established in 2005 by Signe Bindslev Henriksen and Peter Bundgaard Rützou. Space Copenhagen is a studio that works across multiple disciplines from furniture, lighting and refined objects to art installations, art direction and interior design for private homes, hotels and restaurants all over the world.

Space Copenhagen's intuitive approach to design embraces Poetic Modernism, resulting in designs distinctively shaped by the given circumstances, functional needs and a fundamental interest in human behaviour. Space Copenhagen's approach reflects its belief in and a slowaesthetic that centres on quality and longevity.



Mater furniture news

Presenting

Bowl Table *Waste Edition*



By Ayush Kasliwal

Presenting the new Bowl Table Waste Edition. The iconic Bowl Table, one of Mater's classics, has featured in the Mater collection since the beginning. There are three colours in the new Waste Edition,

which of course is made from waste. Each tabletop has a distinct pattern that beautifully complements the straight lines and modern shape of the tables.



Bowl Table Waste Edition seen in the colours:
Wood Waste, grey and Coffee Waste, light



Bowl Table Waste Edition seen in the colour Coffee Waste, dark

Introducing the new Bowl Table Waste Edition, one of Maters classics, now made from upcycled waste.

The Bowl Table Waste Edition is a collection honoring great design through a circular agenda by promoting greater resource productivity with a strong mission to reduce waste — with a look and feel that speaks for itself.

The Bowl Table Waste Edition comes in Wood Waste, grey and two brown shades: the Coffee Waste, light and Coffee Waste, dark.

The two Coffee Waste editions are made from discarded industrial plastic waste mixed with the shells of coffee beans and the Wood Waste edition is a mixture of industrial plastic waste, sawdust and wooden fibres from the production of furniture.





Bowl Table Waste Edition, Coffee Waste, Dark | Winston Daybed, FSC® Certified Solid oak wood

Bowl Table Waste Edition, Wood Waste, Grey



Ayush Kasliwal

Ayush Kasliwal is a furniture design graduate from the National Institute of Design Ahmedabad, India's premier design institute.

Ayush's design studio AKFD is committed to the development of ideas using local crafts that have evolved over centuries. His work represents a fusion of unique creativity and uncompromising integrity that is rarely encountered in a highly competitive world market.

We are comitted to The Sustainable Development Goals

Mater’s sustainable values align with the United Nations Sustainable Development Goals, a shared blueprint adopted by 193 nations that contains 17 sustainable development goals to improve our planet and living conditions by 2023. Our current collection supports eight of them.



We bring new innovative production techniques into the furniture business and upcycle industrial waste, as evidenced by our revolutionary circular facility for large-scale production that began operation in mid-2021.



Sustainable consumption is about doing more with less. Our circular production uses waste, which means we support consumption-driven change, i.e. the more we sell, the more waste we remove.



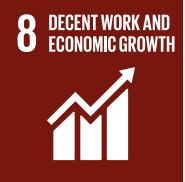
We help reduce carbon emissions by using circular and upcycled materials in our designs. For example the Ocean Chair in our Ocean collection saves 82% in carbon emissions compared to virgin plastic.



Both our Ocean and Nova Sea collections are made of discarded fishing nets from the oceans. We are proud that these products contribute to reducing landfill, marine pollution and the loss of valuable resources.



All of our lighting is partially made with sustainable materials, ranging from upcycled aluminium to certified wood. To save energy, all our lighting uses state-of-the-art LED technology, the most sustainable light source available.



Our code of conduct ensures that we work to achieve better standards: safe working conditions, fair wages, fair prices and adherence to local environmental standards.



All our wooden products are FSC certified, which means the wood comes from responsibly managed forests, where harvesting trees is limited to what the forests can reproduce, avoiding the exploitation of nature. FSC certification also ensures fair pricing, fair wages and fair working conditions.



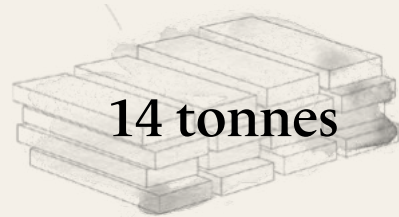
We work with production partners who share the same ambition as Mater: creating partnerships for change. Together we are committed to searching for new and better ways of responsibly making timeless designs.

Tonnage Mater removed and upcycled in 2021



2 tonnes

Industrial plastic waste



14 tonnes

Mango wood



8 tonnes

Discarded fishing nets



and in total
11 tonnes CO₂



Mater collection

**Outdoor
collection**

OCEAN CHAIR
by Jørgen & Nanna Ditzel



Upcycled fishing nets mixed with industrial plastic waste and upcycled fiberglass
Black / Sand
20% upcycled steel frame, gun metal finish
W 60 cm D 56 cm H 81 cm SH 46 cm AR 67 cm

Item no. 09301



Item no. 09303



OCEAN BENCH
by Jørgen & Nanna Ditzel

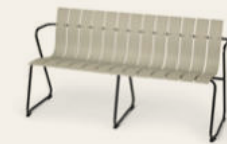


Upcycled fishing nets mixed with industrial plastic waste and upcycled fiberglass
Black / Sand
20% upcycled steel frame, gun metal finish
W 79 cm D 70 cm H 30

Item no. 09351



Item no. 09353



OCEAN OC2 CHAIR
by Jørgen & Nanna Ditzel



Upcycled plastic beer kegs from Carlsberg and A:gain mixed with industrial plastic waste and upcycled fiberglass
Green
20% upcycled steel frame, gun metal finish
W 60 cm D 56 cm H 81 cm SH 46 cm ARH 67 cm

Item no. 09304



OCEAN OC2 BENCH
by Jørgen & Nanna Ditzel



Upcycled plastic beer kegs from Carlsberg and A:gain mixed with industrial plastic waste and upcycled fiberglass
Green
20% upcycled steel frame, gun metal finish
W 79 cm D 70 cm H 30

Item no. 09354



OCEAN LOUNGE CHAIR
by Jørgen & Nanna Ditzel



Upcycled fishing nets mixed with industrial plastic waste and upcycled fiberglass
Black / Sand
20% upcycled steel frame, gun metal finish
W 72 cm D 63 cm H 67 cm SH 39 cm ARH 55 cm

Item no. 09331



Item no. 09333



OCEAN OC2 LOUNGE CHAIR
by Jørgen & Nanna Ditzel



Upcycled plastic beer kegs from Carlsberg and A:gain mixed with industrial plastic waste and upcycled fiberglass
Green
20% upcycled steel frame, gun metal finish
W 72 cm D 63 cm H 67 cm SH 39 cm ARH 55 cm

Item no. 09334



OCEAN 2 PERS. TABLE
by Jørgen & Nanna Ditzel



Upcycled fishing nets mixed with industrial plastic waste and upcycled fiberglass
Black / Sand
20% upcycled steel frame, gun metal finish
W 70 cm D 70 cm H 74 cm

Item no. 09311



Item no. 09313



OCEAN LOUNGE TABLE
by Jørgen & Nanna Ditzel

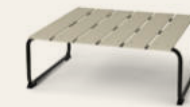


Upcycled fishing nets mixed with industrial plastic waste and upcycled fiberglass
Black / Sand
20% upcycled steel frame, gun metal finish
W 79 cm D 70 cm H 30

Item no. 09341



Item no. 09343



OCEAN OC2 2 PERS. TABLE
by Jørgen & Nanna Ditzel



Upcycled plastic beer kegs from Carlsberg and A:gain mixed with industrial plastic waste and upcycled fiberglass
Green
20% upcycled steel frame, gun metal finish
W 70 cm D 70 cm H 74 cm

Item no. 09314



OCEAN OC2 LOUNGE TABLE
by Jørgen & Nanna Ditzel



Upcycled plastic beer kegs from Carlsberg and A:gain mixed with industrial plastic waste and upcycled fiberglass
Green
20% upcycled steel frame, gun metal finish
W 79 cm D 70 cm H 30

Item no. 09344

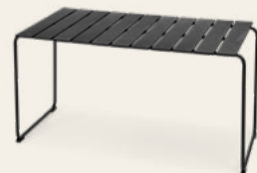


OCEAN 4 PERS. TABLE
by Jørgen & Nanna Ditzel

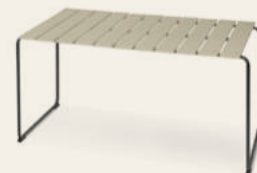


Upcycled fishing nets mixed with industrial plastic waste and upcycled fiberglass
Black / Sand
20% upcycled steel frame, gun metal finish
L 140 cm D 70 cm H 74 cm

Item no. 09321



Item no. 09323

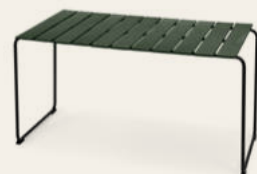


OCEAN OC2 4 PERS. TABLE
by Jørgen & Nanna Ditzel



Upcycled plastic beer kegs from Carlsberg and A:gain mixed with industrial plastic waste and upcycled fiberglass
Green
20% upcycled steel frame, gun metal finish
L 140 cm D 70 cm H 74 cm

Item no. 09324



Mater collection

**Indoor
collection**

Mater collection

ETERNITY SIDECHAIR
by Space Copenhagen



Steel frame, Gun metal
Upcycled coffee shells mixed with industrial plastic waste
Coffee Waste, Black
W 53.5 cm D 55 cm H 87.5 cm SH 46 cm

Item no. 11001
NEW

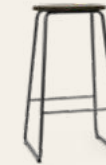


EARTH STOOL 69 CM
by Eva Harlou



Steel frame, Gun metal
Upcycled coffee shells or beer waste mixed with industrial plastic waste
Coffee Waste Dark (06045) / Beer Waste Edition (06046) / Coffee Waste Light (06048)
W 37 cm D 27 cm H 69 cm

Item no. 06045



Item no. 06046



Item no. 06048
NEW



BM3162 CHAIR
by Børge Mogensen & Esben Klint



Solid oak or beech wood frame, FSC® certified
Upcycled coffee shells mixed with industrial plastic waste
Coffee Waste, Light(10001) / Coffee Waste, Black (10002) / Wood Waste, Grey (10003)
W 47 cm D 46.5 cm H 78.5 cm SH 46 cm

Item no. 10001
NEW



Item no. 10002
NEW



Item no. 10003
NEW



EARTH STOOL 74 CM
by Eva Harlou



20% upcycled steel frame, Gun metal
Upcycled coffee shells or beer waste mixed with industrial plastic waste
Coffee Waste Dark (06042) / Beer Waste Edition (06043) / Coffee Waste Light (06047)
W 37 cm D 27 cm H 74 cm

Item no. 06042



Item no. 06043



Item no. 06047
NEW



NOVA SEA SIDECHAIR
by Arde



20% upcycled steel frame, gun metal finish
Upcycled fishing nets / industrial plastic waste.
Black
W 55 cm D 55 cm H 80 cm

Item no. 09011
Upholstered seat



Item no. 09013



EARTH STOOL BACKREST 69 CM
by Eva Harlou



20% upcycled steel frame, Gun metal
Upcycled coffee shells or beer waste mixed with industrial plastic waste
Coffee Waste Dark (06062) / Beer Waste Edition (06063) / Coffee Waste Light (06068)
W 37 cm D 27 cm H 99cm SH 69 cm

Item no. 06062



Item no. 06063



Item no. 06068
NEW



NOVA SEA ARMCHAIR
by Arde



20% upcycled steel frame, gun metal finish
Upcycled fishing nets / industrial plastic waste.
Black
W 55 cm D 55 cm H 80 cm ARH 67 cm

Item no. 09012
Upholstered seat



Item no. 09014



EARTH STOOL BACKREST 74 CM
by Eva Harlou



20% upcycled steel frame, Gun metal
Upcycled coffee shells or beer waste mixed with industrial plastic waste
Coffee Waste Dark (06065) / Beer Waste Edition (06066) / Coffee Waste Light (06067)
W 37 cm D 27 cm H 104 cm SH 74

Item no. 06065



Item no. 06066



Item no. 06067
NEW



Mater collection

MASK STOOL
by Eva Harlou



20% upcycled steel frame, black
Upcycled beer waste mixed with
industrial plastic waste
Natural edition
W 40 cm D 40 cm SH 45 cm to 72 cm
(adjustable seat height)

Item no. 06050



LOW STOOL / HIGH STOOL
by Space Copenhagen



Solid Beech, FSC® certified
Dark Stain Lacquered
Black leather seat
W 45 cm D 36 cm

Item no. 01003
H 47 cm



Item no. 01002
H 74 cm



Item no. 01004
H 69 cm



LOW STOOL / HIGH STOOL
by Space Copenhagen



Solid Beech, FSC® certified,
Black Stain Lacquered
Black leather seat
W 45 cm D 36 cm

Item no. 01013
H 47 cm



Item no. 01012
H 74 cm



Item no. 01014
H 69 cm



LOW STOOL / HIGH STOOL
by Space Copenhagen



Beech, FSC® certified.
Sirka Grey Stain Lacquered, Black leather seat
W 45 cm D 36 cm

Item no. 01007
H 47 cm



Item no. 01006
H 74 cm



Item no. 01008
H 69 cm



LOW STOOL / HIGH STOOL
by Space Copenhagen



70% recycled aluminium, polished
Black leather seat
W 45 cm D 36 cm

Item no. 01023
H 47 cm



Item no. 01022
H 74 cm



Item no. 01024
H 69 cm



Mater collection

LOW STOOL / HIGH STOOL
by Space Copenhagen



Soaped Oak, FSC certified®
Pigmentet upholstery, Natural
W 45 cm D 36 cm

Item no. 01033
H 47 cm



Item no. 01032
H 74 cm



Item no. 01034
H 69 cm



HIGH STOOL
by Space Copenhagen



Black Stain Lacquered Oak, FSC® certified.
Pigmentet upholstery, Black
W 45 cm D 36 cm

Item no. 01082
H 74 cm



Item no. 01084
H 69 cm



LOW STOOL / HIGH STOOL
by Space Copenhagen



Sirka Grey Stain Lacquered Oak, FSC® certified
Pigmentet upholstery, Black
W 45 cm D 36 cm

Item no. 01043
H 47 cm



Item no. 01042
H 74 cm



Item no. 01044
H 69 cm



HIGH STOOL TEXTILE
by Space Copenhagen



Sirka Grey Stain Lacquered Oak, FSC® certified.
Plum: Two-coloured upholstery fabric made from 98% post-consumer recycled polyester seat
Grey: Naturally coloured wool seat
W 45 cm D 36 cm

Item no. 01091
H 69 cm

NEW



Item no. 01092
H 69 cm

NEW



LOW STOOL / HIGH STOOL
by Space Copenhagen



Dark Stain Lacquered Oak, FSC® certified.
Pigmentet upholstery, Black
W 45 cm D 36 cm

Item no. 01053
H 47 cm



Item no. 01052
H 74 cm



Item no. 01054
H 69 cm



THE DINING CHAIR
by Space Copenhagen

Item no. 01201

Item no. 01202

Item no. 01204



Oak, FSC® Certified / Beech, FSC Certified
Matt Lacquered Oak / Sirka Grey Stain Oak /
Black Lacquered Beech
Pigmentet upholstery, Natural / Black
W 52 cm D 44 cm H 80 cm SH 47 cm



SHELL BAR STOOL
by Michael Dreeben

Item no. 02190
Seat no. 02195

Item no. 02190
Seat no. 02193

Item no. 02190
Seat no. 02194



Oak, FSC® certified
Sirka Grey lacquer stain
Pigmentet upholstery, ULTRA
Brandy / Cognac / Black
W 37 cm D 45 cm H 105 cm SH 77 cm



HIGH STOOL BACKREST
by Space Copenhagen

Item no. 01211

Item no. 01212

Item no. 01214



Oak, FSC® Certified / Beech, FSC Certified
Matt Lacquered Oak / Sirka Grey Stain Oak /
Black Lacquered Beech
Pigmentet upholstery, Natural / Black
W 46 cm D 38 cm H 102 cm SH 74 cm



SHELL BAR STOOL
by Michael Dreeben

Item no. 02191
Seat no. 02195

Item no. 02191
Seat no. 02193

Item no. 02191
Seat no. 02194



Oak, FSC® certified
Sirka Grey lacquer stain
Pigmentet upholstery, ULTRA
Brandy / Cognac / Black
W 37 cm D 45 cm H 100 cm SH 72 cm



HIGH STOOL BACKREST
by Space Copenhagen

Item no. 01221

Item no. 01222

Item no. 01224



Oak, FSC® Certified / Beech, FSC Certified
Matt Lacquered Oak / Sirka Grey Stain Oak /
Black Lacquered Beech
Pigmentet upholstery, Natural / Black
W 46 cm D 38 cm H 97 cm SH 69 cm



SHELL DINING CHAIR
by Michael Dreeben

Item no. 02290
Seat no. 02223

Item no. 02291
Seat no. 02221

Item no. 02292
Seat no. 02222



Oak, FSC® certified
Matt Lacquered Oak / Sirka Grey Stain Oak /
Black Lacquered Oak
Pigmentet upholstery, ULTRA
Brandy / Cognac / Black
W 49 cm D 57 cm H 87 cm SH 45 cm



THE LOUNGE CHAIR
by Space Copenhagen

Item no. 01231

Item no. 01232

Item no. 01234



Oak, FSC® Certified / Beech, FSC Certified
Matt Lacquered Oak / Sirka Grey Stain Oak /
Black Lacquered Beech
Pigmentet upholstery, Natural / Black
W 65 cm D 69 cm H 72 cm SH 40 cm



ROCKER
by Shawn Place

Item no. 07010

Item no. 07011



Oak, FSC® certified
Matt Lacquered / Harness Whiskey
(Vegetable tanned leather)
Sirka Grey Stain / Harness Mustang
(Vegetable tanned leather)
W 59.5 cm D 86.5 cm H 78 cm SH 33 cm



Mater collection

NESTOR SIDECHAIR
by Tom Stepp



Solid Oak / Beech Wood, FSC® certified
Matt Lacquered / Natural Paper cord seat
Sirka Grey Stain / Natural Paper cord seat
W 50 cm D 53 cm H 76 cm SH 44 cm

Item no. 08206



Item no. 08106



NESTOR SIDECHAIR
by Tom Stepp



Solid Beech Wood, FSC® certified
Black Lacquered / Black Paper cord seat
Black Lacquered / Natural Paper cord seat
W 50 cm D 53 cm H 76 cm SH 44 cm

Item no. 08005



Item no. 08006

NEW



NESTOR ARMCHAIR
by Tom Stepp



Solid Oak / Beech Wood, FSC® certified
Matt Lacquered / Natural Paper cord seat
Sirka Grey Stain / Natural Paper cord seat
W 56 cm D 53 cm H 76 cm SH 44 cm ARH 68 cm

Item no. 08203



Item no. 08103



NESTOR ARMCHAIR
by Tom Stepp



Solid Beech Wood, FSC® certified
Black Lacquered / Black Paper cord seat
Black Lacquered / Natural Paper cord seat
W 56 cm D 53 cm H 76 cm SH 44 cm ARH 68 cm

Item no. 08004



Item no. 08003

NEW



BOWL TABLE, SMALL
by Ayush Kasliwal



Mango Wood, Sustainably harvested
Matt Lacquered / Sirka Grey Stain
/ Black Lacquered
Black steel legs
Small: Ø 40 cm H 38 cm

Item no. 01604



Item no. 01605



Item no. 01606



BOWL TABLE, MEDIUM
by Ayush Kasliwal



Mango Wood, Sustainably harvested
Matt Lacquered / Sirka Grey Stain
/ Black Lacquered
Black steel legs
Medium: Ø 46 cm H 52 cm

Item no. 01601



Item no. 01602



Item no. 01603



BOWL TABLE WASTE EDITION
by Ayush Kasliwal



Aluminium legs, Black powder coated
Upcycled coffee shells or wood waste mixed with
industrial plastic waste
Coffee Waste, dark (11601) / Coffee Waste, light (11602)
/ Wood Waste, grey (11603)
Ø 46 cm H 52 cm

Item no. 11601

NEW



Item no. 11602

NEW



Item no. 11603

NEW



BOWL TABLE, LARGE
by Ayush Kasliwal



Mango Wood, Sustainably harvested
Matt Lacquered / Sirka Grey Stain
/ Black Lacquered
Black steel legs
Large: Ø 52 cm H 46 cm

Item no. 01607



Item no. 01608



Item no. 01609



Mater collection

BOWL TABLE, X LARGE
by Ayush Kasliwal



Mango Wood, Sustainably harvested
Natural Matt Lacquered / Sirka Grey Stain
/ Black Lacquered
Black steel legs
X-Large: Ø 75 cm H 38 cm

Item no. 01611



Item no. 01612



Item no. 01613



ACCENT TABLE, SMALL
by Space Copenhagen



Oak, FSC® certified
Matt Lacquered / Sirka Grey Stain
/ Black Lacquered
Small: Ø 45 cm H 42 cm

Item no. 01411



Item no. 01401



Item no. 01421



ACCENT TABLE, MEDIUM
by Space Copenhagen



Oak, FSC® certified
Matt Lacquered / Sirka Grey Stain
/ Black Lacquered
Medium: Ø 45 cm H 55 cm

Item no. 01412



Item no. 01402



Item no. 01422



ACCENT TABLE, LARGE
by Space Copenhagen



Oak, FSC® certified
Matt Lacquered / Sirka Grey Stain
/ Black Lacquered
Large: Ø 60 cm H 55 cm

Item no. 01413



Item no. 01403



Item no. 01423



ACCENT TABLE, X LARGE
by Space Copenhagen



Oak, FSC® certified
Matt Lacquered / Sirka Grey Stain
/ Black Lacquered
X Large Ø 70 cm H 42 cm

Item no. 01418



Item no. 01408



Item no. 01428



ACCENT OVAL LOUNGE TABLE
by Space Copenhagen



Oak, FSC® certified
Matt Lacquered / Sirka Grey Stain
W 80 cm L 120 cm H 42 cm

Item no. 01414



Item no. 01404



BM5462 TABLE
by Børge Mogensen & Esben Klint



Solid oak wood, FSC® certified
Soaped finish
W 160 cm D 90 cm H 75.5 cm

Item no. 10011

NEW



ACCENT CAFÉ TABLE
by Space Copenhagen



Oak, FSC® certified
Matt Lacquered / Sirka Grey Stain
Ø 70 cm H 73 cm

Item no. 01416



Item no. 01406



BM5462, TABLEPLATE
by Børge Mogensen & Esben Klint



Solid beech wood, FSC® certified
Grey lacquered finish
(Table not included only tableplate)
W 40 cm D 90 cm H 2 cm

Item no. 10023

NEW



ACCENT DINING TABLE, Ø 110
by Space Copenhagen



Oak, FSC® certified
Matt Lacquered / Sirka Grey Stain
Ø 110 cm H 73 cm

Item no. 01415



Item no. 01405



Item no. 01425



MATER DINING TABLE
by Mater & Thomas Lykke



Beech, FSC® certified
Sirka Grey Stain
Black metal legs
W 220 cm D 100 cm H 73 cm

Item no. 01974



ACCENT DINING TABLE, Ø140
by Space Copenhagen



Oak, FSC® certified
Matt Lacquered / Sirka Grey Stain
Ø 140 cm H 73 cm

Item no. 01417



Item no. 01407



Item no. 01427



WINSTON DAYBED
by Eva Harlou



Oak, FSC® certified
Matt Lacquered, Cane work
Cushion in 50 % jute/50 % GOTS cotton
L 195 cm D 80 cm H 35.5 cm

Item no. 06001



Item no. 06002



WINSTON BENCH
by Eva Harlou



Oak, FSC® certified
Matt Lacquered, Cane work
L 120 cm D 40 cm H 45 cm

Item no. 06003



MOLLIS SOFA
by ByKato



Oak, FSC® certified. Black Lacquered
Kvadrat Re-wool 0218 upholstery
L 203 cm D 85 cm H 81 cm SH 37 cm
SD 73 cm

Item no. 05030



Lighting

Mater collection

TERHO LAMP, SMALL
by Maija Puoskari



Linden Wood, FSC® certified
Natural / Opal white - Black lacquered /
Smoked
Glass shade, mouth blown, Textile cord
E27 — Max 6W LED
Small: Ø 135 mm H 215 mm

Item no. 02301



Item no. 02311



TERHO LAMP, MEDIUM
by Maija Puoskari



Linden Wood, FSC® certified
Natural / Opal white - Black lacquered /
Smoked
Glass shade, mouth blown, Textile cord
E27 — Max 6W LED
Medium: Ø 240 mm H 215 mm

Item no. 02302



Item no. 02312



TERHO LAMP, LARGE
by Maija Puoskari



Linden Wood, FSC® certified
Natural / Opal white - Black lacquered /
Smoked
Glass shade, mouth blown, Textile cord
E27 — Max 6W LED
Large: Ø 330 mm H 300 mm

Item no. 02303



Item no. 02313



LIUKU BASE
by Maija Puoskari



Linden Wood, FSC® certified
Natural Matt Lacquered
Textile cord
GU10 — LED Max 4W
Ø 140 mm
Ø 140 mm H 195 mm

Item no. 02901



Item no. 02902



LIUKU PENDANT BALL
by Maija Puoskari



Linden Wood, FSC® certified
Natural Matt Lacquered
Glass shade, mouth blown, Textile cord
Transparent / Smoked
GU10 — LED Max 4W
Ø 195 mm H 345 mm

Item no. 02901
Shade no. 02911



Item no. 02901
Shade no. 02912



LIUKU PENDANT DROP
by Maija Puoskari



Linden Wood, FSC® certified
Natural Matt Lacquered
Glass shade, mouth blown, Textile cord
Transparent / Smoked
GU10 — LED Max 4W
Ø 195 mm H 405 mm

Item no. 02902
Shade no. 02911



Item no. 02902
Shade no. 02912



LIUKU BASE
by Maija Puoskari



Linden Wood, FSC® certified
Black Lacquered
Textile cord
GU10 — LED Max 4W
Ø 140 mm
Ø 140 mm H 195 mm

Item no. 02903



Item no. 02904



RAY PENDANT
by PEDERJESSEN



Oak, FSC® certified
Steel, White / Black painted, Textile cord
GU9 — LED Max 3.5W
Small: Ø 119 mm

Item no. 02501



Item no. 02502



LIUKU PENDANT BALL
by Maija Puoskari



Linden Wood, FSC® certified
Black Lacquered
Glass shade, mouth blown, Textile cord
Transparent / Smoked
GU10 — LED Max 4W
Ø 195 mm H 345 mm

Item no. 02903
Shade no. 02911



Item no. 02903
Shade no. 02912



RAY PENDANT
by PEDERJESSEN



Oak, FSC® certified
Steel, White / Black painted, Textile cord
GU9 — LED Max 3.5W
Medium: Ø 150 mm H 125 mm

Item no. 02503



Item no. 02504



LIUKU PENDANT DROP
by Maija Puoskari



Linden Wood, FSC® certified
Black Lacquered
Glass shade, mouth blown, Textile cord
Transparent / Smoked
GU10 — LED Max 4W
Ø 195 mm H 405 mm

Item no. 02904
Shade no. 02911



Item no. 02904
Shade no. 02912



RAY WALL LAMP
by PEDERJESSEN



Oak, FSC® certified
Steel, White / Black painted, Textile cord
GU9 — LED Max 3.5W
H 318 mm D 172 mm

Item no. 02511



Item no. 02512



FIREFLY
by José de la O

Steel, Copper / Black plated top
Glass — partly sandblasted
Black textile cord
GU10 — LED Max 4W
Ø 108 mm H 475 mm

Item no. 02401



Item no. 02411



RAY TABLE LAMP
by PEDERJESSEN



Oak, FSC® certified
Steel, White / Black painted, Textile cord
GU9 — LED Max 3.5W
Ø 195 mm H 405 mm

Item no. 02521



Item no. 02522



SHADE LIGHT PENDANT
by Space Copenhagen

Aluminium, hand spun
Clear Lacquered
Textile cord
E27 — Max 6W LED/energy saving
Ø 400 mm H 205 mm

Item no. 00208

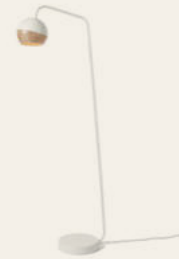


RAY FLOOR LAMP
by PEDERJESSEN



Oak, FSC® certified
Steel, White / Black painted, Textile cord
GU9 — LED Max 3.5W
Ø 15.3 cm H 125.4 cm

Item no. 02531



Item no. 02532



SHADE LIGHT PENDANT
by Space Copenhagen

Aluminium, hand spun
Clear Lacquered / Black powder coated
Textile cord
E27 — Max 6W LED/energy saving
Ø 600 mm H 305 mm

Item no. 00207



Item no. 00201



DOME LAMP
by Todd Bracher

Spun aluminium, steel base
Black painted
Textile cord
2 x E27 — Max 6W LED/energy saving
Ø 400 mm H 380 mm

Item no. 00301



BABY DOME LAMP
by Todd Bracher

Spun aluminium, steel base
Black / Brass
Textile cord
2 x E27 — Max 6W LED/energy saving
Ø 250 mm H 245 mm

Item no. 00311



Item no. 00317

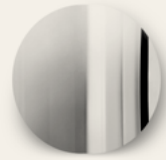


Objects

IMAGO MIRROR OBJECT
by PEDERJESSEN

Stainless Steel / Brass, polished
Ø 580 mm D 70 mm

Item no. 04090



Item no. 04091



Mater collection

SOPHIE MIRROR
by Jean François Merillou



Sustainably harvested mango wood
Leather rim, brown leather / black leather
Small: Ø 42 cm D 7 cm
Medium: Ø 50 cm D 7 cm
Large: Ø 61 cm D 7 cm

Item no. 02801



Item no. 02802



Item no. 02803



TRUMPET COAT STAND
by Space Copenhagen



70% upcycled aluminium waste
Polished / Black powder coated
Ø 64 cm H 200 cm

Item no. 00225



Item no. 00226



LOCUS LADDER
by Eva Harlou



Beech wood, FSC® Certified
Matt Lacquered
W 60 cm D 15 cm H 215

Item no. 06020



Material overview

**BEECH WOOD,
FSC CERTIFIED**

Variation will occur due
to natural materials



Dark Stained



Black Stained



Sirka Grey Stained

**MANGO WOOD,
FSC CERTIFIED**

Variation will occur due
to natural materials



**Natural Matt
Lacquered**



Black Stained



Sirka Grey Stained

**LINDEN WOOD,
FSC CERTIFIED**

Variation will occur due
to natural materials



**Natural Matt
Lacquered**



Black Stained

**OAK WOOD,
FSC CERTIFIED**

Variation will occur due
to natural materials



**Natural Matt
Lacquered**



Black Stained



Sirka Grey Stained



Soaped



Dark Stained

**PINE WOOD,
FSC CERTIFIED**

Variation will occur due
to natural materials

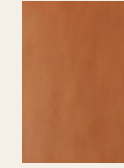


**Natural Matt
Lacquered**

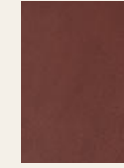
Material overview

LEATHER

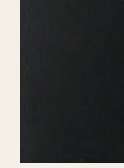
Variation will occur due
to natural materials



Ultra Brandy



Ultra Cognac



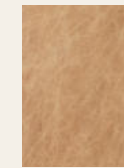
Ultra Black



Mustang



Whiskey



Natural



Black

ALUMINUM



Polished

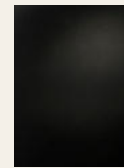


Black Coated

METAL



Brass



Black coated



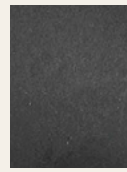
Copper plated

STAINLESS STEEL

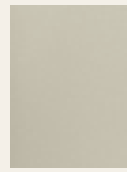


**UPCYCLED FISHING NETS
& OCEAN WASTE PLASTIC**

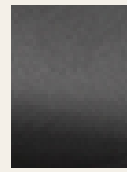
Variation will occur due
to upcycled materials



**Black,
Ocean Collection**



**Sand,
Ocean Collection**



**Black,
Nova Sea Collection**

**UPCYCLED PLASTIC BEER KEGS
& INDUSTRIAL PLASTIC WASTE**

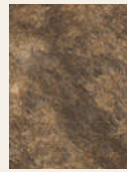
Variation will occur due
to upcycled materials



**Green
Ocean OC2 Collection**

**UPCYCLED BEER WASTE (MASK)
& INDUSTRIAL PLASTIC WASTE**

Variation will occur due
to upcycled materials



Beer Waste

**UPCYCLED COFFEE SHELLS
& INDUSTRIAL PLASTIC WASTE**

Variation will occur due
to upcycled materials



**Coffee Waste,
Light**



**Coffee Waste,
Dark**



**Coffee Waste,
Black**

**SAWDUST
& INDUSTRIAL PLASTIC WASTE**

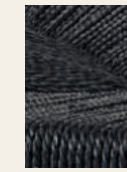
Variation will occur due
to upcycled materials



**Wood Waste,
Grey**

Material overview

**PAPER CORD,
FSC CERTIFIED**

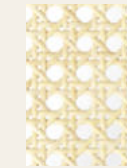


Black



Natural

CANE WORK



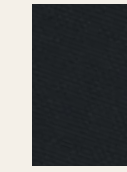
Natural

UPCYCLED TEXTILE

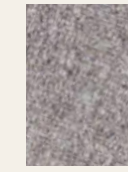
Variation will occur due
to upcycled materials



**Re-wool,
Kvadrat**



**CURA,
Gabriel® Fabrics**

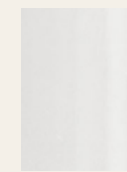


**Re-wool Molly 2,
Kvadrat Textile**

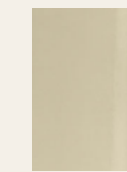


**CURA 64195,
Gabriel® Fabrics**

GLASS, BOROSILCATE



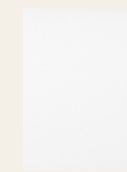
Transparent



Smoked



Violet



Opal white

Designers

Designers



Jørgen & Nanna Ditzel



Børge Mogensen



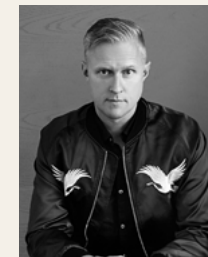
Space Copenhagen



Eva Harlou



Ayush Kasliwal



ARDE



Shawn Place



ByKato



PEDERJESSEN



Simon Astridge



Todd Bracher



Maija Puoskari



Jose de la O



Tom Stepp



Michael Dreeben



Jean François Merillou

Contact and info

Headquarter & Showroom

Mater A/S
Glentevej 47
DK - 2400 Copenhagen NV
Open by appointment only.

Customer service
+45 7026 4488
info@materdesign.com

Get in touch

Nordic

Christian Ravn Knoth
Regional Director Nordics
M +45 31 77 13 91
crk@materdesign.com

Brian Sommer Mailund
Contract Manager, Denmark
bma@materdesign.com
M +45 40 14 03 09

Rasmus Wester
Wholesale manager, Denmark
rwe@materdesign.com
M +45 28557899

Germany
sylke@materdesign.com
+49 (0) 1724590220

UK, International & Export
Chief Sales Officer
cer@materdesign.com
+45 3032 1377

Learn more

Newsletter
Please sign up at our webpage:
www.materdesign.com

Instagram
@materdesign

Thanks to

Carlsberg/A:gain
Novo Nordisk
BKI Coffee
Choice Hotels, Villa Copenhagen
Danish Technological Institute
Copenhagen University
Plastix
Letbek
Martin Munkebo
Aage Vestergaard Larsen
Kvist Industries
Kvadrat textiles
Gabriel textiles
FSC Denmark

**Considering the planet,
its resources and its people.**

[@materdesign](#)

www.materdesign.com