

SGABELLO ZEBRA POP

Design Luisa Battaglia



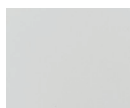
Scocca imbottita con anima in policarbonato.
Struttura a 4 gambe in acciaio tubolare ø mm 16 cromato.
Disponibile in due altezze.
Per uso interno.

*Upholstered main body with polycarbonate core.
4-leg frame in 16 mm diam. tubular chrome steel.
Available in two heights.
For indoor use.*

TESSUTI E COLORI

FABRICS AND COLOURS

CUOIO / LEATHER



CN 83
bianco
white

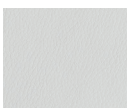


CN 84
nero
black

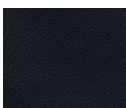


cuoio/leather
CN 84

SIMILPELLE / SIMIL-LEATHER

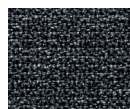


EP 74
bianco
white



EP 75
nero
black

TESSUTO / FABRIC



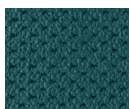
T3 25
grigio classico
classic grey



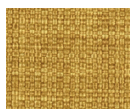
T4 52
arancio
orange



T4 55
nero
black



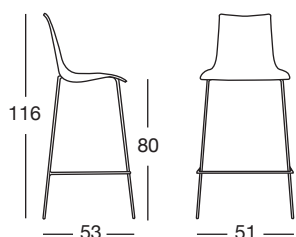
M2 09
verde pavone
peacock green



T5 27
zafferano
saffron

CODICE MODELLO

MODEL REFERENCE NUMBER

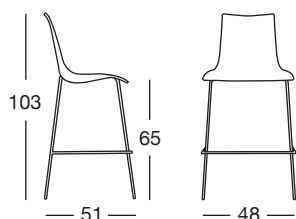


h.80
Art. 2555

Imballo: 2 pezzi
Packing: 2 pieces

Peso unitario Kg 8,100
Unit weight

Misure imballo 56,5x53,5x84 cm
Packing sizes



h.65
Art. 2556

Imballo: 2 pezzi
Packing: 2 pieces

Peso unitario Kg 7,700
Unit weight

Misure imballo 55,5x52,5x69 cm
Packing sizes

made in Italy

SCAB  **DESIGN**
since 1957

Sede/Headquarters: 25030 Coccaglio (BS) Italy - Via G. Monauni, 12
Divisione Commerciale Italia: Tel. 0307718.760/765/770 - Fax 0307718.777
www.scabdesign.it - e-mail: italia@scab.it
Export Department: Phone +390307718.720/725/726 - Fax +390307718.700
www.scabitaly.com - e-mail: export@scabitaly.com