

# elvang

RESPONSIBLE SINCE 2003



SUSTAINABLE ALPACA AND COTTON TEXTILES

2021



## Welcome to Elvang Denmark

We create luxurious sustainable textiles in a timeless Danish design. Made from exquisite natural alpaca and organic cotton fibres.

Since the very beginning in 2003 we have placed responsible thinking in the centre of everything that we do. We are sustainable. We act ethically.

This has led to the highest possible level of recognition within the World Fair Trade Organization (WFTO) as guaranteed member.

The WFTO recognition and our participation in the UN Global Compact Initiative ensure the protection of people, animals and the environment.

Sustainability is the goal. A goal that can be achieved by *acting* responsibly. And that is what we do.

We are sustainable. We act responsibly. And we have since 2003.

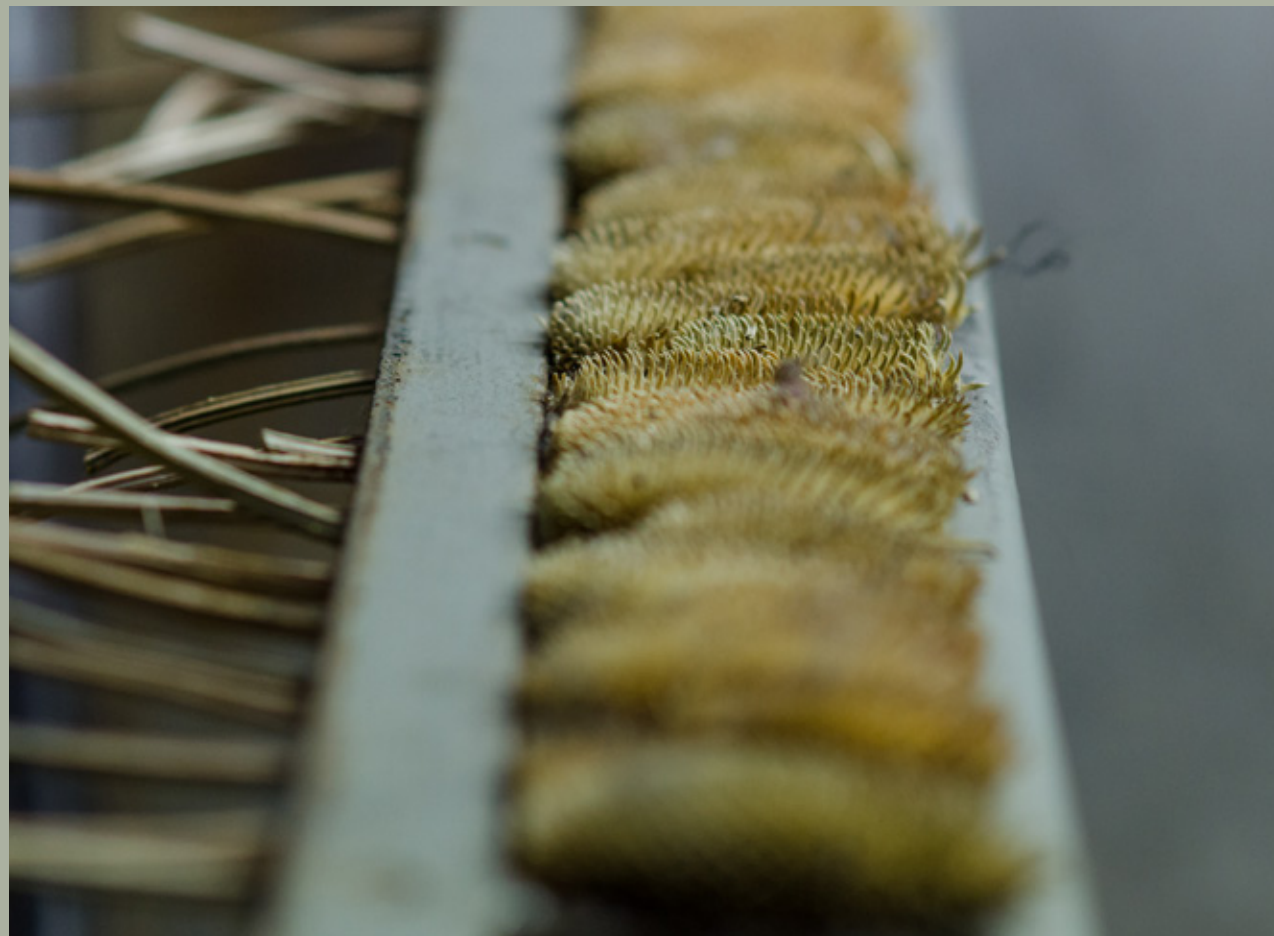
Tina & Lasse Elvang



A MINIMUM OF 80% OF THE WOOL  
THAT WE USE IS RECYCLED

WE USE ORGANIC GOTS CERTIFIED  
COTTON FIBRES

WE ACT RESPONSIBLY





## The Home Collection

Let's get comfy!  
Lean back, relax and imagine.  
With your favourite chocolate and a cup of coffee.

Go back to basics.  
In a design you won't get tired of.  
Made to last.  
Woven in recycled alpaca wool or  
GOTS certified organic cotton.

For today, tomorrow and forever.



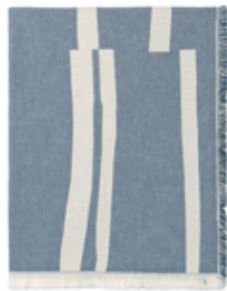


# LYME GRASS THROWS & CUSHIONS 50001 + 95501

100% organic cotton (GOTS certified)  
Throws: 130x180 cm/51x71 inches. Weight: app . 870 g  
Cushions: 50x50 cm/20x20 inches. Weight: app. 200 g

Lyme grass is a relaxed yet stylish collection of throws and cushions made of soft delicate organic GOTS certified cotton. The graphic pattern with the bright stripes along the length and the fresh colours will make Lyme grass an essential companion, when winter turns into Spring and life is lived in the garden and on the balcony. Lyme grass throw is artfully finished with eyelash fringes. A collection that can be used over and over again and can be machine washed.

Part of our  Collection



Blue  
5007



Blue  
5027



Green  
5005



Green  
5025



Grey  
5003



Grey  
5023



Yellow  
5006



Yellow  
5026



Beige  
5002



Beige  
5022



Rusty red  
5004



Rusty red  
5024





## IRIS THROWS & CUSHIONS 50003 + 95503

100% organic cotton (GOTS certified)  
 Throws: 130x215 cm/51x85 inches. Weight: app. 810 g  
 Cushions: 50x50 cm/20x20 inches. Weight: app. 200 g

Our Iris throw and cushion collection is produced in the wonderful soft and luxurious organic GOTS certified cotton. Iris is a decorative element with beautiful eyelash fringes on both throw and cushion - comfortable in any setting due to the soft cotton and the dynamic pattern. The cheerful colours make this collection perfect for the cosy moments spend on the sunny terrace and in the garden and add that special summery feeling.



Blue  
5063



Blue  
5062



Beige  
5061



Beige  
5060



Yellow  
5065



Yellow  
5064

Part of our



Collection





## THYME CUSHIONS & THROWS 50002 + 95502

100% organic cotton (GOTS certified)  
 Throws: 130x180 cm/ 51x71 inches. Weight app. 970 g  
 Cushions: 50x50 cm/20x20 inches. Weight: app. 240 g

Made of the wonderful soft GOTS certified organic cotton our Thyme throw and cushion collection is versatile and practical for all seasons. Thyme is beautifully combined with other textures, colours and pattern in our alpaca collections. Thyme is a fine piece of craftsmanship and with a design that from a distance appears uniform, but when looking closer the flowing expression comes to life. The throw has beautiful eyelash fringes on all four sides and the cushion envelope closure on the back. Use this soft and sumptuous collection both indoors and outdoors.



Beige  
5042



Beige  
5032



Grey  
5043



Grey  
5033



Rusty red  
5034



Rusty red  
5044



Blue  
5037



Blue  
5047



Yellow  
5046



Yellow  
5036



Green  
5045



Green  
5035

Part of our



Collection







## LINES THROWS 60006

100% sustainable baby alpaca wool  
130x190 cm / 51x75 inches. Weight: app. 740 g

Our Lines throw collection is beautifully woven in soft and pure 100% baby alpaca wool. Lines radiates classic elegance and the throw is a dream of a warm and sophisticated companion to the cold evenings. It has a high craftsman finish with fine eyelash fringes. Lines is offered in three gorgeous colours with a design inspired back to the 70s. The design really comes to life, when beautifully draped over a furniture. Minimalist yet classic.



Nude  
6132



Rusty red  
6131



Blue  
6130





## BLOCKS THROWS 60007

100% sustainable baby alpaca wool  
130x190 cm/51x75 inches. Weight app. 740 g

The Blocks throw is both understated and amazing. The design is inspired by the city of Prague with its distinguished ornamental characteristics of Art Nouveau. The pattern is understated, asymmetrical, elegant and with a graceful expression. Blocks comes in two colour combinations both with a natural look. Blocks is woven from 100% baby alpaca wool.



Camel  
6177



Beige  
6178



## CHECK THROWS 60008

100% sustainable baby alpaca wool  
130 x 190 cm/51 x 75 inches. Weight app. 740 g

Check is woven from the softest of the soft baby alpaca wool and has a classic expression with horizontal and vertical lines. The throw comes in traditional colours like grey, blue and green and surprises with the fine and thin lines in gorgeous contrast colours. Check creates a cosy and harmonic atmosphere for the quiet moments. The softness is extraordinary.



Blue/rusty red  
6196



Light grey/camel  
6195



Green/light green  
6197





## FISHBONE THROWS 70009



50% alpaca wool, 40% sheep wool & 10% other fibres  
130x190 cm / 51x75 inches. Weight app. 700 g

Our Fishbone throw is jacquard woven in recycled alpaca wool and the three beautiful colours enhance the trendy diagonal pattern. The sophisticated and elegant structure combined with the beautiful eyelash fringes creates a graphic throw that will embellish your living space.



Camel  
7190



Yellow ocher  
7191



Rusty red  
7192

Part of our



Collection



## SCOTCH THROWS 70010



50% alpaca wool, 40% sheep wool & 10% other fibres  
130x190 cm / 51x75 inches. Weight app. 560 g

Our Scotch throw is as the name indicates a celebration to the beautiful and traditional Scottish pattern. A symmetric and timeless design rooted back to ancient history in colours that fit a classic and elegant interior decoration.



Blue  
7131



Grey  
7130



Green  
7132

## INTERSECTION THROWS & CUSHIONS 7005 + 91001

50% alpaca wool, 40% sheep wool, 10% other fibres  
 Throws: 130 x 190 cm / 51 x 75 inches. Weight app. 510 g  
 Cushions: 30 x 50 cm / 12 x 20 inches

Our Intersection throw and cushion collection is inspired by the busy meeting of people, their lives and the surroundings. In subtle colours and with a sophisticated accent that intervene beautifully, the Intersection collection has a graphic minimalist expression.



Camel/white/grey  
7204



Rusty red/white/grey  
7205



Camel/white/grey  
9034



Rusty red/white/grey  
9035



Camel/grey/green  
7207



Ocean blue/white/grey  
7206



Camel/grey/green  
9037



Ocean blue/white/grey  
9036

Part of our  Collection





## SAILOR THROWS 60012

NEW  
In stock  
August

100% superfine alpaca wool  
130 x 180 cm/51 x 71 inches. Weight app. 700 g

Our Sailor throw collection with its maritime inspiration has an exciting pattern that assembles sailor knots and waves. The pattern is simple and decorative and the knitwear of alpaca wool offers ample softness and comfort. Sailor comes in classic brown and grey and will complete any home.



Brown  
6210



Grey  
6211



## CABLE THROWS 60013

NEW  
In stock  
August

50% alpaca wool, 50% sheep wool  
130 x 180 cm/51 x 71 inches. Weight app. 1000 g

Our Cabel throw collection has a wonderful structure that looks like twisted rope. It comes with a two-coloured knitted look and features a beautiful rib stitch. Cabel is masculine and cosy like a sweater perfect to snuggle up in.



Brown/black  
6220



Grey/black  
6221

## VENICE THROWS 60004

74% superfine alpaca wool, 26% sheep wool  
130 x 190 cm/51 x 75 inches. Weight app. 675 g

Venice is a wonderfully light, soft and airy throw with delicate eyelash fringes.  
The throw is double-faced and the douce colour palet and the sumptuous textures make this beauty an essential home accessory.



White/latte  
6151



White/grey  
6150



White/nude  
6152



White/yellow ocher  
6154



White/grey blue  
6153



White/rusty red  
6155



## SQUARE THROWS 70006

50% alpaca wool, 40% sheep wool, 10% other fibres  
130 x 190 cm/51 x 75 inches. Weight app. 550 g

Woven in the soft, warm and recycled alpaca wool our Square collection is the perfect companion to cosy up to both in- and outdoors. The understated tartan pattern with its crisscrossing horizontal and vertical lines makes this a true Elvang classic. The pattern in multiple douce colours resembles a stone mosaic and will add a delicate graphic look to the living space.



Light grey  
7115



Rusty red  
7116



Light green  
7117



## DIAGONAL THROWS 70008

50% alpaca wool, 40% sheep wool, 10% other fibres  
130 x 190 cm/51 x 75 inches. Weight app. 790 g

Our Diagonal throw is characterized by its chunky, simple and diagonal structure. The throw has a knitted look in an elegant and timeless design with beautiful eyelash fringes.



Beige/latte  
7451



White/light grey  
7450



Grey/light grey  
7452



Part of our



Collection





Part of our  Collection



## BASKET THROWS 70007

35% alpaca wool, 35% sheep wool, 30% other fibres  
130 x 200 cm/51 x 79 inches. Weight app. 970 g

The Basket collection is inspired by a beautifully woven basket characterized by its vivid structure. If you love a big and chunky throw to keep you warm with your favourite book and a cup of coffee, Basket is an obvious contender. An elegant and timeless design.



Off white  
7400



Light grey  
7401



Lagoon  
7403



Orion blue  
7402



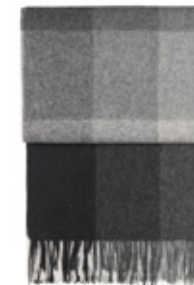
## INCA STONES THROWS 70004

50% alpaca wool, 40% sheep wool, 10% other fibres  
130 x 200 cm/51 x 79 inches. Weight app. 560 g

The Inca Stones throws are inspired by the famous Inca buildings and their zigzag architectural heritage. The pattern resembles a stone mosaic and consists of tone-on-tone colours, which translate into an amazing and surprising pattern.



Brown  
7108



Grey  
7109



Red  
7110



Yellow  
7111



## HORIZON THROWS & CUSHIONS 70003 + 90003 + 96003

50% alpaca wool, 40% sheep wool, 10% other fibres  
 Throws: 130 x 200 cm/51 x 79 inches. Weight app. 560 g  
 Cushions: 50 x 50 cm/20 x 20 inches & 40 x 60 cm/16 x 24 inches

Where sea and sky meet. Gradually changing from light to dark in subtle ways, our Horizon collection adds a cosy, natural and beautiful element to the interior. It is a true testimony to a weaver's talent. The Horizon collection consists of both throws and cushions in a range of colours.



Part of our  Collection



Botanic green  
9504



Evergreen  
9536

Botanic green  
7501



Botanic green  
9503

Evergreen  
7511



Evergreen  
9535



Midnight blue  
9506



Dark blue  
9532

Midnight blue  
7502

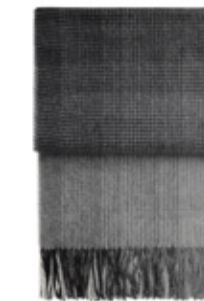


Midnight blue  
9505

Dark blue  
7509



Dark blue  
9531



Grey  
9502

Grey  
7500



Grey  
9501

Part of our  Collection



## VULCANIC THROWS 60005

89% superfine alpaca wool, 11% nylon  
130 x 190 cm/51 x 75 inches. Weight app. 640 g

A volcano is one of nature's most fascinating phenomenon – bombastic and warm. And our Vulcanic throws are just that: bombastic and warm. They are woven from an amazing yarn called bouclé, which offers the throw an unique form and texture. Vulcanic comes in three beautiful and warm colours and will fit effortlessly into any home.



Chocolate/white  
6110



Dark grey/light grey  
6112



Rusty red/nude  
6111



## MANHATTAN THROWS & CUSHIONS 70002 + 90002 + 96002

50% alpaca wool, 40% sheep wool, 10% other fibres  
 Throws: 130 x 200 cm/51 x 79 inches. Weight app. 560 g  
 Cushions: 50 x 50 cm/20 x 20 inches & 40 x 60 cm/16 x 24 inches

The Manhattan collection is inspired by the way the straight streets and right angles create square blocks in New York's borough of Manhattan. Lines crisscross and create contrast and vibrancy. The design creates a balance between the classic, timeless and forward-thinking modernism.



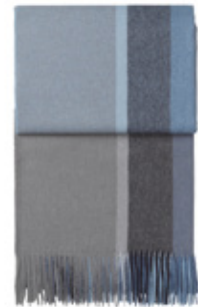
Evergreen/botanic green  
7062



Evergreen/botanic green  
9483



Evergreen/botanic green  
9481



Steel blue/dusty ocean  
7068



Steel blue/dusty ocean  
9443



Steel blue/dusty ocean  
9441



Natural  
7060



Natural  
9403



Natural  
9401



Part of our



Collection

Part of our  Collection



Dark blue/asphalt  
7061



Dark blue/asphalt  
9473



Dark blue/asphalt  
9471



Terracotta/red magma  
7065



Terracotta/red magma  
9413



Terracotta/red magma  
9411



Yellow ocher/smoked glass  
7066



Yellow ocher/smoked glass  
9423



Yellow ocher/smoked glass  
9421



Bordeaux/red  
7063



Bordeaux/red  
9493



Bordeaux/red  
9491

## CLASSIC THROWS & CUSHIONS 70001 + 90001 + 96001

50% alpaca wool, 40% sheep wool, 10% other fibres  
 Throws: 130 x 200 cm/51 x 79 inches. Weight app. 560 g  
 Cushions: 50 x 50 cm/20 x 20 inches & 40 x 60 cm/16 x 24 inches

Part of our  Collection

The Classic collection is beautiful simplicity in a range of classic colours that never go out of style.  
 An uncomplicated and minimalistic design – a true classic in every home.





Part of our  Collection



Grey blue  
7085



Grey blue  
9685



Grey blue  
9185



Midnight blue  
7030



Midnight blue  
9630



Midnight blue  
9130



Dark blue  
7082



Dark blue  
9682



Dark blue  
9182



Lagoon  
7035



Lagoon  
9635



Lagoon  
9135



Botanic green  
7031



Botanic green  
9631



Botanic green  
9131



Evergreen  
7083



Evergreen  
9683



Evergreen  
9183



Nude  
7084



Nude  
9684



Terracotta  
7022



Terracotta  
9622



Nude  
9184



Terracotta  
9122



Plum  
7032



Plum  
9632



Red  
7080



Red  
9680



Plum  
9132



Red  
9180



Yellow ocher  
7020



Yellow ocher  
9620



Bordeaux  
7081



Bordeaux  
9681



Yellow ocher  
9120



Bordeaux  
9181

Part of our



Collection





## LUXURY THROWS 60001

100% sustainable baby alpaca wool  
130 x 200 cm/51 x 79 inches. Weight app. 600 g

The Luxury collection is made of 100% sustainable baby alpaca wool. The name is inspired by the feeling of luxury that you experience, when the amazingly soft sustainable baby alpaca wool caresses your skin. The collection comes in a variety of natural colours.



Beige  
6001



Latte  
6000



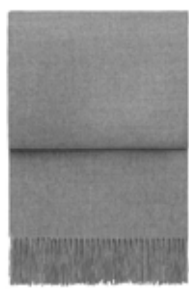
Coffee  
6003



Camel  
6044



Off white  
6004



Light grey  
6005



Grey  
6006



Dark grey  
6007



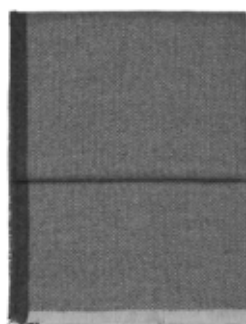
## HERRINGBONE THROWS 60009

100% sustainable baby alpaca wool  
130 x 190 cm/51 x 75 inches. Weight app. 500 g

Our Herringbone throws are made from the amazingly soft sustainable baby alpaca wool with a distinguished and traditional herringbone pattern. A classic silky soft throw with a decorative and exquisite expression finished with beautiful and calm eyelash endings. Herringbone is a luxurious addition to any sofa or bed and evokes that relaxed feel.



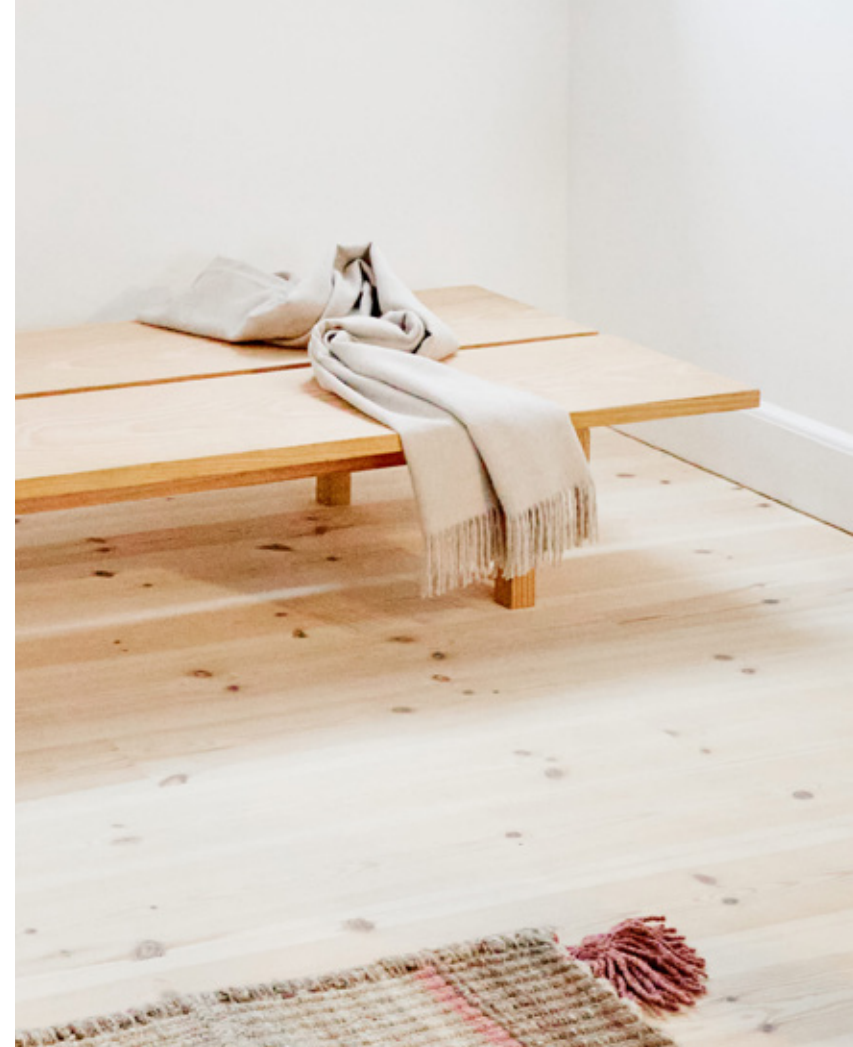
Chocolate/beige  
6171



Light grey/grey  
6170



Dark blue/grey  
6172





## WHISPER THROWS 60002

100% sustainable baby alpaca wool  
130 x 200 cm/51 x 79 inches. Weight app. 600 g

Whisper is immensely soft, warm and beautiful. It has an elegant yet classic expression. The mélangé squares add an extra element, which makes Whisper recognizable, modern and timeless.



Beige/white  
6164



Flint grey/cream  
6160



Black/cream  
6162



Delph/atlanic  
6165

## SUPERIOR THROWS 60003

100% sustainable baby alpaca wool  
130 x 200 cm/51 x 79 inches. Weight app. 600 g

Our Superior throws are made of the finest sustainable baby alpaca wool. In this collection natural pureness and design come together in a calm and classic expression. The softness is extraordinary.



Light grey/white  
6101



Beige/white  
6100



Dark grey/white  
6102

## RAINDROPS THROWS 60011

100% sustainable baby alpaca wool  
130 x 180 cm/51 x 71 inches. Weight app. 700 g

The Raindrops collection is knitted in the purest sustainable baby alpaca wool.  
The design is made out of love for thoughtful poetry, feminine elegance  
and the wonderful feeling of raindrops touching your cheek on a warm summer day.



Ivory  
6200



Grey  
6201



Royal blue  
6202



## WILDFLOWER THROWS 60010

100% sustainable baby alpaca wool  
135 x 200 cm/53 x 79 inches. Weight app. 600 g

The Wildflower collection brings the natural, wild and extravagant flowers to mind.  
Simplified but with a strong expression. The throws are jacquard woven in the softest sustainable baby alpaca wool  
and with different expressions on each side, Wildflower offers both diversity and elegant beauty.



Beige/white  
6120



Light grey/dark grey  
6122



Blue grey/beige  
6123



## The Sustainable Scarf Collection

Complete the look!  
In a timeless design.  
By honest materials.

We shy away from fast fashion.

For today, tomorrow and forever.  
Made for long-lasting life.



## ROME SCARVES 40001 + 40002

70% sustainable baby alpaca wool, 30% silk  
50 x 50 cm/20 x 20 inches 90 x 90 cm/36 x 36 inches

Feminine and with an incredible soft and light feel texture, this delicate scarf is absolutely magnificent. It is woven in a mix of sustainable baby alpaca wool and silk with fine elegant eyelash fringes. The scarf has a simple graphic pattern inspired by the architectural lines found in nature. The design comes in three beautiful douche colour combinations.

Size 50 x 50 cm/20 x 20 inches.



Yellow/nude/peach  
3920



Green/lagoon/rusty  
3922



Blue/pale blue/cognac  
3921

Size 90 x 90 cm/36 x 36 inches.



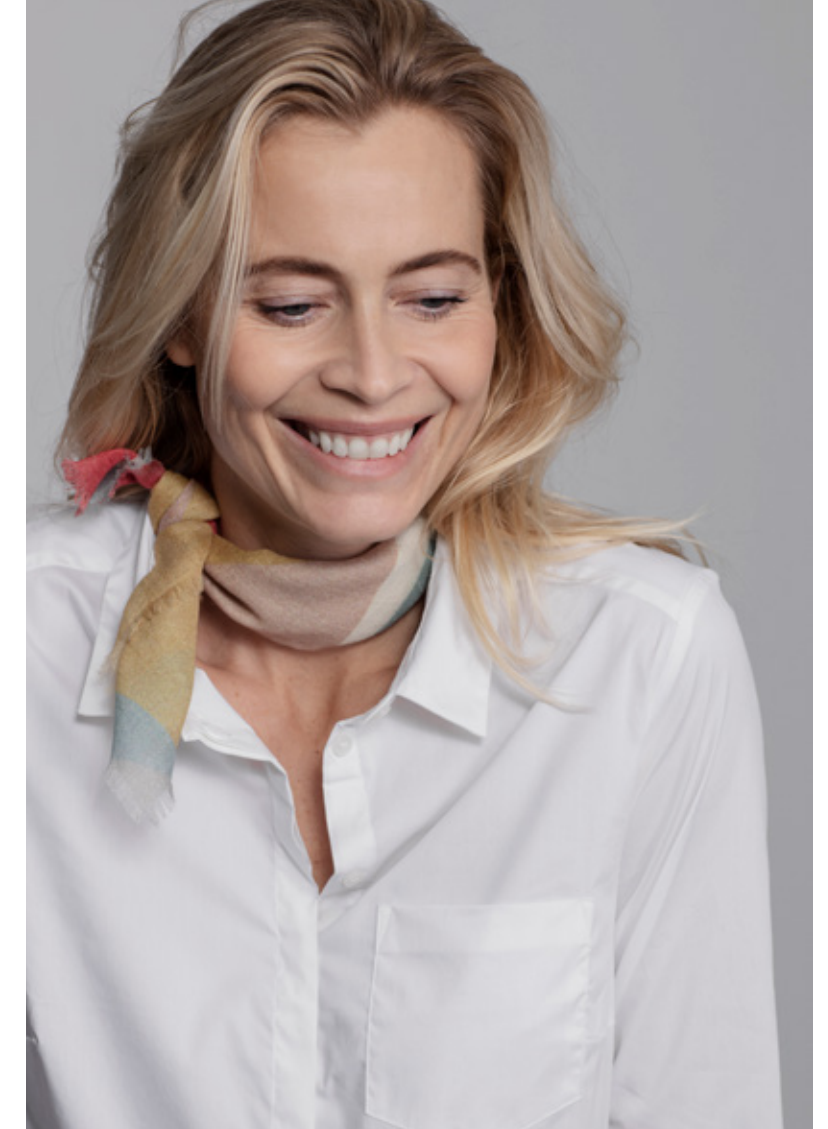
Yellow/nude/peach  
3900



Green/lagoon/rusty  
3902



Blue/pale blue/cognac  
3901





## MILAN SCARVES 40003

70% sustainable baby alpaca wool, 30% silk  
120 x 120 cm/47 x 47 inches. Weight app. 90 g

Feminine and with a light feel texture, this delicate scarf woven in a wonderful mix of sustainable baby alpaca wool and silk is absolutely magnificent. The design is inspired by the detailed architecture of the churches, buildings and monuments of Milan. The scarf comes in three beautiful colours completed with fine eyelash fringes.



Light grey  
4150



Black  
4151



Blue  
4152



## BERLIN SCARVES 40004

70% sustainable baby alpaca wool, 30% silk  
70 x 180 cm/28 x 71 inches. Weight app. 180 g

Berlin is a sophisticated scarf with an exiting structure. The scarf is elegant and feminine and the bold graphic design will pep up any outfit. Thinly woven in a combination of sustainable baby alpaca wool and silk, Berlin is a must have in your wardrobe.



Grey  
4170



Black  
4171



Blue  
4172





## MADRID SCARVES 40005

100% sustainable baby alpaca wool, Alcantara fringes  
50 x 196 cm/20 x 77 inches. App. 240 g

Madrid is a remarkable scarf with long fringes made of Alcantara.  
This daring scarf is perfect for adding an unexpected touch to a classic outfit.  
It is medium chunky, comfortable and very soft made from sustainable baby alpaca wool.



Sand  
4140



Light grey  
4141



## EDINBURGH SCARVES 40006

70% sustainable baby alpaca, 7% wool, 23% nylon  
50 x 180 cm/20 x 71 inches. Weight app. 350 g

The Edinburgh scarf is amazing, soft and very chunky. The herringbone pattern is striking in combination with the short eyelash fringes, and the featuring edges. The scarf is perfect for those chilly winter months and comes in five beautiful colours.



Camel/beige  
4290



Grey/light grey  
4291



Ocean blue/navy  
4294



Army/light green  
4293



Nude/chocolate  
4292





## PRAGUE SCARVES 40007

100% superfine alpaca wool  
70 x 200 cm/28 x 79 inches. Weight app. 430 g

Prague is a understated and amazing scarf. The design is inspired by the city of Prague with its distinguished ornamental characteristics of Art Nouveau. The pattern is understated, asymmetrical, elegant and with a graceful expression. It comes in two colour combinations both with a natural look.



Camel/light grey  
4280



Beige/dark grey  
4281



## TOKYO SCARVES 40008 + 40009

100% sustainable baby alpaca wool  
30 x 180 cm/12 x 71 inches. Weight app. 125 g  
50 x 180 cm/20 x 71 inches. Weight app. 165 g

Tokyo is a soft rib knit scarf in the wonderful sustainable baby alpaca wool. A classic scarf in contemporary natural colours designed for both men and women. Tokyo comes in two sizes and is ideal for keeping you comfortable and toasty.

Size 30 x 180 cm/12 x 71 inches.



White  
4180



Latte  
4181



Grey  
4182

Size 50 x 180 cm/20 x 71 inches.



White  
4190



Latte  
4191



Grey  
4192





## LONDON SCARVES 40011

100% sustainable baby alpaca wool  
 30 x 160 cm/12 x 63 inches. Weight app. 390 g

London is a fine and delicate scarf for both men and women. The design is tartan patterned and inspired by the vibrant, highly energized feel of the city. Creativity is sparked by walking the streets of London and thus infused with an unsuspected touch of colour in an otherwise classic scarf. The scarf comes in three beautiful colour combinations.



Grey/black/beige  
 4230



Grey/blue/rusty red  
 4231



Beige/lagoon/chocolate  
 4232



## BERGEN SCARVES 40012

100% sustainable baby alpaca wool  
30 x 160 cm / 12 x 63 inches. Weight app. 385 g

Bergen is a thin, delicate gentlemen scarf. It is woven in sustainable baby alpaca wool and the design is simple, understated and straightforward. It has a calm and elegant expression and comes in three colour combinations.



Grey/black  
4130



Blue/rusty red  
4131



Rusty red/curry  
4132





## TRAVELLER SCARVES 40013

100% sustainable baby alpaca wool  
70 x 200 cm/28 x 79 inches. Weight app. 200 g

The Traveller scarf is light, airy and elegant. It is classic and timeless and a perfect element to complete the look. The scarf is double woven in the most wonderful soft sustainable baby alpaca wool with a very delicate structure.



Nude/ivory  
4210



Light grey/ivory  
4200



Beige/ivory  
4207



Army/ivory  
4209



Dark grey/black  
4208



Navy/grey  
4202

## STOCKHOLM SCARVES 40014

100% sustainable baby alpaca wool  
50 x 200 cm/20 x 79 inches. Weight app. 225 g

The Stockholm scarf is inspired by the beautiful Scandinavian capital and its spiked filled skyline. It can be worn by both men and women and is woven in the most wonderful soft sustainable baby alpaca wool.



Beige  
4244



Nude  
4245



Light grey  
4241



Army  
4246



Lagoon  
4243



Navy  
4242



Black  
4240



## HIS & HER SCARVES 40010

100% sustainable baby alpaca wool  
30 x 200 cm/12 x 79 inches. Weight app. 170 g

The His & Her scarf collection is double woven in the luxurious sustainable baby alpaca wool. One colour on one side and a subtle contrast on the other add a delicate and refreshing touch to this very classic scarf. A must have for both women and men.



Beige/off white  
4109



Nude/grey  
4122



Army/dusty green  
4123



Navy/grey  
4117



Black/grey  
4108



Curry/beige  
4120



Rusty red/light grey  
4121







COPENHAGEN SCARVES 40015

50% alpaca wool, 40% wool, 10% other fibres  
70 x 200 cm / 28 x 79 inches. Weight app. 295 g

The Copenhagen scarf is designed in a classic checked pattern that leads your thoughts to the well-known Scottish checks. The full extent of the design will come to life, when it is slung over your shoulder. In four different colour combinations.



Navy  
4260



Green  
4261



Curry  
4265



Rusty red  
4266

Part of our



Collection



## OSLO SCARVES 40016

60% sustainable baby alpaca wool, 5% merino wool, 35% polyester  
60 x 190 cm/24 x 75 inches. Weight app. 200 g

Oslo is a cosy scarf in a classic jersey knit suitable for both women and men.  
A piece that never goes out of style.



Sand  
4250



Grey  
4251



## PARIS SCARVES 40017

60% sustainable baby alpaca wool, 5% merino wool, 35% polyester  
65 x 190 cm/26 x 75 inches. Weight app. 200 g

Paris is a feminine scarf with a subtle and very decorative hole knitted pattern.  
Ideal for everyday use with an understated elegance.



Light grey  
4270



Brown  
4271

ELVANG-DENMARK.DK

FACEBOOK @ELVANGDENMARK

INSTAGRAM @ELVANG\_DENMARK

**Elvang Showroom & Headquarter**

Elvang Denmark A/S  
Banevej 7  
4180 Sorø (Soroe)  
Denmark

+45 3537 8989  
info@elvangdenmark.dk

**Elvang Warehouse**

Smedevej 24  
4180 Sorø (Soroe)  
Denmark



Art direction & graphic design  
Studio Marie Brodersen

Photos  
Line Thit Klein, Trine Frölich,  
Jenny Sundby & Marie Brodersen

