

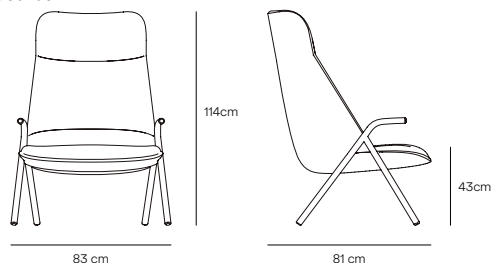
Dins High armchair

Dins is an armchair where two opposite concepts are combined, that come together coexisting in a harmony of proportions.

The lightness of the Dins metal structure is fully integrated with the spaciousness of the upholstered body, thus obtaining a collection with a contemporary character and perfectly balanced.

Designed by Yonoh

Measures



Models



Finishes

Metallic structure



Black

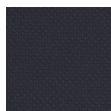
Upholstery

RONDO by Gabriel
99% post-consumer recycled polyester
1% polyester
70,0000 martindale
Flammability BS EN 1021 1&2 Cigarette
and Match, CA TB 117-2013

Teulat offers tailored upholstery for this product.
Contact us at design@teulat.es for more information.



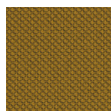
Rondo 61200



Rondo 66201



Rondo 68226



Rondo 62108

Environmental certificates STANDARD 100 by
OEKO-TEX®, EU Ecolabel

Downloads

Dossier 345.17 KB ↓

File 3ds 2.61 MB ↓

File obj 2.85 MB ↓

Samples

Teulat supplies samples of all the finishes.
Contact us at design@teulat.es for more information.

More from the collection



Low armchair

Teulat seeks to create unique spaces providing personal and intimate comfort to transform a house into a true home, converting spaces where we inhabit into places where we live.

Address

Enlace Verola SN,
46430 Valencia, España

Email

info@teulat.es

Telephone

+34 96 116 30 05