

*by Lassen.*  
Copenhagen

Upholstery Programme EU  
2023



*Upholstery*



## By Lassen Upholstery Program

The by Lassen Upholstery Program is an overview of the textile and leathers available for by Lassen upholstered furniture. All textile and leather options are available in all colors. You'll find over 100 fabric and leather options, with the most popular configurations available with expedited delivery in our Quick Ship program.

Custom upholstery orders from our by Lassen Upholstery Program (SPEC) are ready to ship with standard delivery lead times. Our Fixed Combinations listed in this Brand Book are suggested upholsteries selected by our design team, and deliver with standard lead times. We are happy to upholster furniture using customer's own materials (COM) with extended delivery lead times, upon fabric approval. COM products are to be calculated by PCIT if in textile and PCIL if in leather, excluding the price of the fabric.

Please note that the color references in this upholstery programme are only intended as a guide. For further information please see manufacturer websites, or contact your local by Lassen Sales Representative for samples or further information.

kvadrat.dk  
sahco.com  
nevotex.com  
jab.de  
hbftextiles.com  
danishartweaving.com  
dedar.com



## Upholstery Selection & Furniture

Use table to determine the upholstery options available for fabric-covered items.

	THE TIRED MAN	MY OWN CHAIR	INGEBORG	VILHELM	MINGLE	CONSTANCE
<b>TEXTILE</b>						
<b>PRICE CATEGORY 0</b>						
MENU Bouclé	•	•	•	•	•	•
<b>PRICE CATEGORY 1</b>						
Champion, JAB	•	•	•	•	•	•
City Velvet, JAB	•	•	•	•	•	•
Hot Madison Reboot, JAB	•	•	•	•	•	•
Maple, Kvadrat	•	•	•	•	•	•
Remix 3, Kvadrat	•	•	•	•	•	•
Re-Wool, Kvadrat	•	•	•	•	•	•
Illusion, Artificial Leather, Nevotex	•	•	•	•	•	•
<b>PRICE CATEGORY 2</b>						
Canvas 2, Kvadrat	•	•	•	•	•	•
Clay, Sahco, Kvadrat	•	•	•	•	•	•
Colline 2, Kvadrat	•	•	•	•	•	•
Fiord 2, Kvadrat	•	•	•	•	•	•
Hallingdal 65, Kvadrat	•	•	•	•	•	•
Moss, Sahco, Kvadrat	•	•	•	•	•	•
Reflect, Kvadrat	•	•	•	•	•	•
Savanna, Kvadrat	•	•	•	•	•	•
Steelcut 2, Kvadrat	•	•	•	•	•	•
Steelcut Trio 3, Kvadrat	•	•	•	•	•	•
<b>PRICE CATEGORY 3</b>						
Arctic, JAB	•	•	•	•	•	•
Safire, Sahco, Kvadrat	•	•	•	•	•	•
Vidar 4, Kvadrat	•	•	•	•	•	•
Zero, Sahco, Kvadrat	•	•	•	•	•	•
<b>PRICE CATEGORY 4</b>						
Doppiopanama, Dedar	•	•	•	•	•	•
Grand Mohair, Danish Art Weaving	•	•	•	•	•	•
Lupo, Dedar	•	•	•	•	•	•

*O*

*Textile Category 0*



# MENU Bouclé

Textile

Price category 0  
Materials 78% Acrylic,  
20% Polyester, 2% Viscose  
Martindale 60.000  
Lightfastness 5-7  
Pilling 4



# MENU Bouclé

Textile

Price category 0  
Materials 78% Acrylic,  
20% Polyester, 2% Viscose  
Martindale 60.000  
Lightfastness 5-7  
Pilling 4



02



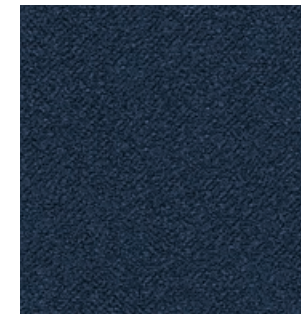
06



08



07



15



16



20



**1**

*Textile Category 1*



# Champion

Textile

Price category 1  
Manufacturer JAB  
Materials 100% Polyester  
Martindale 70.000  
Lightfastness 5



# Champion

Textile

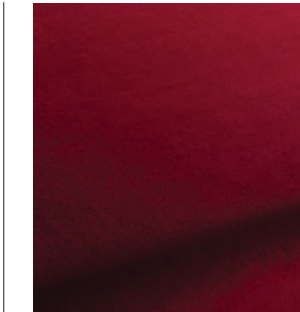
Price category 1  
Manufacturer JAB  
Materials 100% Polyester  
Martindale 70.000  
Lightfastness 5



1-3114-010



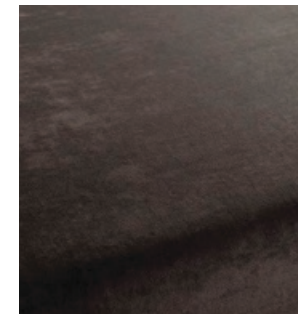
1-3114-011



1-3114-012



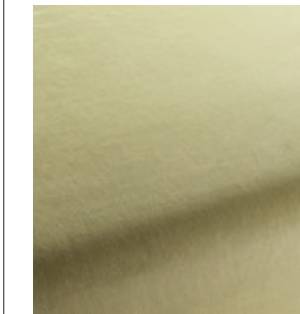
1-3114-020



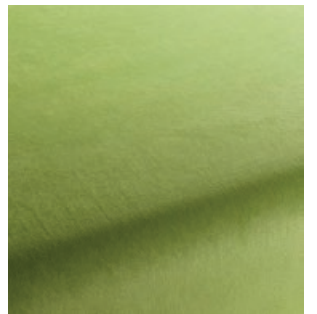
1-3114-021



1-3114-022



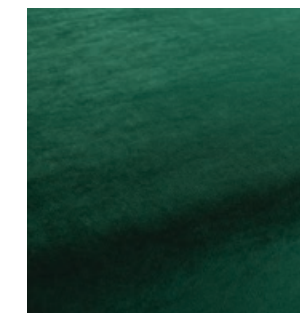
1-3114-030



1-3114-031



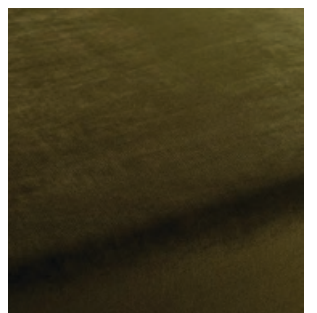
1-3114-032



1-3114-033



1-3114-034



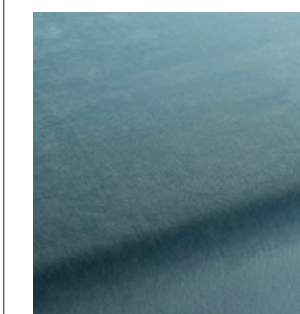
1-3114-035



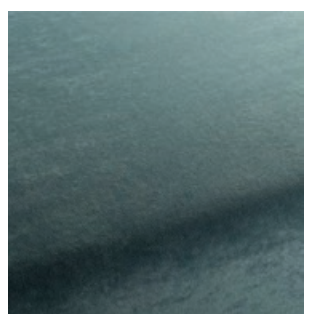
1-3114-040



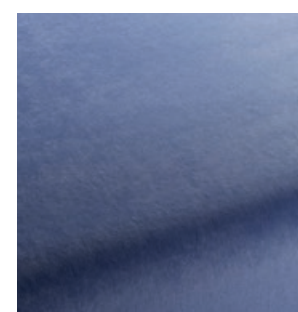
1-3114-041



1-3114-050



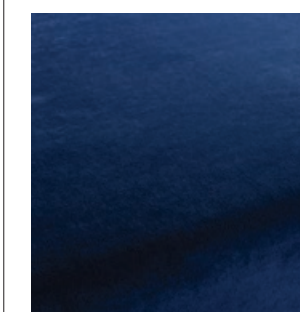
1-3114-051



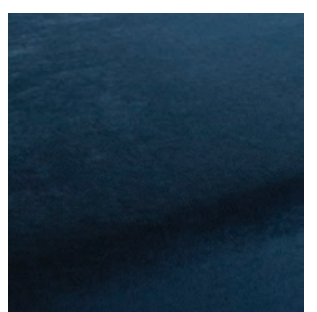
1-3114-052



1-3114-053



1-3114-054



1-3114-055

# Champion

Textile

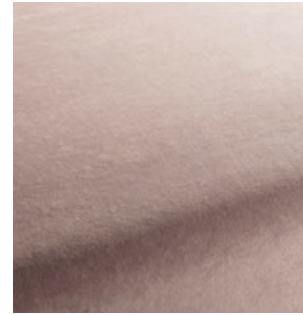
Price category 1  
Manufacturer JAB  
Materials 100% Polyester  
Martindale 70.000  
Lightfastness 5



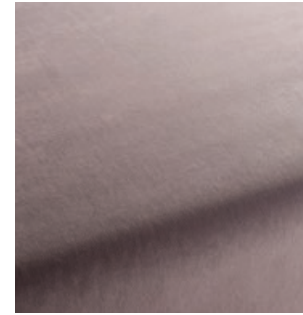
1-3114-060



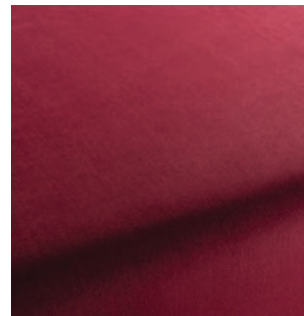
1-3114-061



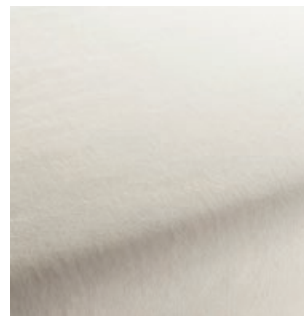
1-3114-062



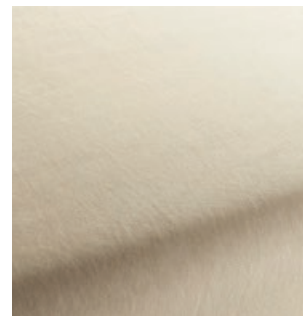
1-3114-063



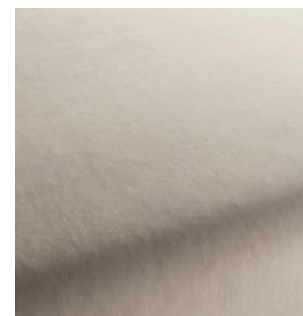
1-3114-064



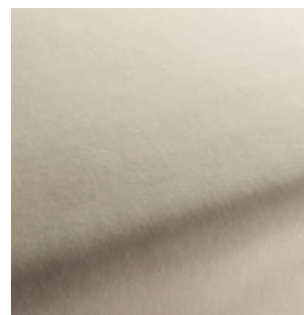
1-3114-070



1-3114-071



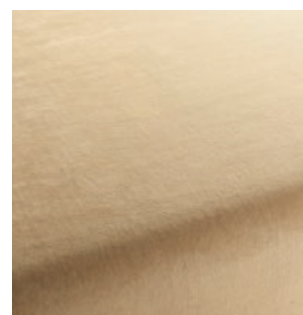
1-3114-072



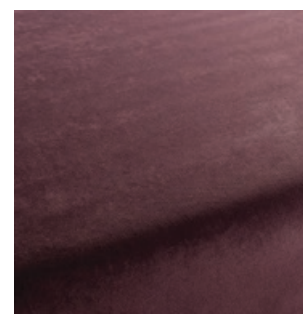
1-3114-073



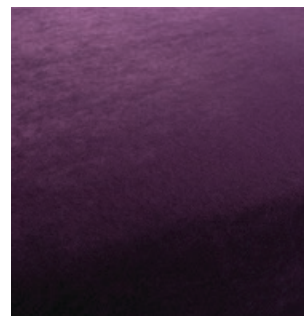
1-3114-074



1-3114-075



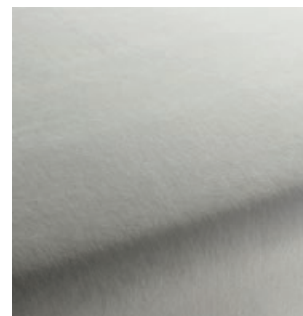
1-3114-080



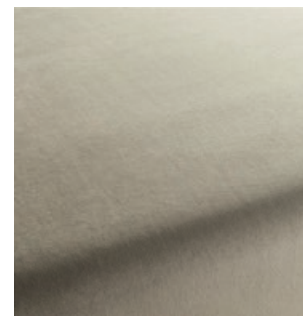
1-3114-081



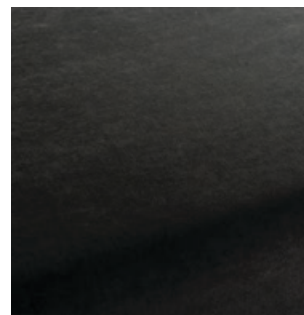
1-3114-082



1-3114-091



1-3114-092





# City Velvet

Textile

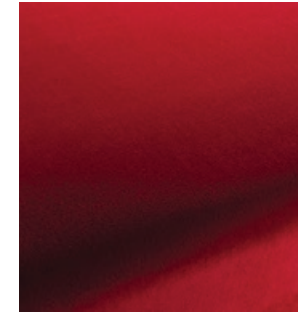
Price category 1  
Manufacturer JAB  
Materials 100% Polyester  
Martindale 100.000  
Lightfastness 3-5  
Pilling 4-5



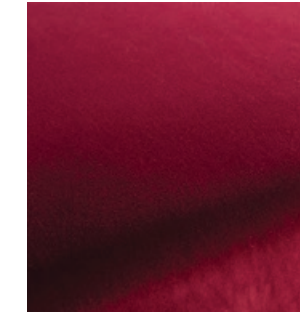
# City Velvet

Textile

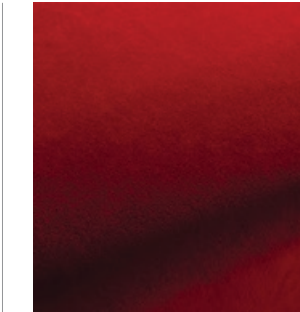
Price category 1  
Manufacturer JAB  
Materials 100% Polyester  
Martindale 100.000  
Lightfastness 3-5  
Pilling 4-5



CA7832-010



CA7832-011



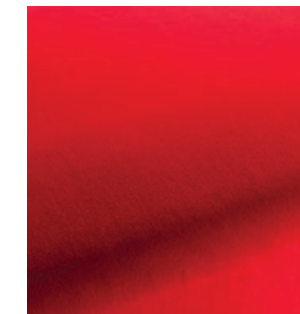
CA7832-012



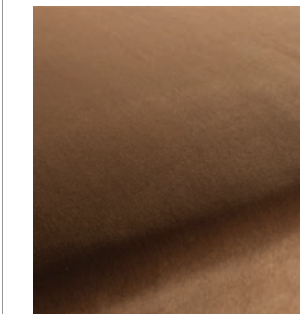
CA7832-013



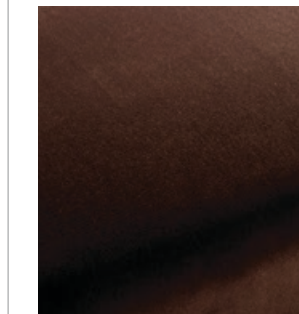
CA7832-014



CA7832-015



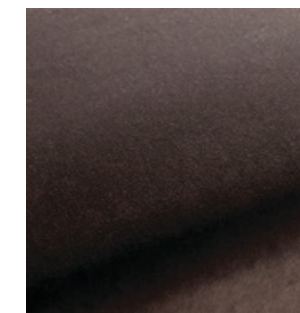
CA7832-020



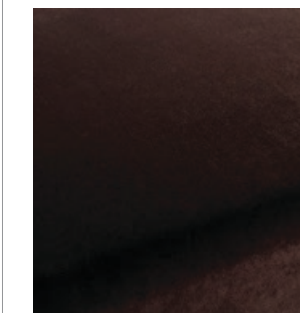
CA7832-021



CA7832-022



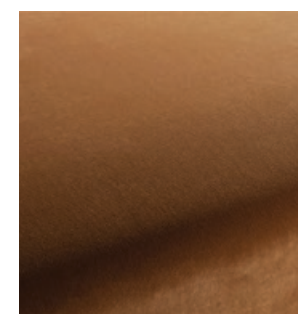
CA7832-023



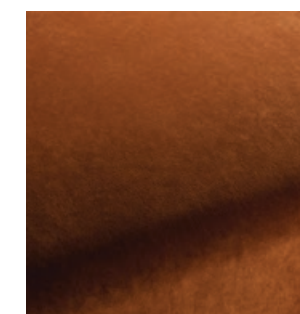
CA7832-024



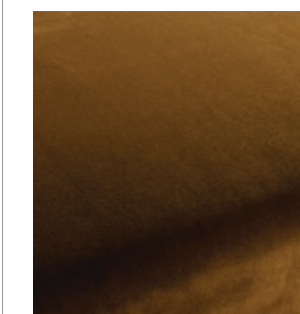
CA7832-025



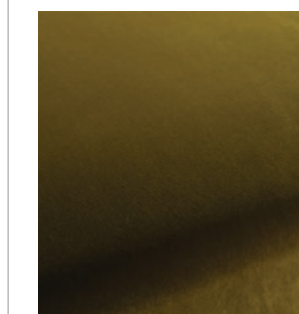
CA7832-026



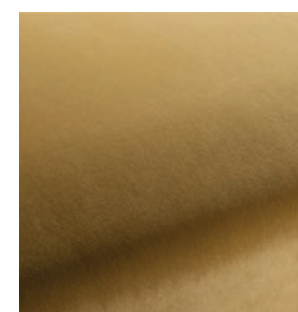
CA7832-027



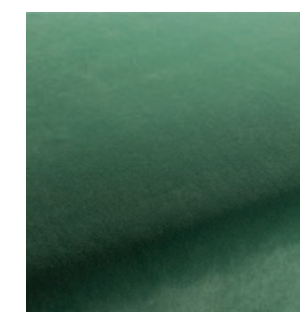
CA7832-030



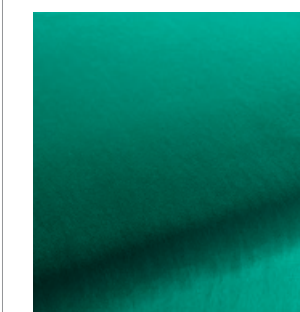
CA7832-031



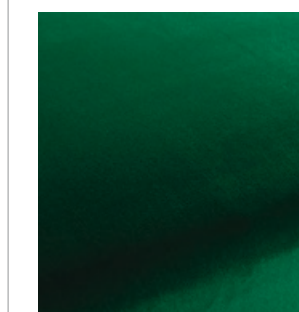
CA7832-032



CA7832-033



CA7832-034



CA7832-035



# City Velvet

Textile

Price category 1  
Manufacturer JAB  
Materials 100% Polyester  
Martindale 100.000  
Lightfastness 3-5  
Pilling 4-5



CA7832-036



CA7832-037



CA7832-038



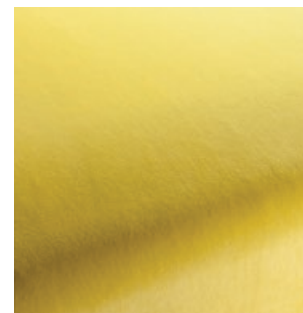
CA7832-039



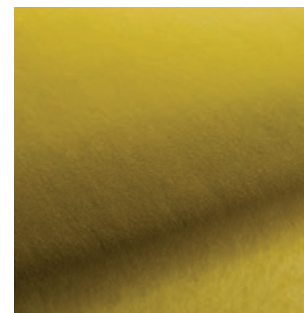
CA7832-040



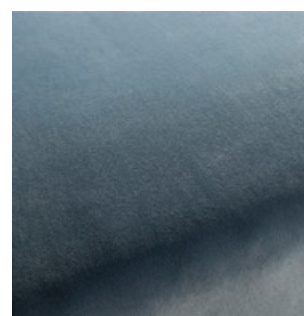
CA7832-041



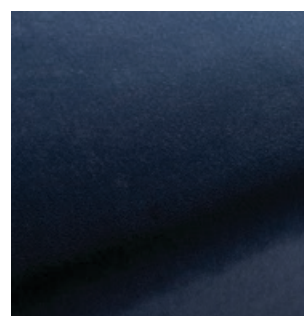
CA7832-042



CA7832-043



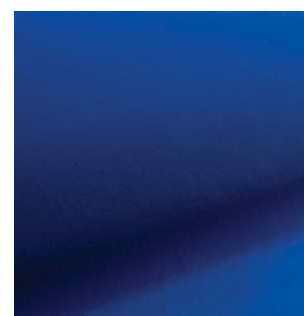
CA7832-050



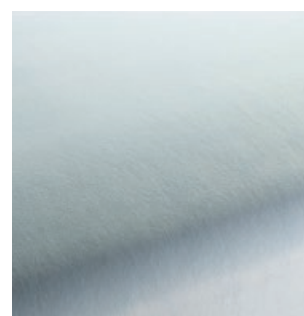
CA7832-051



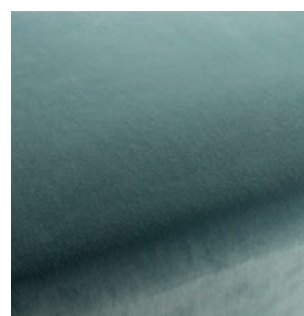
CA7832-052



CA7832-053



CA7832-055



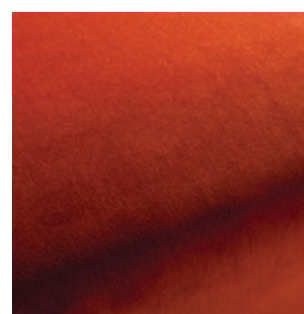
CA7832-056



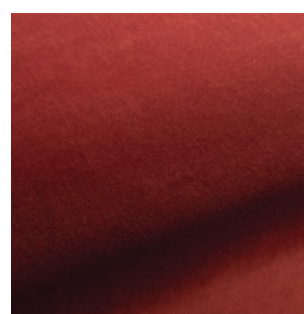
CA7832-060



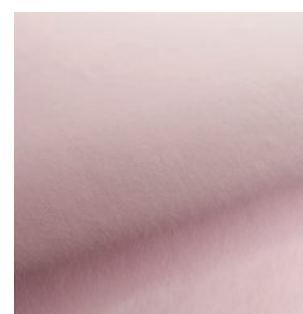
CA7832-061



CA7832-062



CA7832-063



CA7832-064

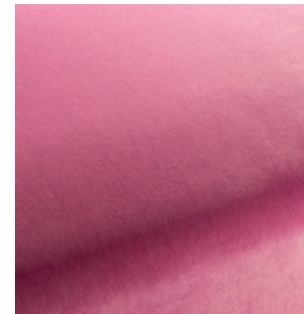


CA7832-065

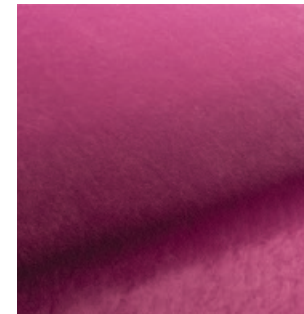
# City Velvet

Textile

Price category 1  
Manufacturer JAB  
Materials 100% Polyester  
Martindale 100.000  
Lightfastness 3-5  
Pilling 4-5



CA7832-066



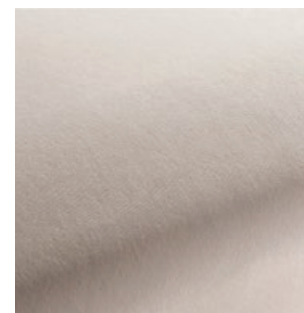
CA7832-067



CA7832-068



CA7832-069



CA7832-070



CA7832-071



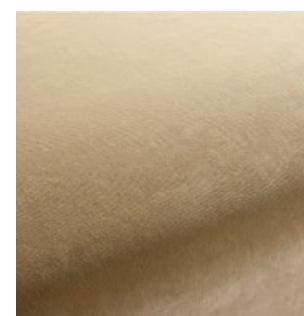
CA7832-072



CA7832-073



CA7832-074



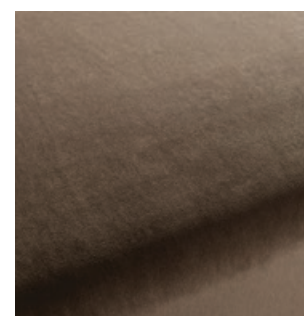
CA7832-075



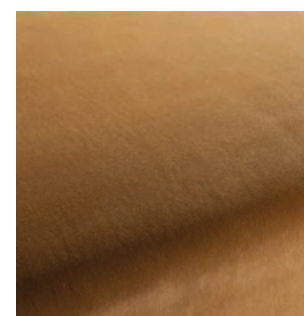
CA7832-076



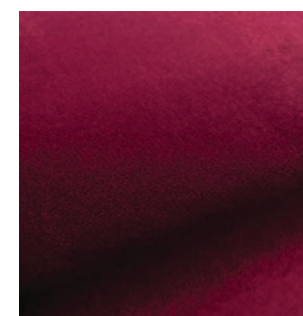
CA7832-077



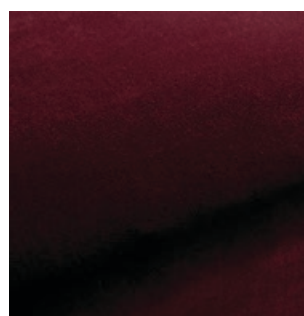
CA7832-078



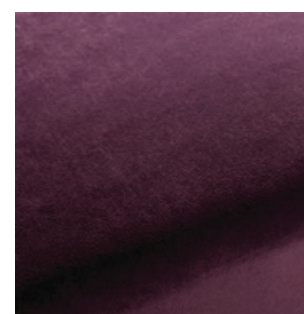
CA7832-079



CA7832-080



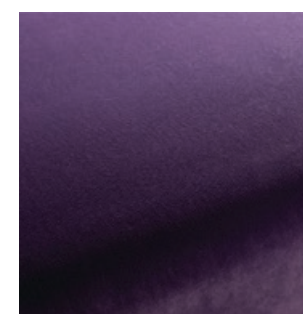
CA7832-081



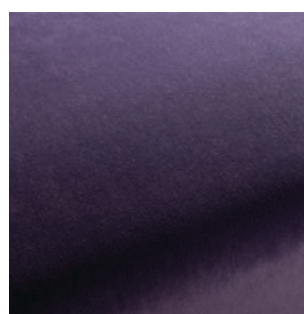
CA7832-082



CA7832-083



CA7832-084



CA7832-085



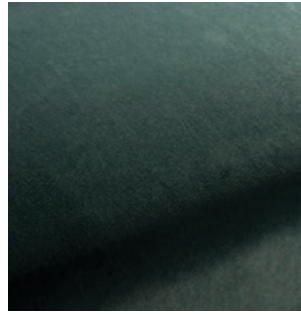
# City Velvet

Textile

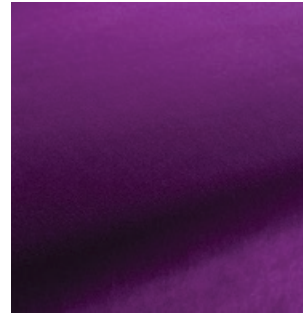
Price category 1  
Manufacturer JAB  
Materials 100% Polyester  
Martindale 100.000  
Lightfastness 3-5  
Pilling 4-5



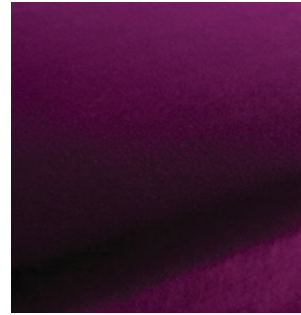
CA7832-086



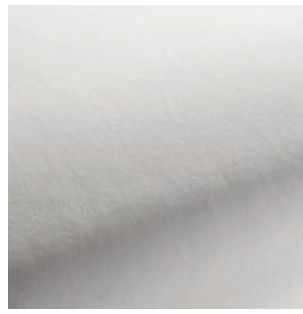
CA7832-087



CA7832-088



CA7832-089



CA7832-090



CA7832-091



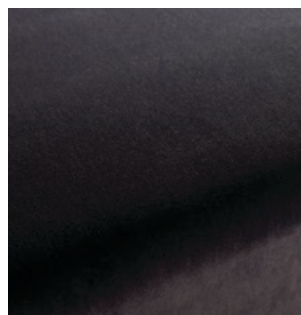
CA7832-092



CA7832-093



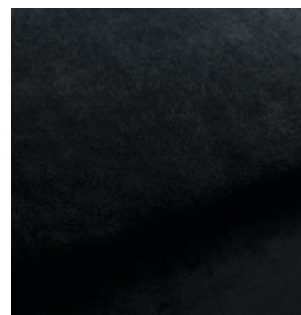
CA7832-094



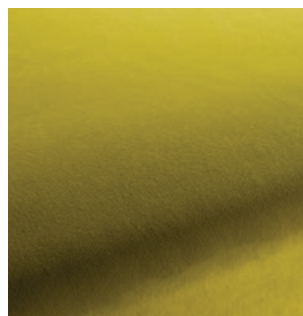
CA7832-095



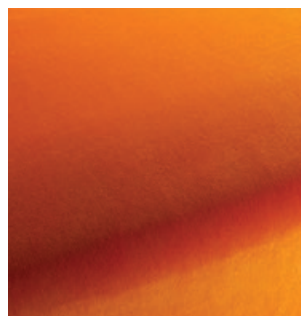
CA7832-096



CA7832-099



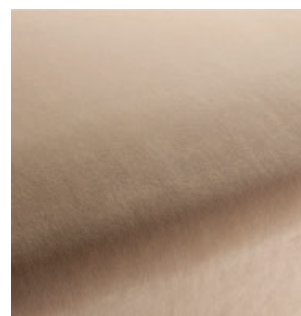
CA7832-130



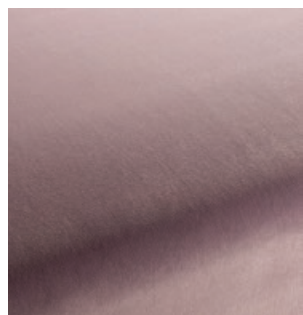
CA7832-160



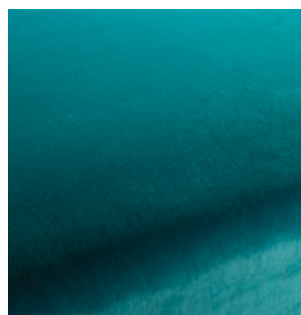
CA7832-161



CA7832-170



CA7832-180



CA7832-181



# Hot Madison Reboot

Textile

Price category 1  
Manufacturer JAB  
Materials 63% Cotton, 37% Linen  
Martindale 55.000  
Lightfastness 4-5  
Pilling 4-5



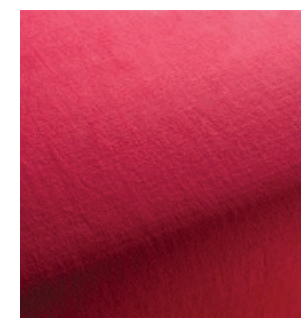
# Hot Madison Reboot

Textile

Price category 1  
Manufacturer JAB  
Materials 63% Cotton, 37% Linen  
Martindale 55.000  
Lightfastness 4-5  
Pilling 4-5



CH1249-011



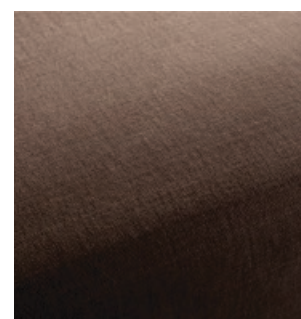
CH1249-012



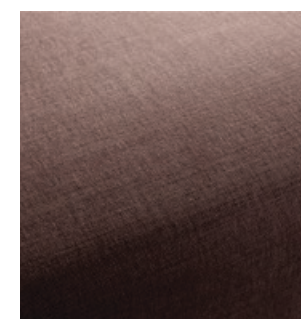
CH1249-013



CH1249-020



CH1249-021



CH1249-022



CH1249-023



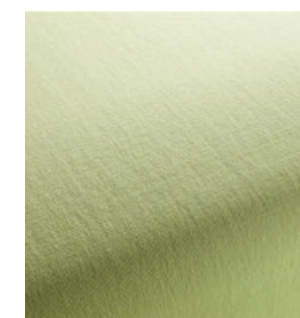
CH1249-037



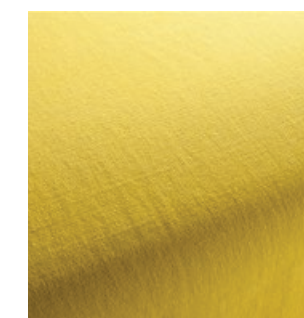
CH1249-038



CH1249-039



CH1249-043



CH1249-045



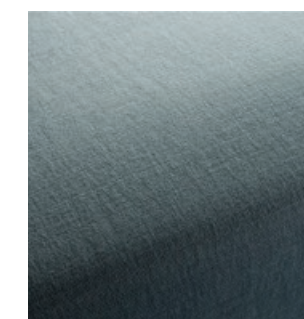
CH1249-046



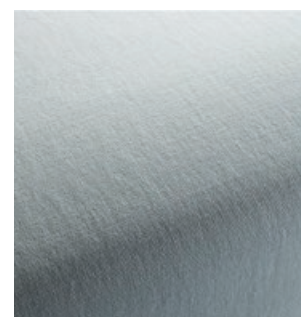
CH1249-046



CH1249-050



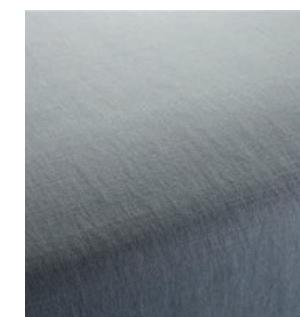
CH1249-052



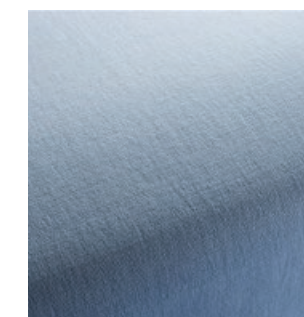
CH1249-053



CH1249-055



CH1249-056



CH1249-059



# Hot Madison Reboot

Textile

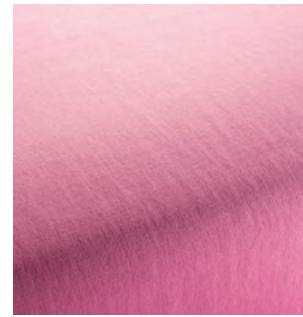
Price category 1  
Manufacturer JAB  
Materials 63% Cotton, 37% Linen  
Martindale 55.000  
Lightfastness 4-5  
Pilling 4-5



CH1249-062



CH1249-063



CH1249-064



CH1249-070



CH1249-071



CH1249-072



CH1249-073



CH1249-074



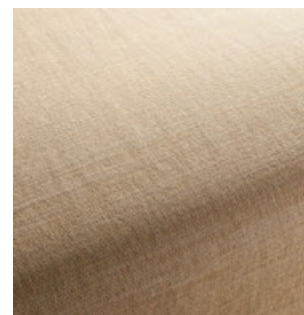
CH1249-075



CH1249-076



CH1249-077



CH1249-078



CH1249-079



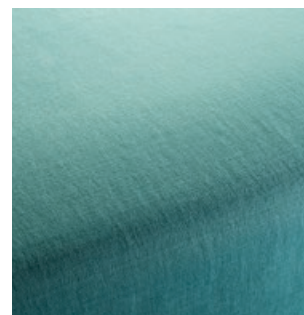
CH1249-080



CH1249-081



CH1249-082



CH1249-083



CH1249-084



CH1249-085



CH1249-086

# Hot Madison Reboot

Textile

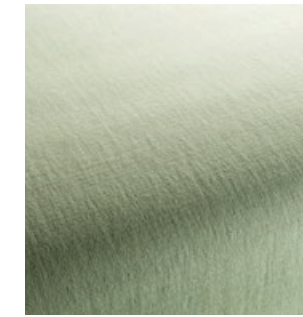
Price category 1  
Manufacturer JAB  
Materials 63% Cotton, 37% Linen  
Martindale 55.000  
Lightfastness 4-5  
Pilling 4-5



CH1249-087



CH1249-088



CH1249-089



CH1249-091



CH1249-092



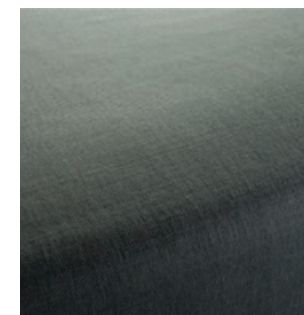
CH1249-093



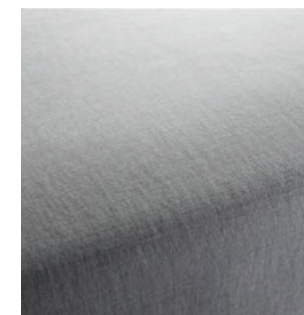
CH1249-094



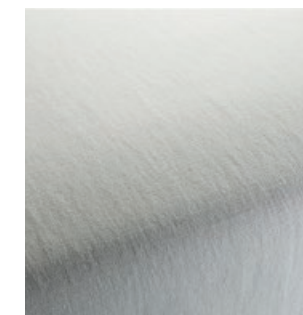
CH1249-095



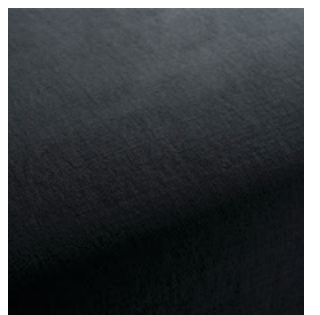
CH1249-096



CH1249-097



CH1249-098



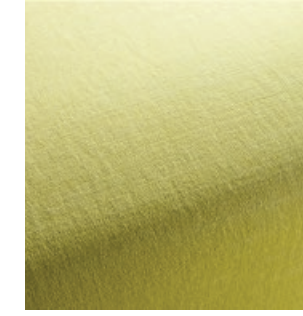
CH1249-099



CH1249-126



CH1249-127



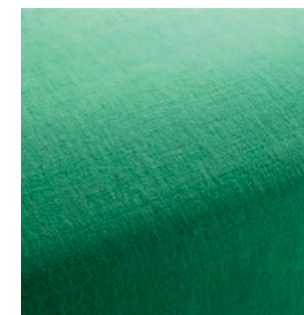
CH1249-130



CH1249-131



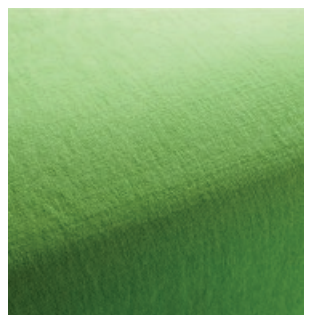
CH1249-133



CH1249-134



CH1249-135



CH1249-139



# Hot Madison Reboot

Textile

Price category 1  
Manufacturer JAB  
Materials 63% Cotton, 37% Linen  
Martindale 55.000  
Lightfastness 4-5  
Pilling 4-5



CH1249-155



CH1249-170



CH1249-171



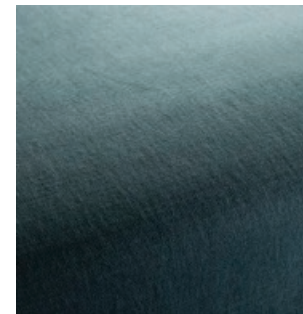
CH1249-172



CH1249-180



CH1249-181



CH1249-182



CH1249-183



CH1249-184



CH1249-185



CH1249-186



CH1249-191



CH1249-192



CH1249-193



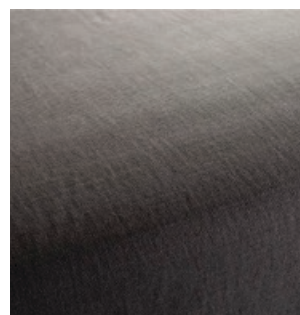
CH1249-194



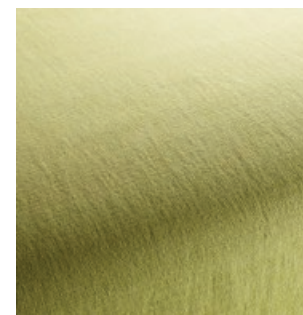
CH1249-195



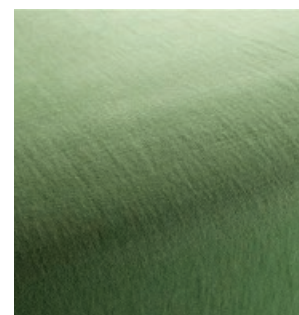
CH1249-196



CH1249-197



CH1249-230

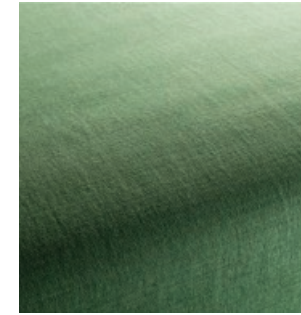


CH1249-231

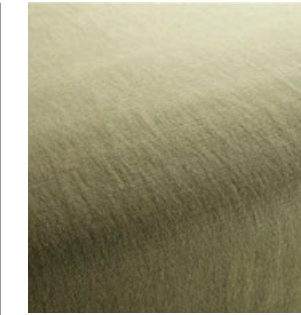
# Hot Madison Reboot

Textile

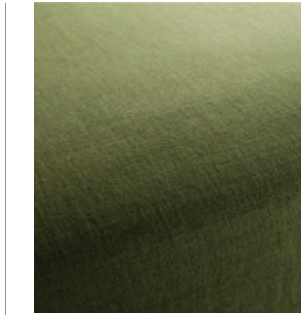
Price category 1  
Manufacturer JAB  
Materials 63% Cotton, 37% Linen  
Martindale 55.000  
Lightfastness 4-5  
Pilling 4-5



CH1249-232



CH1249-233



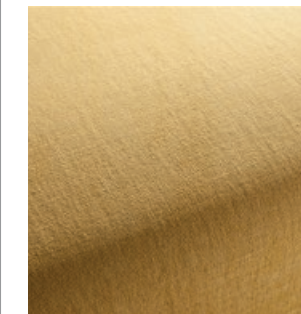
CH1249-234



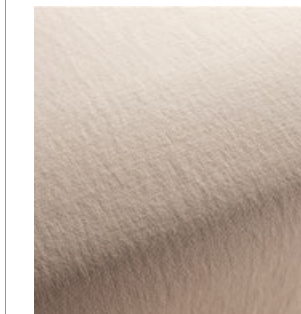
CH1249-245



CH1249-248



CH1249-404



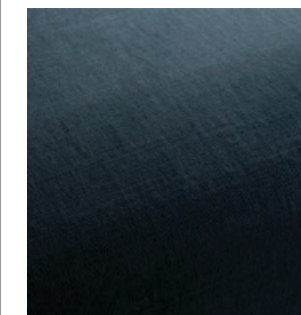
CH1249-410



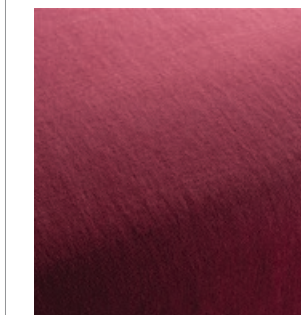
CH1249-419



CH1249-420



CH1249-424



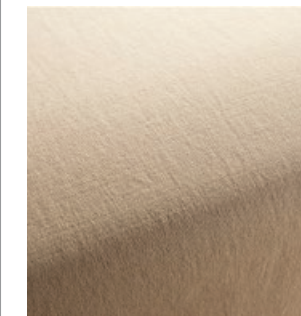
CH1249-459



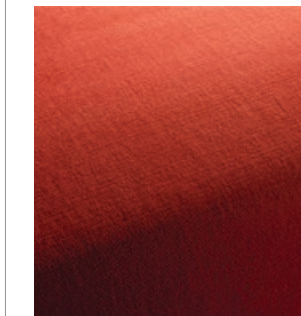
CH1249-469



CH1249-471



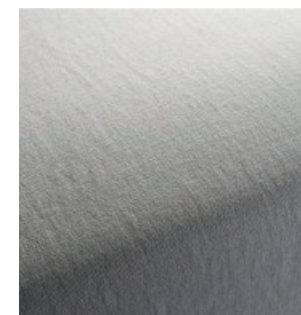
CH1249-476



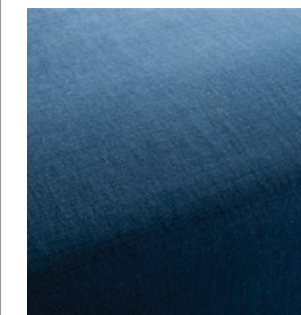
CH1249-490



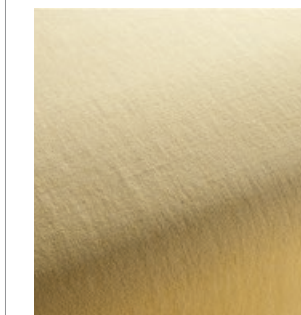
CH1249-495



CH1249-497



CH1249-499



CH1249-509



CH1249-517



# Hot Madison Reboot

Textile

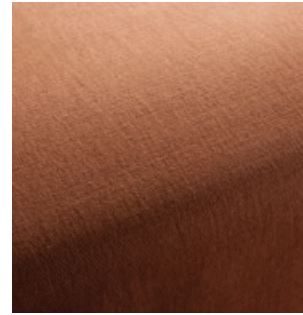
Price category 1  
Manufacturer JAB  
Materials 63% Cotton, 37% Linen  
Martindale 55.000  
Lightfastness 4-5  
Pilling 4-5



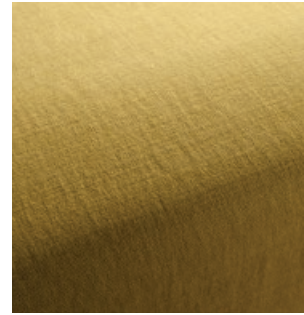
CH1249-521



CH1249-524



CH1249-525



CH1249-528



CH1249-694-



CH1249-695



CH1249-696



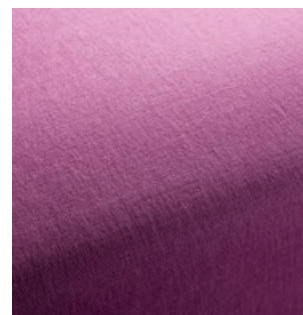
CH1249-697



CH1249-698



CH1249-699



CH1249-700



CH1249-701



CH1249-702



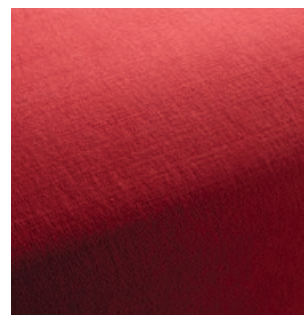
CH1249-703



CH1249-704



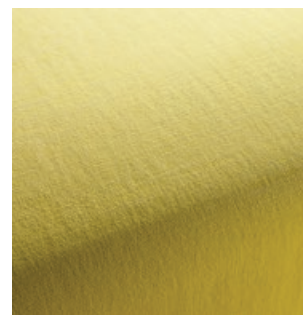
CH1249-705



CH1249-706



CH1249-707



CH1249-708

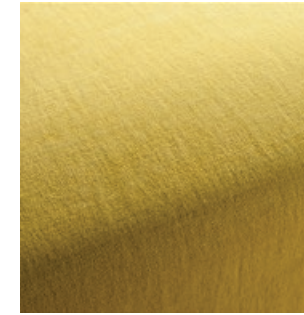


CH1249-709

# Hot Madison Reboot

Textile

Price category 1  
Manufacturer JAB  
Materials 63% Cotton, 37% Linen  
Martindale 55.000  
Lightfastness 4-5  
Pilling 4-5



CH1249-710



CH1249-711



CH1249-712



CH1249-713



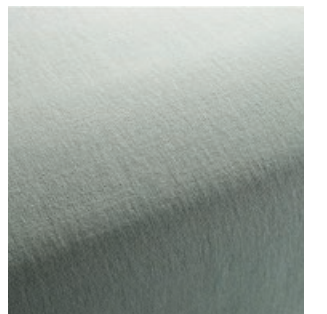
CH1249-714



CH1249-715



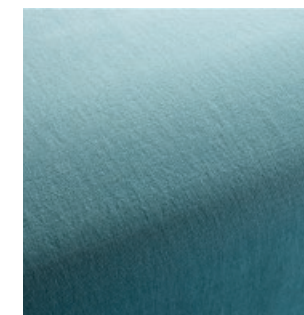
CH1249-716



CH1249-717



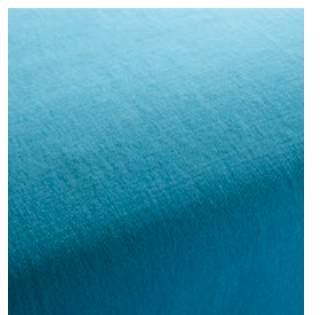
CH1249-718



CH1249-719



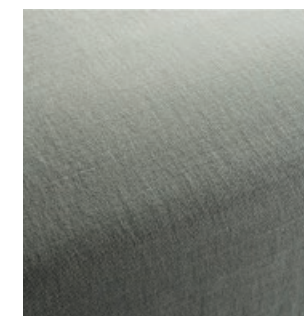
CH1249-720



CH1249-721



CH1249-722



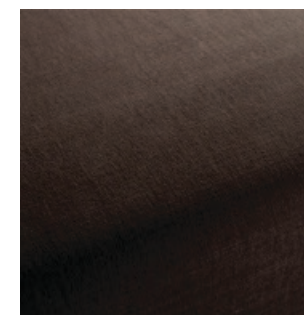
CH1249-723



CH1249-724



CH1249-725



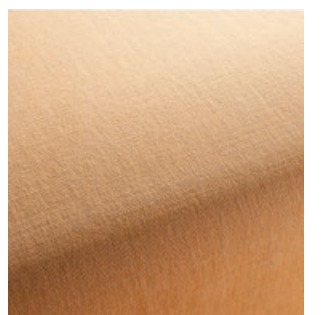
CH1249-884



CH1249-893



CH1249-894



CH1249-896



# Hot Madison Reboot

Textile

Price category 1  
Manufacturer JAB  
Materials 63% Cotton, 37% Linen  
Martindale 55.000  
Lightfastness 4-5  
Pilling 4-5



CH1249-897



CH1249-898



CH1249-934



CH1249-987



CH1249-988



CH1249-989



CH1249-990



CH1249-991



CH1249-992



CH1249-993



CH1249-994



# Maple

Textile

Price category 1  
Manufacturer Kvadrat  
Materials 81% Viscose, 15% Linen,  
4% Non-woven Polyester backing  
Martindale 30.000  
Lightfastness 5-7  
Pilling 5



# Maple

Textile

Price category 1  
Manufacturer Kvadrat  
Materials 81% Viscose, 15% Linen,  
4% Non-woven Polyester backing  
Martindale 30.000  
Lightfastness 5-7  
Pilling 5





# Maple

Textile

Price category 1  
Manufacturer Kvadrat  
Materials 81% Viscose, 15% Linen,  
4% Non-woven Polyester backing  
Martindale 30.000  
Lightfastness 5-7  
Pilling 5



0732



0742



0762



0792



0832



0862



# Remix 3

Textile

Price category 1  
Manufacturer Kvadrat  
Materials 90% New wool, 10% Nylon  
Martindale 100.000  
Lightfastness 5-7  
Pilling 4



# Remix 3

Textile

Price category 1  
Manufacturer Kvadrat  
Materials 90% New wool, 10% Nylon  
Martindale 100.000  
Lightfastness 5-7  
Pilling 4

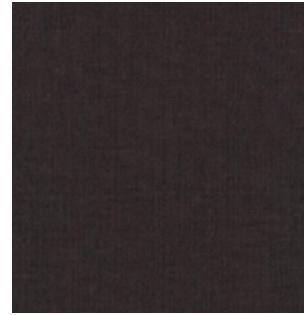




# Remix 3

Textile

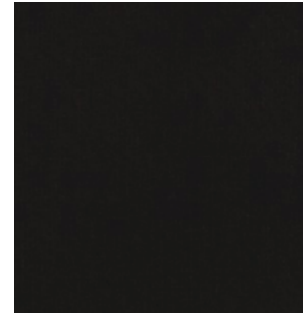
Price category 1  
Manufacturer Kvadrat  
Materials 90% New wool, 10% Nylon  
Martindale 100.000  
Lightfastness 5-7  
Pilling 4



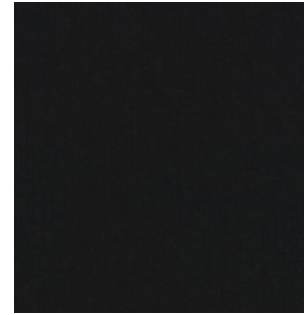
0356



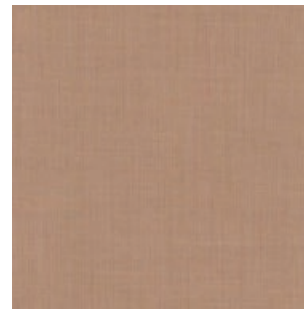
0362



0373



0383



0406



0412



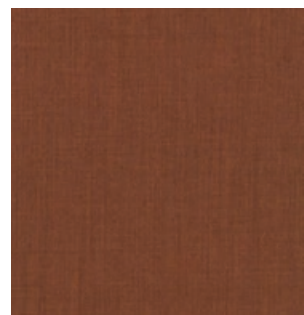
0422



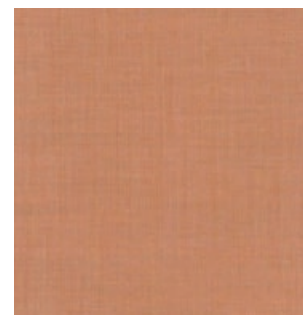
0433



0443



0452



0516



0536



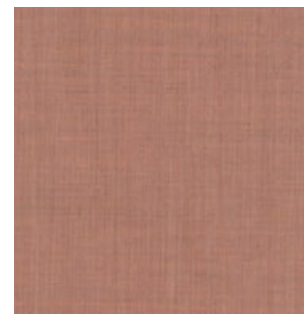
0543



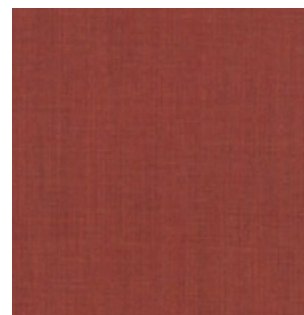
0566



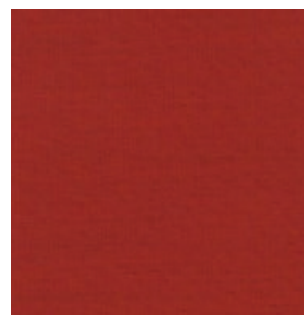
0606



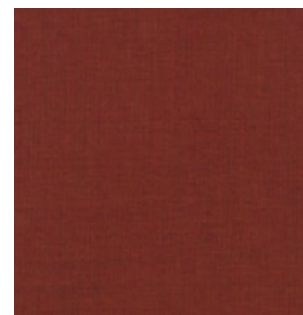
0612



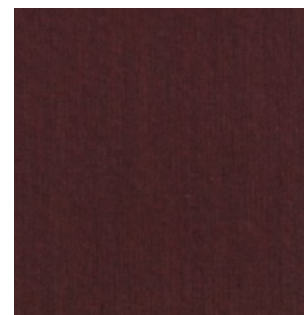
0632



0643



0653

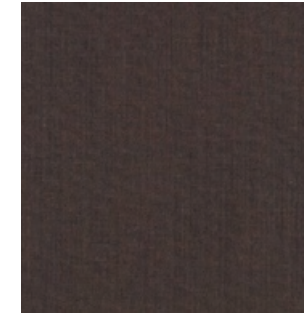


0662

# Remix 3

Textile

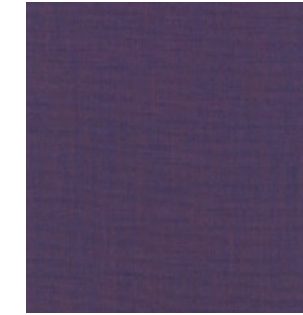
Price category 1  
Manufacturer Kvadrat  
Materials 90% New wool, 10% Nylon  
Martindale 100.000  
Lightfastness 5-7  
Pilling 4



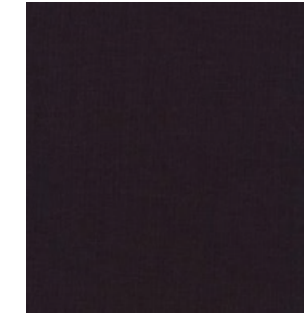
0672



0682



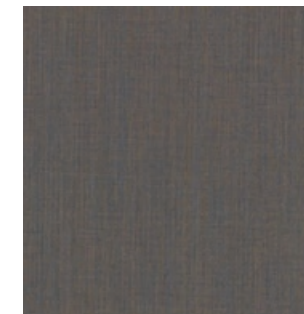
0686



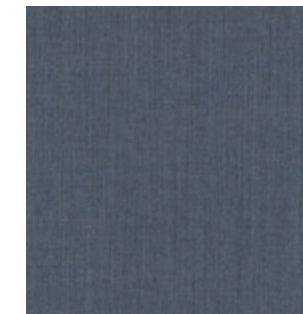
0692



0716



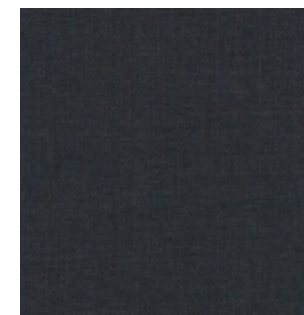
0722



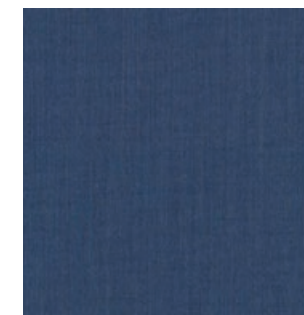
0733



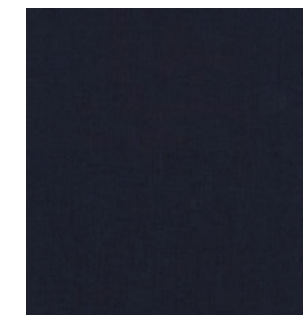
0743



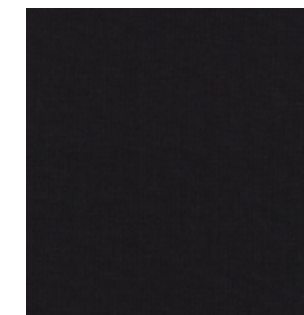
0753



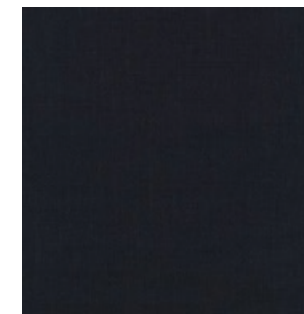
0762



0773



0783



0796



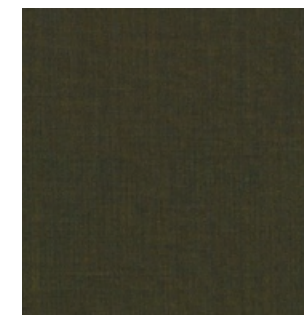
0816



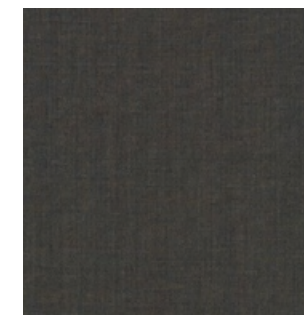
0823



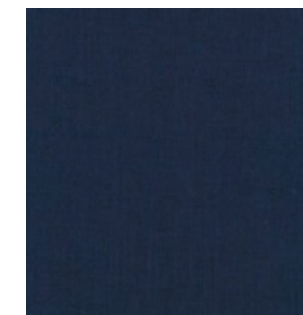
0836



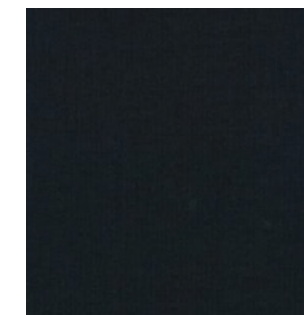
0842



0852



0866



0873



# Remix 3

Textile

Price category 1  
Manufacturer Kvadrat  
Materials 90% New wool, 10% Nylon  
Martindale 100.000  
Lightfastness 5-7  
Pilling 4



0906



0912



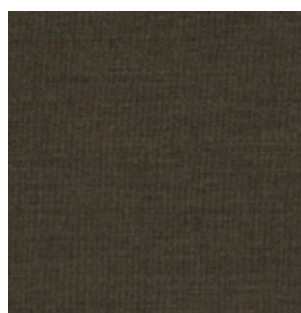
0923



0933



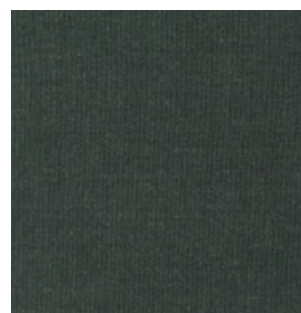
0942



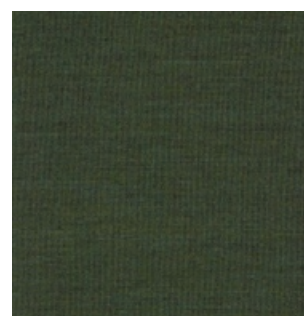
0954



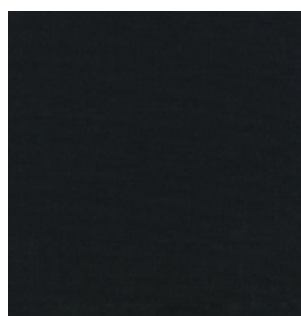
0962



0973



0982



0996



# Re-Wool

Textile

Price category 1  
Manufacturer Kvadrat  
Materials 45% new wool worsted 45% recycled wool 10% nylon  
Martindale 100.000  
Lightfastness 5-7 (ISO 1-8)  
Pilling 4 (ISO 1-5)



# Re-Wool

Textile

Price category 1  
Manufacturer Kvadrat  
Materials 45% new wool worsted 45% recycled wool 10% nylon  
Martindale 100.000  
Lightfastness 5-7 (ISO 1-8)  
Pilling 4 (ISO 1-5)





# Re-Wool

Textile



0868

**Price category 1**  
**Manufacturer** Kvadrat  
**Materials** 45% new wool worsted 45% recycled  
wool 10% nylon  
**Martindale** 100.000  
**Lighfastness** 5-7 (ISO 1-8)  
**Pilling** 4 (ISO 1-5)



# Illusion

Artificial leather

Price category 1  
Manufacturer Nevotex  
Materials Artificial leather  
Thickness 1 mm



\*Please note Instill is an artificial leather

# Illusion

Artificial leather

Price category 1  
Manufacturer Nevotex  
Materials Artificial leather  
Thickness 1 mm

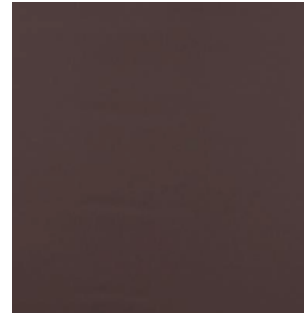




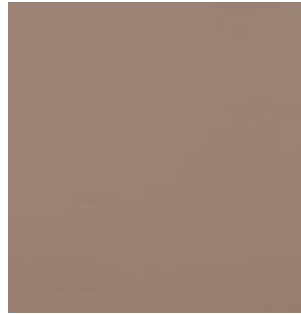
# Illusion

Artificial leather

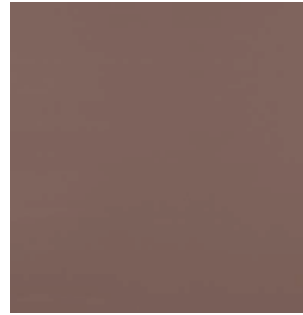
Price category 1  
Manufacturer Nevotex  
Materials Artificial leather  
Thickness 1 mm



48013



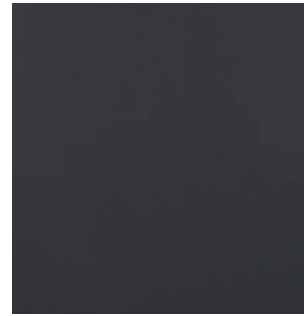
46508



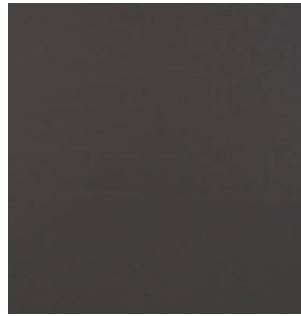
47124



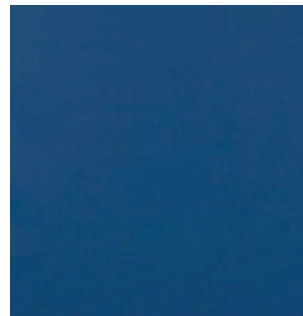
67403



68523



58290



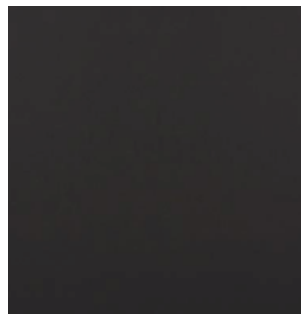
68746



65066



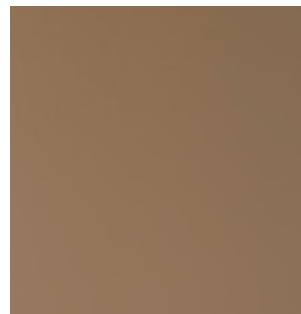
67382



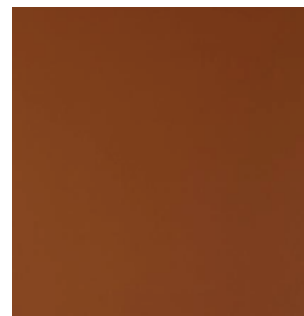
00110



83430



85020



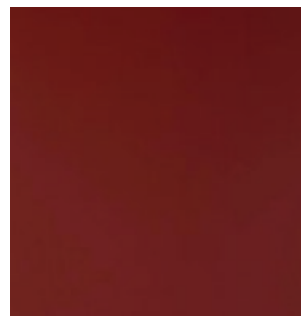
44388



36850



23660



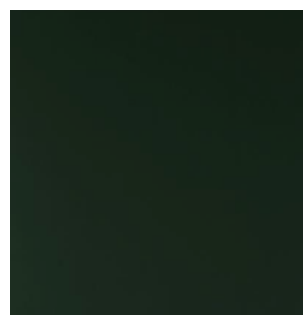
28040



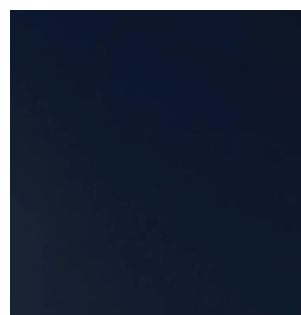
75566



76725



77773

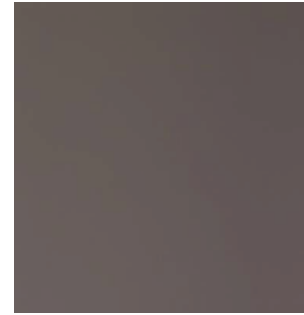


66745

# Illusion

Artificial leather

Price category 1  
Manufacturer Nevotex  
Materials Artificial leather  
Thickness 1 mm



47069



2

*Textile Category 2*



# Canvas 2

Textile

Price category 2  
Manufacturer Kvadrat  
Materials 90% New wool, 10% Nylon  
Martindale 100.000  
Lightfastness 5-7  
Pilling 4-5



# Canvas 2

Textile

Price category 2  
Manufacturer Kvadrat  
Materials 90% New wool, 10% Nylon  
Martindale 100.000  
Lightfastness 5-7  
Pilling 4-5



114



124



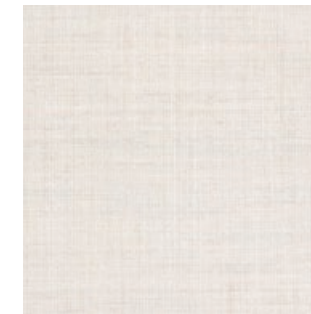
134



154



174



216



224



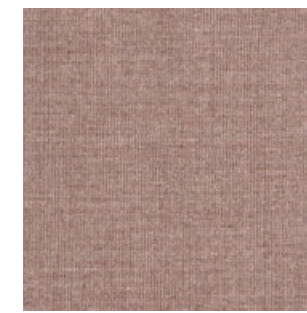
244



254



264



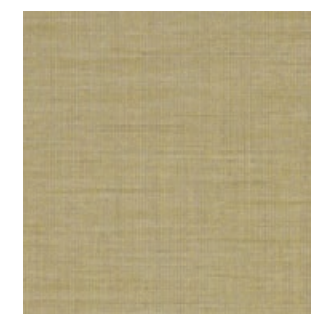
356



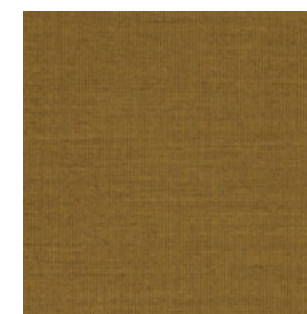
364



374



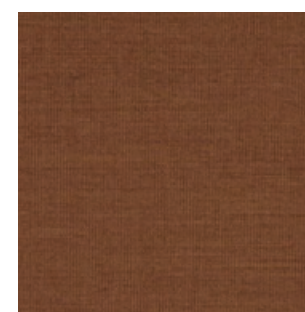
414



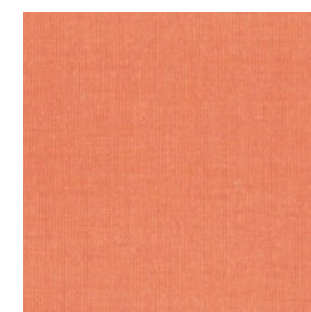
424



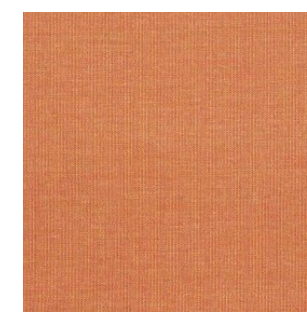
446



454



546



556



566



# Canvas 2

Textile

Price category 2  
Manufacturer Kvadrat  
Materials 90% New wool, 10% Nylon  
Martindale 100.000  
Lightfastness 5-7  
Pilling 4-5



576



614



644



654



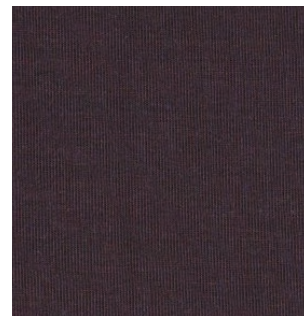
666



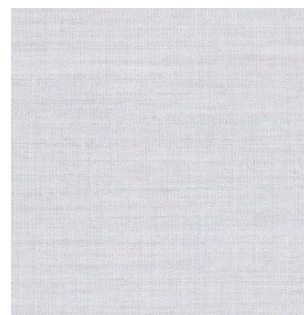
674



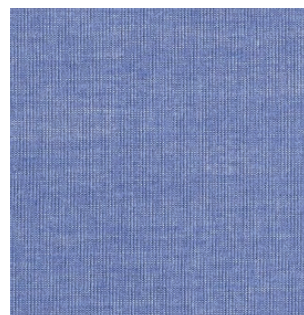
684



694



716



726



734



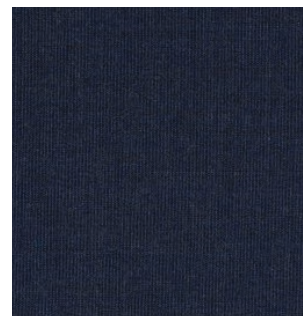
746



764



786



794



836



854



926



936



946

# Canvas 2

Textile

Price category 2  
Manufacturer Kvadrat  
Materials 90% New wool, 10% Nylon  
Martindale 100.000  
Lightfastness 5-7  
Pilling 4-5



954



964



974



984



996



# Clay

Textile

Price category 2  
Manufacturer Sahco  
Materials 76% Linen, 21% Cotton,  
3% Polyester  
Martindale 45.000  
Lightfastness 4-6  
Pilling 4



# Clay

Textile

Price category 2  
Manufacturer Sahco  
Materials 76% Linen, 21% Cotton,  
3% Polyester  
Martindale 45.000  
Lightfastness 4-6  
Pilling 4





# Colline 2

Textile

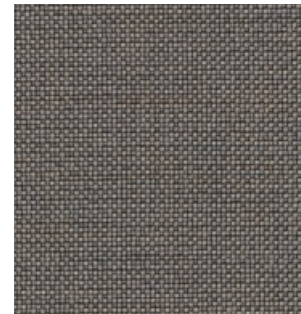
Price category 2  
Manufacturer Kvadrat  
Materials 75% wool, 17% Acrylic,  
8% Nylon  
Martindale 100.000  
Lightfastness 6  
Pilling 4-5



# Colline 2

Textile

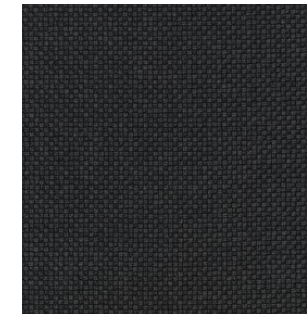
Price category 2  
Manufacturer Kvadrat  
Materials 75% wool, 17% Acrylic,  
8% Nylon  
Martindale 100.000  
Lightfastness 6  
Pilling 4-5



0127



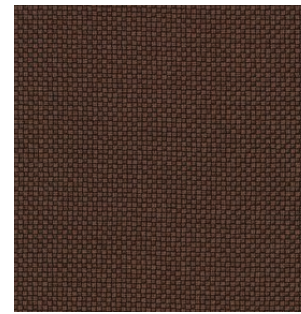
0147



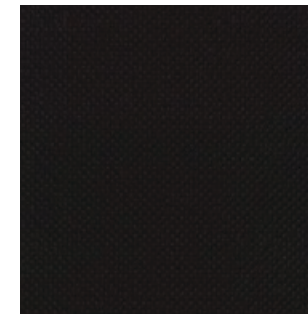
0177



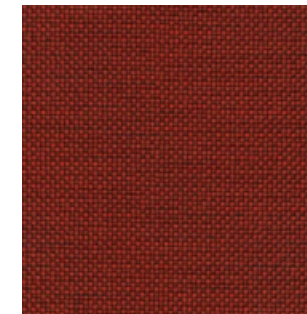
0227



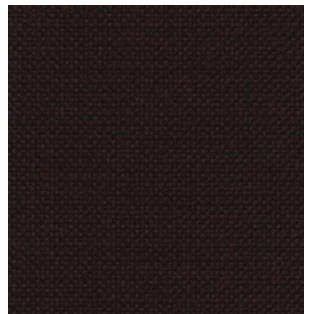
0347



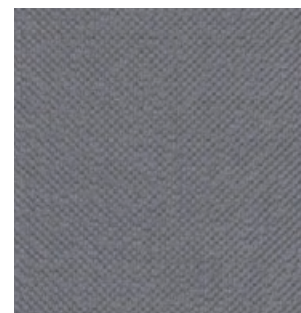
0397



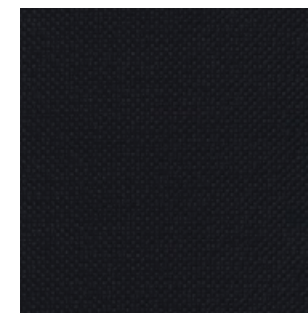
0657



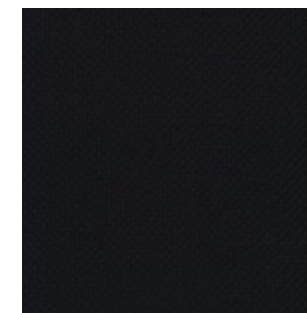
0677



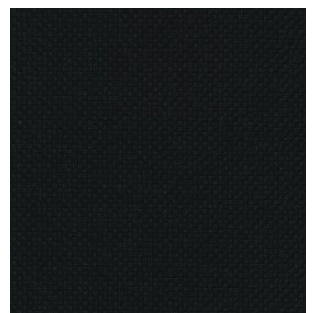
0737



0787



0797



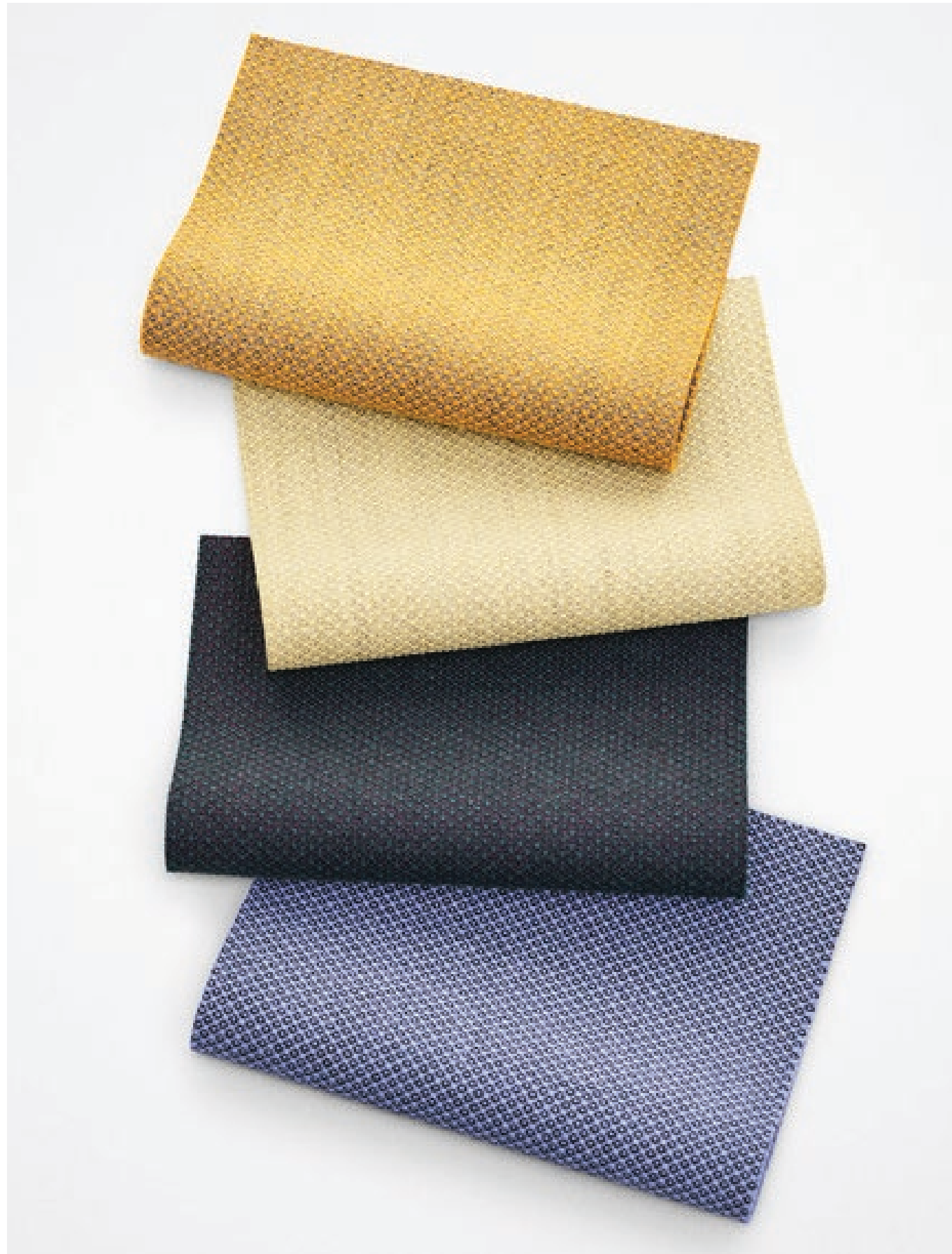
0987



# Fiord 2

Textile

Price category 2  
Manufacturer Kvadrat  
Materials 92% New wool, 8% Nylon  
Martindale 60.000  
Lightfastness 6  
Pilling 4-5



# Fiord 2

Textile

Price category 2  
Manufacturer Kvadrat  
Materials 92% New wool, 8% Nylon  
Martindale 60.000  
Lightfastness 6  
Pilling 4-5





# Fiord 2

Textile

Price category 2  
Manufacturer Kvadrat  
Materials 92% New wool, 8% Nylon  
Martindale 60.000  
Lightfastness 6  
Pilling 4-5



571



581



591



642



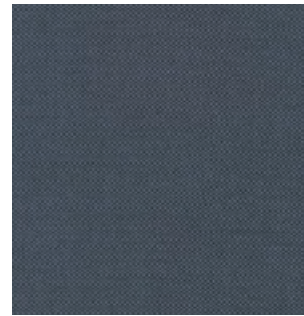
672



721



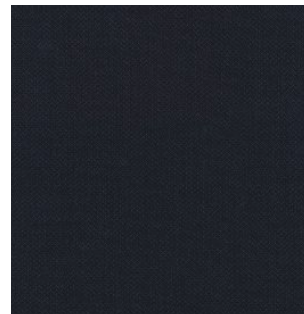
751



762



771



782



791



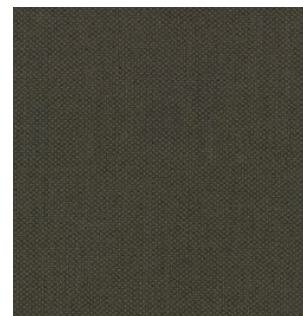
821



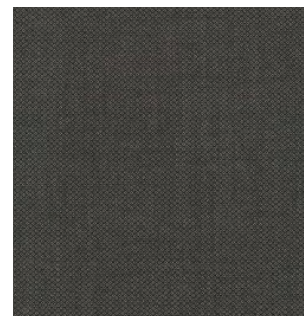
862



951



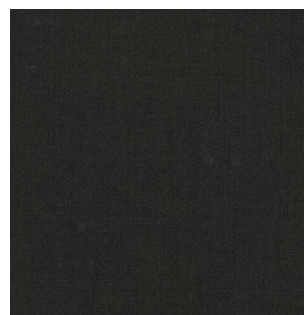
961



971



981



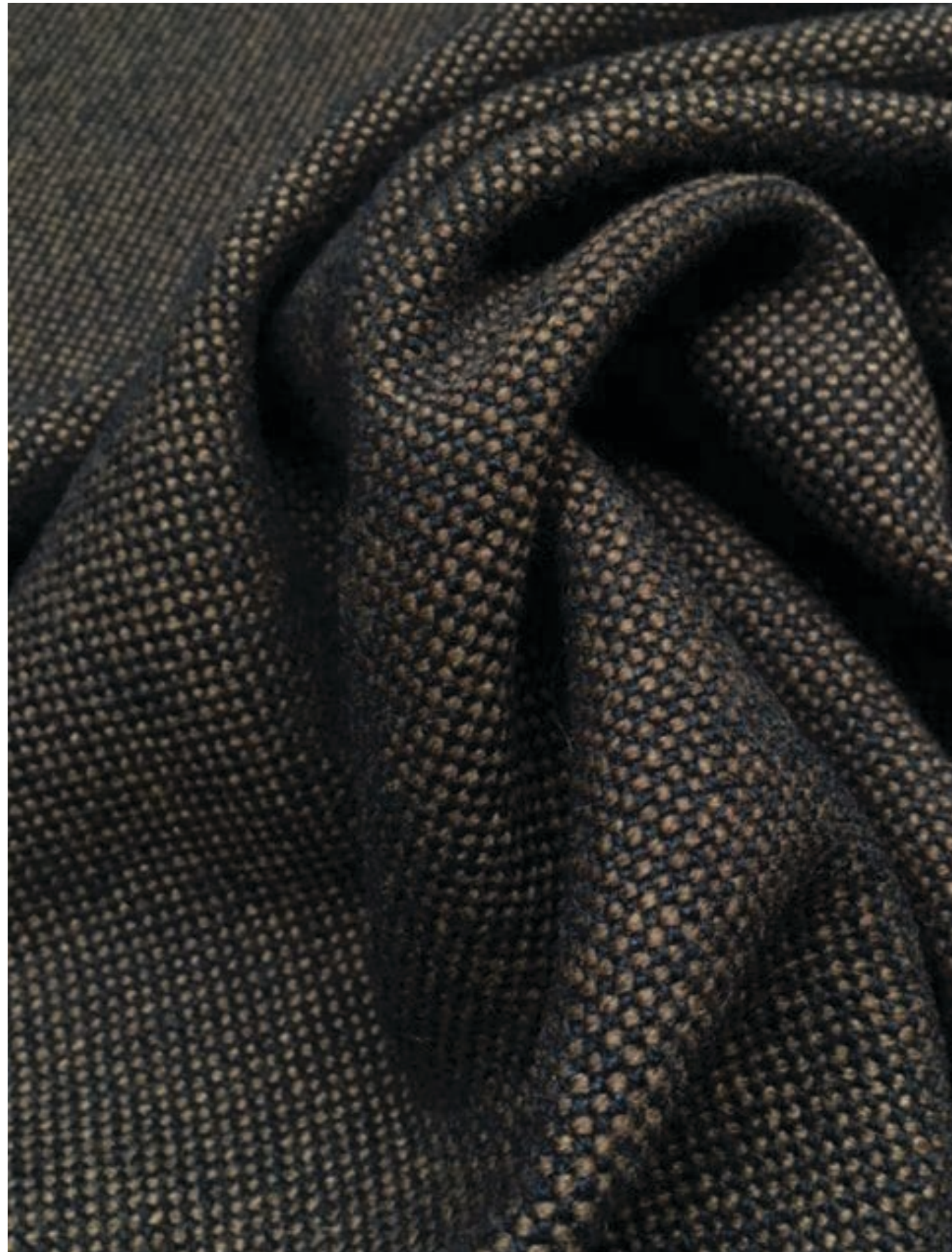
991



# Hallingdal 65

Textile

Price category 2  
Manufacturer Kvadrat  
Materials 70% New wool, 30% Viscose  
Martindale 100.000  
Lightfastness 5-7  
Pilling 3-4



# Hallingdal 65

Textile

Price category 2  
Manufacturer Kvadrat  
Materials 70% New wool, 30% Viscose  
Martindale 100.000  
Lightfastness 5-7  
Pilling 3-4





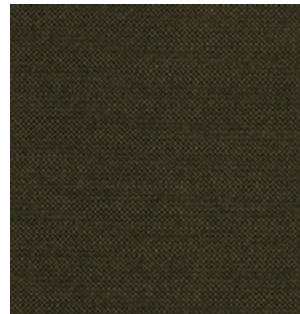
# Hallingdal 65

Textile

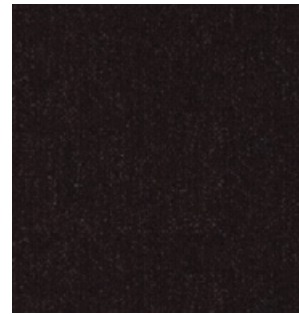
Price category 2  
Manufacturer Kvadrat  
Materials 70% New wool, 30% Viscose  
Martindale 100.000  
Lightfastness 5-7  
Pilling 3-4



0368



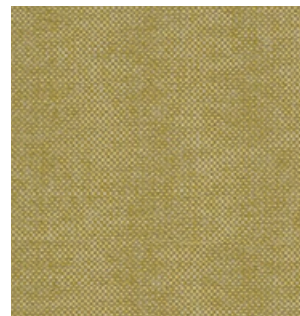
0370



0376



0390



0407



0420



0457



0526



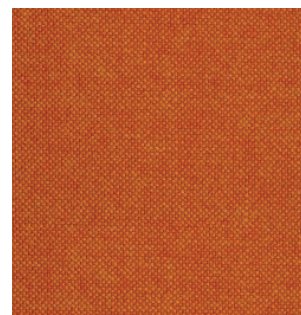
0547



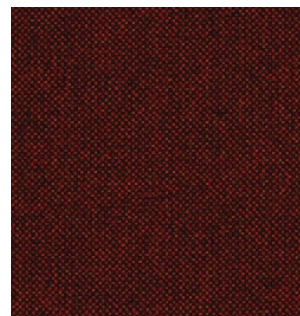
0563



0573



0590



0596



0600



0657



0660



0674



0680



0687



0694

# Hallingdal 65

Textile

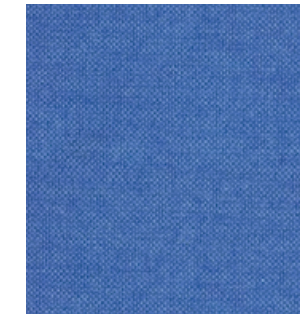
Price category 2  
Manufacturer Kvadrat  
Materials 70% New wool, 30% Viscose  
Martindale 100.000  
Lightfastness 5-7  
Pilling 3-4



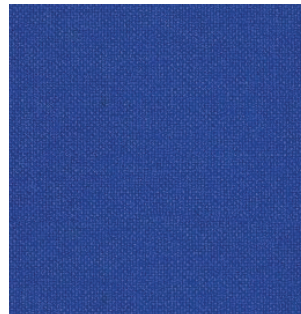
0702



0723



0733



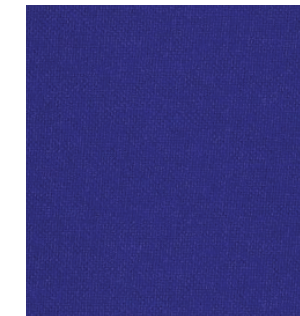
0750



0753



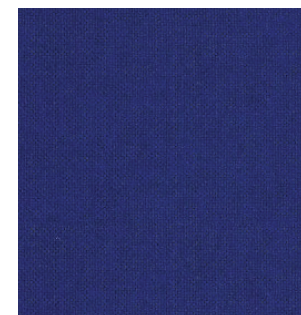
0754



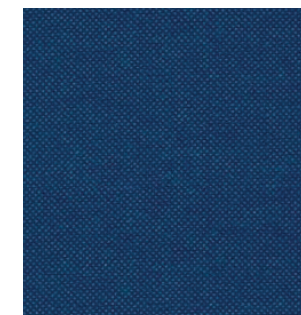
0763



0764



0773



0810



0840



0850



0890



0907



0944



0960



0968



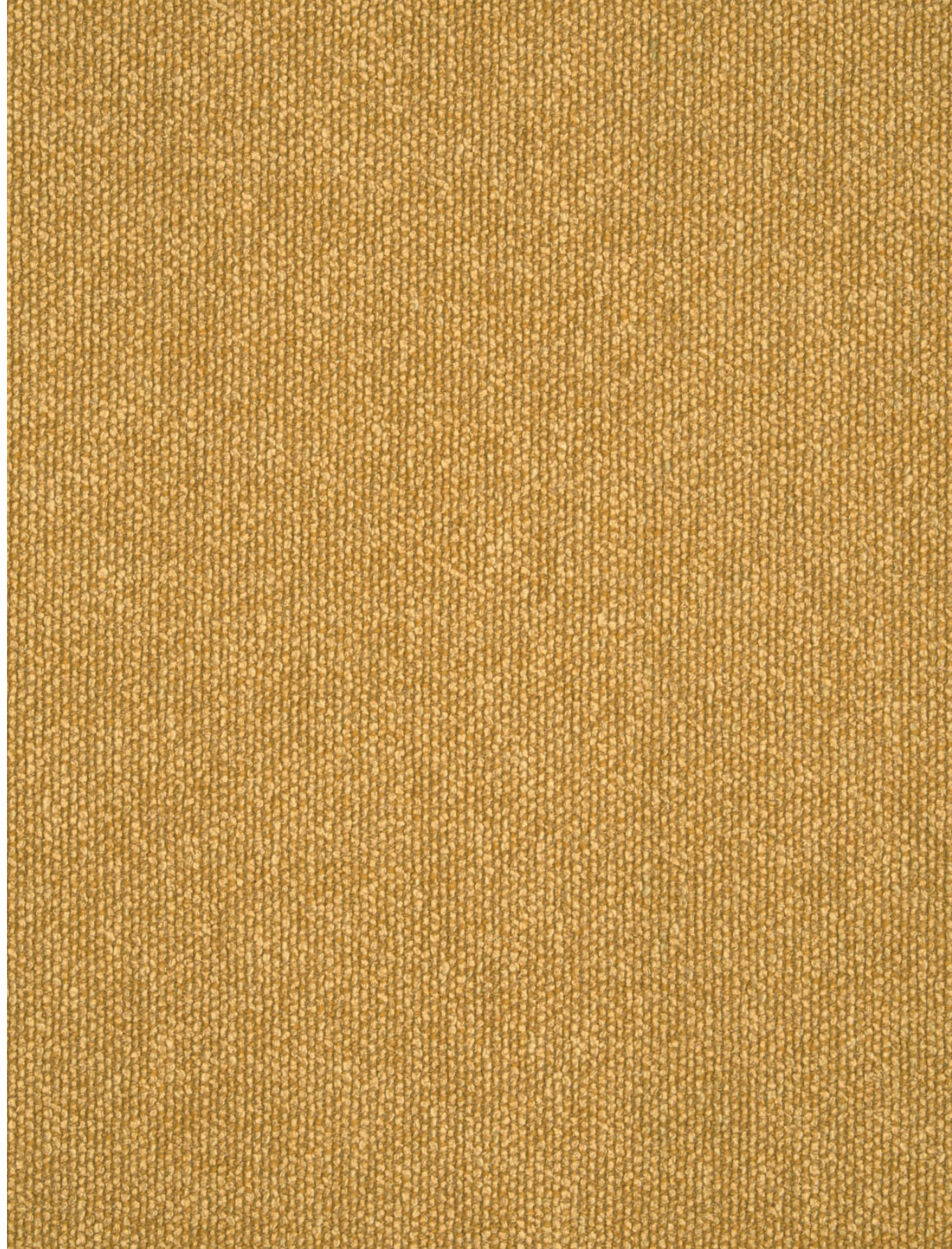
0980



# Moss

Textile

Price category 2  
Manufacturer Sahco  
Materials 52% Cotton, 22% Viscose,  
14% Acrylic, 6% Linen, 3% Polyester,  
3% Nylon  
Martindale 45.000  
Lightfastness 6-7  
Pilling 4-5



# Moss

Textile

Price category 2  
Manufacturer Sahco  
Materials 52% Cotton, 22% Viscose,  
14% Acrylic, 6% Linen, 3% Polyester,  
3% Nylon  
Martindale 45.000  
Lightfastness 6-7  
Pilling 4-5





# Moss

Textile



0021



0022

**Price category 2**  
**Manufacturer** Sahco  
**Materials** 52% Cotton, 22% Viscose,  
14% Acrylic, 6% Linen, 3% Polyester,  
3% Nylon  
**Martindale** 45.000  
**Lightfastness** 6-7  
**Pilling** 4-5



# Reflect

Textile

Price category 2  
Manufacturer Kvadrat  
Materials 100% post-consumer recycled polyester  
Martindale 100.000  
Lightfastness 6 (ISO 1-8)  
Pilling 4 (ISO 1-5)



# Reflect

Textile

Price category 2  
Manufacturer Kvadrat  
Materials 100% post-consumer recycled polyester  
Martindale 100.000  
Lightfastness 6 (ISO 1-8)  
Pilling 4 (ISO 1-5)

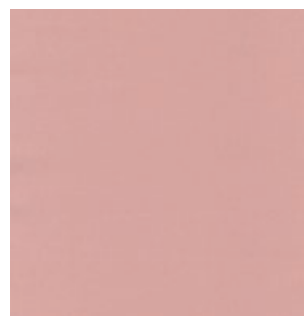




# Reflect

Textile

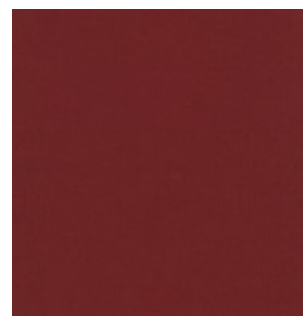
Price category 2  
Manufacturer Kvadrat  
Materials 100% post-consumer recycled polyester  
Martindale 100.000  
Lightfastness 6 (ISO 1-8)  
Pilling 4 (ISO 1-5)



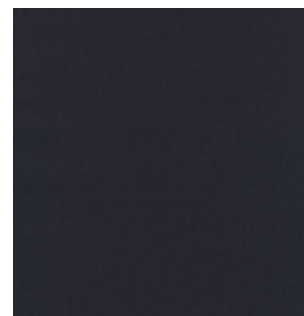
0614



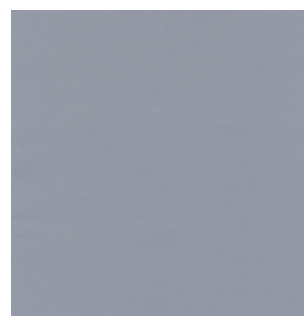
0644



0674



0694



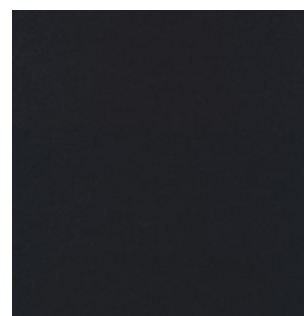
0714



0744



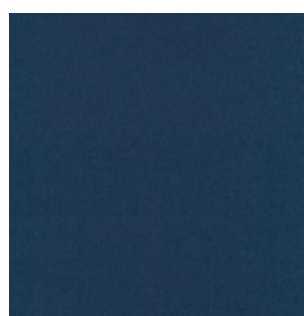
0774



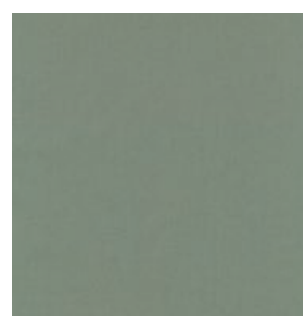
0794



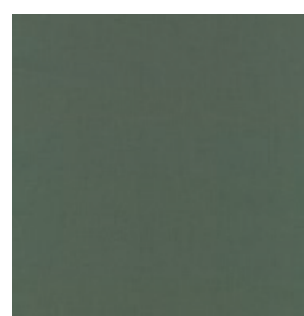
0824



0884



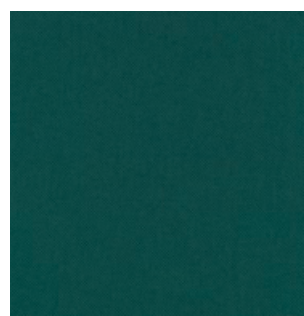
0924



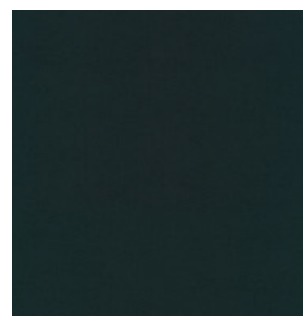
0944



0964



0984



0994



# Savanna

Textile

Price category 2  
Manufacturer Kvadrat  
Materials 34% Polyester, 31% wool,  
26% Acrylic, 4% Cotton, 3% Nylon,  
2% Linen  
Martindale 45.000  
Lightfastness 6-7  
Pilling 3



# Savanna

Textile

Price category 2  
Manufacturer Kvadrat  
Materials 34% Polyester, 31% wool,  
26% Acrylic, 4% Cotton, 3% Nylon,  
2% Linen  
Martindale 45.000  
Lightfastness 6-7  
Pilling 3



242



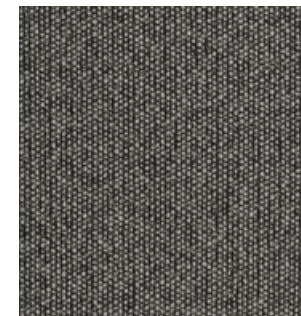
262



622



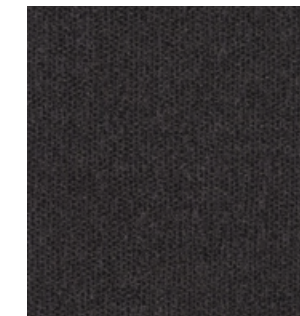
122



152



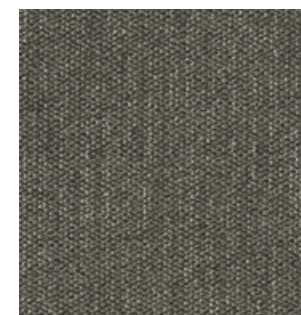
222



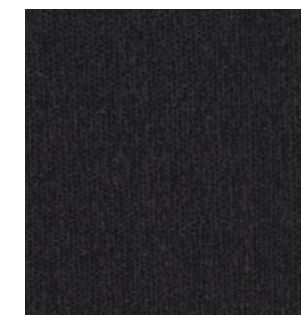
292



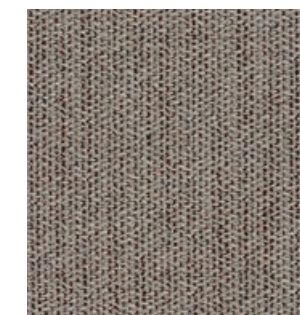
202



952



192



622



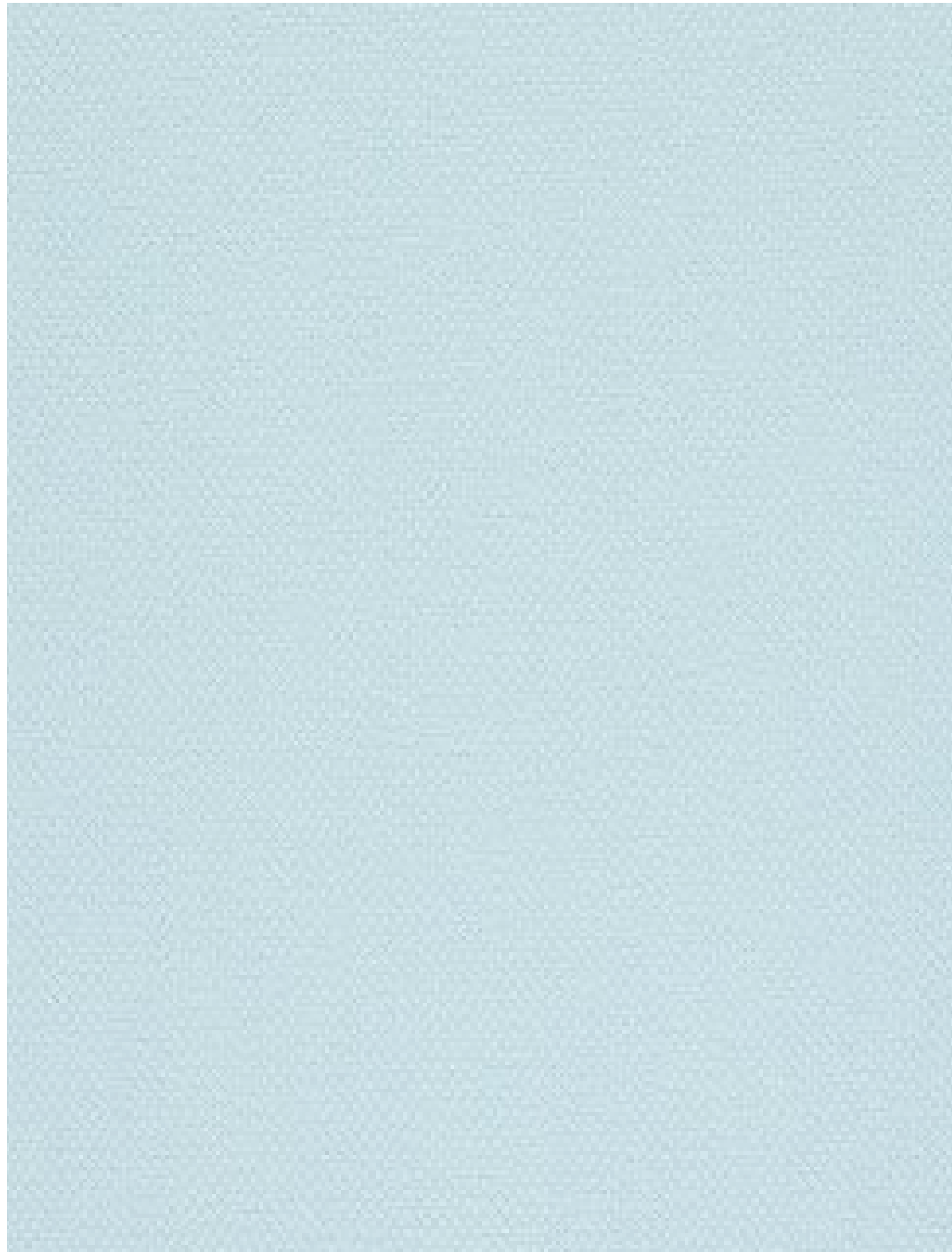
442



# Steelcut 2

Textile

Price category 2  
Manufacturer Kvadrat  
Materials 90% New wool, 10% Nylon  
Martindale 100.000  
Lightfastness 5-7  
Pilling 3-4



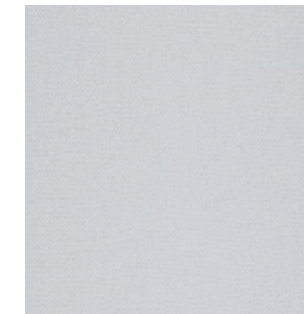
# Steelcut 2

Textile

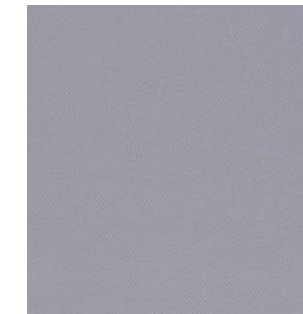
Price category 2  
Manufacturer Kvadrat  
Materials 90% New wool, 10% Nylon  
Martindale 100.000  
Lightfastness 5-7  
Pilling 3-4



110



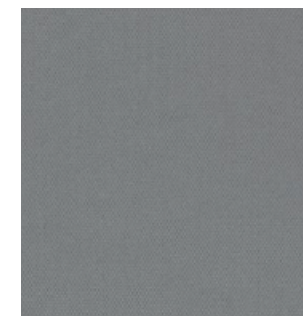
120



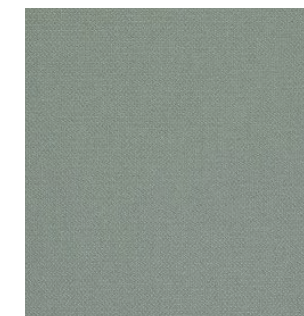
135



140



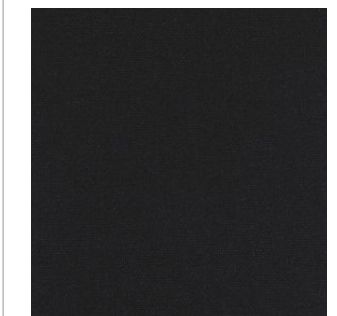
155



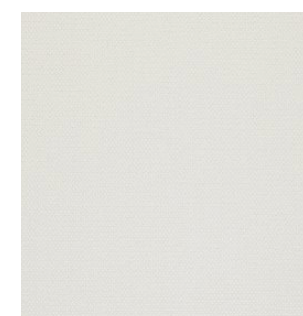
160



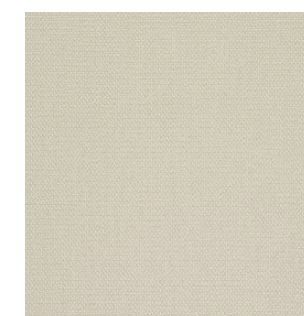
180



190



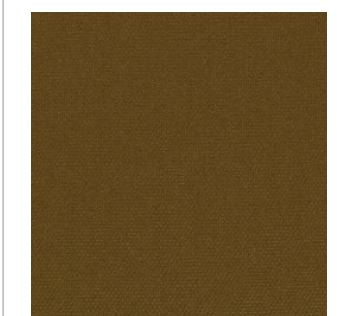
220



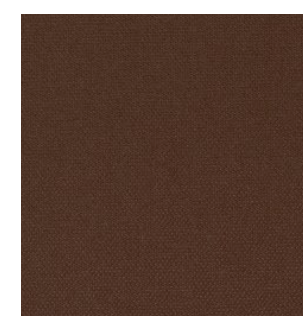
240



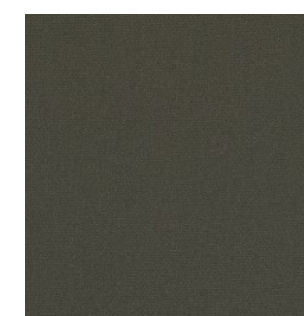
255



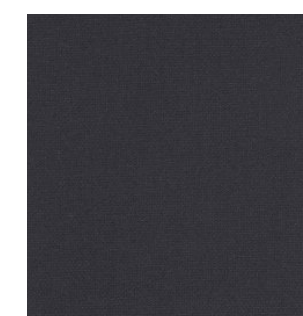
265



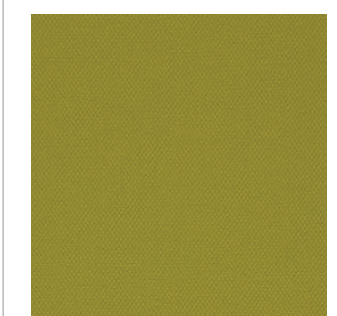
365



370



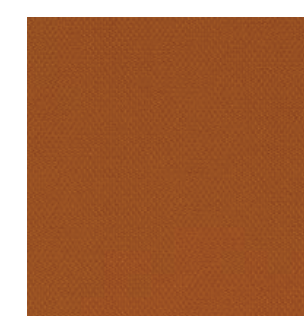
380



435



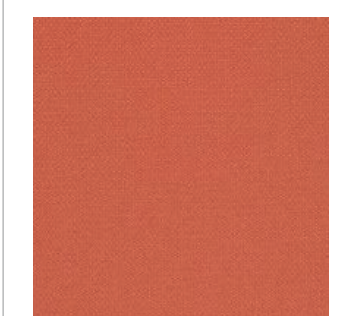
445



535



545



550



# Steelcut 2

Textile

Price category 2  
Manufacturer Kvadrat  
Materials 90% New wool, 10% Nylon  
Martindale 100.000  
Lightfastness 5-7  
Pilling 3-4



605



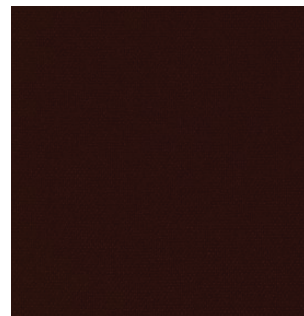
615



625



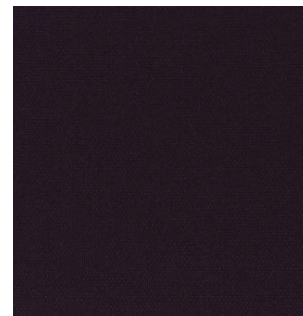
635



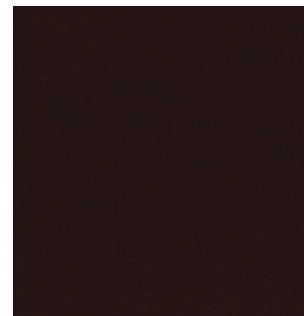
655



660



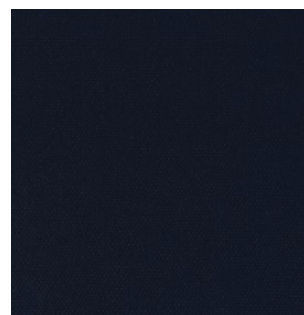
685



695



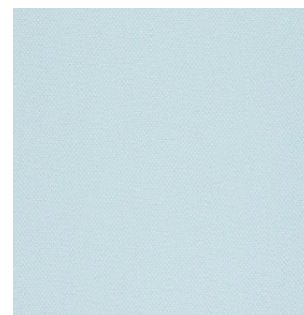
760



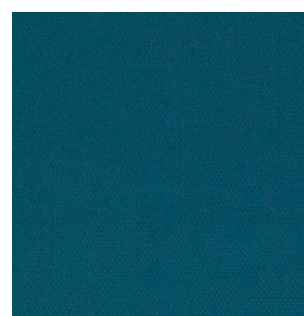
775



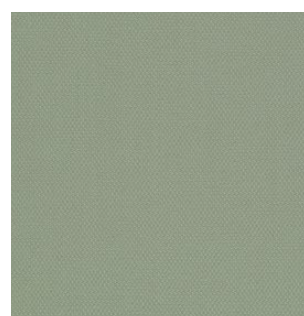
780



820



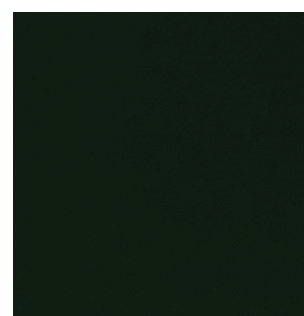
835



935



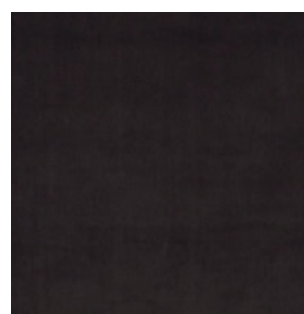
950



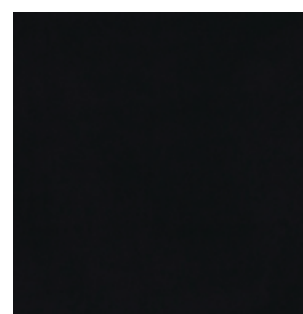
975



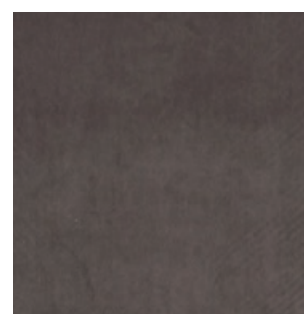
985



1122



0917



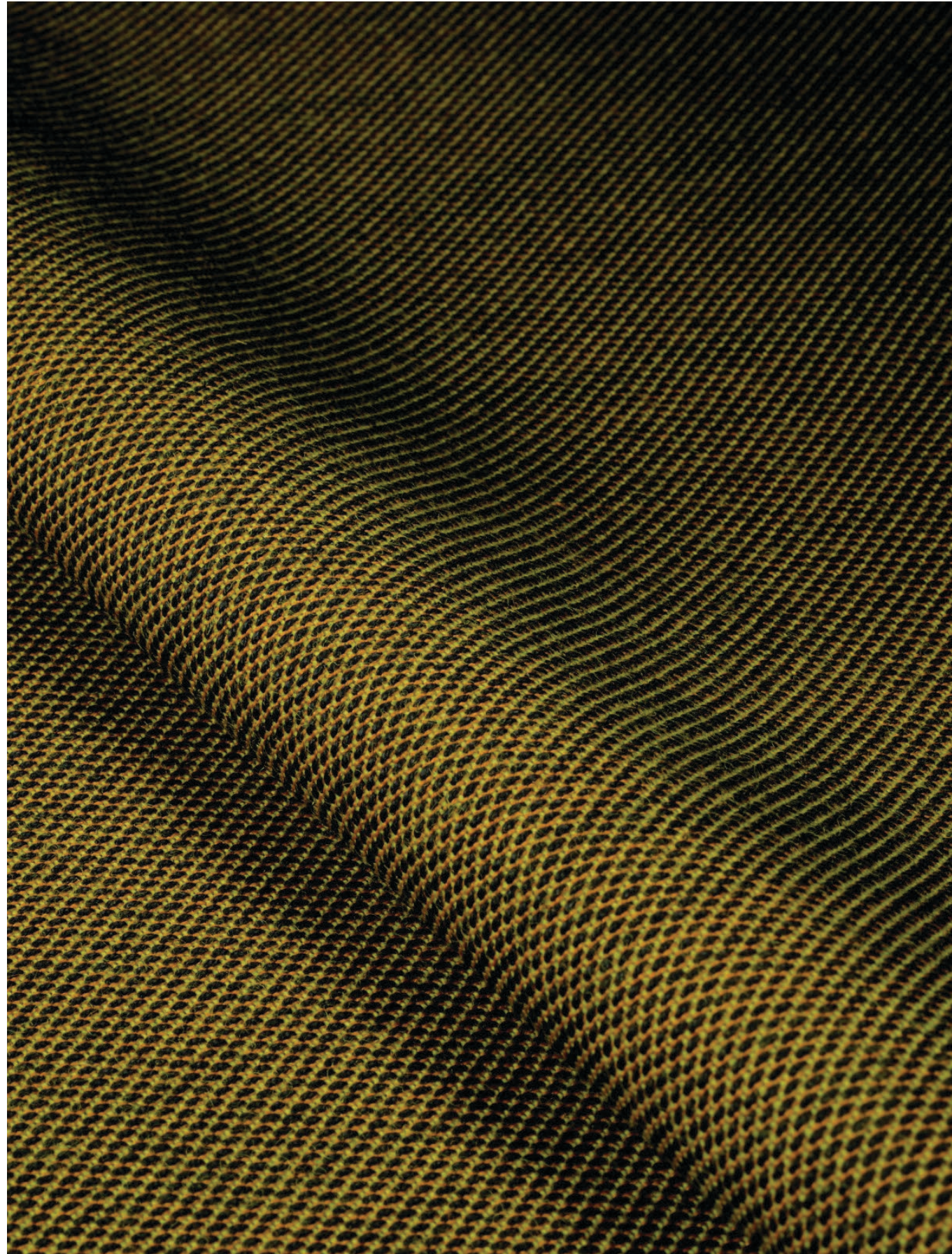
1362



# Steelcut Trio 3

Textile

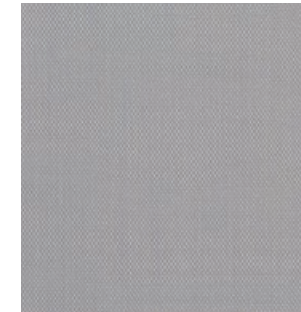
Price category 2  
Manufacturer Kvadrat  
Materials 90% New wool, 10% Nylon  
Martindale 100.000  
Lightfastness 5-7  
Pilling 4



# Steelcut Trio 3

Textile

Price category 2  
Manufacturer Kvadrat  
Materials 90% New wool, 10% Nylon  
Martindale 100.000  
Lightfastness 5-7  
Pilling 4



105



113



124



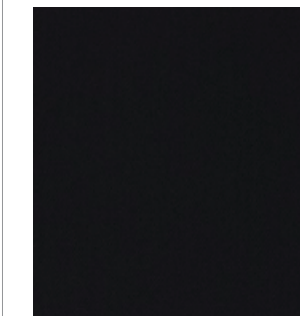
133



153



176



195



205



213



226



236



246



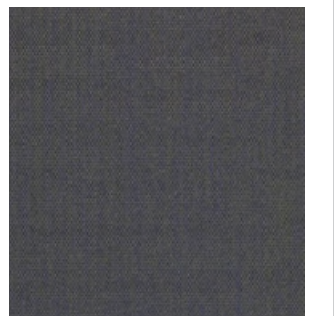
253



266



276



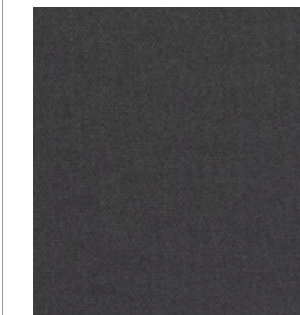
283



336



376



383



416



# Steelcut Trio 3

Textile

Price category 2  
Manufacturer Kvadrat  
Materials 90% New wool, 10% Nylon  
Martindale 100.000  
Lightfastness 5-7  
Pilling 4



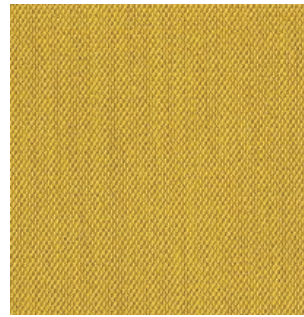
426



436



446



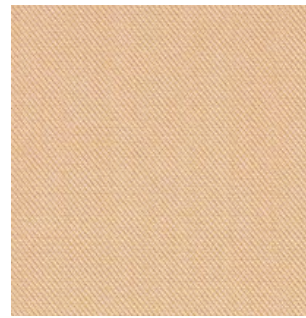
453



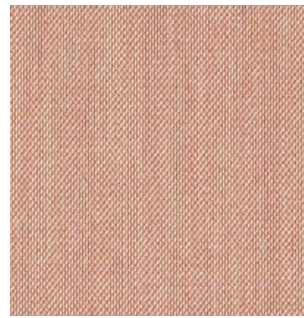
466



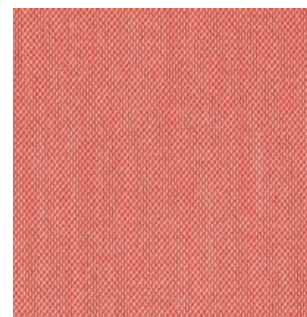
476



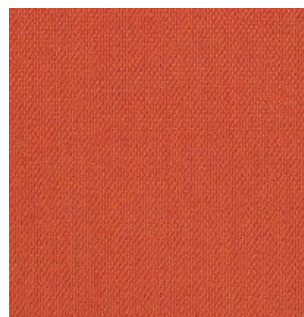
506



515



526



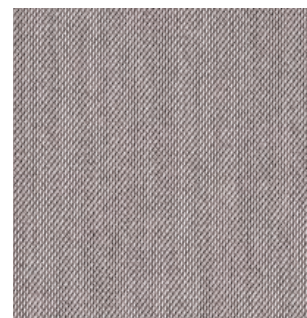
533



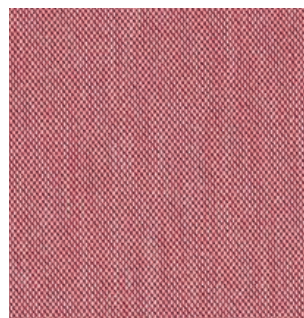
553



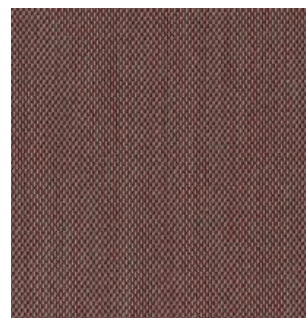
576



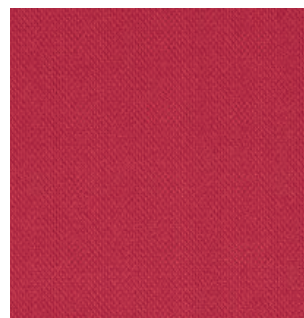
616



636



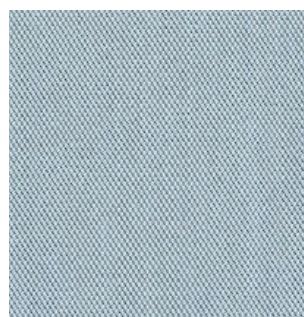
645



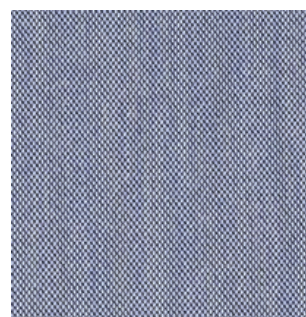
666



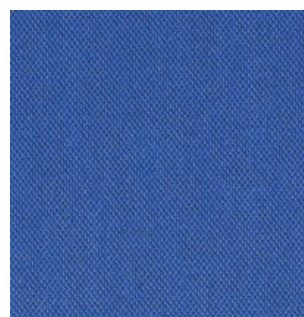
686



713



716

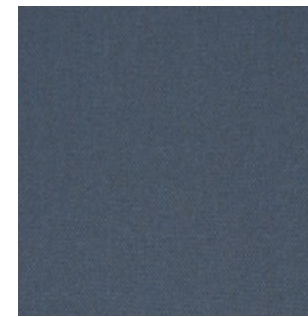


746

# Steelcut Trio 3

Textile

Price category 2  
Manufacturer Kvadrat  
Materials 90% New wool, 10% Nylon  
Martindale 100.000  
Lightfastness 5-7  
Pilling 4



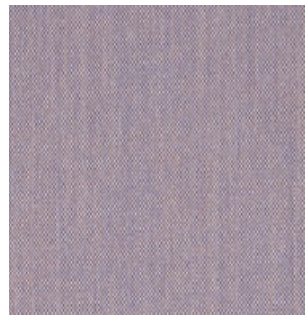
756



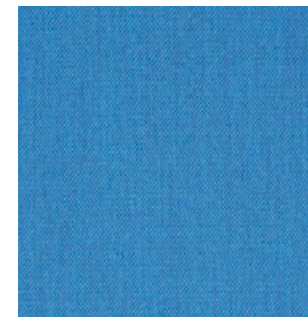
776



796



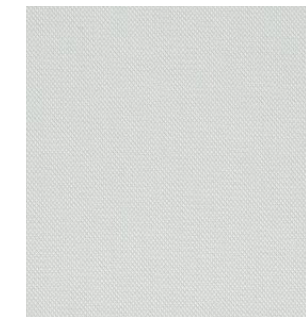
806



865



883



906



916



946



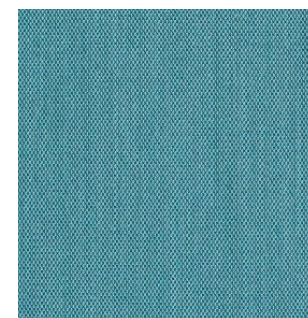
953



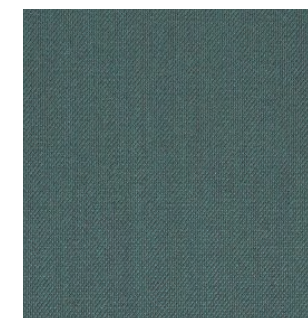
966



976



983



996



3

*Textile Category 3*



# Arctic

Textile

Price category 3  
Manufacturer JAB  
Materials 51% Polyacrylic,  
31% Viscose, 18% Polyester  
Martindale 30.000



# Arctic

Textile

Price category 3  
Manufacturer JAB  
Materials 51% Polyacrylic,  
31% Viscose, 18% Polyester  
Martindale 30.000



1-1365-040



1-1365-070



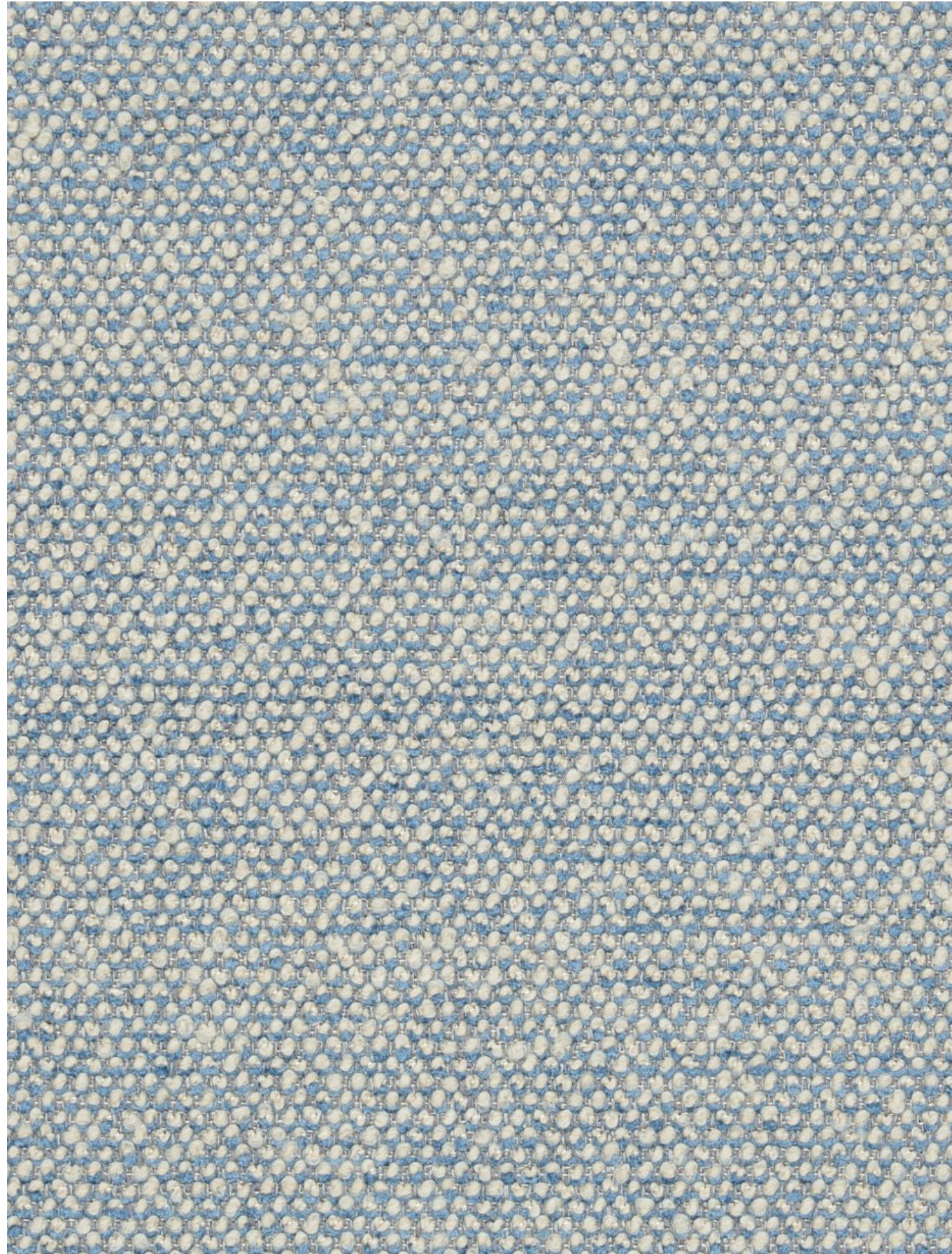
1-1365-091



# Safire

Textile

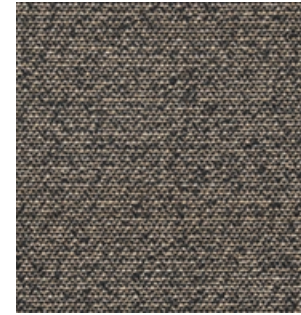
Price category 3  
Manufacturer Sahco  
Materials 43% Viscose, 17% Polyacrylic,  
15% New wool, 9% Cotton, 8% Linen,  
8% Polyester  
Martindale 40.000  
Lightfastness 6  
Pilling 3



# Safire

Textile

Price category 3  
Manufacturer Sahco  
Materials 43% Viscose, 17% Polyacrylic,  
15% New wool, 9% Cotton, 8% Linen, 8%  
Polyester  
Martindale 40.000  
Lightfastness 6  
Pilling 3



001



002



003



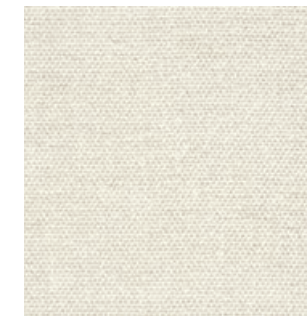
004



005



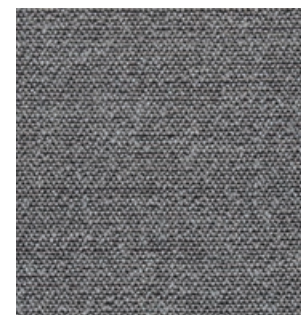
006



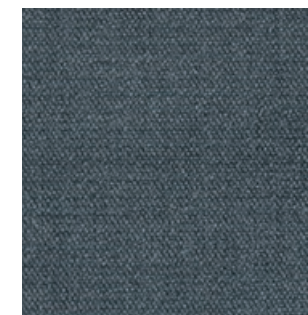
007



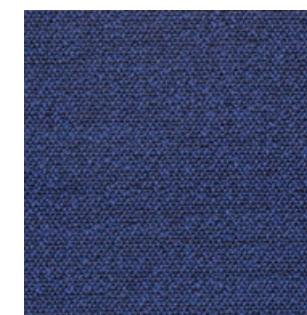
008



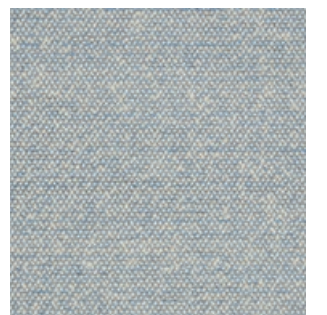
009



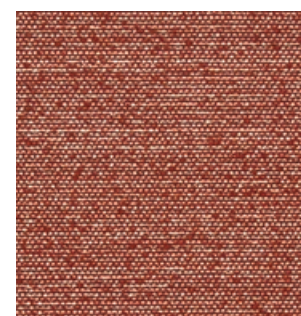
010



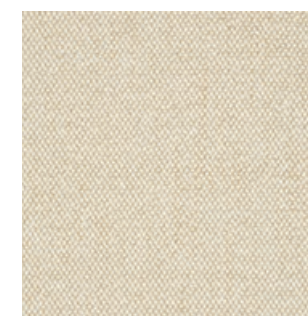
011



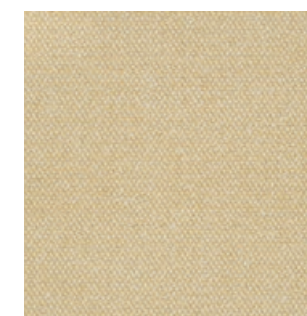
012



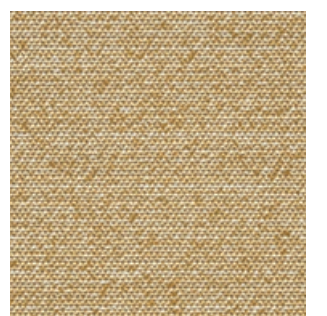
013



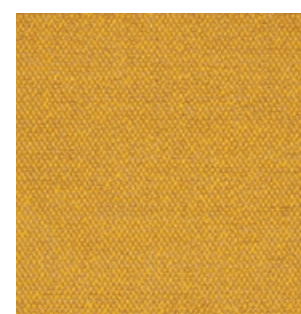
014



015



016



017



# Vidar 4

Textile

Price category 3  
Manufacturer Kvadrat  
Materials 94% new wool, 6% nylon  
Martindale 100,000  
Lightfastness 7 (ISO 1-8)  
Pilling 4 (ISO 1-5)



# Vidar 4

Textile

Price category 3  
Manufacturer Kvadrat  
Materials 94% new wool, 6% nylon  
Martindale 100,000  
Lightfastness 7 (ISO 1-8)  
Pilling 4 (ISO 1-5)

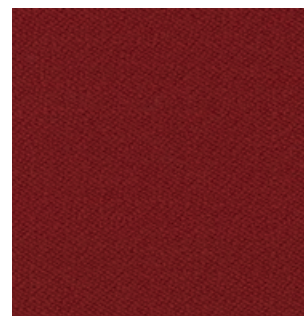




# Vidar 4

Textile

Price category 3  
Manufacturer Kvadrat  
Materials 94% new wool, 6% nylon  
Martindale 100,000  
Lightfastness 7 (ISO 1-8)  
Pilling 4 (ISO 1-5)



0582



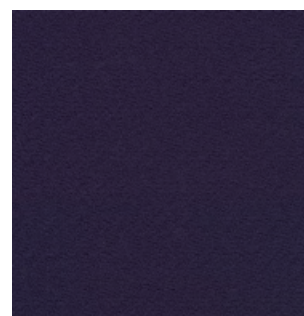
0622



0633



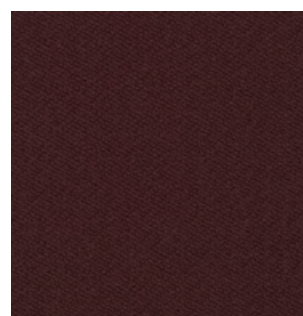
0653



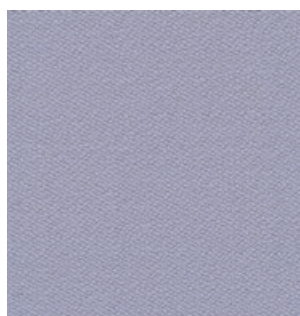
0656



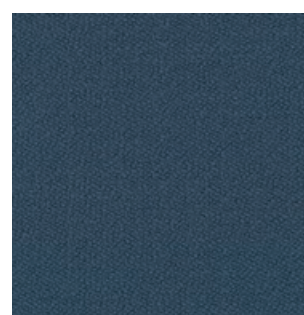
0676



0693



0723



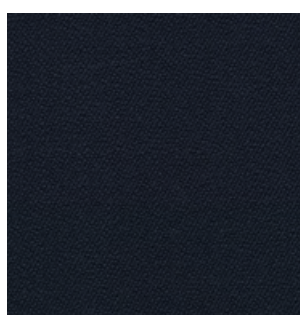
0733



0745



0772



0786



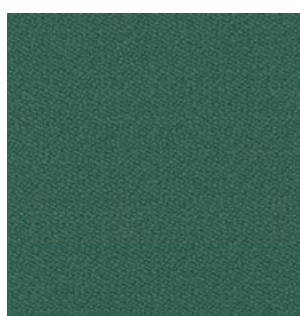
0872



0913



0932



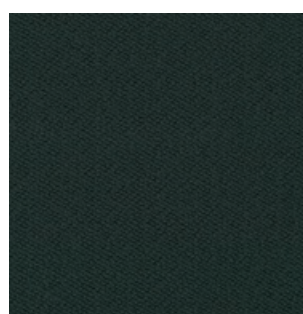
0943



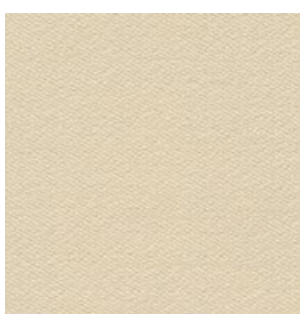
0956



0972



1062



1511

# Vidar 4

Textile

Price category 3  
Manufacturer Kvadrat  
Materials 94% new wool, 6% nylon  
Martindale 100,000  
Lightfastness 7 (ISO 1-8)  
Pilling 4 (ISO 1-5)



1880



# Zero

Textile

Price category 3  
Manufacturer Kvadrat  
Materials 65% cotton, 20% polyacrylic,  
15% polyester  
Martindale 70,000  
Lightfastness 5-6 (ISO 1-8)  
Pilling 5 (ISO 1-5)



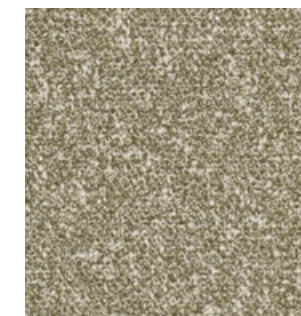
# Zero

Textile

Price category 3  
Manufacturer Kvadrat  
Materials 65% cotton, 20% polyacrylic,  
15% polyester  
Martindale 70,000  
Lightfastness 5-6 (ISO 1-8)  
Pilling 5 (ISO 1-5)



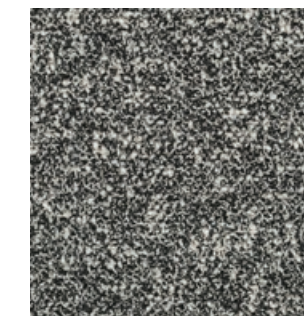
0001



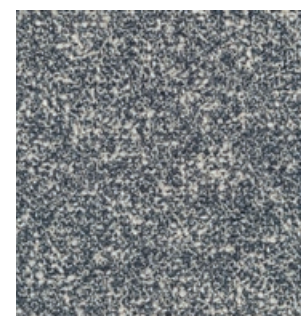
0002



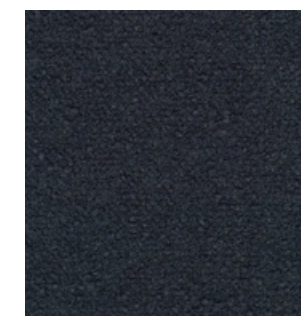
0003



0004



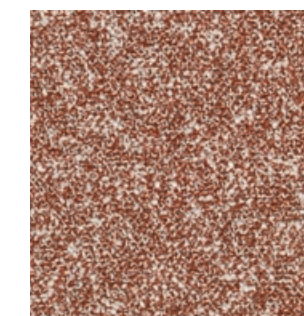
0005



0006



0007



0008



0009



0010



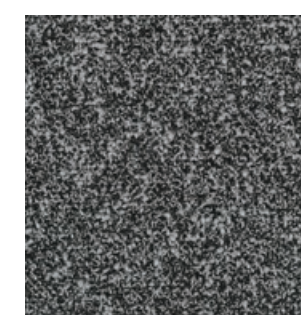
0011



0012



0013



0014



0015



0016



**4**

*Textile Category 4*



# Doppiopanama

Textile

Price category 4  
Manufacturer Dedar  
Materials 60% Cotton, 35% Polyester  
5% Polyamide  
Martindale 35.000



# Doppiopanama

Textile

Price category 4  
Manufacturer Dedar  
Materials 60% Cotton, 35% Polyester  
5% Polyamide  
Martindale 35.000



T14012\_001



T14012\_002



T14012\_003



T14012\_004



T14012\_005



# Grand Mohair

Textile

Price category 4  
Manufacturer Danish Art Weaving  
Materials 100% Mohair  
Martindale Being tested  
(>200.000 Wyzenbeek)  
Lightfastness 4,5 (ISO 1-8)  
Pilling Being tested  
Certificates Oeko-Tex



# Grand Mohair

Textile

Price category 4  
Manufacturer Danish Art Weaving  
Materials 100% Mohair  
Martindale Being tested  
(>200.000 Wyzenbeek)  
Lightfastness 4,5 (ISO 1-8)  
Pilling Being tested  
Certificates Oeko-Tex



1103



2600



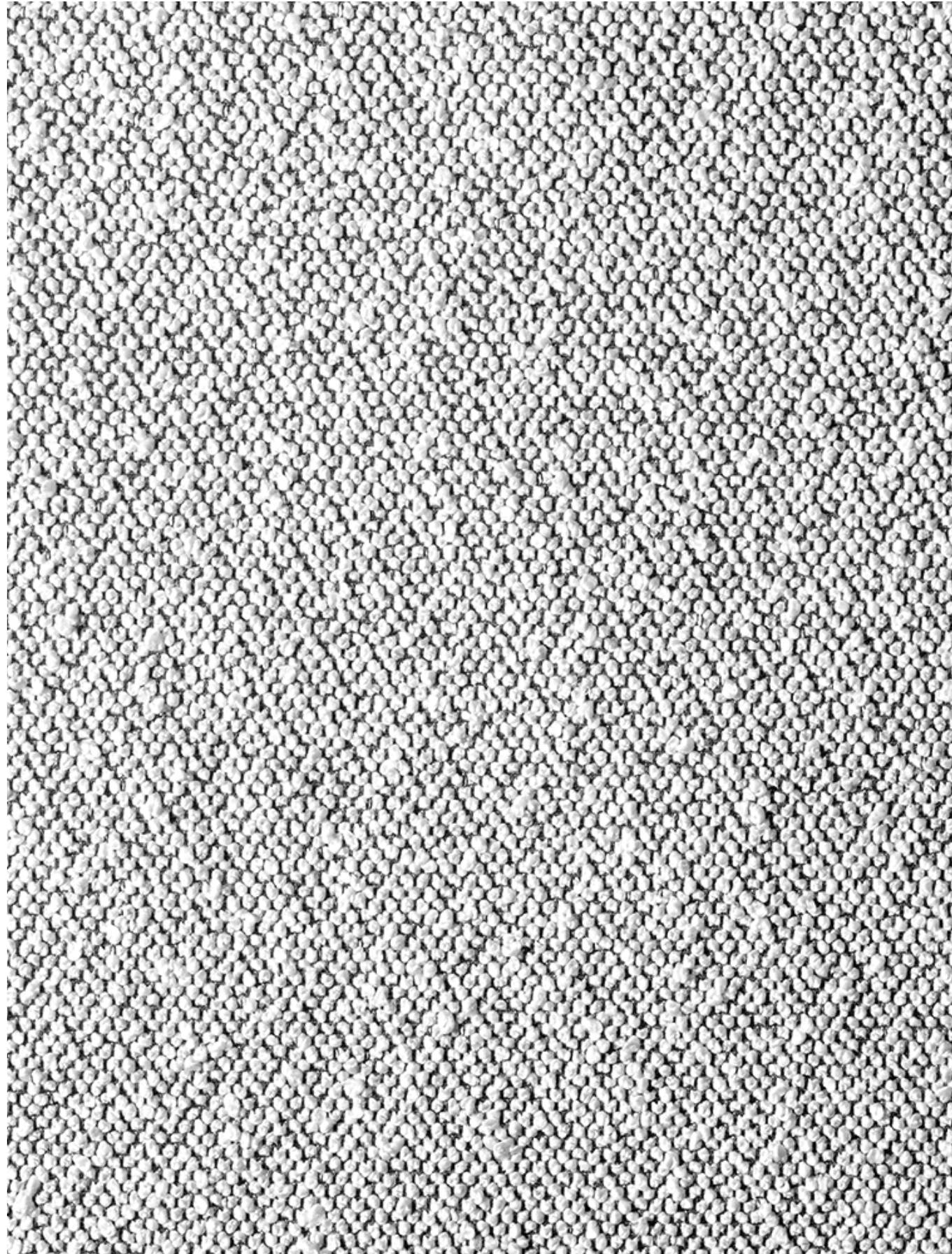
8205



# Lupo

Textile

Price category 4  
Manufacturer Dedar  
Materials 72% Wool, 27% Cotton  
1% Polyamide  
Martindale 40.000



# Lupo

Textile

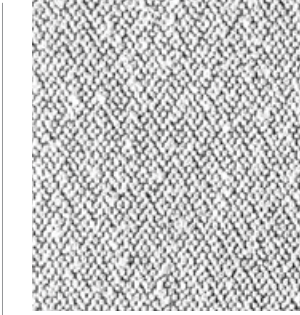
Price category 4  
Manufacturer Dedar  
Materials 72% Wool, 27% Cotton  
1% Polyamide  
Martindale 40.000



T19028\_001



T19028\_002



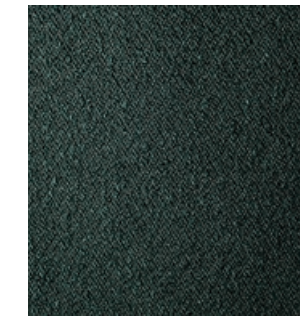
T19028\_003



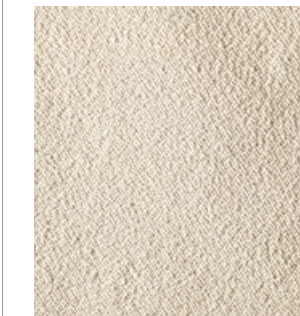
T19028\_004



T19028\_005



T19028\_006



T19028\_007



T19028\_008



T19028\_009



# Upholstery Selection & Furniture

The by Lassen upholstery programme shows an overview of our textile and leather standard programme. All textile and leather collections are available in all colours. Please note that the colour references are only intended as a guide. For further information please see manufacturer websites, or contact your local by Lassen sales representative.

Selection of textiles or leather outside of our upholstery programme, is subject to final testing and approval. Additional deliverytime may also occur.

sorensenleather.com  
 nevotex.com  
 ca-mo.com  
 skandilock.com



# Upholstery Selection & Furniture

Use table to determine the upholstery options available for fabric-covered items.

	THE TIRED MAN	MY OWN CHAIR	INGEBORG	VILHELM	MINGLE	CONSTANCE CHAIR
<b>TEXTILE</b>						
<b>PRICE CATEGORY 1</b>						
Dakar, Nevotex	•	•	•	•		
Ultra, Sørensen Leather	•	•	•	•		
<b>PRICE CATEGORY 2</b>						
Dunes, Sørensen Leather	•	•	•	•		
Nevada, Camo	•	•	•	•		
Nuance, Sørensen Leather	•	•	•	•		
Shade, Sørensen Leather	•	•	•	•		
<b>PRICE CATEGORY 3</b>						
Royal Nubuck, Sørensen Leather	•	•	•	•		
Sheepskin, Skandilock	•	•	•	•	•	•
<b>PRICE CATEGORY 4</b>						
Elegance, Sørensen Leather	•	•				



**1**

*Leather Category 1*



# Dakar

Leather

Price category 1  
Manufacturer Nevotex  
Materials Aniline leather  
Thickness 0.9 - 1.1 mm  
Certificate OEKO-TEX®

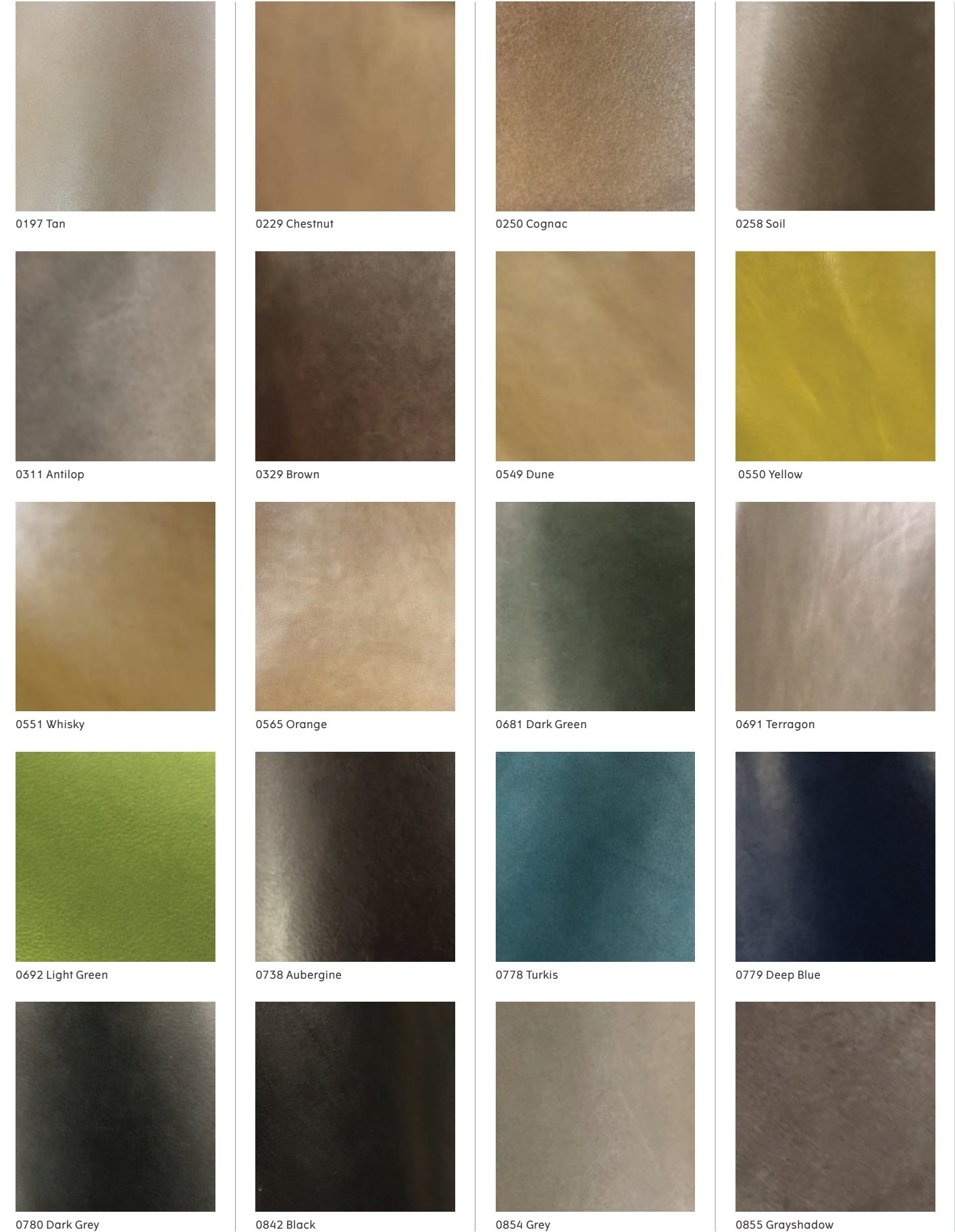


Tailor Sofa, Dark Stained Oak / Dakar 0311, by Rui Alves

# Dakar

Leather

Price category 1  
Manufacturer Nevotex  
Materials Aniline leather  
Thickness 0.9 - 1.1 mm  
Certificate OEKO-TEX®

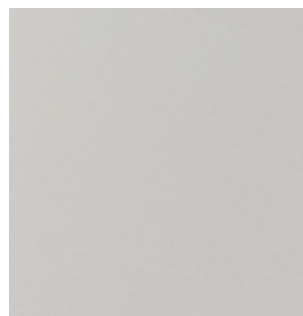




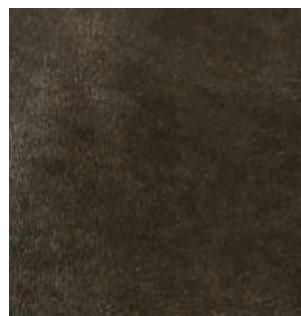
# Dakar

Leather

Price category 1  
Manufacturer Nevotex  
Materials Aniline leather  
Thickness 0.9 - 1.1 mm  
Certificate OEKO-TEX®



01015 White



03009 Ciocco



04009 Parrot



04010 Pot-Porry



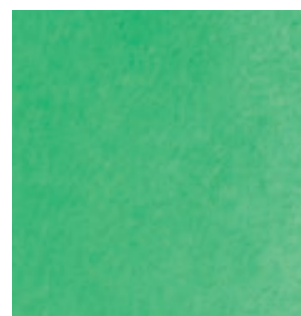
04060 Purple



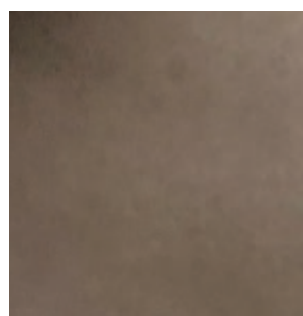
04109 Red



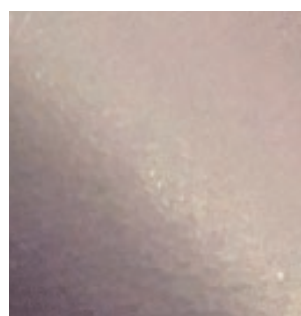
04147 Dark Red



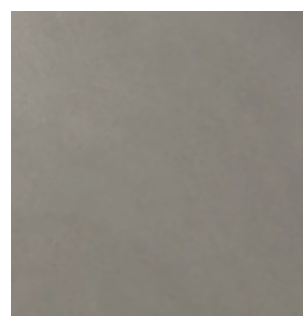
06013 Green



06048 Peatmoos



07008 Dark Purple



08079 Light Grey



# Ultra

Leather

Price category 1  
Manufacturer Sørensen Leather  
Materials Protected leather  
Thickness 0.9 - 1.1 mm



# Ultra

Leather

Price category 1  
Manufacturer Sørensen Leather  
Materials Protected leather  
Thickness 0.9 - 1.1 mm

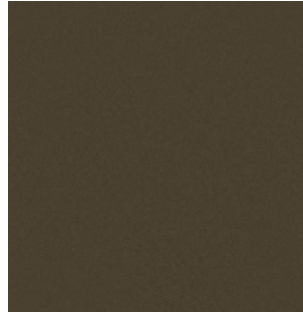




# Ultra

Leather

Price category 1  
Manufacturer Sørensen Leather  
Materials Protected leather  
Thickness 0.9 - 1.1 mm



Moss - 41569



Oat - 41568



Smoke - 41567



2

*Leather Category 2*



# Dunes

Leather

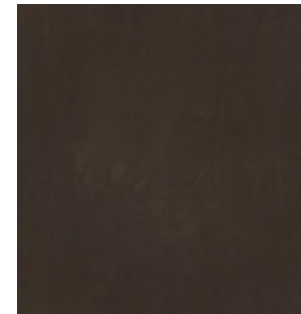
Price category 2  
Manufacturer Sørensen Leather  
Materials Aniline leather  
Thickness 1.1 - 1.3 mm  
Certificate Nordic Swan Ecolabel



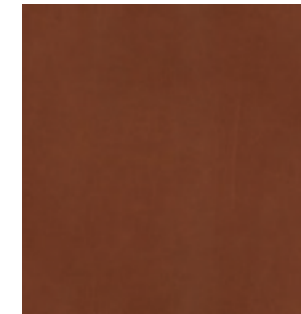
# Dunes

Leather

Price category 2  
Manufacturer Sørensen Leather  
Materials Aniline leather  
Thickness 1.1 - 1.3 mm  
Certificate Nordic Swan Ecolabel



Dark Brown - 21001



Rust - 21002



Camel - 21004



Anthrazite - 21003



Cognac - 21000



Racing green - 21005



Grey - 21007



# Nevada

Leather

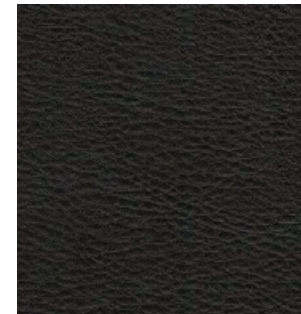
Price category 2  
Manufacturer Camo  
Materials Aniline leather  
Thickness 1,3-1,5 mm



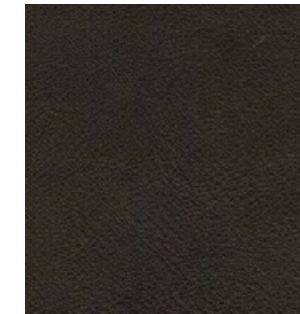
# Nevada

Leather

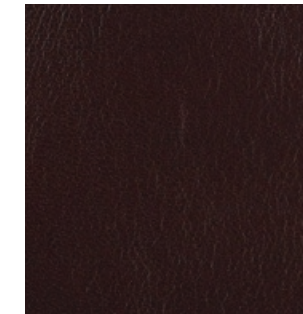
Price category 2  
Manufacturer Camo  
Materials Aniline leather  
Thickness 1,3-1,5 mm



Black 0500



Brown 2000



Coffee 2034



Burgundy 2301



Ferrari Red 2333



Cognac 2488



Sand 2694



# Nuance

Leather

Price category 2  
Manufacturer Sørensen Leather  
Materials Protected leather  
Thickness 1.1 - 1.3 mm



# Nuance

Leather

Price category 2  
Manufacturer Sørensen Leather  
Materials Protected leather  
Thickness 1.1 - 1.3 mm





# Shade

Leather

Price category 2  
Manufacturer Sorensen Leather  
Materials Protected Aniline leather  
Thickness 1.1 - 1.3 mm



# Shade

Leather

Price category 2  
Manufacturer Sorensen Leather  
Materials Protected Aniline leather  
Thickness 1.1 - 1.3 mm





3

*Leather Category 3*



# Royal Nubuck

Leather

Price category 3  
Manufacturer Sørensen Leather  
Materials Aniline leather  
Thickness 1.2 – 1.6 mm



Harbour Dining Chair, Dark Stained Oak / Royal Nubuck 30253, by Norm Architects

# Royal Nubuck

Leather

Price category 3  
Manufacturer Sørensen Leather  
Materials Aniline leather  
Thickness 1.4 – 1.6 mm





# Sheepskin

Sheepskin

Price category 3  
Manufacturer Skandilock  
Materials Sheepskin  
Thickness 17mm



# Sheepskin

Sheepskin

Price category 3  
Manufacturer Skandilock  
Materials Sheepskin  
Thickness 17mm



Off white



Sahara



Moonlight



Honey



Espresso



Green Tea



**4**

*Leather Category 4*



# Elegance

Leather

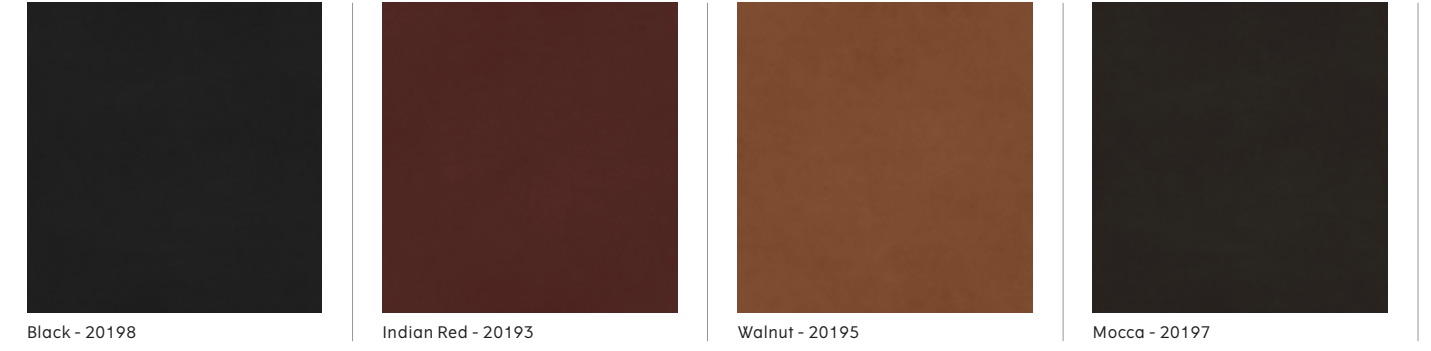
Price category 4  
Manufacturer Sørensen Leather  
Materials Aniline leather  
Thickness 1.2 – 1.4 mm



# Elegance

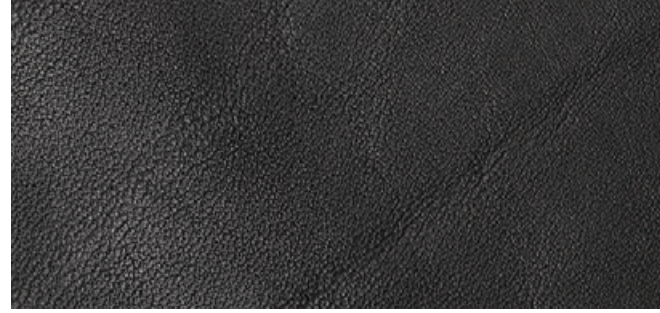
Leather

Price category 4  
Manufacturer Sørensen Leather  
Materials Aniline leather  
Thickness 1.2 – 1.4 mm





# Natural Markings On Leather



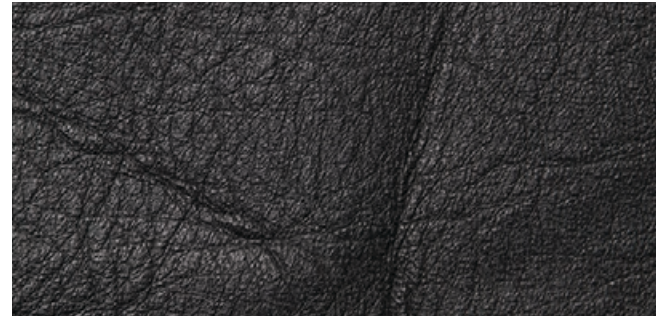
FAT WRINKLE



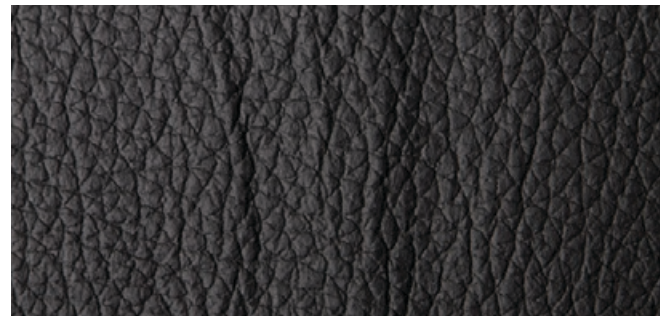
SCAR / INSECT BITES



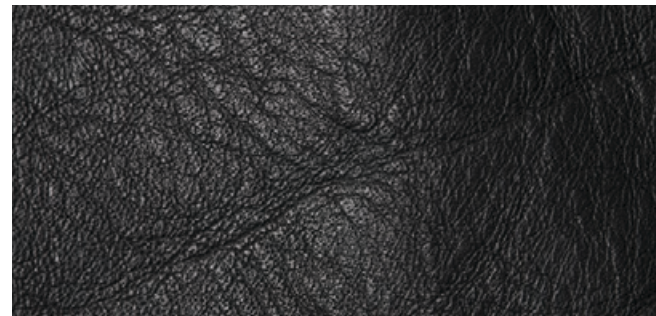
FOLDS



BUTCHING SCAR



HEALED SCARS



FAT WRINKLES

Individual and unique markings may appear on the leather and should not be considered defects.