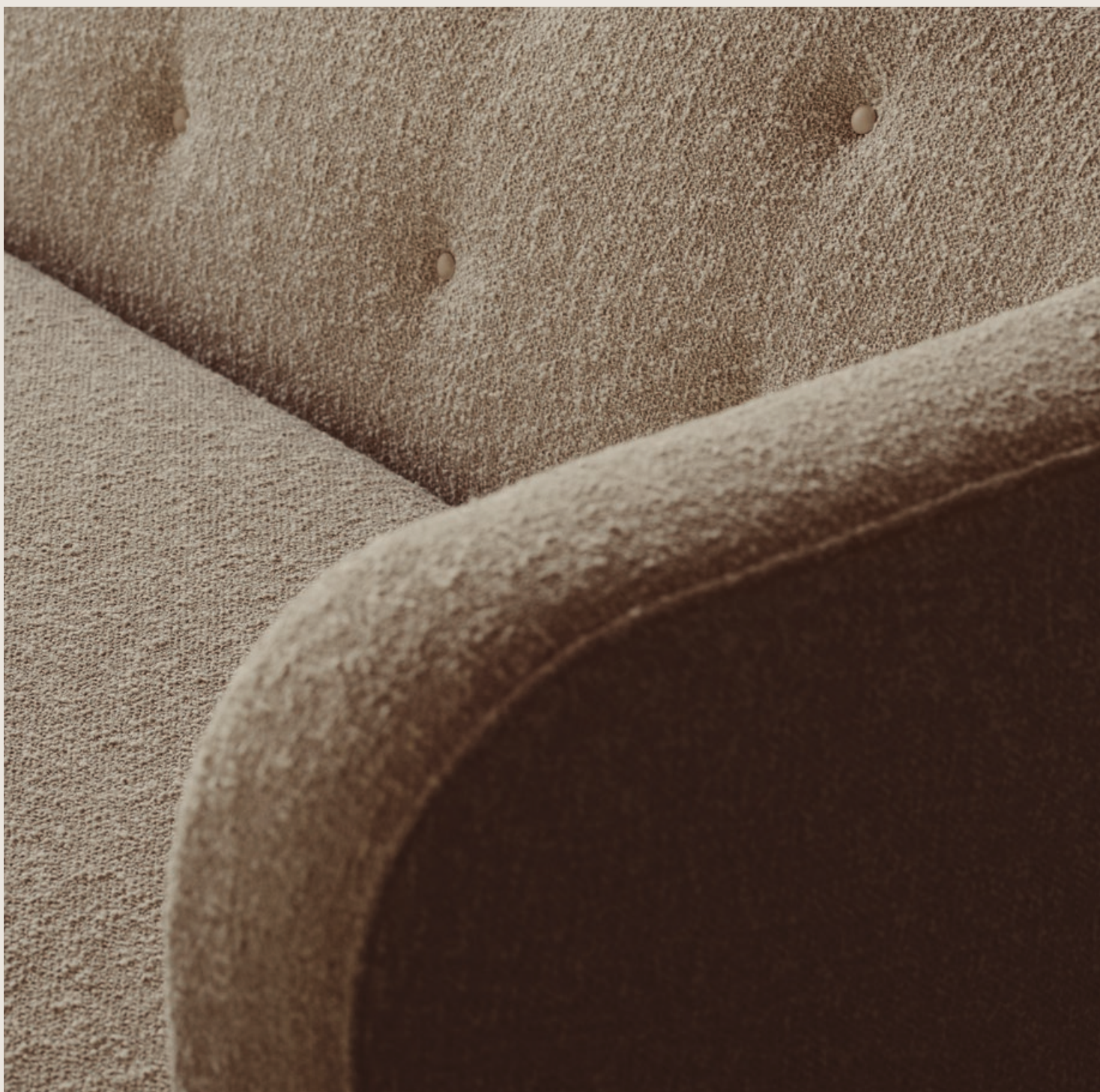


*by Lassen.*  
Copenhagen

Upholstery Programme EU  
2023



*Upholstery*

## By Lassen Upholstery Program

The by Lassen Upholstery Program is an overview of the textile and leathers available for by Lassen upholstered furniture. All textile and leather options are available in all colors. You'll find over 100 fabric and leather options, with the most popular configurations available with expedited delivery in our Quick Ship program.

Custom upholstery orders from our by Lassen Upholstery Program (SPEC) are ready to ship with standard delivery lead times. Our Fixed Combinations listed in this Brand Book are suggested upholsteries selected by our design team, and deliver with standard lead times. We are happy to upholster furniture using customer's own materials (COM) with extended delivery lead times, upon fabric approval. COM products are to be calculated by PCIT if in textile and PCIL if in leather, excluding the price of the fabric.

Please note that the color references in this upholstery programme are only intended as a guide. For further information please see manufacturer websites, or contact your local by Lassen Sales Representative for samples or further information.

kvadrat.dk  
sahco.com  
nevotex.com  
jab.de  
hbftextiles.com  
danishartweaving.com  
dedar.com



## Upholstery Selection & Furniture

Use table to determine the upholstery options available for fabric-covered items.

	THE TIRED MAN	MY OWN CHAIR	INGEBORG	VILHELM	MINGLE	CONSTANCE
<b>TEXTILE</b>						
<b>PRICE CATEGORY 0</b>						
MENU Bouclé	•	•	•	•	•	•
<b>PRICE CATEGORY 1</b>						
Champion, JAB	•	•	•	•	•	•
City Velvet, JAB	•	•	•	•	•	•
Hot Madison Reboot, JAB	•	•	•	•	•	•
Maple, Kvadrat	•	•	•	•	•	•
Remix 3, Kvadrat	•	•	•	•	•	•
Re-Wool, Kvadrat	•	•	•	•	•	•
Illusion, Artificial Leather, Nevotex	•	•	•	•	•	•
<b>PRICE CATEGORY 2</b>						
Canvas 2, Kvadrat	•	•	•	•	•	•
Clay, Sahco, Kvadrat	•	•	•	•	•	•
Colline 2, Kvadrat	•	•	•	•	•	•
Fiord 2, Kvadrat	•	•	•	•	•	•
Hallingdal 65, Kvadrat	•	•	•	•	•	•
Moss, Sahco, Kvadrat	•	•	•	•	•	•
Reflect, Kvadrat	•	•	•	•	•	•
Savanna, Kvadrat	•	•	•	•	•	•
Steelcut 2, Kvadrat	•	•	•	•	•	•
Steelcut Trio 3, Kvadrat	•	•	•	•	•	•
<b>PRICE CATEGORY 3</b>						
Arctic, JAB	•	•	•	•	•	•
Safire, Sahco, Kvadrat	•	•	•	•	•	•
Vidar 4, Kvadrat	•	•	•	•	•	•
Zero, Sahco, Kvadrat	•	•	•	•	•	•
<b>PRICE CATEGORY 4</b>						
Doppiopanama, Dedar	•	•	•	•	•	•
Grand Mohair, Danish Art Weaving	•	•	•	•	•	•
Lupo, Dedar	•	•	•	•	•	•

*O*

*Textile Category 0*

# MENU Bouclé

Textile

Price category 0  
Materials 78% Acrylic,  
20% Polyester, 2% Viscose  
Martindale 60.000  
Lightfastness 5-7  
Pilling 4



# MENU Bouclé

Textile

Price category 0  
Materials 78% Acrylic,  
20% Polyester, 2% Viscose  
Martindale 60.000  
Lightfastness 5-7  
Pilling 4



02



06



08



07



15



16



20

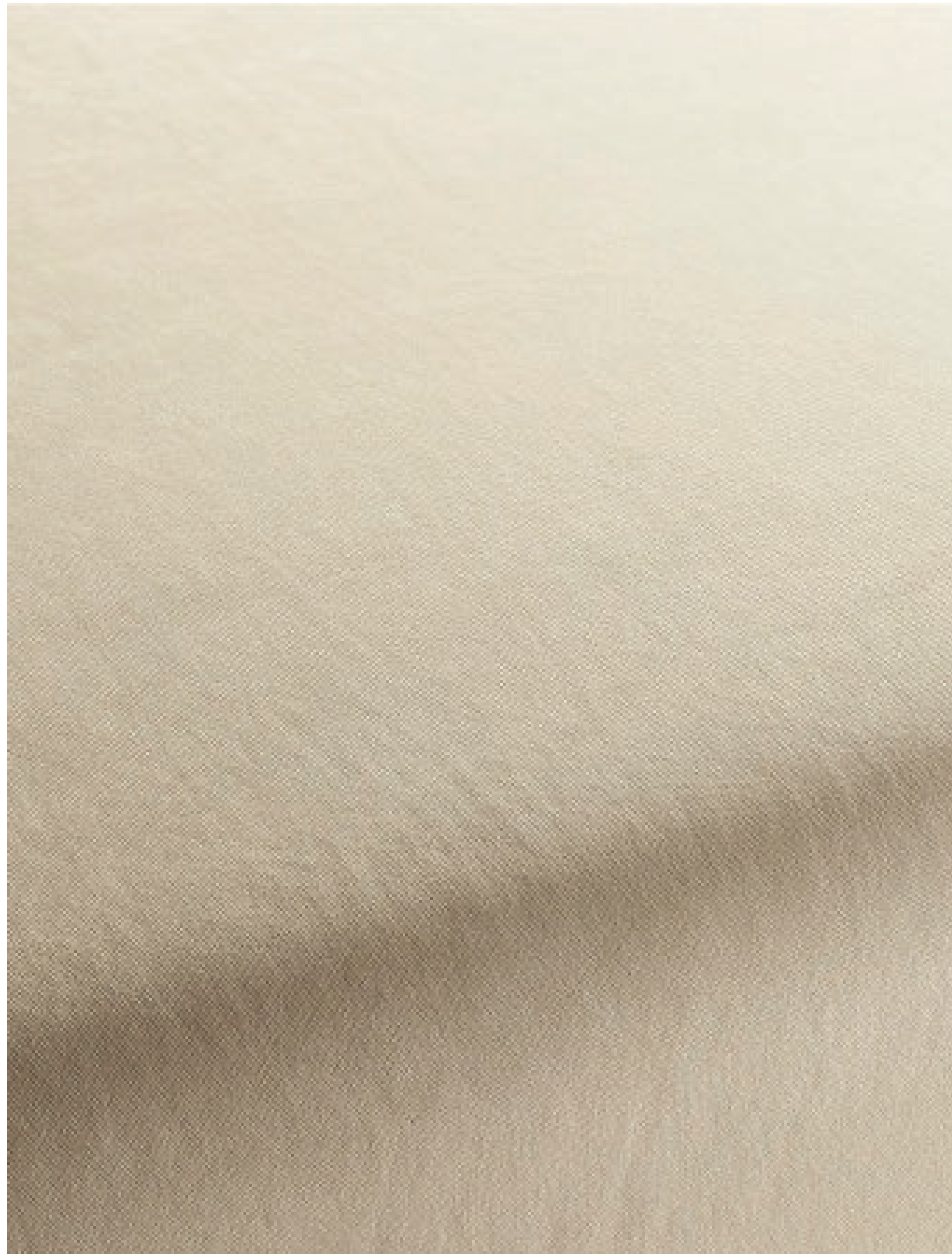
**1**

*Textile Category 1*

# Champion

Textile

Price category 1  
Manufacturer JAB  
Materials 100% Polyester  
Martindale 70.000  
Lightfastness 5



# Champion

Textile

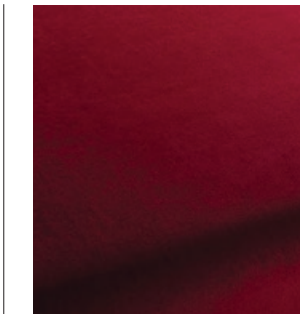
Price category 1  
Manufacturer JAB  
Materials 100% Polyester  
Martindale 70.000  
Lightfastness 5



1-3114-010



1-3114-011



1-3114-012



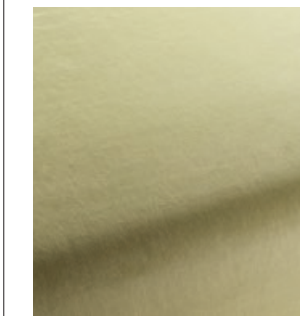
1-3114-020



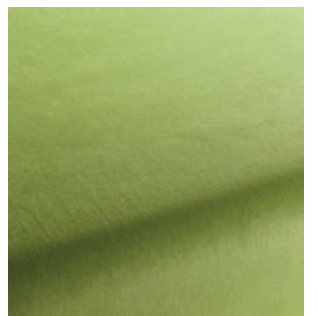
1-3114-021



1-3114-022



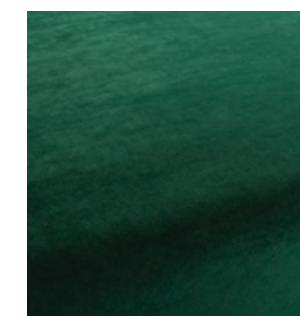
1-3114-030



1-3114-031



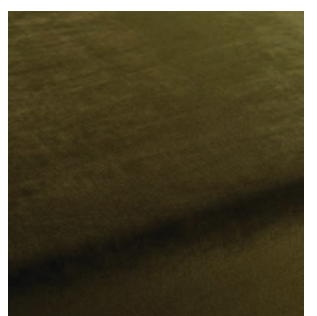
1-3114-032



1-3114-033



1-3114-034



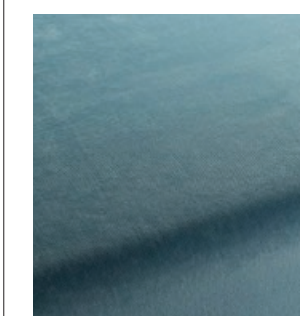
1-3114-035



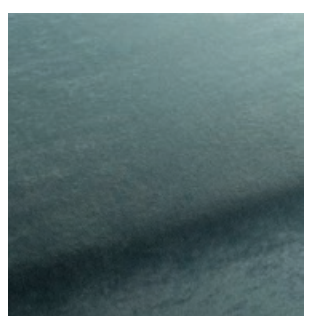
1-3114-040



1-3114-041



1-3114-050



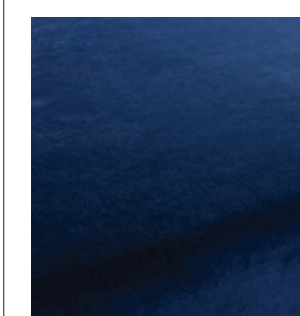
1-3114-051



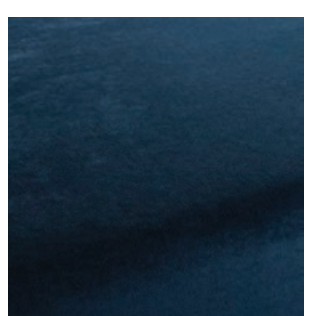
1-3114-052



1-3114-053



1-3114-054



1-3114-055

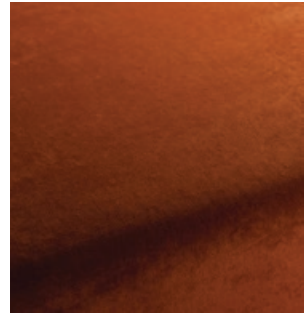
# Champion

Textile

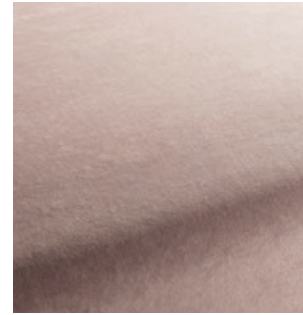
Price category 1  
Manufacturer JAB  
Materials 100% Polyester  
Martindale 70.000  
Lightfastness 5



1-3114-060



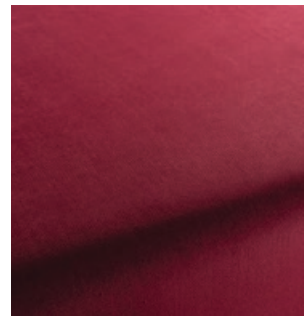
1-3114-061



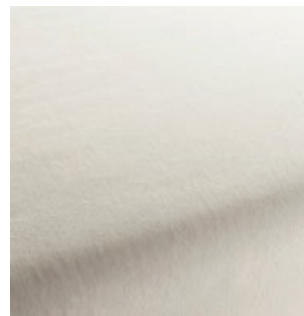
1-3114-062



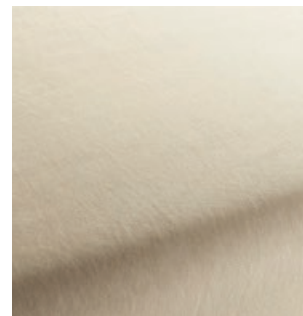
1-3114-063



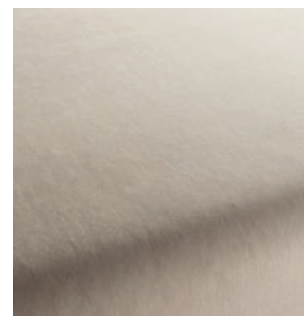
1-3114-064



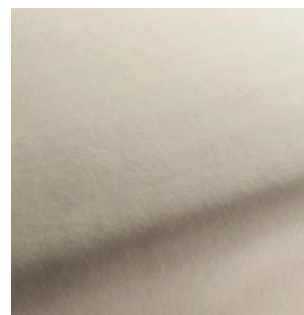
1-3114-070



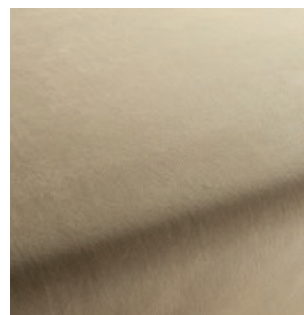
1-3114-071



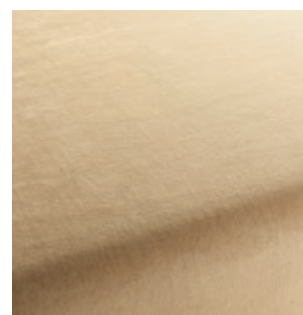
1-3114-072



1-3114-073



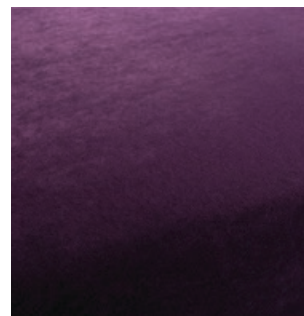
1-3114-074



1-3114-075



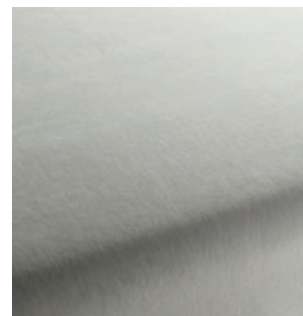
1-3114-080



1-3114-081



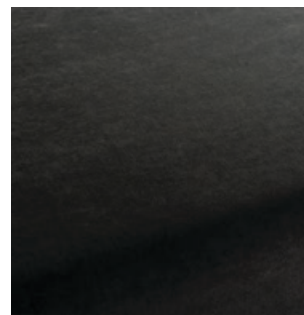
1-3114-082



1-3114-091



1-3114-092





# City Velvet

Textile

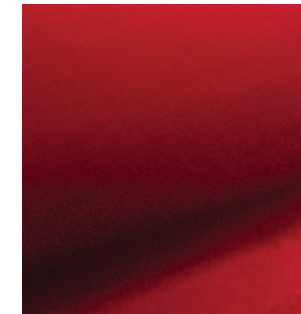
Price category 1  
Manufacturer JAB  
Materials 100% Polyester  
Martindale 100.000  
Lightfastness 3-5  
Pilling 4-5



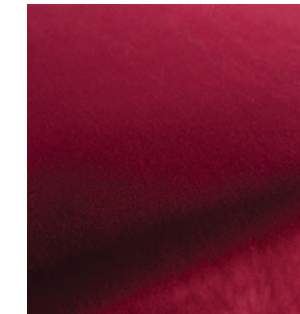
# City Velvet

Textile

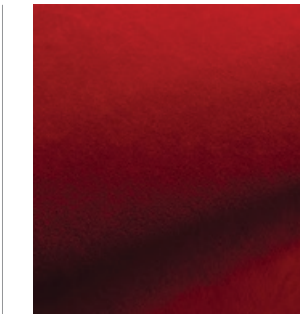
Price category 1  
Manufacturer JAB  
Materials 100% Polyester  
Martindale 100.000  
Lightfastness 3-5  
Pilling 4-5



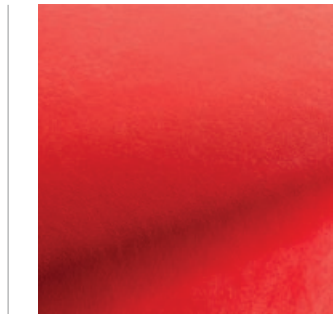
CA7832-010



CA7832-011



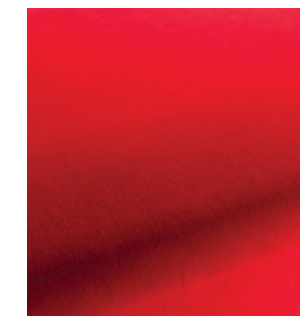
CA7832-012



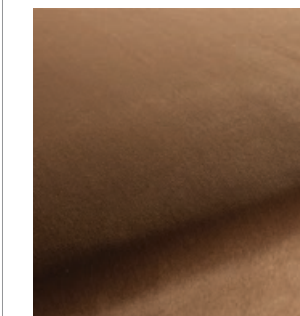
CA7832-013



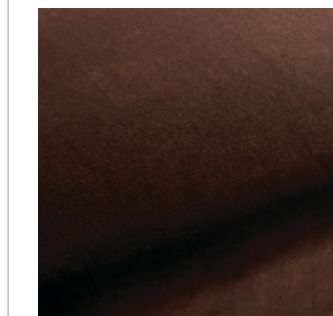
CA7832-014



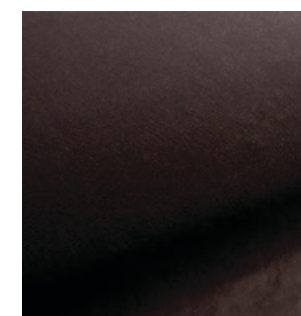
CA7832-015



CA7832-020



CA7832-021



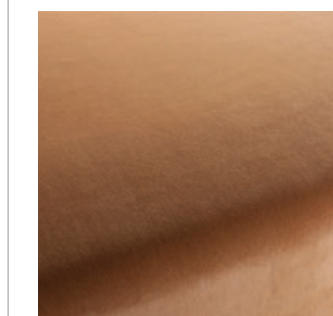
CA7832-022



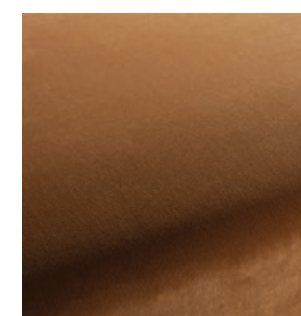
CA7832-023



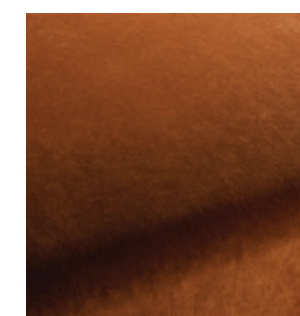
CA7832-024



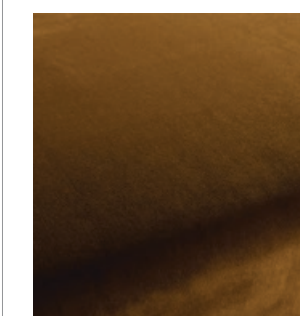
CA7832-025



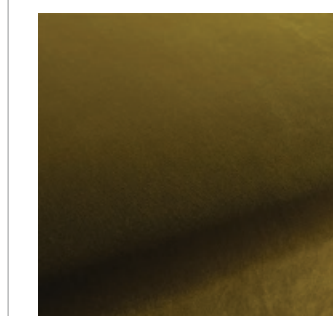
CA7832-026



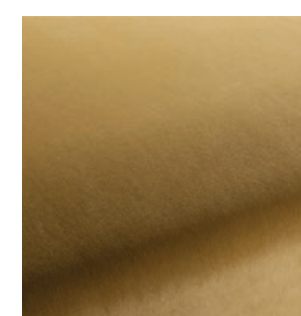
CA7832-027



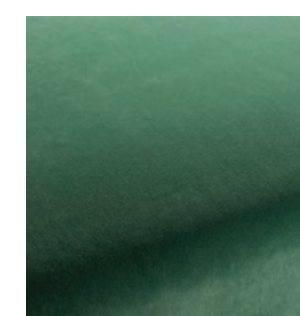
CA7832-030



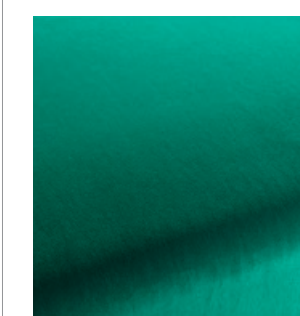
CA7832-031



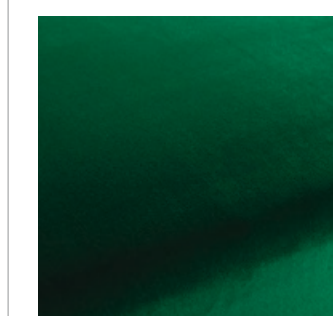
CA7832-032



CA7832-033



CA7832-034

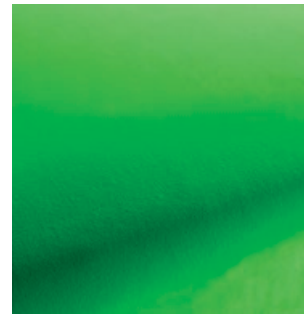


CA7832-035

# City Velvet

Textile

Price category 1  
Manufacturer JAB  
Materials 100% Polyester  
Martindale 100.000  
Lightfastness 3-5  
Pilling 4-5



CA7832-036



CA7832-037



CA7832-038



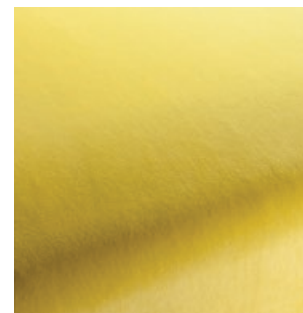
CA7832-039



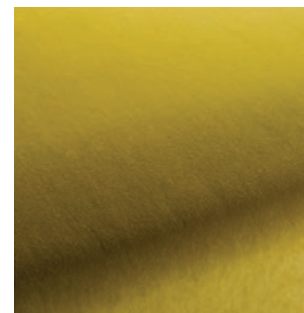
CA7832-040



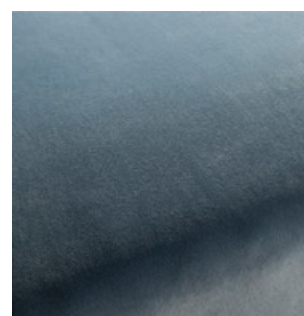
CA7832-041



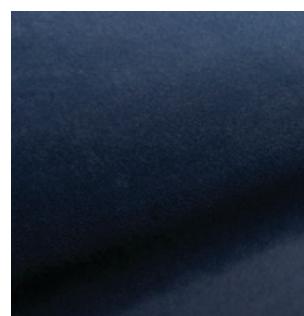
CA7832-042



CA7832-043



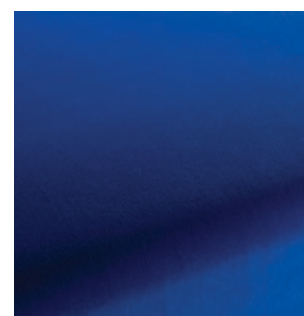
CA7832-050



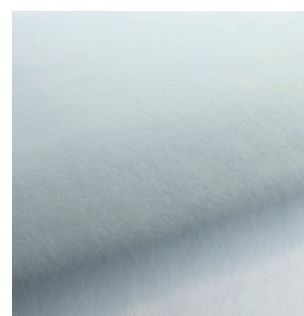
CA7832-051



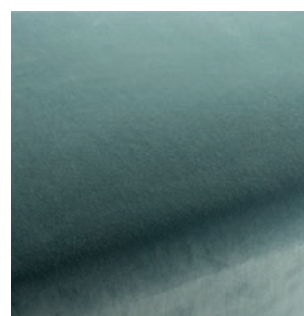
CA7832-052



CA7832-053



CA7832-055



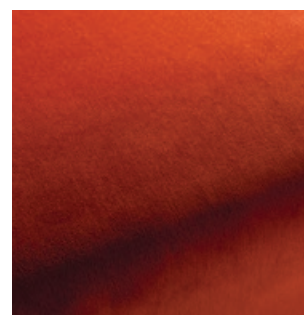
CA7832-056



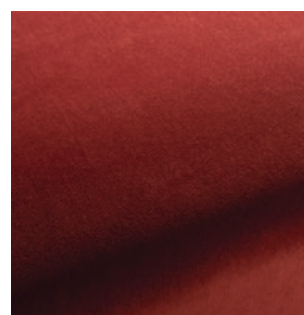
CA7832-060



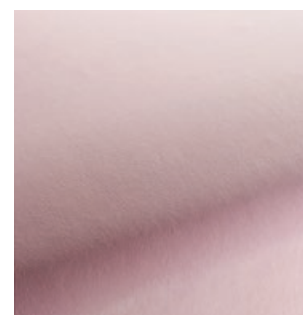
CA7832-061



CA7832-062



CA7832-063



CA7832-064

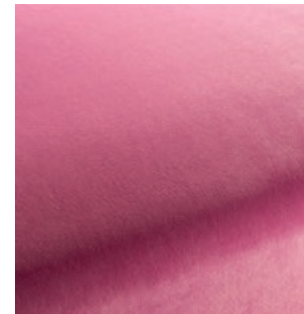


CA7832-065

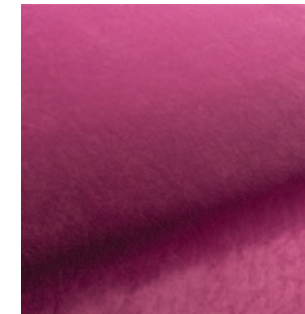
# City Velvet

Textile

Price category 1  
Manufacturer JAB  
Materials 100% Polyester  
Martindale 100.000  
Lightfastness 3-5  
Pilling 4-5



CA7832-066



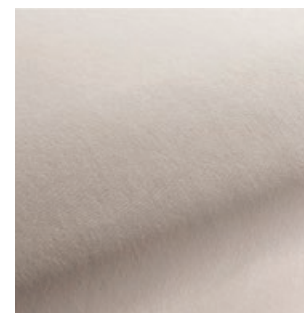
CA7832-067



CA7832-068



CA7832-069



CA7832-070



CA7832-071



CA7832-072



CA7832-073



CA7832-074



CA7832-075



CA7832-076



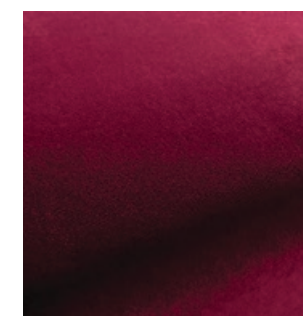
CA7832-077



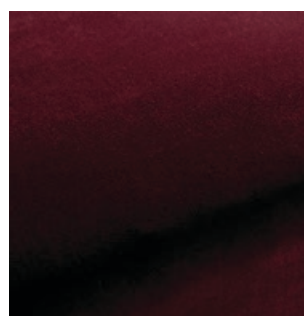
CA7832-078



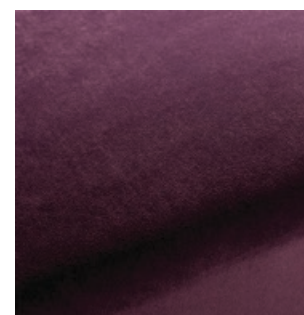
CA7832-079



CA7832-080



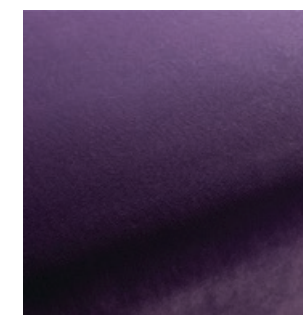
CA7832-081



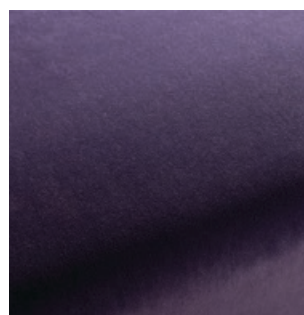
CA7832-082



CA7832-083



CA7832-084



CA7832-085

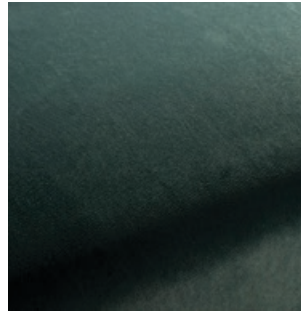
# City Velvet

Textile

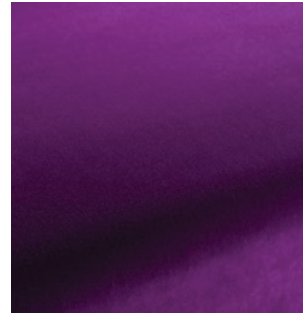
Price category 1  
Manufacturer JAB  
Materials 100% Polyester  
Martindale 100.000  
Lightfastness 3-5  
Pilling 4-5



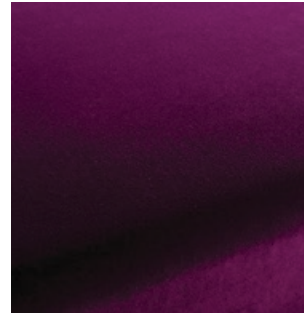
CA7832-086



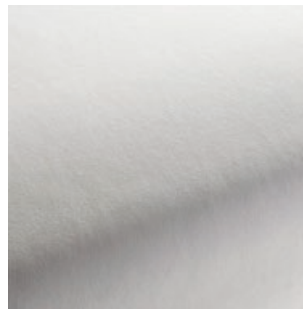
CA7832-087



CA7832-088



CA7832-089



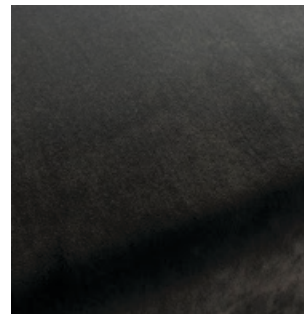
CA7832-090



CA7832-091



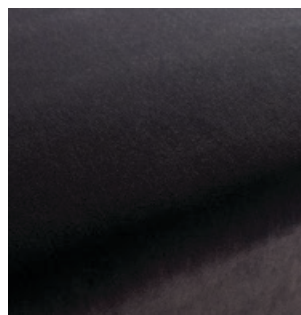
CA7832-092



CA7832-093



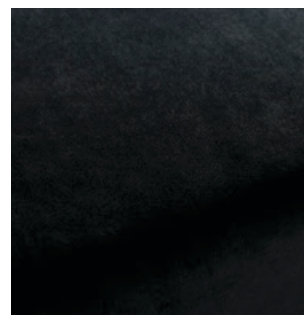
CA7832-094



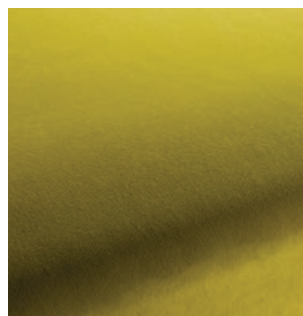
CA7832-095



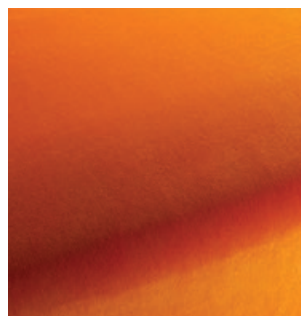
CA7832-096



CA7832-099



CA7832-130



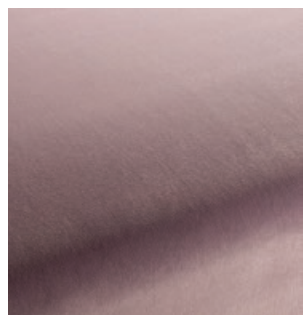
CA7832-160



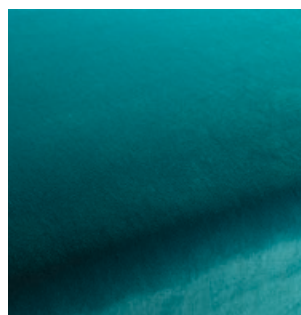
CA7832-161



CA7832-170



CA7832-180



CA7832-181

# Hot Madison Reboot

Textile

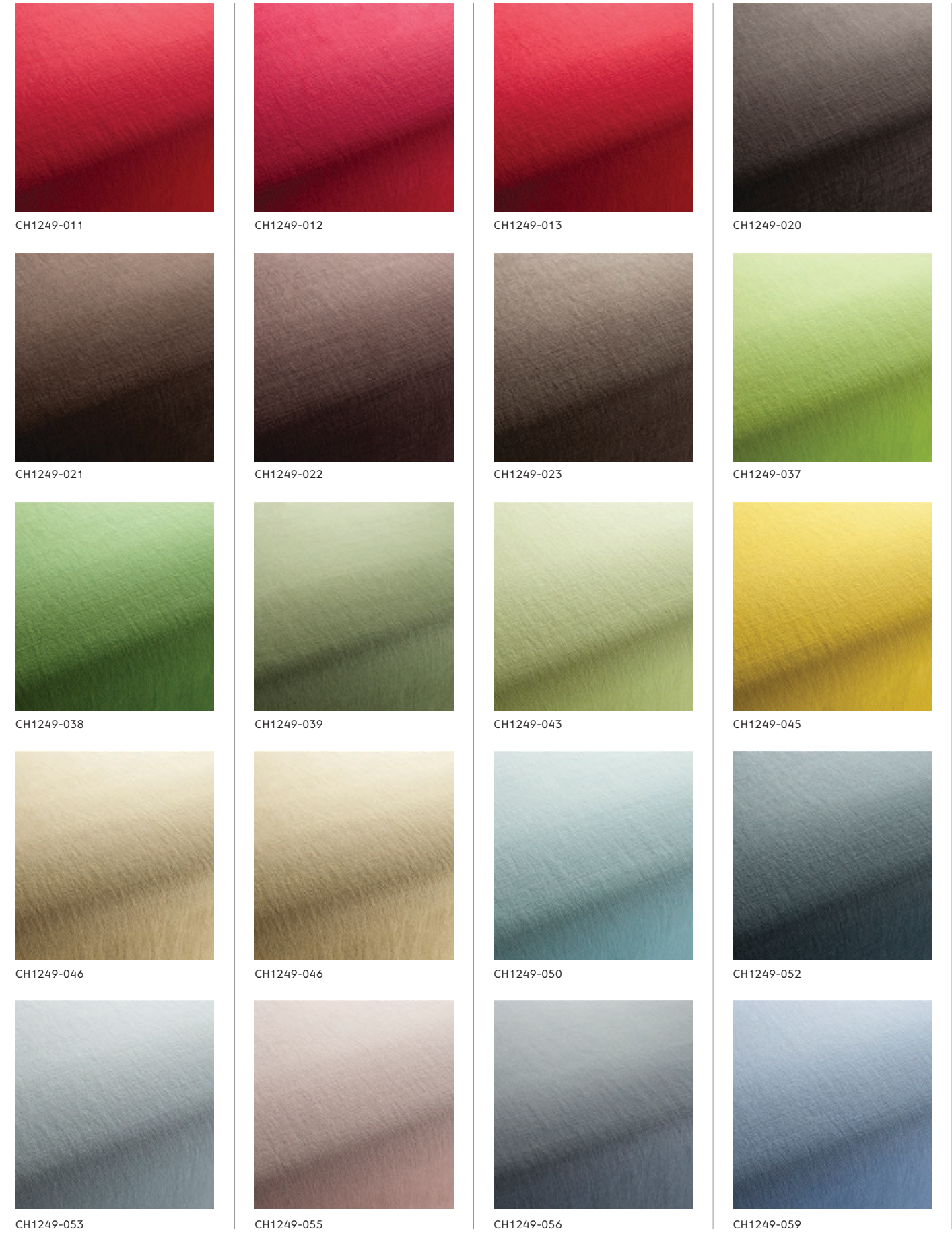
Price category 1  
Manufacturer JAB  
Materials 63% Cotton, 37% Linen  
Martindale 55.000  
Lightfastness 4-5  
Pilling 4-5



# Hot Madison Reboot

Textile

Price category 1  
Manufacturer JAB  
Materials 63% Cotton, 37% Linen  
Martindale 55.000  
Lightfastness 4-5  
Pilling 4-5



# Hot Madison Reboot

Textile

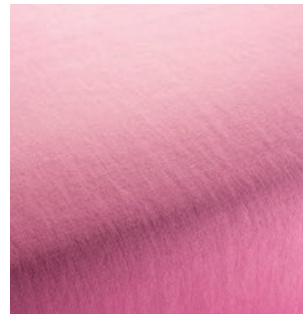
Price category 1  
Manufacturer JAB  
Materials 63% Cotton, 37% Linen  
Martindale 55.000  
Lightfastness 4-5  
Pilling 4-5



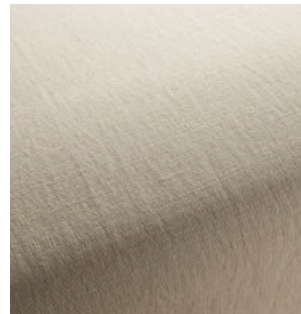
CH1249-062



CH1249-063



CH1249-064



CH1249-070



CH1249-071



CH1249-072



CH1249-073



CH1249-074



CH1249-075



CH1249-076



CH1249-077



CH1249-078



CH1249-079



CH1249-080



CH1249-081



CH1249-082



CH1249-083



CH1249-084



CH1249-085



CH1249-086

# Hot Madison Reboot

Textile

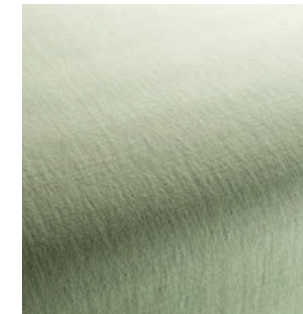
Price category 1  
Manufacturer JAB  
Materials 63% Cotton, 37% Linen  
Martindale 55.000  
Lightfastness 4-5  
Pilling 4-5



CH1249-087



CH1249-088



CH1249-089



CH1249-091



CH1249-092



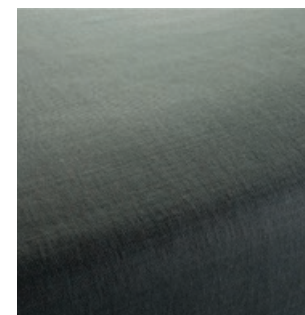
CH1249-093



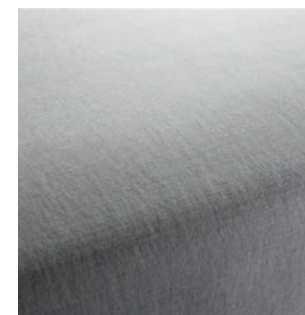
CH1249-094



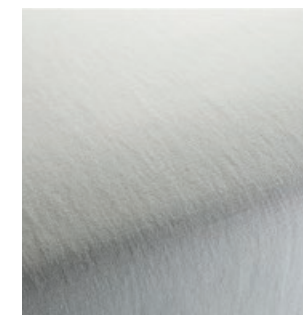
CH1249-095



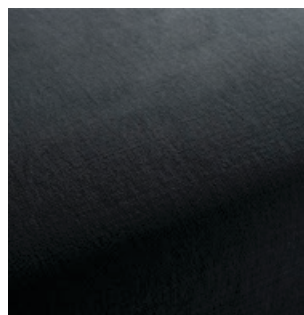
CH1249-096



CH1249-097



CH1249-098



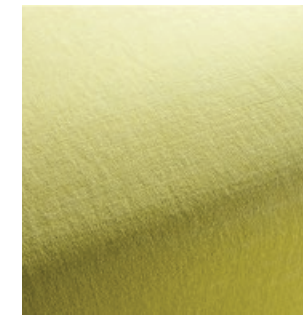
CH1249-099



CH1249-126



CH1249-127



CH1249-130



CH1249-131



CH1249-133



CH1249-134



CH1249-135



CH1249-139

# Hot Madison Reboot

Textile

Price category 1  
Manufacturer JAB  
Materials 63% Cotton, 37% Linen  
Martindale 55.000  
Lightfastness 4-5  
Pilling 4-5



CH1249-155



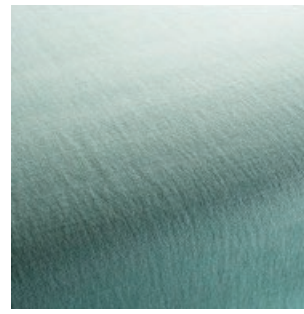
CH1249-170



CH1249-171



CH1249-172



CH1249-180



CH1249-181



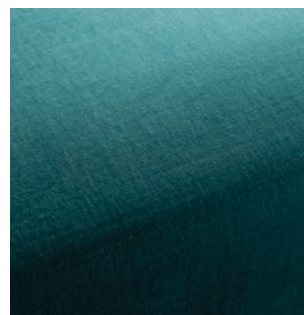
CH1249-182



CH1249-183



CH1249-184



CH1249-185



CH1249-186



CH1249-191



CH1249-192



CH1249-193



CH1249-194



CH1249-195



CH1249-196



CH1249-197



CH1249-230

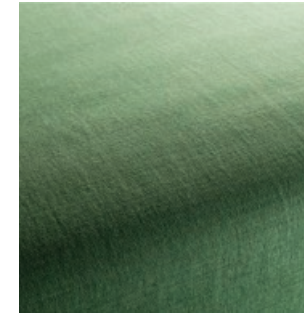


CH1249-231

# Hot Madison Reboot

Textile

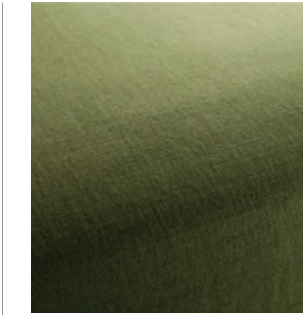
Price category 1  
Manufacturer JAB  
Materials 63% Cotton, 37% Linen  
Martindale 55.000  
Lightfastness 4-5  
Pilling 4-5



CH1249-232



CH1249-233



CH1249-234



CH1249-245



CH1249-248



CH1249-404



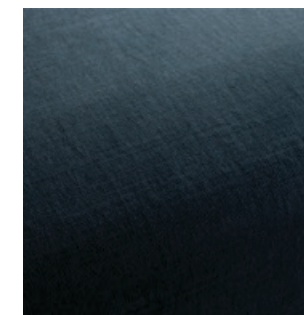
CH1249-410



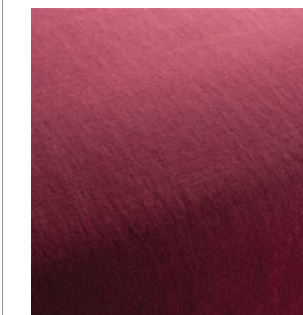
CH1249-419



CH1249-420



CH1249-424



CH1249-459



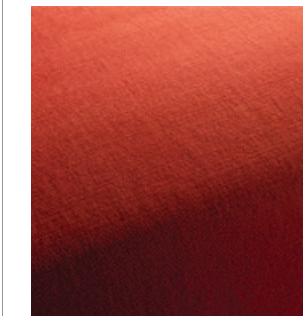
CH1249-469



CH1249-471



CH1249-476



CH1249-490



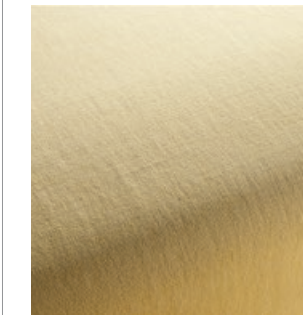
CH1249-495



CH1249-497



CH1249-499



CH1249-509



CH1249-517

# Hot Madison Reboot

Textile

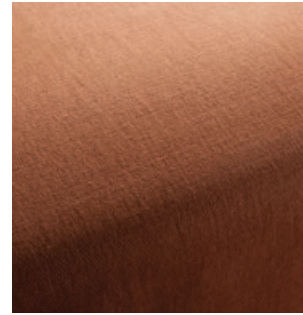
Price category 1  
Manufacturer JAB  
Materials 63% Cotton, 37% Linen  
Martindale 55.000  
Lightfastness 4-5  
Pilling 4-5



CH1249-521



CH1249-524



CH1249-525



CH1249-528



CH1249-694-



CH1249-695



CH1249-696



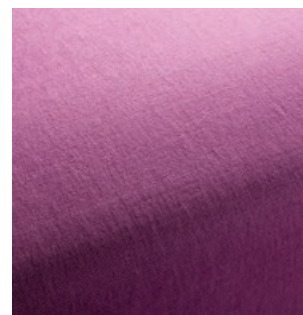
CH1249-697



CH1249-698



CH1249-699



CH1249-700



CH1249-701



CH1249-702



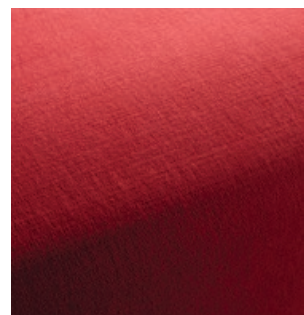
CH1249-703



CH1249-704



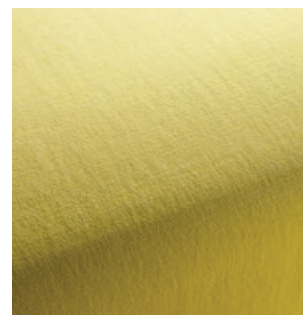
CH1249-705



CH1249-706



CH1249-707



CH1249-708

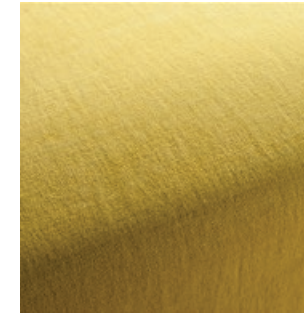


CH1249-709

# Hot Madison Reboot

Textile

Price category 1  
Manufacturer JAB  
Materials 63% Cotton, 37% Linen  
Martindale 55.000  
Lightfastness 4-5  
Pilling 4-5



CH1249-710



CH1249-711



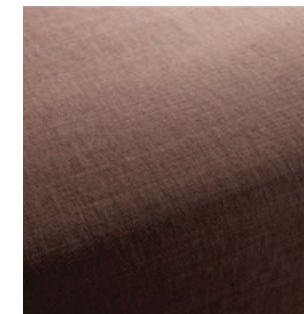
CH1249-712



CH1249-713



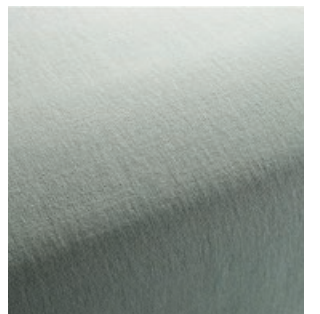
CH1249-714



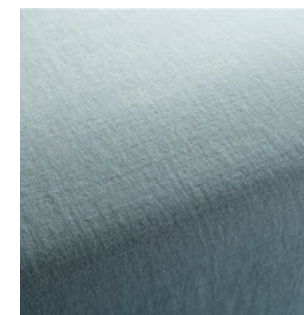
CH1249-715



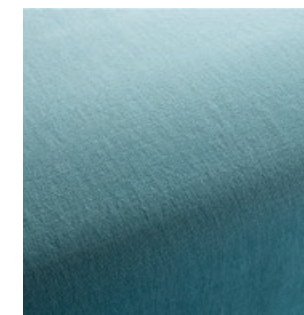
CH1249-716



CH1249-717



CH1249-718



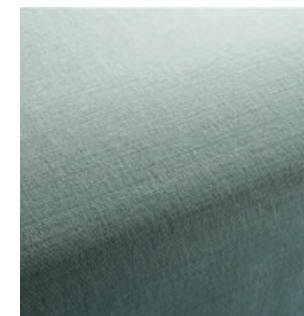
CH1249-719



CH1249-720



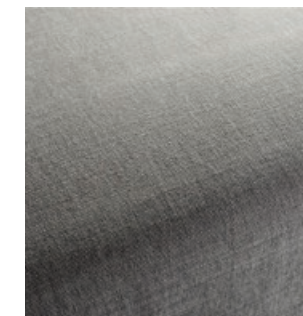
CH1249-721



CH1249-722



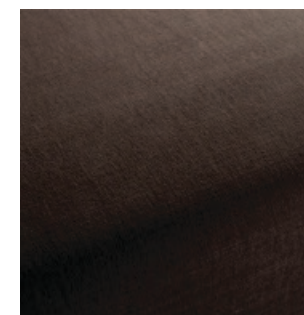
CH1249-723



CH1249-724



CH1249-725



CH1249-884



CH1249-893



CH1249-894

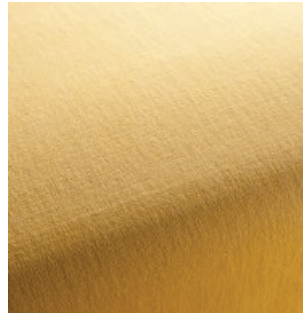


CH1249-896

# Hot Madison Reboot

Textile

Price category 1  
Manufacturer JAB  
Materials 63% Cotton, 37% Linen  
Martindale 55.000  
Lightfastness 4-5  
Pilling 4-5



CH1249-897



CH1249-898



CH1249-934



CH1249-987



CH1249-988



CH1249-989



CH1249-990



CH1249-991



CH1249-992



CH1249-993



CH1249-994



# Maple

Textile

Price category 1  
Manufacturer Kvadrat  
Materials 81% Viscose, 15% Linen,  
4% Non-woven Polyester backing  
Martindale 30.000  
Lightfastness 5-7  
Pilling 5



# Maple

Textile

Price category 1  
Manufacturer Kvadrat  
Materials 81% Viscose, 15% Linen,  
4% Non-woven Polyester backing  
Martindale 30.000  
Lightfastness 5-7  
Pilling 5



# Maple

Textile

Price category 1  
Manufacturer Kvadrat  
Materials 81% Viscose, 15% Linen,  
4% Non-woven Polyester backing  
Martindale 30.000  
Lightfastness 5-7  
Pilling 5



0732



0742



0762



0792



0832



0862

# Remix 3

Textile

Price category 1  
Manufacturer Kvadrat  
Materials 90% New wool, 10% Nylon  
Martindale 100.000  
Lightfastness 5-7  
Pilling 4



# Remix 3

Textile

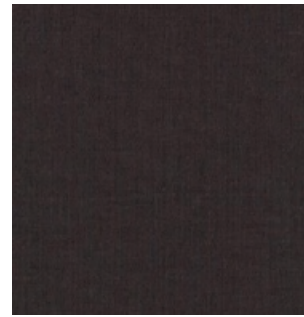
Price category 1  
Manufacturer Kvadrat  
Materials 90% New wool, 10% Nylon  
Martindale 100.000  
Lightfastness 5-7  
Pilling 4



# Remix 3

Textile

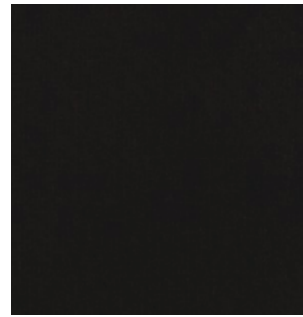
Price category 1  
Manufacturer Kvadrat  
Materials 90% New wool, 10% Nylon  
Martindale 100.000  
Lightfastness 5-7  
Pilling 4



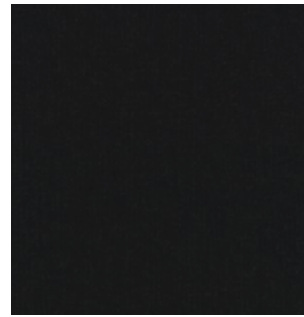
0356



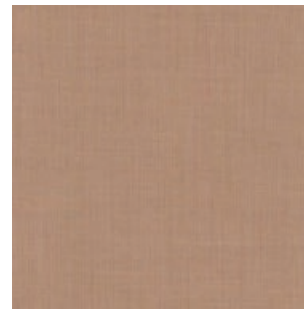
0362



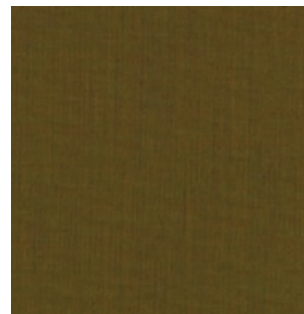
0373



0383



0406



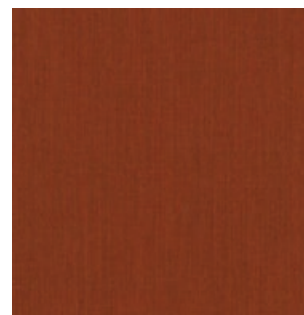
0412



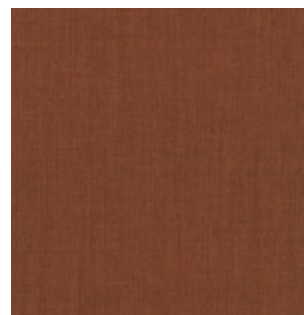
0422



0433



0443



0452



0516



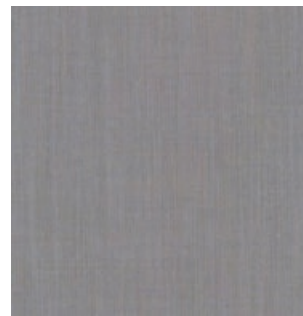
0536



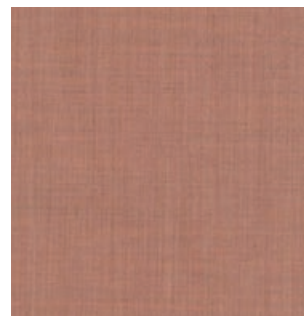
0543



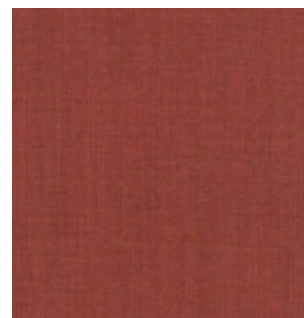
0566



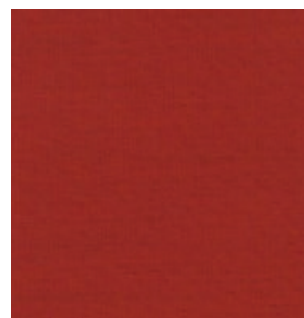
0606



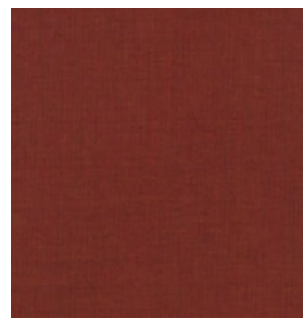
0612



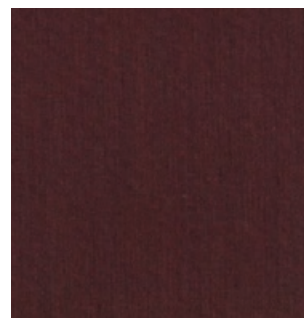
0632



0643



0653

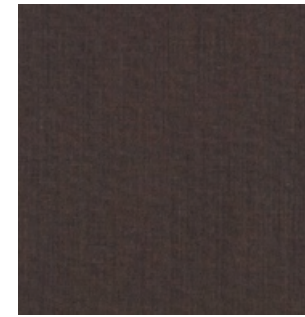


0662

# Remix 3

Textile

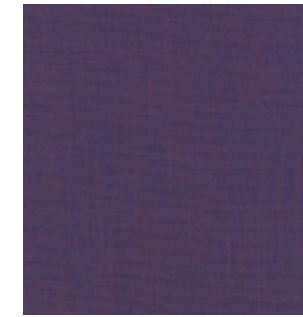
Price category 1  
Manufacturer Kvadrat  
Materials 90% New wool, 10% Nylon  
Martindale 100.000  
Lightfastness 5-7  
Pilling 4



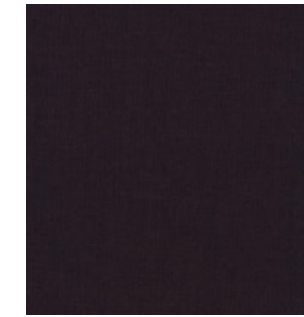
0672



0682



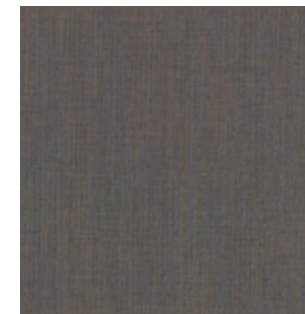
0686



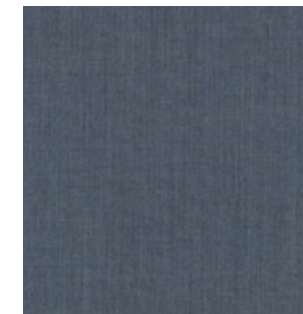
0692



0716



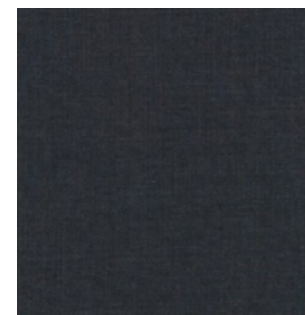
0722



0733



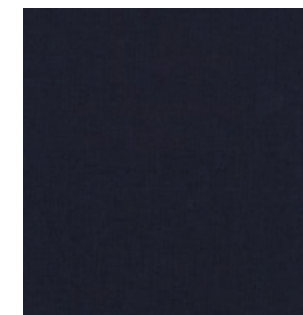
0743



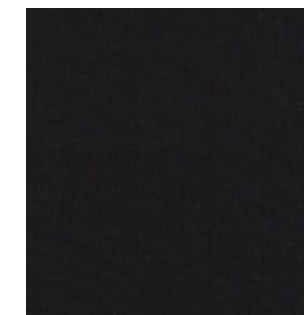
0753



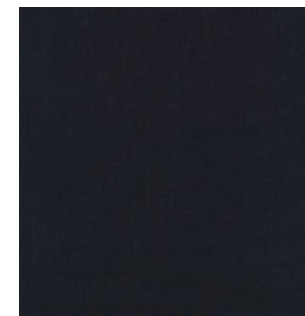
0762



0773



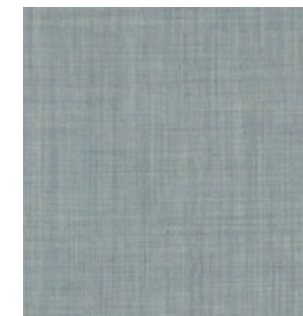
0783



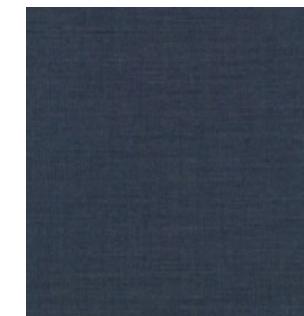
0796



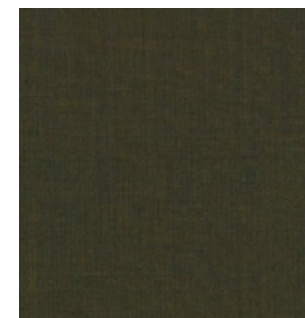
0816



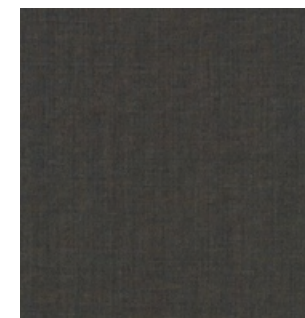
0823



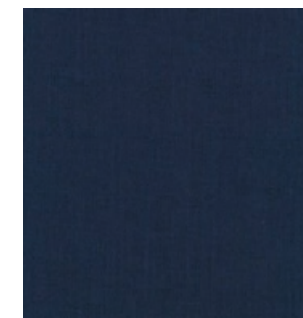
0836



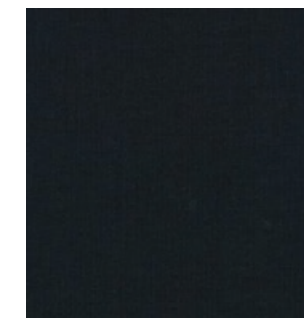
0842



0852



0866



0873

# Remix 3

Textile

Price category 1  
Manufacturer Kvadrat  
Materials 90% New wool, 10% Nylon  
Martindale 100.000  
Lightfastness 5-7  
Pilling 4



0906



0912



0923



0933



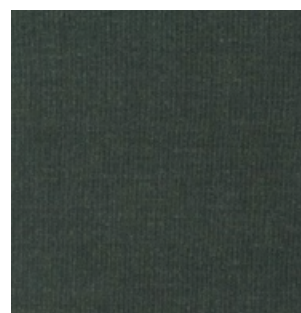
0942



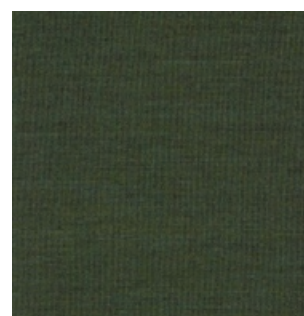
0954



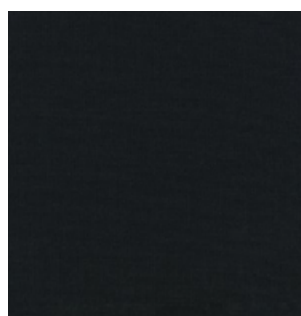
0962



0973



0982



0996

# Re-Wool

Textile

Price category 1  
Manufacturer Kvadrat  
Materials 45% new wool worsted 45% recycled wool 10% nylon  
Martindale 100.000  
Lightfastness 5-7 (ISO 1-8)  
Pilling 4 (ISO 1-5)



# Re-Wool

Textile

Price category 1  
Manufacturer Kvadrat  
Materials 45% new wool worsted 45% recycled wool 10% nylon  
Martindale 100.000  
Lightfastness 5-7 (ISO 1-8)  
Pilling 4 (ISO 1-5)



# Re-Wool

Textile



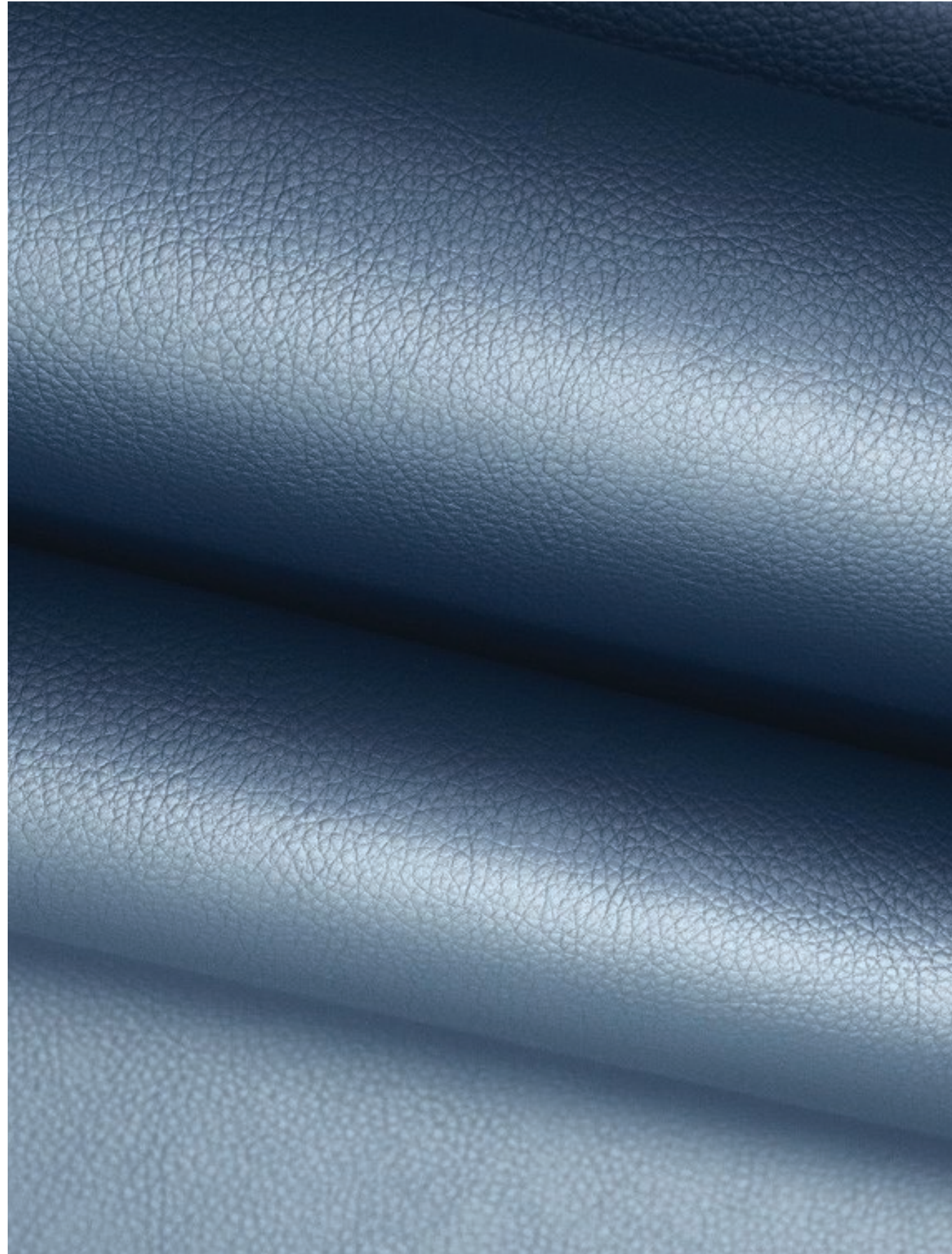
0868

**Price category 1**  
**Manufacturer** Kvadrat  
**Materials** 45% new wool worsted 45% recycled  
wool 10% nylon  
**Martindale** 100.000  
**Lighfastness** 5-7 (ISO 1-8)  
**Pilling** 4 (ISO 1-5)

# Illusion

Artificial leather

Price category 1  
Manufacturer Nevotex  
Materials Artificial leather  
Thickness 1 mm



\*Please note Instill is an artificial leather

# Illusion

Artificial leather

Price category 1  
Manufacturer Nevotex  
Materials Artificial leather  
Thickness 1 mm

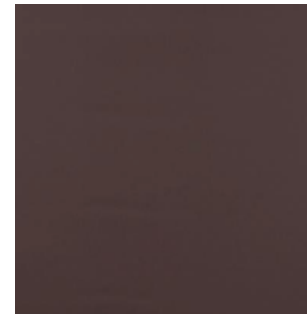




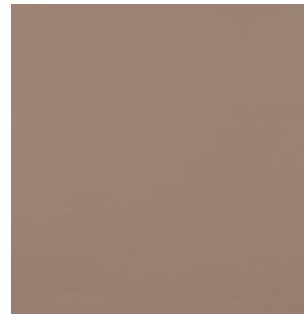
# Illusion

Artificial leather

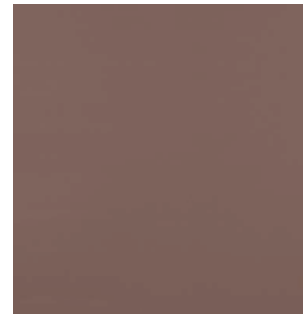
Price category 1  
Manufacturer Nevotex  
Materials Artificial leather  
Thickness 1 mm



48013



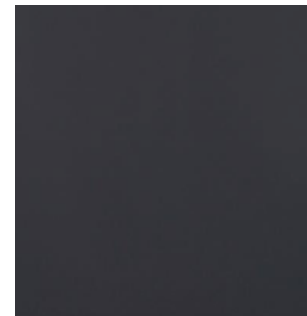
46508



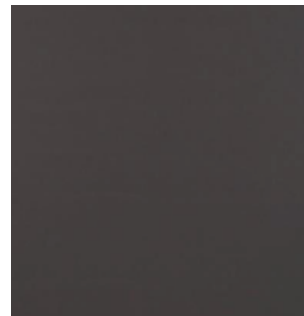
47124



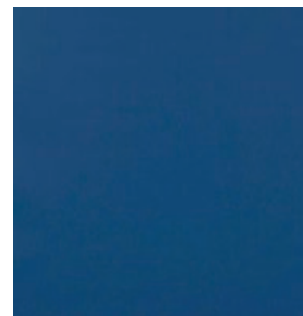
67403



68523



58290



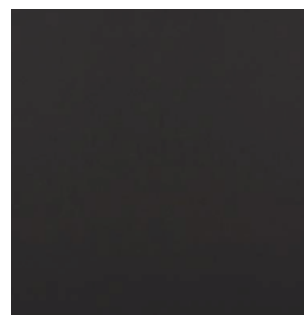
68746



65066



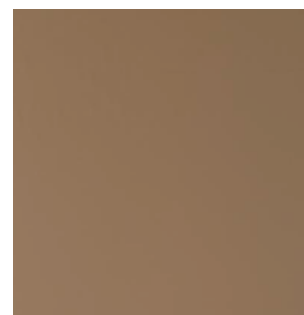
67382



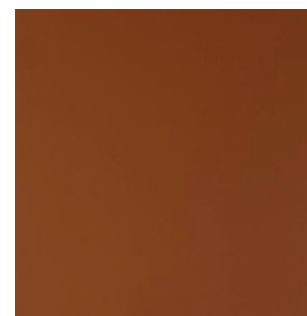
00110



83430



85020



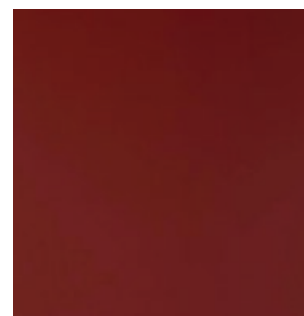
44388



36850



23660



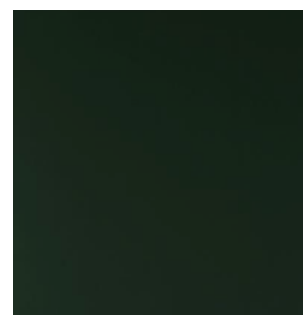
28040



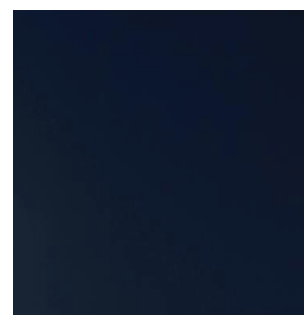
75566



76725



77773

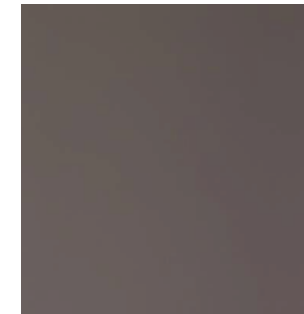


66745

# Illusion

Artificial leather

Price category 1  
Manufacturer Nevotex  
Materials Artificial leather  
Thickness 1 mm



47069

2

*Textile Category 2*

# Canvas 2

Textile

Price category 2  
Manufacturer Kvadrat  
Materials 90% New wool, 10% Nylon  
Martindale 100.000  
Lightfastness 5-7  
Pilling 4-5



# Canvas 2

Textile

Price category 2  
Manufacturer Kvadrat  
Materials 90% New wool, 10% Nylon  
Martindale 100.000  
Lightfastness 5-7  
Pilling 4-5



# Canvas 2

Textile

Price category 2  
Manufacturer Kvadrat  
Materials 90% New wool, 10% Nylon  
Martindale 100.000  
Lightfastness 5-7  
Pilling 4-5



576



614



644



654



666



674



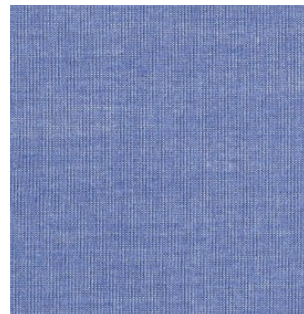
684



694



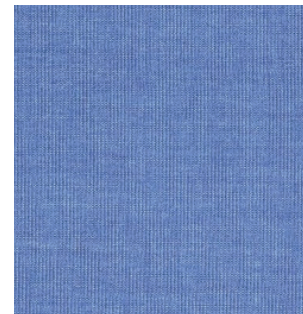
716



726



734



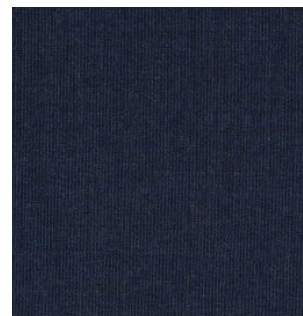
746



764



786



794



836



854



926



936



946

# Canvas 2

Textile

Price category 2  
Manufacturer Kvadrat  
Materials 90% New wool, 10% Nylon  
Martindale 100.000  
Lightfastness 5-7  
Pilling 4-5



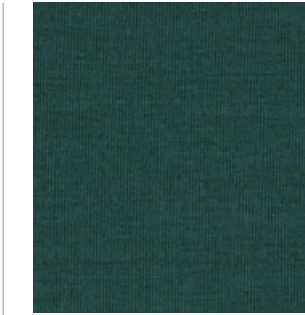
954



964



974



984



996

# Clay

Textile

Price category 2  
Manufacturer Sahco  
Materials 76% Linen, 21% Cotton,  
3% Polyester  
Martindale 45.000  
Lightfastness 4-6  
Pilling 4



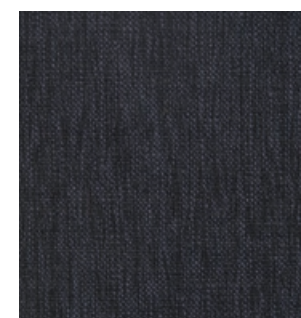
# Clay

Textile

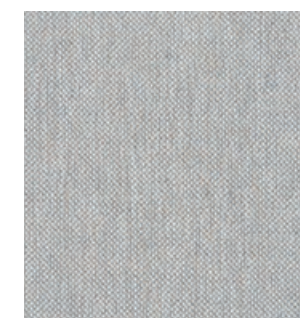
Price category 2  
Manufacturer Sahco  
Materials 76% Linen, 21% Cotton,  
3% Polyester  
Martindale 45.000  
Lightfastness 4-6  
Pilling 4



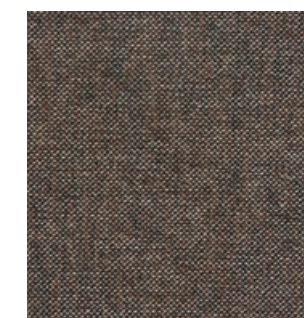
0001



0002



0003



0004



0005



0006



0007



0008



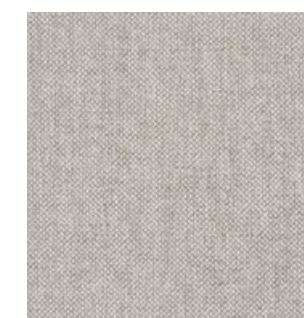
0009



0010



0011



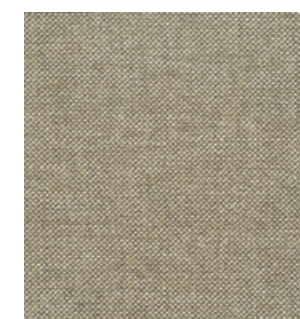
0012



0013



0014



0015



0016



0017

# Colline 2

Textile

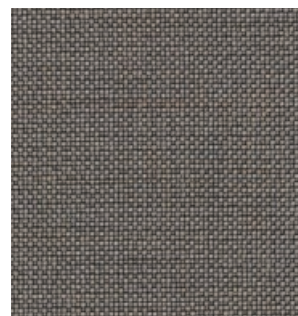
Price category 2  
Manufacturer Kvadrat  
Materials 75% wool, 17% Acrylic,  
8% Nylon  
Martindale 100.000  
Lightfastness 6  
Pilling 4-5



# Colline 2

Textile

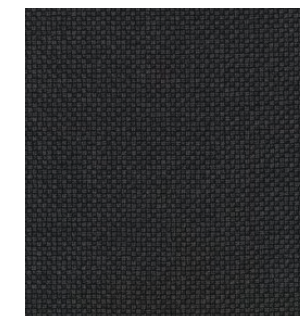
Price category 2  
Manufacturer Kvadrat  
Materials 75% wool, 17% Acrylic,  
8% Nylon  
Martindale 100.000  
Lightfastness 6  
Pilling 4-5



0127



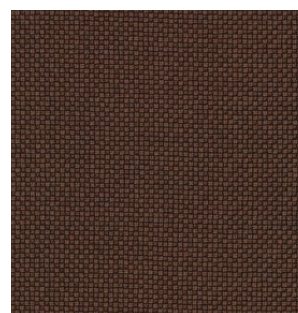
0147



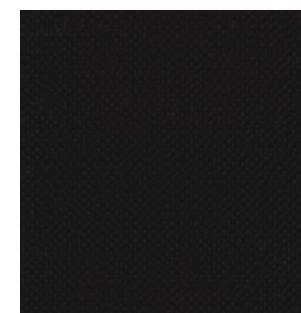
0177



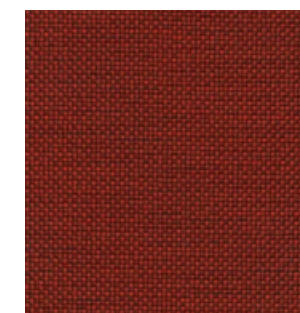
0227



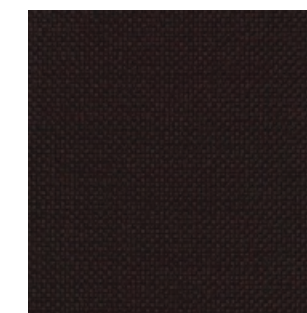
0347



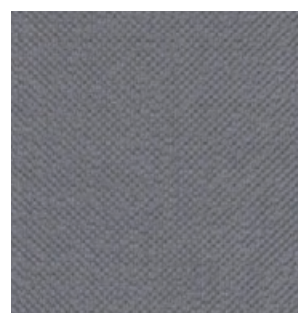
0397



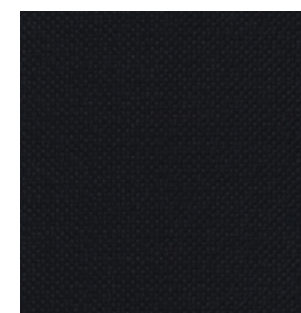
0657



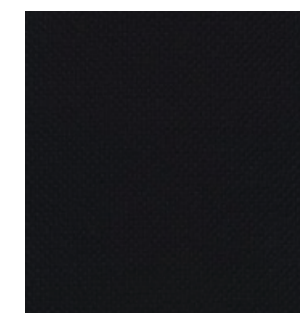
0677



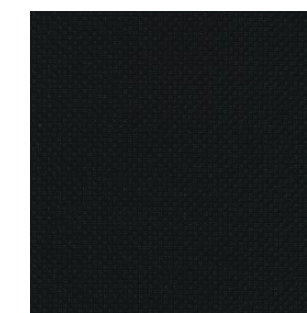
0737



0787



0797

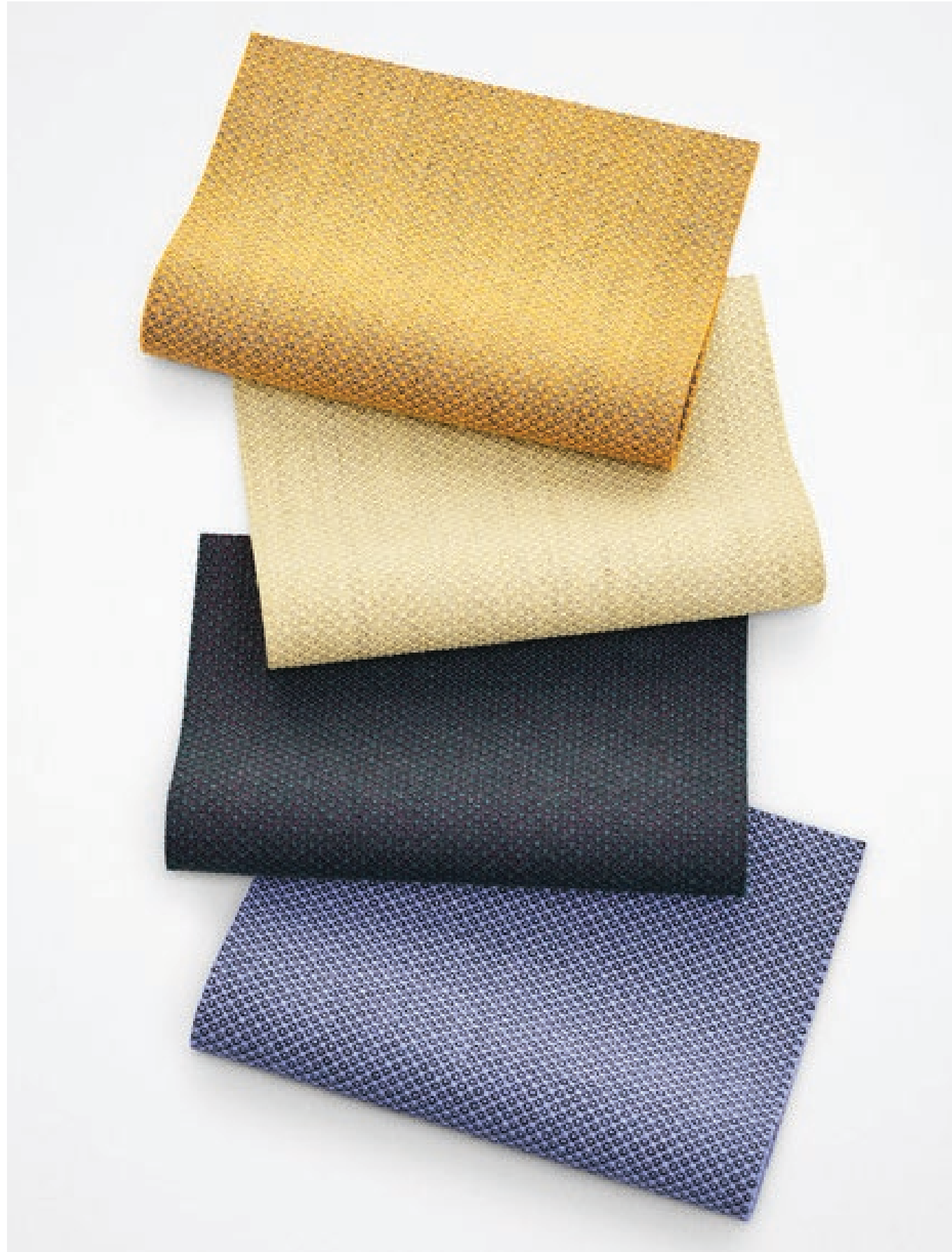


0987

# Fiord 2

Textile

Price category 2  
Manufacturer Kvadrat  
Materials 92% New wool, 8% Nylon  
Martindale 60.000  
Lightfastness 6  
Pilling 4-5



# Fiord 2

Textile

Price category 2  
Manufacturer Kvadrat  
Materials 92% New wool, 8% Nylon  
Martindale 60.000  
Lightfastness 6  
Pilling 4-5



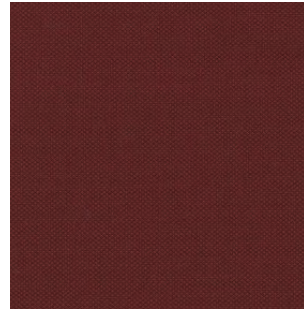
# Fiord 2

Textile

Price category 2  
Manufacturer Kvadrat  
Materials 92% New wool, 8% Nylon  
Martindale 60.000  
Lightfastness 6  
Pilling 4-5



571



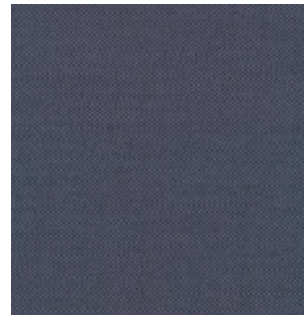
581



591



642



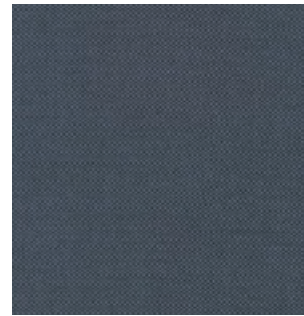
672



721



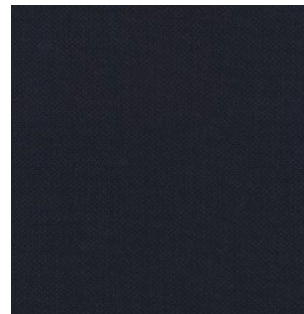
751



762



771



782



791



821



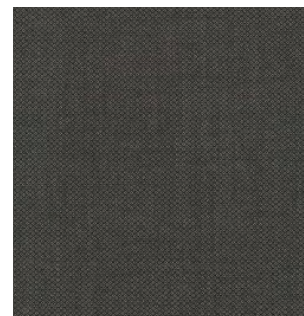
862



951



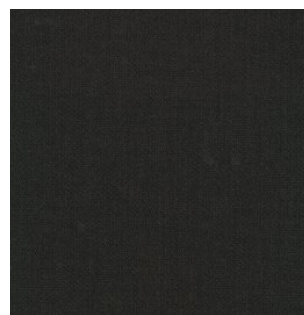
961



971



981



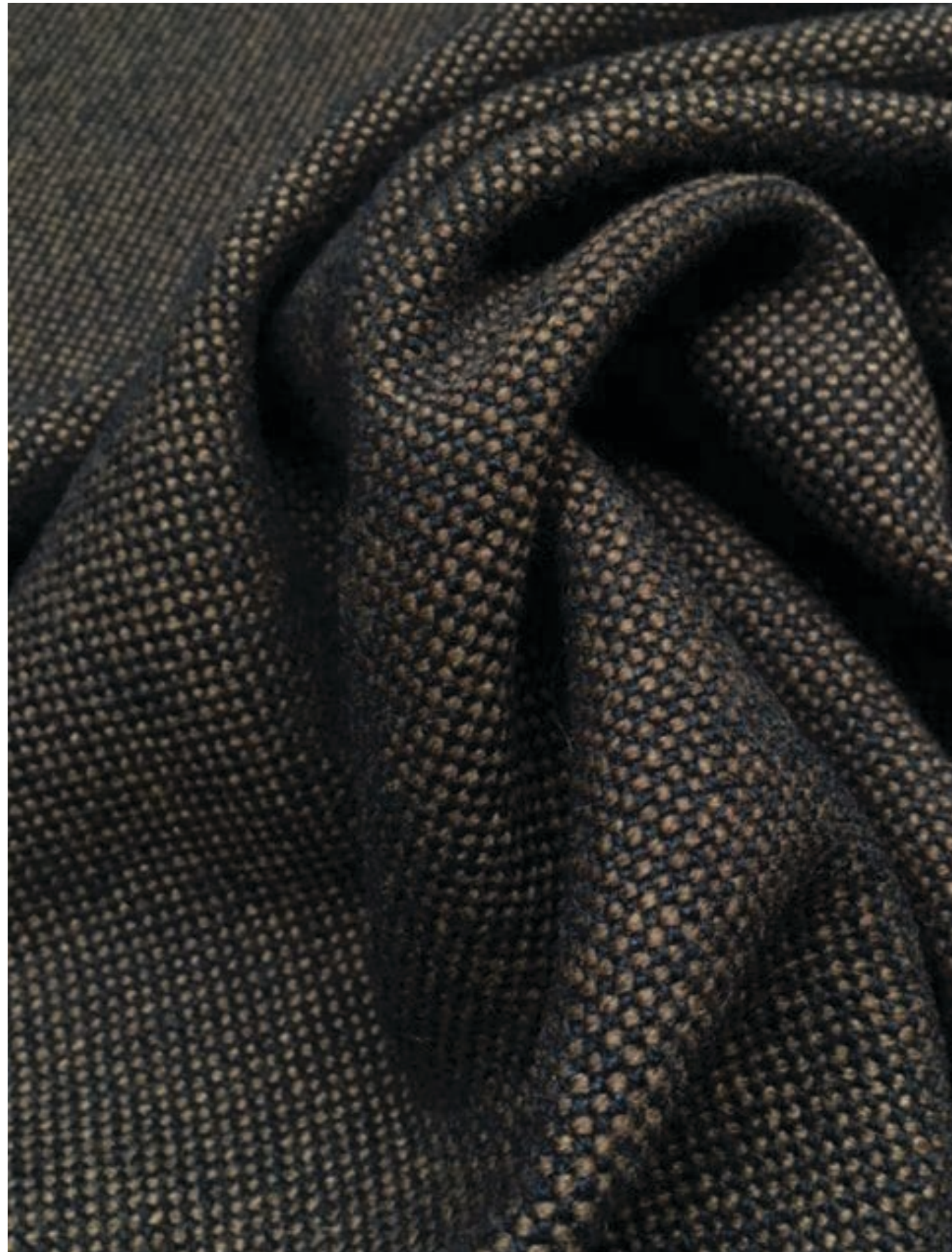
991



# Hallingdal 65

Textile

Price category 2  
Manufacturer Kvadrat  
Materials 70% New wool, 30% Viscose  
Martindale 100.000  
Lightfastness 5-7  
Pilling 3-4



# Hallingdal 65

Textile

Price category 2  
Manufacturer Kvadrat  
Materials 70% New wool, 30% Viscose  
Martindale 100.000  
Lightfastness 5-7  
Pilling 3-4



# Hallingdal 65

Textile

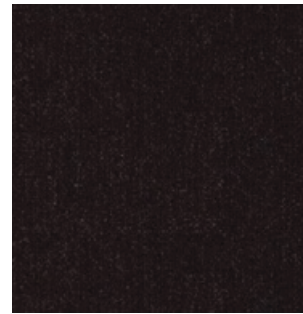
Price category 2  
Manufacturer Kvadrat  
Materials 70% New wool, 30% Viscose  
Martindale 100.000  
Lightfastness 5-7  
Pilling 3-4



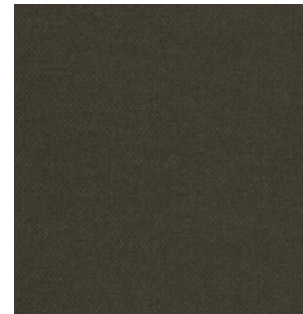
0368



0370



0376



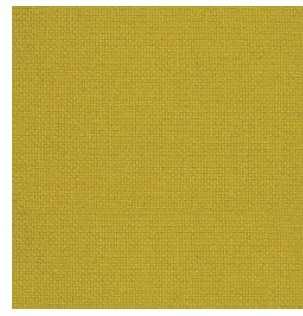
0390



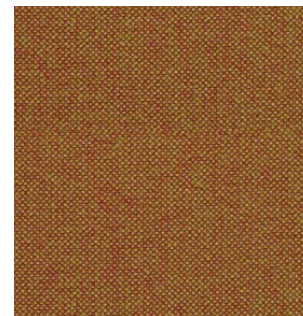
0407



0420



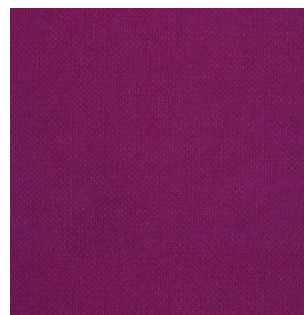
0457



0526



0547



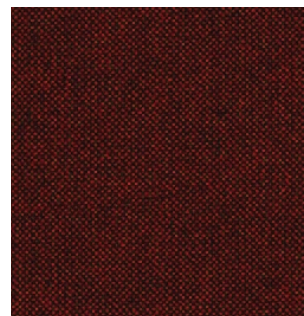
0563



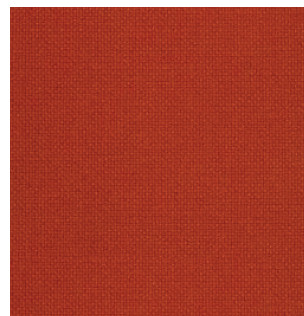
0573



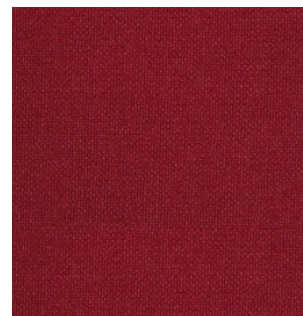
0590



0596



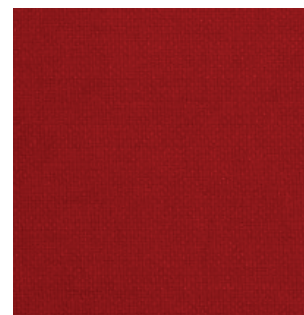
0600



0657



0660



0674



0680



0687



0694

# Hallingdal 65

Textile

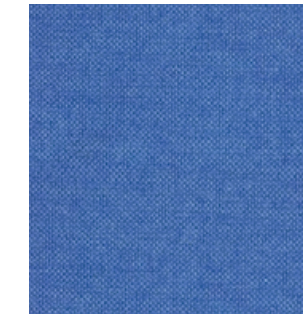
Price category 2  
Manufacturer Kvadrat  
Materials 70% New wool, 30% Viscose  
Martindale 100.000  
Lightfastness 5-7  
Pilling 3-4



0702



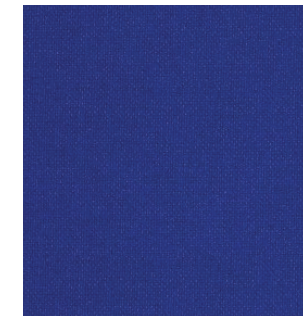
0723



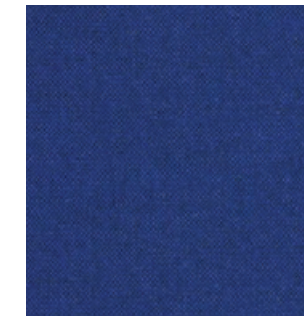
0733



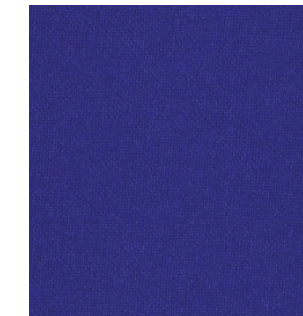
0750



0753



0754



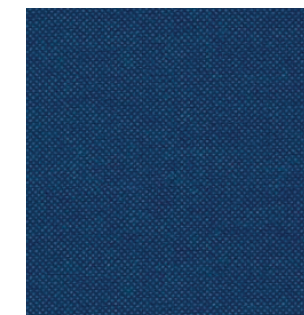
0763



0764



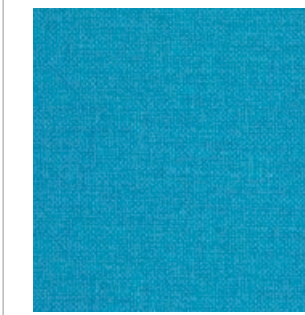
0773



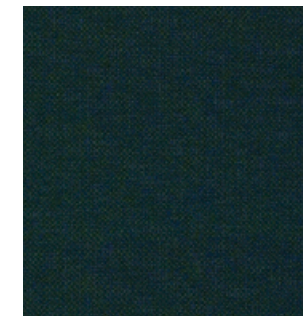
0810



0840



0850



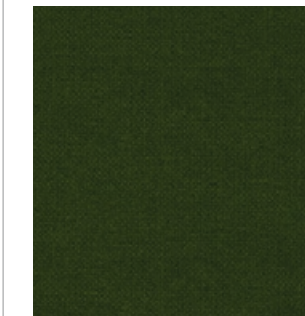
0890



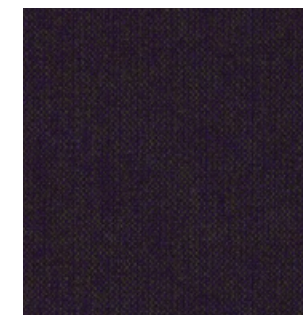
0907



0944



0960



0968



0980

# Moss

Textile

Price category 2  
Manufacturer Sahco  
Materials 52% Cotton, 22% Viscose,  
14% Acrylic, 6% Linen, 3% Polyester,  
3% Nylon  
Martindale 45.000  
Lightfastness 6-7  
Pilling 4-5



# Moss

Textile

Price category 2  
Manufacturer Sahco  
Materials 52% Cotton, 22% Viscose,  
14% Acrylic, 6% Linen, 3% Polyester,  
3% Nylon  
Martindale 45.000  
Lightfastness 6-7  
Pilling 4-5



# Moss

Textile



0021



0022

**Price category 2**  
**Manufacturer** Sahco  
**Materials** 52% Cotton, 22% Viscose,  
14% Acrylic, 6% Linen, 3% Polyester,  
3% Nylon  
**Martindale** 45.000  
**Lightfastness** 6-7  
**Pilling** 4-5

# Reflect

Textile

Price category 2  
Manufacturer Kvadrat  
Materials 100% post-consumer recycled polyester  
Martindale 100.000  
Lightfastness 6 (ISO 1-8)  
Pilling 4 (ISO 1-5)



# Reflect

Textile

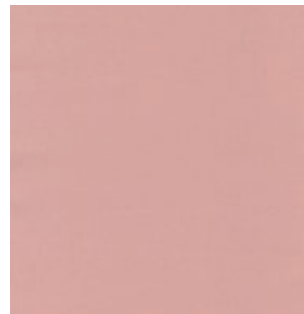
Price category 2  
Manufacturer Kvadrat  
Materials 100% post-consumer recycled polyester  
Martindale 100.000  
Lightfastness 6 (ISO 1-8)  
Pilling 4 (ISO 1-5)



# Reflect

Textile

Price category 2  
Manufacturer Kvadrat  
Materials 100% post-consumer recycled polyester  
Martindale 100.000  
Lightfastness 6 (ISO 1-8)  
Pilling 4 (ISO 1-5)



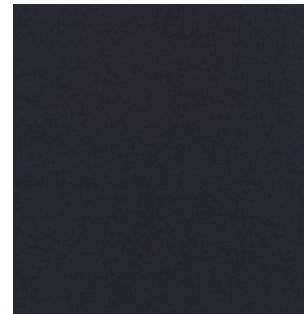
0614



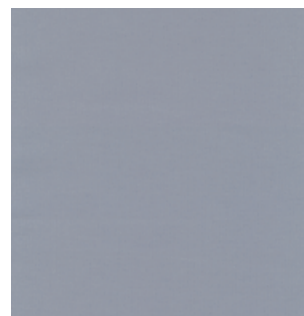
0644



0674



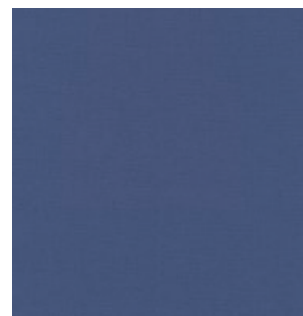
0694



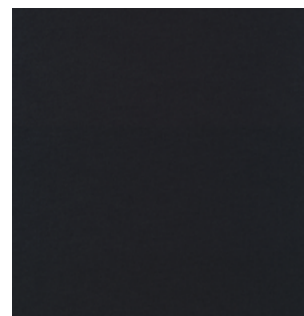
0714



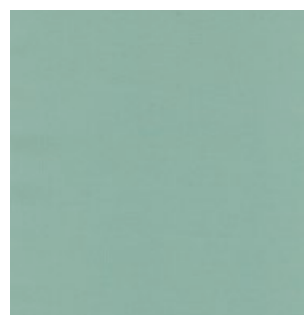
0744



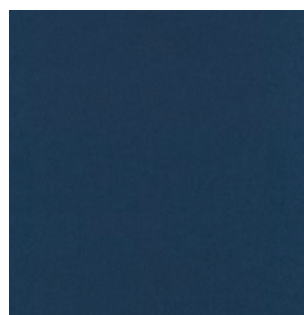
0774



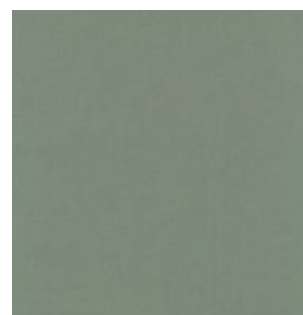
0794



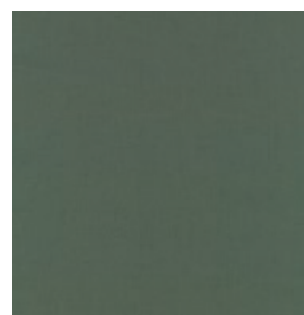
0824



0884



0924



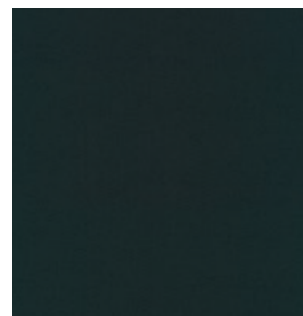
0944



0964



0984



0994

# Savanna

Textile

Price category 2  
Manufacturer Kvadrat  
Materials 34% Polyester, 31% wool,  
26% Acrylic, 4% Cotton, 3% Nylon,  
2% Linen  
Martindale 45.000  
Lightfastness 6-7  
Pilling 3



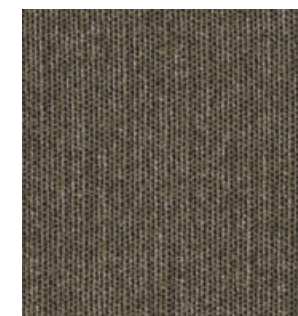
# Savanna

Textile

Price category 2  
Manufacturer Kvadrat  
Materials 34% Polyester, 31% wool,  
26% Acrylic, 4% Cotton, 3% Nylon,  
2% Linen  
Martindale 45.000  
Lightfastness 6-7  
Pilling 3



242



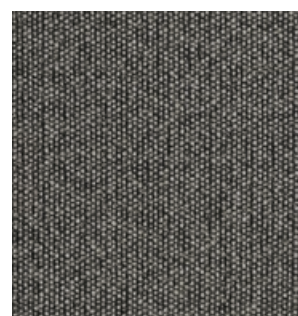
262



622



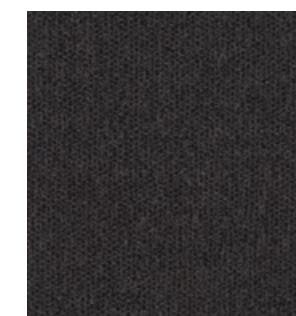
122



152



222



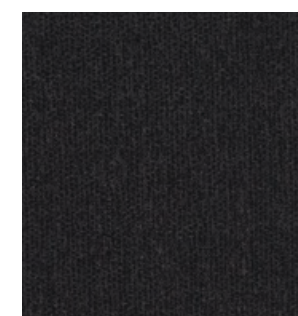
292



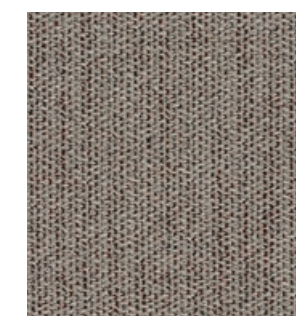
202



952



192



622

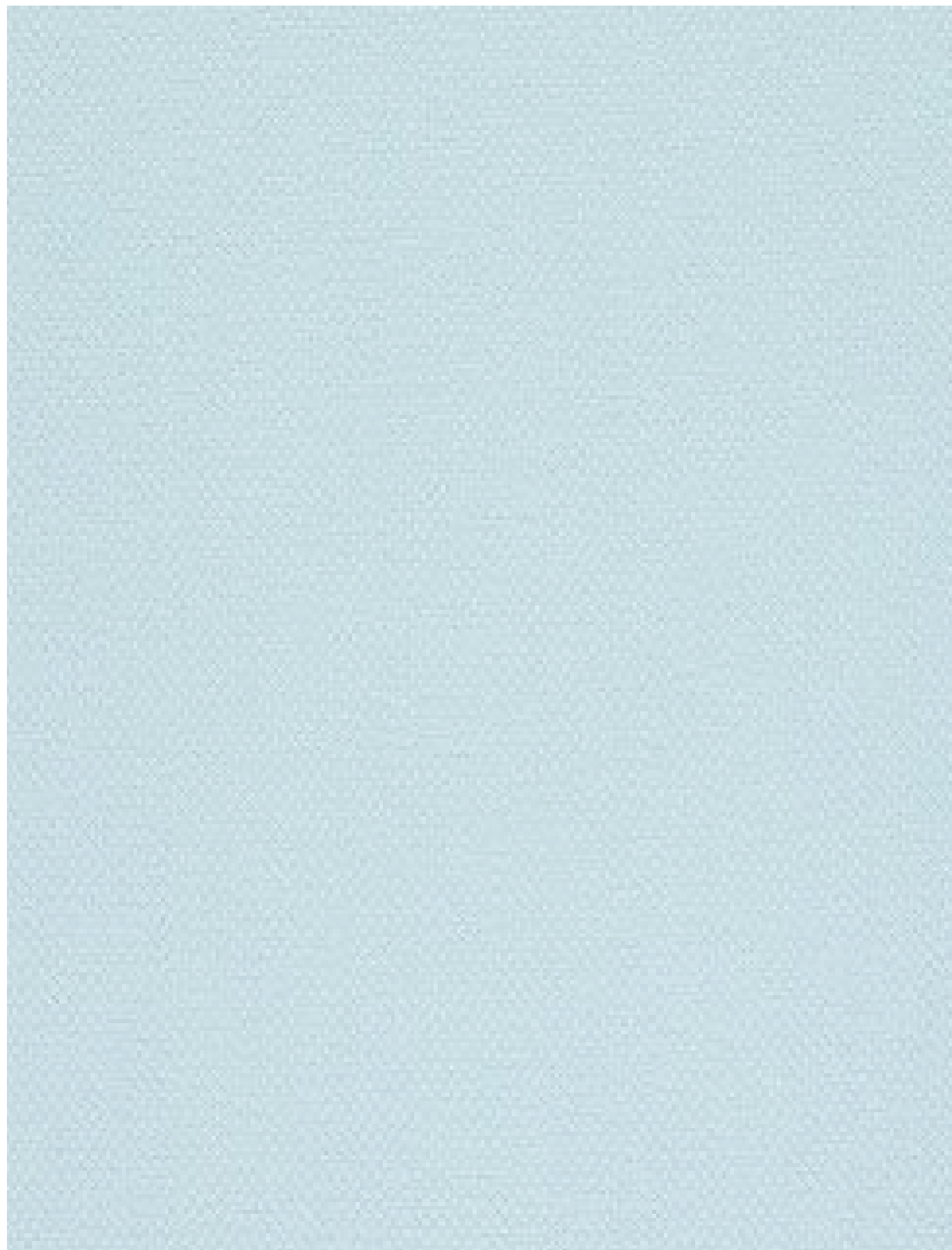


442

# Steelcut 2

Textile

Price category 2  
Manufacturer Kvadrat  
Materials 90% New wool, 10% Nylon  
Martindale 100.000  
Lightfastness 5-7  
Pilling 3-4



# Steelcut 2

Textile

Price category 2  
Manufacturer Kvadrat  
Materials 90% New wool, 10% Nylon  
Martindale 100.000  
Lightfastness 5-7  
Pilling 3-4





# Steelcut 2

Textile

Price category 2  
Manufacturer Kvadrat  
Materials 90% New wool, 10% Nylon  
Martindale 100.000  
Lightfastness 5-7  
Pilling 3-4



605



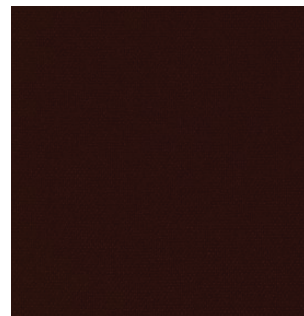
615



625



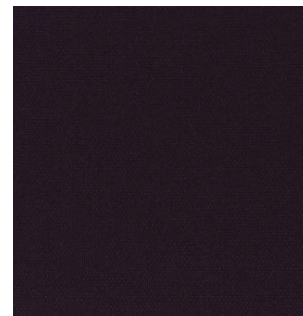
635



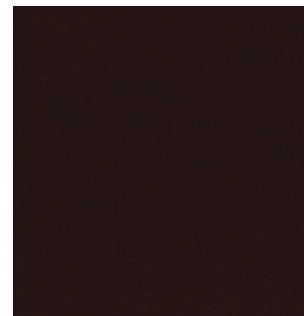
655



660



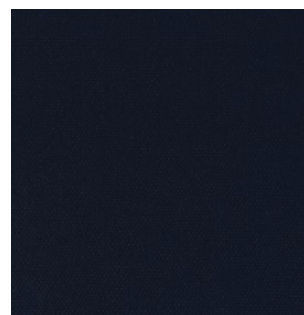
685



695



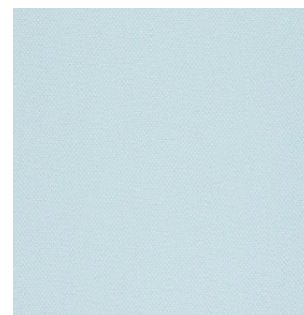
760



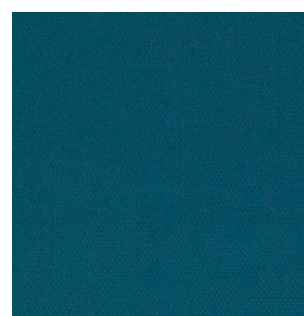
775



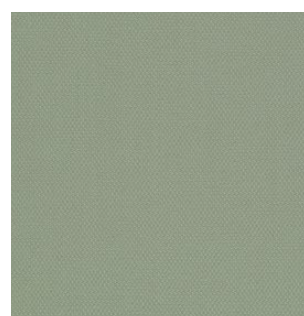
780



820



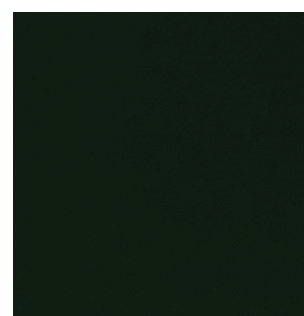
835



935



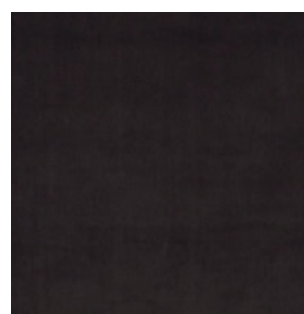
950



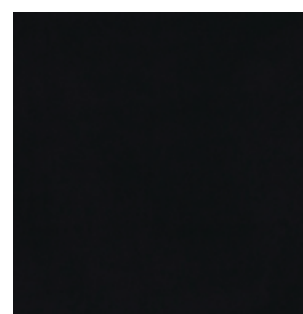
975



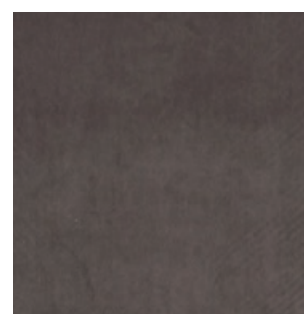
985



1122



0917

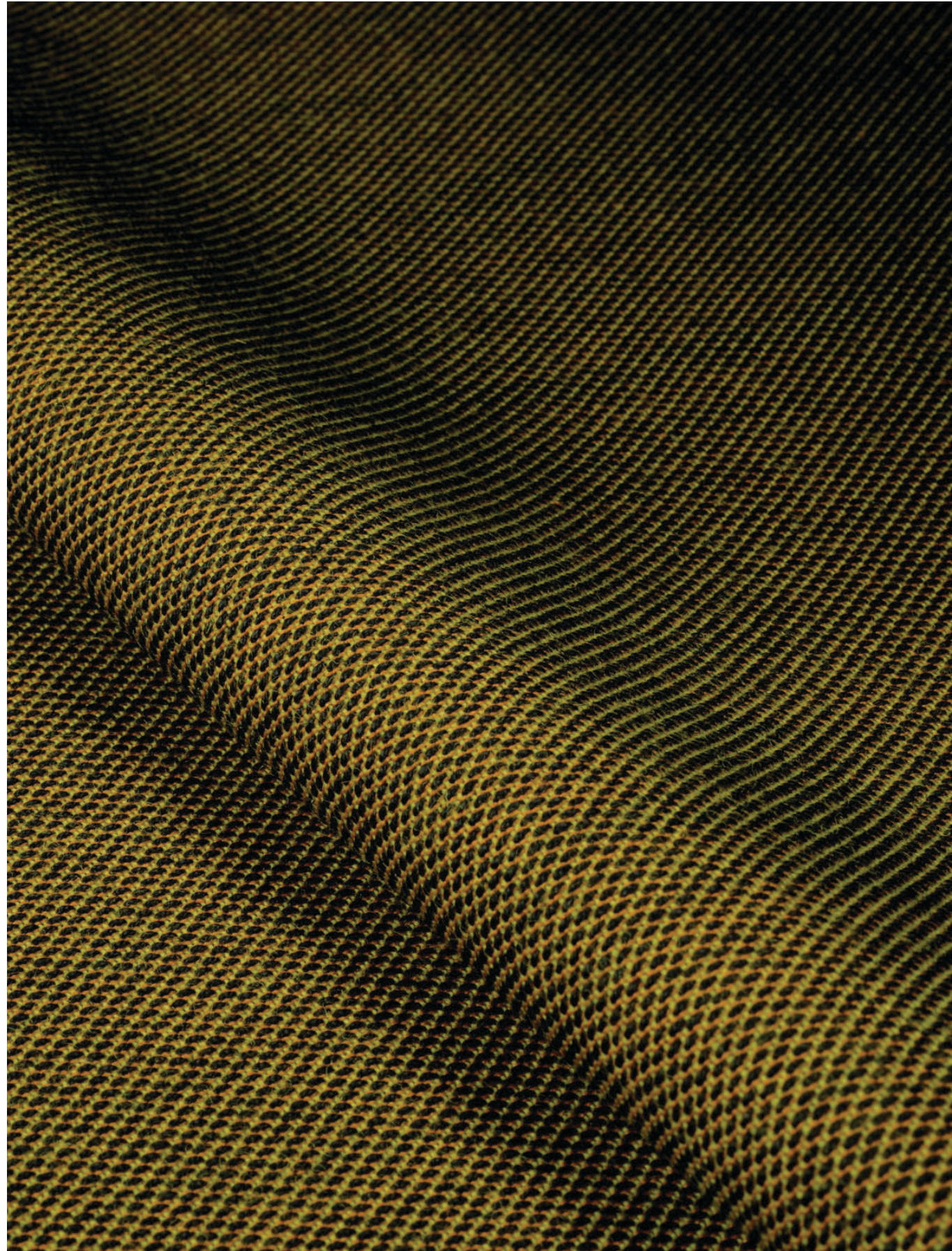


1362

# Steelcut Trio 3

Textile

Price category 2  
Manufacturer Kvadrat  
Materials 90% New wool, 10% Nylon  
Martindale 100.000  
Lightfastness 5-7  
Pilling 4



# Steelcut Trio 3

Textile

Price category 2  
Manufacturer Kvadrat  
Materials 90% New wool, 10% Nylon  
Martindale 100.000  
Lightfastness 5-7  
Pilling 4



# Steelcut Trio 3

Textile

Price category 2  
Manufacturer Kvadrat  
Materials 90% New wool, 10% Nylon  
Martindale 100.000  
Lightfastness 5-7  
Pilling 4



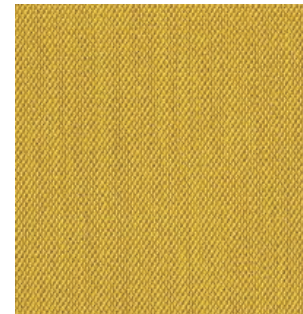
426



436



446



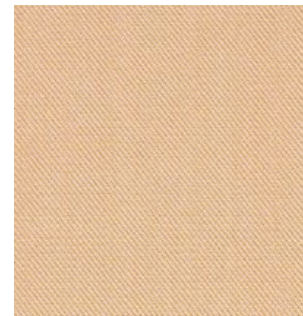
453



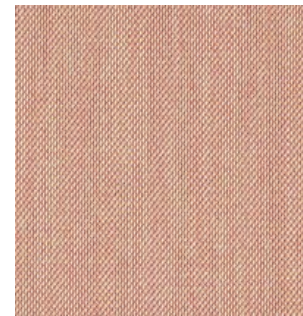
466



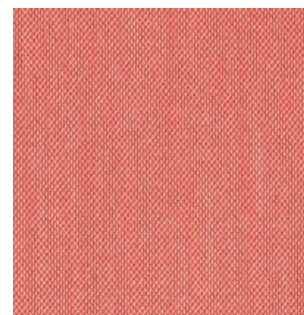
476



506



515



526



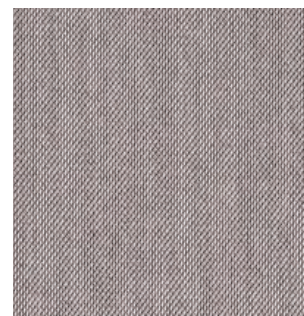
533



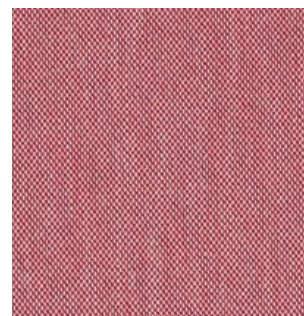
553



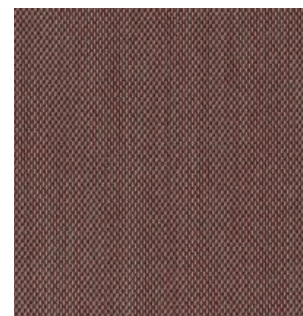
576



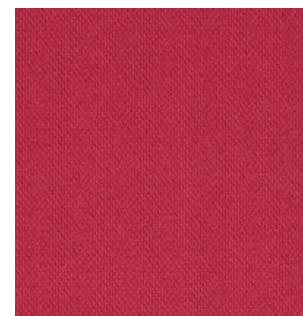
616



636



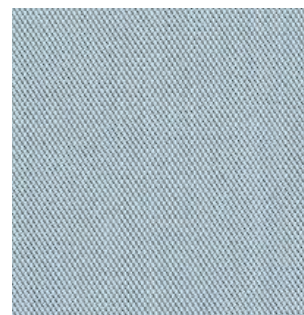
645



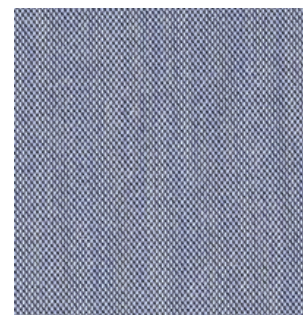
666



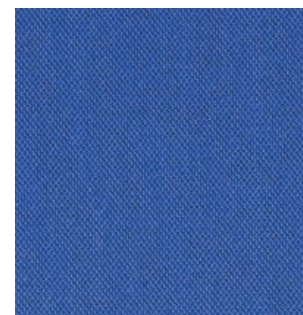
686



713



716



746

# Steelcut Trio 3

Textile

Price category 2  
Manufacturer Kvadrat  
Materials 90% New wool, 10% Nylon  
Martindale 100.000  
Lightfastness 5-7  
Pilling 4



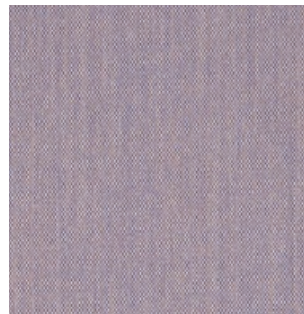
756



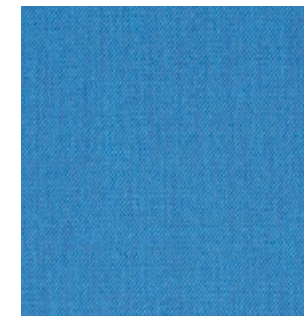
776



796



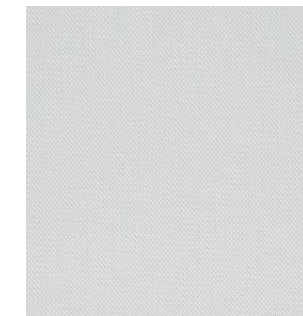
806



865



883



906



916



946



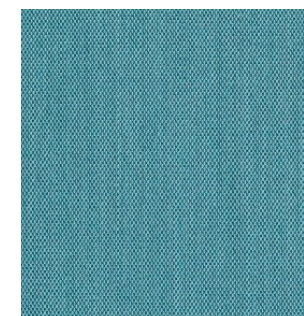
953



966



976



983



996

3

*Textile Category 3*

# Arctic

Textile

Price category 3  
Manufacturer JAB  
Materials 51% Polyacrylic,  
31% Viscose, 18% Polyester  
Martindale 30.000



# Arctic

Textile

Price category 3  
Manufacturer JAB  
Materials 51% Polyacrylic,  
31% Viscose, 18% Polyester  
Martindale 30.000



1-1365-040



1-1365-070

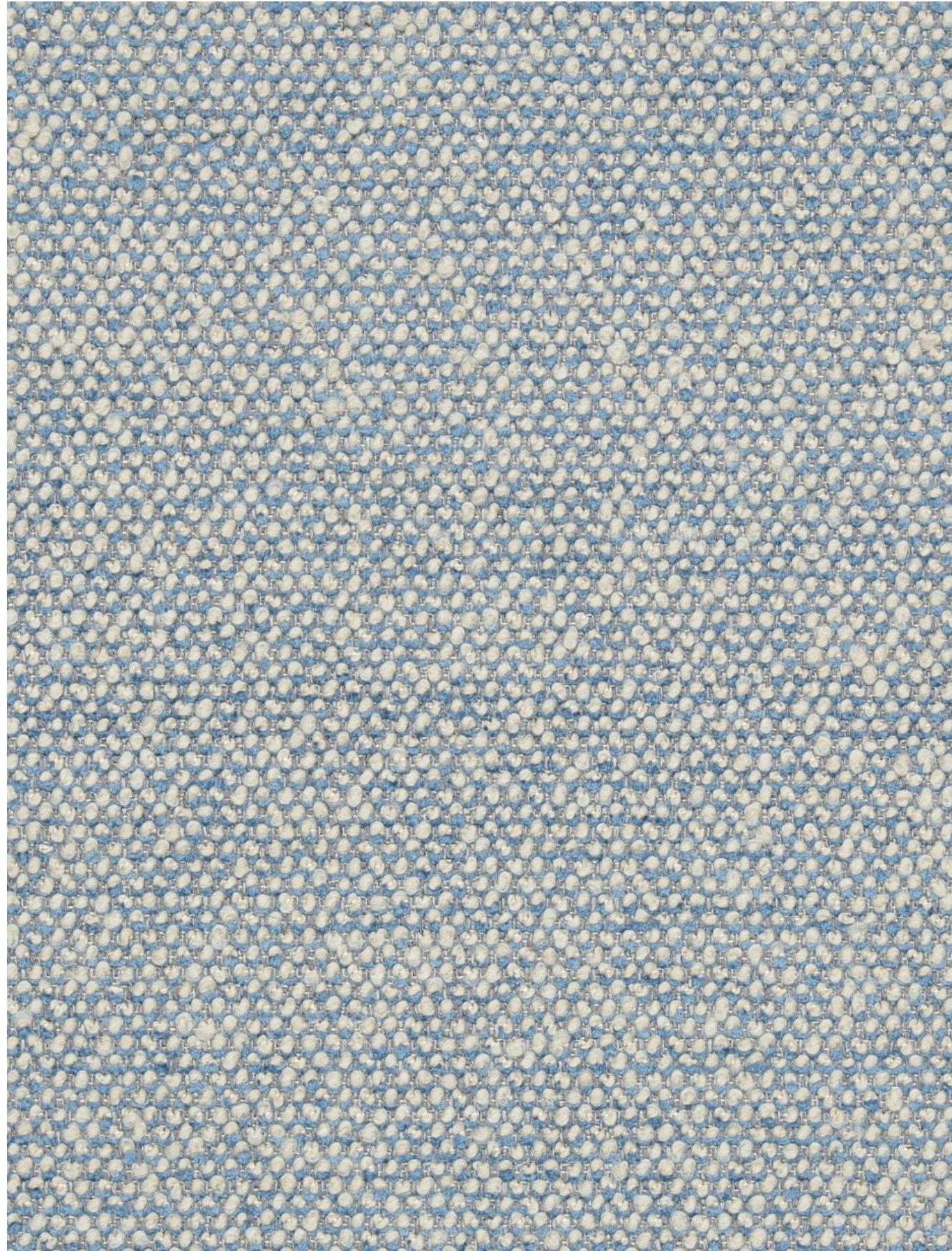


1-1365-091

# Safire

Textile

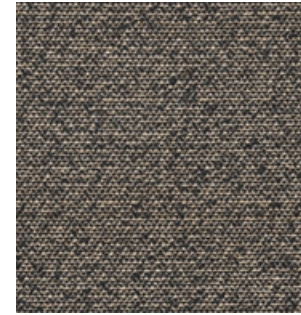
Price category 3  
Manufacturer Sahco  
Materials 43% Viscose, 17% Polyacrylic,  
15% New wool, 9% Cotton, 8% Linen,  
8% Polyester  
Martindale 40.000  
Lightfastness 6  
Pilling 3



# Safire

Textile

Price category 3  
Manufacturer Sahco  
Materials 43% Viscose, 17% Polyacrylic,  
15% New wool, 9% Cotton, 8% Linen, 8%  
Polyester  
Martindale 40.000  
Lightfastness 6  
Pilling 3



001



002



003



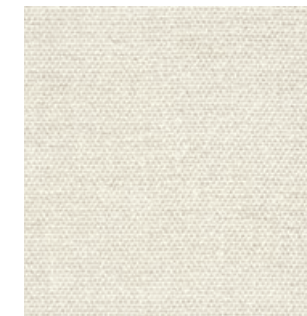
004



005



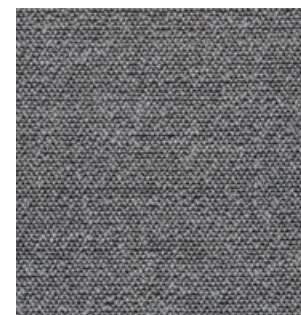
006



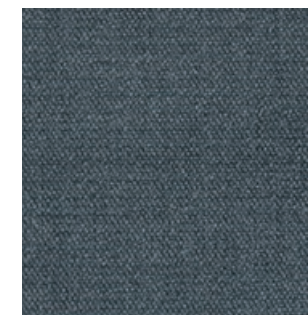
007



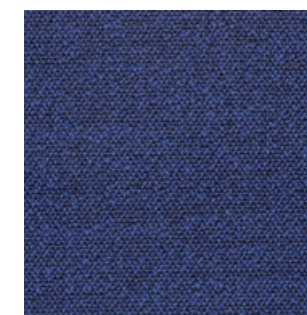
008



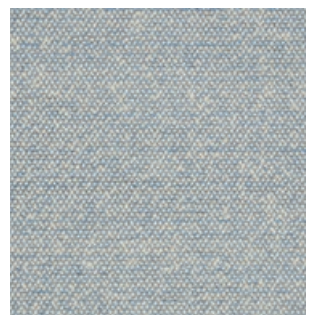
009



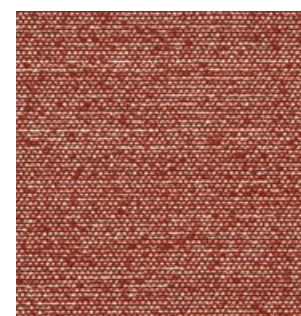
010



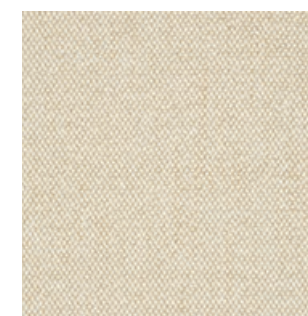
011



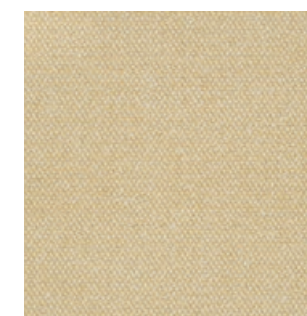
012



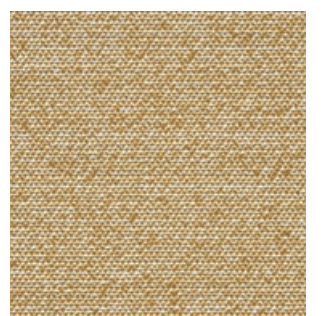
013



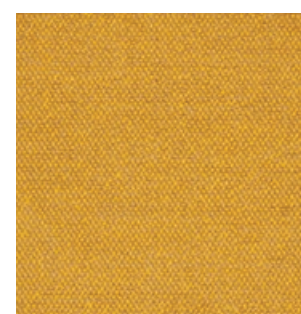
014



015



016



017

# Vidar 4

Textile

Price category 3  
Manufacturer Kvadrat  
Materials 94% new wool, 6% nylon  
Martindale 100,000  
Lightfastness 7 (ISO 1-8)  
Pilling 4 (ISO 1-5)



# Vidar 4

Textile

Price category 3  
Manufacturer Kvadrat  
Materials 94% new wool, 6% nylon  
Martindale 100,000  
Lightfastness 7 (ISO 1-8)  
Pilling 4 (ISO 1-5)



# Vidar 4

Textile

Price category 3  
Manufacturer Kvadrat  
Materials 94% new wool, 6% nylon  
Martindale 100,000  
Lightfastness 7 (ISO 1-8)  
Pilling 4 (ISO 1-5)



0582



0622



0633



0653



0656



0676



0693



0723



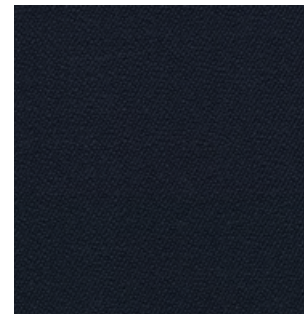
0733



0745



0772



0786



0872



0913



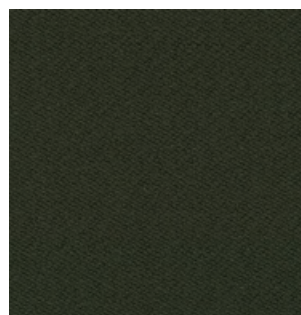
0932



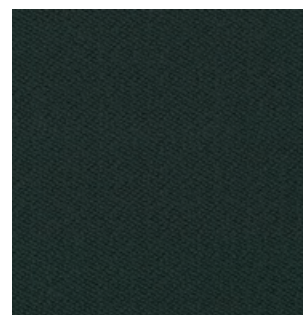
0943



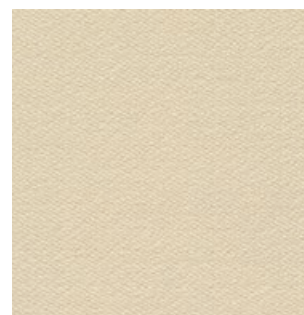
0956



0972



1062



1511

# Vidar 4

Textile

Price category 3  
Manufacturer Kvadrat  
Materials 94% new wool, 6% nylon  
Martindale 100,000  
Lightfastness 7 (ISO 1-8)  
Pilling 4 (ISO 1-5)



1880



# Zero

Textile

Price category 3  
Manufacturer Kvadrat  
Materials 65% cotton, 20% polyacrylic,  
15% polyester  
Martindale 70,000  
Lightfastness 5-6 (ISO 1-8)  
Pilling 5 (ISO 1-5)



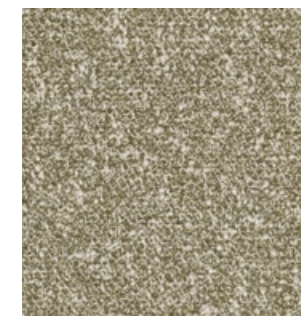
# Zero

Textile

Price category 3  
Manufacturer Kvadrat  
Materials 65% cotton, 20% polyacrylic,  
15% polyester  
Martindale 70,000  
Lightfastness 5-6 (ISO 1-8)  
Pilling 5 (ISO 1-5)



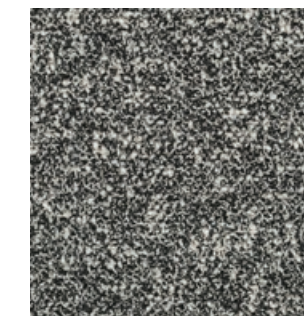
0001



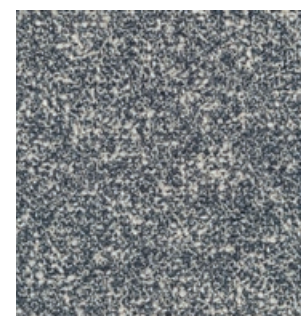
0002



0003



0004



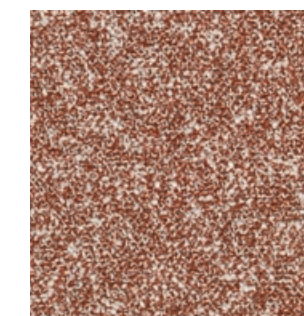
0005



0006



0007



0008



0009



0010



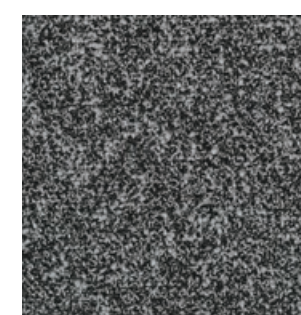
0011



0012



0013



0014



0015



0016

**4**

*Textile Category 4*

# Doppiopanama

Textile

Price category 4  
Manufacturer Dedar  
Materials 60% Cotton, 35% Polyester  
5% Polyamide  
Martindale 35.000



# Doppiopanama

Textile

Price category 4  
Manufacturer Dedar  
Materials 60% Cotton, 35% Polyester  
5% Polyamide  
Martindale 35.000



T14012\_001



T14012\_002



T14012\_003



T14012\_004



T14012\_005

# Grand Mohair

Textile

Price category 4  
Manufacturer Danish Art Weaving  
Materials 100% Mohair  
Martindale Being tested  
(>200.000 Wyzenbeek)  
Lightfastness 4,5 (ISO 1-8)  
Pilling Being tested  
Certificates Oeko-Tex



# Grand Mohair

Textile

Price category 4  
Manufacturer Danish Art Weaving  
Materials 100% Mohair  
Martindale Being tested  
(>200.000 Wyzenbeek)  
Lightfastness 4,5 (ISO 1-8)  
Pilling Being tested  
Certificates Oeko-Tex



1103



2600

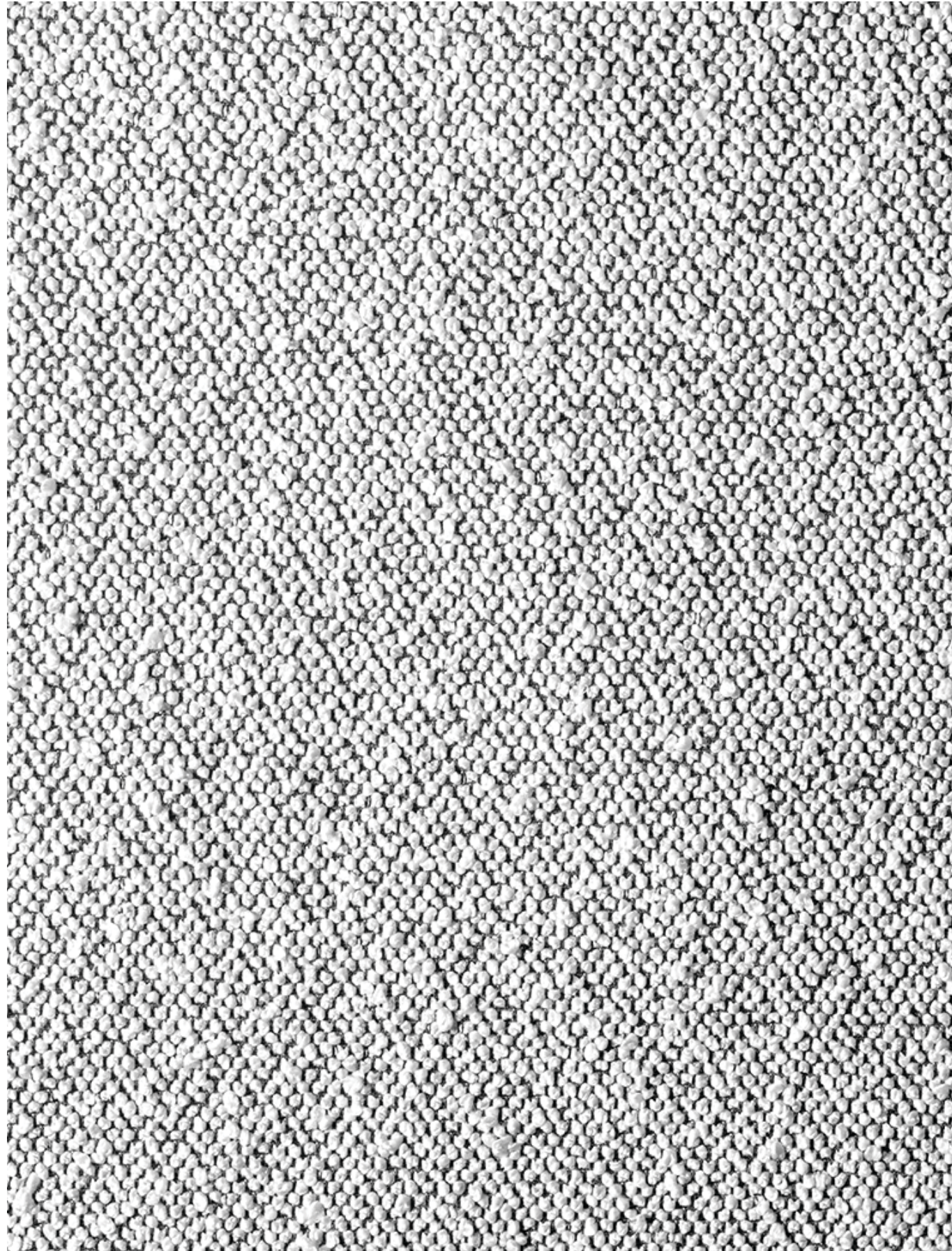


8205

# Lupo

Textile

Price category 4  
Manufacturer Dedar  
Materials 72% Wool, 27% Cotton  
1% Polyamide  
Martindale 40.000



# Lupo

Textile

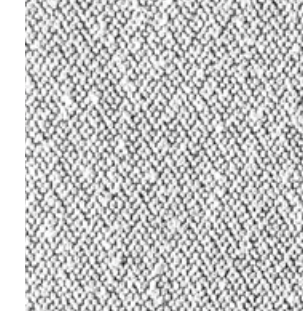
Price category 4  
Manufacturer Dedar  
Materials 72% Wool, 27% Cotton  
1% Polyamide  
Martindale 40.000



T19028\_001



T19028\_002



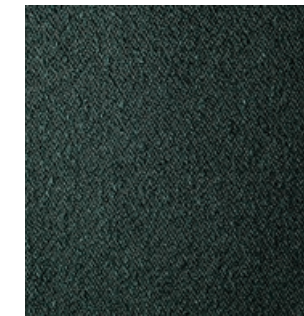
T19028\_003



T19028\_004



T19028\_005



T19028\_006



T19028\_007



T19028\_008



T19028\_009

## Upholstery Selection & Furniture

The by Lassen upholstery programme shows an overview of our textile and leather standard programme. All textile and leather collections are available in all colours. Please note that the colour references are only intended as a guide. For further information please see manufacturer websites, or contact your local by Lassen sales representative.

Selection of textiles or leather outside of our upholstery programme, is subject to final testing and approval. Additional deliverytime may also occur.

sorensenleather.com  
nevotex.com  
ca-mo.com  
skandilock.com



## Upholstery Selection & Furniture

Use table to determine the upholstery options available for fabric-covered items.

	THE TIRED MAN	MY OWN CHAIR	INGEBORG	VILHELM	MINGLE	CONSTANCE CHAIR
<b>TEXTILE</b>						
<b>PRICE CATEGORY 1</b>						
Dakar, Nevotex	•	•	•	•		
Ultra, Sørensen Leather	•	•	•	•		
<b>PRICE CATEGORY 2</b>						
Dunes, Sørensen Leather	•	•	•	•		
Nevada, Camo	•	•	•	•		
Nuance, Sørensen Leather	•	•	•	•		
Shade, Sørensen Leather	•	•	•	•		
<b>PRICE CATEGORY 3</b>						
Royal Nubuck, Sørensen Leather	•	•	•	•		
Sheepskin, Skandilock	•	•	•	•	•	•
<b>PRICE CATEGORY 4</b>						
Elegance, Sørensen Leather	•	•				

**1**

*Leather Category 1*

# Dakar

Leather

Price category 1  
Manufacturer Nevotex  
Materials Aniline leather  
Thickness 0.9 - 1.1 mm  
Certificate OEKO-TEX®

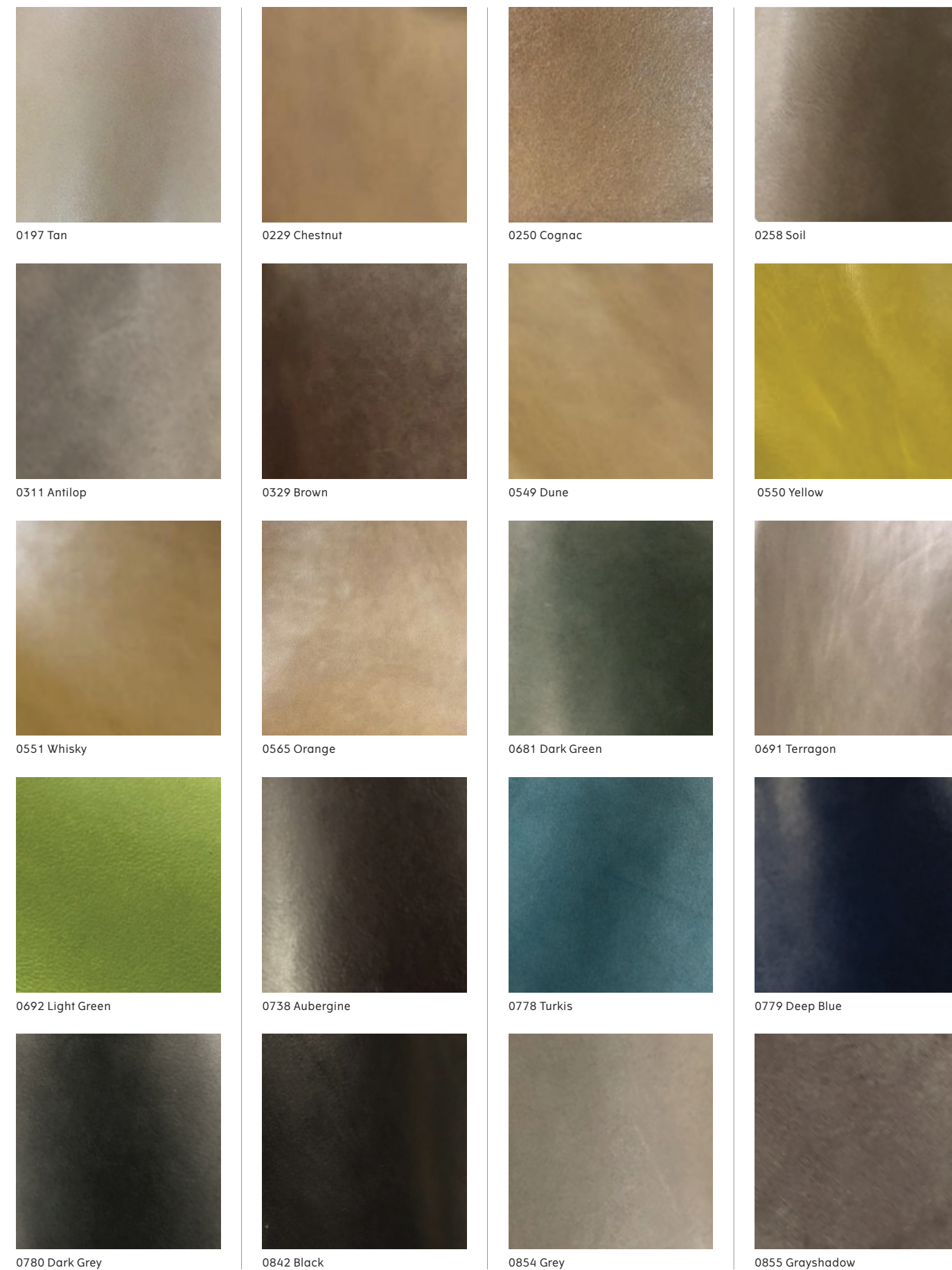


Tailor Sofa, Dark Stained Oak / Dakar 0311, by Rui Alves

# Dakar

Leather

Price category 1  
Manufacturer Nevotex  
Materials Aniline leather  
Thickness 0.9 - 1.1 mm  
Certificate OEKO-TEX®

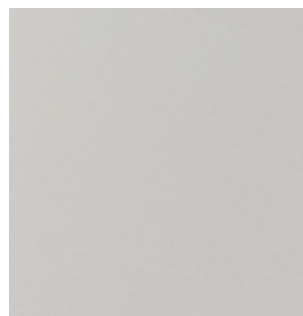




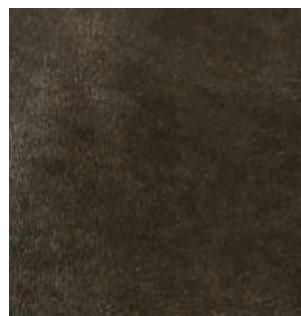
# Dakar

Leather

Price category 1  
Manufacturer Nevotex  
Materials Aniline leather  
Thickness 0.9 - 1.1 mm  
Certificate OEKO-TEX®



01015 White



03009 Ciocco



04009 Parrot



04010 Pot-Porry



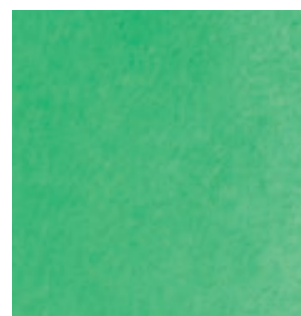
04060 Purple



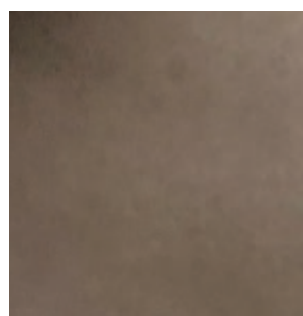
04109 Red



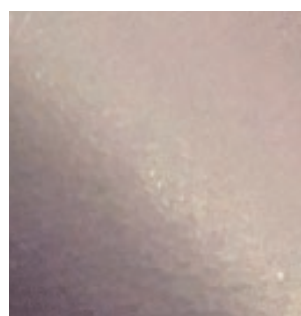
04147 Dark Red



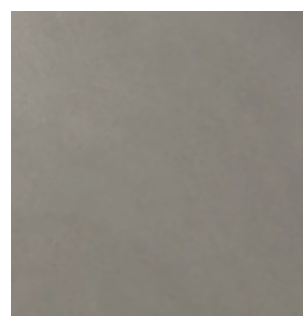
06013 Green



06048 Peatmoos



07008 Dark Purple



08079 Light Grey

# Ultra

Leather

Price category 1  
Manufacturer Sørensen Leather  
Materials Protected leather  
Thickness 0.9 - 1.1 mm



# Ultra

Leather

Price category 1  
Manufacturer Sørensen Leather  
Materials Protected leather  
Thickness 0.9 - 1.1 mm



# Ultra

Leather

Price category 1  
Manufacturer Sørensen Leather  
Materials Protected leather  
Thickness 0.9 - 1.1 mm



Moss - 41569



Oat - 41568



Smoke - 41567

2

*Leather Category 2*

# Dunes

Leather

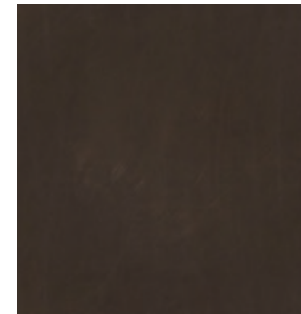
Price category 2  
Manufacturer Sørensen Leather  
Materials Aniline leather  
Thickness 1.1 - 1.3 mm  
Certificate Nordic Swan Ecolabel



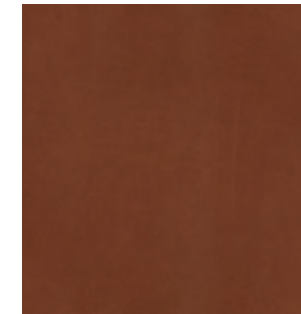
# Dunes

Leather

Price category 2  
Manufacturer Sørensen Leather  
Materials Aniline leather  
Thickness 1.1 - 1.3 mm  
Certificate Nordic Swan Ecolabel



Dark Brown - 21001



Rust - 21002



Camel - 21004



Anthrazite - 21003



Cognac - 21000



Racing green - 21005

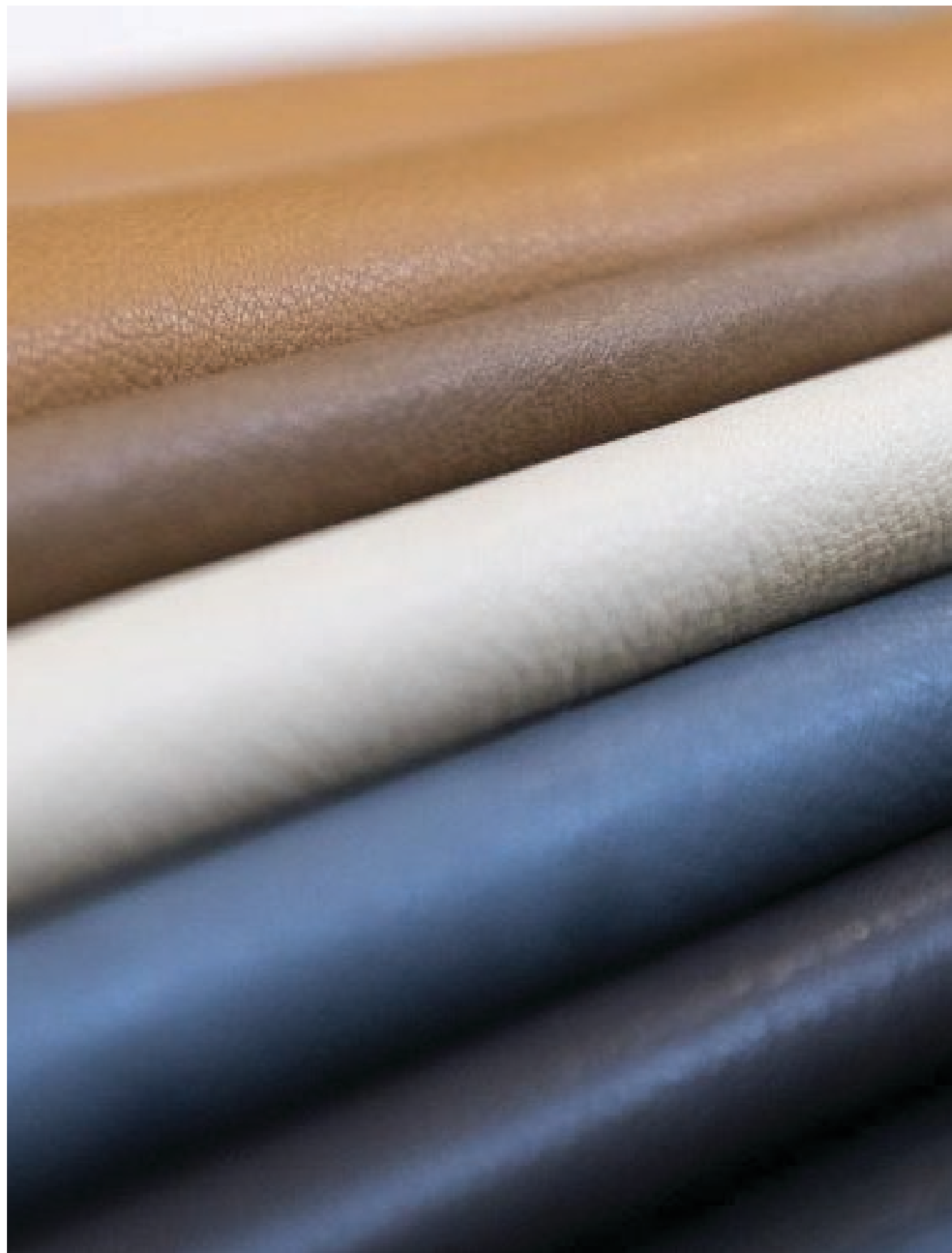


Grey - 21007

# Nevada

Leather

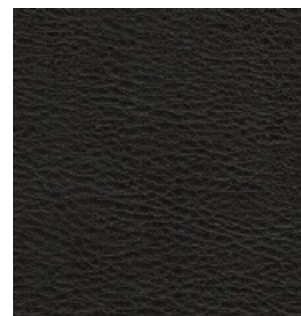
Price category 2  
Manufacturer Camo  
Materials Aniline leather  
Thickness 1,3-1,5 mm



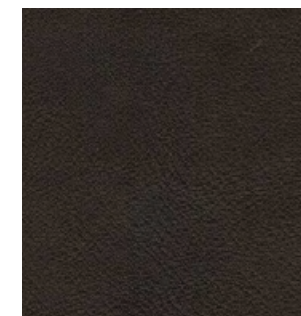
# Nevada

Leather

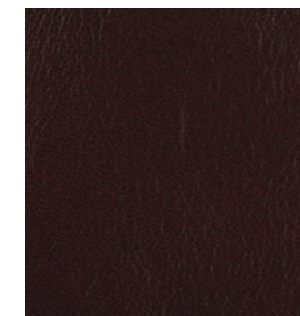
Price category 2  
Manufacturer Camo  
Materials Aniline leather  
Thickness 1,3-1,5 mm



Black 0500



Brown 2000



Coffee 2034



Burgundy 2301



Ferrari Red 2333



Cognac 2488



Sand 2694

# Nuance

Leather

Price category 2  
Manufacturer Sørensen Leather  
Materials Protected leather  
Thickness 1.1 - 1.3 mm



# Nuance

Leather

Price category 2  
Manufacturer Sørensen Leather  
Materials Protected leather  
Thickness 1.1 - 1.3 mm



# Shade

Leather

Price category 2  
Manufacturer Sorensen Leather  
Materials Protected Aniline leather  
Thickness 1.1 - 1.3 mm



# Shade

Leather

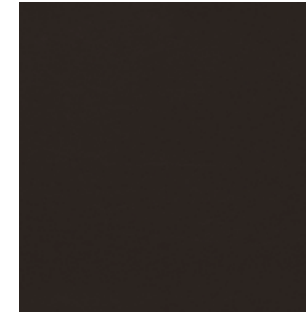
Price category 2  
Manufacturer Sorensen Leather  
Materials Protected Aniline leather  
Thickness 1.1 - 1.3 mm



Raw siena - 20290



Basalt - 20297



Ebony - 20293



Slade - 20299



Raw umber - 20292



Pitch black - 20296



Light concrete - 20294



Khaki - 20289



Sand - 20298



Ochre - 20291



3

*Leather Category 3*

# Royal Nubuck

Leather

Price category 3  
Manufacturer Sørensen Leather  
Materials Aniline leather  
Thickness 1.2 – 1.6 mm



Harbour Dining Chair, Dark Stained Oak / Royal Nubuck 30253, by Norm Architects

# Royal Nubuck

Leather

Price category 3  
Manufacturer Sørensen Leather  
Materials Aniline leather  
Thickness 1.4 – 1.6 mm



# Sheepskin

Sheepskin

Price category 3  
Manufacturer Skandilock  
Materials Sheepskin  
Thickness 17mm



# Sheepskin

Sheepskin

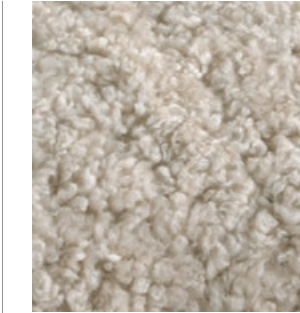
Price category 3  
Manufacturer Skandilock  
Materials Sheepskin  
Thickness 17mm



Off white



Sahara



Moonlight



Honey



Espresso



Green Tea

**4**

*Leather Category 4*

# Elegance

Leather

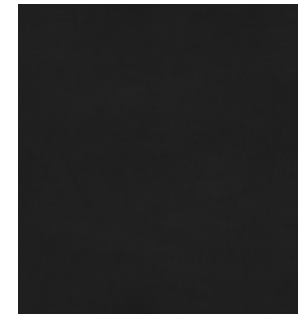
Price category 4  
Manufacturer Sørensen Leather  
Materials Aniline leather  
Thickness 1.2 – 1.4 mm



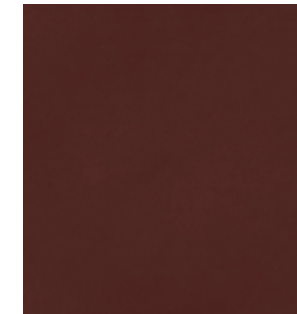
# Elegance

Leather

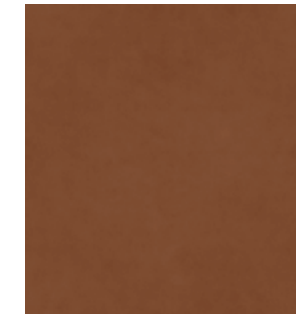
Price category 4  
Manufacturer Sørensen Leather  
Materials Aniline leather  
Thickness 1.2 – 1.4 mm



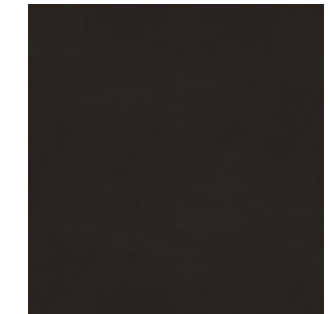
Black - 20198



Indian Red - 20193

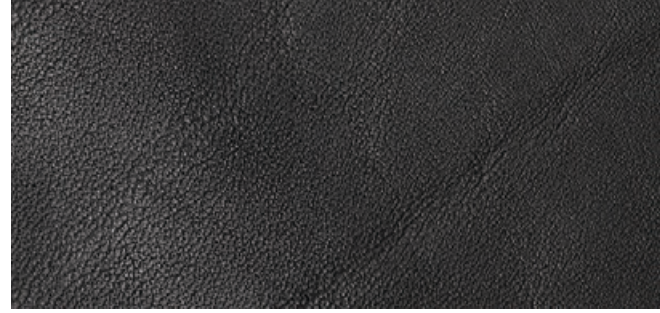


Walnut - 20195



Mocca - 20197

# Natural Markings On Leather



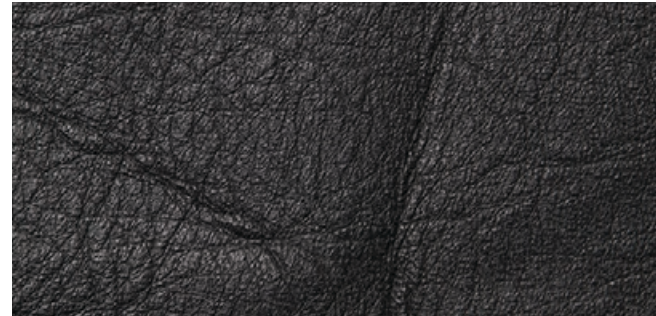
FAT WRINKLE



SCAR / INSECT BITES



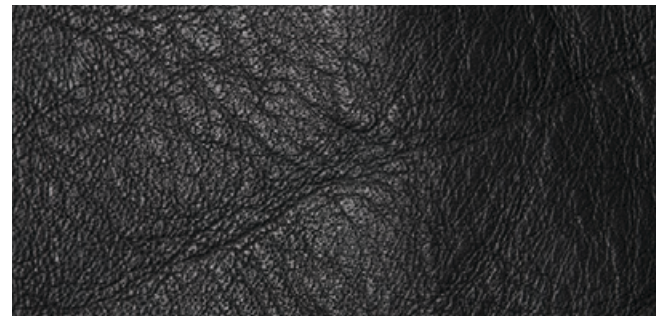
FOLDS



BUTCHING SCAR



HEALED SCARS



FAT WRINKLES

Individual and unique markings may appear on the leather and should not be considered defects.