

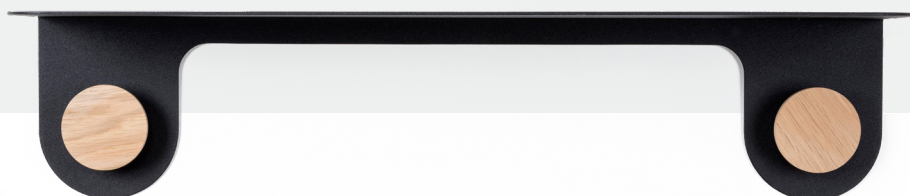


GAZZDA

Hook Wall Shelf

Product sheet

design by
Mustafa Čohadžić



Hook Wall Shelf

Product facts

Materials

Knobs	Solid oak
Finish	Hardwax oil
Shelf	Powder coated steel

Technical features

Shelf

The shelf form is laser cut from a 2 mm thick flat steel sheet panel and then bent by 90 degrees in its final form. It has a powder-coated and fine structure granulated surface finish available in four colours.

Wooden knob

The wooden knob has a metal base in the same powder-coated color as the rest of the shelf. The wooden part has laser engraved branding on the inside and is available in a plant-based Hardwax oil finish (white oil color), which retains the wood's natural state. Hanger bolts and plastic dowels needed for mounting are included in the packaging.

Cleaning

Please see [Product](#) or [Material](#) page on our website.

Notes to consider

Variations

Natural variations in wood color and surface may occur. Regular maintenance will ensure the wood preserves its authentic beauty and can last for generations.

Product changes

Please note that Gazzda reserves the right to alter construction and design without notice.

Dimensions (tolerances)

The dimensions shown are indicative, they may vary due to the natural properties of wood, season, or manufacturing processes. Deviations from the specified size may occur, usually no more than 1 cm.

For all additional inquiries regarding Hook Wall Shelves please feel free to [contact us](#).

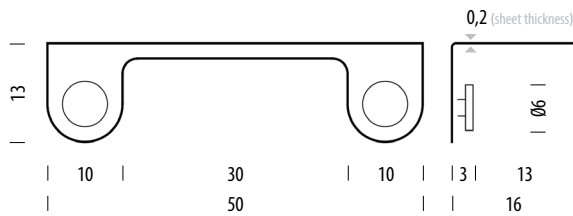
Hook Wall Shelf 50

Base Powder-coated steel, ^{Wooden knobs} Solid oak

Version: 1-1-2023

Basic info

Design	Mustafa Čohadžić
Product size	W: 50, D: 16, H: 13
Packaging	W: 51,5, D: 17, H: 14
Volume	0,012 m ³
Net weight	1,8 kg
Gross weight	2,5 kg



Item no. 107

Assembly 15 min / 1 person

Metal sheet

Thickness (cm)

0,2

Selected options

Knobs

Shelf



Oiled Oak
1015
White oil



RAL 9016
White



RAL 9005
Black



RAL 3015
Light pink



RAL 6027
Light green

Indicated materials and colours are selected by Gazzda as best-selling items and their lead time is shorter than of made-to-order options. Please consult the current price list or our customer service for the lead time of selected options.

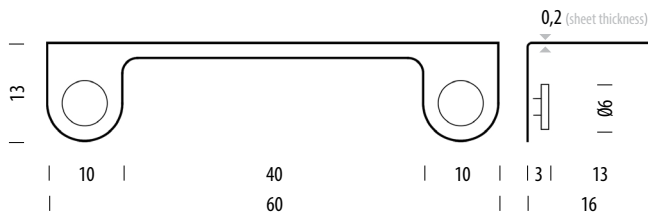
Hook Wall Shelf 60

Base Powder-coated steel, ^{Wooden knobs} Solid oak

Version: 1-1-2023

Basic info

Design	Mustafa Čohadžić
Product size	W: 60, D: 16, H: 13
Packaging	W: 61,5, D: 17, H: 14
Volume	0,015 m ³
Net weight	2,1 kg
Gross weight	2,8 kg



Item no. 108

Assembly 15 min / 1 person

Metal sheet

Thickness (cm)

0,2

Selected options

Knobs

Shelf



Oiled Oak
1015
White oil



RAL 9016
White



RAL 9005
Black



RAL 3015
Light pink



RAL 6027
Light green

Indicated materials and colours are selected by Gazzda as best-selling items and their lead time is shorter than of made-to-order options. Please consult the current price list or our customer service for the lead time of selected options.

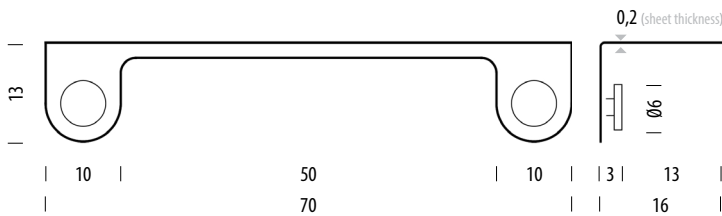
Hook Wall Shelf 70

Base Powder-coated steel, ^{Wooden knobs} Solid oak

Version: 1-1-2023

Basic info

Design	Mustafa Čohadžić
Product size	W: 70, D: 16, H: 13
Packaging	W: 71,5, D: 17, H: 14
Volume	0,017 m ³
Net weight	2,3 kg
Gross weight	3 kg



Item no. 108

Assembly 15 min / 1 person

Metal sheet

Thickness (cm)

0,2

Selected options

Knobs

Shelf



Oiled Oak
1015
White oil



RAL 9016
White



RAL 9005
Black



RAL 3015
Light pink



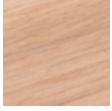
RAL 6027
Light green

Indicated materials and colours are selected by Gazzda as best-selling items and their lead time is shorter than of made-to-order options. Please consult the current price list or our customer service for the lead time of selected options.

Hook Wall Shelf

Available materials

Knobs | Solid oak



Oiled
1015
White oil

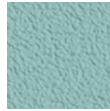
Shelf | Powder-coated steel



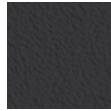
RAL 9016
White



RAL 3015
Light pink



RAL 6027
Light green



RAL 9005
Black