



Paged

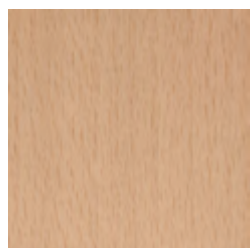
PAGED KONTRAKT

WZORNIK
WYBARWIEN DREWNA

PAGED CONTRACT

WOOD FINISH
SAMPLER

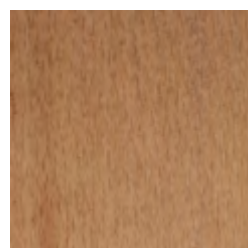
BUK / BEECH



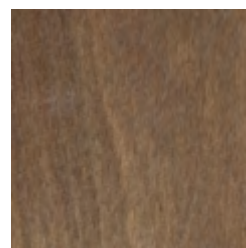
100
natural beech



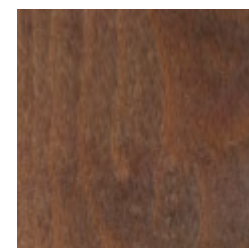
071
beech oak



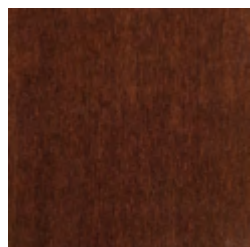
007
light



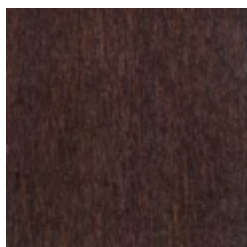
046
rustical



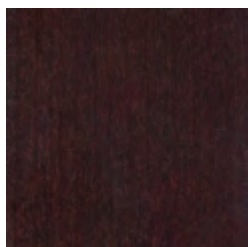
008
classic



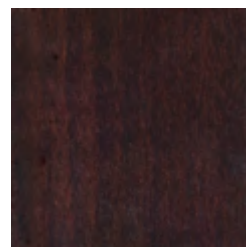
014
cognac



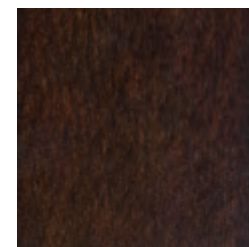
151
brown



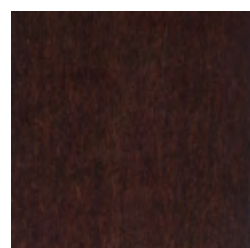
186
chocolate beech



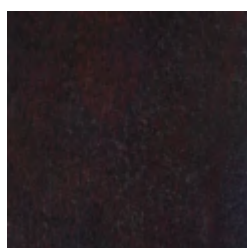
086
venge



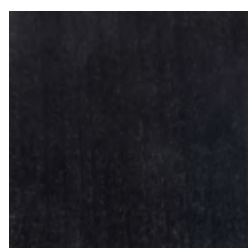
011
dark



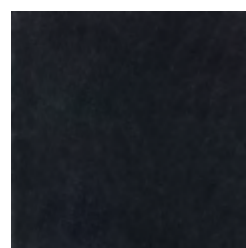
031
walnut



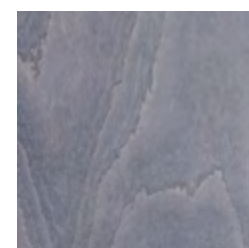
109
tudor



141
venge



063
black

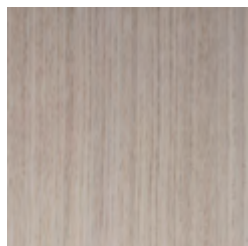


041
grey

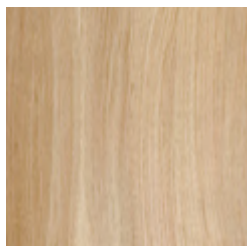
Różne gatunki drzew, a także struktura, usłojenie i różnice odcieni naturalnego drewna mają wpływ na absorbowanie bejcy w procesie barwienia. Próbka stanowi jedynie fragment drewna i ma charakter poglądowy. Nie należy oczekiwać idealnej kopii.

Different woods, as well as grain and tone variations in the same woods, absorb stains differently. The sample is provided as a guide only. Therefore an exact match cannot be guaranteed.

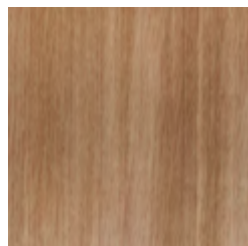
DĄB / OAK



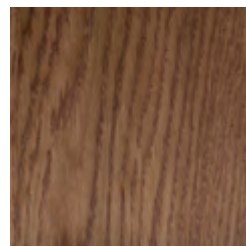
216
dąb bielony



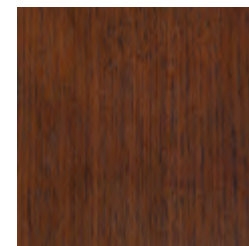
F00
naturalny matowy



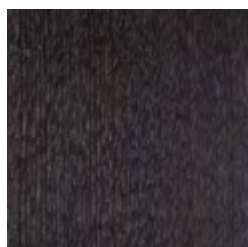
100
dąb naturalny



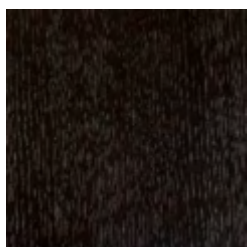
987
dąb miodowy



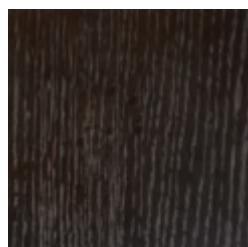
982
dąb orzech antyczny



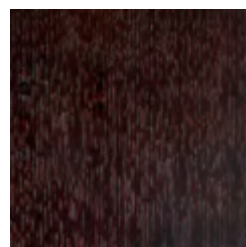
006
dąb grey



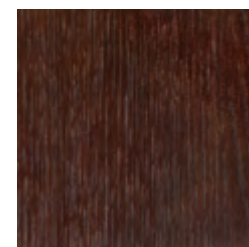
080
dąb wędzony



933
dąb wenge



199
dąb czekoladowy



031
dąb orzech 4

Różne gatunki drzew, a także struktura, usłojenie i różnice odcieni naturalnego drewna mają wpływ na absorbowanie bejcy w procesie barwienia. Próbką stanowi jedynie fragment drewna i ma charakter poglądowy. Nie należy oczekiwać idealnej kopii.

Different woods, as well as grain and tone variations in the same woods, absorb stains differently. The sample is provided as a guide only. Therefore an exact match cannot be guaranteed.