

# TENKSOM



one seat in the right direction

## Rund

Designed by Per Weiss

## Introduction

As consumers, we are all obligated to reevaluate our consumption habits. Our collective will to prioritize the purchase of products that we want to keep over time is crucial as it is the most effective way to minimize resource consumption and pollution.

As a supplier of upholstered furniture, we are obligated to design and develop products optimized for a long life cycle. At the same time, materials must be selected, and designs developed with sustainability, disassembly and recirculation in mind.

Rund is designed to honor the above without compromising functionality, comfort or aesthetics.





The first principal criteria to meet when designing and producing a meaningful sustainable product is to ensure that the product will have a degree of uniqueness, a convincing and attractive aesthetic and functional profile.

In terms of build, style and comfort, Rund is designed to respect the above.









Rund is a comfortable and practical sofa equipped with removable, washable covers. The design also makes it possible to easily replace individual parts in case they are damaged, or you just want to change the look by replacing the color of the cover or choice of fabric. This is an essential part of the design as it prolongs longevity of the sofa - in the interest of your economy and consumption of resources.







Rund's character is defined by the distinctive and comfortable rounded arm and back. The flexible, modular design will allow you to shape the sofa to your living room, your needs and seating preferences.

Rund has been designed to be comfortable without the use of cushions, but to be able to adjust the sitting comfort and adapt it to a given situation and body structure, we offer a variety of cushions to form the preferred support.





**Give back to Nature**

In addition to using FSC certified wood, we contribute to the balance of the global ecosystem by planting more than 10.000 trees every year to compensate for our consumption of wood.



**one seat  
in the right direction**

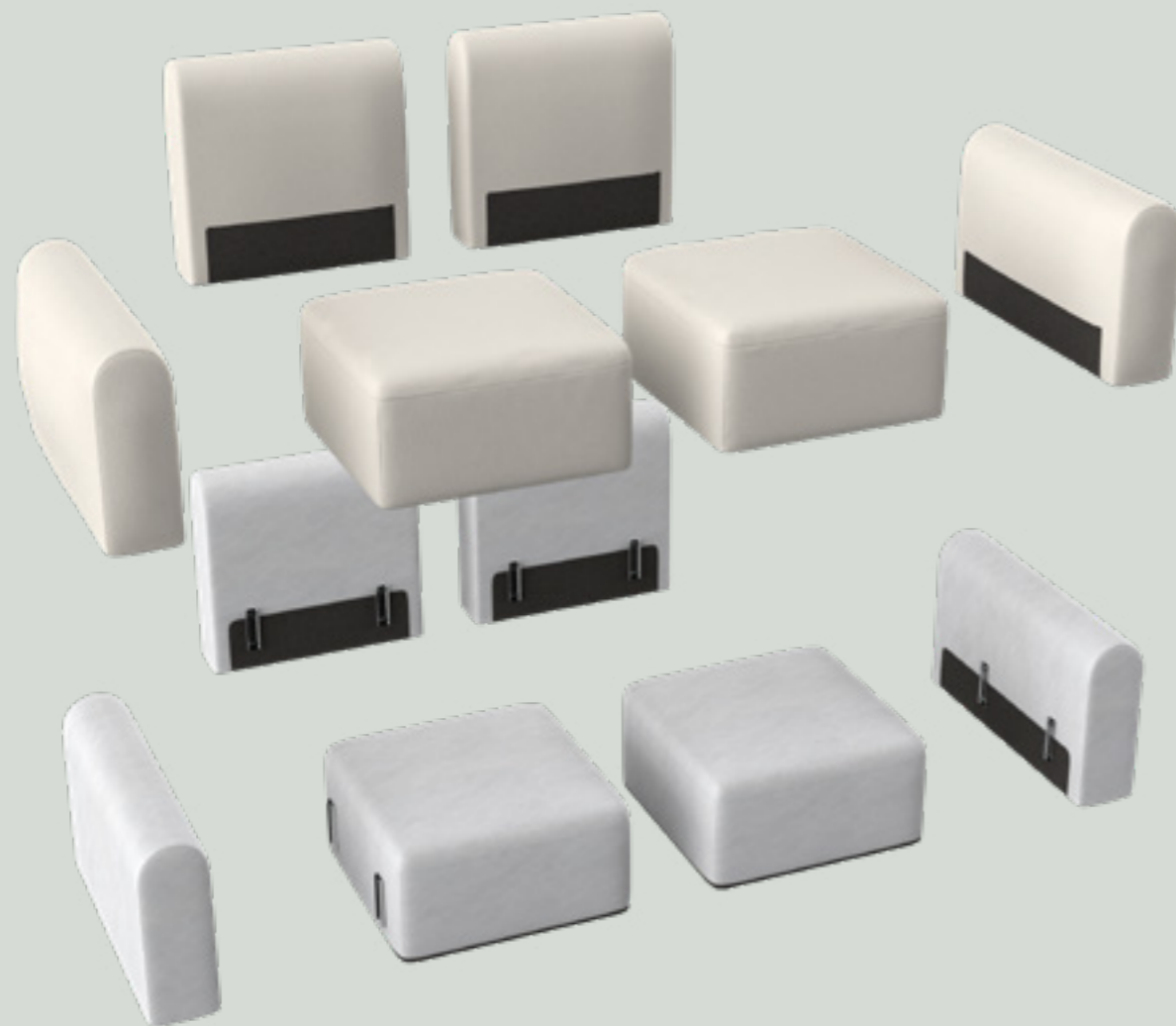


The mark of  
responsible forestry

Detachable covers



Upholstery parts



### Sustainability profile

Rund is designed for a long life cycle, which is one of the primary intentions of our design philosophy.

- Strong and durable components in a design optimized for easy maintenance.
- All parts can be individually renewed if worn out or in case of damaging accidents.
- The detachable, washable covers are fitted with velcro that enable quick removal and precise reassembly, ensuring that the sofa remains presentable over time.
- We offer 5 year warranty on the Rund concept.

### Optimized for transportation

The flat package design ensures minimized CO<sub>2</sub> emissions in relation to transport and storage as it reduces the total volume of the items. Smaller packages also mean more convenient handling and thus less risk of damage during transport as well as it makes it easier to install a sofa in for instance compact apartment buildings.

### Materials

All materials are carefully selected in respect of overall quality and sustainability profile of the product.

- Which materials do we have available?
- How is it produced and with which environmental impact?
- Can the material be reused or upcycled?
- Which materials meet our expectations in terms of aesthetics, comfort and durability?

### Disassembly, recycling & waste management

The sofa is designed as individual components which allow for separation of the sofa to ensure materials can be sorted into recyclable parts and waste.



# The combinations

## The combinations



P1N | 70 x 70 cm



P2N | 92 x 70 cm



77E | 70 x 92 cm



97E | 92 x 92 cm



A2L | 184 x 92 cm



B2L | 228 x 92 cm



A3L | 254 x 92 cm



B3L | 320 x 92 cm

The combinations



A2H | 184 x 92 cm



A3H | 254 x 92 cm



B2H | 228 x 92 cm



B3H | 320 x 92 cm



C1L | 184 x 147 cm



C2L | 184 x 147 cm



C3L | 254 x 147 cm



C4L | 254 x 147 cm

The combinations



D1L | 228 x 182 cm



D2L | 228 x 182 cm



D3L | 320 x 182 cm



D4L | 320 x 182 cm



D5L | 298 x 147 cm



D6L | 298 x 147 cm



E1L | 217 x 147 cm



E2L | 217 x 147 cm



The combinations



E3L | 239 x 182 cm



E4L | 239 x 182 cm



F1H | 217 x 217 cm



F2H | 287 x 217 cm



F3H | 287 x 217 cm



K1L | 287 x 147 cm



K2L | 287 x 147 cm

The combinations



K3L | 309 x 147 cm



K4L | 309 x 147 cm



U1L | 346 x 182 cm



U2L | 346 x 182 cm



U3L | 390 x 182 cm



U4L | 390 x 182 cm

## Fabrics

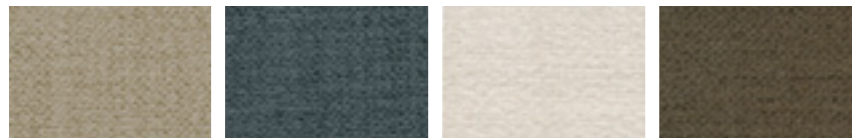
All fabrics are made from, or partly made from recycled materials.

### Bouclé | 55% Recycled Polyester / 45% Polyester | Oeko-Tex®



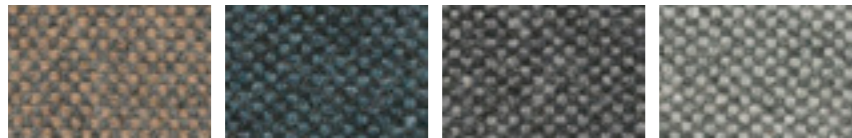
531 Bouclé, Off White      533 Bouclé, Ash Grey      534 Bouclé, Black Raven

### Vivus | 100% Recycled Polyester | Oeko-Tex®



571 Vivus, Dusty Sand      573 Vivus, Dusty Blue      574 Vivus, Dusty Off White      575 Vivus, Dusty Olive

### Mahoga | 70% Recycled Wool / 20% PL / 5% PA / 5% PA



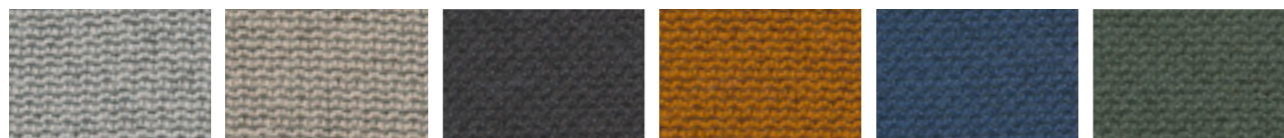
850 Mahoga, Caramel Grey      851 Mahoga, Dark Blue      852 Mahoga, Seal Grey      853 Mahoga, Dove Grey

### Argus | 100% Recycled Polyester | Oeko-Tex®



580 Argus, Navy Blue      581 Argus, Rust      583 Argus, Grey      584 Argus, Natural      585 Argus, Brown

### Cura | 98% Recycled Polyester / 2% Polyester | Oeko-Tex®



764 Cura, Sand Grey      765 Cura, Oat      766 Cura, Anthracite      767 Cura, Apricot      768 Cura, Oxford Blue      769 Cura, Saga Green

## Comfort

Rund is based on a FSC certified beech wood frame. A no-zag base with 12cm pocket spring and OEKO-tex high resilient, sandwich constructed foam. Top layer of OEKO-tex certified fiberfill creates a soft topping.



## Envelope cushions

Detachable covers. OEKO-tex carded fibres and fibertex inner covers. Please note that Envelope cushions are optional extras.

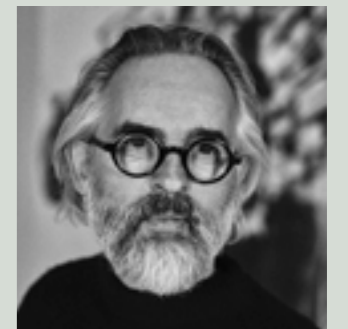


45 x 45 cm

65 x 65 cm

45 x 60 cm

35 x 70 cm



Designed by

**Per Weiss**  
Chief Design Officer



**one seat in the right direction**

[www.tenksom.com](http://www.tenksom.com)