



GAZZDA

Muna Chair

Product sheet

design by
Salih Teskeredžić



**BIGSEE
PRODUCT DESIGN
AWARD 2019
WINNER**



Muna Chair

Product facts

Materials

Body	Solid oak
Backrest	Oak veneer
Finish	Hardwax oil / lacquered
Seat	Oak veneer / leather or fabric upholstery

Technical features

Body

Muna's body is made out of solid wood, while the bent backrest is made out of thin veneer slices of high-quality oak. Chair elements are connected with characteristic and visible wedged mortise and tenon joints. Felten gliders are attached to the chair legs and are suitable for most flooring options. The seat is attached to the body through matte black plastic seat spacers.

Seat

Three material options for a seat are available: as a form-pressed veneer seat or as leather or fabric upholstered options. For further information please see Available materials and colours page in this document.

Finish

Wooden parts are available in two plant-based Hardwax oil finishes (colours), which retain the wood's natural state, as a white or natural oil or as a black lacquered option.

Cleaning

Please see [Product](#) or [Material](#) page on our website.

Standards and certifications

Muna Chair fulfil requirements of standard BAS EN 16139:2014 + BAS EN 16139/Cor1:2014 Furniture - Strength, durability and safety - Requirement for non-domestic seating.

Notes to consider

Variations

Natural variations in wood color and surface may occur. Regular maintenance will ensure the wood preserves its authentic beauty and can last for generations.

Product changes

Please note that Gazzda reserves the right to alter construction and design without notice.

Dimensions (tolerances)

The dimensions shown are indicative, they may vary due to the natural properties of wood, season, or manufacturing processes. Deviations from the specified size may occur, usually no more than 1 cm.

For all additional inquiries regarding Muna Chair please feel free to [contact us](#).

Muna Chair

Base Solid Oak, Backrest Oak veneer, Seat Upholstered / Oak veneer



Version: 1-1-2023

Basic info

Design Salih Teskeredžić

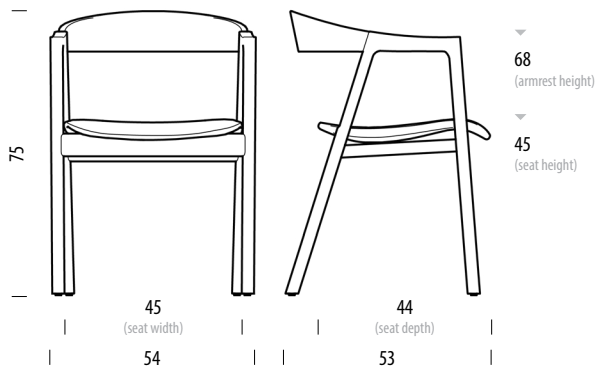
Product size W: 54, D: 53, H: 75

Packaging W: 58, D: 58, H: 80

Volume 0,27 m³

Net weight 6,2 kg

Gross weight 8,7 kg



Item no. 0F0 / 1CB

Assembled product

Dimensions	Width	Depth	Height
Seat	45	44	45
Armrest			68

Selected options

Body



Oiled Oak
1015 / 1505
White / Natural



Lacquered
RAL 9005
Black



Oiled Oak
1015
White oil

Veneer seat



Oiled Oak
1015 / 1505
White / Natural



Oiled Oak
1015
White oil

Fabric / leather upholstery



Main line flax
MLF02
Archway



Dakar leather
2732
Whisky

Indicated materials and colours are selected by Gazzda as best-selling items and their lead time is shorter than of made-to-order options. Please consult the current price list or our customer service for the lead time of selected options.

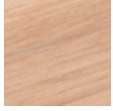
For other material options, please see the Available materials section at the end of the product sheet.

Muna Chair

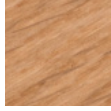
Available materials

Version: 1-1-2023

Body | Oak



Oiled
1015
White oil



Oiled
1505
Natural oil



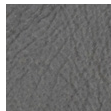
Lacquered
RAL 9005
Black

Seat | Leather upholstery

Dakar - by Leder Reinhard



0500
Black



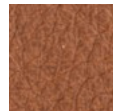
1258
Grey



1436
Stone



3411
Nature

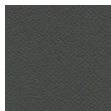


2732
Whisky

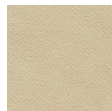
Deca vegan leather - by Camira



DEC20
Downing



DEC05
Decimal



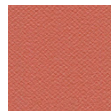
DEC03
Digit



DEC07
Decapod



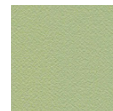
DEC14
Fortune



DEC09
Tien



DEC11
Richter



DEC15
Catenia

Seat | Fabric upholstery

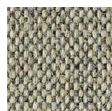
Main line flax - by Camira



MLF16
Temple



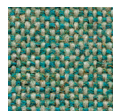
MLF20
Upminster



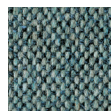
MLF02
Archway



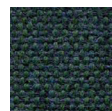
MLF10
Newbury



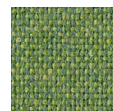
MLF24
Bayswater



MLF22
Westminster



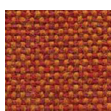
MLF32
Greenford



MLF18
Tufnell



MLF17
Tooting



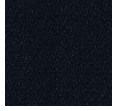
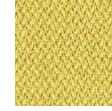
MLF13
Leyton

Muna Chair

Available materials

Version: 1-1-2023

Era - by Camira

CSE14
ForwardCSE13
PresentCSE45
PromptCSE42
RangeCSE20
AeonCSE16
TimelapseCSE26
TurnCSE03
Lifetime

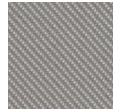
Relate - by Kvadrat



0171



0181



0111



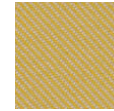
0771



0961

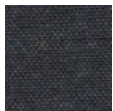


0671



0431

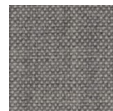
Remix - by Kvadrat



0753



0163



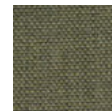
0123



0823



0912



0933



0612

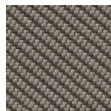
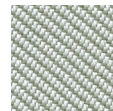
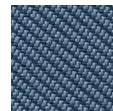
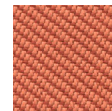


0632

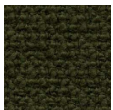
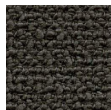
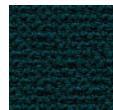
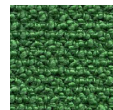
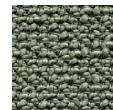
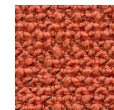
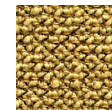


0762

Oceanic - by Camira

OOC01
FlotsamOOC08
BayOOC14
RiptideOOC13
PaddleOOC11
NeptuneOOC05
CoralOOC07
Barrier

Yoredale - by Camira

UDA08
GayleUDA25
LeyburnUDA17
RibbleUDA10
CrayUDA04
HardrawUDA02
KidstoneUDA03
AskriggUDA05
Simonstone

Vidar - by Kvadrat



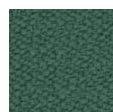
0182



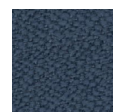
0133



0222



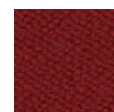
0943



0733



0872



0582



0472