



GHOST TABLE

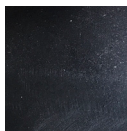
by Kristian Sofus Hansen & Tommy Hyldahl

Ghost Coffee Table is a solid table in cast aluminium. The elegant table is casted with three pointed legs and a table top with a groove in the outline, which beautifully highlights the qualities of the material.

The table is taken directly from the mould without polishing, which gives it a unique rough surface with texture of the mould. The raw aluminium table is powder coated and afterwards handpainted, which gives it a beautiful and diverse surface, with alternation between a matte and a reflective finish.

NORR11

GHOST TABLE



Raw Black

MATERIALS

Aluminium. Powdercoated and afterwards handpainted

CARE INSTRUCTIONS

Follow instructions on partner.norr11.com

ORIGIN

Asia

DIMENSIONS

Height: 40 cm
Diameter: 50 cm

