



LINIE DESIGN

HANDMADE RUGS

# CLEAR LINES, SIMPLICITY AND UNCLUTTERED AESTHETICS — ALL WOVEN TOGETHER IN UNCOMPROMISING QUALITY FROM START TO FINISH.

Established in Denmark in 1980 with the desire to create quality rugs, Linie Design now has customers in over 65 countries and has grown to become the largest wholesaler in Northern Europe. The secret to our success is intrinsically linked to our Nordic design traditions – clear lines, simplicity and uncluttered aesthetics – all woven together in uncompromising quality from start to finish.

Our vision is to fill homes with beauty, adding value to everyday lives by creating elegant and functional designs that are made to last. Skilled Danish designers seek to fuse modern designs with timeless and traditional crafts, constantly exploring new ideas and patterns to create unique and innovative designs that add atmosphere and personality to a room.

Each rug is carefully handcrafted by Indian master artisans, using traditional methods passed down through generations, ensuring authenticity and a consistently high quality. We are committed to supporting local communities, ensuring safe and efficient working practices, while consciously attempting to minimise our environmental impact. All our products are developed and produced in compliance with relevant international and national regulatory requirements.

Our numerous collections offer flexible design solutions, and our large inventory ensures a fast delivery, supported by friendly and efficient customer care. By striving to understand our customers' unique needs, we aim to provide a professional and personal service based on traditional values of honesty, openness and trust.

Various is an eclectic fusion of colours, patterns, structures – all sharing the same focus on quality and reflecting the elegant, minimalist attributes of Danish design. The collection's strength lies in its diversity, showcasing the full scope of our designers' skills and creative processes. This multifaceted range celebrates the uniqueness of our customers and their lifestyles, offering endless design possibilities for home and corporate use.



# VARIOUS

## COLLECTION



# HAND — KNOTTED

It is hard to imagine the amount of time and skill that go into making hand-knotted rugs. They are produced using time-honoured techniques by expert weavers who tie knots around the individual threads on a specially designed loom. Complex patterns require denser knotting, with the intricacy of the design affecting the time and cost of the finished product. This process gives our designers infinite design and colour possibilities, enabling them to create geometric patterns, symmetrical motifs and free-form shapes that can be replicated in thousands of tiny knots.

Each rug is a unique work of art with its own distinctive charm and character, possessing the quality, strength and durability to ensure it will last decades if properly maintained.





BLACK



GREY

WWW.LINIEDESIGN.COM

*Model* RUFFLE

*Quality* HAND-KNOTTED

*Surface composition* 100% WOOL

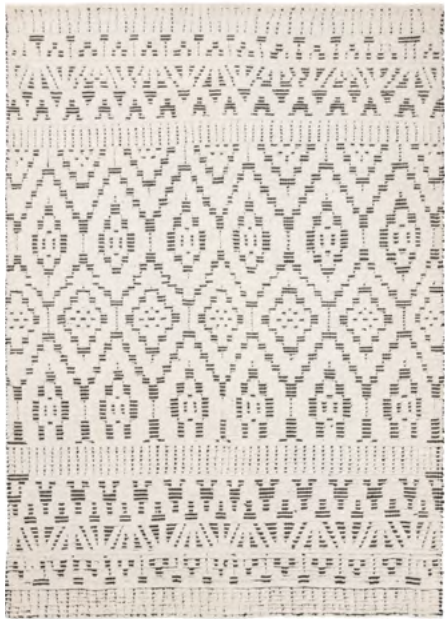
*Fringes* YES

*Sizes (cm)* 140/200, 170/240



# RUFFLE

BLACK



WHITE/BLACK

*Model* ZELBIO

*Quality* HAND-KNOTTED

*Surface composition* 100% WOOL

*Fringes* NO

*Sizes (cm)* 140/200, 170/240, 200/300

WWW.LINIEDESIGN.COM



**ZELBIO**

WHITE/BLACK

# HANDLOOM

Using ancient handloom techniques, this collection of rugs has been skilfully crafted by hand to create an exclusive and authentic expression that machines are unable to replicate. Expert craftsfolk weave the product by interlacing the yarn lengthwise and widthwise with a shuttle, forming the desired pattern in a traditional or contemporary design. The texture and density also vary greatly, depending if the rug is flat-woven or produced with a pile for a softer, plush finish. Different dimensions can also be created by screen printing, with single or multiple layers of print in varying colours being laid over the top to produce the desired effect.

After being removed from the loom, the rugs are taken to their finishing section where a team of artisans finish them by hand. All details are carefully inspected to ensure the final result complies with the requirements of the sample or artwork that originated the order. Once the quality has been approved, it is ready for its new home, where it will retain its beauty for many years to come.





SLATE



SILVER

WWW.LINEIDESIGN.COM

*Model* AIMI  
*Quality* HANDLOOM  
*Surface composition* 100% VISCOSE  
*Fringes* NO  
*Sizes (cm)* 140/200, 170/240, 200/300



**AIMI**  
SLATE





BORDEAUX



GREEN

WWW.LINIEDESIGN.COM

*Model* AKINORI

*Quality* HANDLOOM

*Surface composition* 100% VISCOSE

*Fringes* NO

*Sizes (cm)* 140/200, 170/240, 200/300



AKINORI

BORDEAUX



BEIGE



GREY



MIDNIGHT



OCHRE



SLATE



STONE



WINE

WWW.LINIEDESIGN.COM

*Model* ALMERIA

*Quality* HANDLOOM

*Surface composition* 100% VISCOSE

*Fringes* YES

*Sizes (cm)* 140/200, 170/240, 200/300, 250/350



ALMERIA

MIDNIGHT



GREY



HEATHER



LEAF



MUSTARD

WWW.LINIEDESIGN.COM

Model **AMBROSIA**  
Quality **HANDLOOM**  
Surface composition **100% VISCOSE**  
Fringes **NO**  
Sizes (cm) **140/200, 170/240, 200/300**

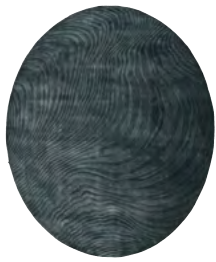


# AMBROSIA

LEAF



EARTH



FOREST



HEATHER



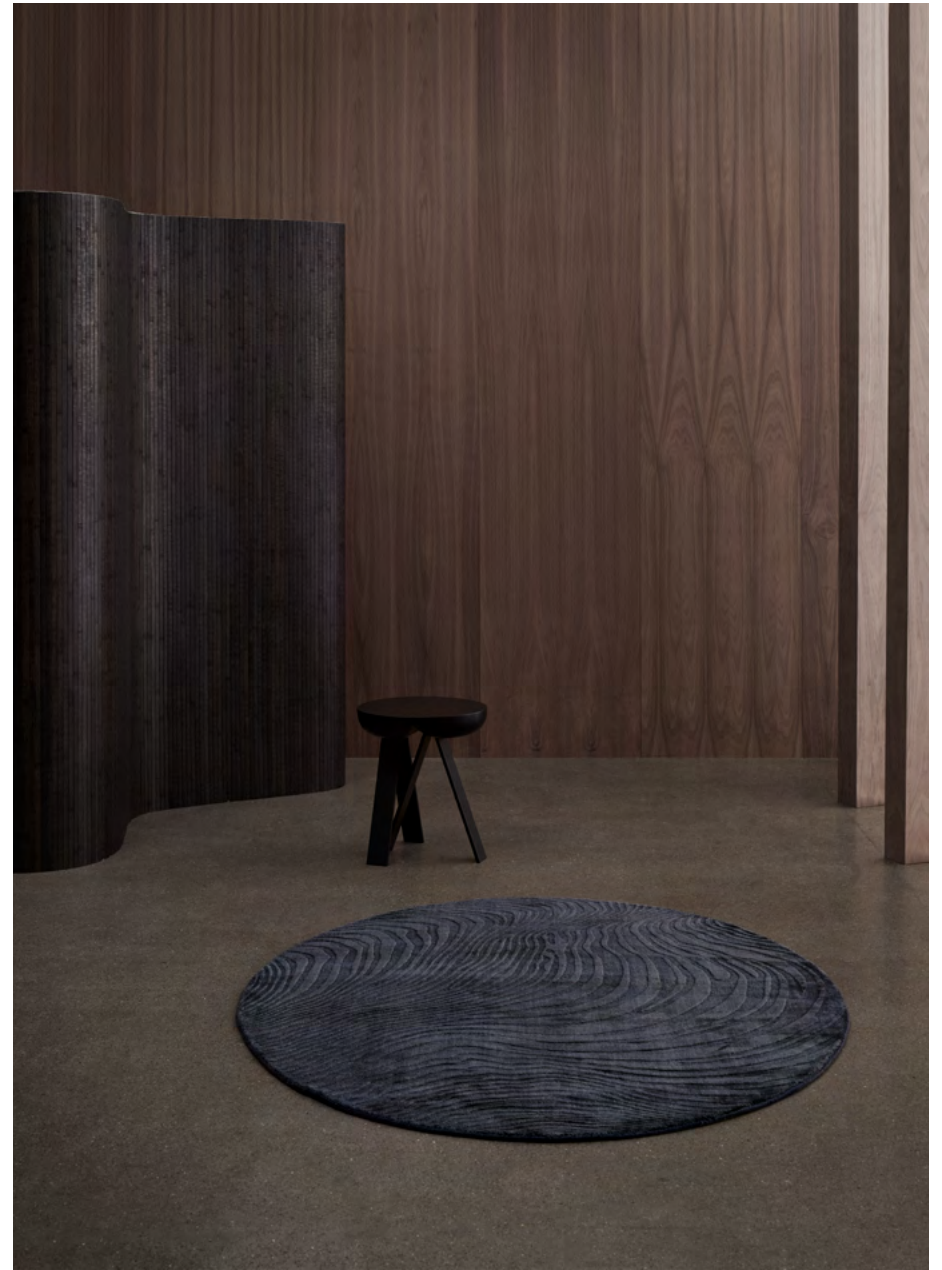
OCEAN



OCHRE

WWW.LINIEDESIGN.COM

*Model* ANONG  
*Quality* HANDLOOM  
*Surface composition* 100% VISCOSE  
*Fringes* NO  
*Sizes (cm)* 140/170



ANONG  
OCEAN



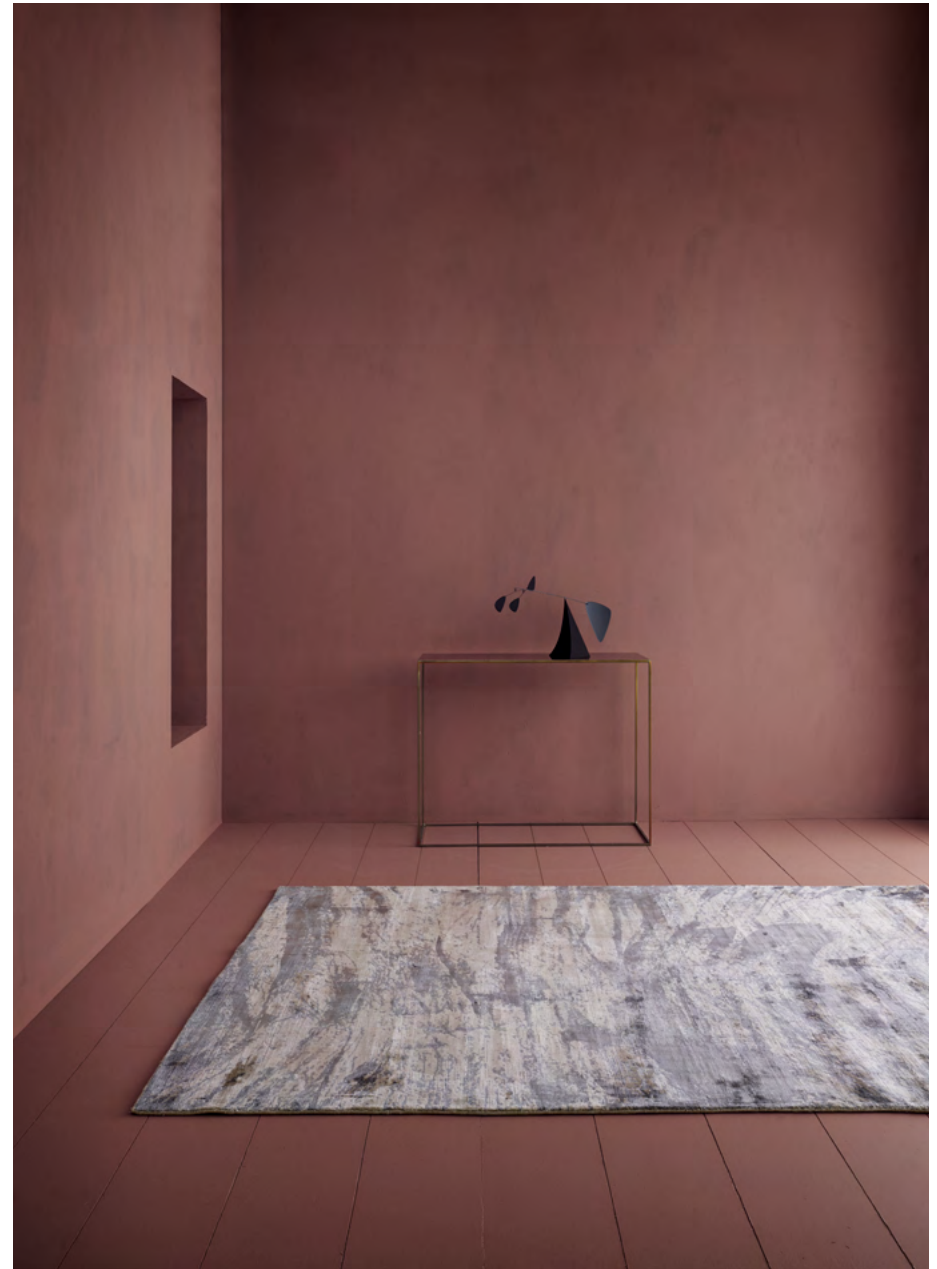
GRANITE



SILVER

WWW.LINIEDESIGN.COM

*Model* ARTIST  
*Quality* HANDLOOM  
*Surface composition* 100% VISCOSE  
*Fringes* NO  
*Sizes (cm)* 140/200, 170/240, 200/300



ARTIST  
SILVER



BORDEAUX



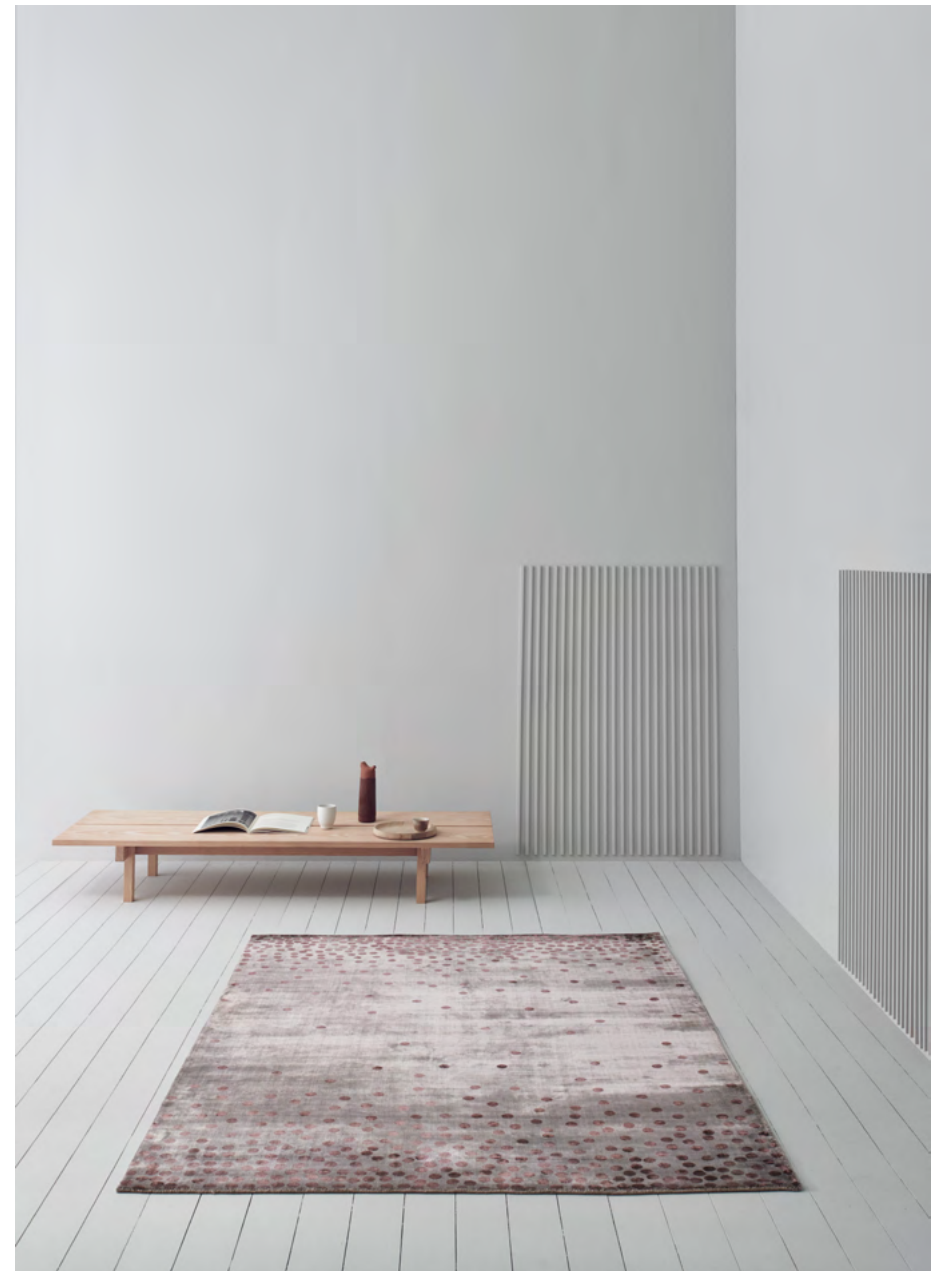
CACTUS



OCHRE

WWW.LINEIDESIGN.COM

*Model* DOTTO  
*Quality* HANDLOOM  
*Surface composition* 100% VISCOSE  
*Fringes* NO  
*Sizes (cm)* 140/200, 170/240, 200/300



**DOTTO**  
BORDEAUX



GREEN



NAVY



OCHRE



SILVER



WINE

WWW.LINEDESIGN.COM

*Model* DUETTO

*Quality* HANDLOOM

*Surface composition* 100% VISCOSE

*Fringes* NO

*Sizes (cm)* 140/200, 160/230



# DUETTO

GREEN/WINE/OCHRE



BLUE



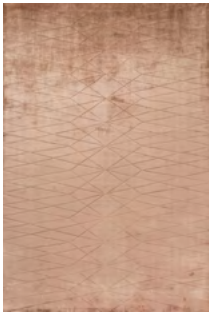
BOURDEAUX



GREEN



GREY



WINE

WWW.LINIEDESIGN.COM

*Model* EDGE  
*Quality* HANDLOOM  
*Surface composition* 100% VISCOSE  
*Fringes* NO  
*Sizes (cm)* 140/200, 170/240, 200/300



**EDGE**  
WINE





DK GREY



HEATHER



PETROL

WWW.LINIEDESIGN.COM

*Model* FINESTRA

*Quality* HANDLOOM

*Surface composition* 50% WOOL, 50% VISCOSE

*Fringes* YES

*Sizes (cm)* 140/200, 170/240, 200/300

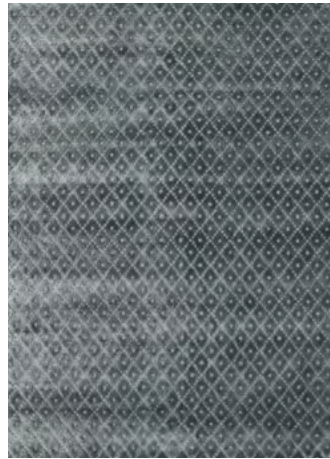


**FINESTRA**

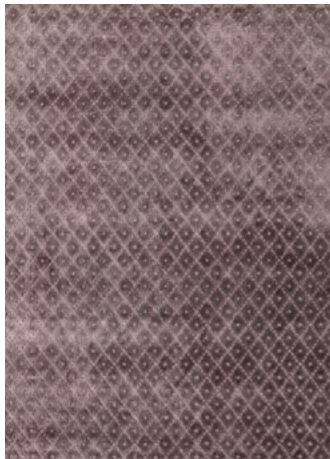
PETROL



BLUE



GREEN



HEATHER



OCHRE

WWW.LINIEDESIGN.COM

*Model* LIVIA  
*Quality* HANDLOOM  
*Surface composition* 100% VISCOSE  
*Fringes* NO  
*Sizes (cm)* 140/200, 170/240, 200/300



LIVIA  
GREEN



BORDEAUX



CACTUS



MIDNIGHT



MUSTARD



STEEL

WWW.LINEIDESIGN.COM

*Model* MOMENTO  
*Quality* HANDLOOM  
*Surface composition* 100% VISCOSE  
*Fringes* NO  
*Sizes (cm)* 140/170



# MOMENTO

MUSTARD



BLUE



STONE

WWW.LINIEDESIGN.COM

*Model* PENNELLO  
*Quality* HANDLOOM  
*Surface composition* 100% VISCOSE  
*Fringes* NO  
*Sizes (cm)* 170/240, 200/300



**PENNELLO**

STONE



AQUA



SILVER

WWW.LINIEDESIGN.COM

*Model* SHIMO

*Quality* HANDLOOM

*Surface composition* 100% VISCOSE

*Fringes* NO

*Sizes (cm)* 140/200, 170/240, 200/300

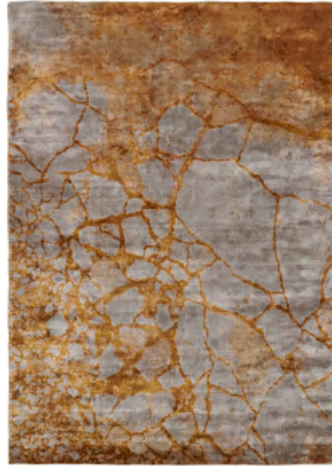


SHIMO

SILVER



EARTH



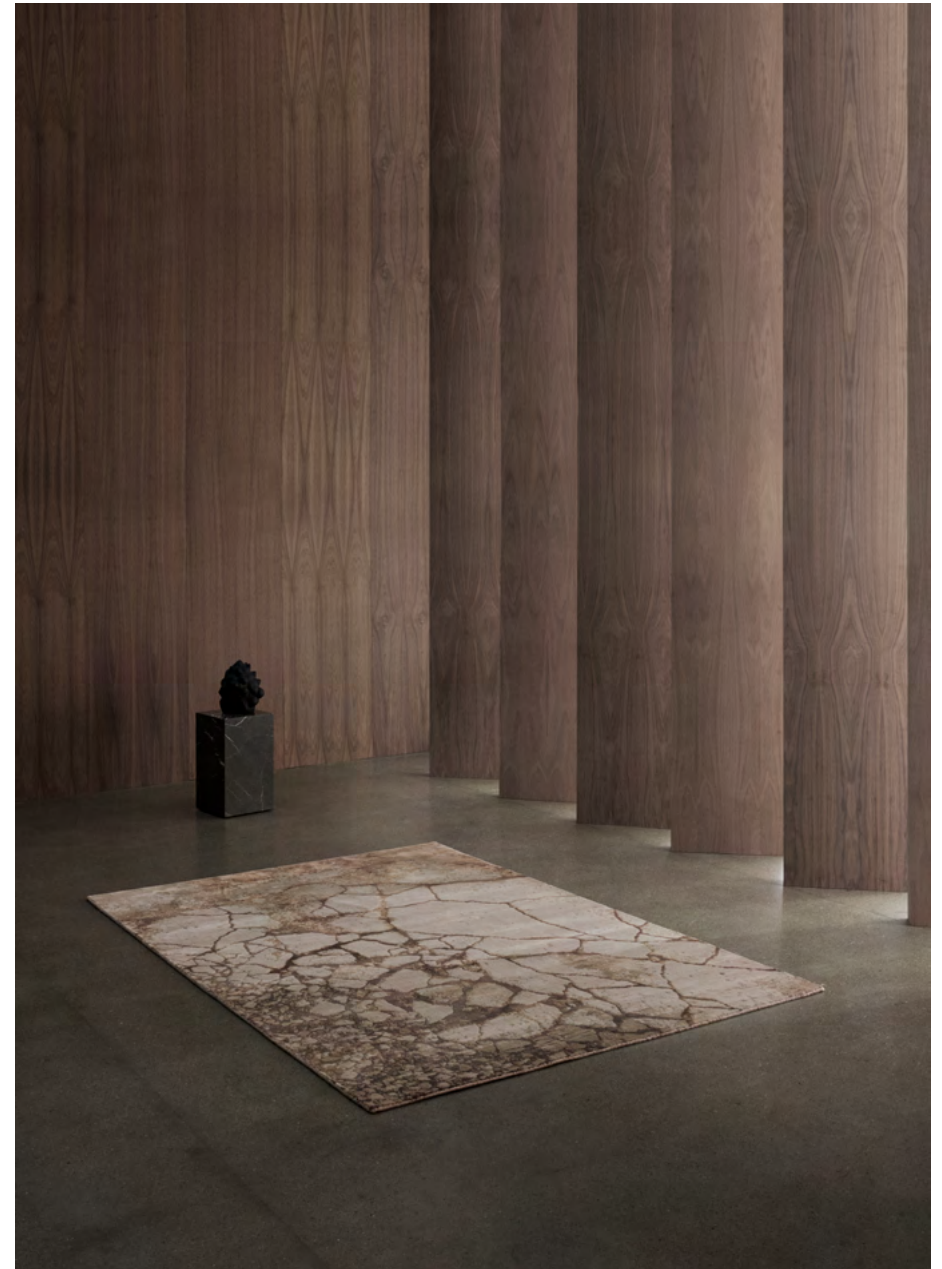
OCHRE



PETROL

WWW.LINIEDESIGN.COM

*Model* TOSKA  
*Quality* HANDLOOM  
*Surface composition* 100% VISCOSE  
*Fringes* NO  
*Sizes (cm)* 140/200, 170/240, 200/300



**TOSKA**  
EARTH



BLUE



HEATHER



OCHRE



PLUM

WWW.LINIEDESIGN.COM

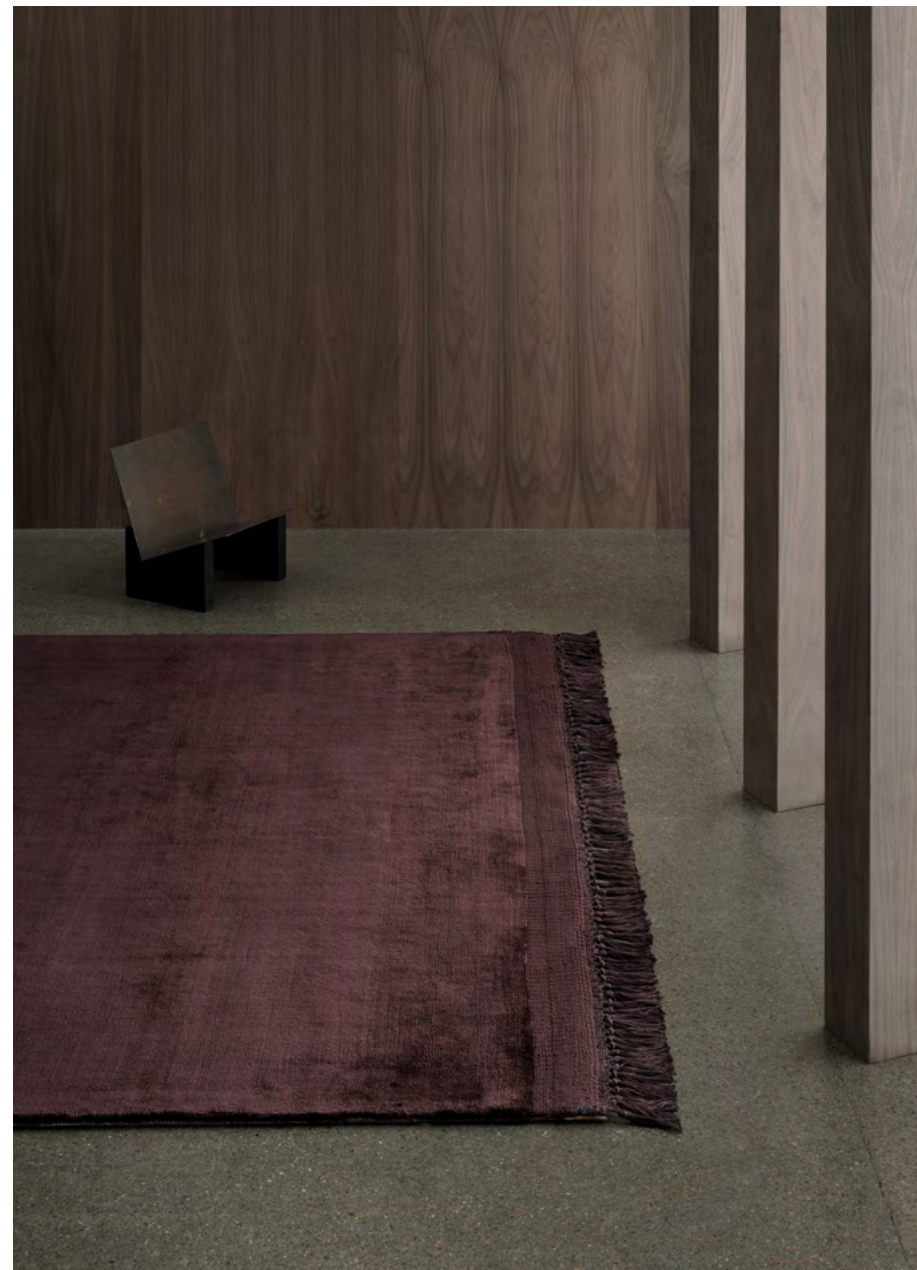
*Model* VALENCE

*Quality* HANDLOOM

*Surface composition* 100% VISCOSE

*Fringes* YES

*Sizes (cm)* 140/200, 170/240, 200/300

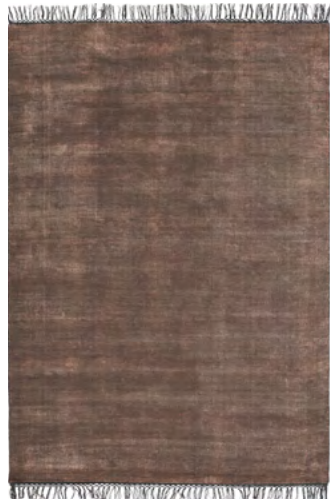


VALENCE

PLUM



BEIGE



CORAL



LIME

WWW.LINEDESIGN.COM

*Model* VIESTA

*Quality* HANDLOOM

*Surface composition* 50% WOOL, 50% VISCOSE

*Fringes* YES

*Sizes (cm)* 170/240, 200/300



**VIESTA**  
CORAL



# HAND— TUFTED

Our collection of hand-tufted rugs is made using an ancient technique that creates a characteristic appearance and feels luxurious underfoot. Skilled craftsmen use a 'tufting gun' to insert the pile into a cloth foundation, creating a looped pile that can subsequently be sheared, bevelled or left intact. This process creates endless creative possibilities for developing rugs with piles of different heights, contrasting loops and visual depth, which are combined with our unique patterns and colours for optimal effect.

Whether you prefer a statement rug that expresses your personality or a more refined design in muted hues, our hand-tufted rugs offer a softness and durability that will enhance any living space.





COMBI



MULTI



PASTEL

WWW.LINEIDESIGN.COM

Model ALTON

Quality HAND-TUFTED

Surface composition 80% WOOL, 20% VISCOSE

Fringes NO

Sizes (cm) 140/200, 170/240, 200/300



ALTON

COMBI



BORDEAUX



OCHRE

WWW.LINIEDESIGN.COM

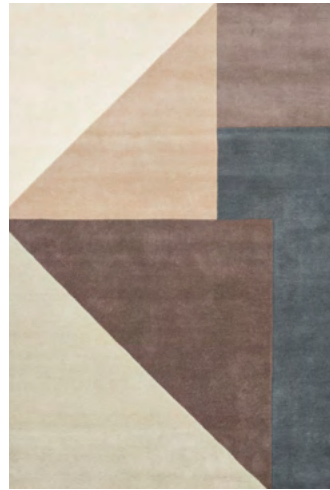
*Model* ARCO  
*Quality* HAND-TUFTED  
*Surface composition* 70% WOOL, 30% VISCOSE  
*Fringes* NO  
*Sizes (cm)* 140/200, 170/240, 200/300



**ARCO**  
BORDEAUX



COMBI



MIXED



MULTI



ROSE

WWW.LINIEDESIGN.COM

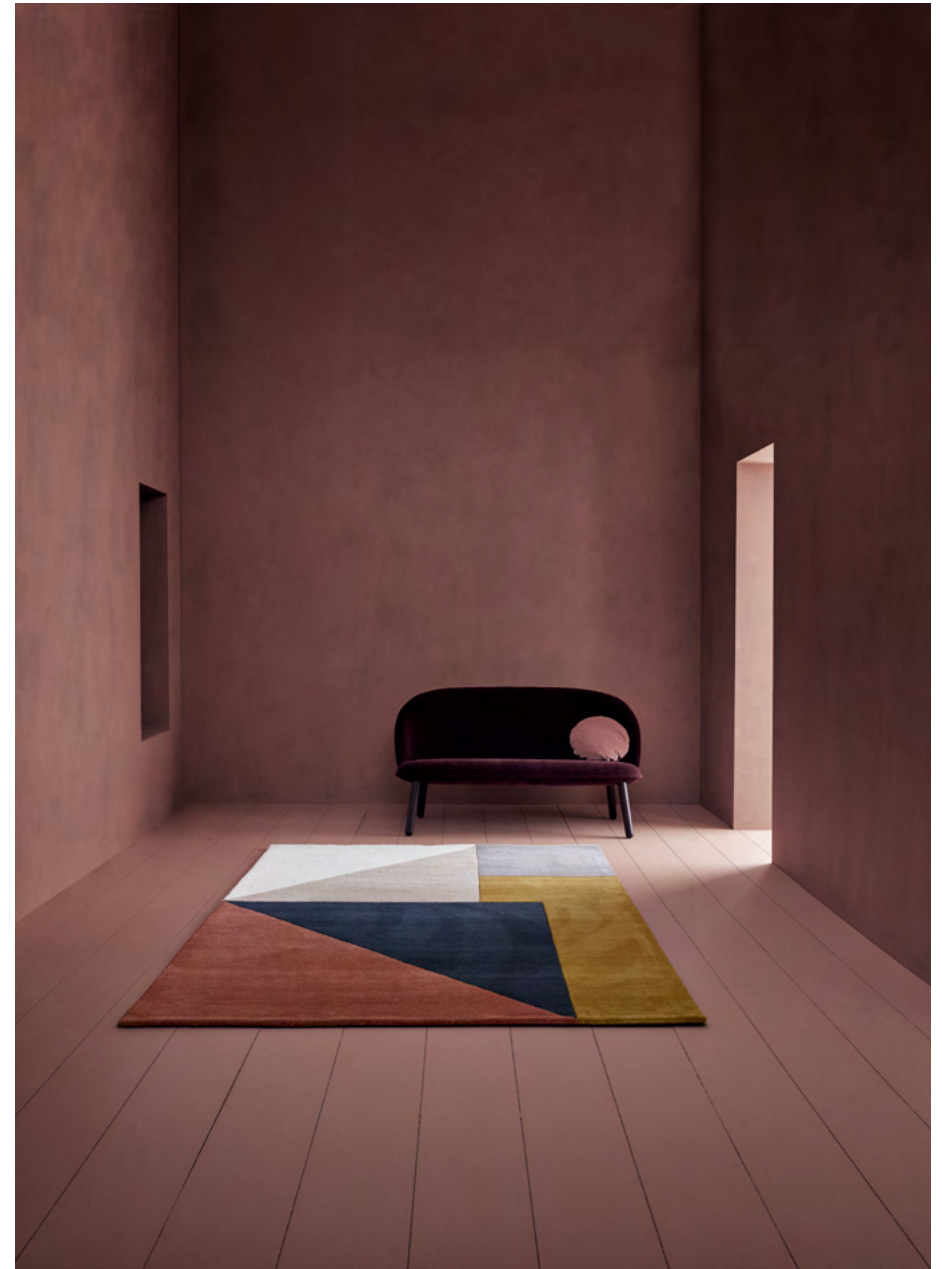
*Model* ARGUTO

*Quality* HAND-TUFTED

*Surface composition* 100% WOOL

*Fringes* NO

*Sizes (cm)* 140/200, 170/240, 200/300, 250/350

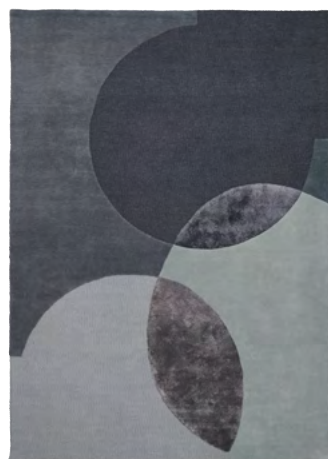


# ARGUTO

MULTI



CACTUS



INDIGO



MUSTARD

*Model* CALDERA

*Quality* HAND-TUFTED

*Surface composition* 75% WOOL, 25% VISCOSE

*Fringes* NO

*Sizes (cm)* 140/200, 170/240, 200/300

WWW.LINEDESIGN.COM



**CALDERA**

MUSTARD



GREEN



MUSTARD



POWDER

WWW.LINEDESIGN.COM

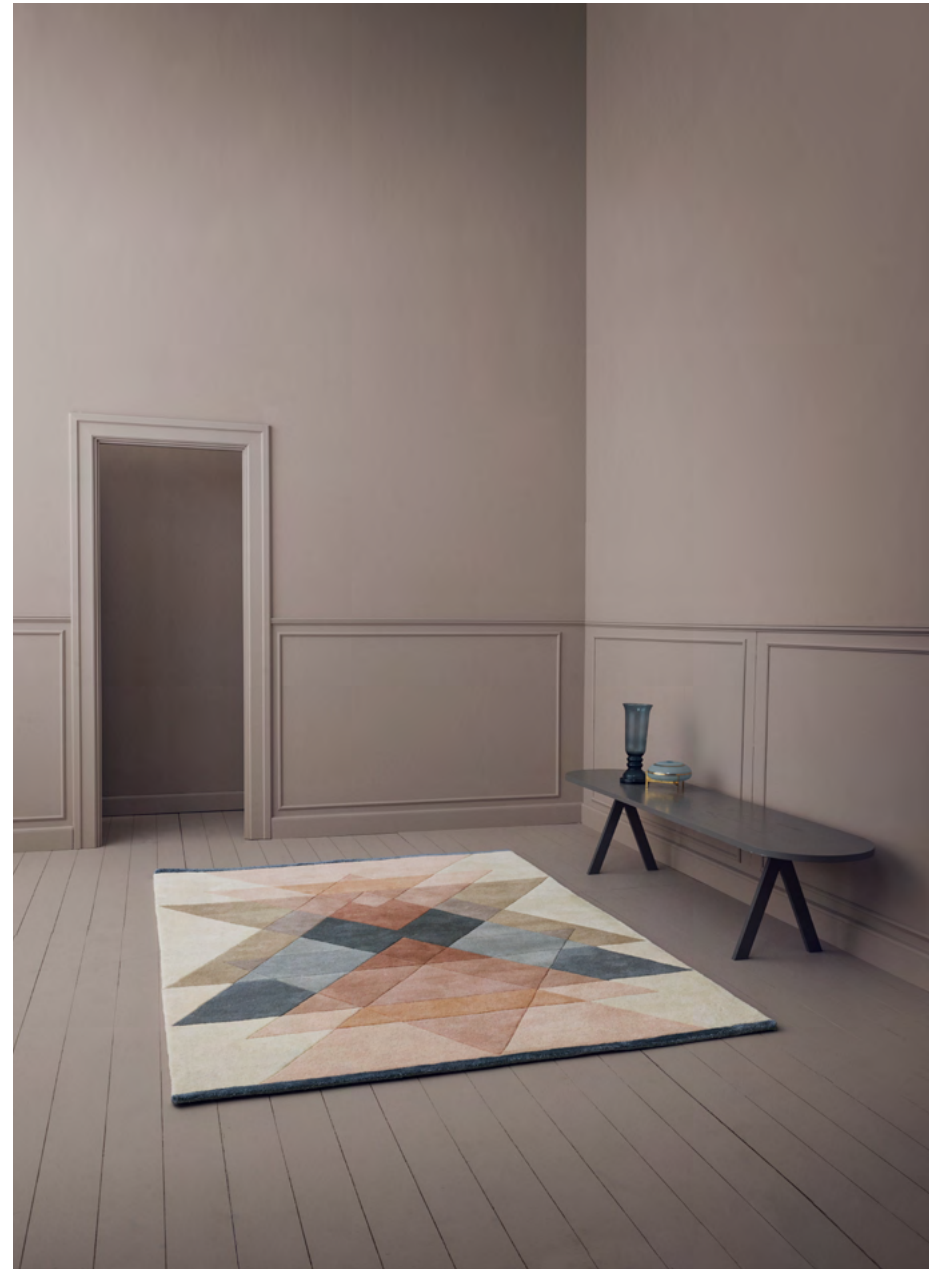
*Model* FREYA

*Quality* HAND-TUFTED

*Surface composition* 95% WOOL, 5% VISCOSE

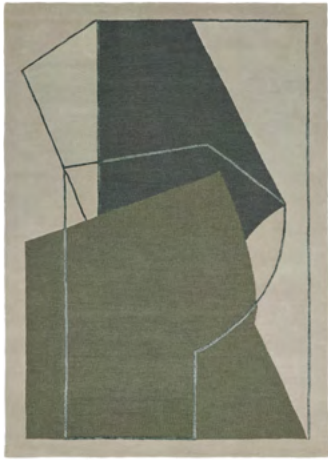
*Fringes* NO

*Sizes (cm)* 140/200, 170/240, 200/300

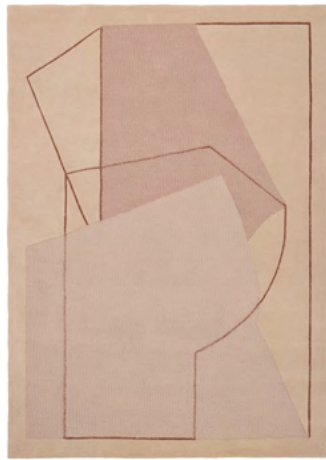


**FREYA**

POWDER



MOSS



ROSE



YELLOW

WWW.LINEDESIGN.COM

*Model* FURBO

*Quality* HAND-TUFTED

*Surface composition* 90% WOOL, 10% VISCOSE

*Fringes* NO

*Sizes (cm)* 140/200, 170/240, 200/300



**FURBO**

ROSE



MUSTARD



OCEAN



ORANGE

WWW.LINIEDESIGN.COM

*Model* MAGARI

*Quality* HAND-TUFTED

*Surface composition* 95% WOOL, 5% VISCOSE

*Fringes* NO

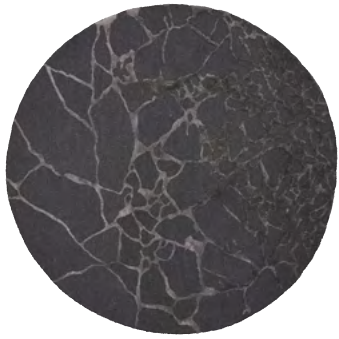
*Sizes (cm)* 140/200, 170/240, 200/300



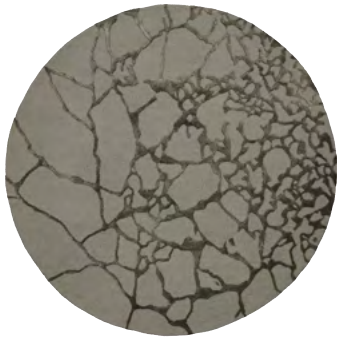
# MAGARI

ORANGE

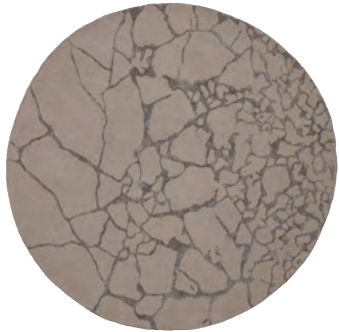




CHARCOAL



GREEN



STONE

WWW.LINEIDESIGN.COM

*Model* MARMO

*Quality* HAND-TUFTED

*Surface composition* 70% WOOL, 30% VISCOSE

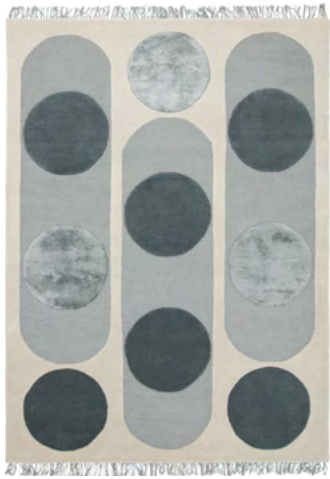
*Fringes* NO

*Sizes (cm)* 170Ø, 250Ø



**MARMO**

STONE



BLUE



YELLOW

WWW.LINEIDESIGN.COM

*Model* PUNTINO

*Quality* HAND-TUFTED

*Surface composition* 85% WOOL, 15% VISCOSE

*Fringes* YES

*Sizes (cm)* 140/200, 170/240, 200/300



PUNTINO

YELLOW



ANTHRACITE



AQUA



GREEN



MUSTARD



ROSE

WWW.LINIEDESIGN.COM

Model SATOMI

Quality HAND-TUFTED

Surface composition 95% WOOL, 5% VISCOSE

Fringes NO

Sizes (cm) 140/200, 170/240, 200/300



SATOMI

AQUA



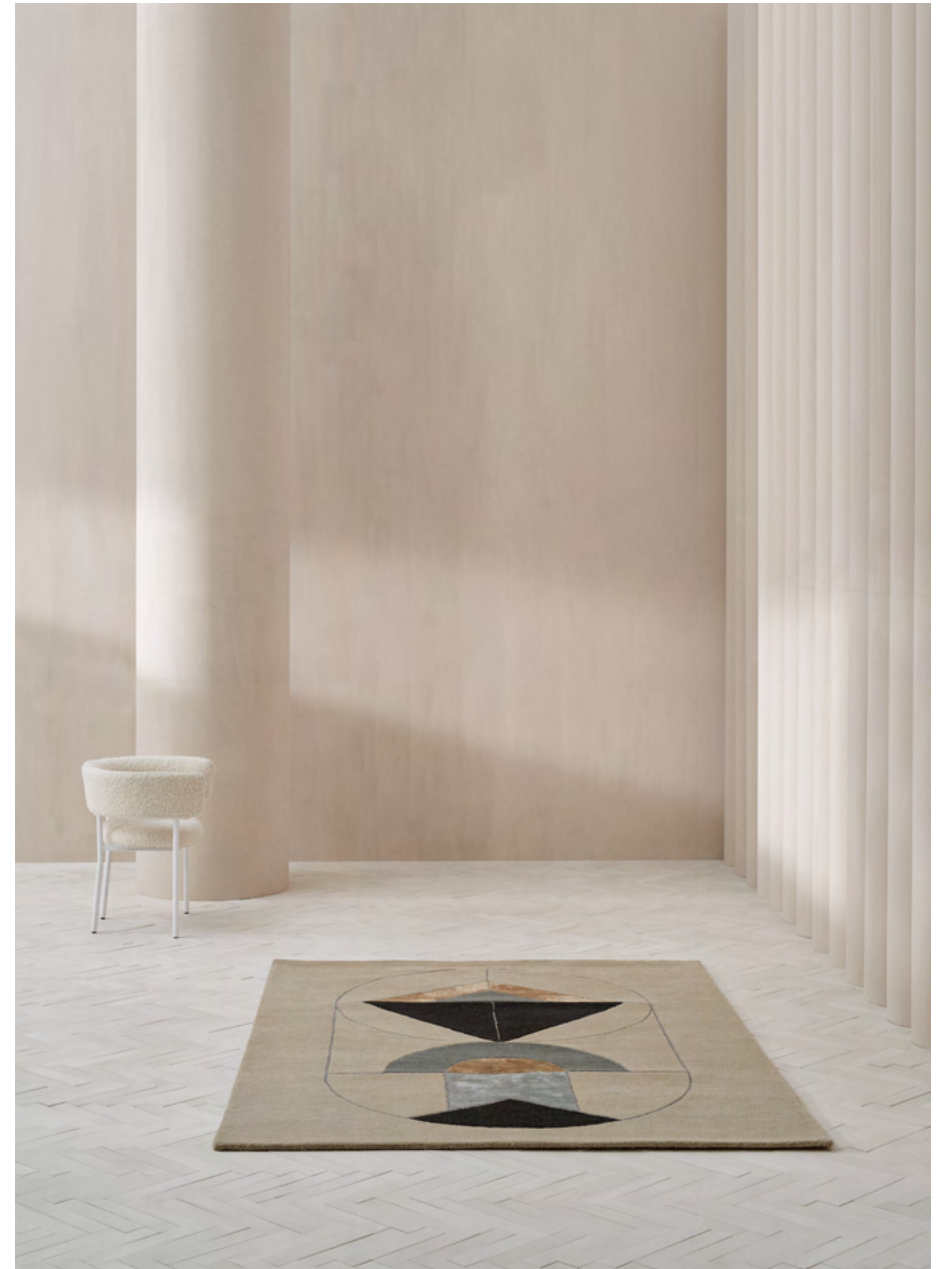
COMBI



MULTI

WWW.LINEIDESIGN.COM

*Model* SUAY  
*Quality* HAND-TUFTED  
*Surface composition* 85% WOOL, 15% VISCOSE  
*Fringes* NO  
*Sizes (cm)* 140/200, 170/240, 200/300



**SUAY**  
MULTI



BEIGE



GREY

WWW.LINEIDESIGN.COM

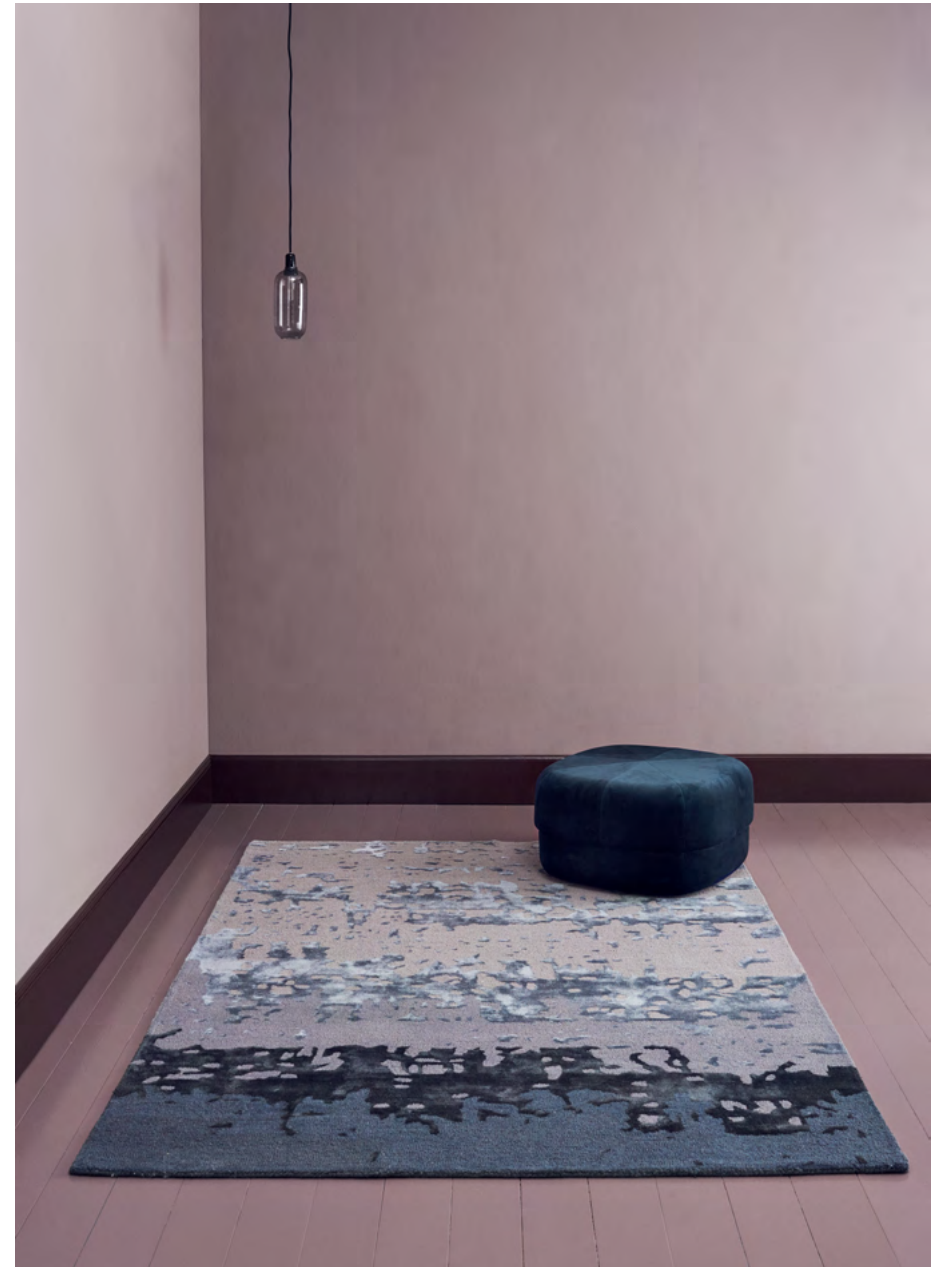
*Model* VARESE

*Quality* HAND-TUFTED

*Surface composition* 60% WOOL, 40% VISCOSE

*Fringes* NO

*Sizes (cm)* 140/200, 170/240, 200/300, 250/350



VARESE

GREY



BORDEAUX



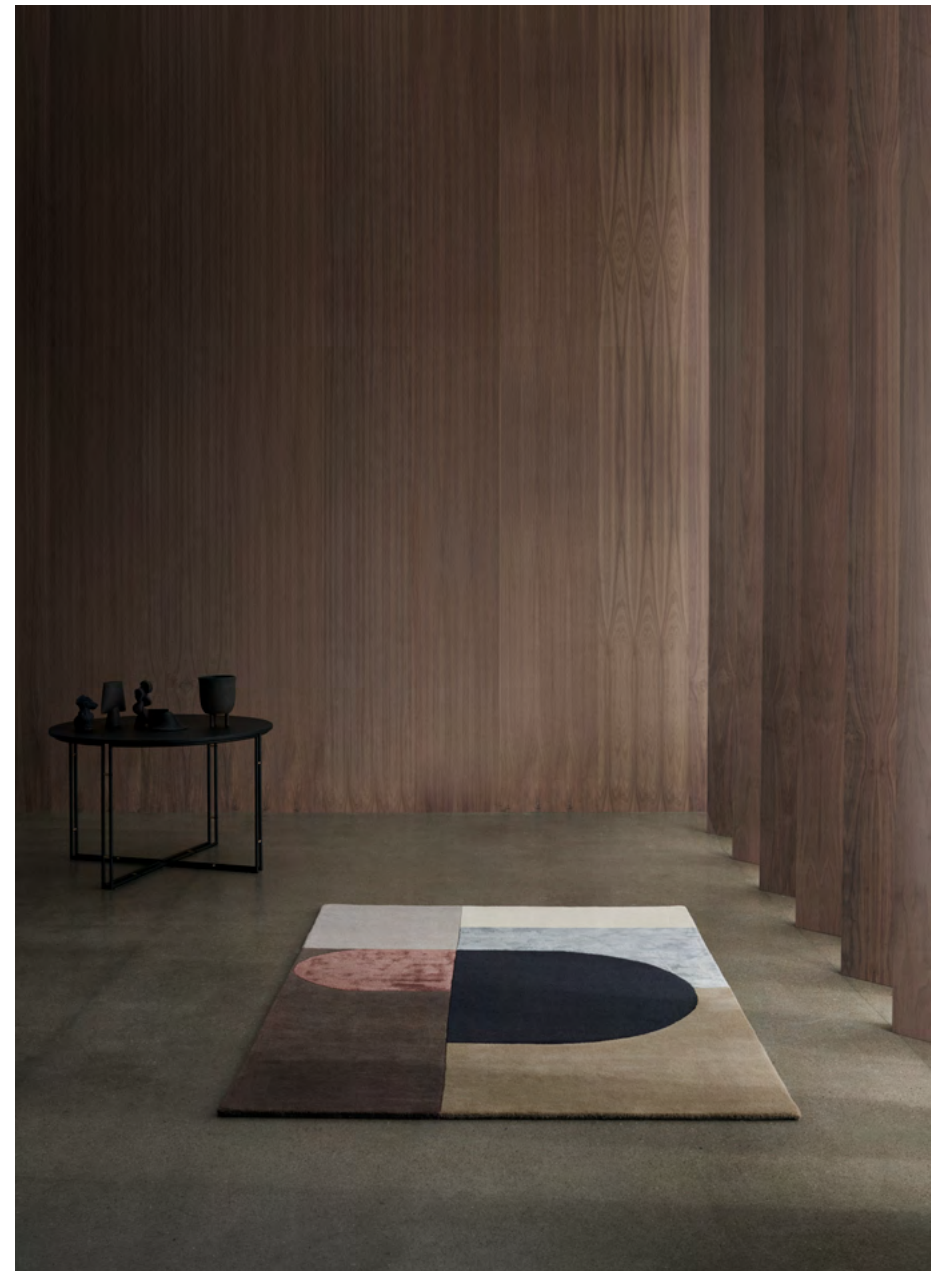
GREEN



MUSTARD

WWW.LINEIDESIGN.COM

Model VILJA  
Quality HAND-TUFTED  
Surface composition 75% WOOL, 25% VISCOSE  
Fringes NO  
Sizes (cm) 140/200, 170/240, 200/300



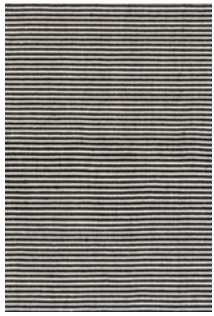
VILJA  
BORDEAUX

# HAND — WOVEN

Our hand-woven rugs take you on a global journey from the place where they are intricately crafted in India, to the minimalistic patterns and well-considered graphics of their Danish design. Welcome to an inspirational world where weavers use their skilled hands to operate looms, interlacing the separate threads to produce an almost endless variety of designs and structures.

Flat-woven rugs use artisan techniques steeped in tradition that add different textures, dimensions and expressions to the weave. Our extensive range includes bright colours and bold patterns that create a contemporary mood, while neutral shades and discreet geometric designs add a more timeless feel.

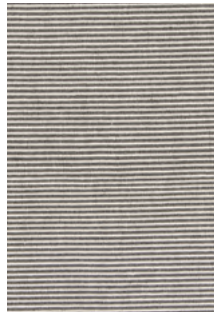




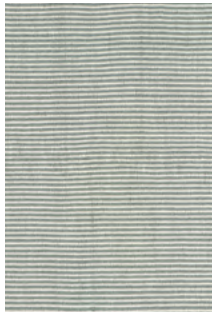
BLACK



DK BLUE



GREY



LT BLUE



SILVER



YELLOW

WWW.LINEDESIGN.COM

Model AJO  
 Quality HAND-WOVEN  
 Surface composition 100% WOOL  
 Fringes NO  
 Sizes (cm) 140/200, 160/230, 200/300



AJO  
 BLACK





GREY



LT GREY

WWW.LINEDESIGN.COM

*Model* ARCTIC

*Quality* HAND-WOVEN

*Surface composition* 100% WOOL

*Fringes* NO

*Sizes (cm)* 140/200, 170/240, 200/300



ARCTIC

LT GREY



CHARCOAL



LT GREY

WWW.LINIEDESIGN.COM

*Model* ARDESIA

*Quality* HAND-WOVEN

*Surface composition* 100% WOOL

*Fringes* NO

*Sizes (cm)* 140/200, 160/230, 200/300

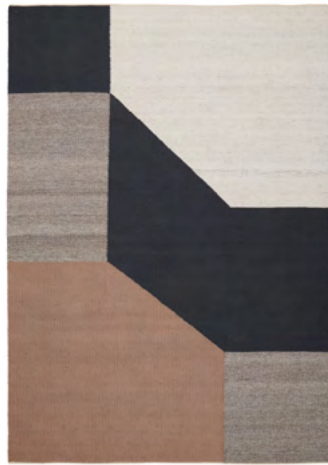


ARDESIA

LT GREY



AQUA



POWDER



SKY

WWW.LINEIDESIGN.COM

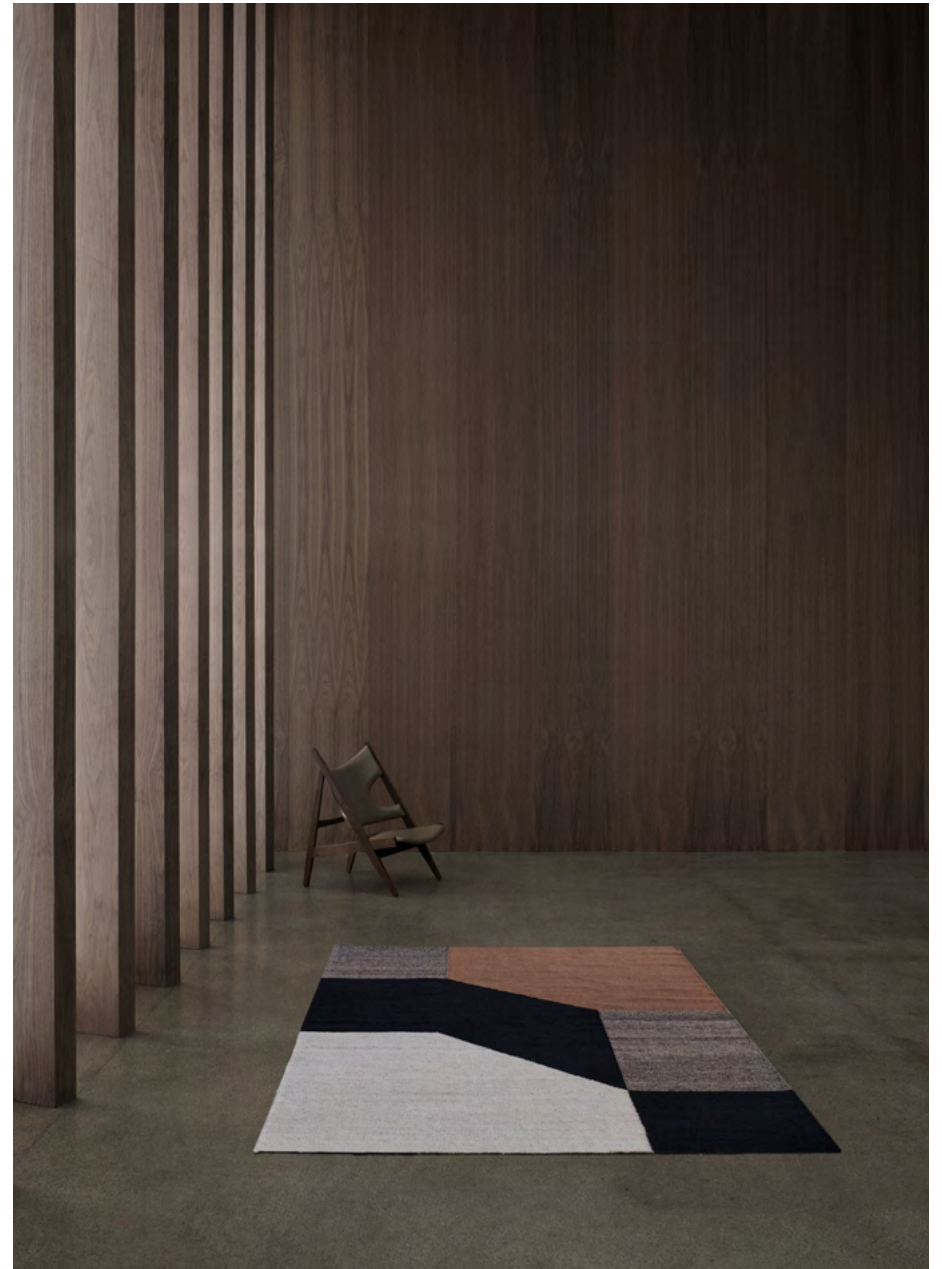
*Model* BLOCCHI

*Quality* HAND-WOVEN

*Surface composition* 50% WOOL, 50% VISCOSE

*Fringes* NO

*Sizes (cm)* 140/200, 170/240, 200/300



**BLOCCHI**

POWDER



BLACK



METAL



NATURAL

*Model* BURANO

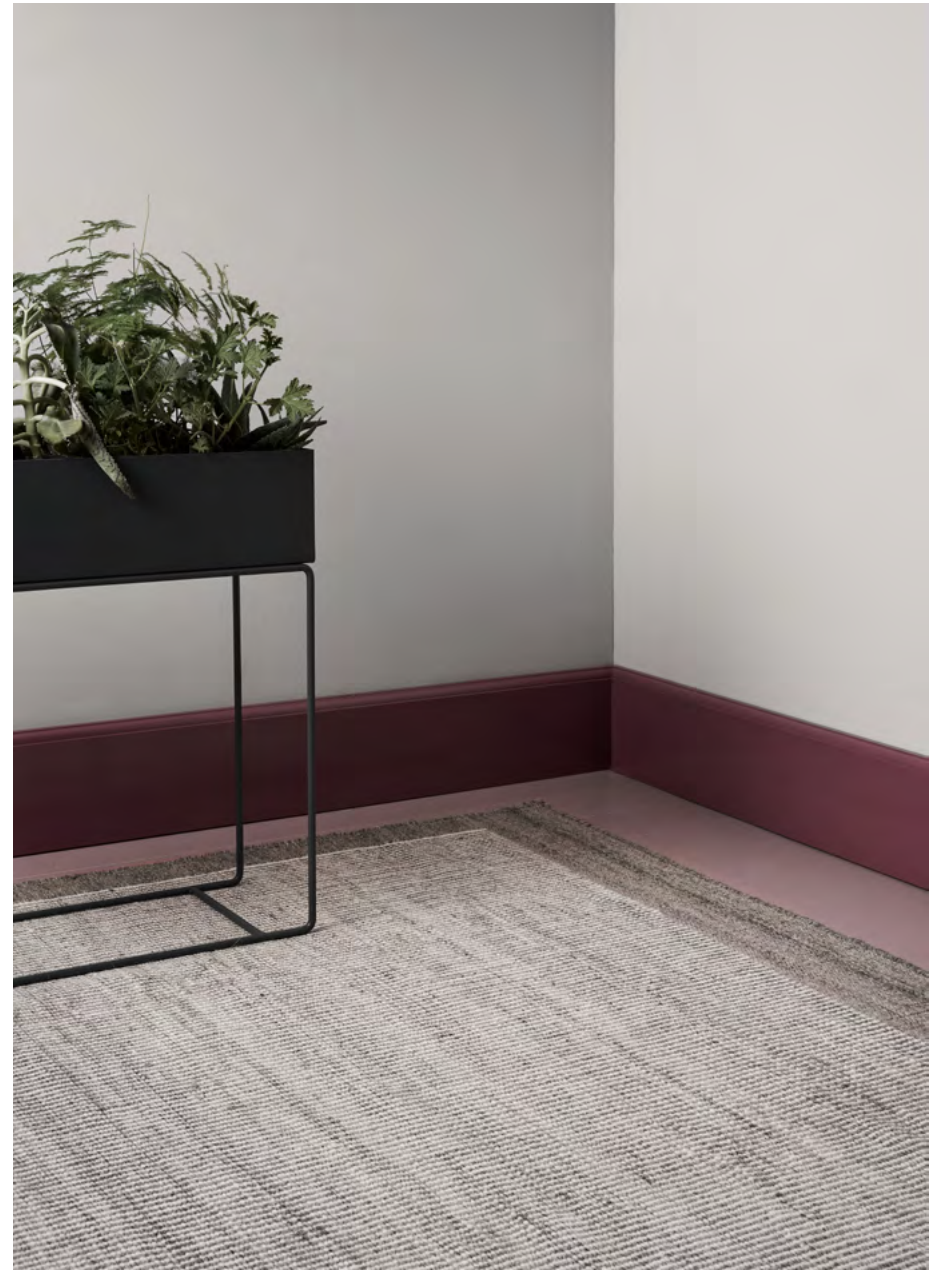
*Quality* HAND-WOVEN

*Surface composition* 100% WOOL

*Fringes* NO

*Sizes (cm)* 140/200, 170/240, 200/300, 250/350

WWW.LINEDESIGN.COM



**BURANO**

METAL



GRANITE



GREY

WWW.LINIEDESIGN.COM

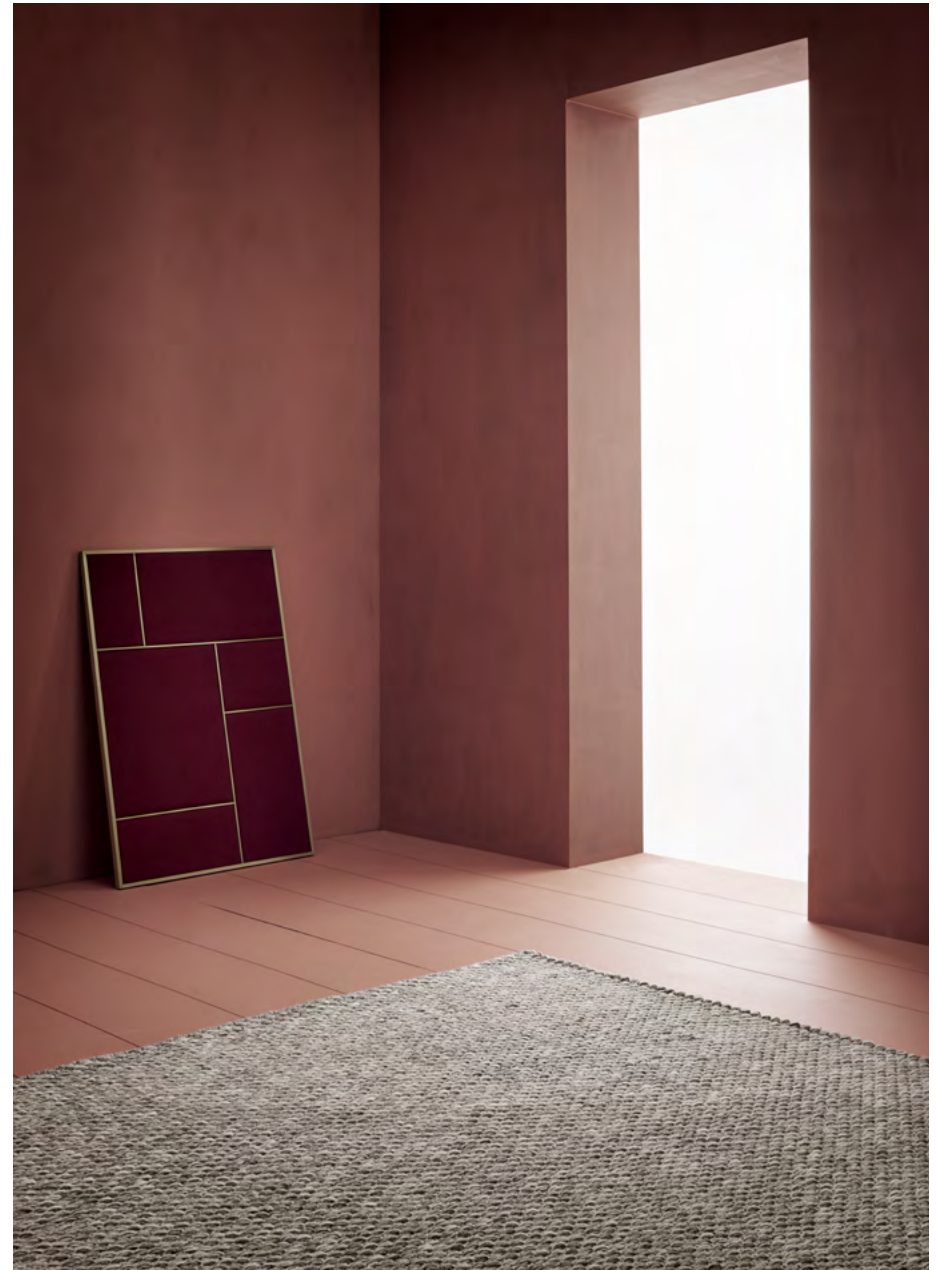
*Model* CALDO

*Quality* HAND-WOVEN

*Surface composition* 100% WOOL

*Fringes* NO

*Sizes (cm)* 140/200, 160/230, 200/300



CALDO

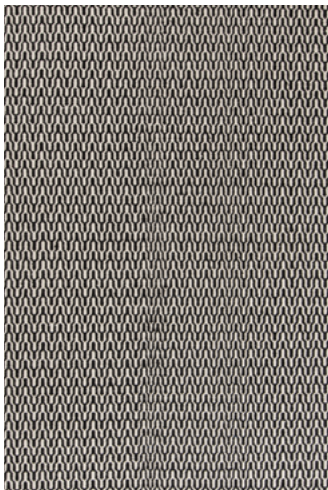
GREY



AQUA



BEIGE



BLACK/WHITE



SMOKE

WWW.LINIEDESIGN.COM

*Model* CHARLES

*Quality* HAND-WOVEN

*Surface composition* 100% WOOL

*Fringes* NO

*Sizes (cm)* 140/200, 160/230, 200/300



# CHARLES

BLACK/WHITE



GREY



IVORY



STONE

*Model* CORDOBA

*Quality* HAND-WOVEN

*Surface composition* 100% WOOL

*Fringes* NO

*Sizes (cm)* 140/200, 160/230, 200/300

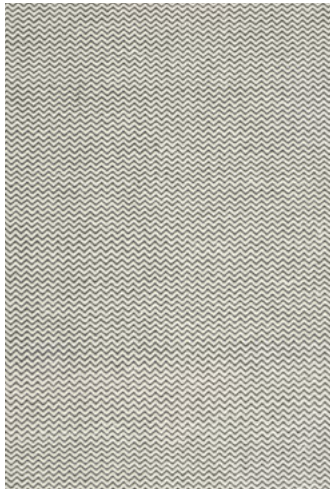


WWW.LINEDESIGN.COM

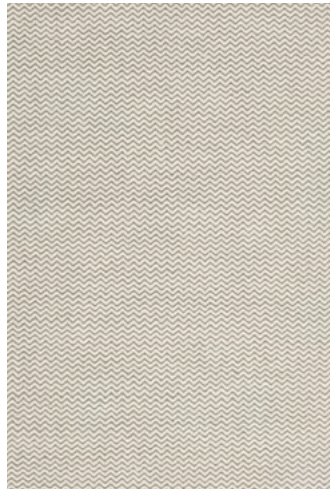


# CORDOBA

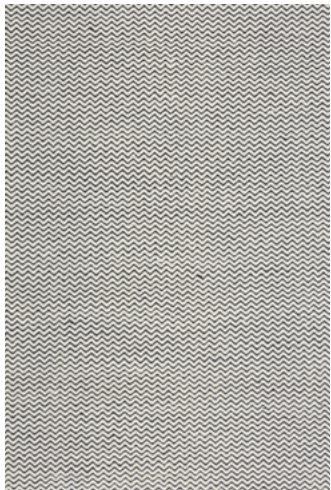
GREY



BLUE



LT GREY



NAVY

WWW.LINEDESIGN.COM

*Model* CORSA

*Quality* HAND-WOVEN

*Surface composition* 100% WOOL

*Fringes* NO

*Sizes (cm)* 140/200, 160/230, 200/300



**CORSA**  
LT GREY





DK GREEN



GREY



STONE

WWW.LINIEDESIGN.COM

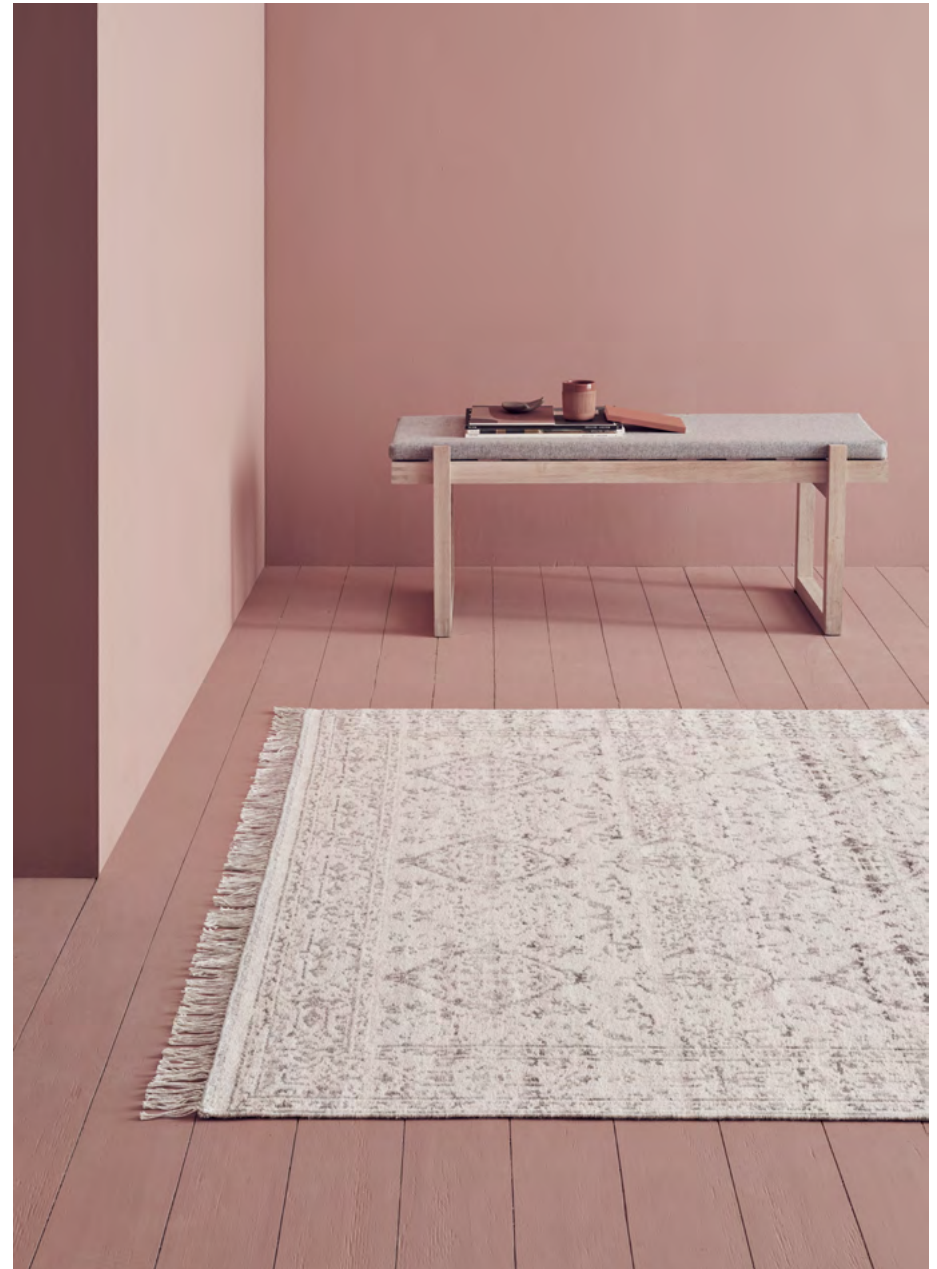
*Model* DOLZAGO

*Quality* HAND-WOVEN

*Surface composition* 100% WOOL

*Fringes* YES

*Sizes (cm)* 140/200, 170/240, 200/300, 250/350



# DOLZAGO

GREY



GREY



PETROL



STONE



WHITE

WWW.LINIEDESIGN.COM

*Model* FENJA

*Quality* HAND-WOVEN

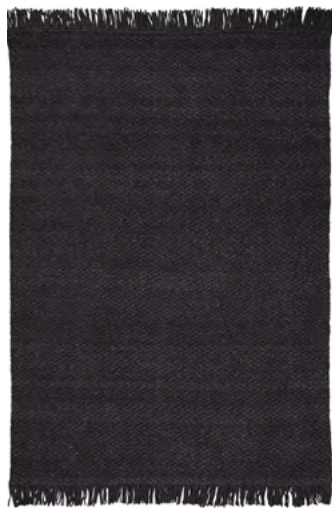
*Surface composition* 100% WOOL

*Fringes* YES

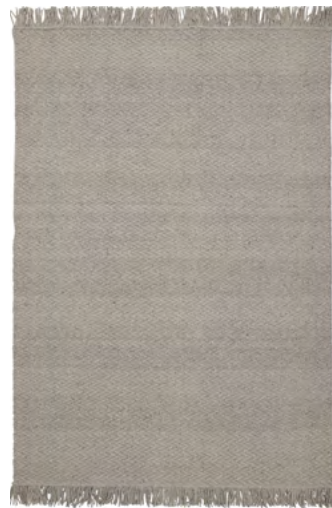
*Sizes (cm)* 140/200, 170/240, 200/300, 250/350



**FENJA**  
WHITE



CHARCOAL



LT. GREY



WHITE

*Model* IDUN

*Quality* HAND-WOVEN

*Surface composition* 70% WOOL, 30% POLYESTER

*Fringes* YES

*Sizes (cm)* 140/200, 170/240, 200/300

WWW.LINIEDESIGN.COM



**IDUN**

WHITE



BLUE



GREY



MUSTARD



OCEAN

WWW.LINIEDESIGN.COM

*Model* LAINA

*Quality* HAND-WOVEN

*Surface composition* 85% WOOL, 15% COTTON

*Fringes* NO

*Sizes (cm)* 140/200, 170/240, 200/300



**LAINA**  
MUSTARD



ANTHRACITE



CHARCOAL

WWW.LINEIDESIGN.COM

*Model* LIA

*Quality* HAND-WOVEN

*Surface composition* 100% WOOL

*Fringes* NO

*Sizes (cm)* 140/200, 170/240, 200/300



**LIA**  
ANTHRACITE



GREY

*Model* LIMPO

*Quality* HAND-WOVEN

*Surface composition* 100% WOOL

*Fringes* YES

*Sizes (cm)* 140/200, 170/240, 200/300



WWW.LINIEDESIGN.COM



LIMPO

GREY



SAND

*Model* MADERA

*Quality* HAND-WOVEN

*Surface composition* 100% JUTE

*Fringes* NO

*Sizes (cm)* 140/200, 160/230, 200/300



WWW.LINEIDESIGN.COM

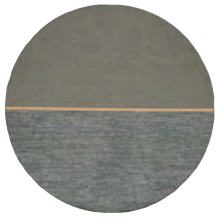


**MADERA**

SAND



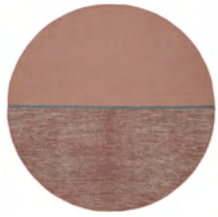
BLUE



GREEN



OCHRE



POWDER



STONE

WWW.LINEDESIGN.COM

*Model* MAGNETIZE

*Quality* HAND-WOVEN

*Surface composition* 98% WOOL, 2% POLYESTER

*Fringes* NO

*Sizes (cm)* 170Ø, 250Ø



# MAGNETIZE

GREEN





DK. GREEN



EARTH



MUSTARD



RUST

WWW.LINIEDESIGN.COM

*Model* METRI

*Quality* HAND-WOVEN

*Surface composition* 100% WOOL

*Fringes* NO

*Sizes (cm)* 140/200, 170/240, 200/300



# METRI

DK. GREEN



COMBI



GREY



MIXED



STONE

WWW.LINIEDESIGN.COM

*Model* MOLTENO

*Quality* HAND-WOVEN

*Surface composition* 60% WOOL, 40% VISCOSE

*Fringes* YES

*Sizes (cm)* 140/200, 170/240, 200/300



# MOLTENO

STONE



CHARCOAL



IVORY



SILVER



TAUPE

*Model* NELLY

*Quality* HAND-WOVEN

*Surface composition* 70% VISCOSE, 30% WOOL

*Fringes* NO

*Sizes (cm)* 140/200, 160/230, 200/300



WWW.LINEIDESIGN.COM



**NELLY**

SILVER



GREY



WHITE

WWW.LINIEDESIGN.COM

*Model* NYOKO

*Quality* HAND-WOVEN

*Surface composition* 100% WOOL

*Fringes* NO

*Sizes (cm)* 140/200, 170/240, 200/300, 250/350



**NYOKO**

WHITE



BLUE



MOUSE



PETROL

*Model* POMEZIA

*Quality* HAND-WOVEN

*Surface composition* 90% WOOL, 10% COTTON

*Fringes* NO

*Sizes (cm)* 140/200, 160/230, 200/300

WWW.LINEIDESIGN.COM



# POMEZIA

MOUSE



BLUE



GREY



MOSS



ROSE

WWW.LINEDESIGN.COM

*Model* REVELIN

*Quality* HAND-WOVEN

*Surface composition* 80% WOOL, 20% COTTON

*Fringes* NO

*Sizes (cm)* 80/250, 140/200, 160/230, 200/300



REVELIN

ROSE



CHARCOAL



GREY

WWW.LINIEDESIGN.COM

*Model* SIGRI  
*Quality* HAND-WOVEN  
*Surface composition* 80% WOOL, 20% NYLON  
*Fringes* NO  
*Sizes (cm)* 140/200, 170/240, 200/300



**SIGRI**  
CHARCOAL



MIXED



MOSS

WWW.LINIEDESIGN.COM

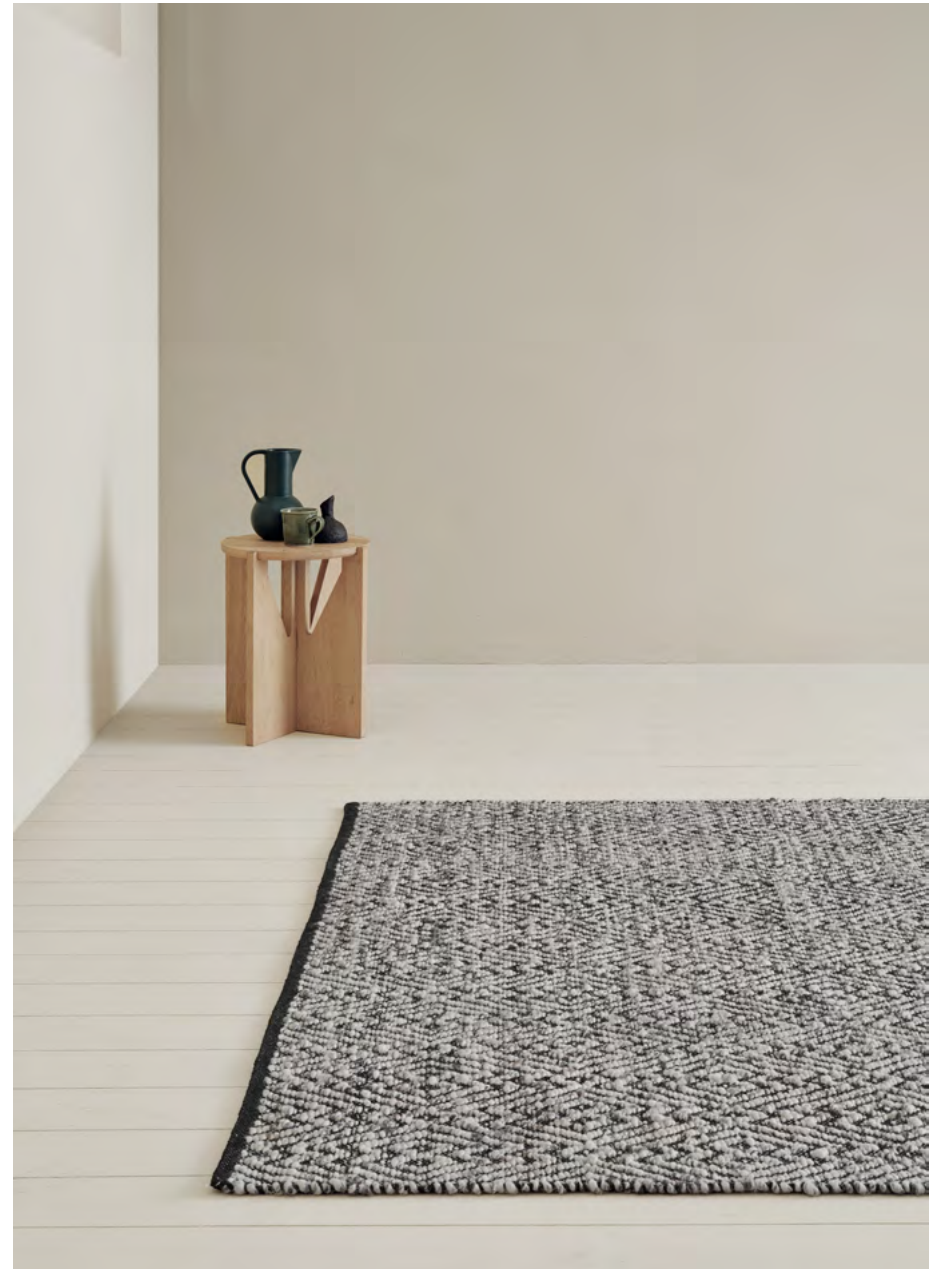
*Model* TIGRE

*Quality* HAND-WOVEN

*Surface composition* 70% WOOL, 30% COTTON

*Fringes* NO

*Sizes (cm)* 140/200, 170/240, 200/300



**TIGRE**

MIXED





ANTHRACITE



CHARCOAL



GREEN



GREY



WHITE

WWW.LINIEDESIGN.COM

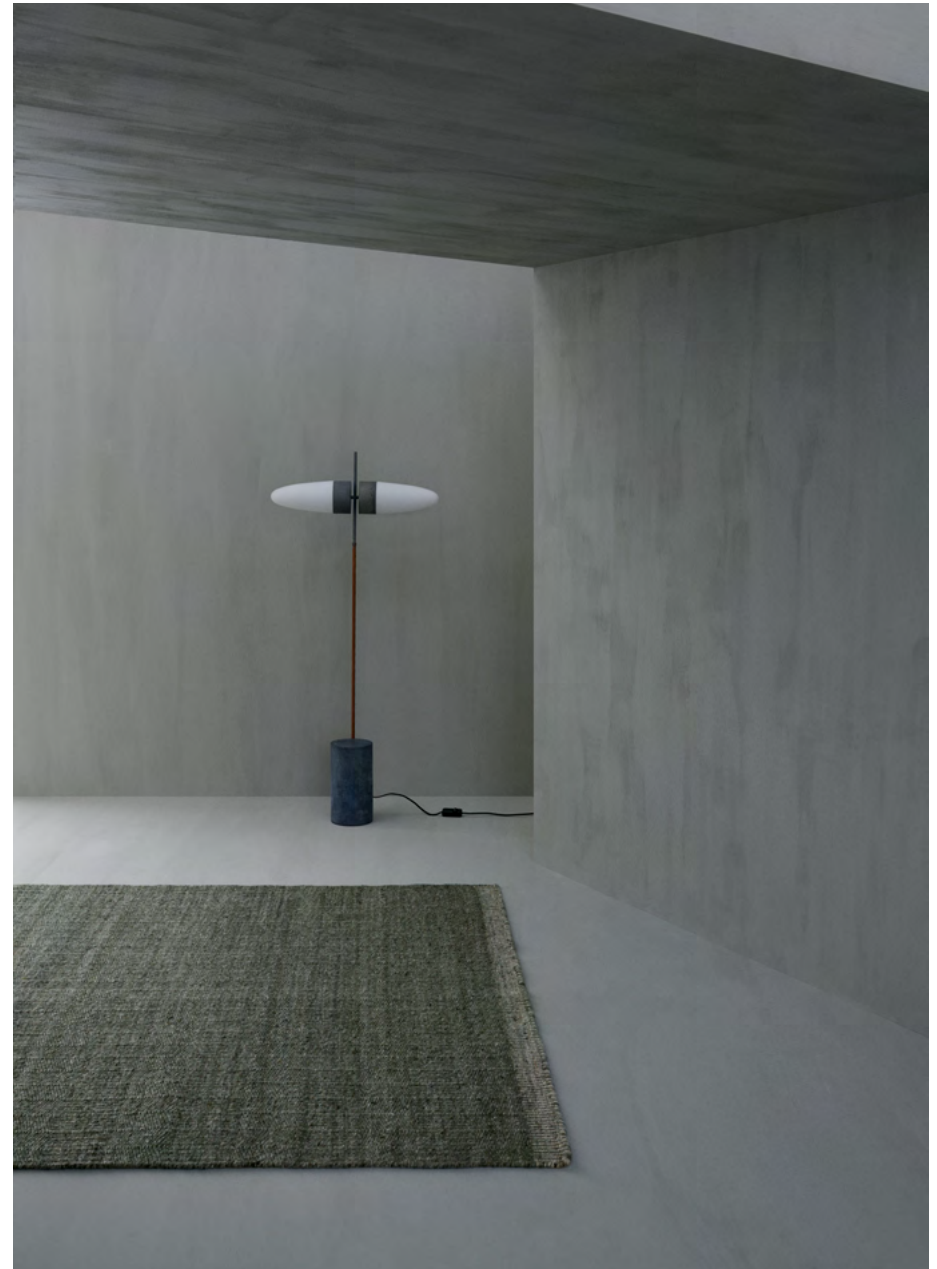
*Model* VERSANTI

*Quality* HAND-WOVEN

*Surface composition* 100% WOOL

*Fringes* NO

*Sizes (cm)* 140/200, 170/240, 200/300, 250/350



VERSANTI

GREEN

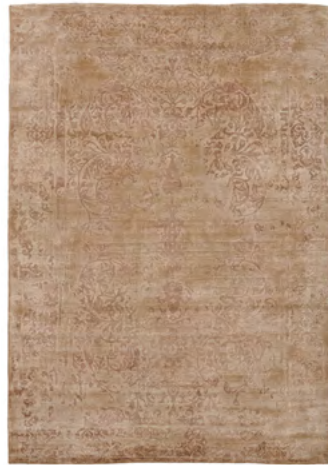
# LOOM— KNOTTED

Our loom-knotted rugs are made using a similar technique to handloom rugs, integrating the most skilled artisanship and weaving traditions with modern designs and creative technology. This ancient handmade technique enables our designers to explore a great variety of textures, patterns and colours, resulting in unique products that have a timeless appeal and are built to last. The use of silky viscose yarns and other durable manmade fibres accentuates intricate details and gives loom-knotted rugs a lustrous finish and soft handfeel, introducing a sense of quality and exclusivity to a room.





ANTHRACITE



GOLD



GREY

*Model* FLORENTINE

*Quality* LOOM-KNOTTED

*Surface composition* 50% WOOL, 50% VISCOSE

*Fringes* NO

*Sizes (cm)* 140/200, 170/240, 200/300

WWW.LINIEDESIGN.COM



# FLORENTINE

GOLD



CHARCOAL



SAND



SILVER

WWW.LINIEDESIGN.COM

*Model* FRIOLENTO

*Quality* LOOM-KNOTTED

*Surface composition* 60% VISCOSE, 40% WOOL

*Fringes* YES

*Sizes (cm)* 140/200, 170/240, 200/300



**FRIOLENTO**

SILVER



GREY



HEATHER



OCEAN

*Model* FULLER

*Quality* LOOM-KNOTTED

*Surface composition* 50% WOOL, 50% VISCOSE

*Fringes* NO

*Sizes (cm)* 140/200, 170/240, 200/300

WWW.LINIEDESIGN.COM



# FULLER

HEATHER



MIDNIGHT



SILVER

WWW.LINEIDESIGN.COM

*Model* KAITO  
*Quality* LOOM-KNOTTED  
*Surface composition* 100% VISCOSE  
*Fringes* NO  
*Sizes (cm)* 140/200, 170/240, 200/300, 250/350



**KAITO**  
SILVER



BLUE



GREY

WWW.LINIEDESIGN.COM

*Model* SELINI

*Quality* LOOM-KNOTTED

*Surface composition* 50% WOOL, 50% VISCOSE

*Fringes* NO

*Sizes (cm)* 140/200, 170/240, 200/300, 250/350



**SELINI**

BLUE

# POWER LOOM WOVEN

One of the main advantages of rugs woven on power looms is the production speed. Thanks to the large, computer-run machines, power-loomed rugs can be made more quickly than their handmade counterparts. Once the design, colours and yarn have been decided, the relevant information is fed to the computer, which then initiates production on the power loom.

Power-loomed rugs can be made in a wide variety of patterns, pile heights and densities, with the ability to recreate intricate graphic images and ensure a consistent and even finish.







CHARCOAL



NATURAL

WWW.LINIEDESIGN.COM

*Model* DINAS

*Quality* POWER LOOM WOVEN

*Surface composition* 55% SISAL, 45% JUTE  
WITH POLYESTER BORDER

*Fringes* NO

*Sizes (cm)* 133/190, 160/230, 200/300



**DINAS**  
CHARCOAL



LT GREY



NATURAL

WWW.LINEIDESIGN.COM

*Model* SILAS

*Quality* POWER LOOM WOVEN

*Surface composition* 100% SISAL WITH POLYESTER BORDER

*Fringes* NO

*Sizes (cm)* 133/190, 160/230, 200/300



**SILAS**  
NATURAL

# SHAG—PILE

A shag-pile rug is easily recognisable by its thick and distinctive pile that creates a luxuriously soft and textured surface. Available in a variety of quality and hardwearing fabrics from wool and cotton to manmade fibres, they can be designed in a myriad of different lengths, styles and finishes.

Super-soft and texturally alluring, the thick pile ensures warmth and plush comfort underfoot, as well as boosting your home with atmosphere or accenting a specific area in a room.





ROSE



SILVER



STONE

WWW.LINIEDESIGN.COM

*Model* BERINO

*Quality* SHAG-PILE

*Surface composition* 100% POLYESTER

*Fringes* NO

*Sizes (cm)* 140/200, 160/230, 200/300



# BERINO

ROSE



GREY



PETROL



ROSE

WWW.LINIEDESIGN.COM

*Model* KISHO

*Quality* SHAG-PILE

*Surface composition* 100% POLYESTER

*Fringes* YES

*Sizes (cm)* 140/200, 170/240, 200/300



**KISHO**

GREY