

# SGABELLO ZEBRA POP

Design Luisa Battaglia



Scocca imbottita con anima in policarbonato.  
Struttura a 4 gambe in acciaio tubolare ø mm 16 cromato.  
Disponibile in due altezze.  
Per uso interno.

*Upholstered main body with polycarbonate core.  
4-leg frame in 16 mm diam. tubular chrome steel.  
Available in two heights.  
For indoor use.*

## TESSUTI E COLORI

FABRICS AND COLOURS

### CUOIO / LEATHER



CN 83  
bianco  
white



CN 84  
nero  
black

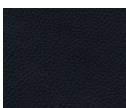


cuoio/leather  
CN 84

### SIMILPELLE / SIMIL-LEATHER

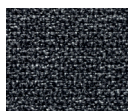


EP 74  
bianco  
white



EP 75  
nero  
black

### TESSUTO / FABRIC



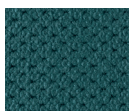
T3 25  
grigio classico  
classic grey



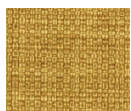
T4 52  
arancio  
orange



T4 55  
nero  
black



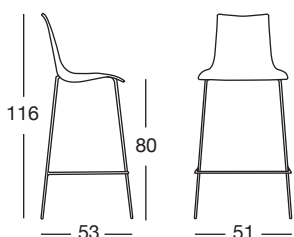
M2 09  
verde pavone  
peacock green



T5 27  
zafferano  
saffron

## CODICE MODELLO

MODEL REFERENCE NUMBER

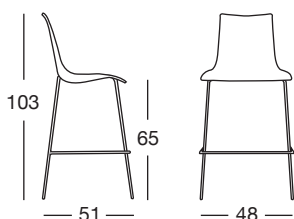


h.80  
Art. 2555

Imballo: 2 pezzi  
Packing: 2 pieces

Peso unitario Kg 8,100  
Unit weight

Misure imballo 56,5x53,5x84 cm  
Packing sizes



h.65  
Art. 2556

Imballo: 2 pezzi  
Packing: 2 pieces

Peso unitario Kg 7,700  
Unit weight

Misure imballo 55,5x52,5x69 cm  
Packing sizes

made in Italy

**SCAB**  **DESIGN**  
since 1957

Sede/Headquarters: 25030 Coccaglio (BS) Italy - Via G. Monauni, 12  
Divisione Commerciale Italia: Tel. 0307718.760/765/770 - Fax 0307718.777  
www.scabdesign.it - e-mail: italia@scab.it  
Export Department: Phone +390307718.720/725/726 - Fax +390307718.700  
www.scabitaly.com - e-mail: export@scabitaly.com